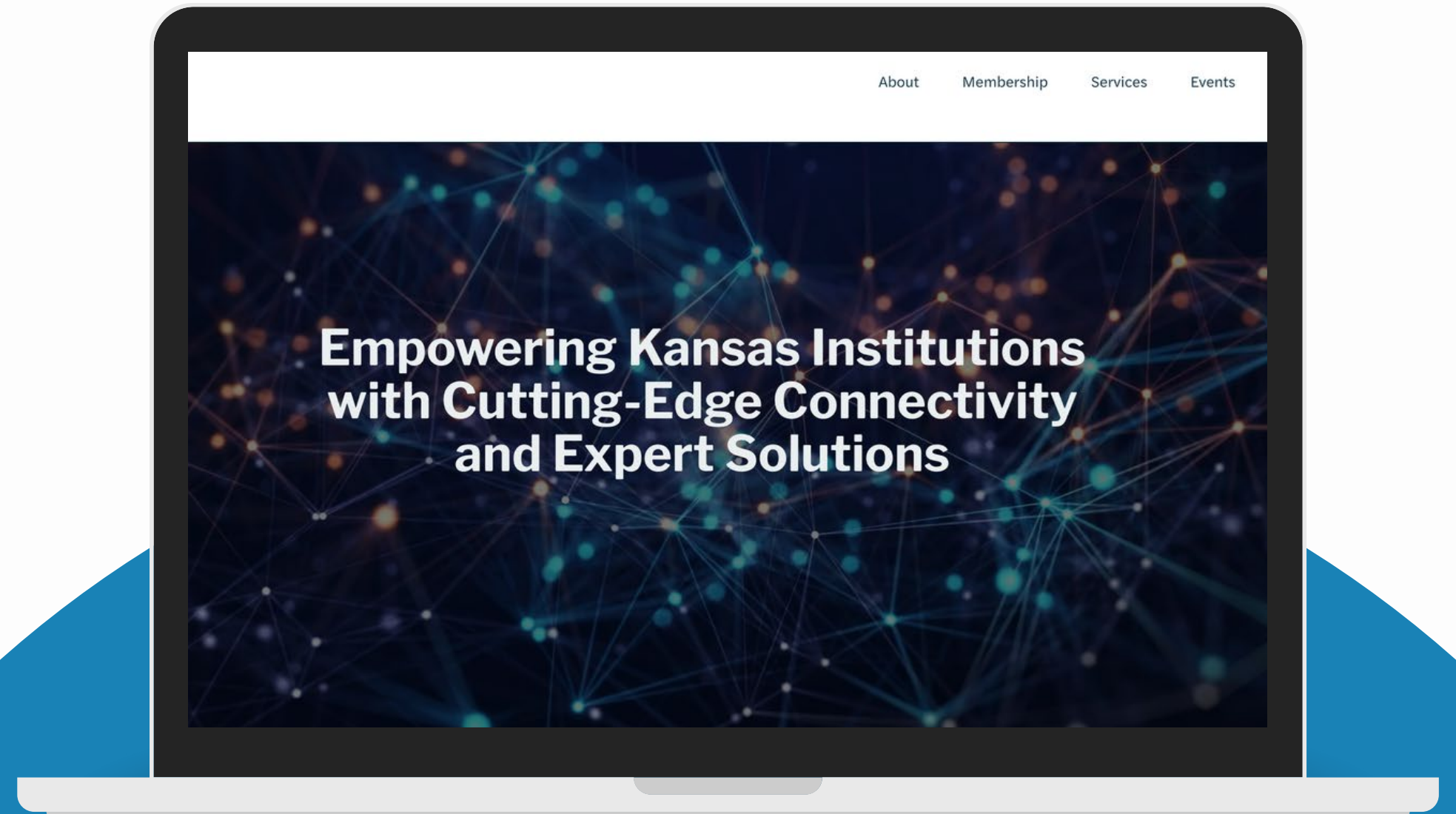




Introduction to KanREN

Christopher Crook



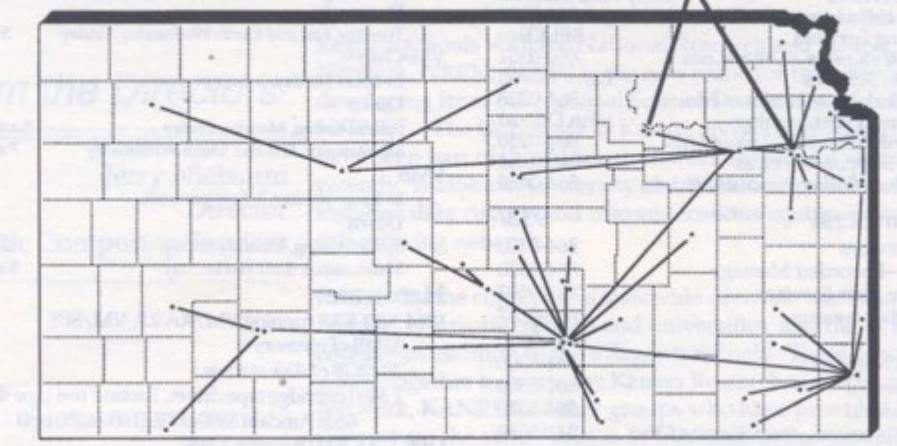
Overview

- ▶ Introduction
- ▶ About Us
- ▶ Our Services
- ▶ Key Priorities
- ▶ Statistics
- ▶ Our Team

Computing Services
The University of Kansas
Lawrence, Kansas

COMPUTING NEWS

KANREN covers Kansas



Kansas Research and Education Network, KANREN, is proposing a statewide electronic network that will connect Kansas community colleges, private colleges

and universities, and the regents schools. When funded, KANREN will provide these institutions with access to a wide variety of national and international resources.

Vol. 11, No. 1

February/March 1992

▶ About Me

Christopher Crook – KanREN / Executive Director – President

I am a veteran of technology leadership in finance, business, and operations. I am California native but moved to Kansas soon afterward and have been, for the most part, a lifelong Kansan.

After graduating from Derby High School and The University of Kansas, I soon started with HDR Engineering in Omaha and Washington DC. Finding my love of business, technology, and management he moved to Dallas in the middle of the dot com boom. There I worked for the telecom Citizens Communications, start-up ISP airBand, and cybersecurity giant McAfee.

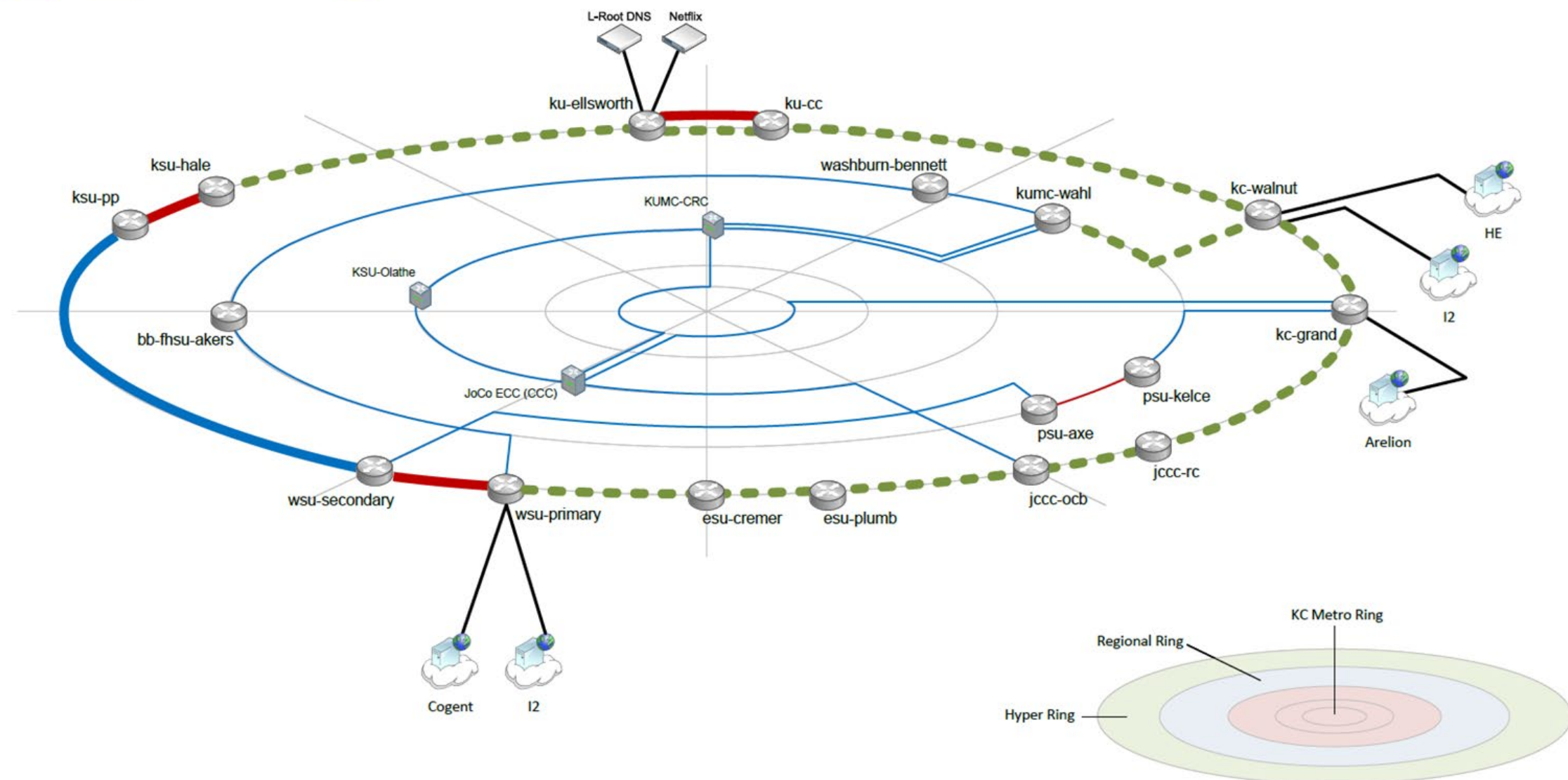
Longing to be back in Kansas, I moved to Lawrence to work for my alma mater, The University of Kansas. Over the next 18 years, I progressed into his previous IT Chief Operations Officer role. I bring over 20 years of technology management and leadership to his new role as the Executive Director of KanREN which started on July 2023.



KanREN in Simple Terms

KanREN is one of the 40 Research and Education Networks in the United States. Demand for the highest speed broadband connections, redundancy and reliability are all key to a REN's existence.

A very high-speed connection to a residential consumer would be at about 1G. KanREN currently has 100G capability and within the next year will have 400G with 800G available.





Introduction

KanREN is the gateway to high-speed network connectivity, collaboration, and expert support for Kansas anchor institutions. We provide exclusive access to research networks and communities, customized technology and security solutions, and personalized support to ensure your institution's success.

About us

KanREN is the Research and Education Network (R&E) in Kansas. Established in 1992, KanREN is a 501(c)(3) created by the public universities of Kansas. Created as a pioneer in R&E networks nationwide, KanREN shares resources, builds local, state and regional collaboration.

KanREN provides a single entity that works on behalf of all members, eliminating the duplicative skill sets, staffing, contracts, and individual services required to meet the needs of our members. Since 1992, KanREN has provided opportunities beyond physical network connectivity.

Our members are forward-thinking experts from education and community institutions. The relationships formed through our network empower members to achieve challenging goals, foster innovative thinking, and connect with similarly situated institutions. This collective expertise from passionate and highly respected professionals offers unique access and benefits to our members.





Services

Connect, Innovate, and Secure Your Institution with KanREN

KanREN operates at the forefront of technology services, specializing in network technology for research and higher education. We extend our capabilities to all community anchor institutions across Kansas.

We build the backbone that supports Kansas' education and research, fostering a culture of modernization. KanREN is not just a service provider; we are your partner in progress. Through our state-of-the-art network infrastructure and dedication to cybersecurity, we create an environment where collaboration thrives, academic discoveries are realized, and innovation flourishes.

Discover an ecosystem designed to amplify the capabilities of institutions within Kansas. Join us and unlock your full potential with the expansive range of services KanREN proudly provides.



Connectivity



Security



Information
Management



Optimization



Monitoring



Collaboration

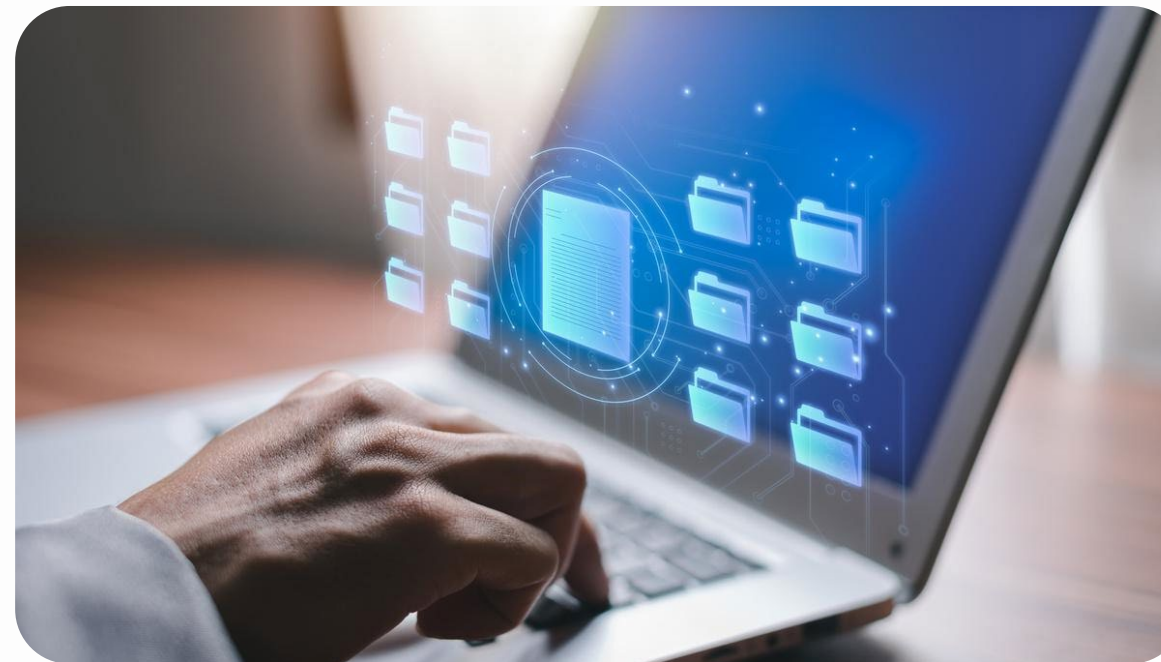


Services



Connectivity

- High Speed Internet Connectivity
- Internet 2 (I2)
- Internet 2 Cloud Connect
- Internet 2/GPN (I2 and I2PX)
- DDos Scrubbing



Information Management

- Web Hosting
- File Storage (StormCellar)
- Cloud Storage
- Disaster Recovery/Business Continuity Site
- System Services
- Storage Capacity Planning



Monitoring

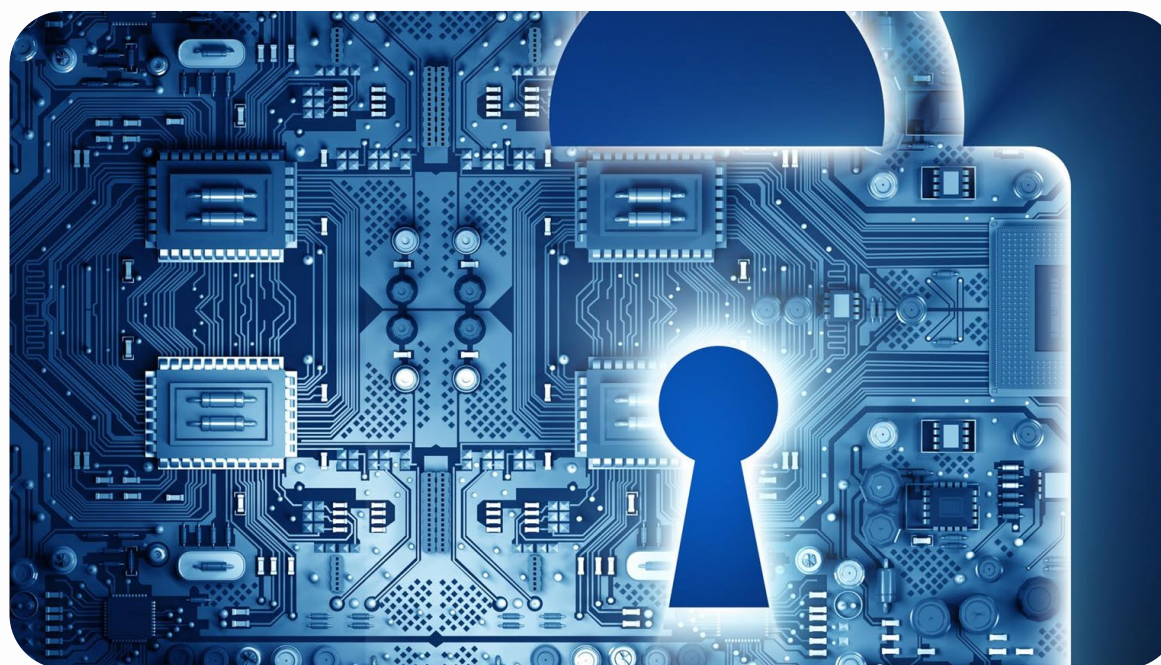
- Network Monitoring/Support
- Network Health/Utilization
- Traffic Analysis/Graphs
- Network Operations Center (NOC)
- Speed Test
- High Speed Internet Connectivity
- Flow Analysis



Optimization

- IP addresses
- Software Reseller
- Zoom
- Software and Hardware Sales/Discounts
- DNS
- CPE
- LAN/LAN Support
- Training and Education
- Audio Visual Technology
- Proxy Membership – GPN and I2
- Contract Vehicles/Buying Club
- Network Troubleshooting
- Engineering Analysis/Support
- VM construction
- IT Consulting/Resources
- Domains

KanREN Services



Security

- Infrastructure Management
- Security Services
- Firewalls
- DDoS Integration
- Vulnerability Scan
- Policy and Compliance Guidance



Collaboration

- Membership
- Zoom
- Training and Education
- Community
- Video QoS
- Voice QoS
- Internet 2 (I2)
- Great Plains Network (GPN)
- Energy Sciences Network (ESnet)
- Fiber Broadband Association
- Schools, Health & Libraries Broadband (SHLB)
Coalition USAC Funds
- Augmented Administrative Services

Notes / Key Topics

- ▶ Types of Membership and USF
- ▶ KanREN and the Freestate Middle Mile Network
- ▶ Connecting cutting edge industry / Vocational education paths.
- ▶ Partnering with State Offices
- ▶ Partnering with Kansas Telecom & Fiber and Technology Providers





Member Types

BACKBONE

Higher Ed Institutions that have a need for large amounts of data to securely and quickly move from one institution to another.

These are core members and are the reason KanREN is in existence.

AGGREGATED

K-12 schools, hospitals, libraries, municipalities.

These members utilize KanREN's network, services and consortial pricing.

They also leverage KanREN's technology expertise as fractional IT support.

NON-CONNECTED

Smaller community colleges, and organizations.

While not connected to the KanREN network, they utilize the consortial pricing on products like Zoom as well as the opportunity to connect with other technology professionals.

Universal Service Fund

Managed by the Federal Communications Commission, USF spends about \$8 billion annually subsidizing rural broadband networks, plus internet discounts for low-income households, health care centers, and schools and libraries. KanREN Participates in:

- E-Rate
- HCF

KanREN facilitates **over \$2.5 million** annually in USAC funding for its members.

Revenue Growth

20%

Customer
Acquisition Cost

Return on
Investment

75%

Customer
Satisfaction



FREESTATE MIDDLE MILE NETWORK



KANSAS OFFICE OF BROADBAND DEVELOPMENT

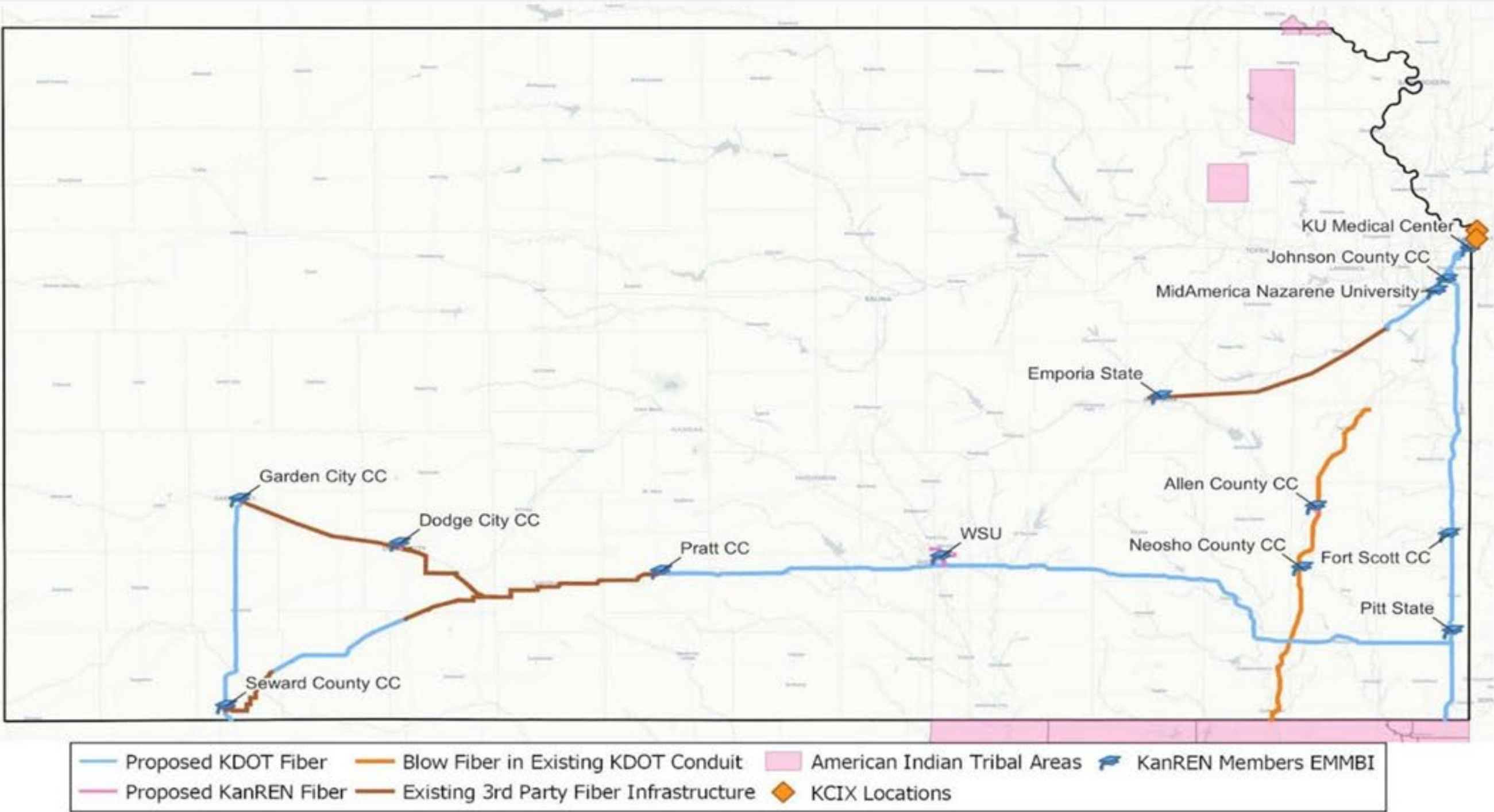
MIDDLE-MILE PARTNERSHIP

KDOT, KANREN, anchor institutions and Kansas communities will benefit from a middle-mile project.

DESIGNATED ROUTES

New Infrastructure

- **US-83: Liberal to Garden City** - 70 Miles
- **Pratt - Wichita** - 79 miles
- **Kismet - Minneola** - 43 miles
- **US-400/US-54: K-96 & US-54 junction to US-69 junction** - 158 miles
- **US-69: Stateline to Kansas City location** - 157 miles
- **Wellsville - KC IPX** - 41 miles
- **US-169: US-166 to Greeley Regeneration Building** - 106 miles



Interesting Fact

More than half of KanREN traffic doesn't leave the network

Examples of Research that KanREN Supports:

- WSU National Institute for Aviation Research (NIAR)
- National Center for Aviation Training (NCAT)
- KSU Salina Aerospace and Technology Campus

Education in workforce training for Kansans:

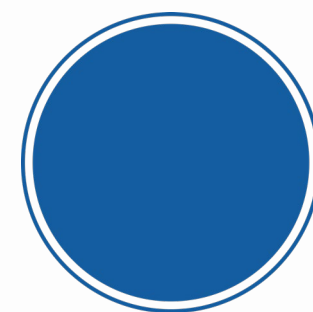
- KLETC – Kansas Law Enforcement Training Center in Yoder
- Barton – Welding, EMT and Agricultural Industry Education
- Scott City – Harley Davidson School
- Pittsburg State: Automotive Technology & Caterpillar Tech Certifications





Key Partnerships

We can't do it alone and we value our state and corporate partners to provide guidance, services and support to our mission



State Partners:



Kansas Office of Broadband Development



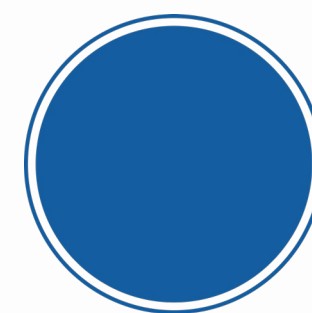
Kansas Department of Transportation



Office of Procurement and Contracts



Kansas Board of Regents



Corporate partners:



LUMEN®



zoom

ciena

INVARY



Our Team



Chris Crook
Executive Director/President



Erica McDiffett
Chief Operations Officer



Brad Fleming
Chief Technology Officer



Jeff Sorrels
Director of Technology



Jamie Jeffers
Business Operations Manager

THANK YOU!




Chris Crook

Executive Director/President

 785-856-9802

 www.kanren.org

 2029 Becker Dr., Suite 282,
Lawrence, KS 66047

