

Brad Marcuson  
Stanley A. McEvoy  
Karen Larson  
*Commissioners*  
785-475-8101

Nora Urban  
*County Clerk*  
785-475-8102

Jean Ann Hale  
*County Treasurer*  
785-475-8103

Steven W. Hirsch  
*County Attorney*  
785-475-8104

Kari Ketterl  
*Register of Deeds*  
785-475-8105

Troy M. Haas  
*County Sheriff*  
785-475-8100

*EM Director*  
785-475-8100  
785-475-8102

Jay Tate  
*Magistrate Judge*  
785-475-8108

Rhonda Wildeman  
*Clerk Of The District Court*  
785-475-8107

Ernie Sheets  
*Road Supervisor*  
785-475-8111

Gaylen Huntley  
*County Weed Director*  
785-475-8128

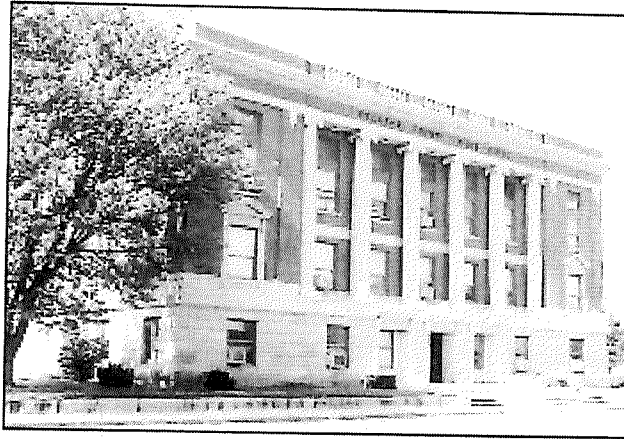
Alan W. Hale  
*County Appraiser*  
785-475-8109

Bobbi Koerperich  
*Health Administrator*  
785-475-8118

Chris Koerperich  
*EMS Director*  
785-475-8126

Marilyn Mack  
*Chief Dispatcher*  
785-475-8110

Bill Cathcart  
*Fire Chief*  
785-475-8100



# County Of Decatur

P.O. Box \_\_\_\_\_

Oberlin, Kansas 67749-\_\_\_\_\_

Feb. 12, 2021

CDL for motor grader operators:

I firmly believe that the existing regulation in place needs to be amended. The CDL written and driving test is structured toward semi-trucks as well as it should be, but it has absolutely nothing to do with heavy equipment. There are several pieces of equipment that exceed the 26,001 lb. rule. Farm tractors, scrapers, front end loaders, etc.

All of our motor grader operators go through a training period by experienced operators prior to being allowed to operate in traffic areas.

It would also open up more potential employee prospects. I know firsthand that people have looked in other directions for employment based on the fact that our advertisement states that we require a CDL license. It's a win situation for everyone if this new exception is accepted.

Ernie Sheets

Road and Bridge Supervisor

Senate Transportation Committee

Date: 3-24-21

Attachment:

Decatur County is an equal opportunity provider, and ei

5