



**American
Concrete**
Company, Inc.

Current Leadership
Jane Noble Crain, Chairwoman
Justin N. Crain, President / CEO

Past Leadership
William F. Noble, Chairman 1971-1989
M. Dennis Crain, President / CEO 1974-2020

WRITTEN TESTIMONY

DATE: March 19, 2021
BY: Justin N. Crain, President / CEO
American Concrete Co., Inc., Pittsburg, Kansas
REGARDING: House Bill 2167
BEFORE: The Senate Transportation Committee

Chairman Peterson and Committee Members,

Thank you for the opportunity to testify in support of HB 2167 and share a perspective from the front lines of the ready-mix concrete industry.

My name is Justin Crain and I serve as the President and CEO of American Concrete Co., Inc. based in Pittsburg, Kansas. We are a family owned supplier of ready-mix concrete serving the Pittsburg and Southeast Kansas market. I the third generation of my family that have owned and operated American Concrete over the past forty-nine years.

I'd venture a guess that some of the committee has been involved with some construction or home improvement activities that required a ready-mix truck deliver concrete for the purpose. I suspect everyone else has been a casual observer watching a ready-mix truck discharge concrete for those sort of construction activities. Either way, I think everyone would agree there is a lot of stuff going on at the back end of a concrete mixer truck whether its discharge chutes banging and swinging or concrete flowing and splattering. As you might imagine that sort of environment is not real conducive to keeping a license plate affixed and undamaged.

For American Concrete and our fleet of ten mixer trucks, it has been a relatively common occurrence for us to replace a tag due to damage or loss. When this happens, not only is there the expense of the replacement tag but it also requires an employee to go to Girard to physically order a new tag, then wait for the tag to be mailed which incurs additional expense for us. While those expenses in any given year probably aren't huge, those dollars are better served staying in American Concrete, so we have the best opportunity to continue our long legacy of serving the region's concrete needs and providing the jobs to do so.

I've included some pictures with my testimony. The pictures show a typical American Concrete mixer truck and provide a visual perspective of the things that can potentially impact a license plate affixed on the rear.

I appreciate your consideration for passing HB 2167 and would stand for any questions.

Respectfully,

Justin N. Crain, President / CEO
American Concrete Co., Inc.

www.americanconcretetco.net

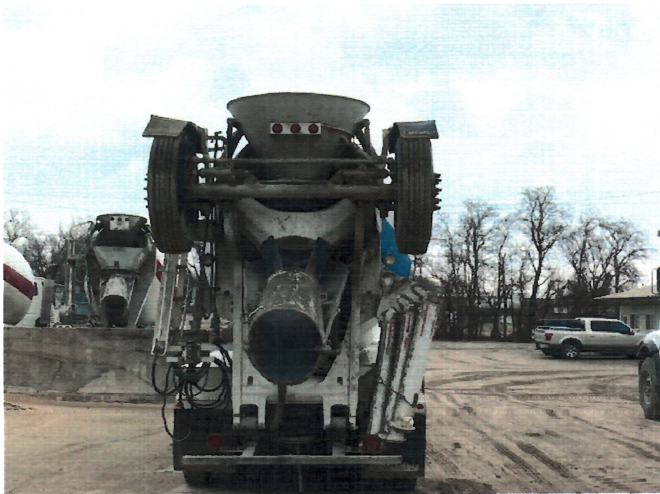


American Concrete

Company, Inc.

Current Leadership
Jane Noble Crain, Chairwoman
Justin N. Crain, President / CEO

Past Leadership
William F. Noble, Chairman 1971-1989
M. Dennis Crain, President / CEO 1974-2020



www.americanconcreteco.net

504 N. Smelter | Pittsburg, KS 66762 | P: 620.231.1520 | F: 620.231.0878