



**Kansas Highway Patrol
Five-Year Capital Improvement Plan – FY’s 2023 - 2028
Joint Committee on State Building Construction
September 8, 2022**

Mr. Chairman and members of the Committee, my name is Sherry Macke, the Chief Fiscal Officer for the Highway Patrol. I want to thank you for the opportunity to present the Kansas Highway Patrol’s five-year Capital Improvement Plan. Before you are copies of the Agency’s five-year plan and available images of the various projects as part of this written testimony.

The Agency’s five-year plan is organized into six categories: Training Academy major projects, Training Academy maintenance/repair, troop facility major projects, troop facility maintenance/repair, scale house/scale repair/replacement, and new construction.

FY2023 Capital Improvement Overview

The 2022 Legislature approved capital improvement expenditures in the amount of \$1.12M. However due to a major wind event in December of 2021, which caused extensive damage to the roof of the Training Center in Salina, and a request from Troop I to begin a replacement strategy for the scale houses located throughout the State, the Agency’s capital improvement plan for FY2023 has increased to \$2.84M, with funding earmarked through special revenue funds.

KHP Training Academy (KHPTA) – Major /Maintenance & Repair

Due to the age and size of the complex, the KHPTA contributes to a large portion of the Agency’s planned expenditures. Expenses for major projects identified in FY2023 are estimated at approximately \$998K. Plans include the replacement of the Training Academy roof over the auditorium and repairs to the interior of the building caused by the December 15th wind event in 2021 (\$597K). KHP is working with FEMA to secure federal disaster assistance, however immediate repairs were needed prevent further damage.

Two additional projects planned for FY2023 include the upgrade and modernization of the elevator at the Training Academy as the current elevators are being phased out by the manufacturer and need a retrofit, and completion of the third and final phase of the flooring replacement project in the Administration building (\$401K).

Routine maintenance/repair projects for FY2023 account for \$103K of the plan and include the addition of wireless access in both the Administration building and dorm, as well as the installation of flooring in the cafeteria kitchen.

KHP Troop Facilities – Major /Maintenance & Repair

The primary focus for all other Troop projects in FY2023 is the repair of the Troop C elevator located at the Salina campus. The elevator failed to meet the 2,000lb load testing requirements. The budgetary estimate for this project is \$565K to replace the cables and motor drive controller for the new rated capacity. Additional maintenance and repair projects include an upgrade of the Fleet front gate and the addition of exterior and interior cameras at the Troop A headquarters located in Olathe. Total allocation for routine maintenance and repair for these facilities is \$46K.

Scale House and Scale Repair/Replacement & Modernization –

The Agency's 'State Weight Enforcement Plan' with the Federal Highway Administration requires scales to remain operational and meet agreed upon metrics for inspections. Due to the 24/365 operations of this equipment, the scales must constantly be certified and eventually replaced due to end of life or equipment failure. The Kansas Department of Transportation (KDOT) in partnership with the Kansas Highway Patrol (KHP) initiated a review and inventory of existing truck inspection station facilities throughout the state of Kansas in 2008. Via Project No. 106 KA-1293-01, WSP USA, formerly Parsons Brinckerhoff, an engineering and design firm, handed down a recommendation to replace, relocate, or construct new, two fully staffed inspections stations per year over the following eight years. However, due to the availability of funding, the recommendation was never implemented.

Recently these recommendations have been revisited as the current locations are drastically deteriorating and in need of replacement. The Agency believes funding can now be secured due to a recent change in federal funding and requirements for a state match. Estimates are based on activity similar in nature by neighboring states. Funds in the FY2023 CIP are earmarked as follows: \$220K for scale equipment replacement, \$880,000 for full scale house replacement at the N. Olathe location (includes the structure,

scales, and associated infrastructure). Routine maintenance is estimated at \$36K for a total expenditure of just over \$1.13M.

New Construction –

Troop E Storage Building in Garden City - This project has been deferred over several fiscal years beginning with FY2019. Originally, lack of resources and the pandemic contributed to the delay. In late FY2021, the project was bid through the Office of Facilities and Property Management with the proposals coming in \$150k over budgetary estimates. Considering current construction costs, this project remains on hold and the request withdrawn from the agency’s current CIP with plans to be re-evaluated once construction costs stabilize.

FY2024-2028 Capital Improvement Project Overview

The Agency’s is requesting approval of its capital improvement plan for the remaining FY2024-FY2028 in the amount of \$10.09M. The following projects and estimates are contingent upon the Agency having sufficient resources in the targeted special revenue funds.

KHP Training Academy (KHPTA) –

Major projects and routine maintenance total \$2.2M and include replacement of the concrete cap over the lower power plant, replacement of the concrete stairs, dorm & gym window replacement, updating dorm lighting, updating the security system, HVAC, electrical & plumbing modernization in the gym, installing ground level entry, and replacement of the flooring in the dorm.

KHP Troop Facilities –

Total allocation for both major projects and routine maintenance and repair for KHP owned Troop locations is estimated at \$1.4M.

Major improvements for KHP owned facilities include updating Troop C lighting and windows, replacement of Troop C flooring, update Fleet HVAC, and painting of the exterior of the Fleet building in Topeka.

Scale House and Scale Repair/Replacement & Modernization –

The scale replacement initiative spans the life of the 5-year plan with an allocation of funding in each of the remaining fiscal years. The total estimated expenditure for the replacement and annual repair/maintenance is \$4.7M.

New Construction –

Storage building at Troop A headquarters in Olathe – Similar to the Troop E storage building, current construction costs have caused the agency to put this project on hold. However, additional needs have been identified within the Agency’s dispatch center located at the Salina campus. Discussions are in the early stages, however, estimate the expenditure could be as much as \$1.6M.

Thank you for your time and consideration. I will stand for any questions the Committee may have.

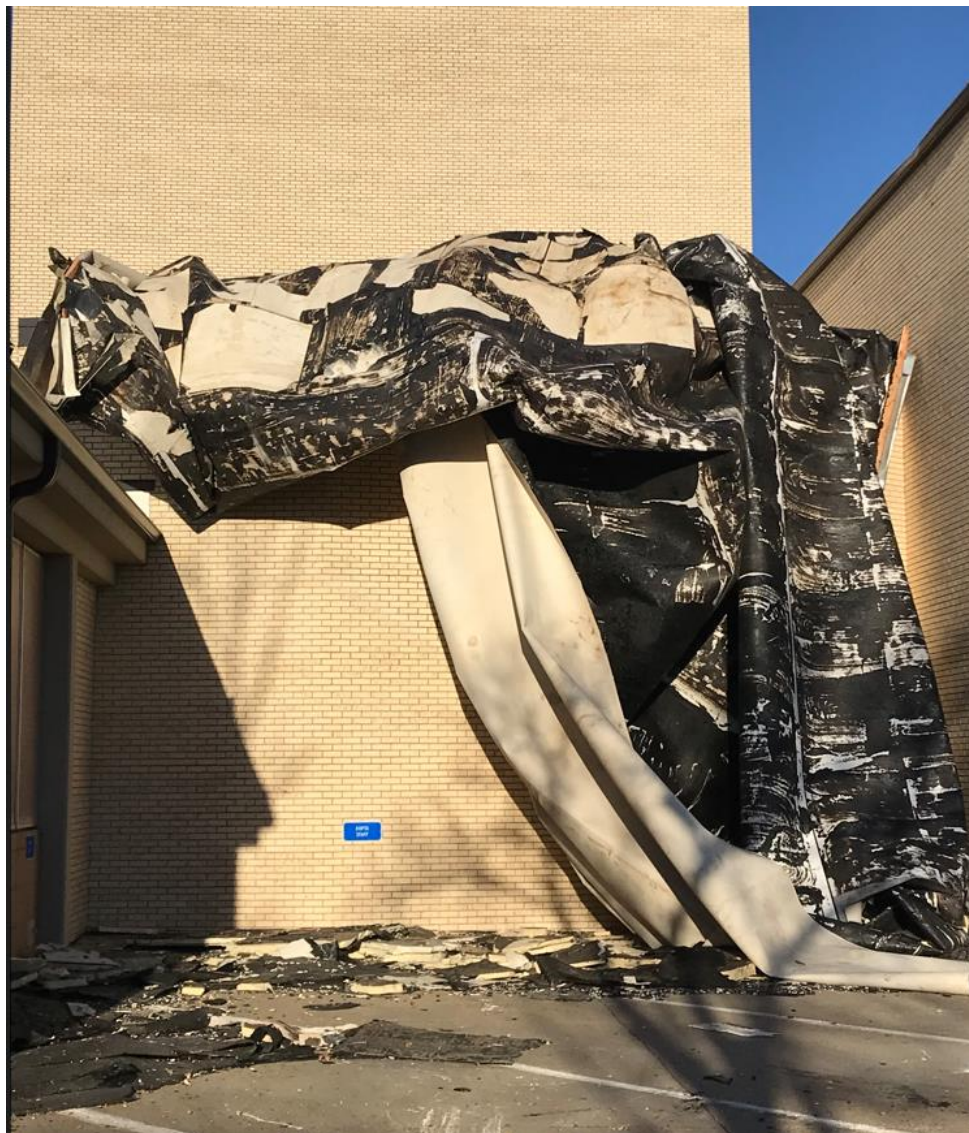
APPENDIX

Appendix A

KHP 5-Year Capital Improvement Plan

Project Images

Training Academy – Auditorium Roof Replacement





Training Academy - Admin Bldg. Floor Replacement (Final Phase)



Training Academy – Concrete Cap Replacement



The concrete over the underground tunnel is starting to deteriorate and debris is falling inside.

Training Academy – Stair Replacement



Training Academy - Window Replacement



Training Academy - Lighting Replacement



Training Academy – Installation of Ground Level Entry



Troop I – Scale House Replacement/Modernization Olathe – North Bound









Olathe – South Bound



Fleet – Painting Project

