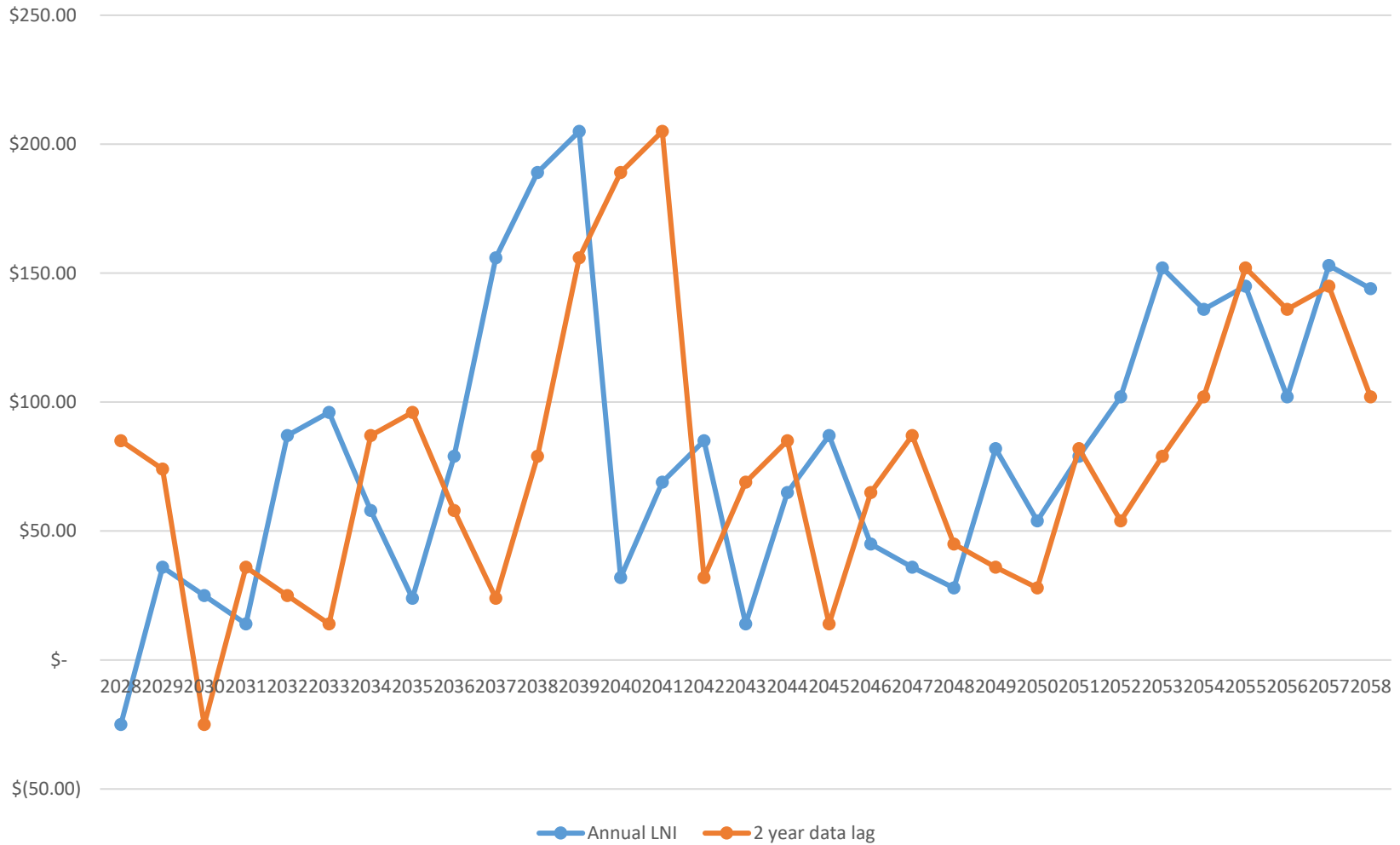


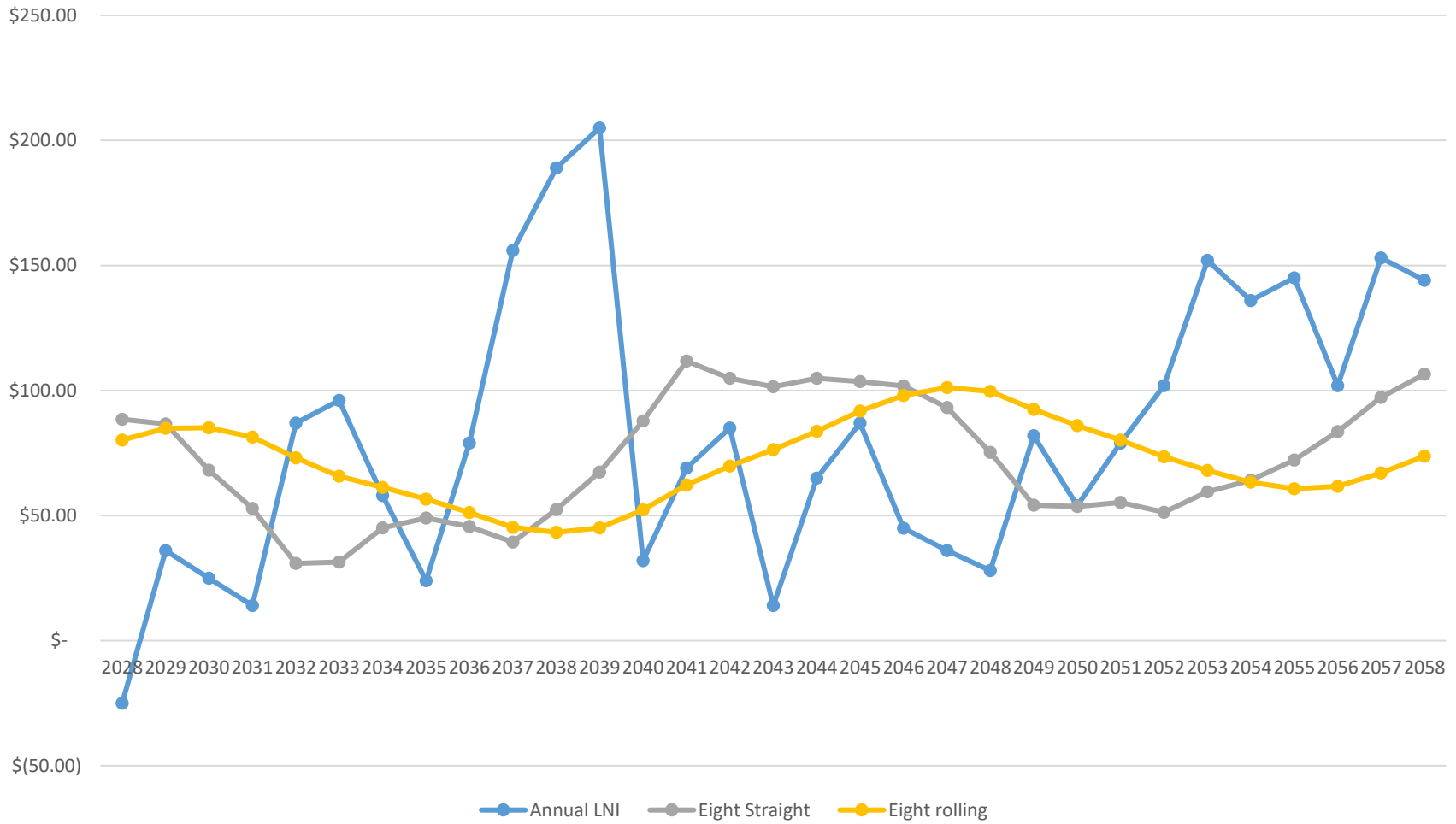
Comparison with the current eight year moving average (purple) process for landlord returns with an eight-year average (green) process

Source: <https://agmanager.info/land-leasing/land-buying-valuing/agricultural-landlord-net-income-under-alternative-tax-computation>

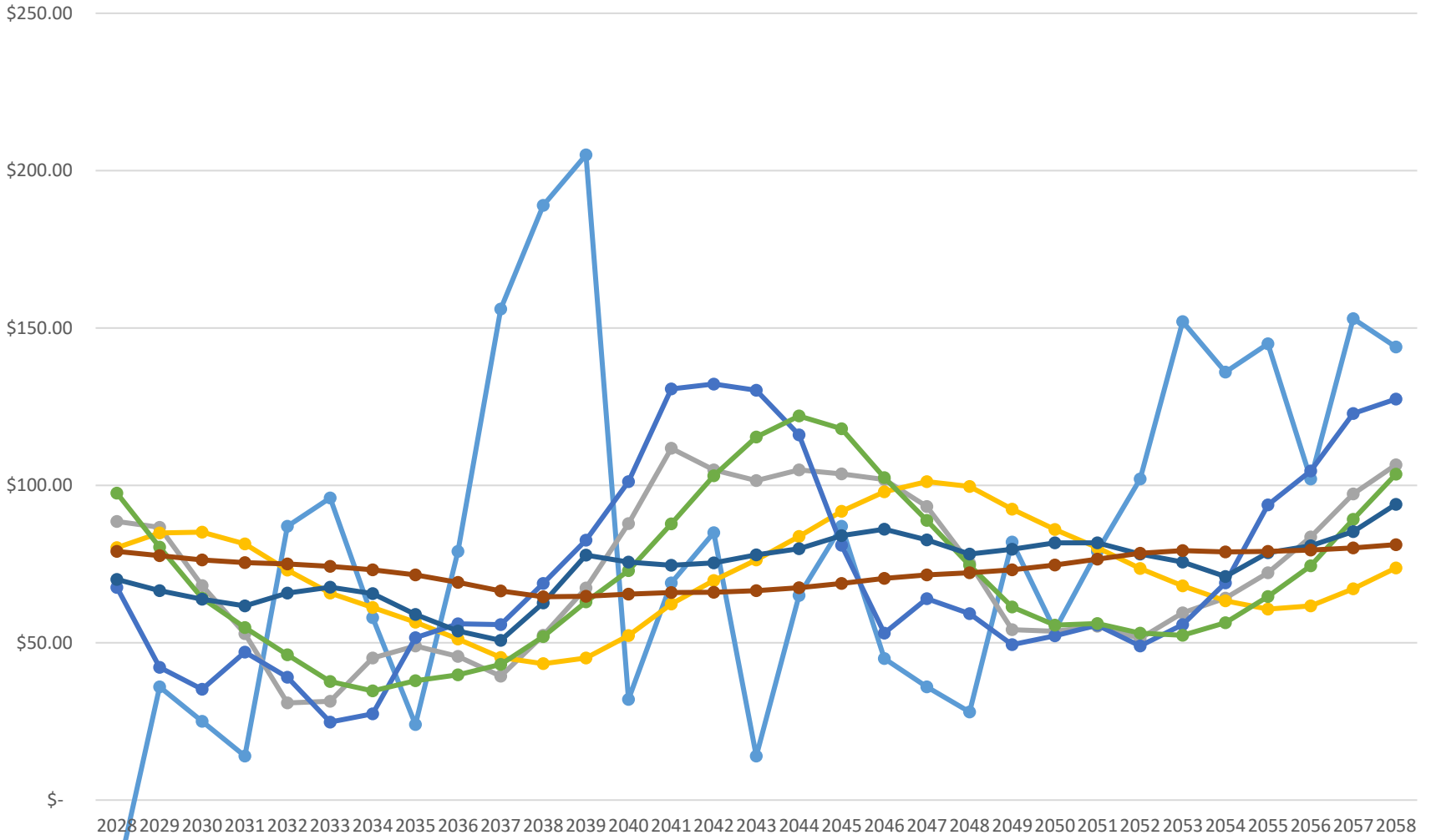
2 Year lag in annual data



Eight straight v. 8 rolling



Multiple LNI Options



● Annual LNI
 ● Eight Straight
 ● Eight rolling
 ● Five Straight
 ● Five Rolling
 ● 15 year straight
 ● 15 year rolling