



Kansas Bureau of Investigation

Crime Trends & Threats to Public Safety

A Briefing to the Joint Committee on Kansas Security

December 12, 2018

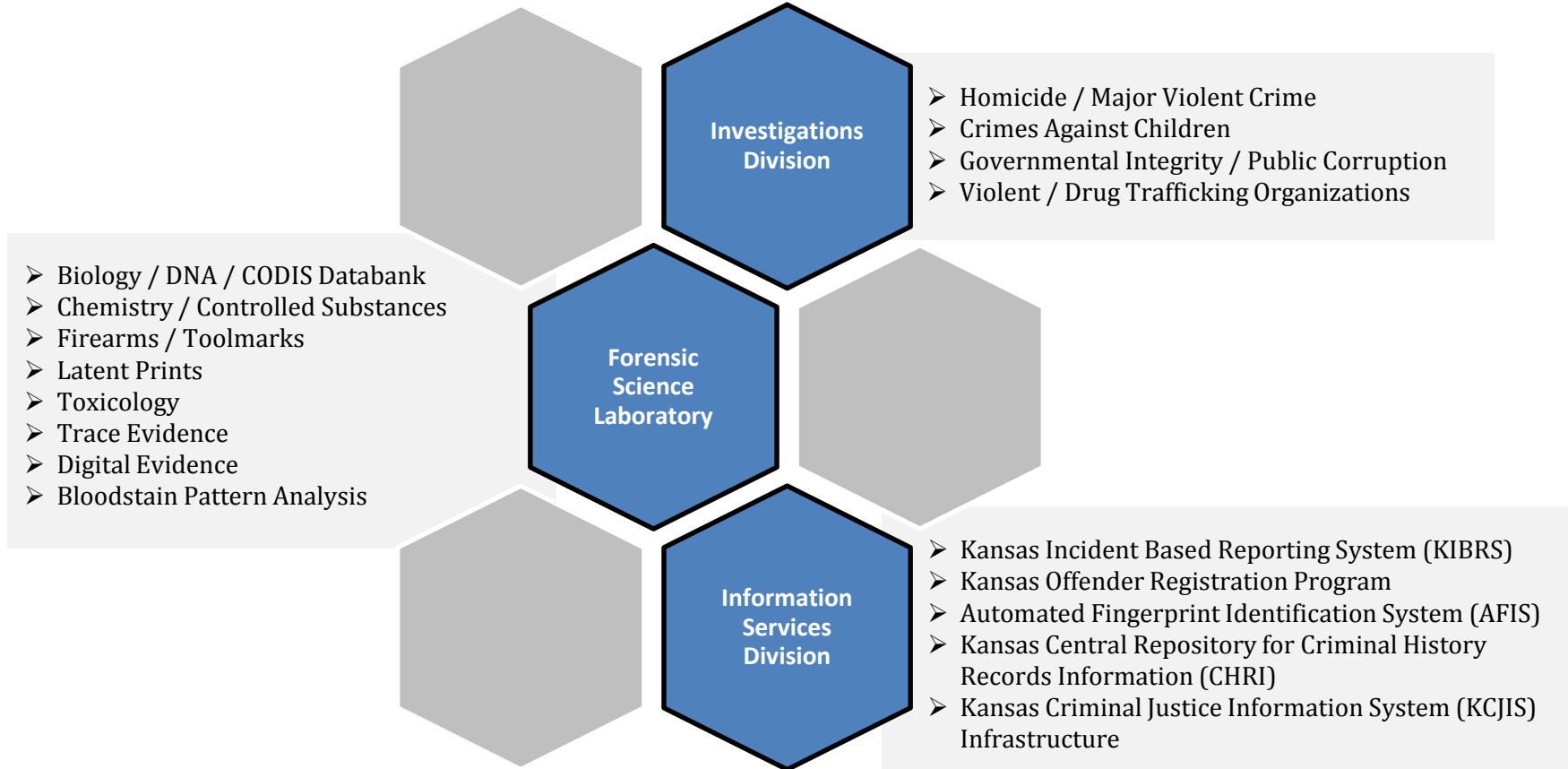
Executive Officer Katie Whisman

Kansas Bureau of Investigation



Our Mission:

To provide professional **investigative, laboratory and criminal justice information** services to Kansas criminal justice agencies for the purpose of **promoting public safety and preventing crime.**





CRIME TRENDS

Nationally...

Property Crime *decreased* by 3.0%

Violent Crime *decreased* by 0.2%

In KANSAS...

Property Crime *increased* by **2.3%**

Violent Crime *increased* by **6.3%**



Kansas Crime Trends

3-year Part I Crime Comparison

		Part I Crimes	2014	2017	% change
VIOLENT CRIME	Murder		101	176	74.3
	Rape		1,012	1,214	20.0
	Robbery		1,341	1,747	30.3
	Agg. Assault/Battery		7,075	8,605	21.6
	Total Violent Offenses		9,529	11,742	23.2
	Violent Crime Rate/1,000		3.2	4.0	25.0
PROPERTY CRIME	Burglary		15,593	13,392	-14.1
	Theft		54,657	59,725	9.3
	Motor Vehicle Theft		6,544	8,232	25.8
	Total Property Offenses		76,789	81,349	5.9
	Property Crime Rate/1,000		25.8	27.5	6.6
	Arson		637	599	-6.0

Data from *Kansas Crime Index*, published by KBI Incident Based Reporting Unit



**PERSISTENT & EMERGING
THREATS to PUBLIC SAFETY**

Major Violent Crimes



In Kansas, from 2014 to 2017....

Murder has increased by **74.3%**

- 176 Murders in 2017... highest since 2000
 - 21.1% involved multiple murders in a single incident
 - 22.3% were considered Domestic Violence homicides
 - 68.8% involved Firearms

Rape has increased by **20.0%**

Robbery has increased by **30.3%**

- In 2017, Firearms were used in 57.0% of Robberies* whereas the national average was 40.6%.

Aggravated Assault/Battery has increased by **21.6%**

- In 2017, Firearms were used in 45.8% of Aggravated Assaults* whereas the national average was 26.3%.

**KIBRS data does not include information from the following agencies which report Summary Data :
Topeka, Olathe, Overland Park, Mission, Roeland Park, Kansas City, Lawrence, Douglas County*

Crimes Against Children



.....Complex Investigations

.....Unique Challenges

.....Aggressively Defended



www.childabusepreventionkit.org

KBI's Child Victims Unit

Northeast Kansas Child Victims Task Force

FY 2021 Child Protection Initiative

Financial Crime



- Financial crimes and various forms of fraud can generate massive losses to individual and corporate victims.
- The KBI stopped accepting Financial and White Collar Crimes in FY 2012.
 - Now only accept cases involving public officials
- Internet based financial crimes in Kansas increased from \$3.9 to \$7 million between 2015 and 2016 and remained over \$5 million in 2017.
- Between 2015 and 2017, Kansas offense data reflected an increase from \$83.3 million to over \$102.6 million in reported loss!

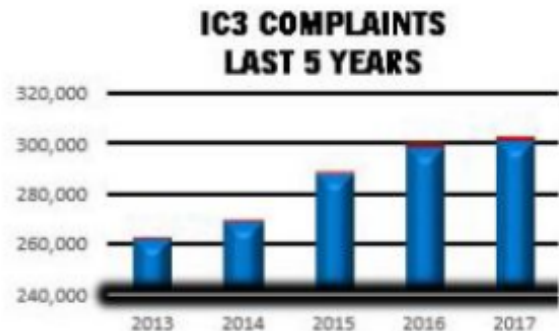
Federal thresholds increased
Little capacity at local level
+ **VOID at STATE level**

**KIBRS theft loss, not including information from the following Summary Data agencies:
Topeka, Olathe, Overland Park, Mission, Roeland Park, Kansas City*

Cyber Crime



Important Stats



**# Of Complaints
Reported Since
Inception ('00)
4,063,933**

Approximately 284,000
Average Complaints
Received Each Year

\$1.42 Billion
Victim Losses in 2017

Over 800
Average Complaints
Received Per Day

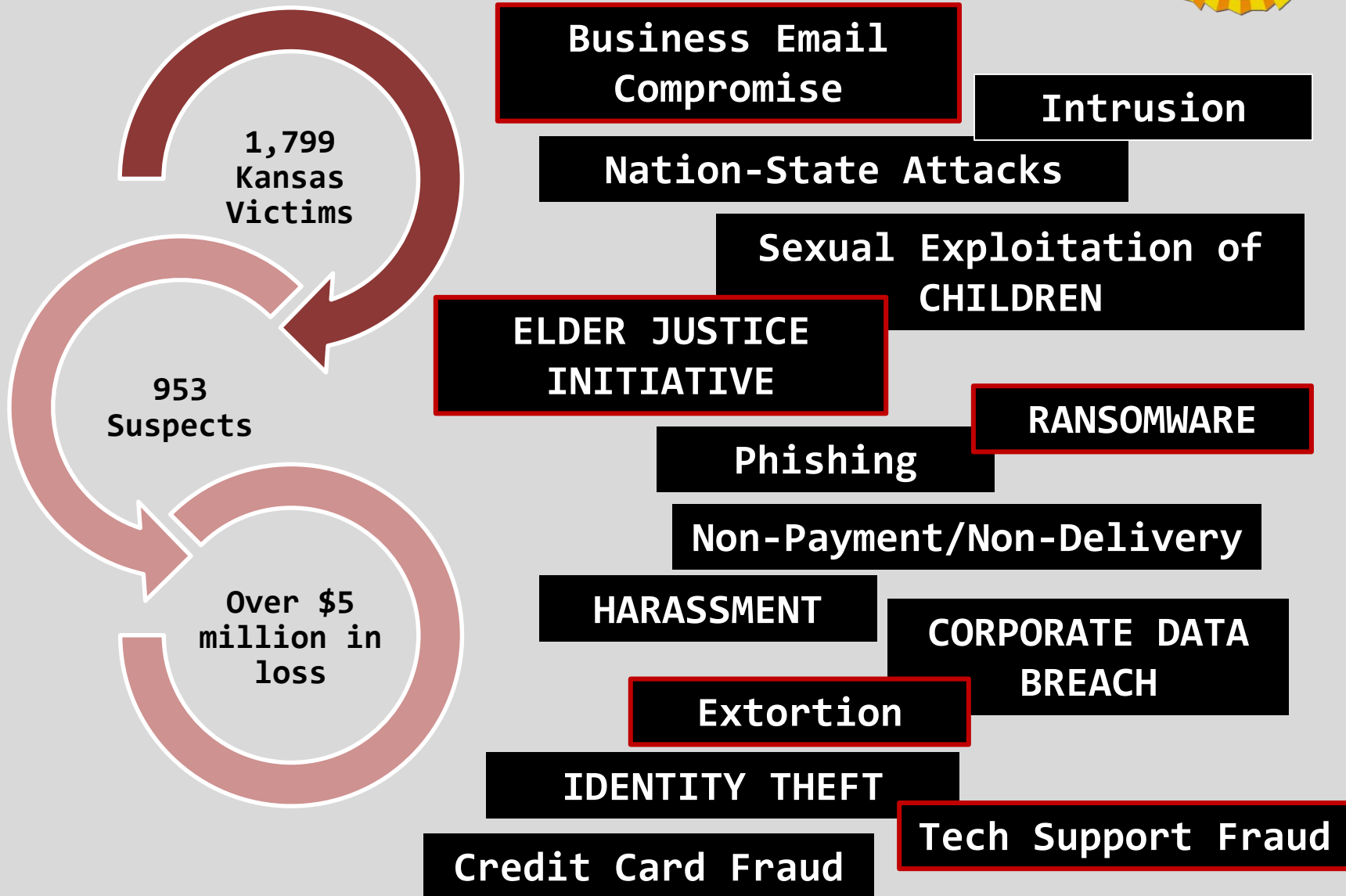
**Those over the
age of 60 are the
most victimized
population and
suffer the greatest
financial loss.**

Internet Crime Complaint Center (IC3)
2017 Internet Crime Report
www.fbi.gov

Kansas Ranks:

29th in Number of Subjects
34th in Number of Victims
34th in Financial Loss

IC3's 2017 Internet Crime Report



Investigation of Cybercrime and Enforcement of Laws



- KBI would lead response to incidents with criminal nexus
- 5 Lanes of Digital Law Enforcement
 1. Digital Forensics
 2. Cyber Investigation
 3. Proliferation of Child Pornography / Online Exploitation of Children
 4. Cyber Intelligence Gathering
 5. Technical Support of Investigations

Each lane requires specific skill-sets and associated training



Best Practices*

- Establish Strong Governance
- Define Ecosystem and Responsibilities
- Develop collaborative public and private relationships
- Generate interlocking response strategy to cyber events

**OFFENSE
IS THE BEST
DEFENSE**

**As presented at 2015 National Governor's Association,
Summit on State Cybersecurity*



EXAMPLE: State of Michigan

- Define Cyber Ecosystem
 - ✓ Describes Responsibilities
 - ✓ Provides Framework
 - ✓ Establishes Formal Relationships
 - ✓ Institutes Architects for Cyber Initiative Planning



Michigan State Police

Investigate & Enforce

Provide leadership for statewide law enforcement efforts on cyber crime.
Lead response to incidents with criminal nexus.
Serve as a liaison with federal law enforcement agencies.



Department of Technology, Management & Budget

State Infrastructure

Coordinate state protection, prevention, response, and recovery from cyber incidents.
Monitor and protect the State of Michigan IT infrastructure.



Michigan National Guard

Defense

Support the prevention, protection, mitigation, and response to cyber incidents.
Global threat intelligence. Train and equip Michigan's cyber defense forces.



Michigan Cyber Range

Education & Training

Basic certification.
Individual advanced skills.
Exercises and collective training.
Develop and support Michigan Cyber Civilian Corps.



Michigan Economic Development Corporation

Economic Development

Develop, attract & retain cybersecurity talent.
Connect Michigan companies with cybersecurity business opportunities.
Attract cybersecurity companies to Michigan.



Michigan Public Service Commission

Critical Infrastructure

Support the protection of energy control systems.
Strengthen public/private collaboration to protect critical infrastructure.

Drug Trafficking



1st..... Methamphetamine

- Greatest drug threat in region
- +98% Increase in KBI Lab Exhibits since 2012
 - Over 5,500 in 2017

2nd..... Heroin

- Linked to both violent and property crime
- High likelihood of related overdose
- 615% Increase in KBI Lab Exhibits since 2012

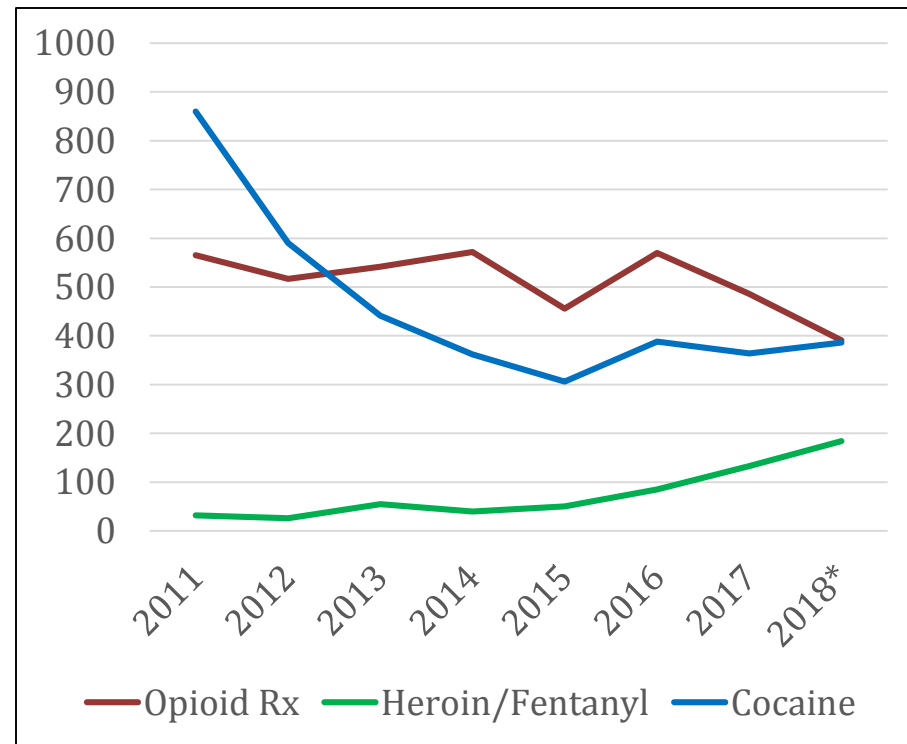
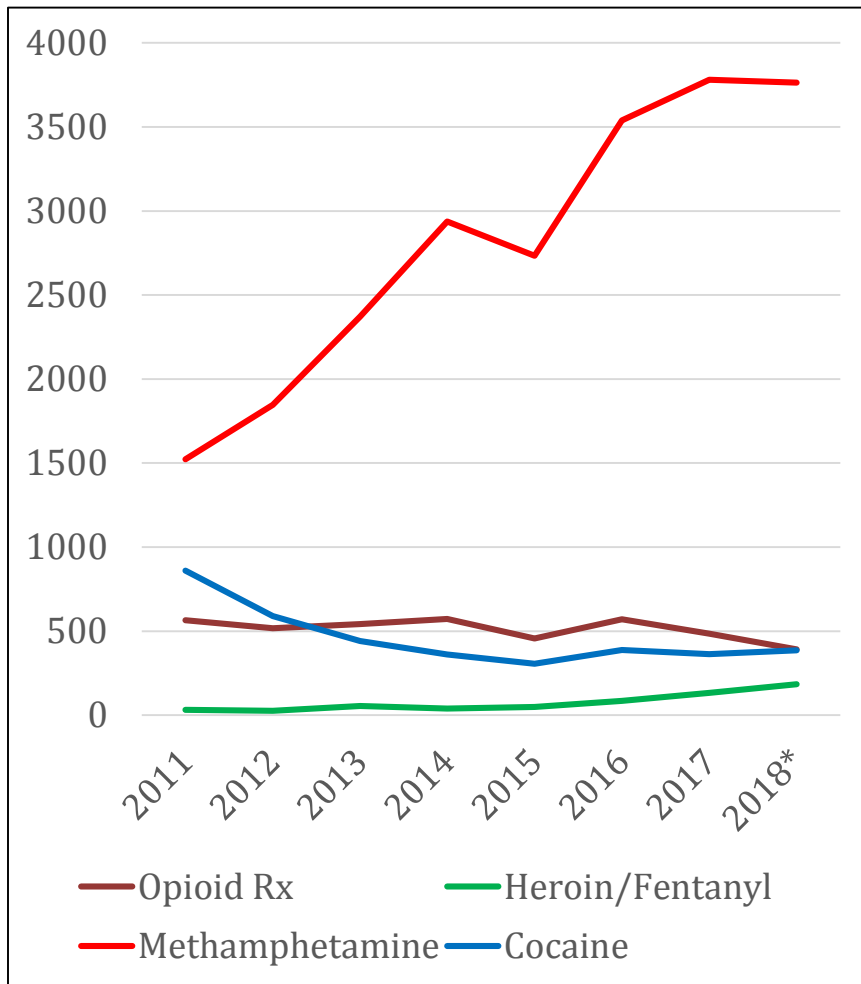
3rd..... Fentanyl

- Poses significant threat of overdose
- 250% Increase in KBI Lab Exhibits since 2012; 512% increase since 2015

4th..... Marijuana

- Domestically produced with higher THC content than Mexican-sourced
- Seizures up by 51% since 2017; reported concentrations greater than 80%
- Increased nexus between marijuana and both violent and property crime

KBI Forensic Laboratory Reports with Certain Controlled Substances



*2018 data from January - October

KBI Forensic Laboratory: Drug Exhibits



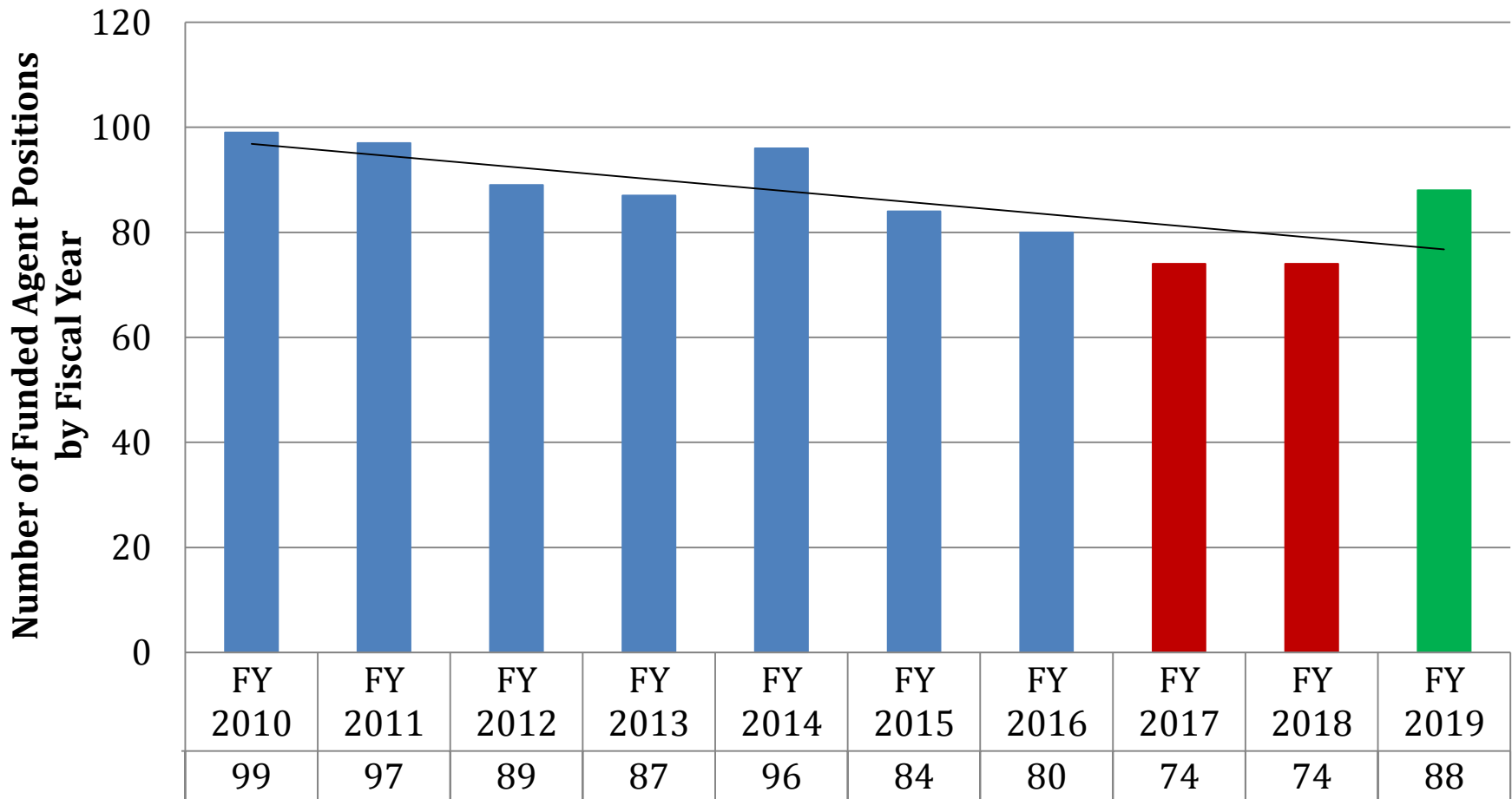
		2012	2013	2014	2015	2016	2017	2012-2017 % Change	2015-2017 % Change
Stimulants	Marijuana/THC	6451	6849	7045	6310	7720	7401	14.7	17.3
	Methamphetamine	2795	3704	4371	4085	5155	5546	98.4	35.8
	Cocaine	763	555	465	369	486	458	-40.0	24.1
	MDMA	18	24	22	20	25	26	44.4	30.0
	TOTAL	10027	11132	11903	10784	13386	13431	33.9	24.5
OPIOIDS	Hydrocodone	233	281	317	225	249	208	-10.7	-7.6
	Oxycodone	234	206	210	177	260	241	3.0	36.2
	Heroin	20	61	36	49	85	143	615.0	191.8
	Morphine	77	81	80	60	63	73	-5.2	21.7
	Codeine	18	25	24	18	31	17	-5.6	-5.6
	Hydromorphone	34	35	62	38	37	33	-2.9	-13.2
	Oxymorphone	26	15	10	7	13	5	-80.8	-28.6
	Fentanyl	14	9	10	8	13	49	250.0	512.5
TOTAL	656	713	749	582	751	769	17.2	32.1	

Kansas Incident Based Reporting System: Drug Seizures by Type

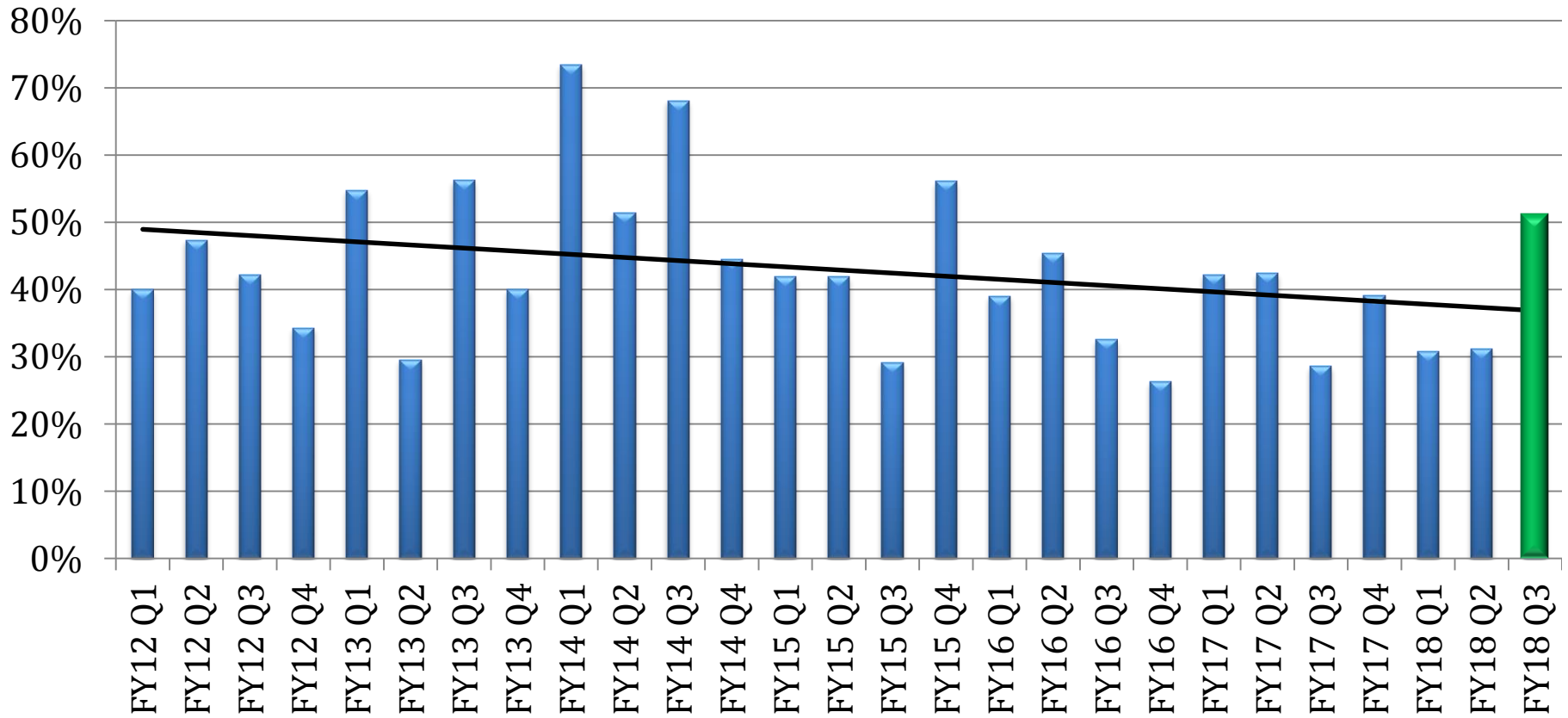


		2012	2013	2014	2015	2016	2017	2012-2017 % Change	2015-2017 % Change
Description									
Cannabinoids	Marijuana	8,163	8,027	8,212	8,588	8,537	8,893	8.9	3.6
	Hashish	47	42	66	45	27	25	-46.8	-44.4
	TOTAL CANNABINOIDS	8,210	8,069	8,278	8,633	8,564	8,918	8.6	3.3
Stimulants	Crack Cocaine	564	317	201	178	185	150	-73.4	-15.7
	Cocaine	388	339	311	338	293	370	-4.6	9.5
	Methamphetamine / liquid	48	83	86	101	120	132	175.0	30.7
	Methamphetamine / Solid	1,124	1,405	1,490	1,541	1,929	2,041	81.6	32.4
	Amphetamines/Methamphetamines	1,216	1,400	1,610	1,929	1,711	1,648	35.5	-14.6
	Other Stimulants	145	122	136	130	223	250	72.4	92.3
	TOTAL STIMULANTS	3485	3666	3834	4217	4461	4591	31.7	8.9
Opioids	Heroin	89	76	77	89	155	207	132.6	132.6
	Opium	23	24	26	49	72	52	126.1	6.1
	Morphine	67	73	62	61	40	37	-44.8	-39.3
	TOTAL OPIOIDS	179	173	165	199	267	296	65.4	48.7
Hallucinogens	LSD/Synthetic Drugs	16	21	23	31	26	27	68.8	-12.9
	PCP	18	14	16	14	10	18	0.0	28.6
	Mushrooms	27	34	33	25	32	24	-11.1	-4.0
	Other Hallucinogens	513	619	412	171	194	181	-64.7	5.8
	TOTAL HALLUCINOGENS	574	688	484	241	262	250	-56.4	3.7
Depressants	Barbiturates	3	9	3	10	13	10	233.3	0.0
	Other Depressants	384	380	423	411	397	331	-13.8	-19.5
	TOTAL DEPRESSANTS	387	389	426	421	410	341	-11.9	-19.0
Other	Ecstasy / MDMA	27	29	19	36	48	58	114.8	61.1
	Unknown Type Drugs	752	692	633	680	620	548	-27.1	-19.4
	Other Narcotics	825	779	730	738	648	606	-26.5	-17.9
	TOTAL OTHER	1604	1500	1382	1454	1316	1212	-24.4	-16.6
Annual Totals		14,439	14,485	14,569	15,165	15,280	15,608	8.1	2.9

10-year Evaluation of Agent Staffing



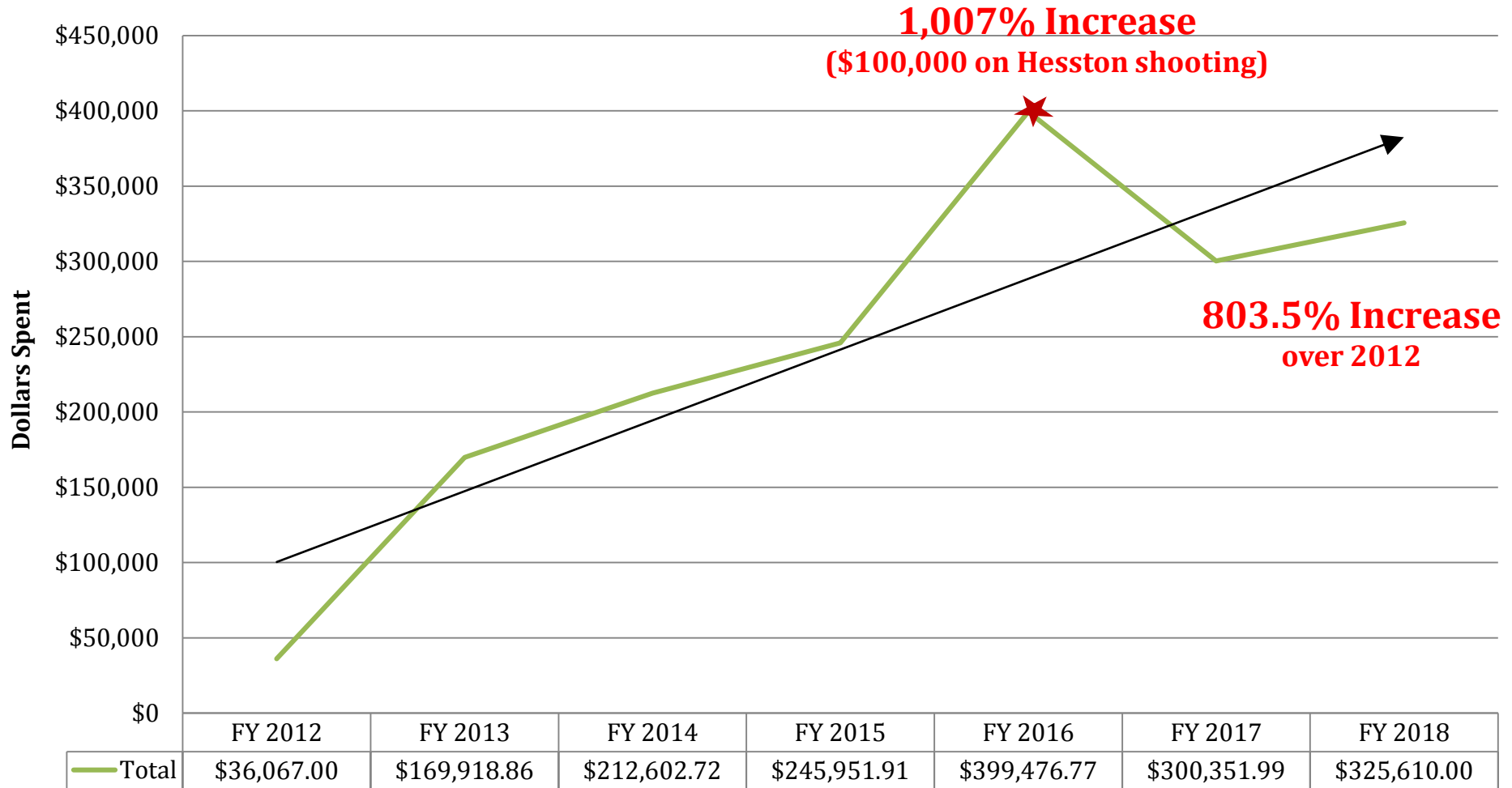
Evaluation of Substantial Case Completion in 90 Days

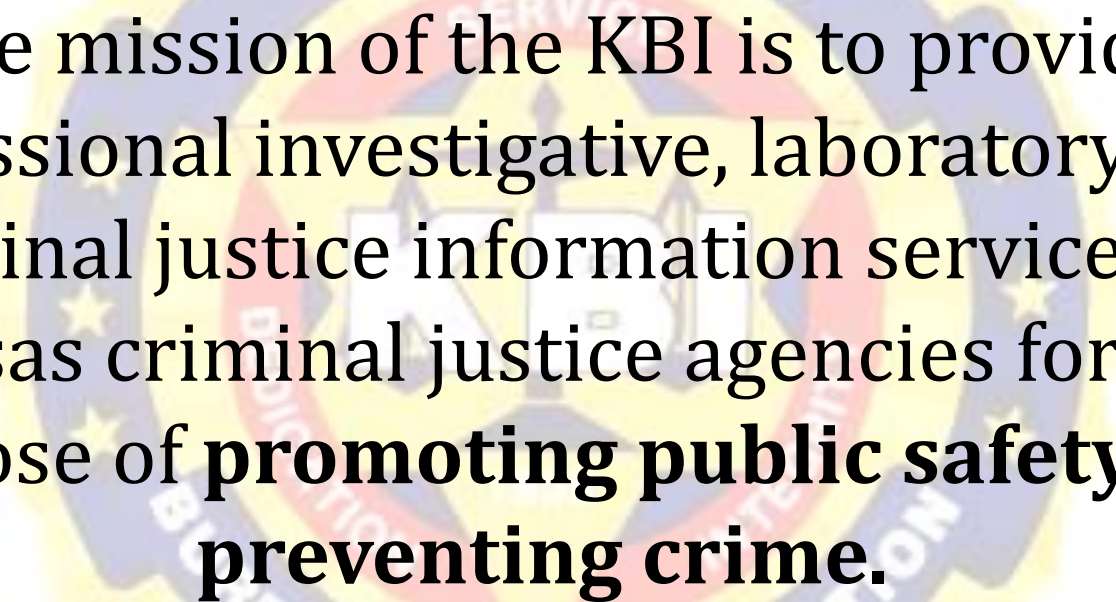


 % Cases Completed in 90 Days

 Linear (% Cases Completed in 90 Days)

KBI Investigations Division Evaluation of Agent Overtime



The seal of the Kansas Bureau of Investigation is a circular emblem with a yellow serrated outer edge. The word "KANSAS" is written in white capital letters on a blue arc at the top. The words "SERVICES" and "INVESTIGATION" are written in white capital letters on a red arc at the top and bottom, respectively. The words "KANSAS" and "BUREAU OF INVESTIGATION" are written in white capital letters on a blue arc at the bottom. The center of the seal features a shield with a white background, a blue border, and a yellow field containing a white scale of justice and a white sword. The shield is set against a red background with a white star on the left and a white star on the right.

The mission of the KBI is to provide professional investigative, laboratory, and criminal justice information services to Kansas criminal justice agencies for the purpose of **promoting public safety** and **preventing crime.**