



Kansas Motor Carriers Association

Trucking Solutions Since 1936

LEGISLATIVE TESTIMONY

before the

House Taxation Committee

Representative Steven Johnson, Chairman

Monday, March 12, 2018

Brett Weis

Great Plains Trucking
President

Lori Borgan

Convoy Systems, LLC
Chairman of the Board

Mark Munds

Groendyke Transport, Inc.
First Vice President

Gale Karlin

Golden Plains Trucking, Inc.
Second Vice President

Kevin Hanschu

J & H Trucking, Inc.
Treasurer

Larry "Doc" Criqui

Kansas Van & Storage
Criqui Corp.
Corporate Secretary

Mike Miller

Miller Trucking LTD
ATA State Vice President

Jason Hammes

Fairview Express LLC
ATA Alternate State VP

Ken Leicht

Miller Trucking LTD/Frito Lay
Public Relations Chairman

Jane DeClue

DeClue Transport
ProTruck PAC Chairman

Jeff Robertson

T T & T Salvage & Towing, Inc
Foundation Chairman

Ed Heath

Assured SRA - An Assured
Partners Company
Allied Industries Chairman

Tom Whitaker

Executive Director

IN OPPOSITION TO HOUSE BILL NO. 2659

MR. CHAIRMAN AND MEMBERS OF THE HOUSE TAXATION COMMITTEE:

I am Tom Whitaker, Executive Director of the Kansas Motor Carriers Association. I appear before you today representing KMCA's Allied Industries Division and the heavy truck dealer members in strong opposition to HB 2659. The bill doubles the sales tax rate on vehicles with a selling price of more than \$100,000.00.

To illustrate the effect of HB 2659, if a Ready-Mix company purchases a new mixer the selling price is approximately \$200,000.00. The purchaser will pay the state and local sales tax which will amount to \$18,300.00 here in Topeka. In addition, the purchaser also pays another 12% Federal excise on the motor vehicle which adds another \$24,000. The total tax paid would be \$42,300. HB 2659 would add an additional sales tax amount of \$13,000.00 bringing the total amount of tax paid to \$55,300.00. We believe this level of tax is excessive and will discourage the sale of trucks in Kansas thereby damaging the truck dealers here in the State.

We have attached five examples of trucks and their selling prices. Each of these trucks is more than \$100,000 and would be subject to the additional sales tax. Mr. Chairman, HB 2659 is bad legislation, bad for Kansas, bad for truck dealers and bad for the heavy truck purchasers.

We strongly oppose HB 2659 and we ask the House Taxation Committee to vote this bill down. I thank you for the opportunity to appear before you today and would be pleased to respond to any questions you may have.



Specifications

Make: Freightliner
Model: CA126
Stock Num: JV9438
VIN: JSJV9438
HP: 455
Year: 2018
Style: Heavy
Mileage: 005
GVW: 53200
Cab: Conventional
Body Type: Highway Tractor
Sleeper: Raised Roof
Sleeper Size: 72"
Price: \$161,231.00

Engine

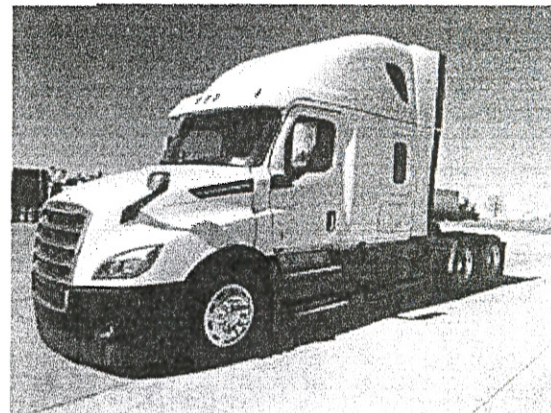
- **Make:** Detroit
 - **Model:** DD15
 - **Brake:** Yes
Transmission: Automated Manual
 12 Spd Detroit DT12

Axl Ratio: 3.08

Wheel

- **Base:** 233
 - **Aluminum:** 10
 - **Fifth:** Air Slide
 - **Tire Size:** 22.5
Suspension: Air Ride/Air Ride Cab
Fairings: Yes
Color: White/Jet Black Met
Interior: Slate Gray

Photo



Description

Two Toned Cascadia Aero! Has (6) Lights Back Of Cab, S/S Quarter Fenders. Includes EW4 & TC3 4yr-500K Warranty And Towing for 4yr-Unlimited Miles. All LED Lighting, Dual 140 Gal Tanks, Espar Bunk Heater & A 1800 Watt Inverter. For More Information On This Unit Please Call Bill, Matt, Rocky or Ethan @ 866-715-675

Scan This



Contact

WRIGHT, TERRY

Location

Truck Center Companies - Wichita
 2955 S. West Street
 Wichita Kansas, 67217

HOURS:

7 Days a Week
 M-F: 6 a.m. to Midnight
 S-S: 6 a.m. to 5 p.m.

NUMBERS:

Toll Free: 800.373.6055
 Phone: 316.945.5600
 Fax: 316.945.5686

Specifications

Make: Freightliner
Model: M2 106
Stock Num: JN5725
VIN: JNJN5725
HP: 230HP
Year: 2018
Style: Medium
Mileage: 5
GVW: 26000
Cab: Conventional
Body Type: Cab & Chassis
Sleeper:
Sleeper Size:
Price: \$105,335.00

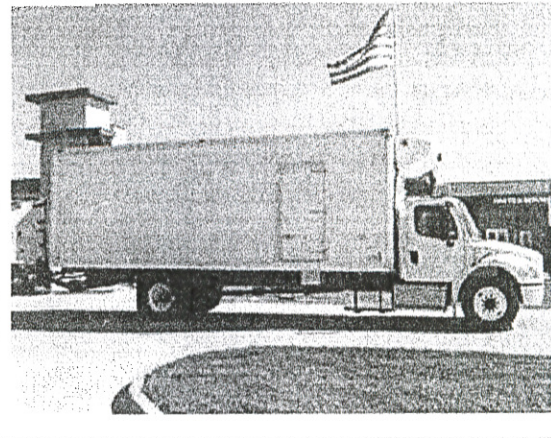
Engine

- **Make:** Detroit
 - **Model:** DD5 5.1L
 - **Brake:**
Transmission: Automatic
 6 Spd ALLISON
Axl Ratio: 6.14

Wheel

- **Base:** 270
 - **Aluminum:** 0
 - **Fifth:** N/A
 - **Tire Size:** 11R22.5
Suspension: Air Ride/Air Ride Cab
Fairings:
Color: WHITE
Interior: GRAY

Photo



Description

2018 FREIGHTLINER M2106 WITH AN ALLISON AUTO AND THE NEW DETROIT DD5 5.1L ENGINE. 26'X102" Refer Van Body with 2,500# Tuk-Away Liftgate. ThermoKing T-680 50 SR unit. PLEASE CALL BRADY, BUCK OR STEVE WITH QUESTIONS @ 800-365-0440

Scan This



Contact

WRIGHT, TERRY

Location

Truck Center Companies - Wichita
 2955 S. West Street
 Wichita Kansas, 67217

HOURS:

7 Days a Week
 M-F: 6 a.m. to Midnight
 S-S: 6 a.m. to 5 p.m.

NUMBERS:

Toll Free: 800.373.6055
 Phone: 316.945.5600
 Fax: 316.945.5686

Specifications

Make: Freightliner
Model: 114 SD
Stock Num: JN2040
VIN: JDJN2040
HP: 410
Year: 2018
Style: Heavy/Vocational
Mileage: 50
GVW:
Cab: Conventional
Body Type: Cab & Chassis
Sleeper: Day Cab
Sleeper Size:
Price: \$175,900.00
Engine
 - Make: Detroit
 - Model: DD13
 - Brake: Yes
Transmission: Automatic
 6 Spd Allison 4500 RDS
Axl Ratio: 4.88
Wheel
 - Base: 242
 - Aluminum: 10
 - Fifth: N/A
 - Tire Size: 22.5
Suspension: Spring/Air Ride
Fairings:
Color: White
Interior: Gray

Photo



Description

Loaded up SD114 with Wood grain dash, extra gauges, leather wrapped steering wheel and much more. Call Kurt, Lee, or Clint for more information.

Scan This



Contact

WRIGHT, TERRY

Location

Truck Center Companies - Wichita
 2955 S. West Street
 Wichita Kansas, 67217

HOURS:

7 Days a Week
 M-F: 6 a.m. to Midnight
 S-S: 6 a.m. to 5 p.m.

NUMBERS:

Toll Free: 800.373.6055
 Phone: 316.945.5600
 Fax: 316.945.5686

Specifications

Make: **Western Star**
 Model: **5700XE**
 Stock Num: **JT3928**
 VIN: **JLJT3928**
 HP: 505
 Year: 2018
 Style: Heavy
 Mileage: 150
 GVW: 52000
 Cab: Conventional
 Body Type: Highway Tractor
 Sleeper: Day Cab
 Sleeper Size:
 Price: \$129,878.00

Engine

- Make: Detroit
- Model: DD15
- Brake: Yes

Transmission: Manual
 13 Spd RTLO-16913A

Axl Ratio: 3.42

Wheel

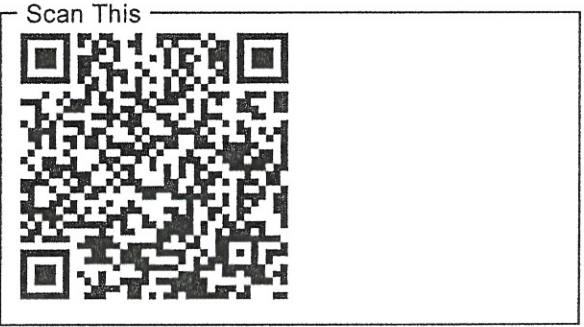
- Base: 200
- Aluminum: 10
- Fifth: JOST 24INCH SLIDE
- Tire Size: 275/80R22.5

Suspension: Air Ride/Air Ride Cab
 Fairings:
 Color: WHITE
 Interior: GRAY



Description

COME AND GET IT. THE BRAND NEW 2018 WESTERN STAR 5700XE DAY CAB WITH A DETROIT ENGINE 505HP, AND A 13SP. EQUIPPED WITH HEATED SEATS YOU WILL SURELY BE WARM. FOR MORE INFORMATION STOP IN AND TAKE A LOOK OR GIVE US A CALL 800-866-2204



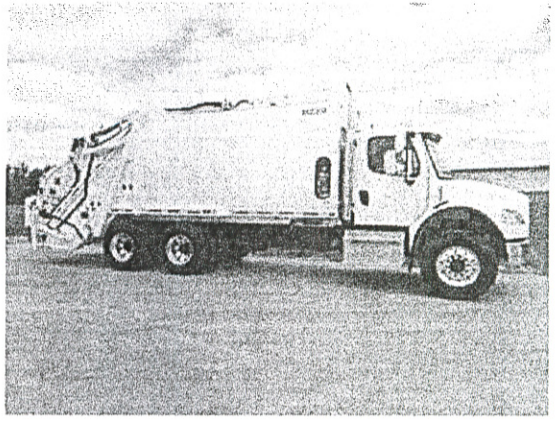
Contact
 WRIGHT, TERRY

<p>Location Truck Center Companies - Wichita 2955 S. West Street Wichita Kansas, 67217</p>	<p>HOURS: 7 Days a Week M-F: 6 a.m. to Midnight S-S: 6 a.m. to 5 p.m.</p>	<p>NUMBERS: Toll Free: 800.373.6055 Phone: 316.945.5600 Fax: 316.945.5686</p>
------------------------------------------------------------------------------------------------------------------------------------------------------------------	-------------------------------------------------------------------------------------------------------------------------------------------------	-----------------------------------------------------------------------------------------------------------------------------------------------------

Specifications

Make: Freightliner
Model: M2 106
Stock Num: JN3513
VIN: 3ALHCYFE1JDJN3513
HP: 350
Year: 2018
Style: Heavy/Vocational
Mileage: 2500
GVW: 62000
Cab: Conventional
Body Type: Other
Sleeper:
Sleeper Size:
Price: \$194,250.00
Engine
- Make: Cummins
- Model: L9
- Brake: YES
Transmission: Automatic
6 Spd ALLISON 3500RDS
Axl Ratio: 5.63
Wheel
- Base: 222
- Aluminum: 10
- Fifth: NONE
- Tire Size: 22.5
Suspension: Hendrickson
Fairings:
Color: WHITE
Interior: GRAY

Photo



Description

2018 FREIGHTLINER M2 106, COMPLETED WITH A Leach 2RIII, 25YARD PACKER. IF YOU WANT TO GET THE JOB DONE IN STYLE, THIS IS THE TRUCK FOR YOU, L9 350HP, AUTO ALLISON 3000RDS, 16K FRONT & 46K REAR. COME AND GET IT! FOR MORE INFORMATION STOP IN AND TAKE A LOOK OR GIVE ROCKY A CALL @866-715-6752.

Scan This



Contact

WRIGHT, TERRY

Location

Truck Center Companies - Wichita
2955 S. West Street
Wichita Kansas, 67217

HOURS:

7 Days a Week
M-F: 6 a.m. to Midnight
S-S: 6 a.m. to 5 p.m.

NUMBERS:

Toll Free: 800.373.6055
Phone: 316.945.5600
Fax: 316.945.5686

