



Corporation Commission

Senate Utilities Committee

I. KCC Involvement in Southwest Power Pool II. Transmission Line Siting

Tom DeBaun

Sr. Energy Engineer

t.debaun@kcc.ks.gov

785-271-3135

February 3, 2015

I. KCC Involvement in SPP

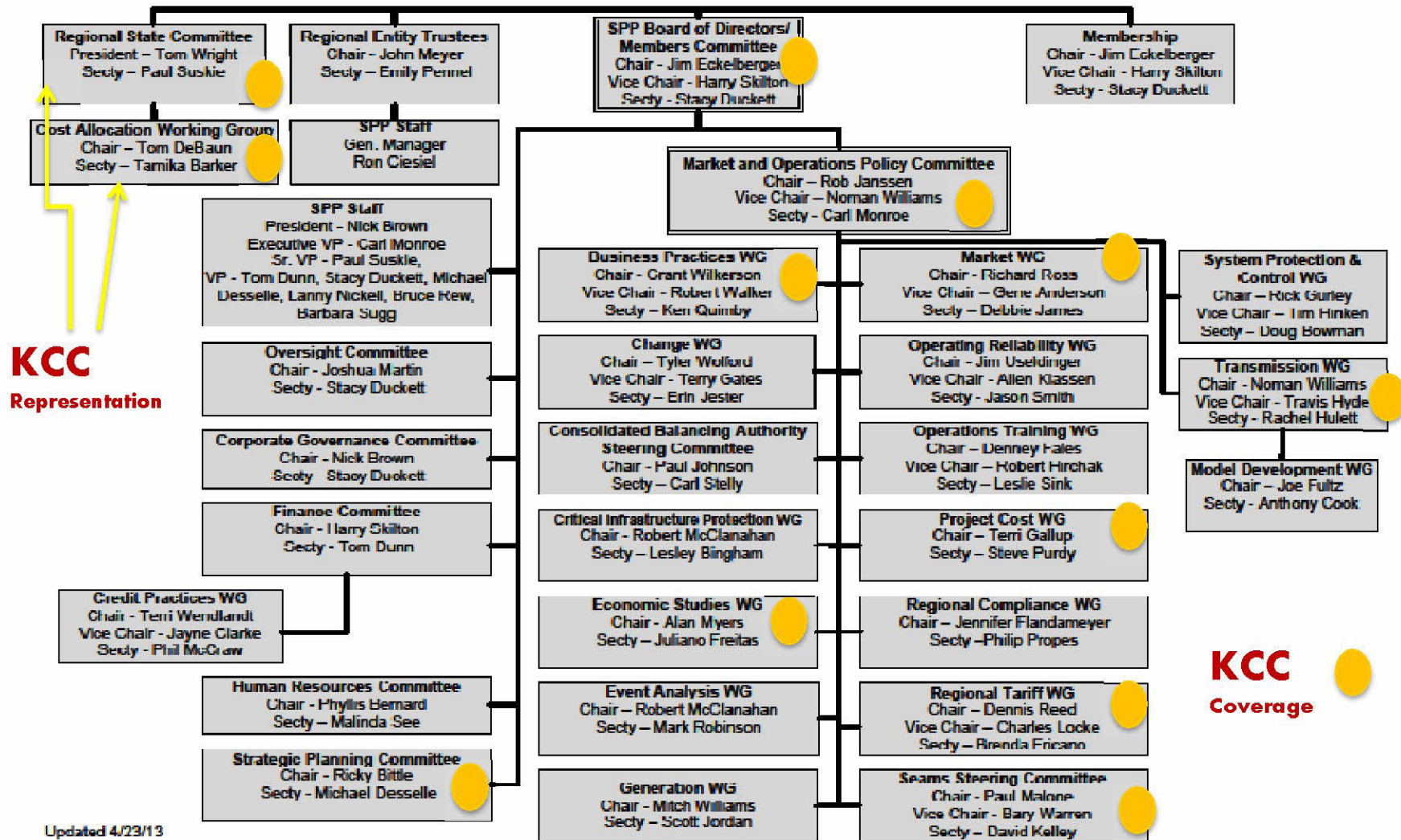


Statutory Authority to Participate

- K.S.A 74-633 - Authority to assign KCC representatives to Regional Transmission Organization
- K.S.A 66-106 – Authority to enter into Interregional Agreements RTO



Group Organizational Chart



Updated 4/23/13

State Regulatory Participation

- **Regional State Committee (RSC)**
 - Cost allocation for transmission upgrades
 - Regional resource adequacy
 - Allocation of firm transmission rights in SPP's markets
- **RSC Member States**

Kansas	Oklahoma
Texas	Nebraska
Missouri	New Mexico
Arkansas	Louisiana (monitors)

KCC Representatives

Shari Albrecht

KCC Chair
Member –
SPP Regional State Committee

Andy Fry

Energy Engineer
Member – SPP Cost Allocation
Working Group

Tom DeBaun

Sr. Energy Engineer

John Bell

Sr. Managing Auditor

Sam Feather

Litigation Counsel

Andrew French

Litigation Counsel

SPP By the Numbers

	<u>2005</u>	<u>2013</u>
	<u>2005</u>	<u>2014</u>
• Membership	43	80
• Employees	131	570
• Trans. Projects Planned/Built (\$)	\$0.552 B	\$8.000 B
• Coincident Peak Demand	38,767 MW	46,300 MW
• Wind Capacity (MW)	1,014 MW	9,000 MW

KCC Watching Where the Money Goes

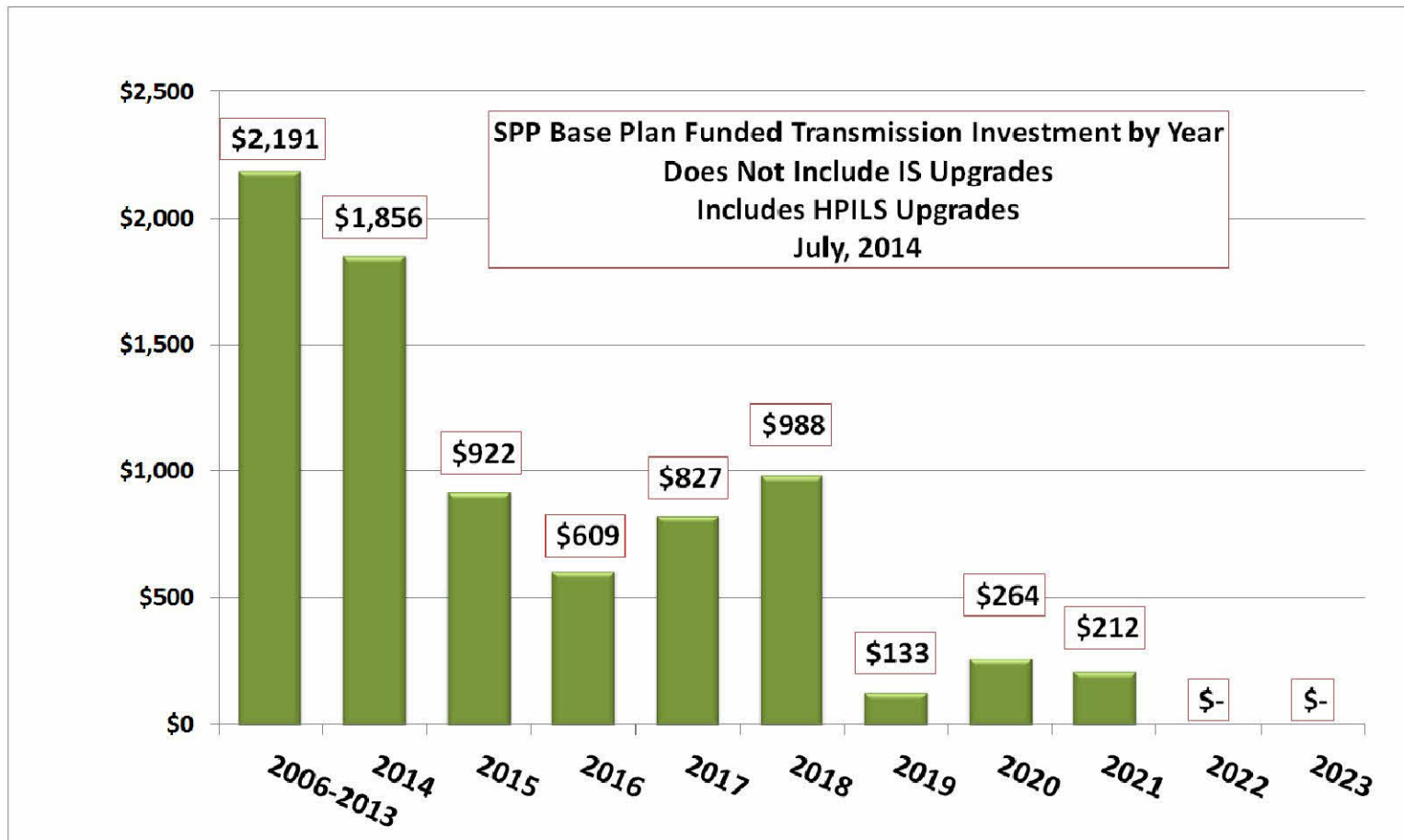
- New transmission projects
- Integrated Marketplace
- Cost allocation –
 - Original Base Plan Funding
 - Balanced Portfolio
 - Highway/Byway
- Regional Cost Allocation Review & Ratepayer Impacts
- FERC Order 1000
- Economic Studies/Metrics

Regional and Zonal Cost Allocation

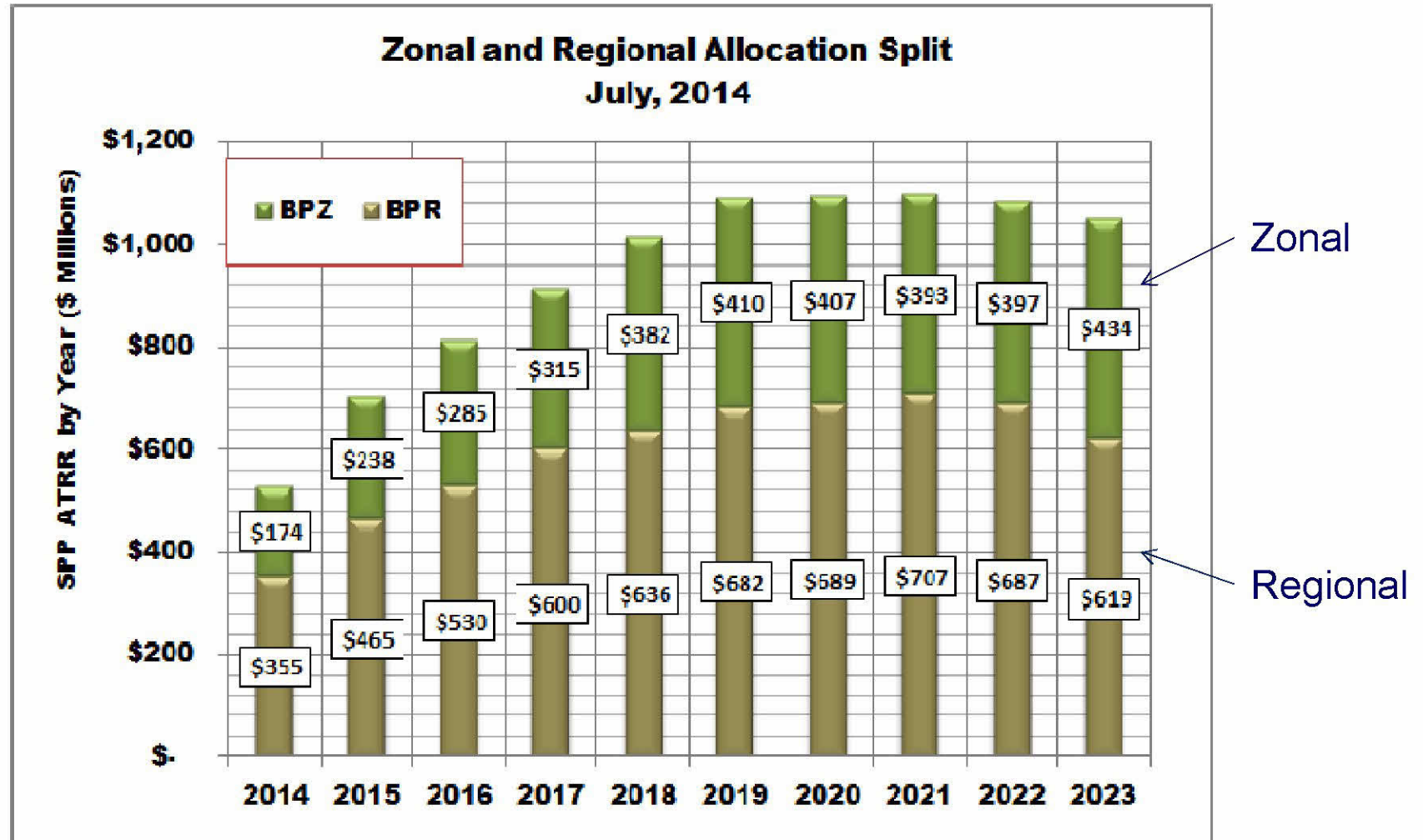
Highway Byway Cost Allocation		
Voltage	Regional	Zonal
300 kV and above	100%	0%
100 kV - 299 kV	33%	67%
Below 100 kV	0%	100%

- Regional (Highway) costs are allocated to the zones based on each zone's Load Ratio Share.
- Zonal (Byway) costs are directly assigned to zones

Transmission Investment in SPP



Annual Revenue Requirements

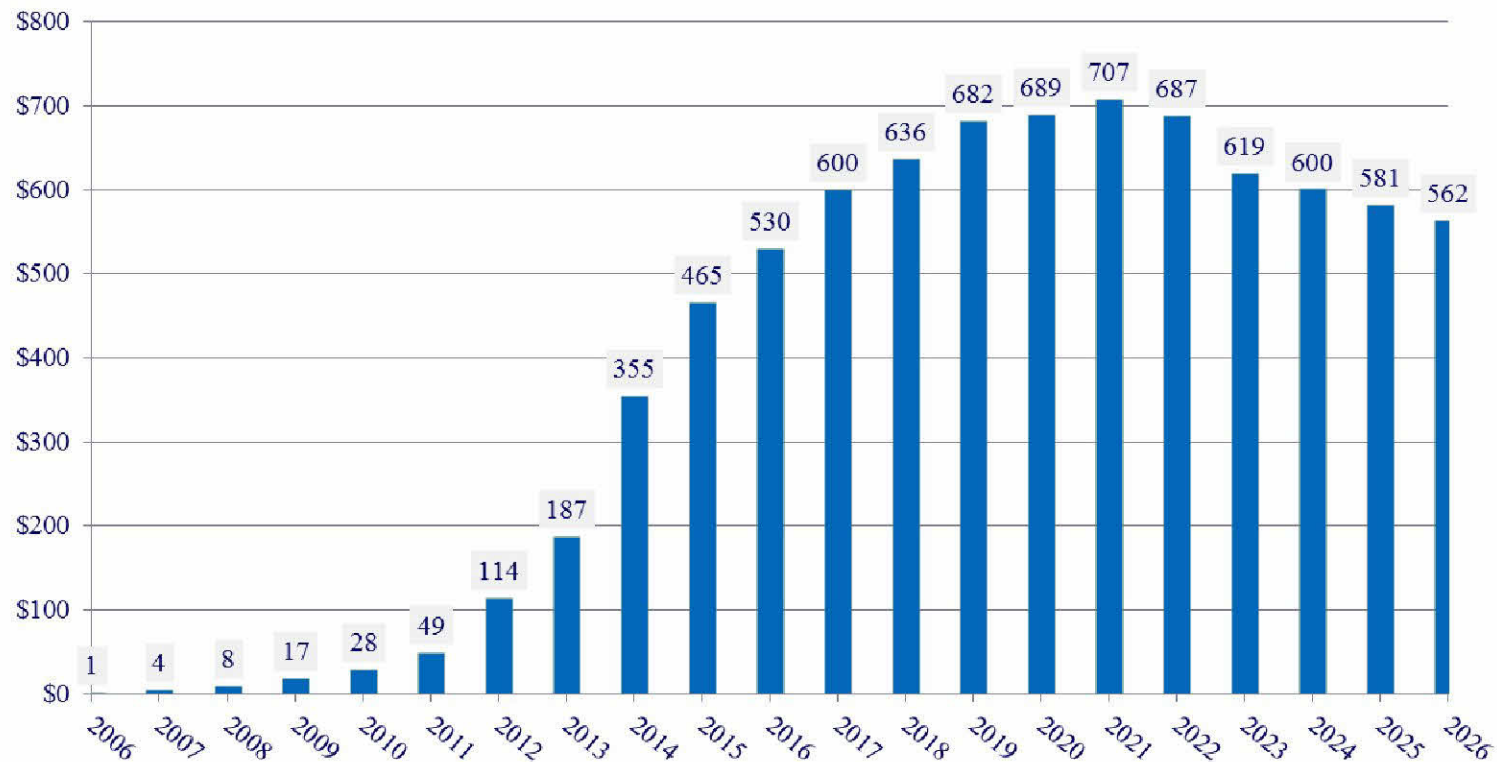


Load Ratio Share (LRS)

Zone Description	SPP LRS	% KS	SPP LRS to KS
American Electric Power	22.60%	0%	
Oklahoma Gas and Electric	14.38%	0%	
Westar Energy	11.55%	100%	11.55%
Southwestern Public Service Company	12.79%	0%	
Kansas City Power & Light	7.96%	45%	3.58%
Nebraska Public Power District	6.60%	0%	
Omaha Public Power District	5.11%	0%	
KCPL&L Greater Missouri Operations Company	4.24%	0%	
Western Farmers Electric Cooperative	3.18%	0%	
Empire District Energy Company	2.64%	5%	0.13%
Grand River Dam Authority	1.99%	0%	
Lincoln Electric System	2.07%	0%	
City Utilities of Springfield	1.51%	0%	
Mid-Kansas Electric Company	1.42%	100%	1.42%
Sunflower Electric Power Corporation	1.09%	100%	1.09%
Midwest Energy	0.85%	100%	0.85%
			18.63%

Where Are We Headed?

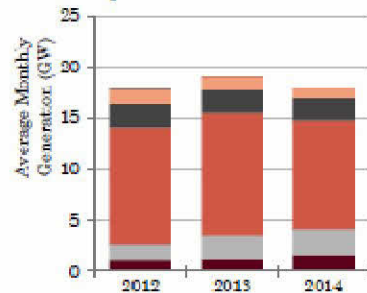
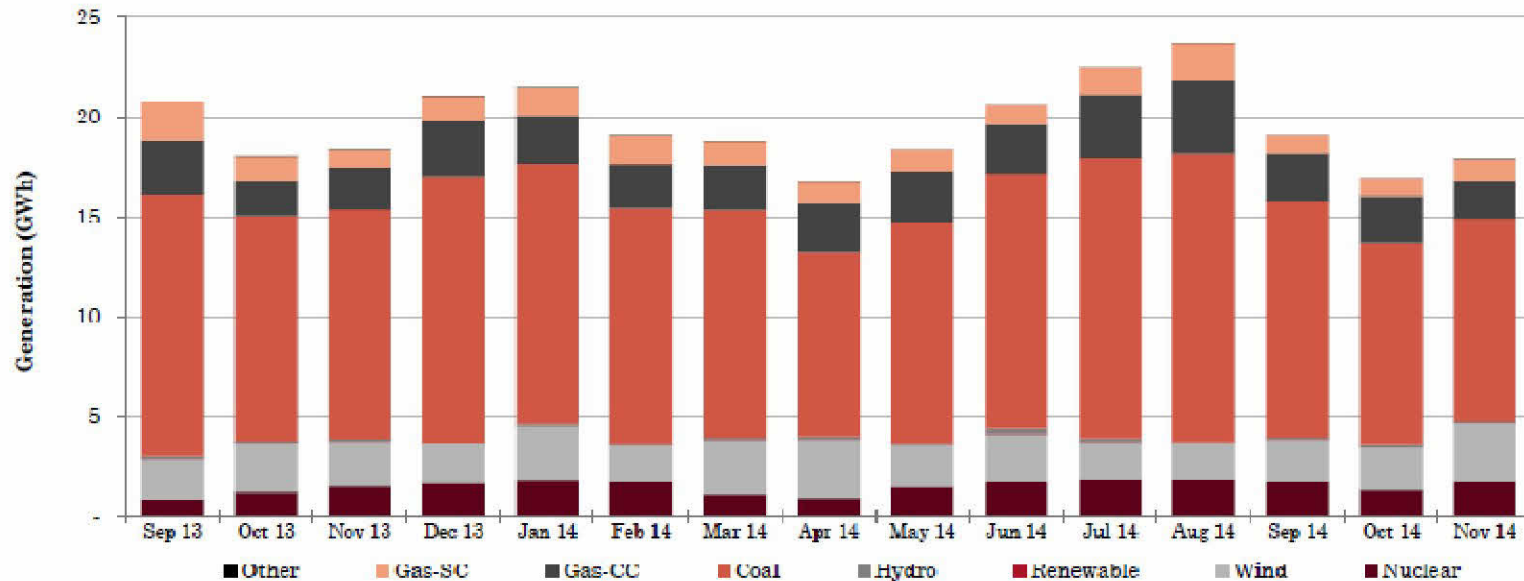
Region-Wide Annual Transmission Revenue Requirements (ATRR) (In \$ millions)



A look at generation “resources”...

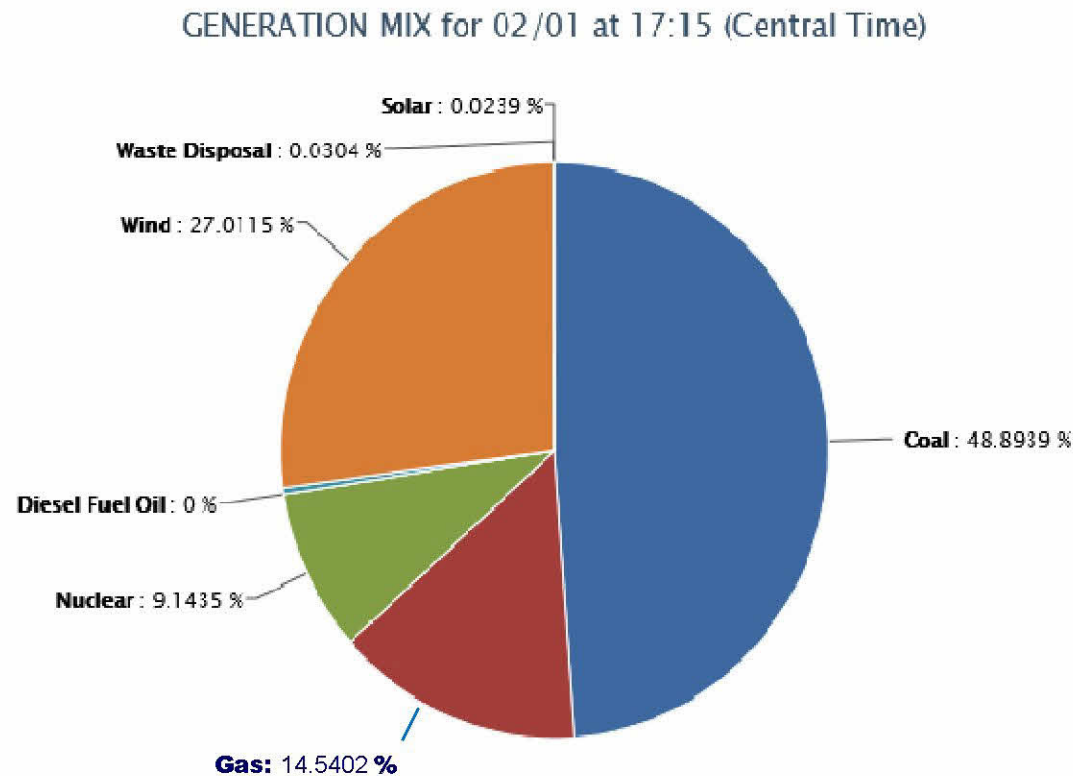


Generation Mix – SPP Region



SPP State of the Market Report
Fall 2014

Fuel Mix – February 2, 2015

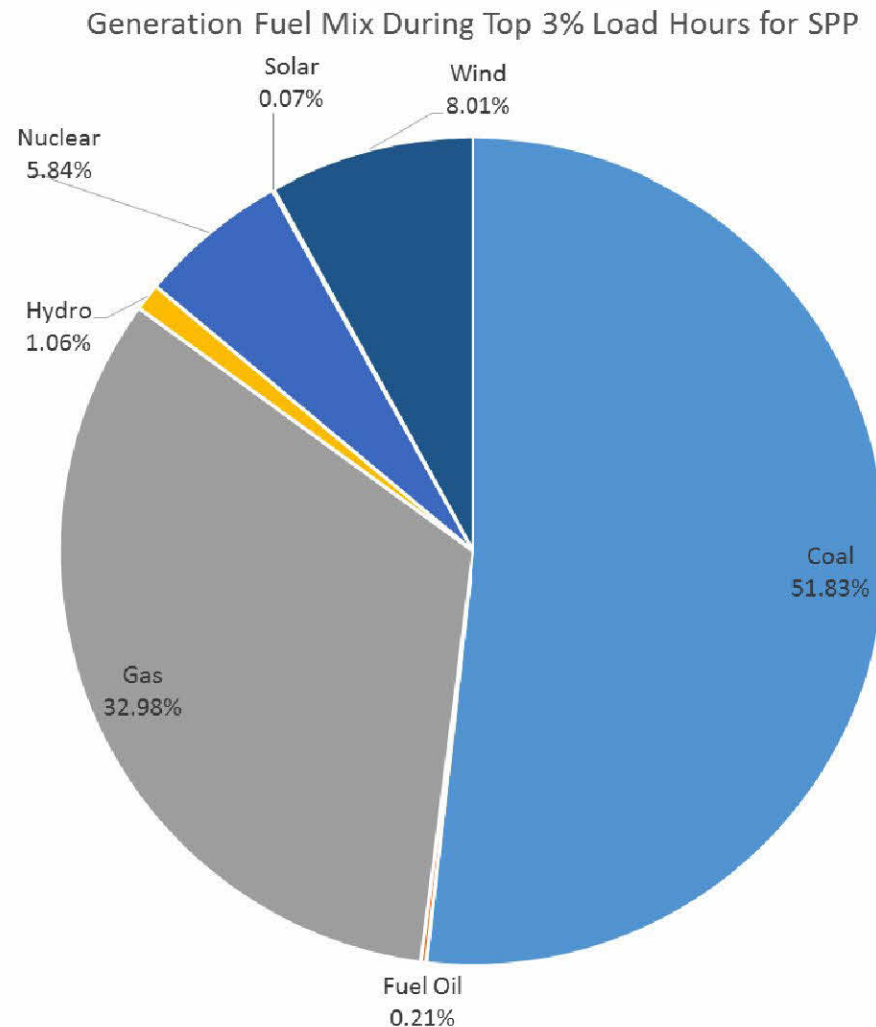


System Load
26,734 MW

Fuel Mix – Summer Peak Hours

This chart displays the actual MW output amounts during the top 3% of load hours during 2014 for the SPP Consolidated Balancing Authority

**2014
System Peak Load
46,300 MW**



II. Transmission Line Siting



Statutory Requirements

- Only transmission lines 230 kV and over
- Reasonableness of the proposed route
- Necessity of the project
- Economic benefits within and outside Kansas
- Public hearing
- KCC Order within 120 days from Siting Application

120-Day KCC Siting Application Schedule

Subject	Location	Date	Statutory Day
Westar Public Info Meeting	Halstead	Mon 10/30/2006 1:00 AM	
Westar - KCC staff meeting	KCC, 2fl Conf	Tue 11/21/2006 9:00 AM	
Westar Public Info Meeting	Gypsum, KS	Tue 12/5/2006 5:00 PM	
Westar - KCC staff meeting	2fl Conf.	Thu 12/7/2006 10:30 AM	
07-715 Westar - Siting Application	KCC	Thu 1/16/2007	1
Send staff data requests	KCC	Thu 1/21/2007	7
Westar siting 07-715 Org. meeting	KCC	Mon 1/22/2007 1:30 PM	
Westar responses to staff data requests due	KCC	Tue 2/1/2007	17
Meeting with land owner - special request	Burrton	Thu 2/10/2007	
Route Survey by Staff	Wichita-Hutch-Salina	Mon 2/19/2007 12:00 AM	
Meeting with land owner - special request	Bentley, KS	Mon 2/19/2007 11:00 AM	
Westar Route Changes	KCC	Fri 2/23/2007 10:30 AM	
07-715 Staff Testimony WSEE Xmission	KCC	Thu 3/15/2007 12:00 AM	60
Harvey County Resolution 2007-13	Harvey Co.	Thu 3/19/2007	
07-715 Public Hearing	McPherson	Tue 3/27/2007 7:00 PM	
Westar Reply	KCC	Mon 4/2/2007 12:00 AM	
Discovery Ends	KCC	Mon 4/9/2007 12:00 AM	
Staff Mtg	KCC	Mon 4/9/2007 9:30 AM	
07-715 Prehearing Conference WSEE	KCC	Tue 4/10/2007 9:00 AM	83
Westar Public Meeting 07-715	Mentor, KS	Tue 4/10/2007 5:00 PM	
Westar Response Due	KCC	Fri 4/13/2007 12:00 AM	
07-715 Technical Hrg. WSEE Xmission	1st Fl Hearing Rm	Tue 4/17/2007 9:00 AM	90
Funding review - Wichita to Reno to Summit Meeting	2nd floor conf room	Fri 4/20/2007 1:00 PM	
07-715 Direct Briefs WSEE Xmission	KCC	Tue 4/24/2007 12:00 AM	
07-715 Comm Order, WSEE Xmission	KCC	Wed 5/16/2007 12:00 AM	120

Transmission Line Siting Statutes

- 66-1,177 Definitions
- 66-1,178 Hearings and Final Order deadlines
 - Notice of Public Hearing to land owners within 660 feet of the centerline of the proposed route
 - Public Hearing in the first 90 days in one of the counties that the proposed route traverses
 - Evidentiary Hearing is optional
 - Final Order within 120 days
- 66-1,179 Notice of Public Hearing
 - One each week for two weeks prior to the hearing, the last publication at least 5 days prior to the hearing, in each county included in the proposed route
 - Written notice via certified mail to each landowner at least 20 days prior to the public hearing
 - Commission may order the applicant to make such publications
- 66-1,180 Commission Responsibility
 - Commission to determine reasonableness and necessity of the route.
 - Review economic benefit within Kansas & outside Kansas

Questions?