



KANSAS HIGHWAY PATROL

Presentation to:

The Joint Committee on Kansas Security

Topic: Statehouse Security

Presenter:

Captain Andrew Dean
Kansas Highway Patrol -
Capitol Police
November 10, 2016



KANSAS HIGHWAY PATROL

Capitol Police Overview:

- Capitol Police Headquarters is currently located in the Docking State Office Building, with many of our full-time uniformed officers working from the Statehouse.
- Capitol Police is tasked with providing safety and security and police services to State employees and visitors who occupy the State owned and/or leased properties we serve, in Shawnee County, to include the Capitol Complex and Statehouse.
- Coordinate and provide security to events for the Complex, while conducting risk assessments for such events.
- In 2015-2016, many steps were taken to improve our investigative services for Capitol Police.
 - Investigator was added to the CIU in 2015 (2 investigators currently)
 - Criminal Investigators are assigned to higher profile cases and work closely with our Federal, State and Local law enforcement agencies
 - Have received additional training in the area of crime scene security, evidence collection, crime scene photography, fingerprinting, interview and interrogation techniques, etc.
 - Capitol Police supervisors regularly meet with investigators to stay current
- Our public resource officers continue to provide Emergency Preparedness and Kansas Active Shooter Mitigation (KASM) training to State employees/agencies.
- With the acts of violence continuing to occur throughout our country, our agencies have been tasked with reaching out to all citizens to encourage and reinforce the need for State employees and citizens to remain extra vigilant and report any suspicious activity.
- Safety & Security Liaison Team (SSLT) meets on a semi-annual basis to discuss safety and security issues and concerns for the Complex. K.S.A. 75-4514 SSLT



KANSAS HIGHWAY PATROL

Capitol Police Overview Continued...

- Major Mark Goodloe (East Region Commander) – Retiring in December
- Capt. Andy Dean (Capitol Police / Troop K Commander)
- Six (6) Lieutenants:
 - One (1) Administrative Lieutenant
 - Three (3) Field Lieutenants
 - One (1) Statehouse Lieutenant
 - One (1) Special Services Lieutenant (Part-time LEO's & PRO)
- Seventeen (17) Full-time LEO's:
 - Eleven (11) Officer's assigned to street patrol (A, B & C Shift)
 - Four (4) assigned to Bicycle Unit
 - Two (2) assigned to Criminal Investigations
 - Three (3) Officer's assigned to Cedar Crest
 - Three (3) Officer's assigned to Statehouse
- Twenty-four (24) Uniformed TOTAL (Capt. Included)
- Twenty-one (21) Part-time LEO's (Assigned to Insurance, Zibell, Judicial Center and Memorial Hall Buildings and Statehouse)
- Twenty (20) Capitol Area Guards (Assigned to Docking, Curtis, Scott, Landon and Eisenhower Buildings, the Statehouse and Central Monitoring)



KANSAS HIGHWAY PATROL

Capitol Police Overview Continued...

- Four (4) Communication Specialists
- Two (2) Clerical Staff
- Seventy-one (71) Personnel TOTAL
- Five (5) Vacancies (challenges with hiring; KHP Career Progression Plan; Capitol Police Recruitment Efforts)
- Officer Steve Crumpler Retiring in December



KANSAS HIGHWAY PATROL

Facebook, Twitter & Nixle Connect:



Recently, Capitol Police went live on Facebook and Twitter:

- ❖ Facebook – Kansas Capitol Police
- ❖ Twitter – KS Capitol Police



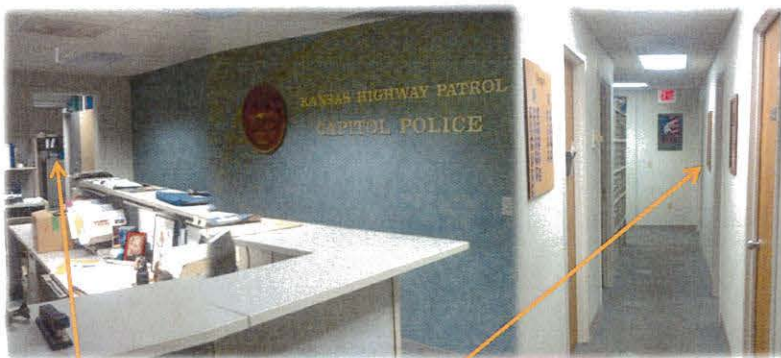
Nixle Connect:

- Nixle Connect is a free mass-notification tool connecting us to state employees within the Capitol Complex
- Sign up is required: <http://www.nixle.com>
- When an event occurs our dispatchers can send out messages as an alert, advisory or informational message
- We currently use SMS and email messages.



KANSAS HIGHWAY PATROL

Capitol Police "Troop K" Headquarters



Communications Center

Central Monitoring

Key Card Office



KANSAS HIGHWAY PATROL

Key Card Access Control:

- Capitol Police oversees the key card access control system for the Capitol Complex and other State properties we serve.
 - Responsibilities include the issuance, activation and deactivation of key cards, as well as the monitoring of our system users
- In 2014, questions were raised concerning the number of key card holders with Statehouse access.
 - In 2014, there were approximately 2,027 key cards with Statehouse clearance
 - Currently, there are 991 key cards with Statehouse clearance (861 with 24/7)
 - Default list (no State agency listed) and key cards with no activity were scrutinized heavily, with the majority of these key cards being deactivated
- In 2014, a Key Card Access Control policy and forms were created, to improve the overall security of this particular system.
 - Each agency must now have a Key Card Coordinator
 - Coordinator must schedule appointments
 - Employee must produce a valid photo ID, prior to being issued a key card
 - Statehouse access is only reserved for employees to the Capitol Building; to individuals assigned to the Governor's Cabinet and to their Deputy Secretaries; Legislative Liaisons and Public Information Officers
- Concerns: We continue to receive calls, after-hours, for emergency key card deactivations (i.e. lost or stolen cards, etc.)



KANSAS HIGHWAY PATROL

Central Monitoring:

- Capitol Area Guards currently monitor 286 security cameras for over 15 State owned or leased properties, in Shawnee County.
 - Pan/tilt/zoom (PTZ) and fixed security cameras
- Of the 286 cameras, 109 cameras are assigned to the Statehouse (86 interior / 23 Exterior)





KANSAS HIGHWAY PATROL

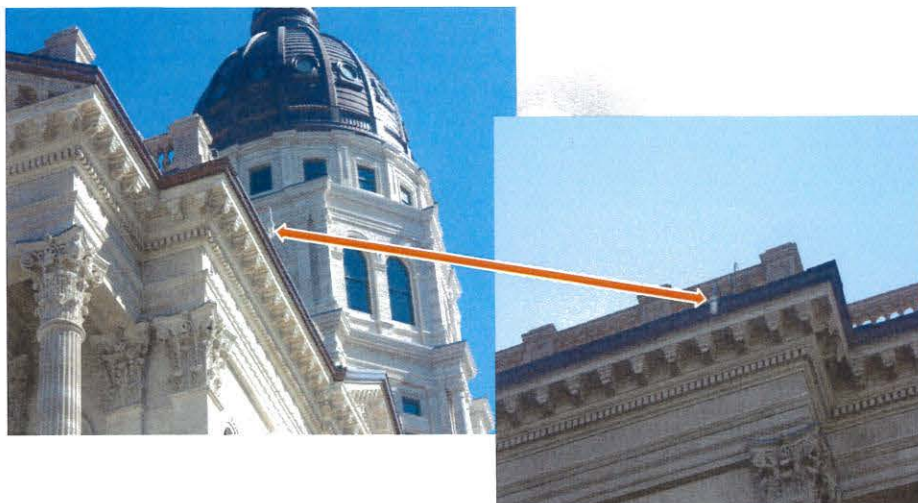
Central Monitoring Continued...

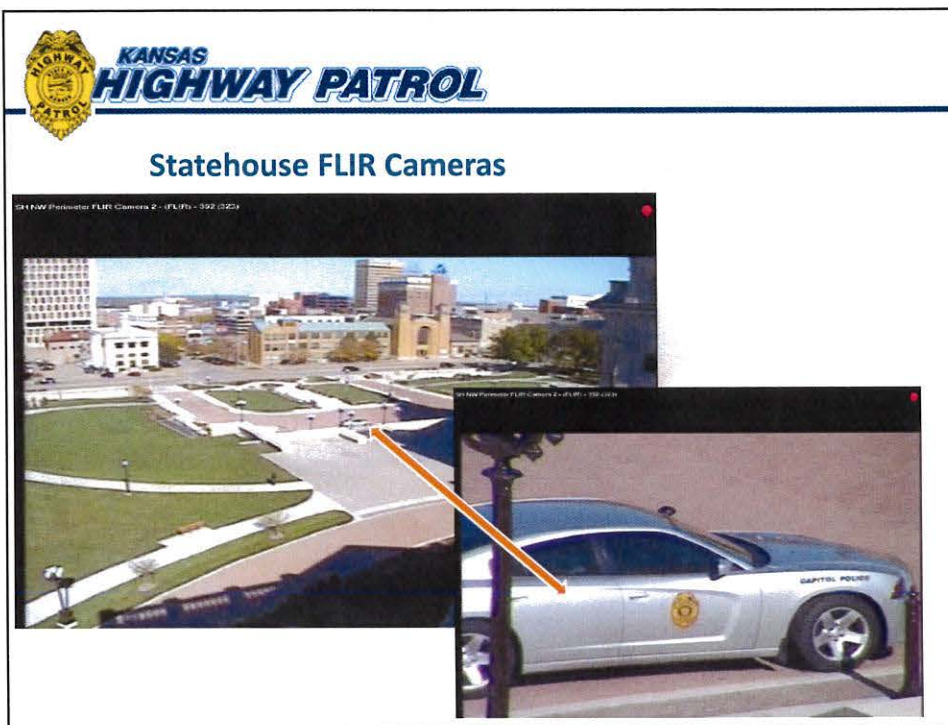
- The KHP's security camera system has proven to be an invaluable tool for Capitol Police and our partnering agencies. (i.e. Falls, flag burning incident, empty powder keg, Memorial Hall vandalism, vehicle accidents, etc.)
- Due to the heightened demand of our security camera monitoring services, our agency is looking to replace the existing computer system for Central Monitoring.
 - Server storage is limited (approx. 45 days of storage)
- In September, the KHP and Department of Administration/Facilities jointly agreed to replace the existing security camera infrastructure for Cedar Crest.
 - New fiber and PTZ cameras (low light capabilities) being installed
 - Projected completion is early 2017
- Mr. Jeff Cranor was hired by the KHP to assist with the repair and maintenance of our physical security systems.
 - Mr. Cranor retired from the Federal Bureau of Prisons with 30+ years of technical experience supporting various electronic communications systems, including access control and video surveillance.
- Four (4) FLIR and two (2) Infrared cameras assigned to the Statehouse. The FLIR cameras are mounted to the East & West wings of the Capitol, with the Infrared cameras being mounted near the Statehouse loading docks.



KANSAS HIGHWAY PATROL

Statehouse FLIR Cameras







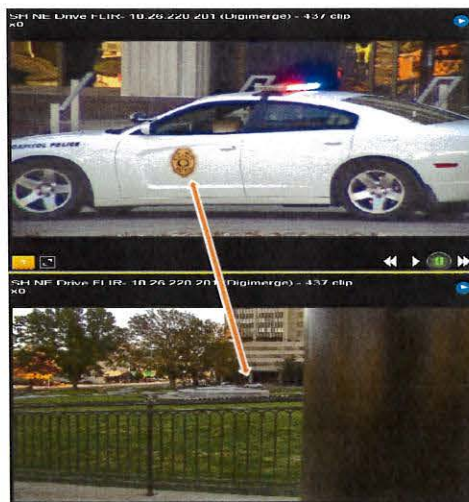
KANSAS HIGHWAY PATROL

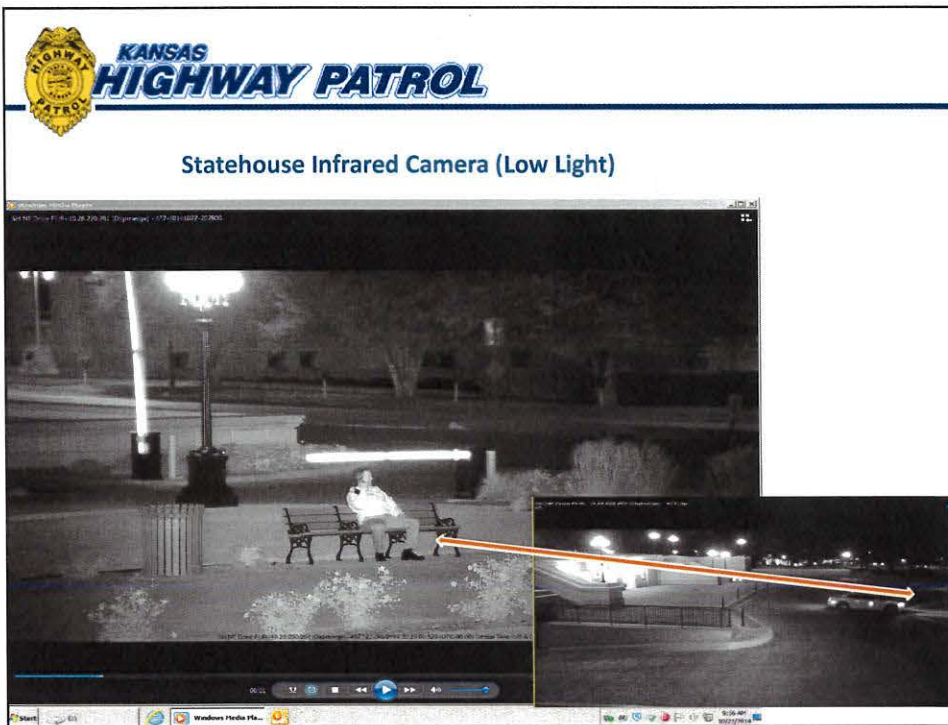
Statehouse Infrared Cameras



KANSAS HIGHWAY PATROL

Statehouse (North Drive) Infrared Camera







KANSAS HIGHWAY PATROL

Camera / Access Work Orders:

- In 2013, OITS and KHP IT staff implemented an initiative to improve the level of customer service for our Access Control and Video Surveillance systems. With the help of OITS, KHP IT staff built a website that is used to submit service requests online.
 - This ensures proper tracking, notification, and response of new or repair service requests
 - Requests continue to be submitted via the web using the following link:
<http://oits.ks.gov/khpsimplex/>
- Overall, the service request website has been a huge benefit for service, as well as a great asset for ticket history. Agencies have been very helpful in adopting the website's use.
- After-hours emergency service requests are submitted, by phone, to Capitol Police Central Monitoring.



KANSAS HIGHWAY PATROL

Capitol Police Communications Center:

- As stated, we currently have four (4) Communication Specialists assigned to the Troop K Dispatch Center.
 - Monitor Capitol Police and local law enforcement agency radio traffic
 - Receive emergency phone calls for the Complex through our emergency line:

296-1111

- Regularly utilize our CAD and NCIC systems
- Communications Center Hours:
 - 6:00 am to 10:00 pm
 - KHP Central Communications M" (Salina) provide to 6:00 am





KANSAS HIGHWAY PATROL

Capitol Police Bicycle Patrol:



KANSAS HIGHWAY PATROL

Capitol Police Bicycle Patrol Continued...

- Currently four (4) officers assigned to bicycle patrol
- In 2015, three (3) new TREK (Police Rated) mountain bikes were purchased, giving us a total of four (4) TREK bikes for the unit
- New uniforms, coats and equipment were purchased in 2015
- All officers certified through International Police Mountain Bike Association (IPMBA)

Purpose:

- Heightened security and visibility in the Complex
- Helps to support our community policing efforts and the Mission and Goals of Capitol Police
- Highly maneuverable with quicker response times
- Used for off-road patrols and special events (i.e. Cedar Crest trails, parades, etc.)
- Keeps officers physically fit and is good for their overall health



**KANSAS
HIGHWAY PATROL**

Statehouse Security:

- Personnel currently assigned to the Capitol building:
 - Four (4) full-time Law Enforcement Officers (LT Included)
 - Five (5) part-time Law Enforcement Officers
 - Two (2) Capitol Area Guards
- Officer's and Guards conduct foot patrols both in and around the Capitol Building
 - Respond to calls for service (medicals, suspicious activity, etc.)
 - Provide additional coverage for special assignments and events
- Guards provide coverage during evening and night-time hours (24 hour coverage)
- Capitol Police is currently tasked with screening all visitors to the Statehouse



**KANSAS
HIGHWAY PATROL**

Statehouse Security Continued...

- Sub-monitoring station located in Visitor's Center (back-up for Central Monitoring)
- The speaker system to the right allows Capitol Police to broadcast automated alerts/warnings for fire, active shooter and emergency type situations.





KANSAS HIGHWAY PATROL

Statehouse Security Screening:

- Currently, Capitol Police is operating on the following security screening equipment:
 - Two (2) Astrophysics, Inc. X-Ray inspection systems (manufactured June 2010)
System Readings (October 2016) 141,000 / 112,000 scans
 - Two (2) Garrett PD 6500i magnetometer "metal detector" systems
- To gain access to the Statehouse, each visitor must submit to our screening processes



KANSAS HIGHWAY PATROL

Statehouse Security Screening Continued...

- Systems were exposed to the Statehouse renovation project (dust, relocation, etc.).
- Warranties have expired.
- Problems with systems shutting down unexpectedly...
 - East X-Ray is kept running to avoid lengthy start-up periods
 - Systems are unreliable and could shut down at any time
- Systems out of alignment (i.e. frayed belts)
- In 2015, members of the Department of Administration/Facilities, Legislative Coordinating Council (LCC) and KHP, all met to discuss replacement and finance options for the Statehouse screening equipment.
- Product and cost information was obtained from the following companies: SecurMAR, LLC (Smiths Detection); U.S. Testing Equipment, LTD (Rapiscan Systems); Dailey-Wells, Inc. (AS&E) and Astrophysics.
 - Purchase and purchase to lease options were considered
 - Option of adding a third X-Ray inspection system and magnetometer to the East loading dock (for larger packages, deliveries, catering, etc.) was considered
- Estimates were comparable amongst all four companies.
 - AS&E x-Ray inspection systems operate on the latest backscatter technology
 - Expensive repair costs and very little exposure



KANSAS HIGHWAY PATROL

Statehouse Security Screening Continued...

- With the issues we continue to experience, and if our screening processes are still acceptable, I would recommend we begin looking at options to replace these outdated systems.
- Would like to focus on Astrophysics cutting-edge technology and software options for the XIS-6545DV X-Ray inspection system, in the coming slides.

If it is determined that our security screening processes are still acceptable for the Statehouse, and if funding becomes available, the following should be considered when looking at options to replace our existing security screening systems:

- Dual view systems are now available through Astrophysics and are manufactured with state of the art technology and program software.
 - The XIS-6545DV features dual X-Ray generators to create two different image perspectives which can be manipulated independently, improving threat identification
 - 6 Color Imaging is now available and "marks a significant step forward in threat discrimination and material identification" and "enables high security threats to be more easily identified by operators; including illicit goods, explosives, sharpened implements, and other weapons or contraband".



KANSAS HIGHWAY PATROL

Statehouse Security Screening Continued...

- Astrophysics X-Ray Inspection Systems are equipped with Real-Time Diagnostics, which allows users to monitor system health.
- The dimensions of the new dual view Astrophysics systems are comparable to the dimensions of our current systems.
- Astrophysics has offered to include *threat imaging software* and *on-sight training* to our officers at no additional cost.
- The Computer Based Training (CBT) option does come at a \$4,500 cost, but would be a desirable feature.
 - Two part Operator and Simulator course designed to enhance operators threat detection and X-Ray image interpretation skills (Available on CD or via online link)
 - Threat recognition training isn't something we've provided to our officers in the past (OJT)
- An extended warranty is recommended for each system (2-5 years).
 - Silver Warranty – 2 hour response by phone; 72 hours on sight (First year at no cost)
 - Gold Warranty – 2 hour response by phone; 48 hours on sight
 - Platinum Warranty – 2 hour response by phone; 24 hours on sight



KANSAS HIGHWAY PATROL

Statehouse Security Screening Continued...

- If the magnetometers are replaced, the old systems would still be used for special events.
- Astrophysics is a privately owned company (City of Industry, California U.S.A.)
- There are lease to purchase options through Wells-Fargo (\$55K limit for 36 or 60 months)



KANSAS HIGHWAY PATROL

Cost Estimate: Astrophysics XIS-6545DV X-Ray System

	<u>Quantity</u>	<u>Unit Cost</u>	<u>Extended Cost</u>
➤ X-ray Inspection System – XIS-6545DV	2	\$49,000	\$98,000
➤ Extended Warranty (Silver Plan)	2	\$24,149	\$48,298
➤ 0.5m Entry Roller Table	2	\$540	\$1,080
➤ 1.0m Exit Roller Table	2	\$765	\$1,530
➤ Screener Assist (SA)	2	No Cost	No Cost
➤ Threat Image Projection (TIP)	2	No Cost	No Cost
➤ Computer-based training (CBT) program	1	\$4,500	\$4,500
➤ Freight	2	\$1,636	\$3,272
➤ Installation & Training	2	\$2,000	\$2,000
➤ HI PE Plus Multi Zone Metal Detector	2	\$3,700	\$7,400
Total		\$86,290	\$168,080

Loading Dock Options: (Not recommended at this time)

➤ X-Ray Inspection System – XIS-100XDV	1	\$66,300	\$66,300
➤ Extended Warranty; Roller Tables; Install, etc.	1	\$42,205	\$42,205
Total			\$108,505