

# House Committee on Energy & Environment Briefing on Midwest Energy

By Earnie Lehman, President and General Manager, January 24, 2013



Midwest Energy, Inc.



# Who Are We?



Midwest Energy, Inc.

- A customer-owned cooperative electric and natural gas utility in business since 1939.
- Vertically integrated...we own generation and transmission facilities as well as distribution facilities. Most electricity, however is bought from Westar and wind producers.
- 280 employees with 29 work locations and an average of 16 years of service.
- A leader in energy efficiency. We work to minimize your utility bill!

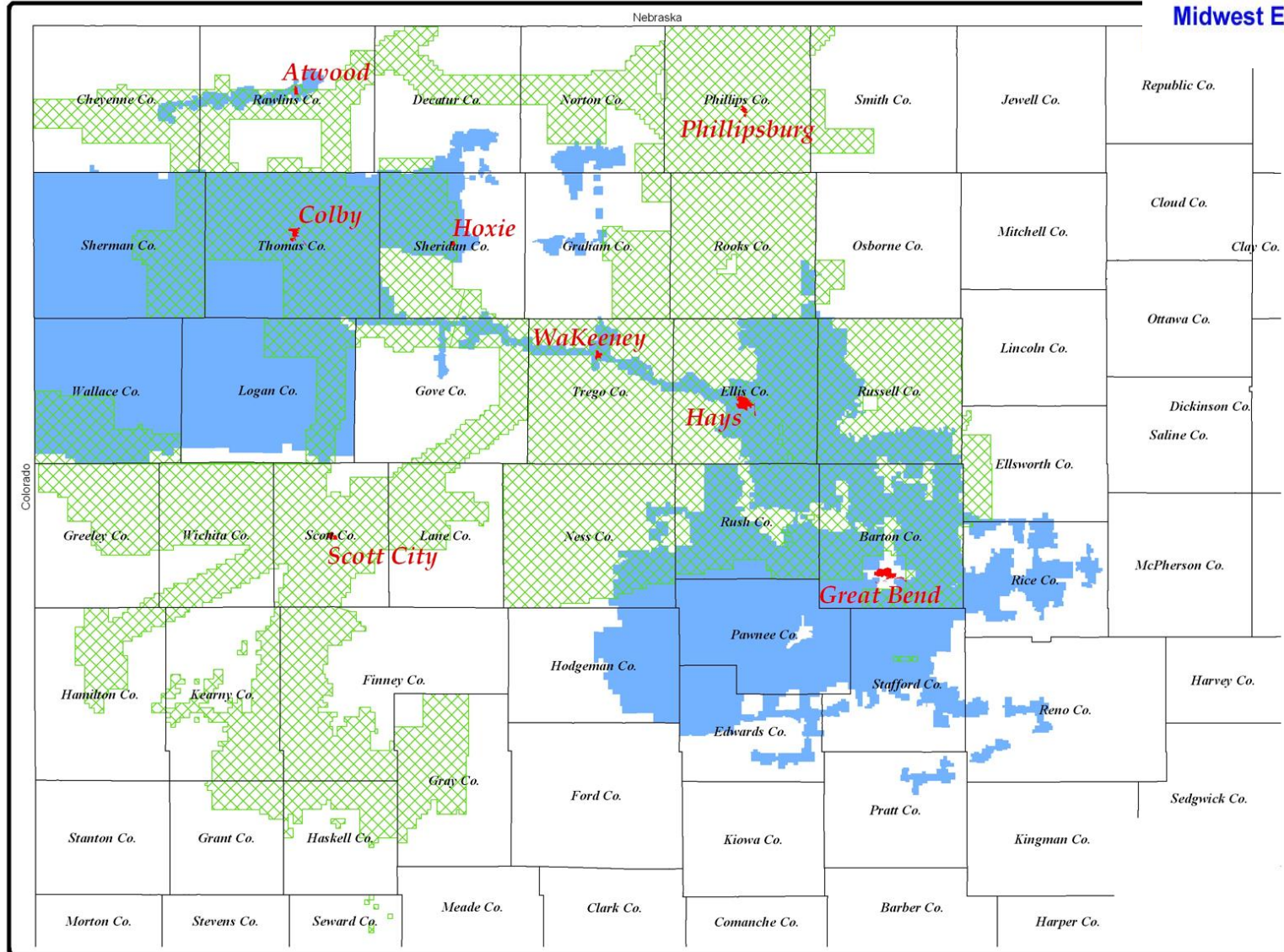




# Where We Provide Service



Midwest Energy, Inc.



# Some Numbers That Tell Our Story



Midwest Energy, Inc.

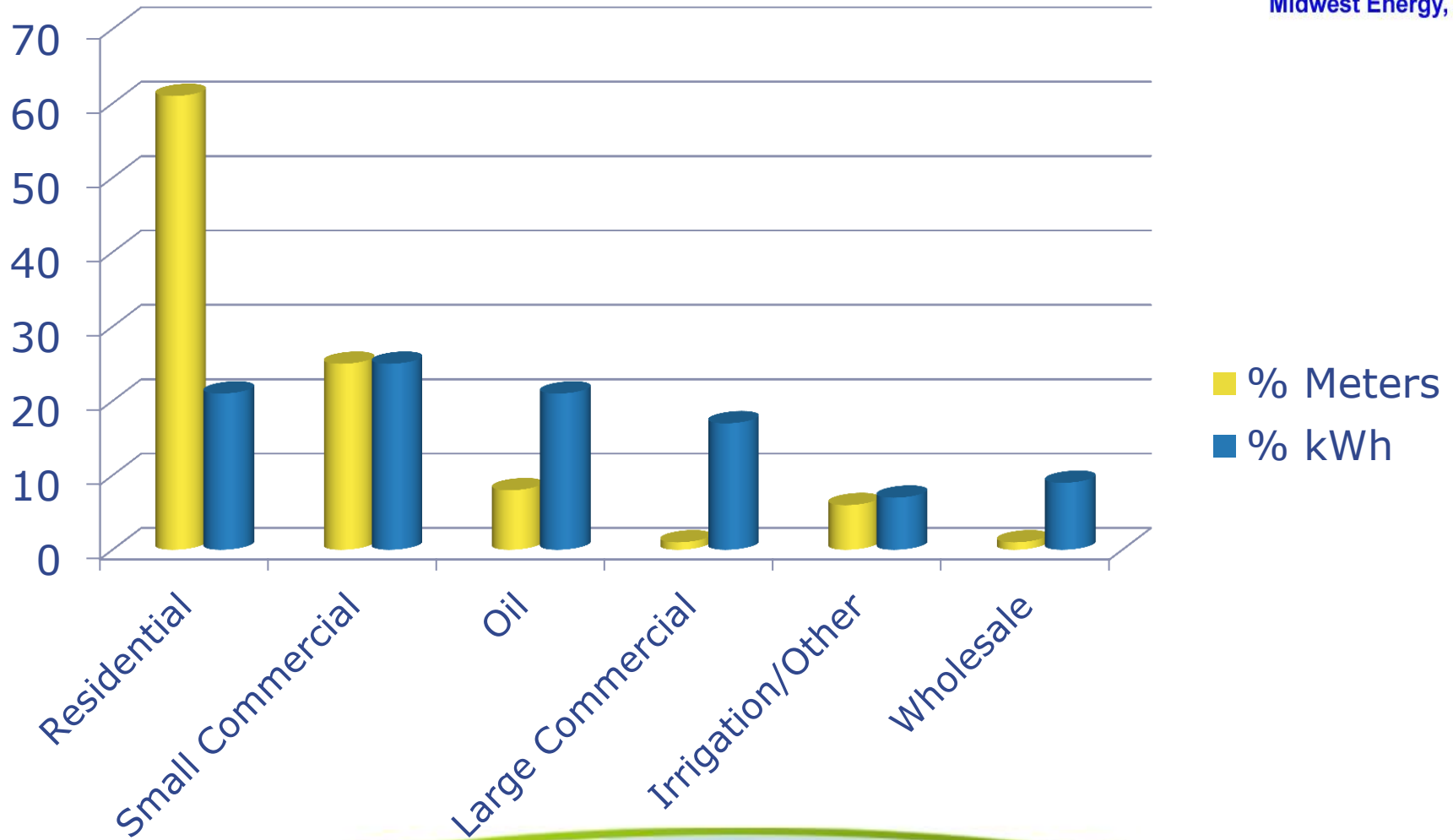
- 50,000 electric customers, 42,000 gas customers with about a third receiving both services. \$200 million in annual revenues.
- \$386 million invested in utility plant, with about \$40 million of new construction per year.
- 395 MW peak electric load.
- Irrigation is about half of our gas business.



# Electricity, Who Buys It?



Midwest Energy, Inc.



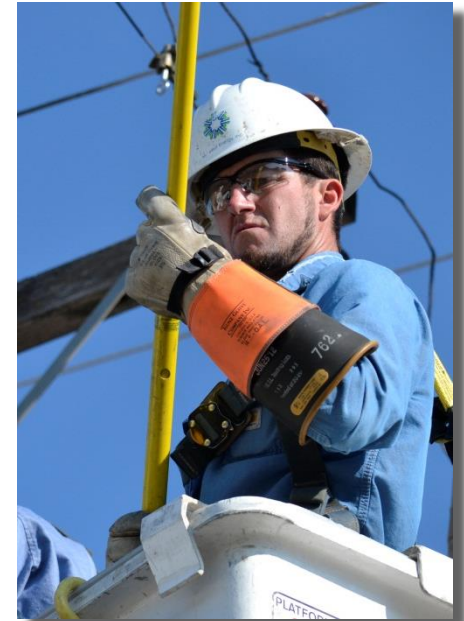


# Our Big Issues



Midwest Energy, Inc.

- Our costs continue to increase faster than the incomes of our customer-owners.
- Future power supply
- Water
- Long-term viability of the smaller communities we serve.



**Thank you. We would be delighted to show you more of Midwest Energy!**



**Midwest Energy, Inc.**

