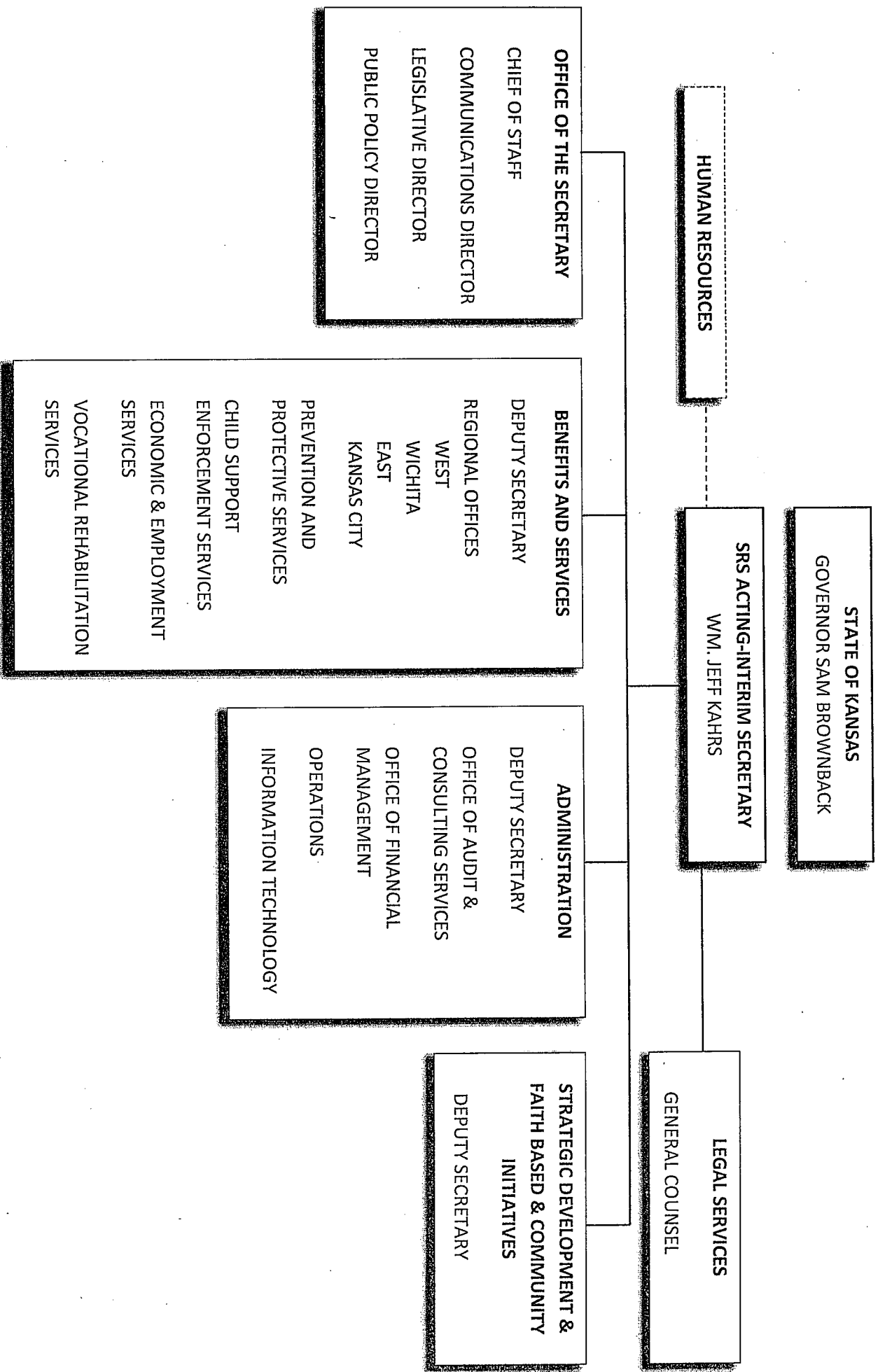




Agency Re-organization

January 17, 2012

KANSAS DEPARTMENT FOR CHILDREN AND FAMILIES



BUDGET COMPARISON

Department of Social and Rehabilitation Services

FY 2012 SRS budget \$1,729,494,259

FY 2012 SRS FTEs 5,454

Department for Children and Families

FY 2013 DCF budget \$611,920,188

FY 2013 DCF FTEs 3,012