



# **SENATE COMMITTEE ON TRANSPORTATION**

**February 2, 2012**

# KDOT Mission

The Kansas Department of Transportation (KDOT) mission is to provide a multi-modal transportation system that serves the mobility needs of Kansans and positively contributes to economic growth of the state.

**Transportation is about moving people and goods:**

It's also about...

enhancing **safety**

supporting **the economy**

creating **jobs**

# Transportation Moves People and the Kansas Economy



10,000 miles of state highways

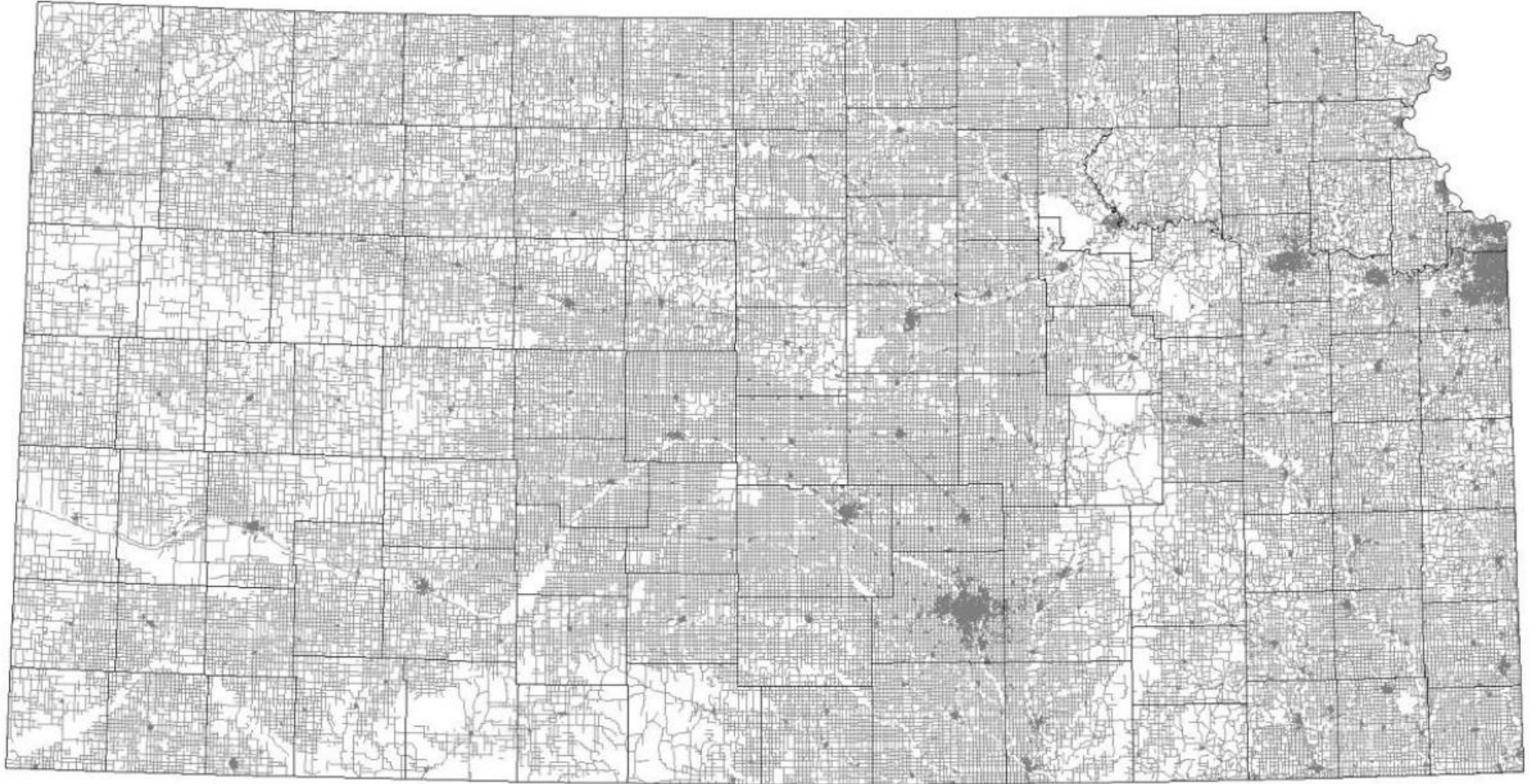
29.8 billion Vehicle Miles  
Traveled

2 million+ registered vehicles

Nearly 2 million licensed drivers

\$160 billion+ of goods shipped  
to, from and within Kansas  
each year

# **The Kansas Highway System: 140,000 miles of local roads & 25,000 bridges**




# **KDOT Programs**

# 30 Years of Transportation

- Comprehensive Highway Program (CHP)
  - 1989-1997
  - Focused on preservation
  - First time state funded transit
- Comprehensive Transportation Program (CTP)
  - 2000-2009
  - Focused on expansion
  - First time state funded aviation and rail
- **T-Works**
  - **2010-2020**
  - **Focus on maintaining the system**
  - **Economic Development**



# How they were funded

	CHP	CTP as passed	CTP adjusted	
MFT	7¢ phased	4¢ phased	6¢ phased	
Sales Tax:				
--Direct	.25¢	--	.45¢	.4¢
Deposit	10%→6%	12%	increase	increase
--Transfer			0%	
Reg. Fees				
--cars	50%	None	\$5 per	None
--trucks	increase	None	\$2-10 per	\$100 in
	35%			heavy
	increase			trucks
Bonds	\$890 M	\$995 M	\$1.272 B	\$1.7 B



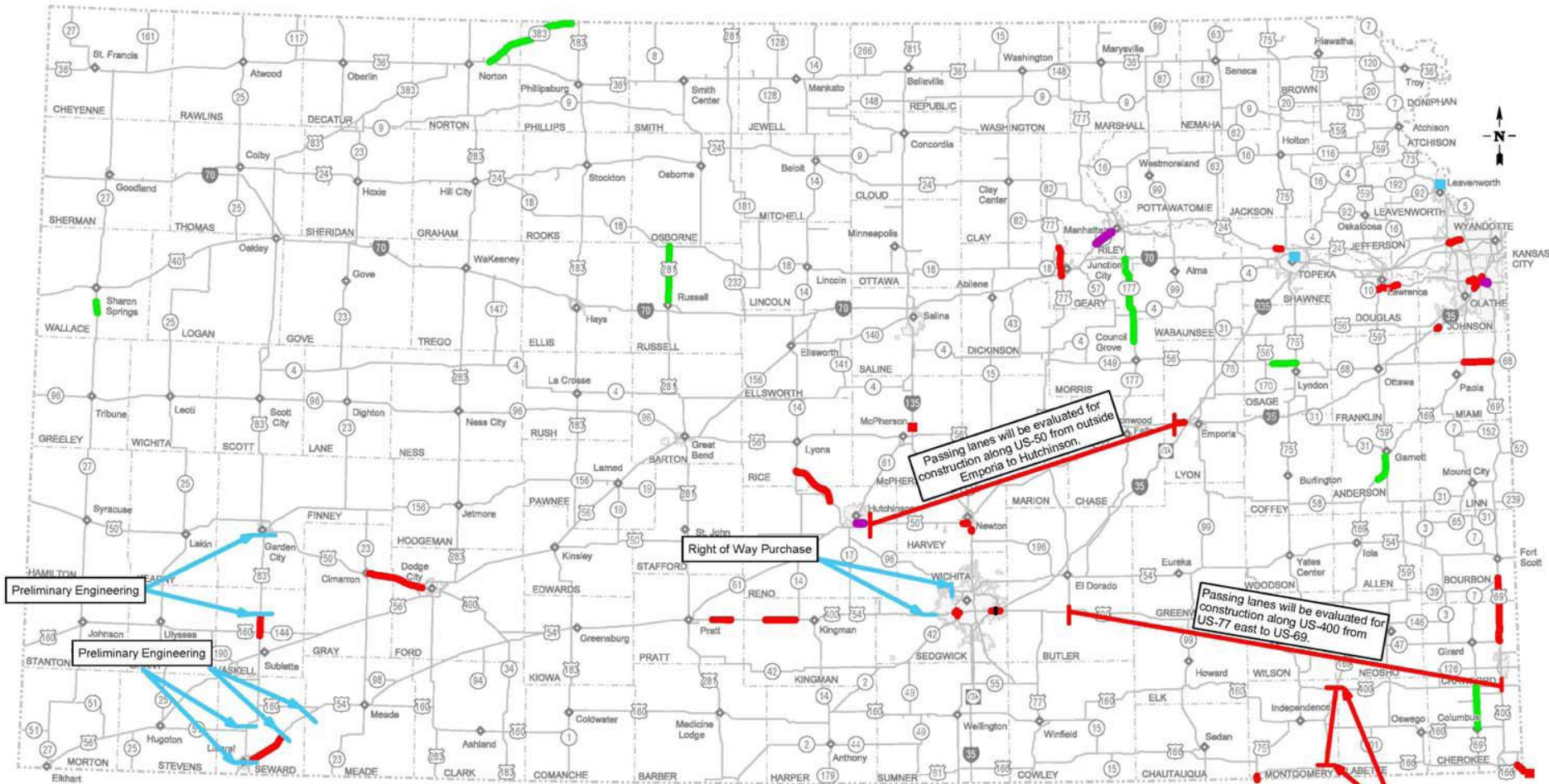


	(\$millions)
Preservation	\$4.2B
Mod/Expansion	\$1.8 B
Transit	\$100
Aviation	\$46
Rail	\$40
SCCHF	\$1.6 B
<b>Total Program</b>	<b>\$7.8</b>

# T-WORKS Projects Announced



- **37 expansion and modernization projects totaling \$1.8 billion announced**



Passing lanes will be evaluated for construction along US-50 from outside Emporia to Hutchinson.

Right of Way Purchase

Passing lanes will be evaluated for construction along US-400 from US-77 east to US-69.

Safety improvements will be evaluated for construction along US-169 from north of Coffeyville, north to US-400.



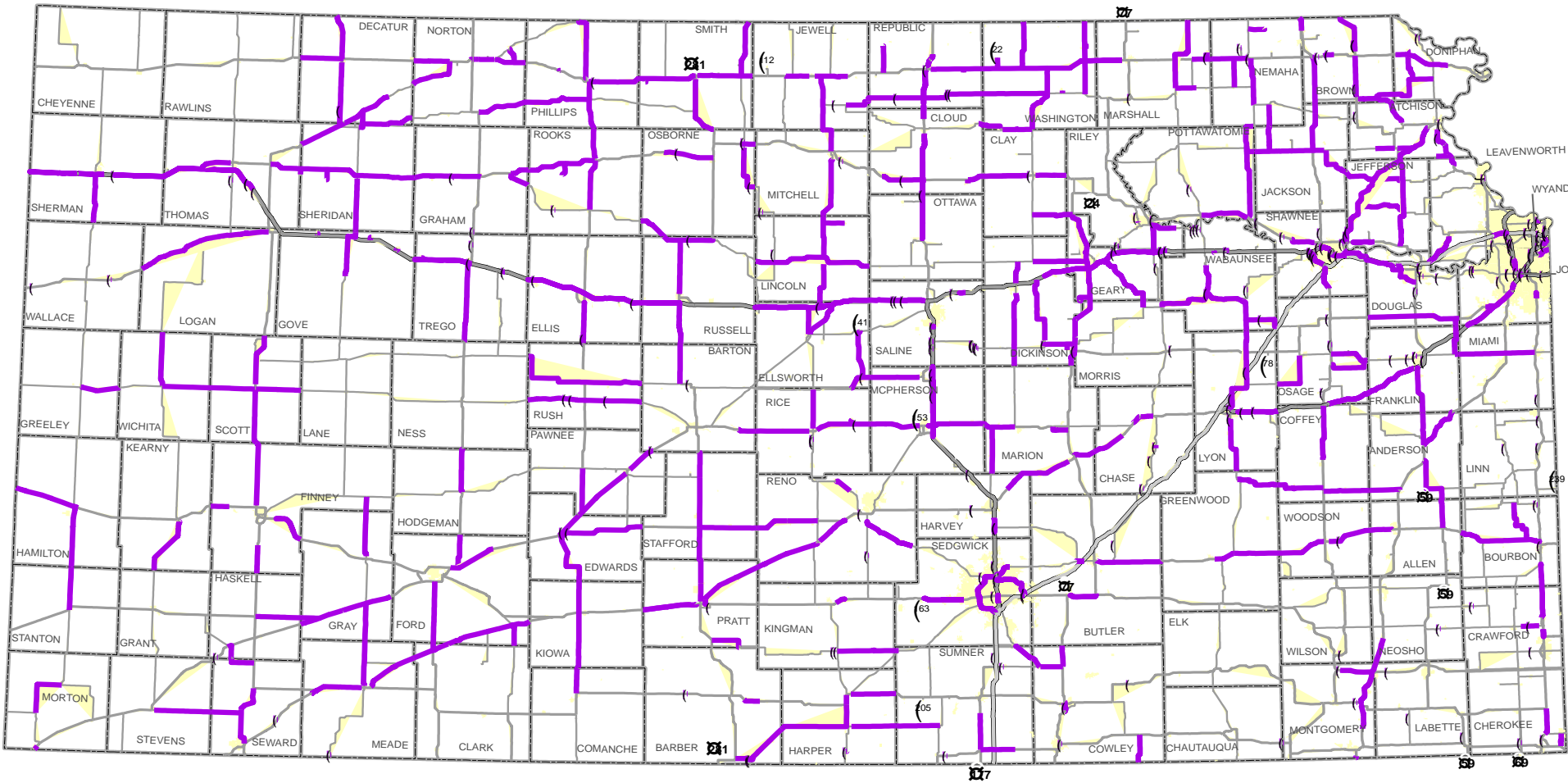
Map Prepared by  
 Kansas Department of Transportation  
 Bureau of Transportation Planning  
 Topeka, KS  
 May 2011

- █ Projects Announced in February 2011
- █ Modernization Projects
- █ Expansion Projects
- █ Preliminary Engineering or Right of Way Purchase

# Preservation Work

- T-WORKS designed to fully fund preservation
- October 2011, \$626 million in Preservation
- Recently announced the acceleration of \$50 million worth of preservation work to take advantage of low bid prices and to generate more jobs across the state

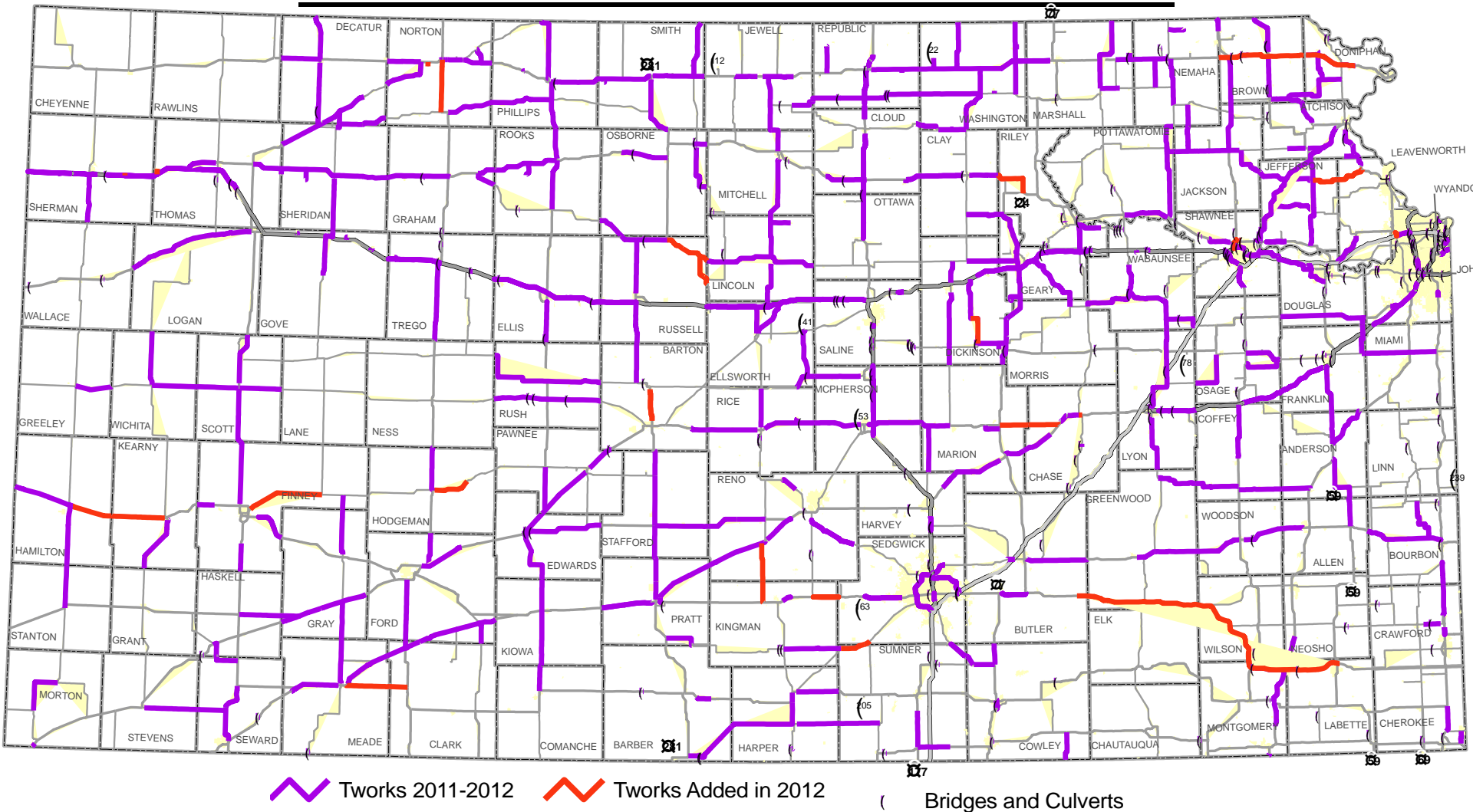
# Original TWorks Preservation Projects in Fiscal Years 2011-2012



 Tworks 2011-2012     Bridges and Culverts



# TWorks Preservation Projects in Fiscal Years 2011-2012



# More info about projects at [www.ksdot.org/tworks](http://www.ksdot.org/tworks)

TRANSPORTATION WORKS FOR KANSAS Jobs Safety Economic Development

# TWORKS

ABOUT INVESTMENTS PROJECTS \$8M PROMISE LOCAL PROGRAMS NEWS CONTACT

Welcome Project Search Construction

Welcome to the Transportation Works for Kansas (T-WORKS) website. T-WORKS is a 10-year, \$8 billion transportation program designed to create jobs, preserve highway infrastructure, and provide multimodal economic development opportunities across the state. The Kansas Department of Transportation is responsible for the delivery of T-WORKS. However, one of the important changes under T-WORKS is that Kansans have more input in the decision-making process than ever before. Thus, the success of this program will largely depend on how well we can all work together. And in the spirit of working together, we've launched this site as way to provide you the most up-to-date information on T-WORKS.

[READ ON about what I can find here](#)

## A short tutorial of the T-Works website

January 23rd, 2012

Check out our tutorial on the operation of this website! The video explains the most efficient way to access the wealth of information available here, including how to track all spending associated with the program.



**A short tutorial of the T-Works website.**

## T-WORKS News

### Related Links

[Performance Measurements Website](#)

### KDOT News Releases

[KDOT Traffic Information System Updates Wichita Drivers](#)  
December 15, 2011

[Property Acquisition Steps to Begin on SLT Project](#)  
November 21, 2011

[KDOT announces two-year schedule of projects](#)  
October 6, 2011

[2012-2013 highway projects](#)  
October 6, 2011

[U.S. 50 project kicks off](#)  
August 22, 2011

[Governor announces North East Kansas Projects](#)  
June 3, 2011

[Governor announces Western Kansas Projects](#)  
June 2, 2011

[view all >](#)

### KDOT Blogs

[U.S. 50 in Reno County to receive](#)

# 2011 Program Updates

Implementation Update

## **Economic Development Set-Aside Program Update**



# 2011 Economic Development Update

- \$10 Million per year
- Funding originally scheduled to start in 2013 but was accelerated to begin in 2011
- Economic Development Advisory Panel
  - Secretary of Transportation
  - Secretary of Commerce
  - State Transportation Engineer
  - Kent Glasscock
  - Tim Witsman
- 45-day response to Application

# 2011 Economic Development Update

## Approved & Committed Projects

<b>Business</b>	<b>Location</b>	<b>KDOT Investment</b>	<b>Jobs</b>	<b>Capital Investment</b>
MARS	Topeka	\$4,100,000	425	\$160 Million
McCarty Dairy	Thomas County	\$328,000	42	\$18 Million
CAT Worktools	Wamego	\$750,000	120	\$37 Million
Berry Plastics	Douglas County	\$300,000	11	\$19 Million
Tindall/New Millenium	Newton	\$1,700,000	860	\$88 Million

# 2011 Program Updates

Implementation Update

## **Bus on Shoulder Program**

# KDOT funding

## State

- Preserving T-WORKS revenue critical



## Federal proposals

### Senate version

- 2 year bill
- Maintains current funding levels

### House version

- New 5-year bill being crafted
- Maintains current funding levels

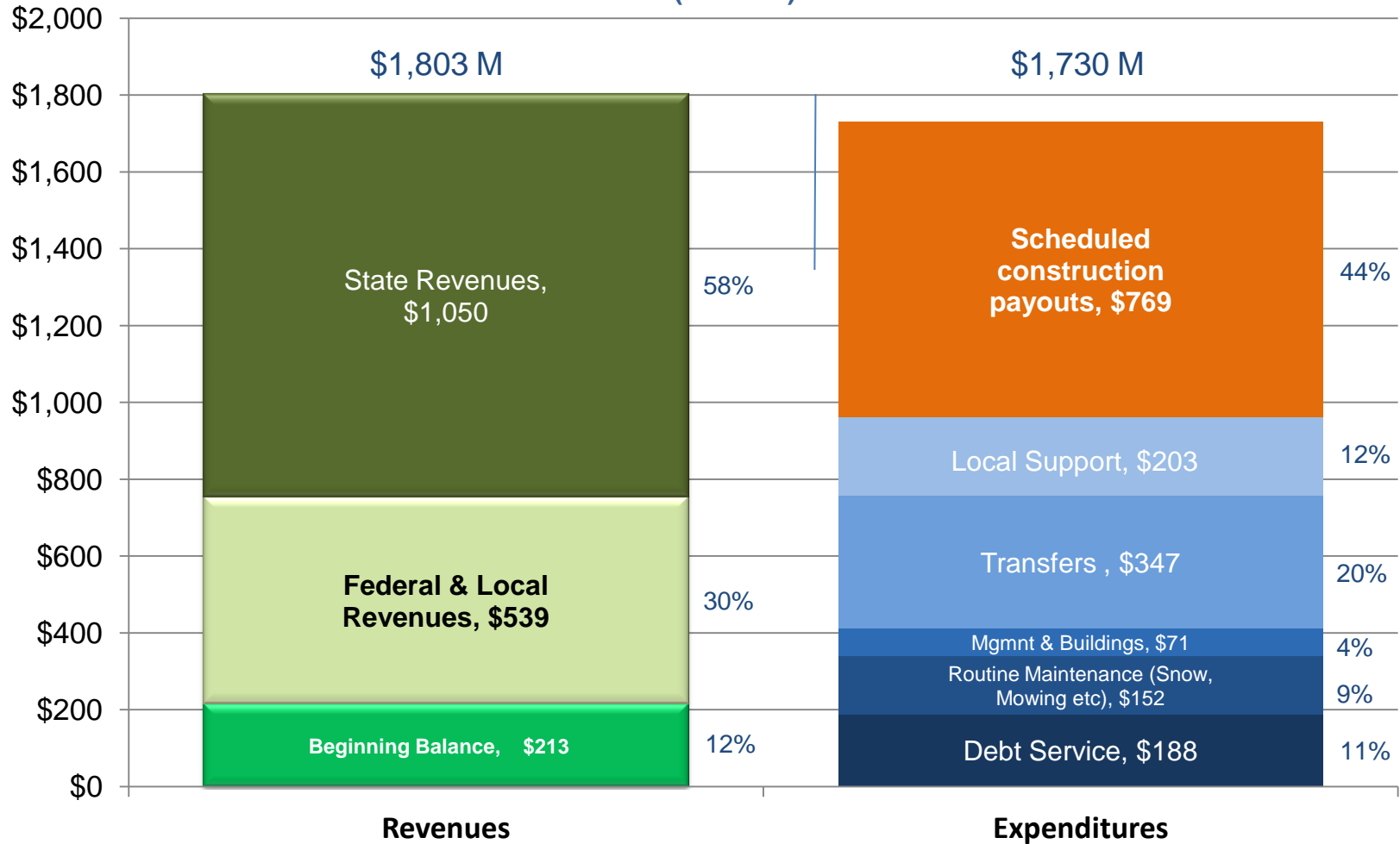


# Economic impacts: 5 Case Studies

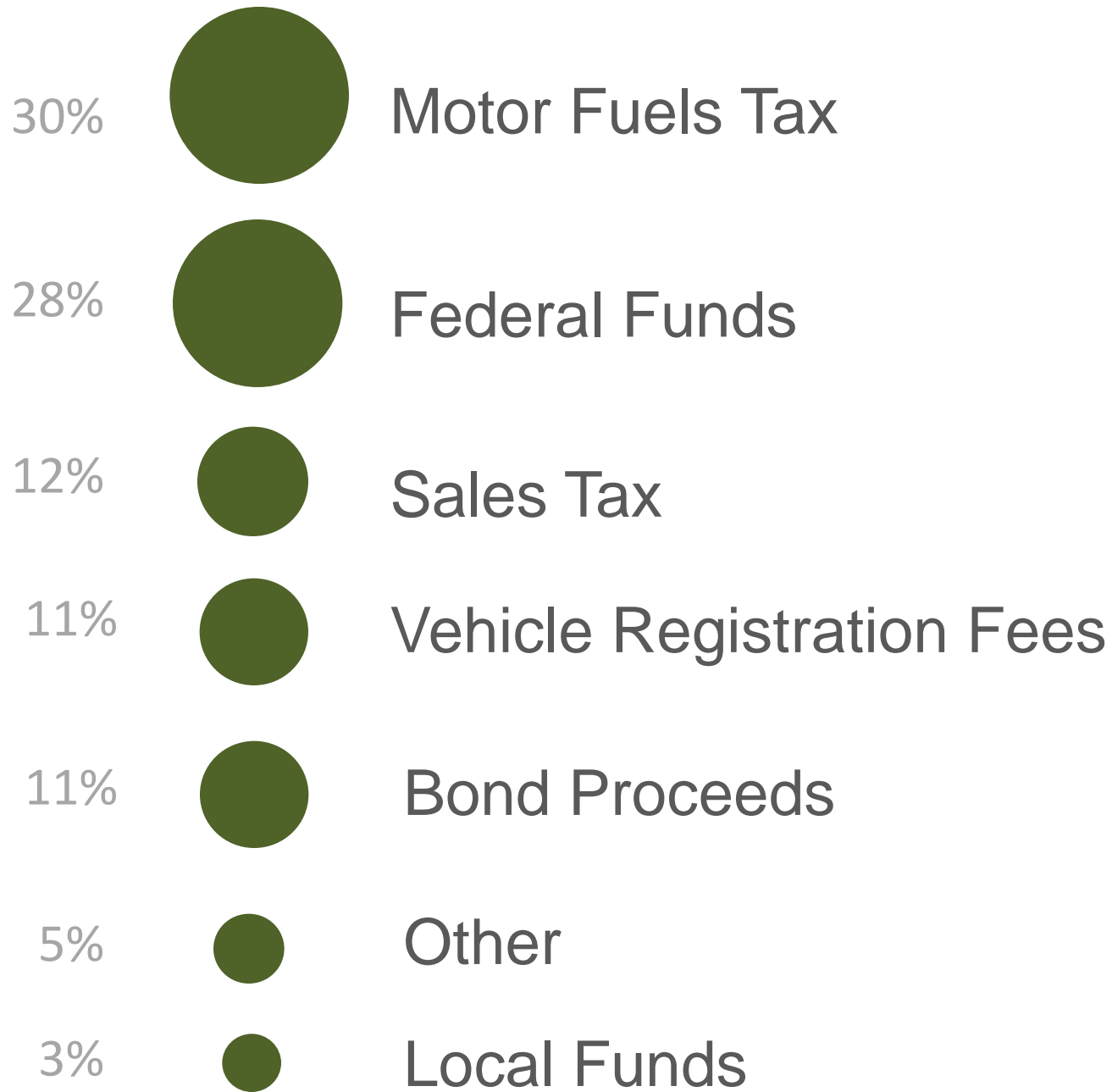
<b>Project</b>	<b>Project Cost</b>	<b>Jobs Added</b>	<b>Economic Value Added</b>
Parsons - US-400 Bypass	\$27 M	1,400	\$56 M
Wichita - K-96 Bypass	\$103 M	24,000	\$1.6 B
WY County –110 <sup>th</sup> St Interchange	\$50 M	5,700	\$186 M
Overland Park – Nall Ave Interchange	\$48 M	17,500	\$4.1 B
Hays – Commerce Pkwy Interchange	\$3.5 M	2,200	\$111 M
<b>TOTAL</b>	<b>\$231 M</b>	<b>50,800</b>	<b>\$6.1 B</b>

# Revenues and Expenditures

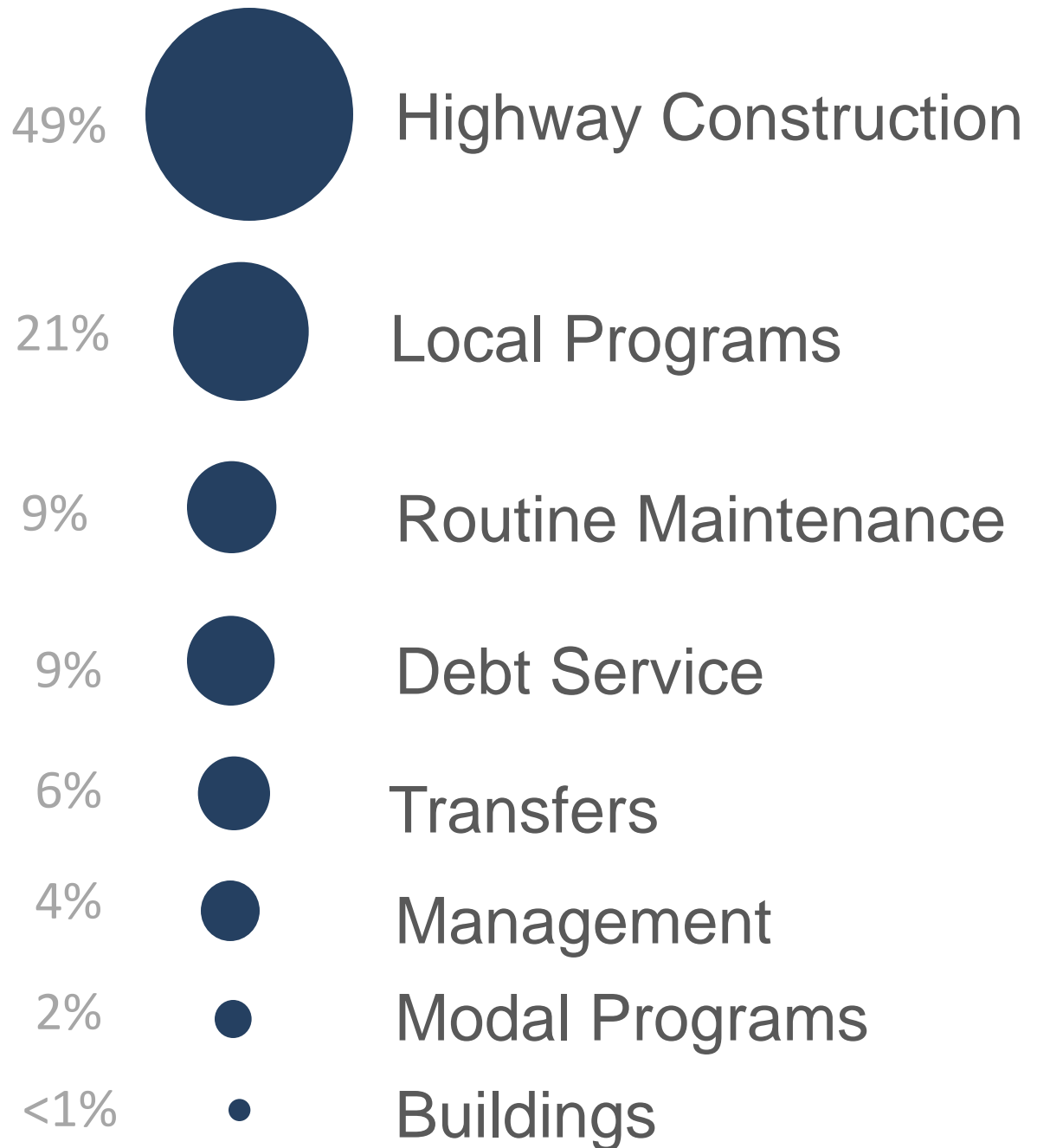
FY 2012 State Highway Fund Revenues and Expenditures  
(millions)



**State  
Highway  
Fund  
SOURCES  
'00-'09**



**State  
Highway  
Fund  
EXPENDITURES  
'00-'09**





**KDOT Today**

# **KDOT's Resources Strategically Deployed**

**2,727 employees**

**2,100 employees in 6 districts / 26 areas**

Road maintenance and construction  
inspection

**600 employees at headquarters**

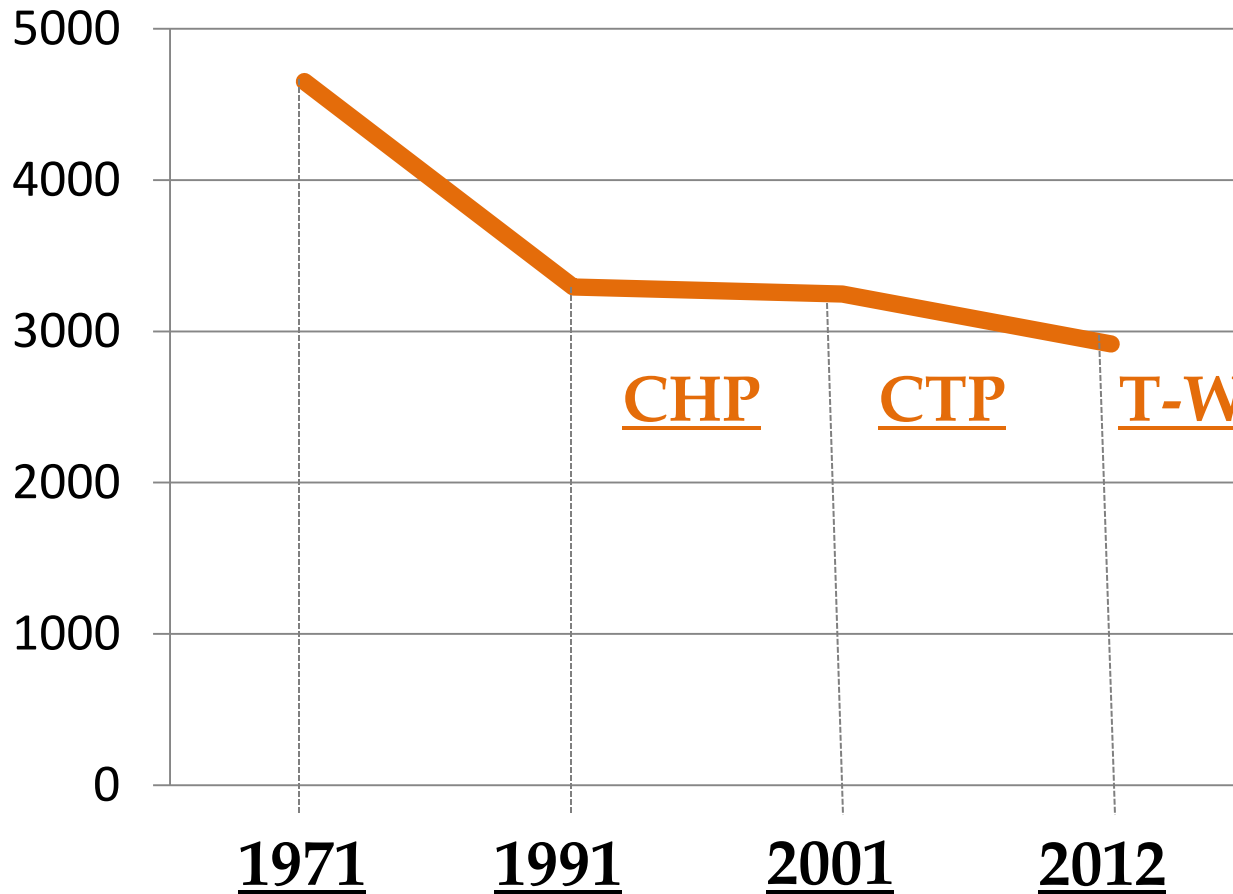
Planning and local projects

Road and bridge design

Aviation, rail, and transit services

Signs, access, and speed limits

# KDOT Workforce



- No positions added for T-WORKS
- Gave back CHP & CTP positions

# Questions?



# *Kansas Department of Transportation*

Eisenhower State Office Building ♦ 700 SW Harrison Street ♦ Topeka, Kansas ♦ 66603

## LEGISLATIVE CONTACTS

### Acting Secretary of Transportation



**Barb Rankin**  
(785) 296-3285  
rankin@ksdot.org

### State Transportation Engineer



**Jerry Younger**  
(785) 296-3285  
jerome@ksdot.org



### Chief, Office of The Budget



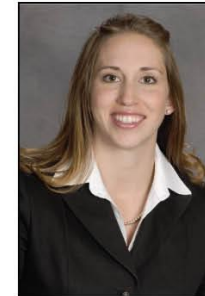
**Ben Cleeves**  
(785) 296-3597  
cleeves@ksdot.org

### Legislative Liaison



**Tara Mays**  
(785) 296-3597  
taram@ksdot.org

### Chief, Office of Governmental Affairs



**Lindsey Douglas**  
(785) 296-3597  
ldouglas@ksdot.org