

Sean Toole

Kansas
Eligibility Enforcement
System (KEES)

**Kansas Eligibility Enforcement System
(KEES) Update for JCIT**

Accenture

12-18-12

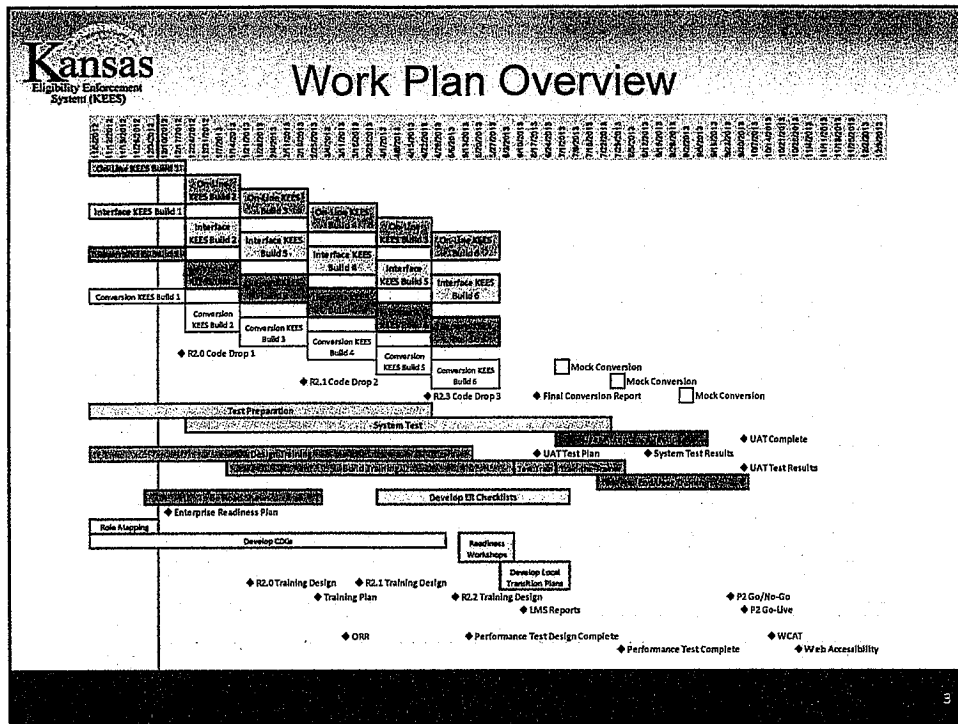
1

Kansas
Eligibility Enforcement
System (KEES)

Approach Improvements

- Focus on October Implementation
 - Continued progress to better align the project to the most important objectives and deadlines
 - Creative approaches to simplify the project
- Shift to more incremental development
 - Demonstrate progress earlier
 - Put a plan in place for design changes through code drops
 - Reduce risk by providing access to the State earlier in process
- Scope certainty
 - Close out any change requests and then prioritize timing
 - Monitor testing closely to avoid increasing scope unnecessarily during development

2



- ## Progress
- Design Completion – On target, with a plan to accommodate approved Change Requests
 - Build – Behind schedule roughly 10% overall, corrective actions developed
 - Automated Rules – On target
 - Interfaces – Corrective Action Plan on schedule. Close monitoring of some interfaces including Medicaid and Social Security
 - Conversion – On Target
 - Testing – Slightly behind due to resource contention
 - Implementation – On Target
 - Training – On Target
 - Reporting – On Target



Project Management

- Transparency and cooperation
 - Detailed status reporting by team and task
 - Managing to critical path tasks and 'earned value' for each project team
 - Moving to a very detailed view of build activities
 - Twice a week escalation meetings to resolve any scope or design issues
 - Governance is operational
- Adjusting staffing to continue to meet milestones
 - Adding resources to manage to the October schedule

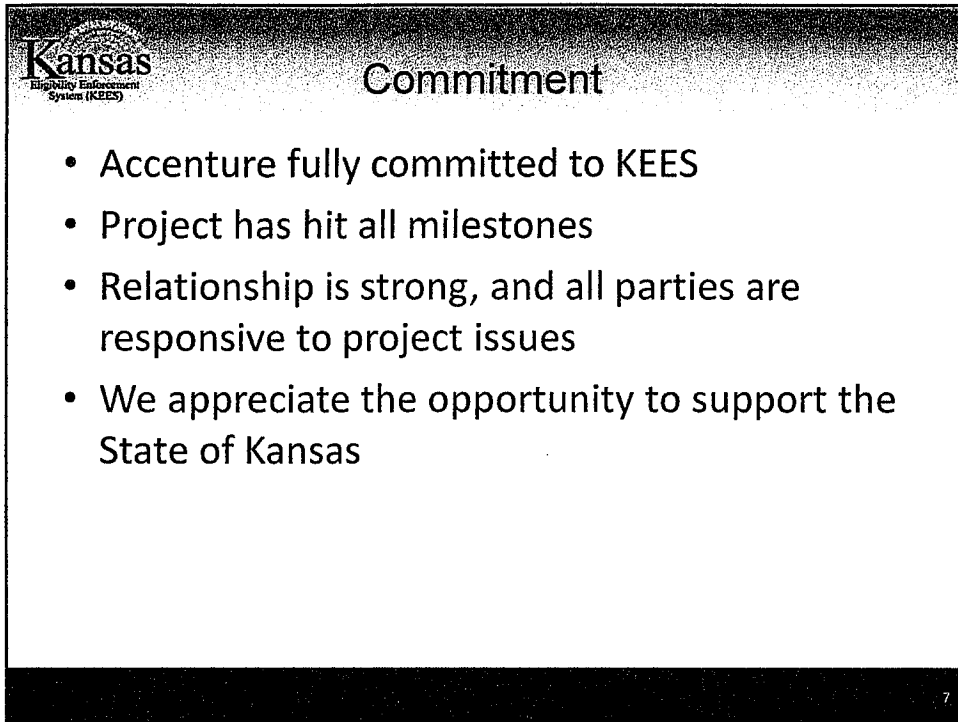
5



Delivery Risk Management

- Aggressive Schedule Risk Actions
 - Contingency planning and functionality prioritization for October 2013 release
 - Decide now what is critical to accommodate schedule
 - Monitor Build capacity
 - Utilize Design escalation process to confirm appropriate scope
 - Corrective Action Plan on Interfaces helping to reduce delivery risk

6



Kansas
Highways Enforcement
System (KEES)

Commitment

- Accenture fully committed to KEES
- Project has hit all milestones
- Relationship is strong, and all parties are responsive to project issues
- We appreciate the opportunity to support the State of Kansas

7