

TESTIMONY FOR JOINT COMMITTEE ON ARTS AND CULTURAL RESOURCES
SANDRA KAY HARTLEY
VICE-PRESIDENT, KANSAS ARTS FOUNDATION
September 25, 2012

Good morning, Madame Chairman and members of the Committee. My name is Sandra Hartley. I am the newly elected Vice President of the Kansas Arts Foundation and I welcome this opportunity to present information to the Committee on behalf of the Foundation. In addition to my printed remarks, I have provided the Committee with a set of folders which were used in conjunction with a recent Foundation event in Lenexa, Kansas. **The contents of these folders evidence the developing connections** between the Kansas Arts Foundation, local arts organizations and Kansas artists. I am also hopeful that all of you will find the donation form and envelop in your folder and put them to good use.

The Kansas Arts Foundation is a 501(c) (3) private charitable organization created in February of 2011 and is solely funded by private donations. After its creation, many -- in and out of the legislature-- asked "Will private support and volunteerism really work in Kansas?" This fearful concern was vigorously repeated in 2011 and 2012. Yet, the Foundation sees abundant evidence that local arts organizations through volunteer efforts have been emboldened since 2011 to strengthen local private support for their arts and cultural programs. **These local initiatives are directed - not from Washington, D.C. or Topeka. They are not funded by taxpayer dollars for the most part but by the hard work of Kansas volunteers and the generosity of Kansas donors.**

One example is the May 26, 2012 motorcycle gallery run in Dodge City which was a first as an arts fundraiser. This idea emerged from Dodge City's own historic connection with motorcycle racing. As a result, this event has engendered interest in local arts programs from an entirely new sector of potential arts supporters and plans for next year's event are already underway. For more of these examples, we can look to Marysville, McPherson, Liberal, Iola, Paola and Salina. All these places provide evidence of the vitality and imagination of private support, local initiative and volunteerism in Kansas.

To this extraordinary mix, the Kansas Arts Foundation adds the power of a statewide endowment program run by a dedicated and talented board of directors with a mission to secure the future of Kansas arts and improve the commercial viability of Kansas artists while supporting local initiatives through a regional grant program.

In assessing the future, it is important to recognize that Kansas already has an existing network of local volunteer arts organizations and a wealth of talented visual and performing artists across the entire State not just in Johnson County, Lawrence and Wichita. These extraordinary resources did not vanish when National Endowment for the Arts chose to disqualify Kansas from participating in its state partnership program using private funds. The Foundation is dedicated to establishing collaborative relationships with this vibrant set of "can do" folks who are the backbone of arts and cultural programs. Through statewide fund raising and launching new initiatives supporting the commercial viability of Kansas artist, the Foundation seeks to engage new donors and expand support among Kansans.

For example, in 2012, the Foundation conducted its first photographic competition for Kansas photographers designed to raise awareness of the Foundation and support the commercial success of the participating photographers. Details are available in the folder. Recently the Foundation adopted an Artist in Residence program which KAF Director Robert Swain will be discussing with you. Of particular excitement is the adoption of a at our last Board meeting Creative Connections Program. This program will provide professional mentoring of videographer students in Kansas colleges by pairing them with Kansas artists for the purpose of creating web videos promoting and marketing individual artists and their work. There are no

costs to the students or the artists and the professional videographers serving as mentors donate their services and equipment. These videos which will be owned by the artists will also be available on the Kansas Arts Foundation web site: www.kansasartsfoundation.com

Since its inception, the Foundation has held events in Topeka, Manhattan, Wichita and Lenexa. The next two events are scheduled for Liberal and Marysville. In February, the Foundation Board will have a two day strategic planning retreat. Formal gift policies and the official grant program of the Foundation can be accessed on the web site. In addition we have office space in Topeka, a monitored web site, and responsible monetary management from the Trust Company of Manhattan.

We are unencumbered by debt or operating expenses and have no paid staff. The recent suggestion that the Foundation has "expenses" which have prevented KAF from making grants is totally baseless. Less than 10% of donated money has been spent on operations and events. We are growing a permanent endowment fund with the intention of being a unique, forward looking foundation. We are already a well operated private endowment.

In addition to working with artists, local arts organizations and private donors; **the Foundation has openly endorsed the establishment of public-private partnerships** to stimulate Kansas arts efforts and reduce the burden of transitioning from a taxpayer funded model to private funding. The Foundation responded to the needs of the former Kansas Arts Commission when the Commission decided to sell arts license plates as a way of generating private funds for Commission programs. Without imposing some burdensome or lengthy application processes on the Commission, we pledged \$20,000 to assist with implementation of the license plate program. A fact notably overlooked in a recent newspaper column asserting that no "decent sized grants" have been made by the Foundation. **In addition, using in-kind donations, we provided free office space including included paid utilities and equipment worth thousands of dollars to the former Arts Commission which was used from July 1, 2011 until June 30, 2012.** KAF support allowed the Commission to continue to function and preserved valuable Commission assets. This type of flexible, responsive funding is the hallmark of private action which is not encumbered by federal grant regulations.

BUT KAF has always mindful that the growth of an endowment fund would require time and effort, the Foundation believes it is important to foster public private partnerships that assist in reducing the inevitable disruptions associated with transitioning to private funding. Acting together in the best interest of Kansas arts and cultural programs should be the core of all art's supporters -- public and private alike.

I began our discussion this morning with a folder which I called evidence that volunteerism works in Kansas. To those well meaning souls who sought me out after my presentation in March 2011 to the Senate committee holding hearings on the reorganization plan and their warning that volunteerism might work in education or in health care but not art. I have a question for them: **HOW DO YOU EXPLAIN ALL THIS?** How do you explain everything in the folder, all the events, new programs and the financial support of the Kansas Arts Commission without taxpayer funded overhead and staffing. If volunteerism won't work in Kansas, **HOW DO YOU EXPLAIN ALL THIS -- BUT the best news is we have only begun!**

In conclusion, I would like to quote with a little pride the statement of our President, Linda Browning Weis, who has provided and continues to provide relentless leadership of the Kansas Arts Foundation. When she spoke with the legislature last year, she accurately predicted: "We will do this right, well and in a spirit of harmony." To this we add our continued conviction that the future of stable funding for Kansas arts belongs to the bold initiative represented by the creation of the Kansas Arts Foundation and the establishment of a real endowment fund for Kansas arts. Thank you.

Vision Statement

To be a unique charitable foundation that secures private funds and empowers Kansas Arts communities and talent, while impacting, inspiring and sustaining the future of the Arts culture for generations of Kansans to come.



FOUNDATION
Securing the Future for Kansas Arts

Mission Statement

We are a distinct, forward-thinking foundation that endows and secures private funds for the sake of all Kansas Art communities, through the impact of innovative programs, education, grants and other services, now and into the future.



KANSAS

FOUNDATION
Securing the Future for Kansas Arts

For More Information Visit:

KansasArtsFoundation.com

Linda Browning

Weis

Manhattan, KS
Realty Executives Weis Real Estate



President

- Chairman of the Board of the Kansas Arts Commission
- Past Board Chair of Manhattan Chamber of Commerce
- Bachelor's degree in performing arts and music education from the University of Kansas.
- Master's degree in music is from the University of Denver.
- Ph.D. coursework in choral conducting was from the Eastman School of Music, Rochester, New York.
- Music Educator and owned a private music school for 13 years.
- Real Estate Company Broker-Owner
- Patron of the Symphony in the Flint Hills
- Governing Board of the Marianna Kistler Beach Museum of Art
- Advisory Board to the KSU Department of Music



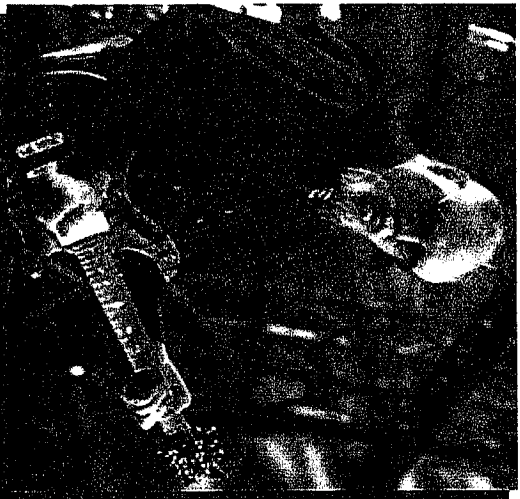
KANSAS

FOUNDATION
Securing the Future for Kansas Arts

For More Information Visit:
KansasArtsFoundation.com

Kerry Livgren

Berryton, KS
Professional Musician



Vice President

- Founding member of the group, "Kansas"
- Primary song writer, lead guitarist and keyboard player.
- Penned such hits as "Carry On Wayward Son" and "Dust in the Wind"
- Numerous gold and multi-platinum albums
- Over 14 million recordings sold to date
- Owner of Grandzine Studios and Numavox Records



FOUNDATION
Securing the Future for Kansas Arts

For More Information Visit:
KansasArtsFoundation.com

Virginia Crossland Macha
Iola, KS
Engineer



Secretary

- A certified engineer, Virginia grew up in a musical family.
- Duke Wellington, her famous grandfather, wrote the authoritative text on Hollywood set design.
- Serves on Board of Directors, Bowlus Fine Arts Center, Iola
- Serves on the State Fair Board of Directors
- Goal is to provide Arts exposure for all Kansas and innovative funding to support Arts programs



FOUNDATION
Securing the Future for Kansas Arts

For More Information Visit:
KansasArtsFoundation.com

Mark Knackendoffel

Manhattan, KS
President and CEO
The Trust Company of Manhattan



Treasurer

- Co-founder of The Trust Company of Manhattan
- Bachelor's in Public Administration and Economics from Emporia State
- MBA and J.D. from the University of Kansas
- Member of the Riley County and Kansas Bar Associations



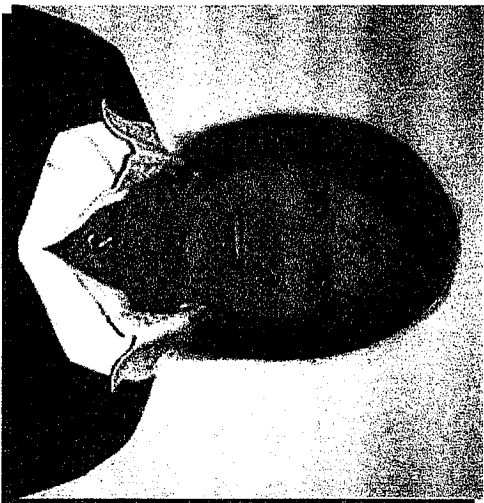
FOUNDATION
Securing the Future for Kansas Arts

For More Information Visit:
KansasArtsFoundation.com

Sandra K.

Hartley

Paola, KS
Attorney



Executive Committee

- Incorporator of USD 368 Endowment Association
- Miami County Medical Center Endowment Association
- Miami County Arts Coalition
- Former Assistant Director to the Institute of Public Affairs at the University of Kansas
- Former prosecutor in the Johnson County



KANSAS

FOUNDATION
Securing the Future for Kansas Arts

For More Information Visit:
KansasArtsFoundation.com

Bruce

Breckenridge

Leawood, KS
Managing Partner
Valent Aerostructures, LLC

Director

- Development Chair of the Symphony in the Flint Hills
- Kansas City-based aerospace supplier with 7 locations (4 in Kansas)
- Has served as Development Chair, Board of Directors, Symphony in the Flint Hills since inception
- Lives in Leawood, but spends time with wife and four daughters on their ranch in the Flint Hills near Alma
- World business traveler



KANSAS

FOUNDATION
Securing the Future for Kansas Arts

For More Information Visit:
KansasArtsFoundation.com

Betti O.

Manhattan, KS
Professional Musician



Director

- Outstanding winning performer on "Showtime at the Apollo"
- Has performed for: Hilary Clinton, Colin Powell, Maxine Waters, Al Gore, the Kansas City Royals, the Winter Olympics, Tom Watson, ESPN Sprint Cup, Country Stampede, an Oklahoma City Bombing Fundraiser, and the Power Symphony



FOUNDATION
Securing the Future for Kansas Arts

For More Information Visit:
KansasArtsFoundation.com

Priscilla

O'Shaughnessy

Wichita, KS
Professional Volunteer



Director

- Wichita Center for the Arts Board Member
- Wichita Art Museum, Murdoch Society
- Young Presidents' Organization



KANSAS

FOUNDATION
Securing the Future for Kansas Arts

For More Information Visit:
KansasArtsFoundation.com

Paula Landoll-Smith

Marysville, KS
Marketing Director



Director

- Active in the KARL Program
- Serves on the Marysville Main Street Board of Directors, St. Gregory's Catholic Church Building Committee
- Founding Board Member of Leadership Marshall County
- Past president of the Marysville Chamber of Commerce, the St. Gregory's PTO and of the Altar Society
- Past participant of Leadership Kansas



FOUNDATION
Securing the Future for Kansas Arts

For More Information Visit:
KansasArtsFoundation.com

Nathan

McCaffrey

**Liberal, KS
Attorney**



Director

- Past President - Baker Arts Center Board of Directors
- Juris Doctor degree from Washburn University
- B.S. University of Kansas
- Board Member of Liberal Bee Jays,
2010 National Baseball Congress World Series Champs



FOUNDATION
Securing the Future for Kansas Arts

For More Information Visit:
KansasArtsFoundation.com

Sue Schlapp

Wichita, KS
Kansas Department of Commerce



Director

- Former Councilwoman, Wichita City Council
- Wichita Arts Council
- USD 259 Emergency Services Board
- Honorary Commander at McConnell Air Base



FOUNDATION
Securing the Future for Kansas Arts

For More Information Visit:
KansasArtsFoundation.com

Robert (Bob)

Swain

Topoka, KS

Owner Beauchamp's Gallery

Director

- University of Kansas, BFA Degree in Painting
- The Friends of the Mulvane Art Museum
- Doorstep of Topoka
- Catholic Fine Arts Council for the Archdiocese of Northeast Kansas

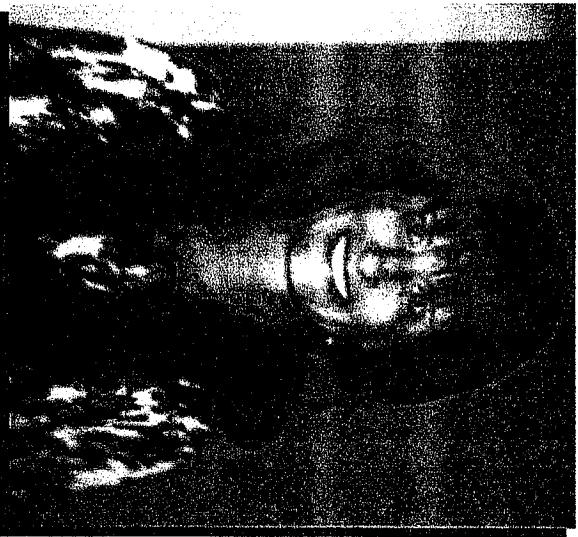


FOUNDATION
Securing the Future for Kansas Arts

For More Information Visit:
KansasArtsFoundation.com

Heidi Surber Teichgraber

Eureka, KS
Butler County Community College



Director

- Kansas State University, BS in Music Education
- Stage One Productions
- Kansas State University Choir Advisory Council
- MENC and KMEA



KANSAS

FOUNDATION
Securing the Future for Kansas Arts

For More Information Visit:
KansasArtsFoundation.com

Becky White

Levant, KS
Community Philanthropist

Director

- Art Collector
- Extensive art collection from having lived in Santa Fe
- Was formerly associated with Cowboy Hall of Fame in Oklahoma City
- Background in commercial real estate sales
- She and her architect husband Larry live in both Levant (west of Colby) and Kansas City
- Leadership Kansas Class of '99
- Active member of PEO



KANSAS

FOUNDATION
Securing the Future for Kansas Arts

For More Information Visit:
KansasArtsFoundation.com

Darci Winter

Dodge City, KS

Winter Livestock Auction Co.

Director

- Busy mother of four young children
- President, Dodge City Area Arts Council
- Fundraising Committee, "Celebrate the Seasons", a Dodge City arts event
- Active community volunteer and sponsor of numerous civic events
- Works actively in their livestock auction business



KANSAS

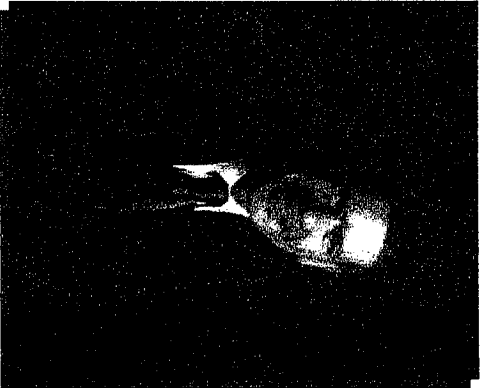
FOUNDATION
Securing the Future for Kansas Arts

For More Information Visit:
KansasArtsFoundation.com

Christopher F.

Burger

Lawrence, KS
Stevens & Brand L.L.P.



Legal Counsel

- University of Kansas (B.A. 1991, J.D. 1993)
- Lawrence Public Library Board of Trustees
- KBA Construction Law Section
- Lawrence Public Library Foundation
- Downtown Lawrence Inc.



FOUNDATION
Securing the Future for Kansas Arts



FOUNDATION
Securing the Future for Kansas Arts

MESSAGE FROM THE PRESIDENT

Welcome to Cottonwood Canyon

We appreciate your presence this evening. We are gathered here as a volunteer organization of supporters of the Arts, many of us dedicated to private enterprise in support of Kansas Arts and its Artists. The goal of the Kansas Arts Foundation is to Secure the Future for the Arts in Kansas. We are committed to the nurturing of artistic creativity through the personal generosity of those whose support of the Arts is of their own volition through private funding.

Art is very personal. Art is a reflection of the human spirit. Thus, it is appropriate that Arts support should emanate from the heart—that we should want our contribution to make a difference in the lives of others—that we should want the Arts to improve the quality of life for our neighbors, ourselves, and communities across the State for generations to come.

The Vision of the Kansas Arts Foundation is simple. *We seek a secure future for the funding of Kansas Arts through the endowment of private funds.* The Kansas Arts Foundation is leading the way in initiating personal responsibility to create much-needed change that will benefit all Kansans. We are working to establish a permanent endowment to fund Arts across the State.

Times have changed. The Kansas Arts Foundation is ahead of that Change. The Kansas Arts Foundation is leading the way, and we invite your participation--and that of your family, friends and neighbors. We invite the support of all those who love Kansas and who desire to be a pioneer in establishing new traditions of Statewide funding for our Kansas Arts and Artists.

The Kansas Arts Foundation is a young organization that has made remarkably steady progress in the few months since we were created. Starting at 0, with absolutely no funding, no staff, no supplies, or equipment, postage, website, technology, or administration, the Kansas Arts Foundation has proven to be a success symbol of Statewide Volunteer Spirit in Action!

Hundreds of contributors and thousands of hours of volunteer effort have made our progress possible. Our numbers are growing, and we have only just begun! We appreciate your presence tonight, and we hope that you will continue to share in our mission for private funding of the Arts. *We invite you, your family, friends and neighbors to join us in building a permanent endowment that is worthy of Kansas Arts and Artists for all generations.* Together, we will build a Secure Financial Future for Kansas Arts. We will build a better tomorrow today. The winners will be Kansans of Present and Future Generations! *Ad Astra per Aspera!*

LINDA BROWNING WEIS, PRESIDENT
July 20, 2012



KANSAS Arts FOUNDATION
 Securing the Future for Kansas Arts

DONOR CONTRIBUTION FORM

The Kansas Arts Foundation serves as a non-profit, charitable organization committed to the enhancement of the Arts in Kansas through private philanthropy. The Foundation greatly appreciates your contribution in support of the Arts in Kansas and the Foundation's Mission to develop and grow Arts initiatives through private philanthropy.

The Kansas Arts Foundation has been approved by the I.R.S. as a §501(c)(3) public charity - Federal EIN 27-5280535.

DONOR(S) _____

Address _____

_____ Zip _____

Phone: (____) _____ E-Mail: _____

Donors may be acknowledged in the Kansas Arts Foundation publications, such as our Annual Report. Please indicate your permission for us to use your name in this manner, and also how you would like to be listed.

Preferred Donor Recognition: _____

_____ Please initial if you prefer to have your gift remain anonymous and not publicly acknowledged.

Date of Contribution ____/____/____ Value of Contribution \$ _____

Form of Contribution _____ Check Enclosed - Please remit to:

Kansas Arts Foundation, Inc.
The Trust Company of Manhattan, Custodian
800 Poyntz Avenue • P.O. Box 1806
Manhattan, KS 66505-1806

- _____ Securities – Please contact Custodian for Transfer Instructions
- _____ Other Assets – Please contact Custodian for Transfer Instructions
- _____ Other Contribution: _____
- _____ Pledge – Terms: _____
- _____ I am interested in discussing Planned/Deferred Giving Options

For further information regarding the Kansas Arts Foundation, please contact any of our Executive Committee members:

Linda Browning Weis - Manhattan	President	785.539.9333	lindaweis@RealtyExecutives.com
Kerry Livgren - Berryton	Vice-President	785.862.2514	belexes@aol.com
Virginia Crossland Macha - Iola	Secretary	620.365.8141	vcross@cox.net
Mark Knackendoffel - Manhattan	Treasurer / Custodian	800.285.7878	MarkK@TheTrustCo.com
Sandra Hartley - Paola	Member at Large	913.557.3828	sandrakayhartley@gmail.com
Robert Swain - Topeka	Development Coordinator	785.233.0300	beauchampsart@cox.net
Christopher F. Burger - Lawrence	Legal Counsel	785.856.6528	CBurger@stevensbrand.com

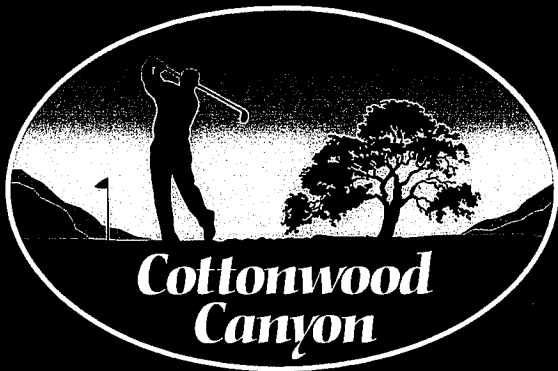
3-22

SUBMISSION REQUIREMENTS FOR THE KANSAS ARTS FOUNDATION

2012 PHOTOGRAPHIC COMPETITION

- **DEADLINE FOR ALL SUBMISSIONS: JULY 10, 2012**
- **ENTRY FEE: NONE**
- **ELIGIBILITY REQUIREMENTS FOR PHOTOGRAPHERS:**
Any Kansas resident or owner/operator of a business located in Kansas. Photographers must be age 16 yrs. or older.
(Note: Photographers under the age of 18 yrs. must have the signed consent of a legal guardian to participate in the competition)
- **REQUIREMENTS FOR PHOTOGRAPHIC SUBMISSIONS:**
Image specifications: The subject matter limited to images depicting Kansas golf courses and/or Kansas golfers.
Size limitations: Photographic submission may not be larger than 16" X 20". All submissions must be matted with a maximum matt size of 2 ½ ". Either landscape or portrait orientations are accepted. No framed submission will be accepted. The jury panel reserves the right to reject non compliant submissions.
Traditional photographic processes preferred but digitally enhanced photographs are eligible. No mixed media submissions will be accepted. Images may not be presented on canvas, metal, wood or other non-paper sources.
All submissions must be original, limited edition prints, signed by the photographer. Photographers will retain full copyrights to their submissions. All photographic entries will be exhibited by the Kansas Arts Foundation at its July 20, 2012 Cottonwood Canyon Friend Raiser Event. Photographers wishing to retain their submission must pick up their submissions no later than August 1, 2012; otherwise, the submission will be donated to Artists Helping the Homeless. Photographers are encouraged to participate in the silent auction. See below.
- **JURY PANEL:** Michael Wunsch of Outpost Worldwide of Lenexa, KS; Robert Swain, Owner Beauchamps Art Gallery in Topeka, KS; Mark Braswell of Strauss Peyton Photography, Overland Park, KS.
- **PRIZE:** The winning photographer will received \$1,000 in studio time and services provided by Outpost Worldwide in their Lenexa, Kansas studio and one round of golf for the winner's designated foursome at The Golf Club of Kansas. Winner to be announced by the Kansas Arts Foundation at a Friend Raiser Event the evening of July 20, 2012 at Cottonwood Canyon in Lenexa , Kansas. Winner will be requested to be present if possible. To view the studio and services of Outpost WorldWide, participants may visit the web site at: www.outpostworldwide.com/studio.
- **PLACE FOR SUBMISSION:** All submissions should be delivered to: 11237 Nall, Suite 100, Leawood, KS 66211 which is open to receive deliveries & mailed entries from 10-5 M-F between June 25th and July 1st. Photographers wishing to retain their submissions following the competition are required to pick them up from the same location between July 27 and August 1. See special invitation below.

Special Invitation to submitting photographers: Photographers are invited to donate their photographic submission to a charitable silent auction being held in conjunction with the Kansas Arts Foundation (KAF) Friend Raiser Event on July 20, 2012 at Cottonwood Canyon, Lenexa, KS. KAF will be hosting a silent auction of donated photographic submission. Fifty percent of the proceeds from the auctioned photograph will be paid to the submitting photographer and the other fifty percent retained by KAF as part of its effort to develop private support for Kansas arts and artists. Participation in the charitable silent auction is optional. Donating photographers will be invited to attend a special reception on July 20, 2012 at the Cottonwood Canyon Event.



AWARD-WINNING GOLF COURSE COMMUNITY!!!

- *Maintenance Provided
(No Mow- No Snow)*
- *125 Exclusive Private
Homesites*
- *Stunning Views: Water,
Golf and Natural Setting*



*Affordable
Semi-Private Golf*
(913) 888-4894



TheGolfClubOfKansas.com

"Best New Community" - Kansas City Homes & Garden Magazine

Homes From \$375 - 1 M +

Open Weekends 1pm-5pm • E-mail: CottonwoodCanyonKS@gmail.com

www.CottonwoodCanyon.info • (913) 492-4444



Directions: I-435 to 95th St., west on 95th St., which becomes Prairie Star Pkwy. Prairie Star Pkwy. to Ridgeview, north to community.

KANSAS ARTS FOUNDATION
2012 PHOTOGRAPHIC COMPETITION FOR
KANSAS PHOTOGRAPHERS

Kansas Photographers age 16 and older who are residents or operate a business in Kansas were invited to make photographic submissions depicting Kansas golf courses to a competition sponsored by the KANSAS ARTS FOUNDATION in conjunction with the Cottonwood Canyon Event. There were no entry fees. The winning submission received \$1000.00 in studio time and photographic services provided by Outpost Worldwide in their Lenexa studio and free rounds of golf from the Golf Course of Kansas. Be sure to see the winner.

Participating photographers were also invited to place their original signed, limited edition photographs in the Silent Auction being conducted at tonight's event. We are grateful to those who chose to participate in the Auction. Guests can view the photographs and make their bids in air conditioned comfort at the model home located next door to the tent. Bidding is open from 5:30 to 7:30 p.m. Please enter through the front door. The Auction is located on the lower level.

SILENT AUCTION BIDDING
INSTRUCTIONS

- Go to model home next door to the tent and view the photographs.
- Make your selections from the signed, limited edition photographs on display.
- Bid by signing the bid sheet adjacent to your selections.
- The Auction is open from 5:30 to 7:30 p.m. tonight only. Closed during the program which starts at 6:15 p.m. and ends at 6:40 p.m.
- Winning Bidders may pick up and pay for their photographs at the model home between 7:30 and 8:00 p.m. tonight.
- Payment Form: Cash or check.

DON'T MISS THIS OPPORTUNITY TO SEE AND SUPPORT THE WORK OF
KANSAS PHOTOGRAPHERS!
Artists receive 50% of the bid amount as part of the Kansas Arts Foundation's efforts to promote recognition of Kansas photographers and encourage commercial success. The remaining 50% is retained in the KAF Endowment Fund. Thank You for Bidding.

WHY BE A PURCHASER OF KANSAS ART?

- ❖ **BEAUTY IS IN THE EYE OF THE BEHOLDER --- Old but true.** When you choose a piece of art and display it, you make a unique statement about what you saw.

- ❖ **YOUR DECISION TO PURCHASE KANSAS ART IS AN AFFIRMATION OF A PARTICULAR KANSAS ARTIST'S CONTRIBUTION TO THE CULTURAL FABRIC OF A GREAT STATE AND ITS ARTISTS.** Individual encouragement of artistic talent is fundamental to maintaining community support for the arts. What you do counts.

- ❖ **ART PIECES PURCHASED BY YOU CAN BE A PERSONAL LEGACY, ESPECIALLY IF YOU COLLECT WHAT YOU ENJOY SEEING YEAR AFTER YEAR.** Art is one way to connect with future generations through the creation of a private family heritage. Encourage the next generation by making wedding and graduation gifts of Kansas art.

- ❖ **OWNING KANSAS ART STIMULATES ARTIST COMMERCE.** Supporting a Kansas artist through purchasing art confirms Kansas as a viable commercial venue for artistic talent and is an important part of supporting Kansas arts. Just like donations, purchasing Kansas art and attending the performing arts are the ultimate endorsements of our belief in the future of Kansas arts.

WHY NOT START TONIGHT AT THE SILENT AUCTION? BE A COLLECTOR OF KANSAS ART. ADD TO YOUR COLLECTION OR BEGIN YOUR ART LEGACY BY SUPPORTING A KANSAS PHOTOGRAPHER AND THE KANSAS ARTS FOUNDATION.

HOST COMMITTEE

Debbie & Steve Brancato

Mario Brancato

Tina & Bruce Breckenridge

Jerold A. Bressel Chartered

Ashlee Bressel

Sandra & Carl Hartley

Anne & J.B. Hodgdon

Maryann & Steve Hughes

Patti & Rollin Karg

Mary & Dave Lindstrom

Ann & Bob Regnier

Outpost Worldwide

Enjoy a Kansas summer evening dining on a Brancato catered menu listening to the music of Abbey Road (a Beatles legend band) while you browse through the Kansas Arts Foundation 2012 Photographic Competition submissions featuring Kansas golf courses photographed by Kansas photographers. Many submissions will be featured in a silent auction with fifty percent of the proceeds donated to the Kansas Arts Foundation. Casual Outdoor Attire.

RSVP BY JULY 12, 2012

Email: mlindstrom@rmi.net or by enclosed reply card, addressed envelope or at our web site: www.KansasArtsFoundation.com/RSVP User Name: KAF Password: Adastra (case sensitive)

KANSAS ARTS FOUNDATION, INC.

(A 501(c)(3) public charity, tax deductible private corporation)

Cordially invites you to

A "FRIEND RAISER"

Celebrating Kansas Arts with

Special Guest

Governor Sam Brownback

JULY 20, 2012

Friday, 5:30 – 8:30 P.M.

AT

COTTONWOOD CANYON

a new home community at *The Golf Club of Kansas*

*address: 9202 Cottonwood Canyon Drive,
off Prairie Star Parkway and Ridgeview*

LENEXA, KANSAS

Program for Kansas Arts Foundation Cottonwood Canyon Event

Program time: 6:15 p.m. to 6:30

Guests may proceed upon arrival to the Buffet and are requested to be seated by 6:15 p.m.
The Buffet will remain open after the program until 7:30 p.m.

I. WELCOME AND INTRODUCTION OF EVENT HOSTS

Your Hosts tonight are people who have chosen to express their confidence in the ability of Kansas Arts Foundation to build a secure future for the private funding of Kansas arts.

II. INTRODUCTION OF SPECIAL GUEST: GOVERNOR SAM BROWNBACK

III. INTRODUCTION OF ATTENDING KANSAS ARTS FOUNDATION DIRECTORS:

Guests are invited to review the printed biographies of each of the Kansas Arts Foundation directors provided in the guest folders which will tell you **WHO** they are; **WHERE** they are from; and **WHAT** they have done. BUT we hope today you will take time to meet those attending this evening personally and discover **WHY THEY CARE."**

IV. ANNOUNCEMENT OF THE WINNER OF THE 2012 KANSAS ARTS FOUNDATION PHOTOGRAPHIC COMPETITION

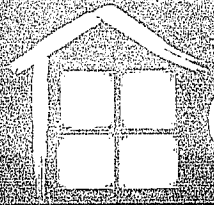
V. SILENT AUCTION ANNOUNCEMENTS

Collecting Kansas art matters! Bidding instructions for the Silent Auction are enclosed in the guest folders on bright blue colored paper for your convenience.

VI. CLOSING REMARKS FROM KANSAS ARTS FOUNDATION PRESIDENT -- LINDA BROWNING WEIS

Donations Empower Endowments

Enjoy the legendary music of Abbey Road and
Dinning on the Brancato catered buffet



THE CULTUREHOUSE

THE ARTS CENTER FOR THE PEOPLE



2011 ANNUAL REPORT

The Culture House is an innovative, dynamic model for a community arts organization that is reshaping how the arts can benefit society by:

- Connecting **professional artists** directly with children and youth
- Employing artists and **empowering new artistic endeavors**
- Providing **arts education** while rebuilding learning confidence for at-risk and incarcerated Children and Youth
- Engaging thousands of hours of **volunteer involvement**
- Producing public **performing arts and cultural events** known for their high quality of craftsmanship and inspiring content

all within a financially efficient and sustainable system.



The Culture House consists of three main areas that interact to increase the quality of programs offered to our community and increase the impact of our services:

EXCELLENCE:

Professional programs and productions

EDUCATION:

Quality arts education offered to both our academy and our outreach students by professional teaching artists

OUTREACH:

Rebuilding at-risk and incarcerated youth's confidence in their ability to learn and succeed academically through arts education

BOARD OF DIRECTORS

Richard J. ...
Chair
R. J. Enna & Assoc

Mark Ca
SuperninjaRocketmonke

Dr. Donna
UMKC School of Educ

Rick G
GatewayIDG

Dr. Kelly J
Centerpoint Medical C

Roxar
The Children's

Dr. S. Marie McC
UMKC School of Educ

Chuck D
Deeds Select Ad

Michael C
Port Authority o

Fou
Jeremiah
Executive Di

Mona Störing
Artistic Di
Störing Dance Tl

year at the Culture House we have seen our very first STAR ent (at program) graduate from college with a degree eater and as a McNair Scholar, other students gain college larships into top national programs, Störing Dance Theater's luction Underground chosen by KCPT to be filmed for their oming season, and hundreds of children and families find munity at the 'new neighborhood', Culture House.

s have consequences and shape our daily lives trickling down ow neighbor treats neighbor. This has been a rging principal at The Culture House since its inception. the arts are widely recognized as one of the most eful and influential purveyors of ideas to our culture that ex- The arts have power. The arts can be a catalyst for building ur society or degrading the very pillars that keep our commu- s civil and just. And they bring great joy, depth, and inspira- to our personal and community lives.

he Culture House we are in the middle of a grand riment. With the artistic and creative gifts that we e been given, we are reinforcing and, in some cases, roducing Judeo-Christian principals that have inspired some e most profound art, most compassionate eties, and most innovative cultures in man's history. We can ome a culture that respects the power of the arts and engag- i the arts in a meaningful and constructive manner.

signs are good at this stage of the experiment, but we need help to see just how far we can go in succeeding at our ll piece of a grander vision.

us.

miah Enna
utive Director & Founder

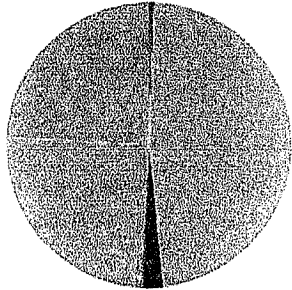
BY THE NUMBERS

- **750** students studying at TCH Academy per week
- **1,200** students studying at TCH Academy per year
- **100** at-risk and incarcerated children and youth served by our STAR Program
- **70** – Percentage of earned revenue of annual budget placing The Culture House at the top of the non-profit sector innovating new models for non-profit efficiency and sustainability according to research by the Yale School of Management, The Pew Charitable Trust, and The Foundation Center.
- **1** First Call Artists: The Culture House is home to world-class, recognized artists such as choreographers Mona Störing-Enna, Tobin James, composer Jay Pfeifer, dancer/director Courtney Kierl-Bourman, choreographer/teacher Marc Wayne and more.
- **24,000** Audience members who enjoy Culture House performances and performers each year.
- **12** And growing. Kansas City and national organizations that The Culture House partners with to combine efforts to serve as many as possible in the highest quality way.
- **27,000** Number of volunteer hours in 2010-11



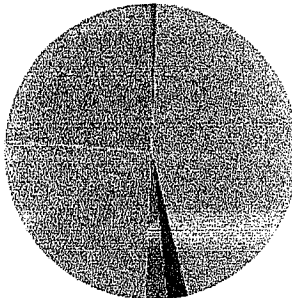
FINANCIALS

2011 Revenue by Division



- Art .3%
- Arts Outreach .3%
- Dance School 47.9%
- Music School 2.4%
- STAR Program .2%
- Storling Dance 14.9%
- Summer Camps 10.2%
- Theatre School 24.2%

2011 Expenses by Division



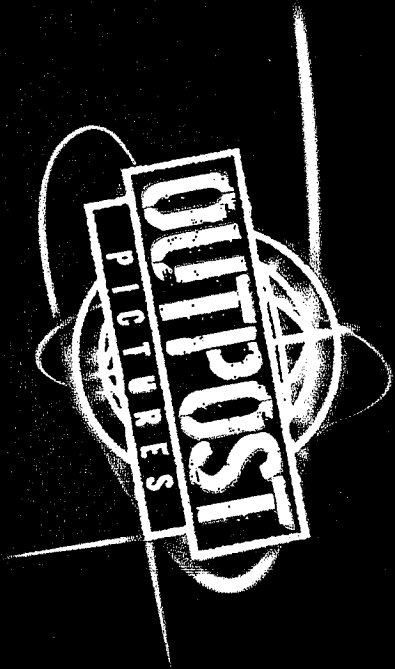
- Art .4%
- Arts Outreach .4%
- Dance School 45.4%
- Music School 2.2%
- STAR Program 2.5%
- Storling Dance 15.6%
- Summer Camps 9.8%
- Theatre School 23.7%

The Culture House (TCH), a 501c organization, had a tremendous 2011 fiscal year, with record breaking performances from its professional dance company, consistently high enrollment in all of its academy divisions, and further development in its arts outreach and STAR program, in spite of our difficult economy. TCH continues its impressive track record of sustainability, by raising 74% of its income through its program tuition and related fee income, and performance fees. TCH has only relied upon contributions (22%) and grants (4%) for 26% of its operating needs. The life blood of TCH is the staff, who provide all of the training and oversight of the operation. TCH Payroll Expense accounted for 16% of total expenses. TCH is not without its challenges, however. TCH services debt on their 20,000 square foot facility. Without this debt, TCH would be virtually self sufficient, and could focus on grants and contribution campaigns to further expand its academies and professional dance company, as well as its arts outreach and very important community based STAR program to benefit the underprivileged in our region. TCH will also see in 2012 a reduction of approximately 6% from contributions from the loss of a donor's trust recurring contribution, whose obligation is being phased out on a previously determined schedule. This income was relied upon to cover debt service. TCH is embarking on an aggressive campaign to increase contributions, grants and program sponsorship in 2012. Please see financial statement insert for more details.



14808 W 117th Street | Olathe, Kansas 66062
913.393.3141 | www.culturehouse.com

The Culture House is recognized by the Internal Revenue Service as a 501(c)3 not for prof



FULL SERVICE HD PRODUCTION
Kansas City. Worldwide.

www.outpostbc.com

Ph: 913-491-1124

Toll Free: 866-843-5354

Fax: 913-631-8004



OUTPOST
PICTURES

3-34



3-35

TWO DAYS FROM EVERYWHERE...

The Mission of Artists Helping the Homeless is to:

- *Provide Aid with Respect
- *Provide Advocacy for those seeking to leave the streets
- *To Raise Awareness of Homeless issues in Kansas City
- *To work with others to address underlying causes

Organization History

Artists Helping the Homeless arose when a local businessman saw a group of MidAmerica Nazarene University students serving dinner to the homeless in a park downtown. The relationships from those meals grew as needs were identified and addressed.

In the beginning, the group simply provided Sunday evening meals to the homeless in the area. In the years since, the organization has become an official 501(c)(3) and partners with dozens of local churches, schools, universities, and civic and philanthropic agencies to provide two weekly meal services, run the "Be the Change" mobile unit program, raise community awareness and begin an emergency intervention program for youth ages 18-21.

"You make a living by what you get, but you make a life by what you give."

Artists Helping the Homeless

3238 Gillham Rd
Kansas City, MO 64109

816-668-1007

Artistshelpingthehomeless.org

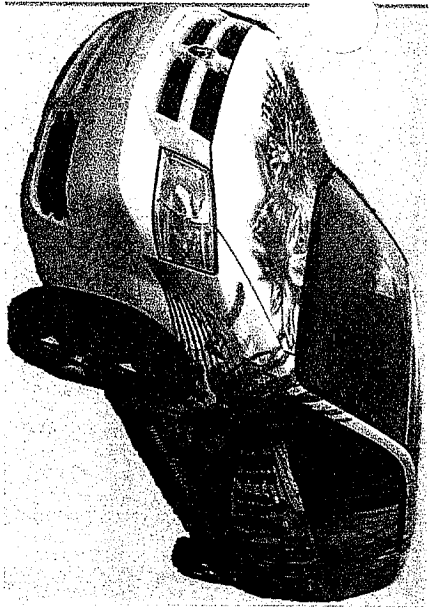
kato@artistshelpingthehomeless.org



Artists Helping the Homeless

"Helping the Homeless, Helping the Community"

Phone: 816-668-1007
www.artistshelpingthehomeless.org



"Be the Change" Van

The "Be the Change" van is the face of the mobile unit pilot program Artists Helping the Homeless (AHH) started a year ago in partnership with the Saint Luke's Health System. The program provides transportation for Kansas City's Homeless from streets, stores and hospitals to safe a place.

Riders are referred to the AHH "Be the Change" Van by area hospitals, homeless service agencies, police, friends and family or by the riders themselves. We use the time in the van to learn the person's story, their needs and goals for the future. Where appropriate we will follow-up with the riders in the following days, partnering with other community organizations to find placements in Detox facilities, long term treatment centers, transitional living houses or other services to address individual challenges. What we do would not be possible without the cooperation of our partner agencies.

We work with every major demographic group in the homeless population, including at-risk youth, battered women, homeless families and the chronic homeless. The van provides pre-scheduled rides from 9 am to 5 pm daily and urgent rides from 5 pm to 1 am every night.

At-Risk Youth Intensive Interventions

In the course of rolling out the van program we formed partnerships with many groups that advocate for at-risk youth including Synergy Services and reStart Inc.. Out of these partnerships we became aware of the incredible lack of services available for youth aging out of foster care and the child services system.

In all of Kansas City there were only a handful of service providers in the whole metro area who dealt specifically with this demographic. When young people turn 18, they are no longer eligible for many services. This transition can be especially jarring for youth in the foster care system or wards of the state.

Our Intervention program works with the other service providers in the area to keep youth between the ages of 18 and 21 off the streets and in school while they look for and find placement in programs with more appropriate and extensive service offerings.



Kato House Emergency Intervention Center

With support from the Health Care Foundation of Greater Kansas City, we are in the process of opening an Emergency Intervention Center at 3238 Gillham Rd. in Midtown, Kansas City. The Center will serve as a rallying point for the "Be the Change" Mobile Unit program, as well as a facility offering on hand case work and medical services.

The need for this center was realized out of the work done in the last year with the mobile unit. The center allows continuity of both shelter and services in one place. We will have a thirty bed capacity in the center after renovations are complete.

We believe that providing seamless services from one stage of reintegration to the next will greatly improve the chances of success as our friends work to leave the streets. This center will not duplicate services provided by existing agencies, but supplement what is already available and endeavor to catch those individuals who may otherwise fall

We work with every major group within the homeless community, including chronic homeless, youth, battered women and homeless families

Statistical Highlights

- Given 10,000 rides to 2,000 individuals
 - Helped shelter 1,400 people for 25,000 nights
 - 22,000 nights arranged with partners
 - 3,000 nights provided directly
 - Enrolled 280 individuals in Detox services
 - Assisted 75 individuals currently in full or transitional reintegration.
 - 86% reduction in non-emergent ER visits to Saint Luke's Hospital
 - Over \$3,000,000 saved in ambulance, hospital, police, and judicial fees
- Last year we saved our community \$5 with every \$1 of funding we received**



Rollin Karg

How does an Industrial engineer come to be an accomplished artist? Rollin Karg, engineer turned photographer turned potter turned woodworker turned glassblower, has turned one of his one-time hobbies into a full time career. He attributes his artistic inclination in part to a strong desire to work with his hands, coupled with the inspiring, park like location of his studio. The tree studded setting is an ironic oasis in Kechi. This is where Rollin creates his fragile one-of-a-kind treasures.

Standing under his spectacular awning and facing the furnace he built, Rollin concentrates on working the hot glass. Skillfully he turns a flowing globe, adding intricate, colorful designs to the crystal-clear mass. The fiery furnace and forces of gravity heighten the artists' exhilaration at bringing dramatic form to the soft, hot glass. The excitement is intensified by nature's own beautiful backdrop, and exquisitely unique glass pieces are born.

Rollin studied hot glass at Emporia State University, commuting from Wichita while building his first furnace. He originally came to Wichita to attend Wichita State University on a football scholarship. His birthplace was Columbus, Ohio, but he was raised in Miami, Florida. Many changes have taken place in his artistic direction since he came to Wichita over thirty years ago.

Witness the magic of Rollin's glassblowing first hand. Visit the studio/gallery during business hours. Tours are available. Or simply hold the magic in your hand when you visit his studio, art show, or in discriminating galleries and private collections across the United States and Europe.

