

---

---

---

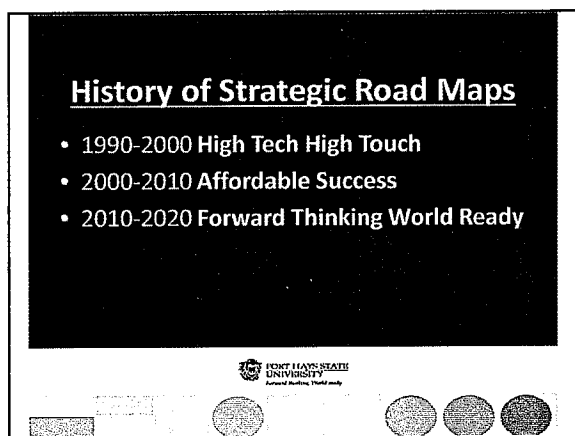
---

---

---

---

---



---

---

---

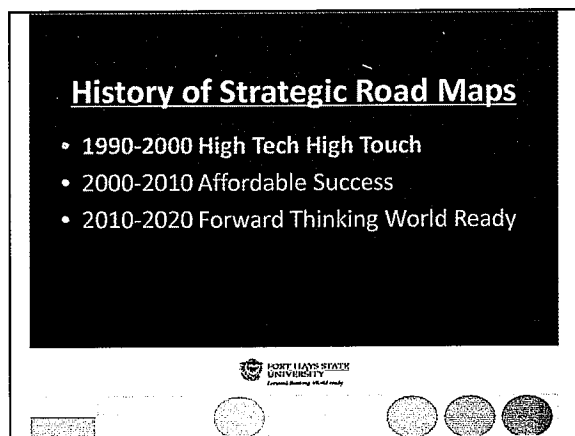
---

---

---

---

---



---

---

---

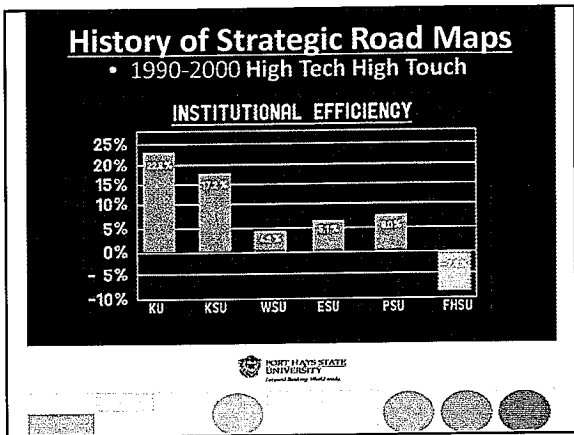
---

---

---

---

---




---

---

---

---

---

---

---

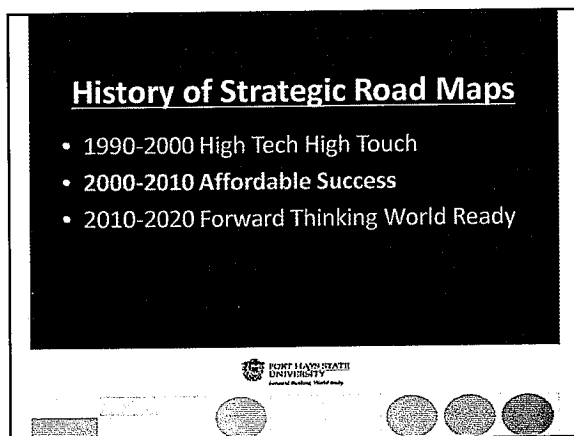
---

---

---

---

---




---

---

---

---

---

---

---

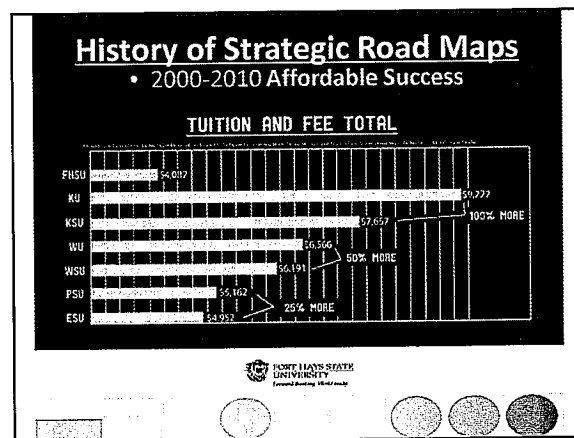
---

---

---

---

---




---

---

---

---

---

---

---

---

---


---

---

---

### History of Strategic Road Maps

- 1990-2000 High Tech High Touch
- 2000-2010 Affordable Success
- 2010-2020 Forward Thinking World Ready




---

---

---

---

---

---

---

---

**By 2020,**  
**Fort Hays State**  
**University**  
will be  
recognized  
as one of  
the nation's  
fastest growing  
universities in  
students served  
and quality  
of education  
provided.

---

---

---

---

---

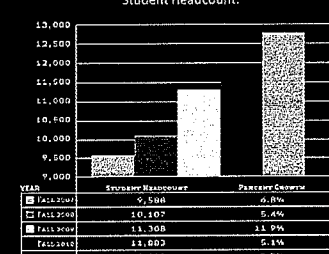
---

---


---

### Commitment to Growth

Student Headcount.



Year	Student Headcount	Percent Growth
Fall 2007	9,500	-
Fall 2008	10,107	6.4%
Fall 2009	11,308	11.9%
Fall 2010	11,800	5.1%
Fall 2011	12,000	7.7%




---

---

---

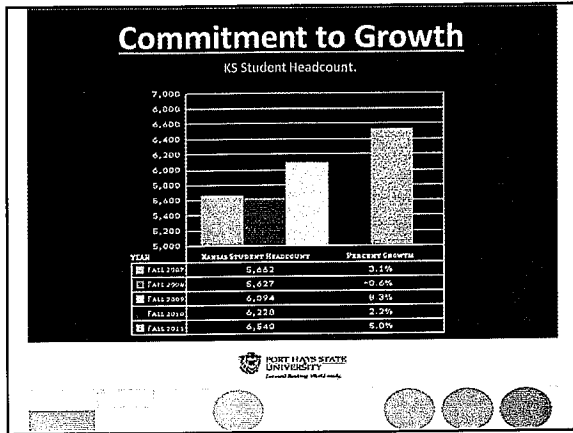
---

---

---

---

---




---

---

---

---

---

---

---

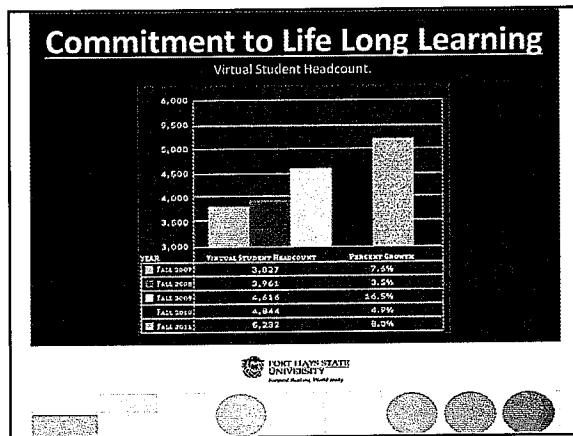
---

---

---

---

---




---

---

---

---

---

---

---

---

---

---

---

---

### U.S News & World Report

*"Fort Hays State Universities Undergraduate program ranked #2 nationally  
And three of its graduate programs received rankings of distinction.*

*The three distinguished Masters Programs were the Business MBA, the  
Masters in Nursing, and the Masters in Education."*

-U.S News & World Report

FORT HAYS STATE UNIVERSITY  
Award-Winning. World-Class.

---

---

---

---

---

---

---

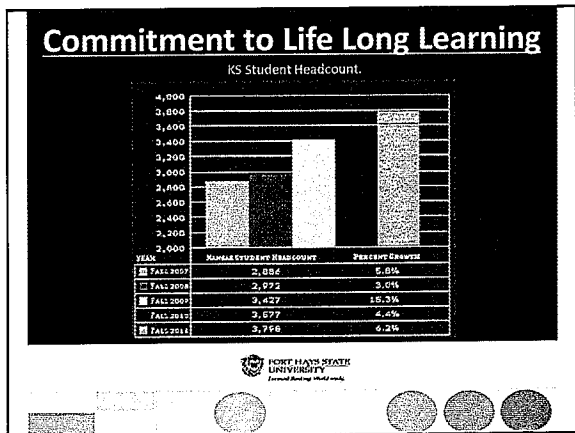
---

---

---

---

---




---

---

---

---

---

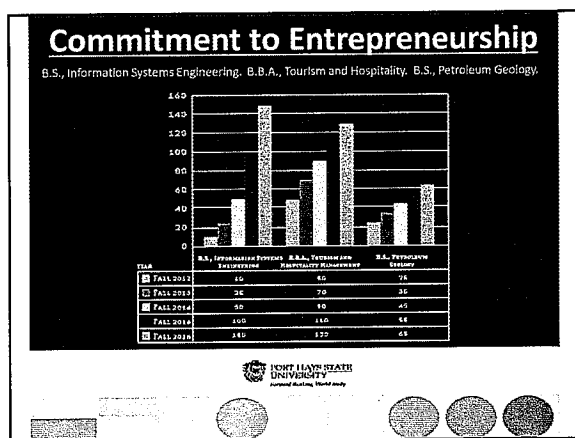
---

---

---

---

---




---

---

---

---

---

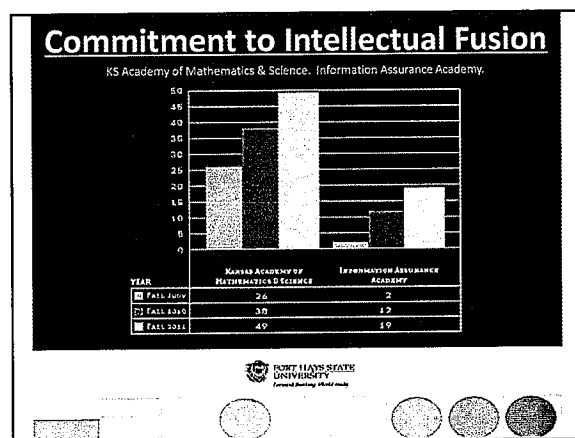
---

---

---

---

---




---

---

---

---

---

---

---


---

---

---

## Government Budget

Government Budget recommends to fully fund Kansas Academy of Mathematics & Science at 40 students with additional \$203, 200.




---

---

---

---

---

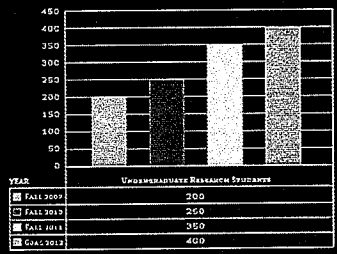
---

---


---

## Commitment to Intellectual Fusion

Undergraduate Research Students



YEAR	Undergraduate Research Students
Fall 2009	200
Fall 2010	250
Fall 2011	350
Fall 2012	400




---

---

---

---

---

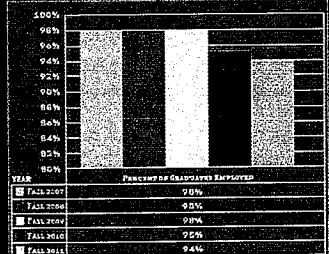
---

---


---

## Commitment to Social Relevance

Percent of Graduates Employed.



YEAR	Percent of Graduates Employed
Fall 2007	90%
Fall 2008	82%
Fall 2009	90%
Fall 2010	72%
Fall 2011	94%




---

---

---

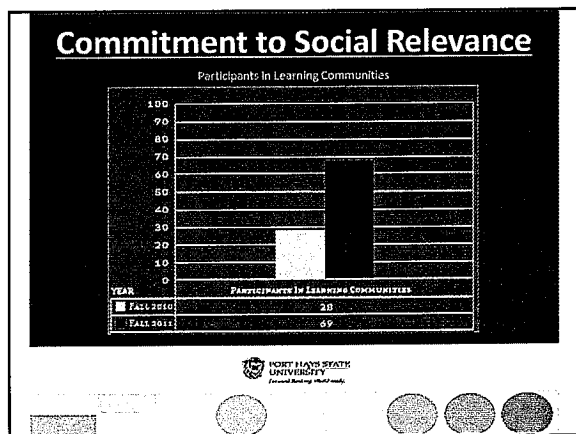
---

---

---

---

---




---

---

---

---

---

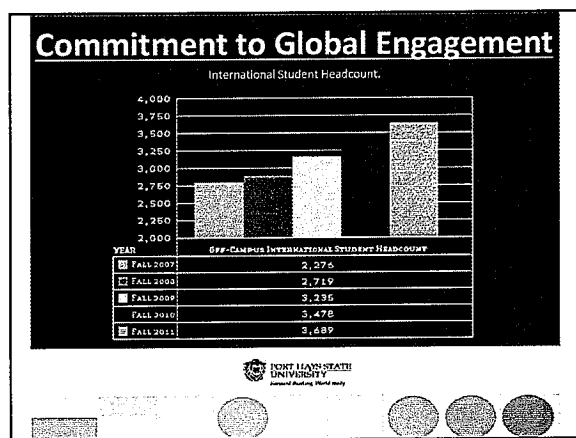
---

---

---

---

---




---

---

---

---

---

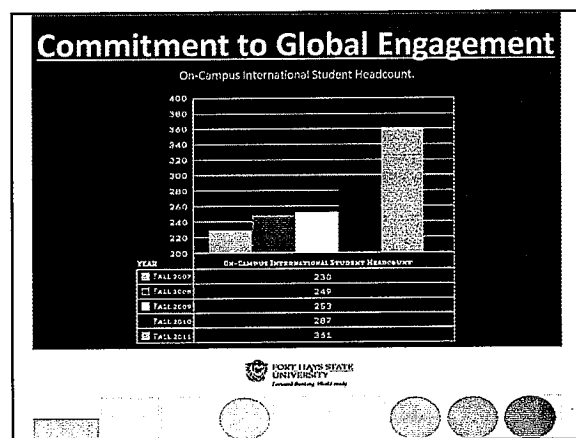
---

---

---

---

---




---

---

---

---

---

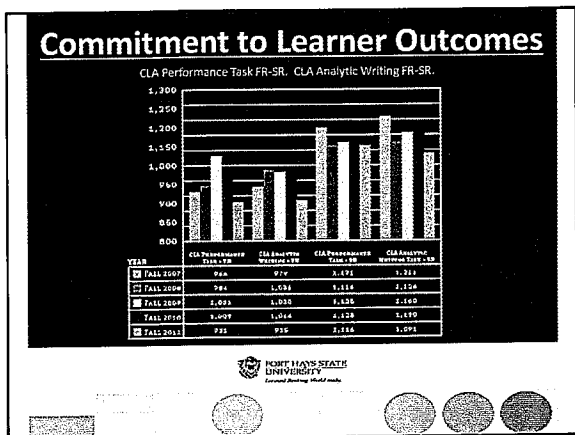
---

---

---

---

---




---

---

---

---

---

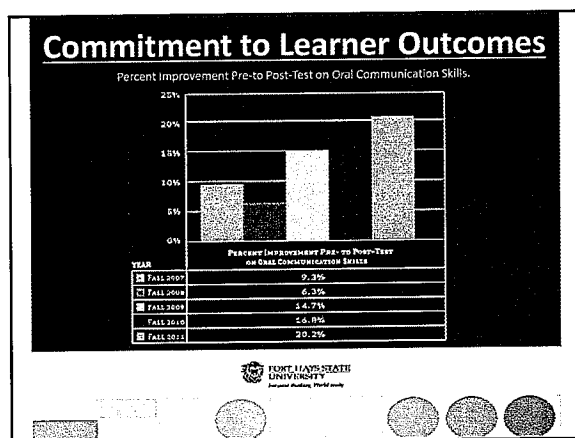
---

---

---

---

---




---

---

---

---

---

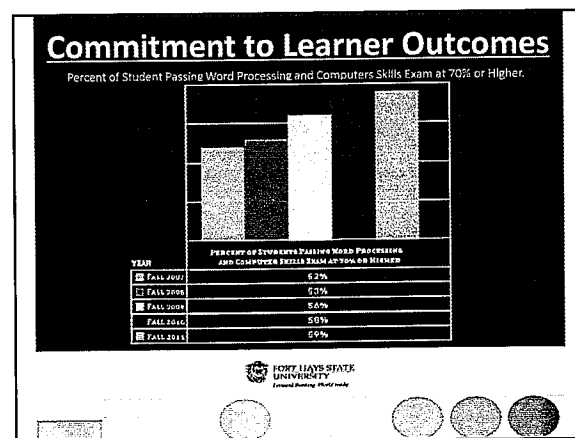
---

---

---

---

---




---

---

---

---

---

---

---

---


---

---



**FHSU Request**

Fort Hays State University request a 1.8% higher education index budget increase of \$602, 000.



The slide features a black background with white text. At the bottom, there is the Fort Hays State University logo and a row of four decorative circles of varying shades.

---

---

---

---

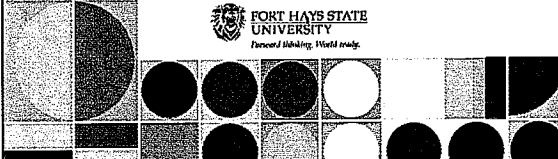
---

---

---

---

**FORWARD THINKING. WORLD READY.**



The slide features a light gray background with a grid of geometric shapes (squares and circles) in black and white. The Fort Hays State University logo is centered below the headline.

---

---

---

---

---

---

---

---