

KANSAS BOARD OF REGENTS



# House Education Committee Update on Higher Education

Andy Tompkins, President & CEO

February 1, 2012



LEADING HIGHER EDUCATION





# Higher Education Is Contributing To The Economy Of Kansas





# Higher Education in Kansas

- ★ 32 public higher education institutions
- ★ Educating 187,466 students (2011)
- ★ Awarding 39,182 degrees (2011)
  - 10,283 technical certificates (system wide)
  - 8,242 associates (system wide)
  - 14,220 bachelor's
  - 5,093 master's
  - 1,344 doctoral

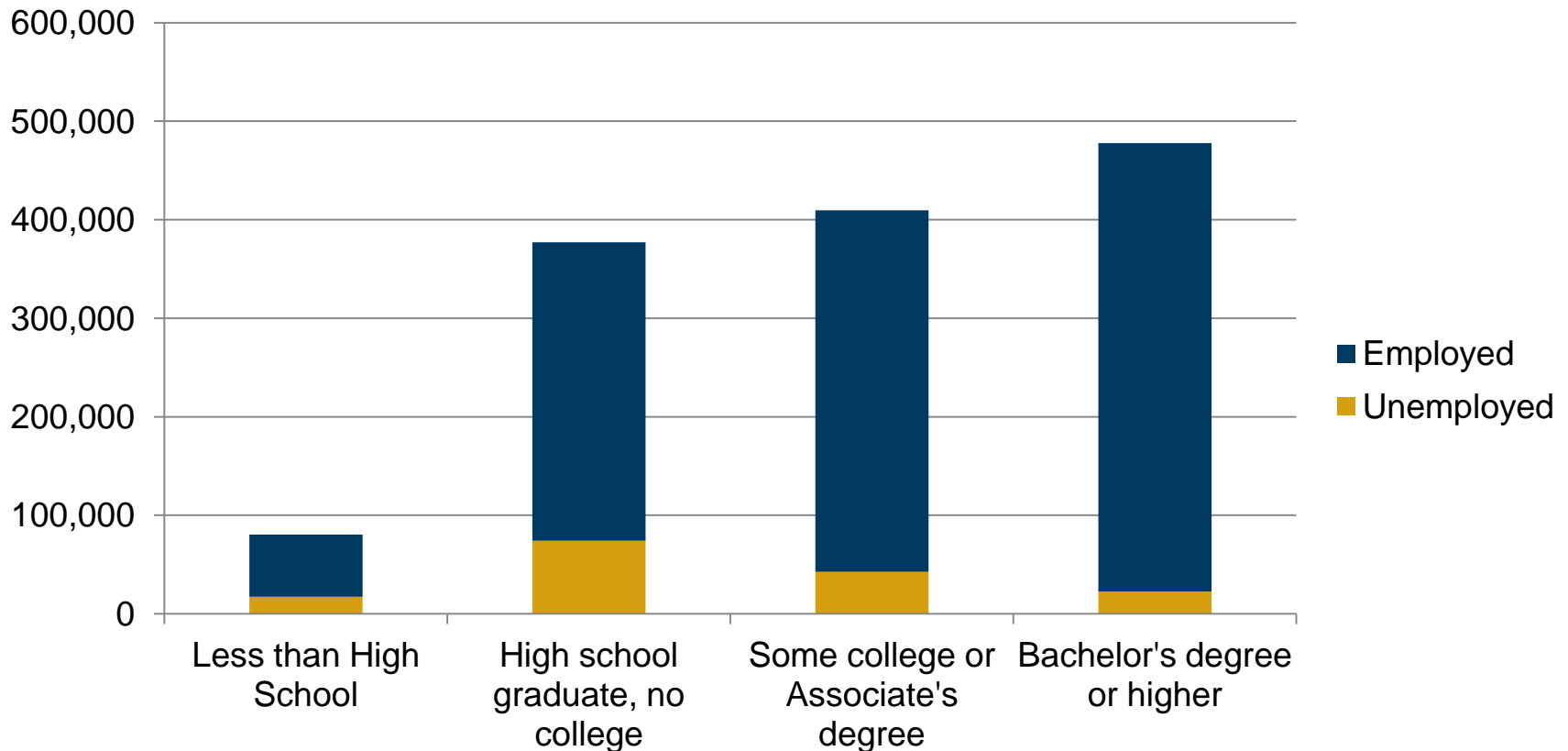


# Higher Education = Jobs

Occupation	Selected Graduate Populations (Academic Year 2010)
Truck Drivers (CDL)	422
Welders	227
Nurses	6,902
Doctors	340
Engineers	2,013
Teachers	2,987
Veterinarians	136
Pharmacy Technicians	38
Lawyers	408
<b>Total Higher Education Graduates</b>	<b>35,412</b>



# Employment & Education Levels





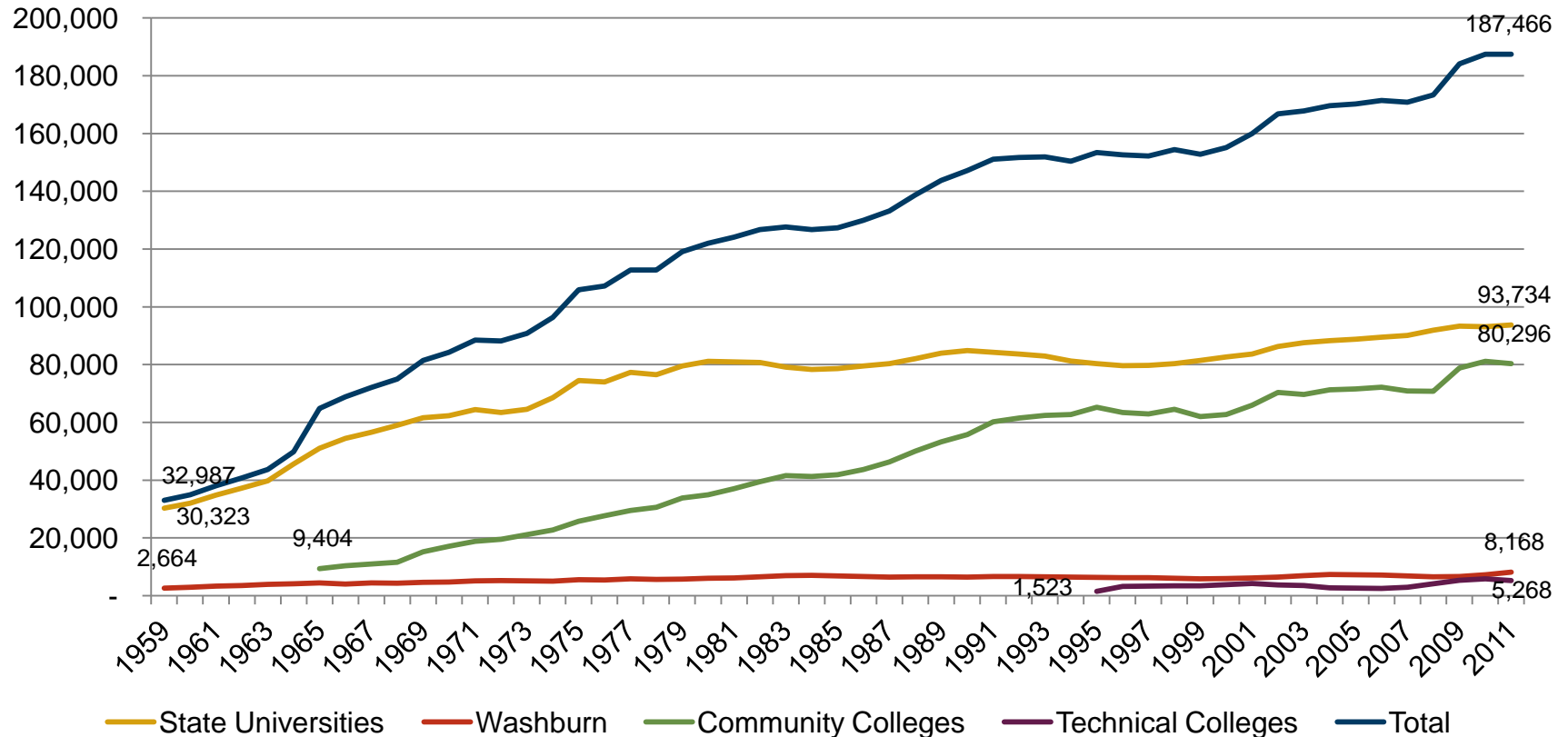
# Return On Investment

- ★ For every \$1 invested by the state, Kansas receives \$11.94 in return



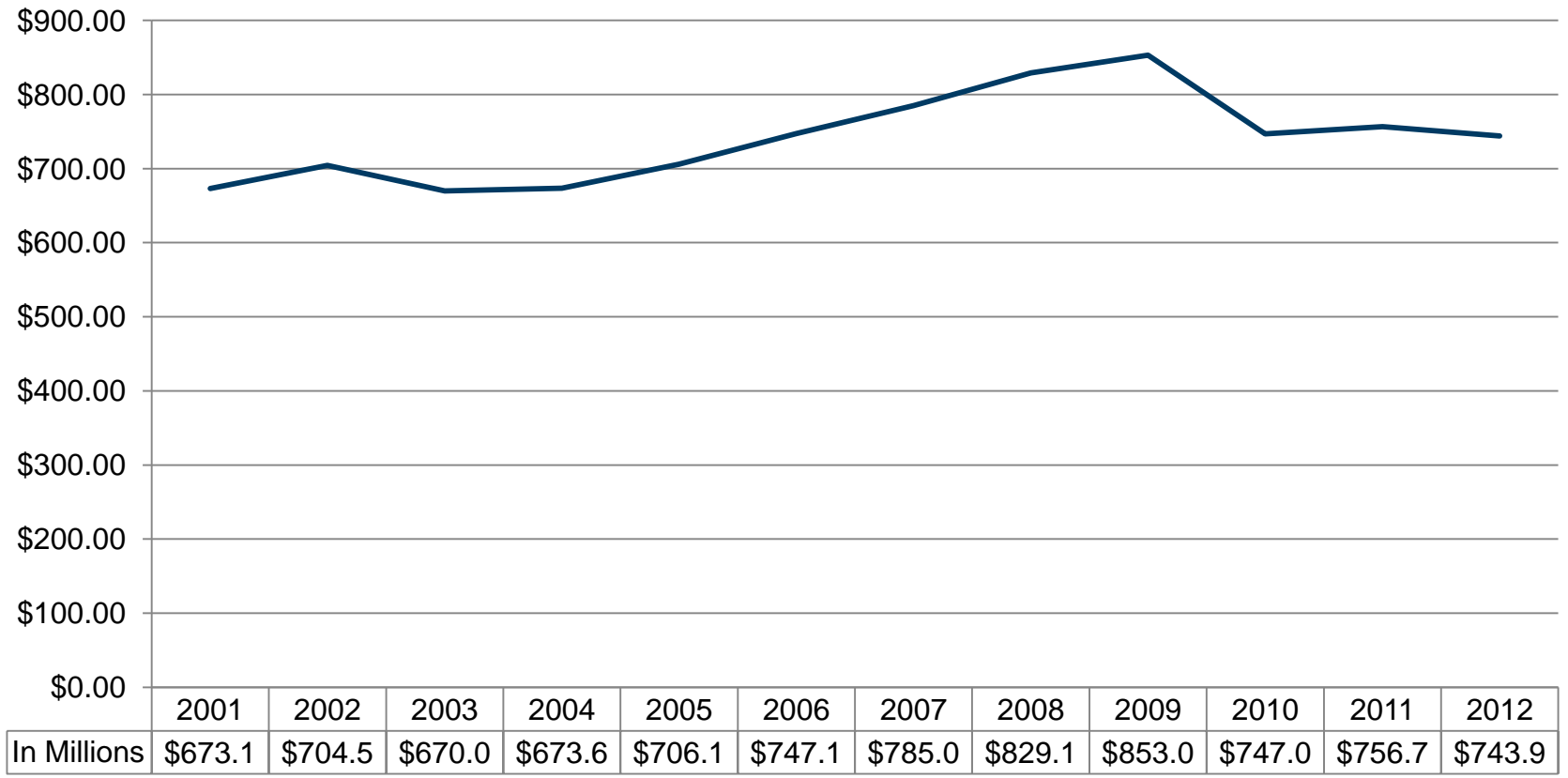


## Student Enrollment (Fall Headcount)





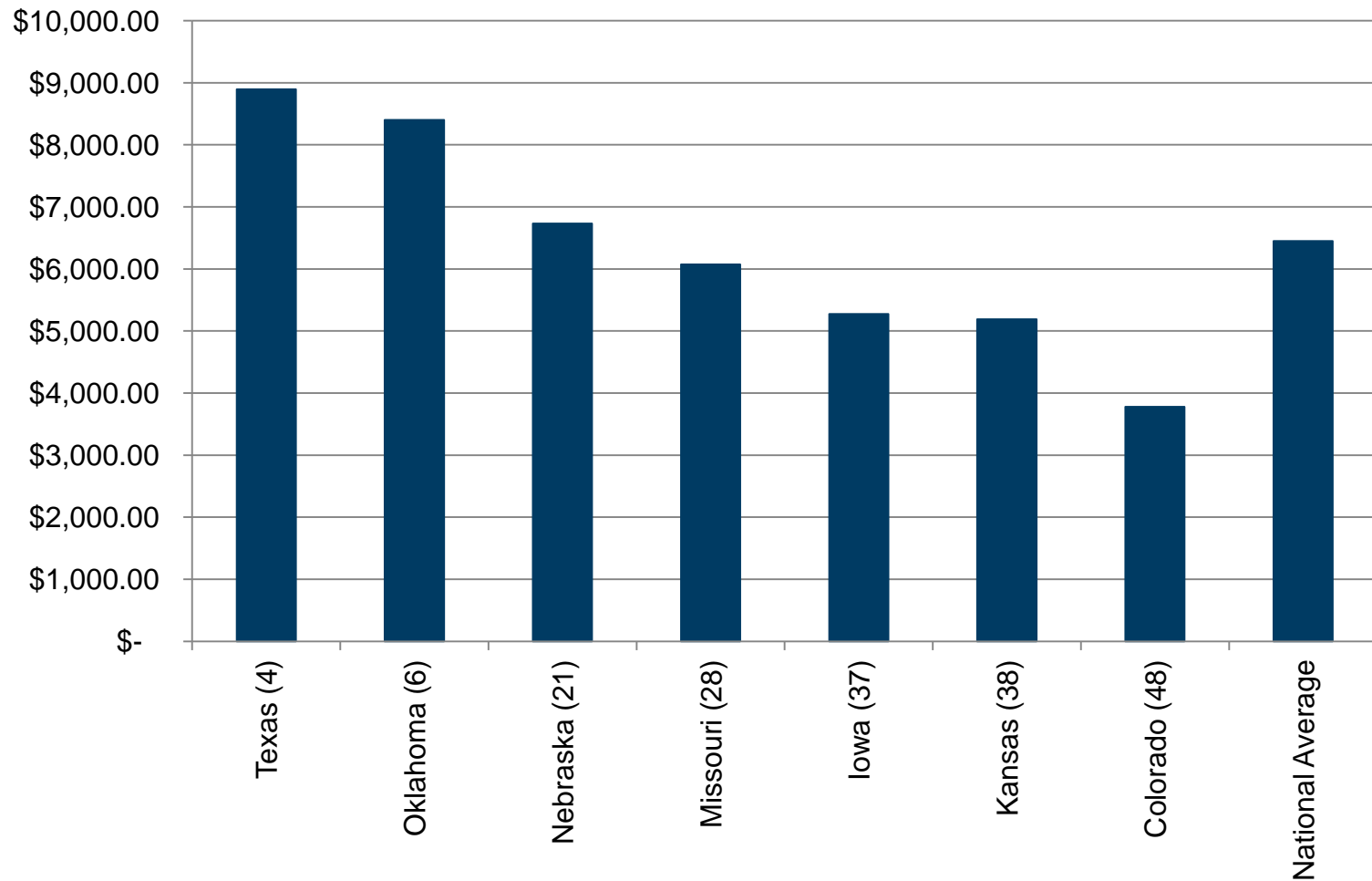
# State Appropriations for Higher Education





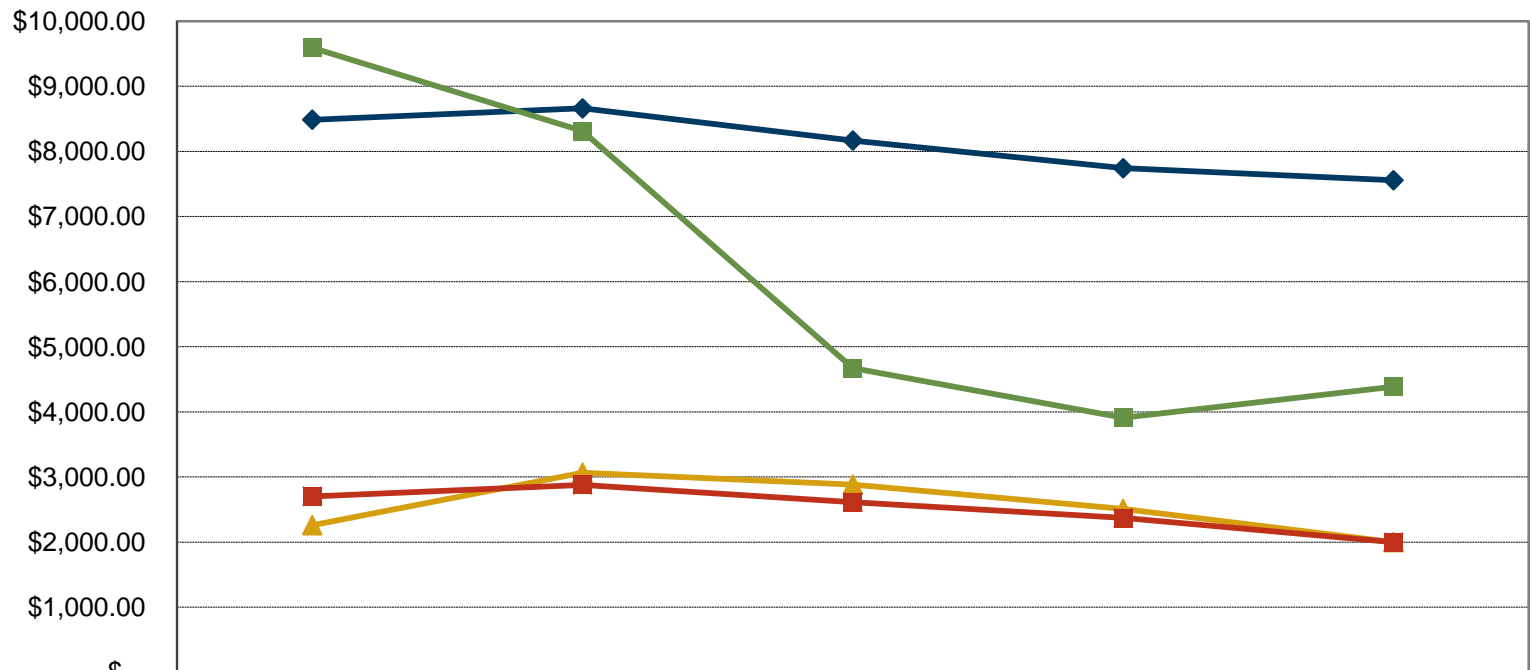


## 2010 Educational Appropriations per FTE





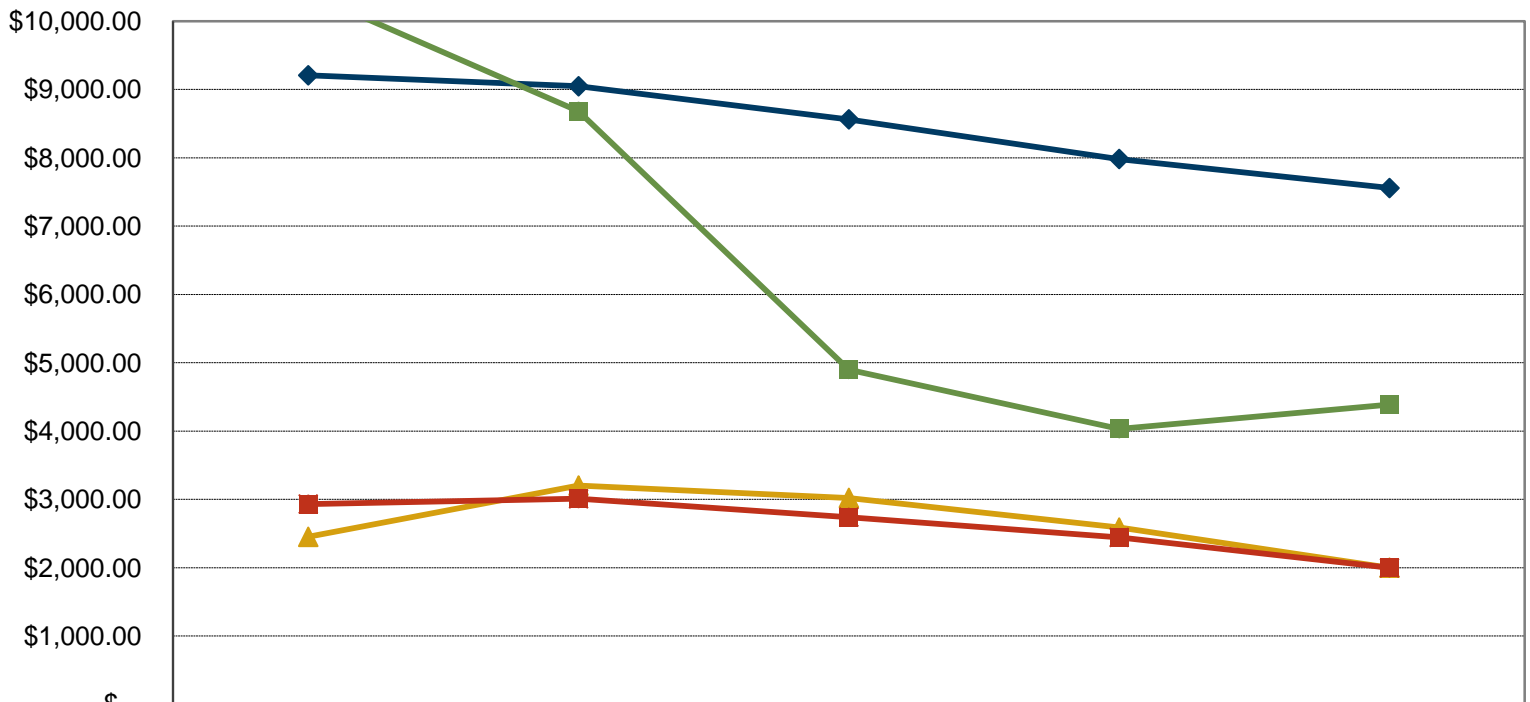
## State Appropriations Per FTE by Sector - Unadjusted



	2007	2008	2009	2010	2011
◆ FTE State Universities	\$8,486.40	\$8,660.13	\$8,166.01	\$7,740.42	\$7,556.35
▲ FTE Washburn	\$2,259.08	\$3,064.99	\$2,881.19	\$2,507.94	\$1,999.99
■ FTE Community Colleges	\$2,702.11	\$2,879.58	\$2,612.68	\$2,369.03	\$1,995.58
■ FTE Technical Colleges	\$9,592.29	\$8,312.10	\$4,671.67	\$3,909.74	\$4,387.48



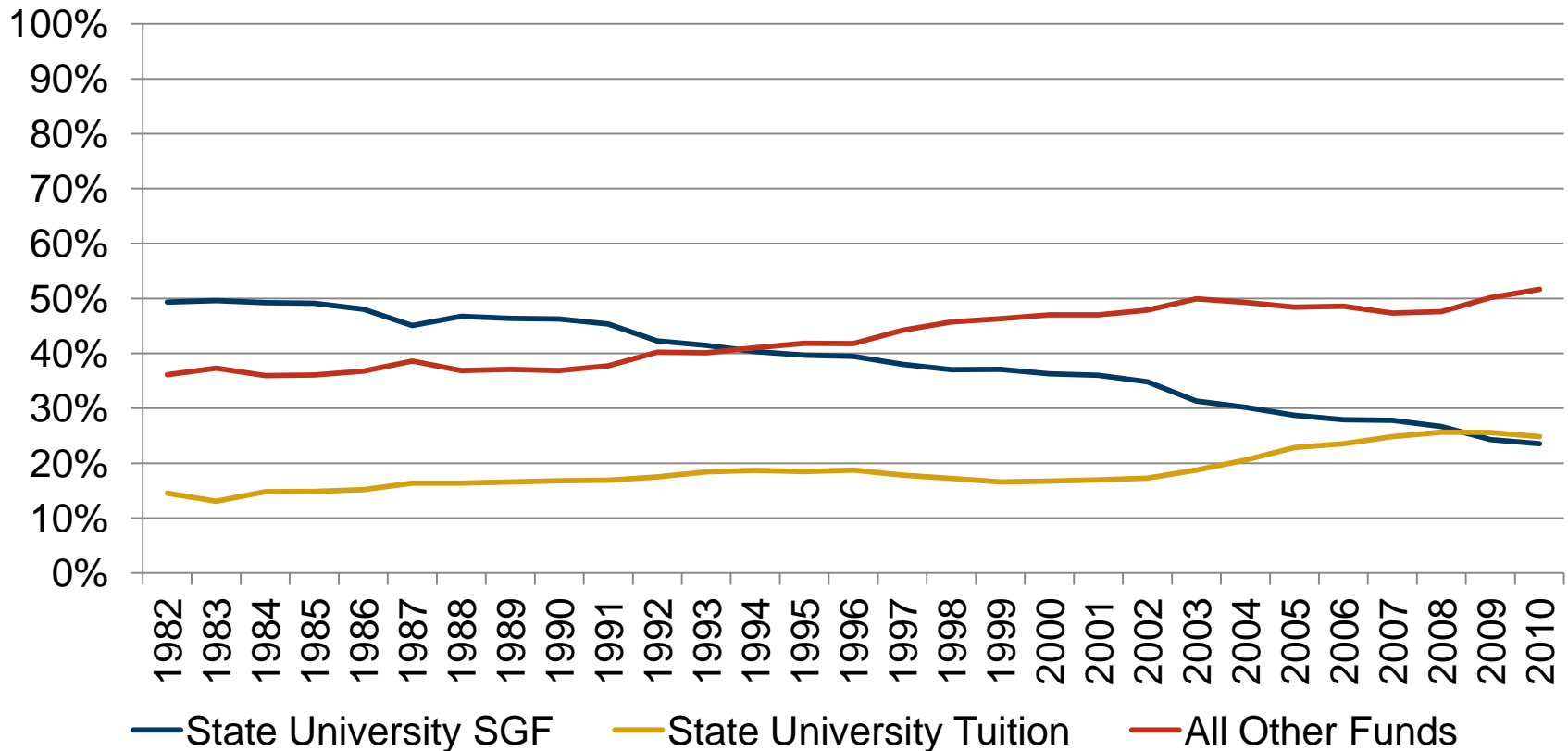
## State Appropriations Per FTE by Sector - Adjusted



	2007	2008	2009	2010	2011
◆ FTE State Universities	\$9,206.91	\$9,046.28	\$8,561.94	\$7,981.75	\$7,556.35
▲ FTE Washburn	\$2,450.88	\$3,201.65	\$3,020.88	\$2,586.13	\$1,999.99
■ FTE Community Colleges	\$2,931.52	\$3,007.98	\$2,739.35	\$2,442.90	\$1,995.58
■ FTE Technical Colleges	\$10,406.69	\$8,682.73	\$4,898.17	\$4,031.64	\$4,387.48

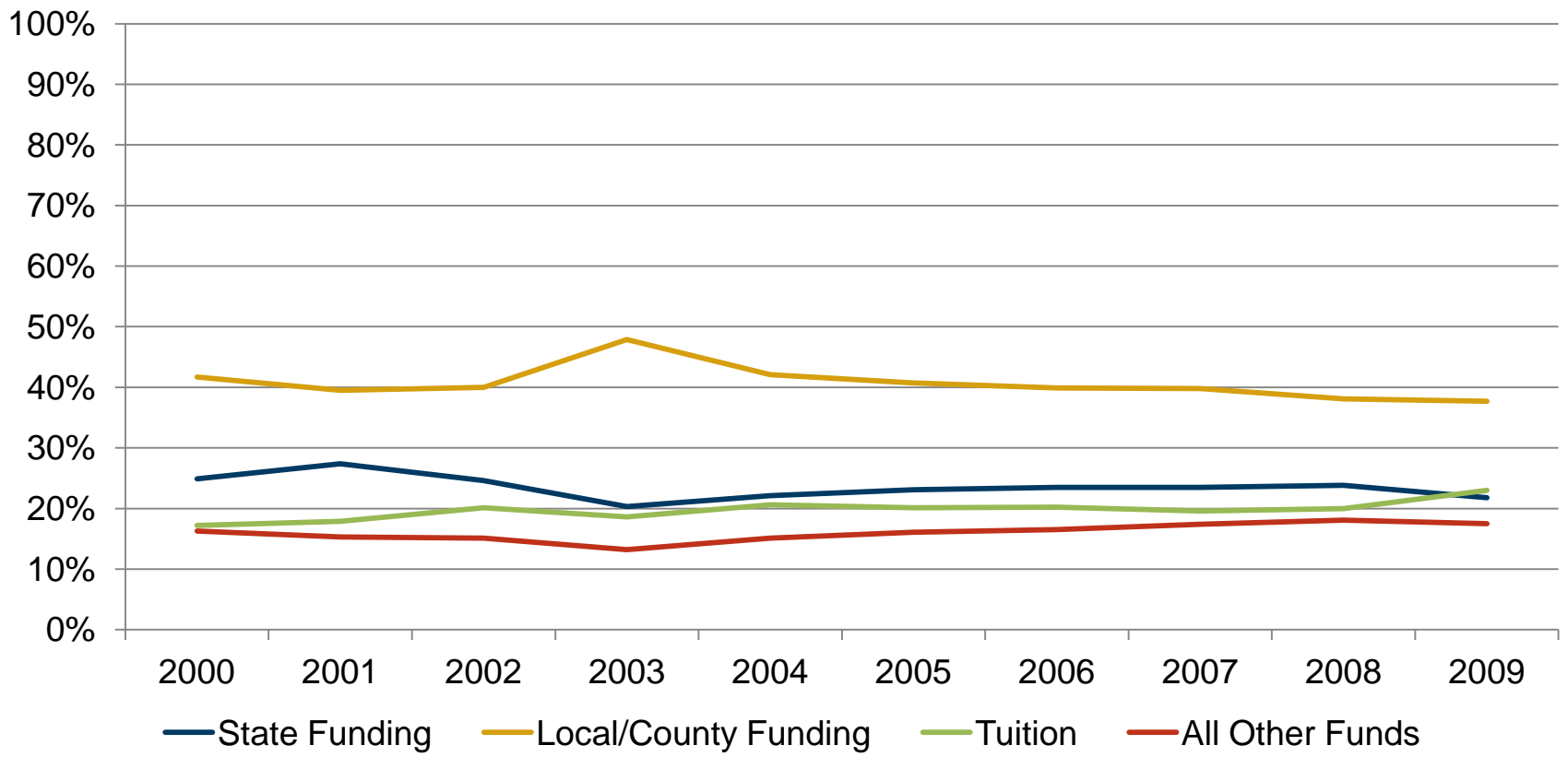


# State University Funding Sources



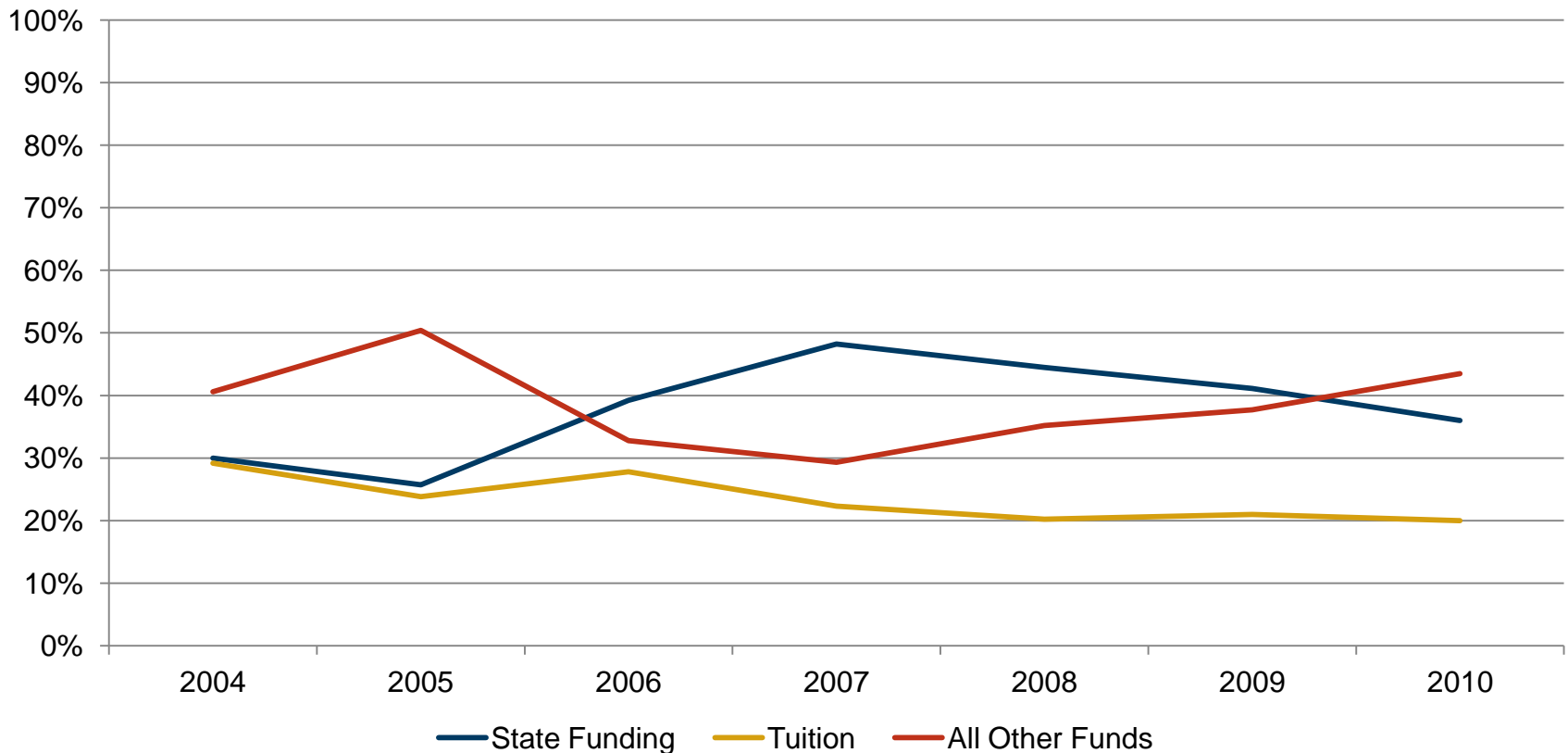


# Community College Funding Sources





# Technical College Funding Sources



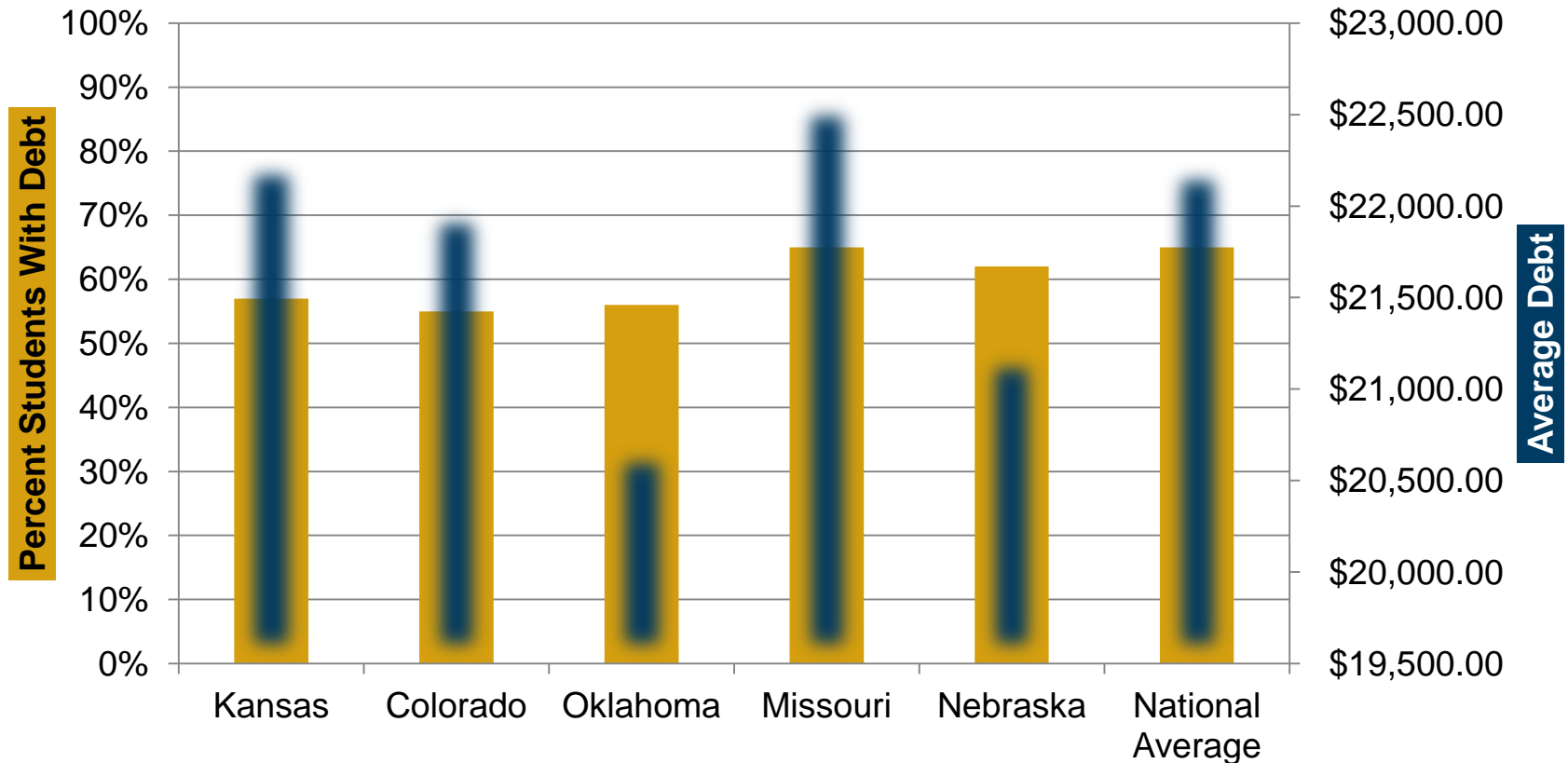


# Financial Aid

- ★ In 2009-2010
  - Kansas was among 15 states who spent less than 5% of higher education funding on state financial aid
  - National Average = 11%
- ★ Per undergraduate FTE, the Kansas expenditure on financial aid was \$130
  - National Average = \$627



# 2010 Educational Debt University Graduates







# Deferred Maintenance

- ★ State universities are stewards for:
  - 818 state-owned buildings which encompass 30 million square feet and represent two-thirds of the state's buildings
  - At least 75% of the buildings are 30 years or older
  - 26,214 acres of land
  - Replacement value of \$7.3 billion
- ★ According to our 2010 deferred maintenance report, it is estimated to be over \$900 million
- ★ Funds needed for annual maintenance is estimated to be approximately \$90 million



# Deferred Maintenance

- ★ Educational building fund was authorized in 1918 and has been a one mill statewide levy since 1955.
- ★ Since 1997, one half of the levy has been used to pay off the Crumbling Classroom bonds which will be paid off in FY 12.
- ★ In FY 13, the educational building fund will have \$30+ million for use by universities.
- ★ Dedicated annual state funds of \$60-70 million coupled with funds from university budgets would make significant progress on deferred maintenance.



What goals is the Board pursuing to improve higher education in Kansas?

- ★ Increase the number of Kansans with a postsecondary certificate, credential, associate degree, or bachelor degree
- ★ Enhance the performance and reputation of our universities
- ★ Adopt a strategic agenda to accomplish the goals = Foresight 2020



# Foresight 2020 – Current Initiatives

## ★ Align Systems and Institutions

- Revised Qualified Admissions Standards for State Universities
- Working with High Schools in Clarifying Postsecondary Expectations
- Addressing Transfer and Articulation Within Higher Education
- Established a Council of Chief Research Officers

## ★ Increase Participation

- Developing a Plan for Recruiting Kansans Back to School to Finish a Degree or Credential
- Advocating for Increased State and Local Support for Student Financial Aid
- Encouraging Alternative Delivery Systems



# Foresight 2020 – Current Initiatives

- ★ Improve Retention and Graduation Rates
  - Aligned Institutional Performance Agreements with Foresight 2020
  - Developed Annual Report on Progress
  - Currently Developing Initiative Aimed at Recruiting Non-Degree Completing Adults Back To Finish a Degree
- ★ Enhance Student Success
  - Aligning Assessment of Student Learning with Institutional Accreditation
  - Establishing Goals for Student Learning



# Foresight 2020 – Current Initiatives

- ★ Align with Kansas Workforce Needs
  - Working with the Department of Commerce and Department of Labor to Identify Critical Workforce Needs and Gaps and Implement the Engineering Expansion Program
  - Receive First Annual Report on University Research that Addresses Needs of the Kansas Economy
  - Reported on Percentage of Credentials or Degrees Awarded in Science, Technology, Engineering, and Mathematics
- ★ Ensure State University Excellence
  - Required Universities to Establish Aspirational Goals and Develop Benchmarks of Excellence in Comparison with Peer Institutions
  - Established a Council of Chief Research Officers



# State University Funding

- ★ Regents asked for a 1.8% HEPI increase to provide funding for the increase in operational costs (\$12.7m).
  - Applied to all universities and colleges in the Regents system
  - The Governor did not recommend funding.



# Student Financial Assistance

- ★ Regents asked for \$385,925 to redesign the old vocational grant into a career technical education grant that would bring the grant amount to \$500,000.
  - The Governor did not recommend funding.
- ★ Regents asked for \$543,182, a 2.6% increase in all student financial aid programs.
  - The Governor did not recommend funding.





# Student Financial Assistance

- ★ Regents asked for \$1,785,852 to backfill the loss of state and federal funds in the comprehensive grant program.
  - This grant program allows students to use this money at any four year Kansas public or private university.
  - The Governor recommended \$1 million in funding.



# Career Technical Education

- ★ Regents requested \$8 million to begin funding the new tiered technical education formula.
  - Tiered program was developed last year.
  - Creates uniform rates for funding of technical education at community and technical colleges
  - Provides incentives for increased production of a technical workforce
  - Governor recommended funding.



# KU Medical Loan Program

- ★ Regents requested supplemental funding for KU Medical Center's program that incents doctors to practice in rural areas (\$1.86m)
  - Maintains 120 loans per year
  - In the past, we have been able to sustain loans because doctors repaid loans rather than serve in rural underserved areas.
  - Governor recommended funding.



# KSU Veterinary Medicine

- ★ Regents requested \$5 million to expand the research and instructional capacity of the college to fulfill KSU's desire to be recognized as one of the top veterinary medicine programs in the nation.
  - KSU currently ranks in the lower half of all CVM research expenditures.
  - Governor recommended funding.



## Midwest Higher Education Compact Dues

- ★ Regents requested \$95,000 for the annual dues plus the \$5,462 that the state was in arrears due to cuts in 2010 and 2012.
  - Colleges and universities in Kansas participate in a number of programs offered by MHEC.
  - Governor did not recommend funding.



# Foundation Professors at KU

- ★ Regents requested \$3 million to enhance the ability of KU to attract and retain professors of the highest status.
  - KU believes that this will assist them in retaining AAU status, potentially increase ranking, and help fulfill the strategic plan.
  - Governor recommended funding.



## Pittsburg State University Polymer Research Project

- ★ Regents requested \$1 million to expand undergraduate and graduate programs to produce needed scientists.
  - PSU has been awarded 15 patents for their polymer research.
  - Governor recommended \$500,000 in FY 13 and \$1 million in FY 14.



## Kansas Academy of Math and Science

- ★ Regents requested \$203,200 to expand the program from 25 to 40 students.
  - The Fort Hays State University program provides an outstanding math and science curriculum to the best and brightest math and science students in Kansas.
  - Almost all students continue at a Kansas university or college.
  - Governor recommended funding.





## Workforce Development at Emporia State University

- ★ Regents requested \$250,000 for Nursing informatics degree, \$250,000 for E-commerce degree, and \$250,000 for Sustainability degree to meet workforce needs.
  - None of these were recommended for funding by the Governor.



Thank you for your support of  
higher education in Kansas!



## One Last Issue - Kan-ed

- ★ Cut \$4 million from budget which included a plan to phase out content services by FY 13
- ★ Responded to Concerns Expressed in FY 11 Legislative Session
- ★ Reported to Kan-ed Interim Study Committee and Worked with Legislative Post Audit
- ★ Proposing a new model which includes moving Internet-only users to local provider and higher bandwidth and video users to KanREN
- ★ Each school and library will file their own e-rate application and all Kan-Ed members will pay for a portion of their services
- ★ Will need 18 months to transition to a new system