

Approved: February 4, 2010

Date

MINUTES OF THE HOUSE GOVERNMENT EFFICIENCY AND FISCAL OVERSIGHT  
COMMITTEE

The meeting was called to order by Chairman Jim Morrison at 3:34 p.m. on February 3, 2010, in Room 546-S of the Capitol.

All members were present except:

Representative Sean Gatewood- excused  
Representative Judy Loganbill- excused  
Representative Charlie Roth- excused

Committee staff present:

Julian Effird, Kansas Legislative Research Department  
Renaë Jefferies, Office of the Revisor of Statutes  
Gary Deeter, Committee Secretary

Conferees appearing before the Committee:

Roger Werholtz, Secretary, Kansas Department of Corrections  
Russ Jennings, Commissioner, Kansas Juvenile Justice Authority  
Jennifer Pealer, Assistant Commissioner for Research and Program Development, Kansas Juvenile Justice Authority

Others attending:

See attached list.

The minutes for the February 2 meeting were approved. (Motion by Representative Neufeld and seconded by Representative Ruiz)

Roger Werholtz, Secretary, Kansas Department of Corrections, presented information regarding the Level of Services Inventory Revised (LSIR), a standardized assessment instrument that identifies the level of an offender's risk for recidivism (Attachment 1). He noted that the probability of an offender re-offending is not related to the seriousness of the crime, but to other factors that can be identified by the LSIR. Using this assessment tool, the Department can provide appropriate services to minimize recidivism. Since this instrument has been utilized, parole revocations have been reduced by over 50% and repeat felony convictions have been lowered by 36%. When the LSIR was introduced to community corrections services in 2006, the recidivism rate was lowered by 26%. Mr. Werholtz said that legislation has been introduced to increase court fees so that the LSIR can be used state-wide. He explained that the additional revenue is needed to train staff to use the LSIR, which is a proprietary instrument.

Responding to questions, Mr. Werholtz replied that:

- The LSIR does not provide accurate information after an offender has adjusted to the prison system.
- The LSIR does not create profit for the Department, but it does mitigate a rise in the prison population and thus provides cost avoidance. He will later provide an estimate of how much money is saved by

## CONTINUATION SHEET

Minutes of the House Government Efficiency and Fiscal Oversight Committee at 3:34 p.m. on February 3, 2010, in Room 546-S of the Capitol.

using the LSIR.

- The Department operates several industries: building home furniture, office furniture, and cabins and manufacturing clothing and highway paint. Several private industries also operate within the prison and employ prison labor. He noted that legislation has been proposed to allow the various industries under the aegis of the Department to sell on the open market.

Russ Jennings, Commissioner, Kansas Juvenile Justice Authority, introduced Jennifer Pealer, Assistant Commissioner for Research and Program Development, who presented material showing the effectiveness of the Youthful Level of Service Case Management Inventory (YLS/CMI), an age-appropriate parallel to the LSIR ([Attachment 2](#)). She explained that the 42-item, 8-domain instrument provides an empirically-based assessment of what programs will help a juvenile offender stay out of trouble when released. She stated that the tool works best when applied after adjudication (conviction) and before disposition (sentencing). Responding to a question, she said the assessment is not designed for the general youth population and will not identify sex offenders. She declined to suggest ways to have the assessment used in public schools. She replied that some research is being done to identify cost savings, but the various data have not been collated yet. She noted that funding that is accurately targeted will get results, but more funding without a clear focus would be wasted.

Commissioner Jennings summarized the effectiveness of the YLS/CMI, commenting that the youth offender population was 450 when the tool was implemented and is now down to 327. He also noted that posting statistics by court district on the Authority website has prompted friendly competition among districts, resulting in improving services to youth offenders.

The meeting was adjourned at 4:40 p.m. The next meeting is scheduled for February 4, 2010.

**HOUSE  
GOVERNMENT EFFICIENCY AND FISCAL OVERSIGHT  
COMMITTEE**

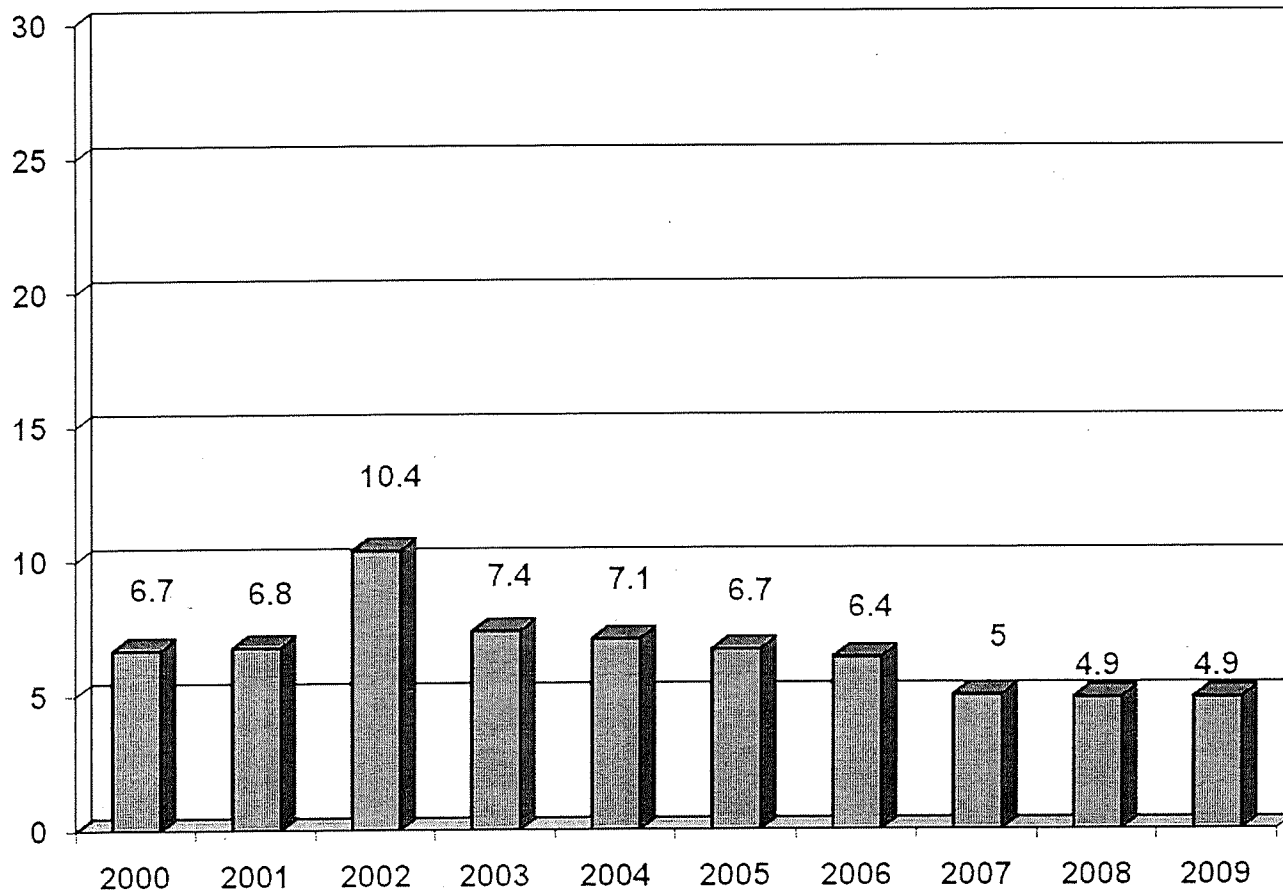
**GUEST LIST**

**DATE:** FEBRUARY 3 2010

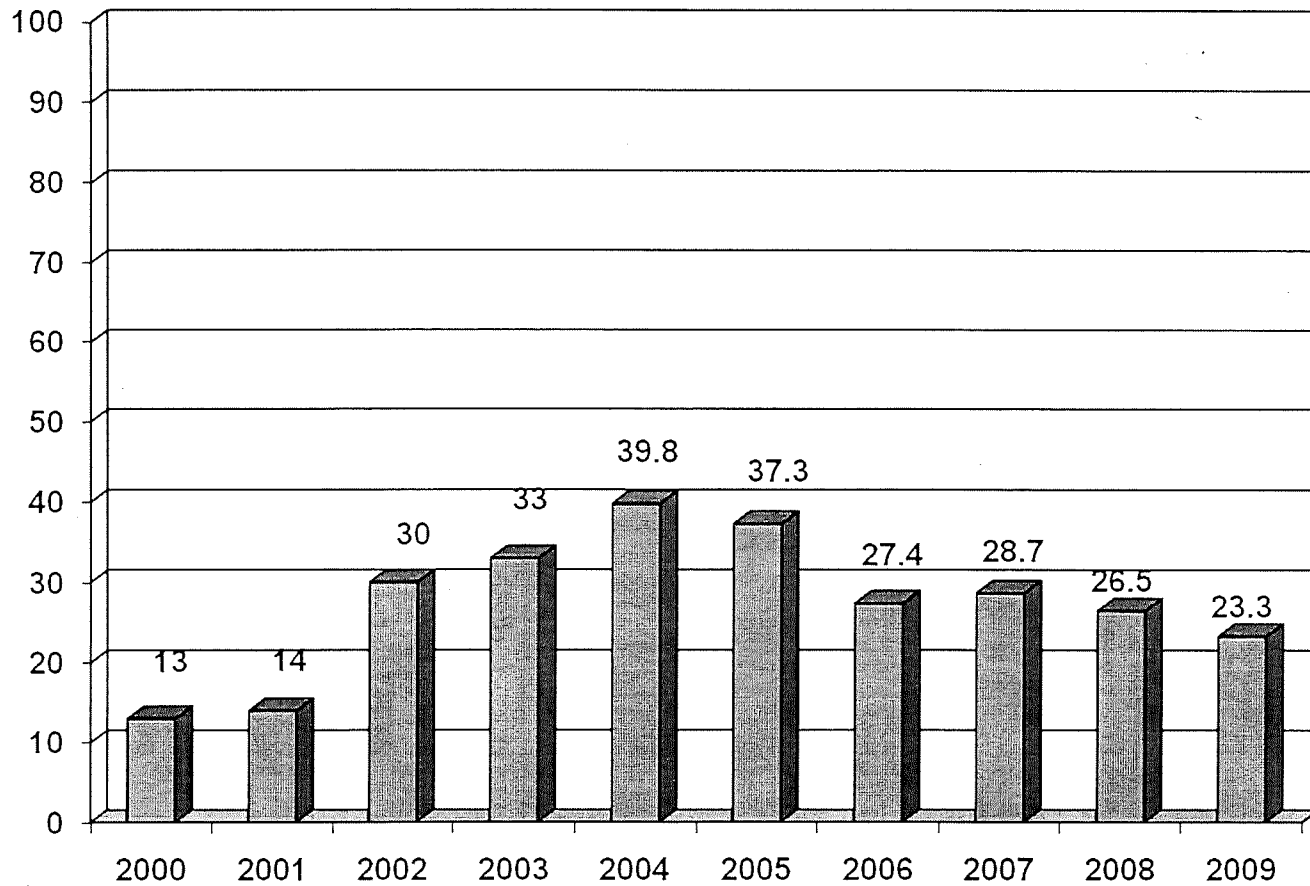
NAME	REPRESENTING
Russ Jennings	JJA
Jennifer Pealer	JJA
Kendra Hansen	Hein Law Firm
Chris Glastad	Federico Consulting
JEREMY S BARCLAY	KDOC
ROGER WERHOLTZ	KDOC
Isaac Guterstoh	—

# Percent Revoke + Incarceration Rates\* by Year: Court Services

Attachment 1  
GEFO 2-3-10



### Percent Revoke + Incarceration Rates\* by Year: Community Corrections



TESTIMONY ON YOUTHFUL LEVEL OF SERVICE  
CASE MANAGEMENT INVENTORY TO THE  
HOUSE GOVERNMENT EFFICIENCY AND OVERSIGHT COMMITTEE

BY DR. JENNIFER PEALER  
KANSAS JUVENILE JUSTICE AUTHORITY

FEBRUARY 3, 2010

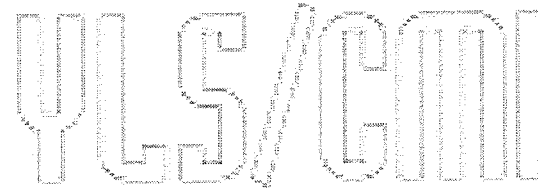


J. Russell Jennings  
Commissioner  
785-296-0042  
[rjennings@jja.ks.gov](mailto:rjennings@jja.ks.gov)

Attachment 2  
GEFO 2-3-10

# Youthful Level of Service Case Management Inventory

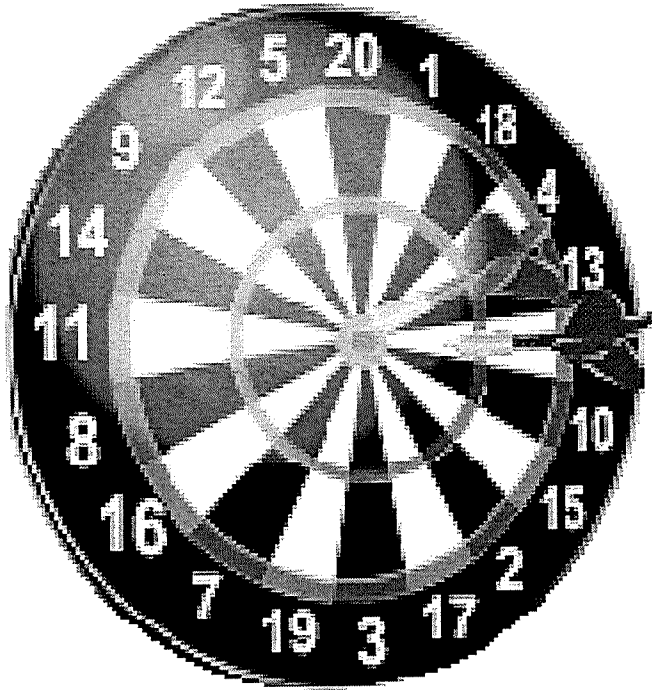
- Empirically derived risk/needs instrument
  - Based on research predicting recidivism
  - Examines known risk factors



Prior and Current Offenses  
Family  
Education  
Peers

Substance Abuse  
Leisure  
Personality  
Attitudes

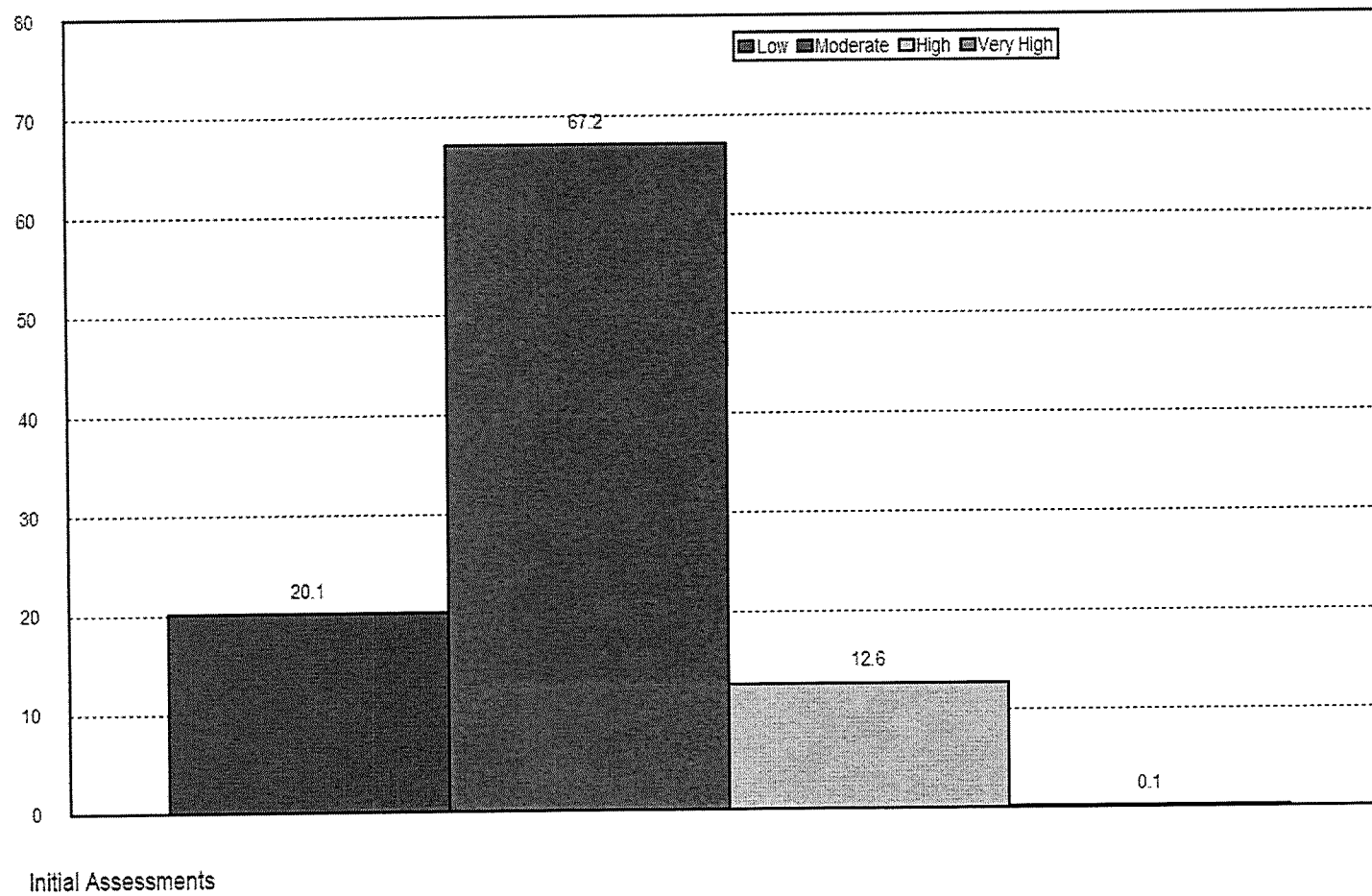
# Why the YLS/CMI?



- Economical mechanism to increase public safety
  - Identifies which youth need interventions
- Provides basis for making decisions
  - Placement decisions
    - (Who to work with)
  - Programming decisions
    - (What factors to target)
- Helps track changes in the youth

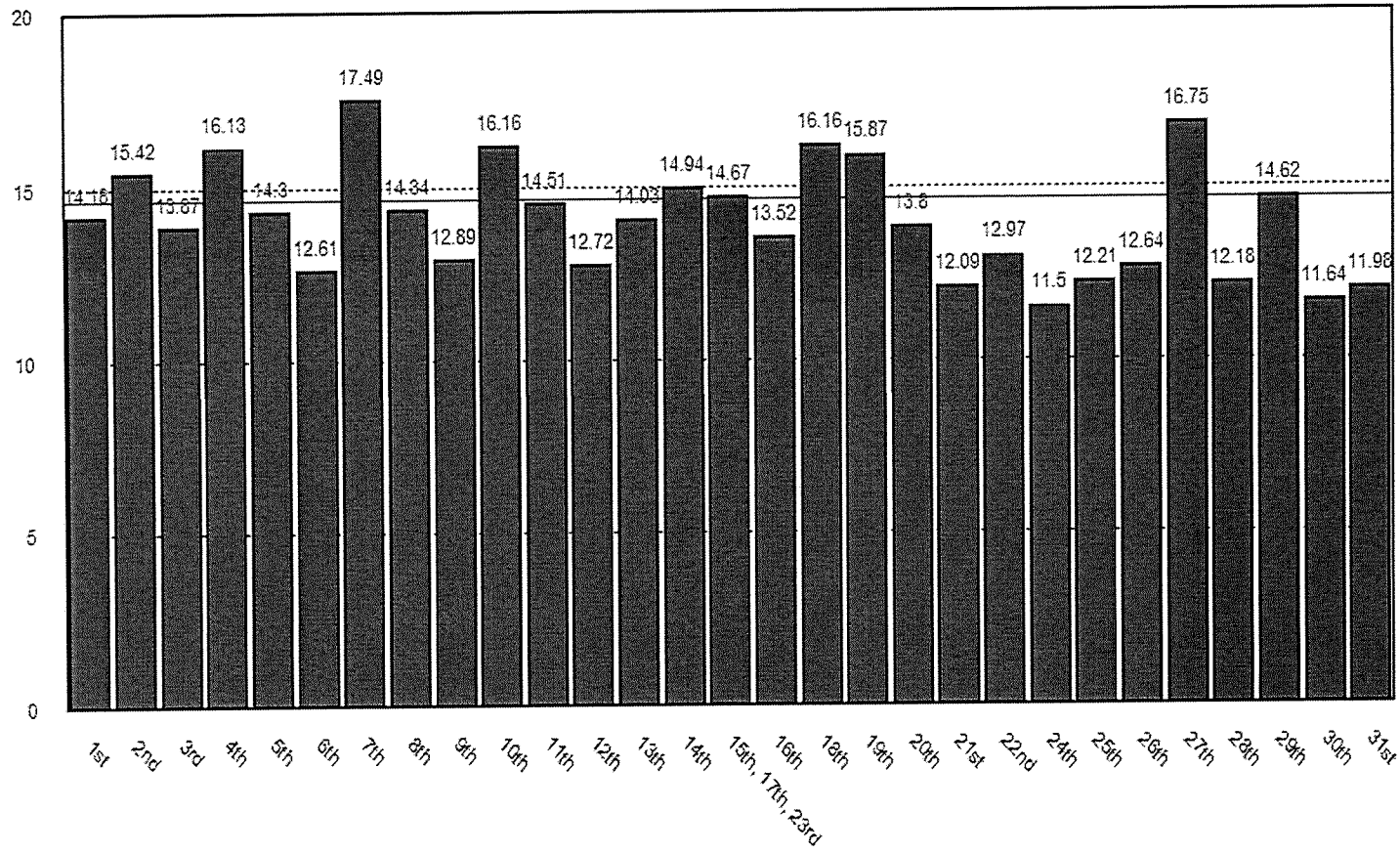


# Percentage of Youth Within Each Total YLSCMI Category



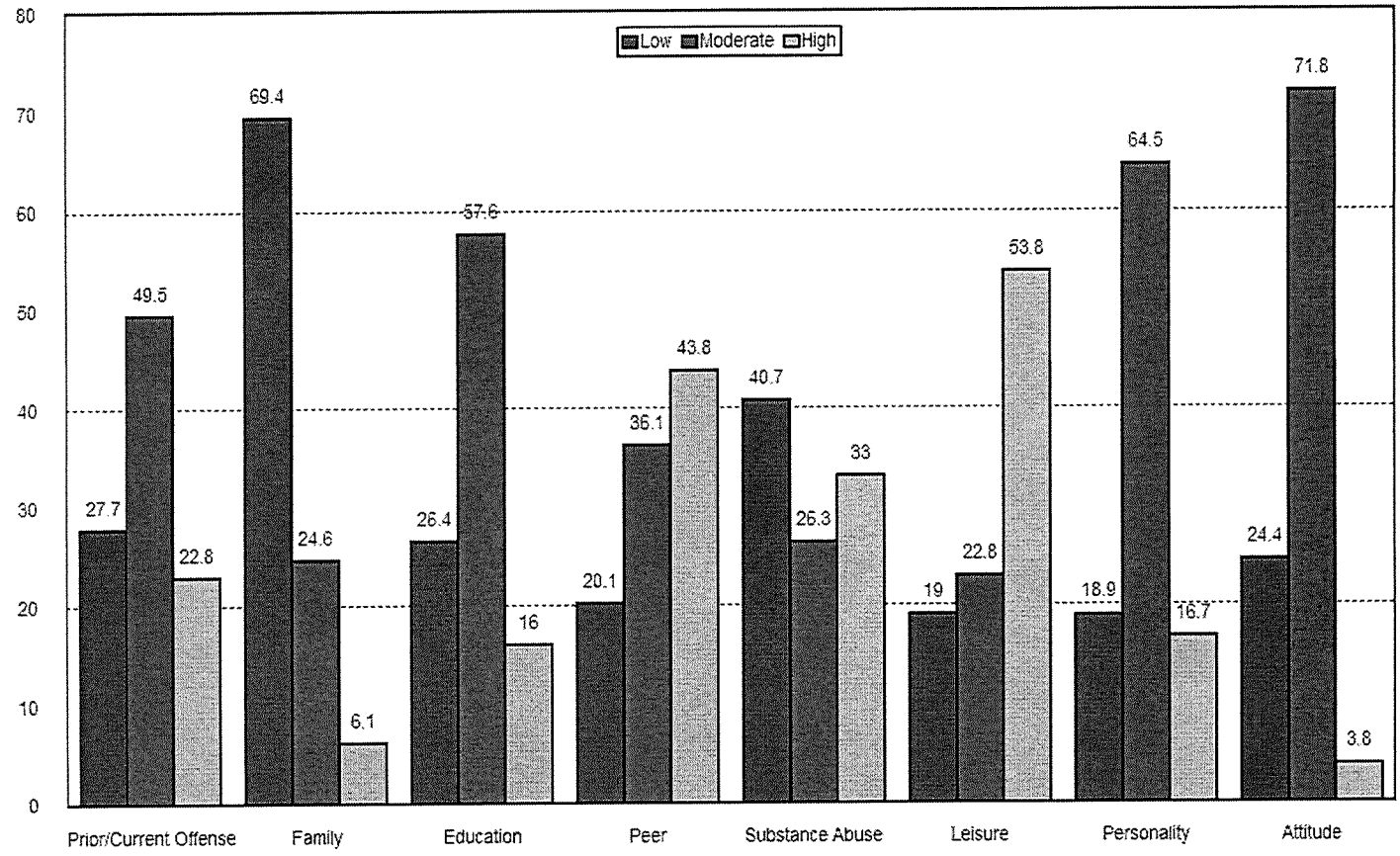
Low (0-8); Moderate (9-22); High (23-34); Very High (35-42)

# Average YLSCMI Score by Judicial District



Initial Assessments

# Percentage of Youth Within Each YLSCMI Category



Initial Assessments

- Realizing the benefits of having a standardized instrument to guide supervision practices, the Kansas Juvenile Justice Authority implemented the Youthful Level of Service Case Management Inventory (YLS/CMI) in January 2007.
- The YLS/CMI is a standardized risk and needs instrument that helps agencies predict which youth is more likely to reoffend. The instrument has 42 items measuring the known predictors of recidivism – criminal history, family issues, education, peers, substance abuse, leisure activities, personality (skill deficits) and attitudes related to criminal behavior.
- The YLS/CMI is an instrument that helps supervision officers increase public safety by assisting in the prediction of those youth who require more interventions to reduce recidivism. The instrument informs supervision officers of which youth should be provided more intensive supervision and programming in an effort to reduce the chances of offending. That way, the officers can focus more time and energy on the youth who need and require it.
- Once we have determined who we should be working with, the YLS/CMI will also tell the officers what factors they should be targeting to reduce recidivism. Research has shown that if our goal is to reduce offending then there are certain factors that we should focus on and others that we should not spend a lot of time on. Therefore, the YLS/CMI will tell us which factors are driving the youth's risk and then we can provide interventions/programs/services to reduce these criminogenic needs.
- Lastly, the YLS/CMI helps agencies and supervision officers keep track of the changes in the youth. When reassessments are completed, we can determine if the supervision and interventions are working to reduce the criminogenic needs of the youth and correspondingly reduce the level of risk for reoffending.
- As previously mentioned, the YLS/CMI was implemented throughout the state in 2007. Approximately 20 percent of the youth on Juvenile Intensive Supervised Probation and Case Management score as low risk. That would mean that we have some youth who, based on the risk principle, do not need this level of intervention and would best be served under different agencies. Sixty-seven percent of the youth scored as a moderate risk for reoffending and 12 percent scored as high risk for reoffending.
- The YLS/CMI provides for an overall risk score ranging from 0 to 42. The average YLS/CMI score across the state is 14.62. Most of the districts are within two to three points of the average.
- The YLS/CMI also provides us with information on the youth's criminogenic needs. We are able to determine if the youth is scoring low, moderate or high need in the eight domains. From the data, it would appear that we need interventions to target the youth's skill deficits and address antisocial attitudes while providing them with prosocial leisure activities.