

MINUTES OF THE HOUSE HIGHER EDUCATION COMMITTEE

The meeting was called to order by Chairman Terrie Huntington at 1:30 p.m. on January 20, 2009, in Room 786 of the Docking State Office Building.

All members were present except:

Representative Joe McLeland- excused

Committee staff present:

Mary Galligan, Kansas Legislative Research Department
Jennifer Horchem, Kansas Legislative Research Department
Renaë Jefferies, Office of the Revisor of Statutes
Kay Scarlett, Administrative Assistant

Conferees appearing before the committee:

Reginald L. Robinson, President & CEO, Kansas Board of Regents

Others attending:

See attached list.

There were no requests for introduction of committee bills.

Reginald L. Robinson, President & CEO, Kansas Board of Regents, provided an overview of the higher education system in Kansas and highlighted the board's activities since the conclusion of the 2008 Legislative Session, including:

- State University Task Force reviewing admission requirements
- CEO searches at K-State, PSU, and KU
- Ongoing work by the Technical Education Authority
- Campus security reviews & employee background checks
- Increased Fall 2008 enrollment at all six state universities
- Ongoing work by the P-20 Council
- Building a public agenda for Kansas higher education
- Sharpened focus on campus efficiencies.

He reviewed the Governor's recommended budget cuts for the state's public higher education system. Overall, higher education funding would be reduced by a net total of \$120.3 million (\$24.94 million in FY 2009 and \$95.34 million in FY 2010). (Attachment 1)

The meeting was adjourned at 2:15 p.m. The next meeting of the House Higher Education Committee is scheduled for January 21, 2009.

HOUSE HIGHER EDUCATION COMMITTEE GUEST LIST

DATE January 20, 2009

NAME	REPRESENTING
Peggy Robinson	KBOR
David Boucher	DFBL
HOWARD SMITH	PITTSBURGH STATE UNIVERSITY
JOHN DOUGHERTY	ESU
Grady Denton	DOE
Aaron Otto	Governor's Office
Matt Manda	The Center Group
DICK CARTER	Johnson County Comm. Coll
TERKY FORTYTH	KUEA
Berend Koops	Hein Law Firm
John Berlin	PITTSBURGH - SMITH
SUE PETERSON	K-STATE
Wanda Funk	KS Assoc. COMMUNITY COLLEGE
LARRY BEES	KACC T
Debra Feideaux	FHSU
Donna Shank	Chair - KBOR

HIGHER EDUCATION UPDATE/OVERVIEW

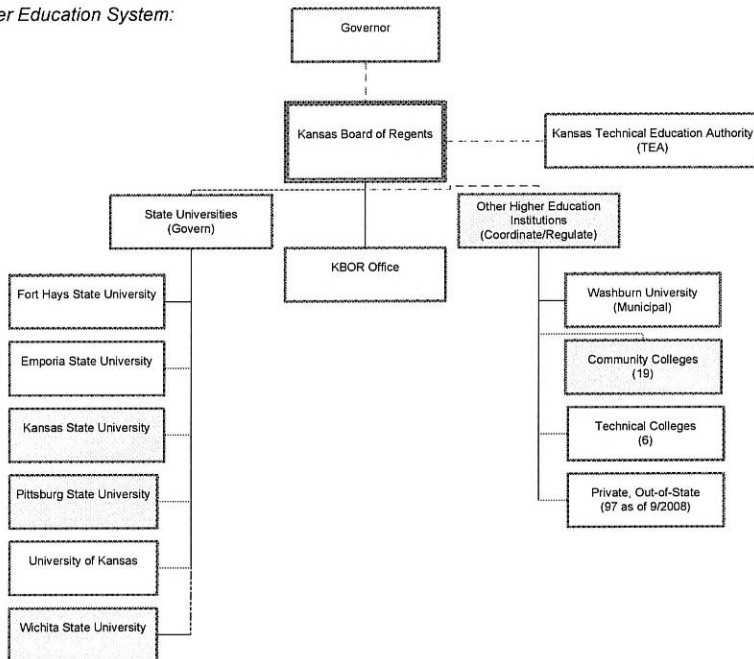
House Higher Education Committee

January 20, 2009

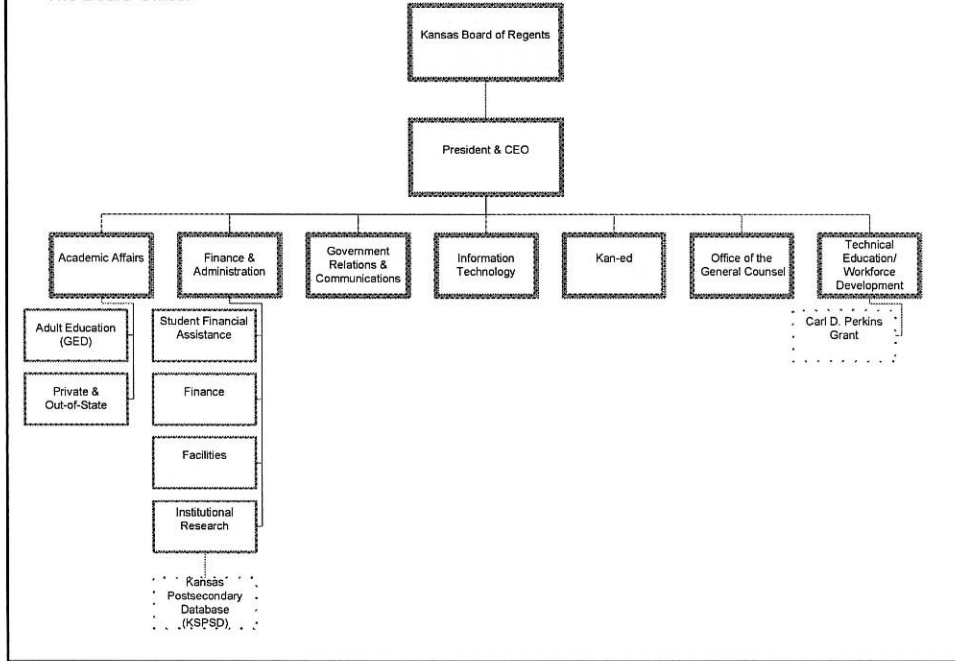
Reginald L. Robinson
President & CEO
Kansas Board of Regents



The Higher Education System:



The Board Office:



The 32 Public Higher Education Institutions:

State Universities	Municipal University	Community Colleges	Colleges	Technical Colleges
Emporia State University	Washburn University	Allen County Community College	Highland Community College	Flint Hills Technical College
Fort Hays State University		Barton County Community College	Hutchinson Community College	Manhattan Area Technical College
Kansas State University		Butler County Community College	Independence Community College	North Central Kansas Technical College
Pittsburg State University		Cloud County Community College	Johnson County Community College	Northwest Kansas Technical College
University of Kansas		Coffeyville Community College	Kansas City Kansas Community College	Salina Area Technical College
Wichita State University		Colby Community College	Lafayette Community College	Wichita Area Technical College
		Cowley County Community College	Neosho County Community College	
		Dodge City Community College	Pratt Community College	
		Fort Scott Community College	Seward County Community College	
		Garden City Community College		

***SINCE THE CONCLUSION OF THE
2008 LEGISLATIVE SESSION...***



- State University Admissions Task Force
- CEO searches at K-State, PSU, and KU
- Ongoing work by the Technical Education Authority
- Campus security reviews & employee background checks
- Increased Fall 2008 enrollment at all six state universities
- Ongoing work by the P-20 Council
- Building a public agenda for Kansas higher education (5 strategic areas)
- Sharpened focus on campus efficiencies

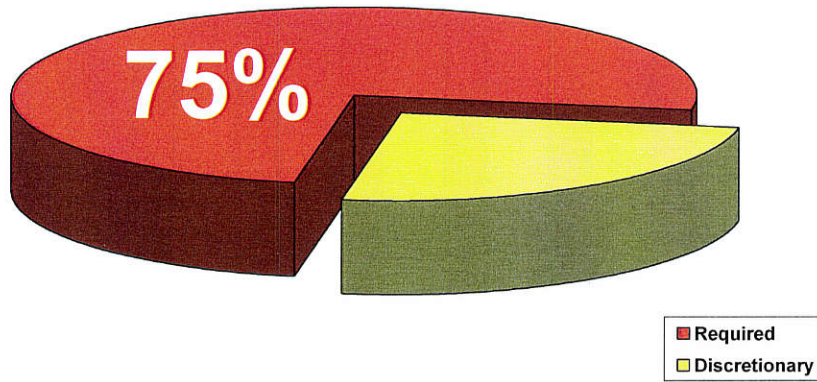


Continuing to Meet the State's Workforce Needs:

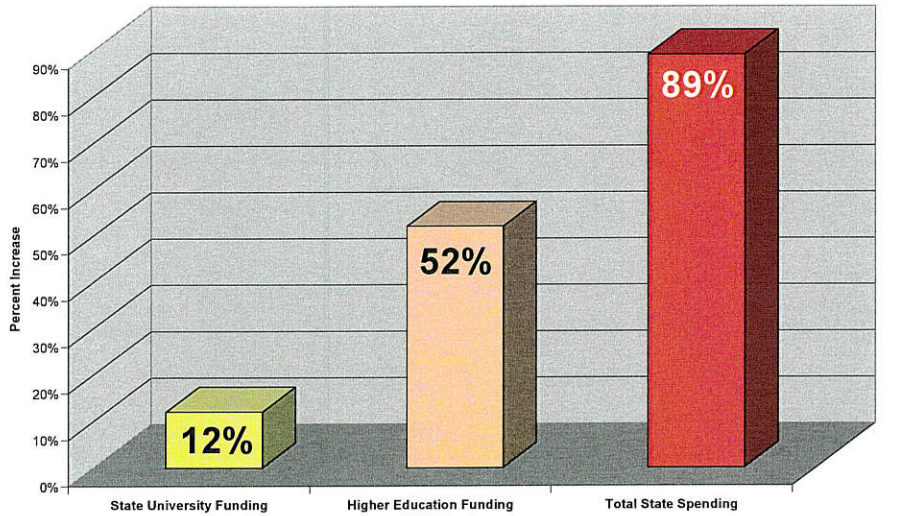
- **NURSES:** In 2006, the Legislature approved the Board's 10-year, \$30 million nursing shortage initiative which has since attracted national attention. In its first year, the program has, among other things, increased nursing school admissions by 507 students – exceeding the Legislature's goal by 103%.
- **TEACHERS:** In 2007, the Legislature worked with the Board to improve the state's teacher service scholarship programs which meant an additional 215 students (an 87% increase) received teacher scholarships last year.
- **PHARMACISTS:** In 2008, the Legislature helped to address the state's pharmacist shortage by enhancing programs in Lawrence and Wichita resulting in the addition of 85 new pharmacy students annually.
- **ENGINEERS:** ?



The State Budget: Required vs. Discretionary Spending

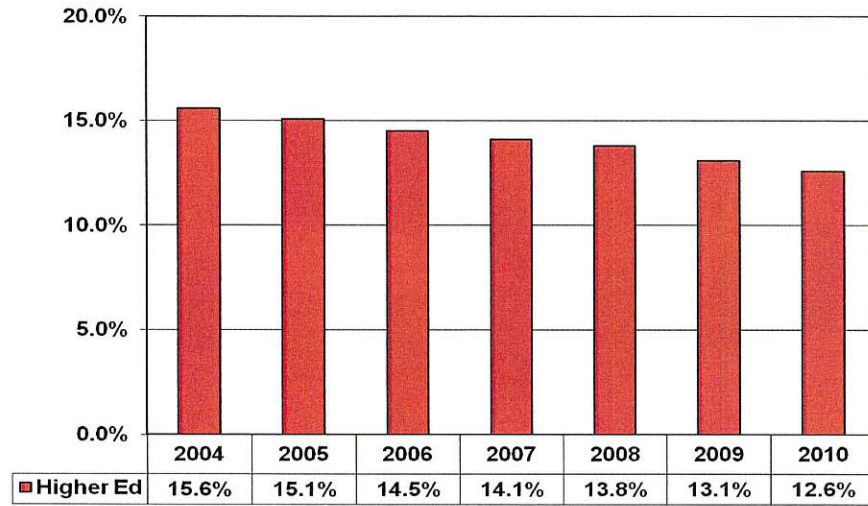


GROWTH IN STATE SPENDING (FY 1987 - FY 2007)*

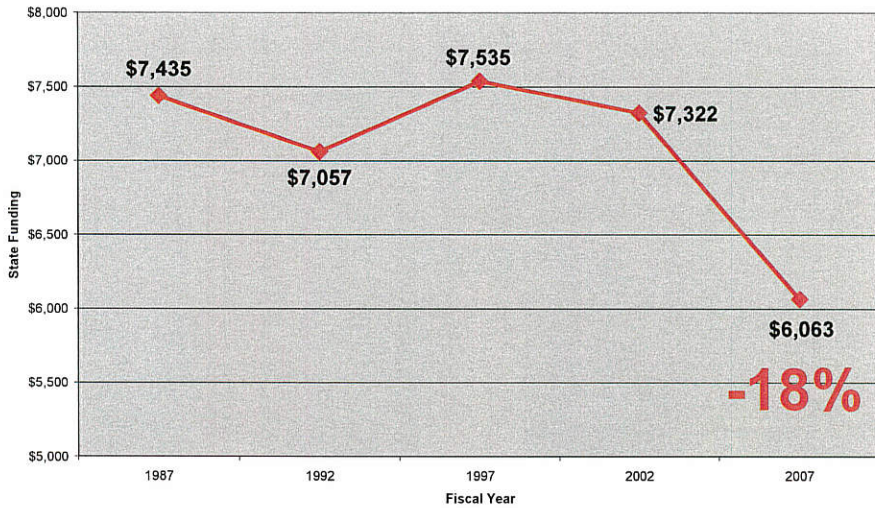


*Calculated For Inflation (CPI)

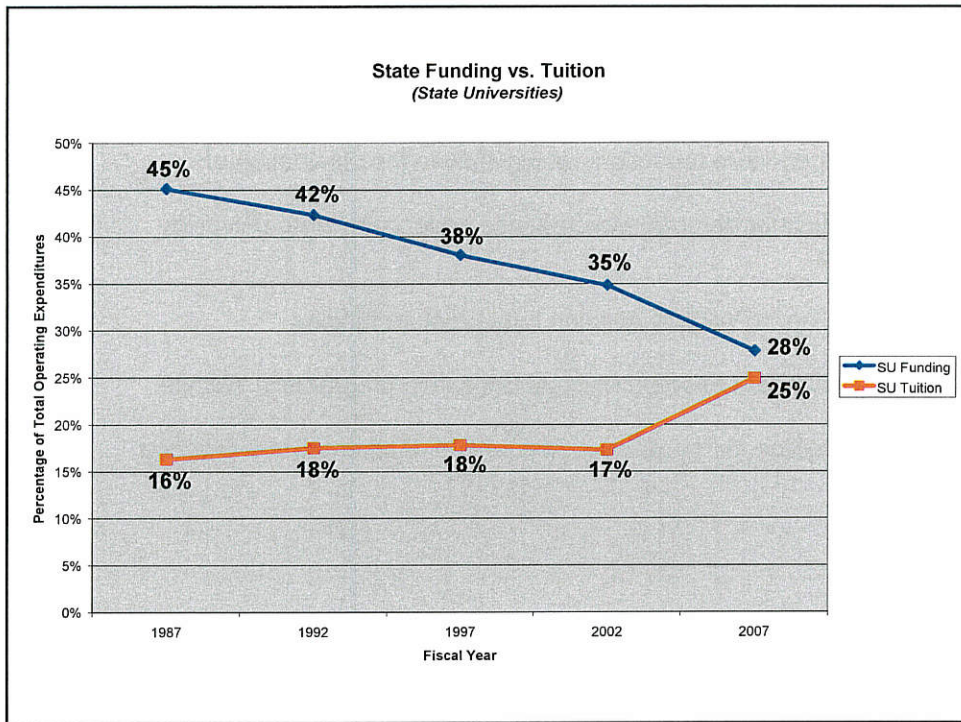
Governor's Recommendation Higher Education Share of SGF Expenditures:



**State Support Per FTE State University Student
(FY 1987 - FY 2007)***



*Calculated For Inflation (HEPI)



The FY09 & FY10 Budget Picture:

The Governor has recommended the following cuts for the state's public higher education system:

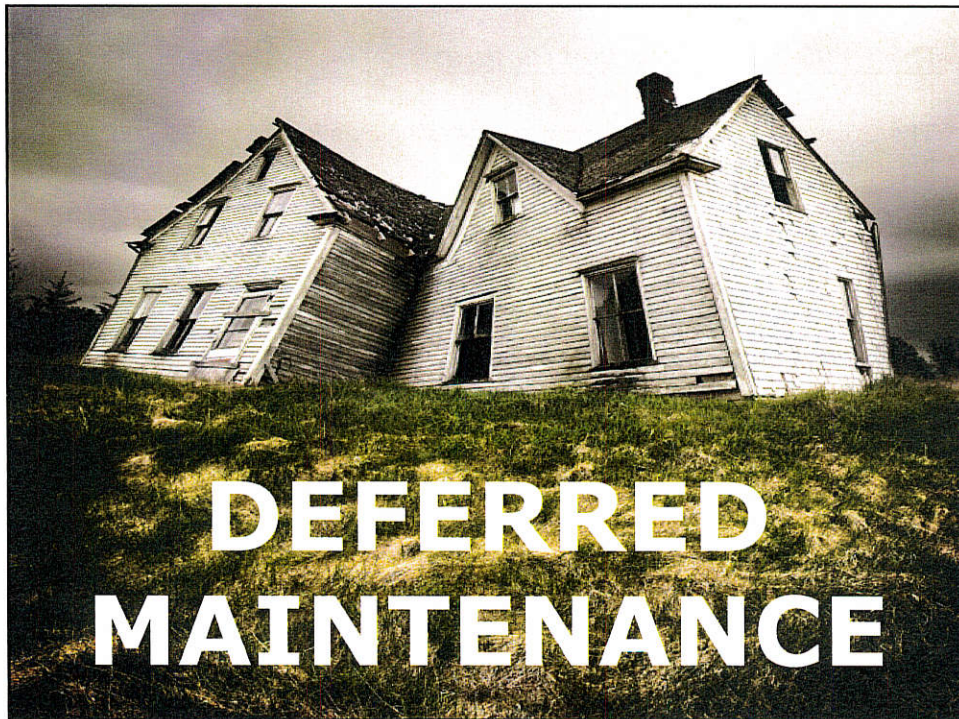
- A 3% budget cut in FY 2009 which equates to a reduction of \$24.3 million.
- A 7% (3% in FY 2009 and 4% in FY 2010) budget cut in the FY 2010 operating budget which equates to a reduction of \$56.3 million.
- A total of \$20.1 million in program and capital expenditure reductions.
- Overall, higher education funding would be reduced by a net total of \$120.3 million (\$24.94 million in FY 2009 and \$95.34 million in FY 2010).



Program & Capital Expenditure Reductions:

The Governor has recommended a total of \$20.1 million in program and capital expenditure reductions which include the elimination of:

- \$1.3 million for deferred maintenance projects on state university campuses.
- \$2.5 million for Wichita Aviation Infrastructure funding.
- \$2.5 million for Graduate Medical Education programs in Wichita.
- \$1.008 million for the Kansas Academy of Mathematics & Science.



Continued Deferred Maintenance Progress:

- In 2006, the state universities faced a daunting and increasingly dangerous maintenance backlog of \$663 million. At the same time, the state's community colleges, technical colleges, and Washburn were facing a maintenance backlog of \$172 million.
- The 2007 Legislature approved a 5-year funding plan which will provide: \$90 million in state funds and \$44 million in interest earnings to the state universities; tax credits that could generate up to \$158 million in private contributions to the 32 public higher education institutions; and \$100 million in interest-free bonding authority for the community colleges, technical colleges, and Washburn.
- In the Fall of 2008, an updated facilities audit indicated that the state universities now face a maintenance backlog of \$825 million, a 24% increase since the 2006 study.



- The increase can be attributed to a significant increase in construction inflation, the increased age of the campus buildings, and the continued and chronic under-funding of annual maintenance needs.
- Since the passage of the 5-year plan, the Joint Committee on State Building Construction has approved 91 state university maintenance projects. To date, 37 projects have been initiated, of which 10 have been completed, while 27 are currently underway. If deferred maintenance funding is not cut for Fiscal Year 2010 (the third year of the 5-year plan), 8 additional projects are scheduled to be completed and 10 additional projects are scheduled to begin.
- For the state universities, the 5-year plan, if fully-funded, will address approximately 31% of the \$825 million maintenance backlog that exists among the 442 state-owned "mission critical" academic buildings.



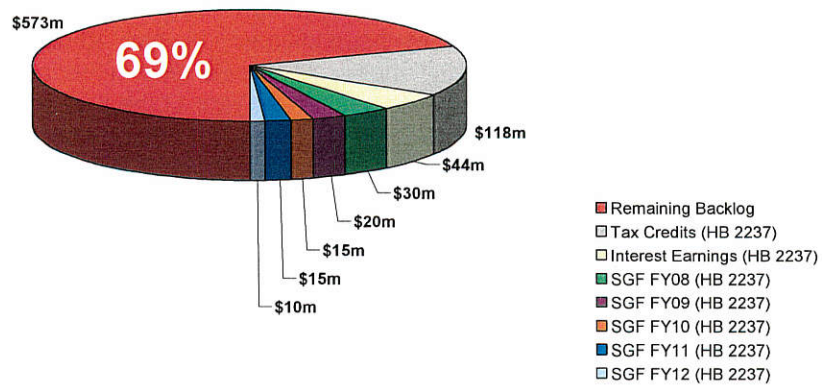
Backlog:

Kansas State University	\$290.6 million
The University of Kansas	\$226 million
The University of Kansas Medical Center	\$90.5 million
Pittsburg State University	\$67 million
Fort Hays State University	\$51 million
Emporia State University	\$50.6 million
Wichita State University	\$49.3 million

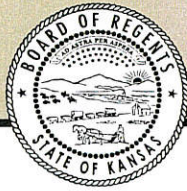
TOTAL: \$825 million



Deferred Maintenance Progress
State Universities



Total Backlog = \$825 million



"The Kansas Board of Regents shall pursue measurable continuous improvement in the quality and effectiveness of the public postsecondary educational system in Kansas, while expanding participation for all qualified Kansans. To achieve that mission, the Board will demand accountability, focus resources, and advocate powerfully."

www.kansasregents.org