

Approved: 02/04/08
Date

MINUTES OF THE HOUSE VETERANS MILITARY AND HOMELAND SECURITY COMMITTEE

The meeting was called to order by Chairman Don Myers at 1:30 PM on January 30, 2008 in Room 784 of the Docking Building.

All members were present except:

Bob Bethell - excused
Dan Johnson - excused
Kenny Wilk - excused

Committee staff present:

Scott Wells, Revisor of Statutes Office
Athena Andaya, Kansas Legislative Research Department
Art Griggs, Revisor of Statutes Office
Jill Shelley, Kansas Legislative Research Department
Karen Gross, Legislative Assistant

Conferees appearing before the committee:

Major General Tod M. Bunting, Adjutant General, Kansas Director of Homeland Security and Emergency Management

Others attending:

See attached list:

Chairman Myers introduced Gabby Skillings and her father, Ben Skillings. Gabby and other members of the Kansas Gifted, Talented and Creative Program were visiting the Capitol and shadowing legislators on January 30.

Moved by Representative Kelsey, seconded by Representative Crow for approval of minutes of the House Committee on Veterans, Military and Homeland Security held January 24, 2008 and January 29, 2008. The motion carried.

The Chairman called for bill introductions. There were none.

Chairman Myers recognized Major General Tod Bunting who gave a power-point presentation focusing on key lessons learned from recent disasters in Kansas and the mission of the Kansas National Guard. (Attachment 1)

Meeting adjourned

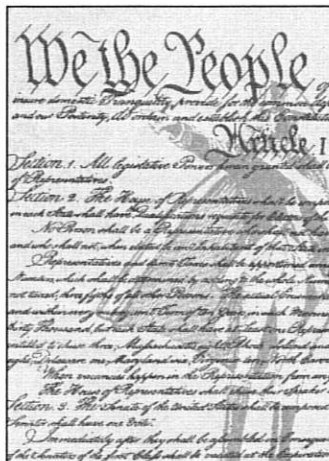


**Major General Tod M. Bunting
Adjutant General, Kansas
Director, Homeland Security &
Emergency Management**

National Guard Chartered in the Constitution

"To provide for calling forth the militia to execute the laws of the union, suppress insurrections, and repel invasions"

"Congress to organize, arm and discipline... States to appoint officers and train to discipline prescribed by Congress"



Organized August 30, 1855

Missions

- Homeland Security for Territorial Kansas
- Border Conflicts between Free-Staters & Pro-Slavery Forces
- Defending against Indian Raids



Hiram J. Strickler
Appointed: August 31, 1855

Dual Mission

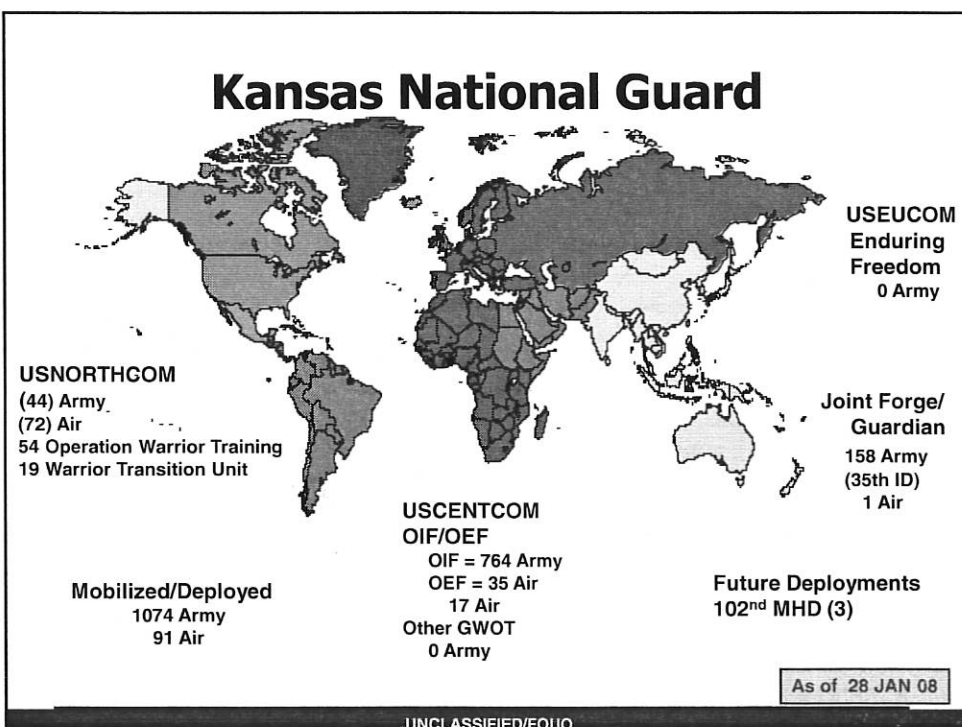
Federal

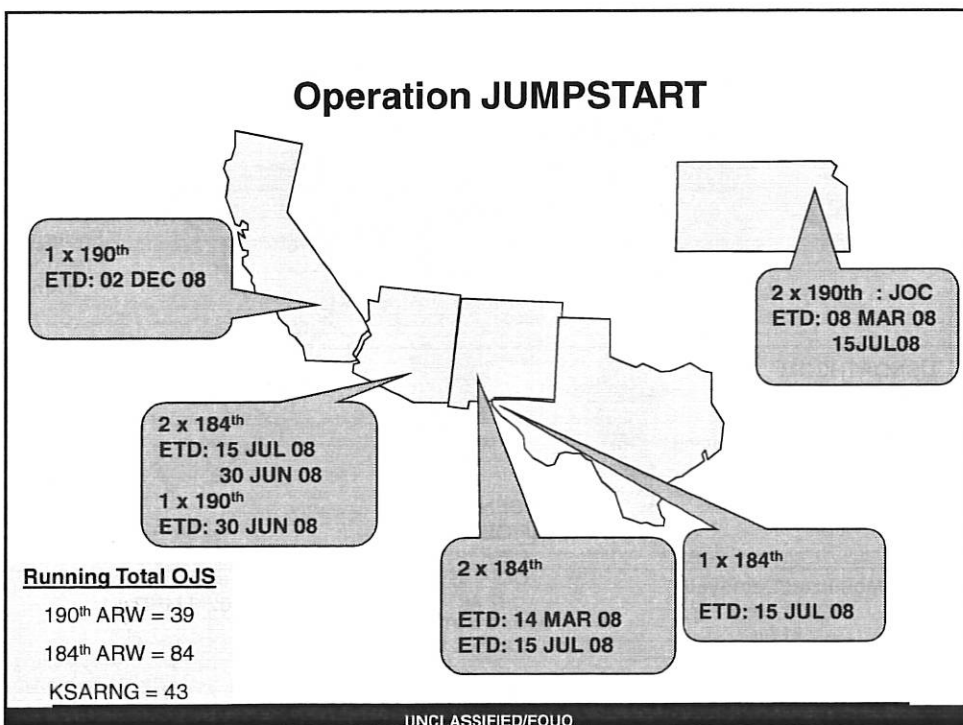
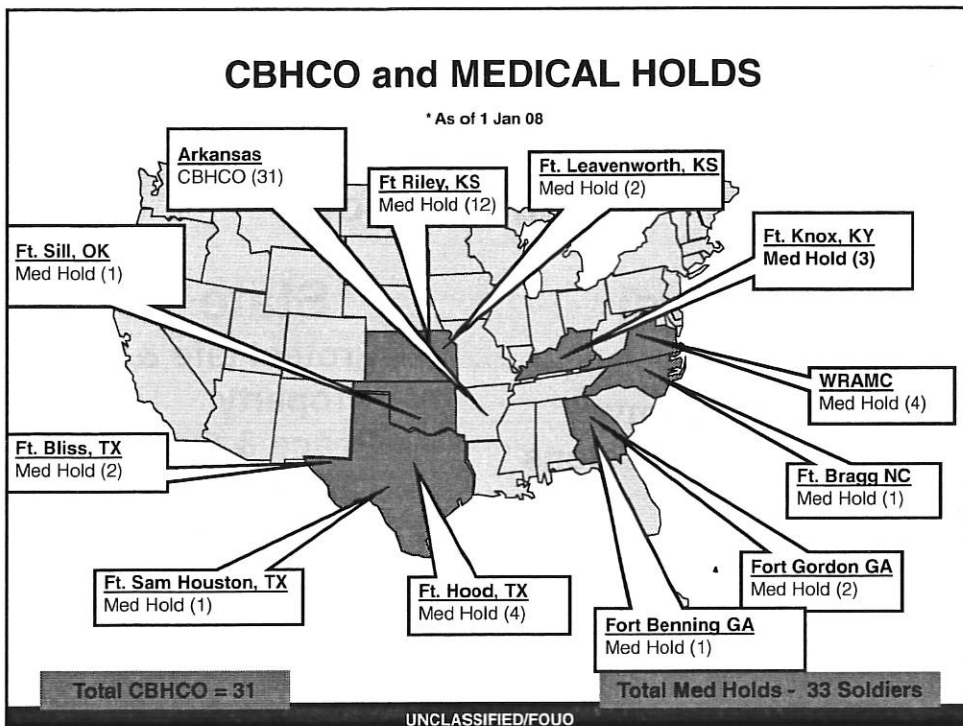
- ◆ Train for Wartime
- ◆ Support Army & Air Force Missions


State

- ◆ Protect Life & Property
- ◆ Peace & Order
- ◆ Civil Defense


Kansas National Guard







35th Infantry Division
"Santa Fe Division"



Provide a Safe and Secure Environment and promote a transition of responsibilities to civilian authorities.



“Traditional Guard” Training

- ◆ 2 days/month Unit Training Assemblies
- ◆ 15 Annual Training Days
- ◆ 32-48 Additional Training Periods
- ◆ Extra Days for exercises & deployments in support of Active Duty missions



27% of Kansas Military Equipment is either currently deployed or left in Theatre!



184th Intelligence Wing
Network Operations Security Center



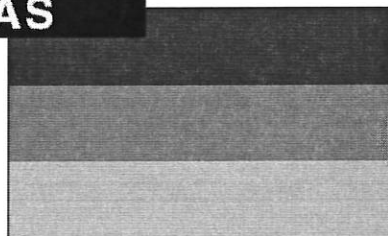
**Partnership
Established
In 2003**

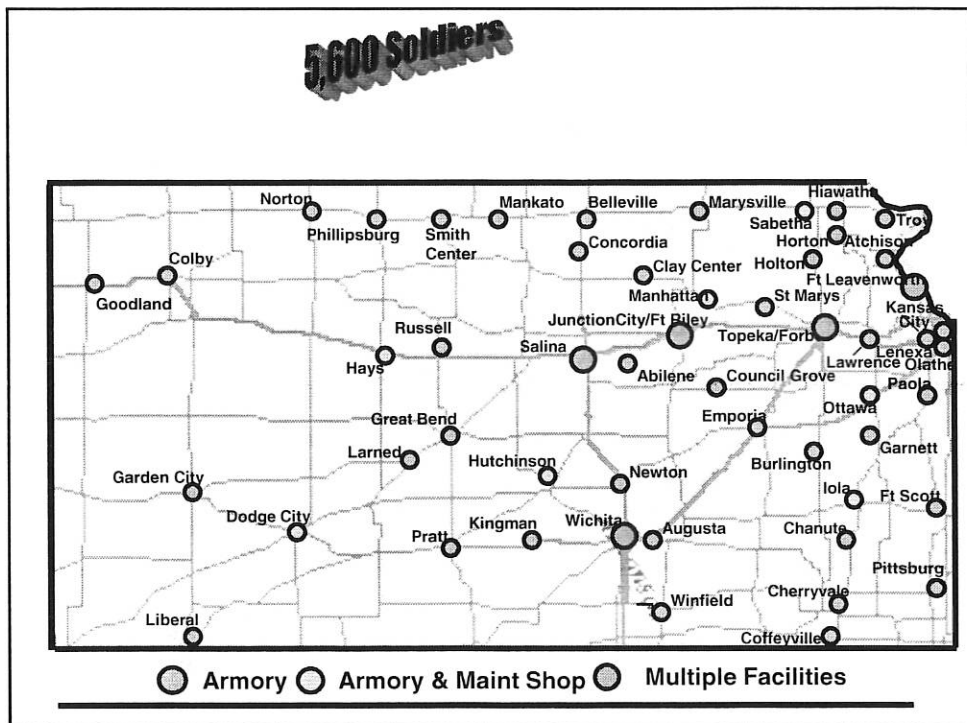
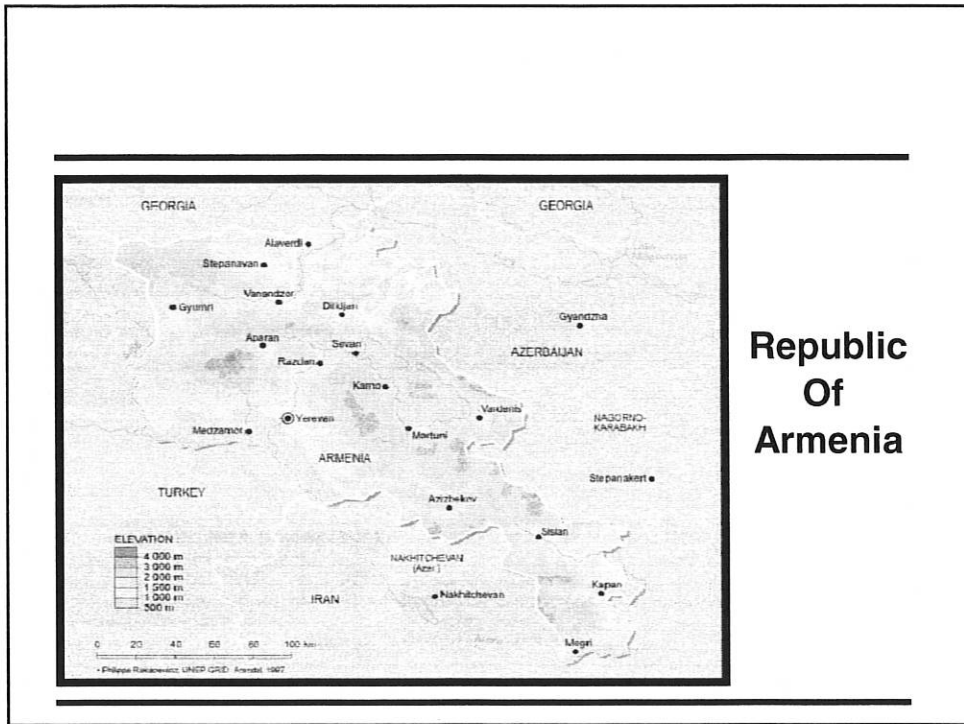


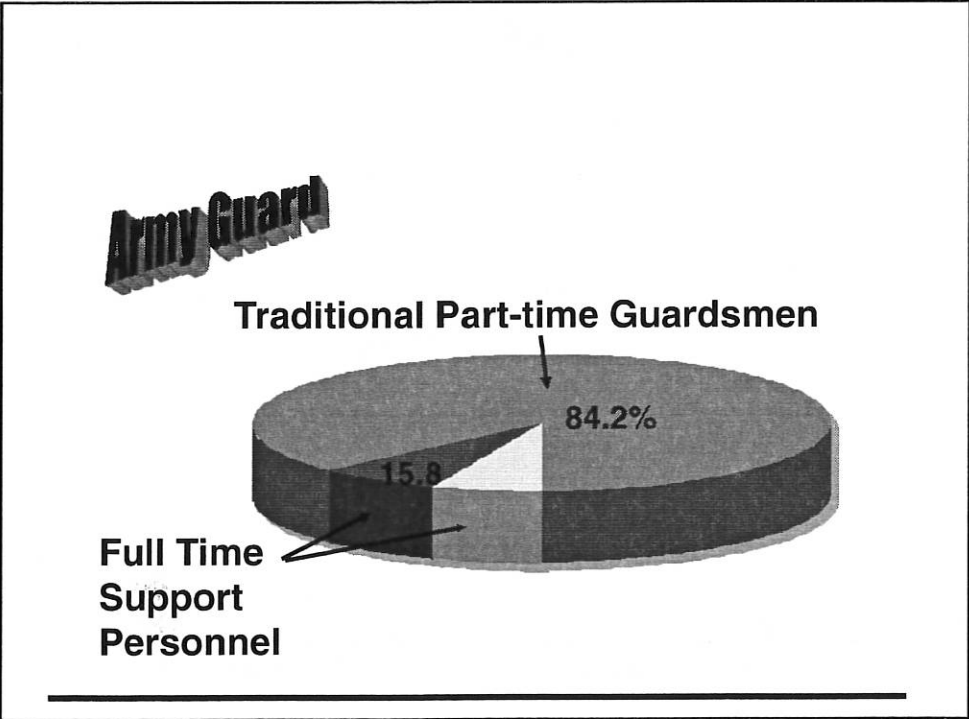
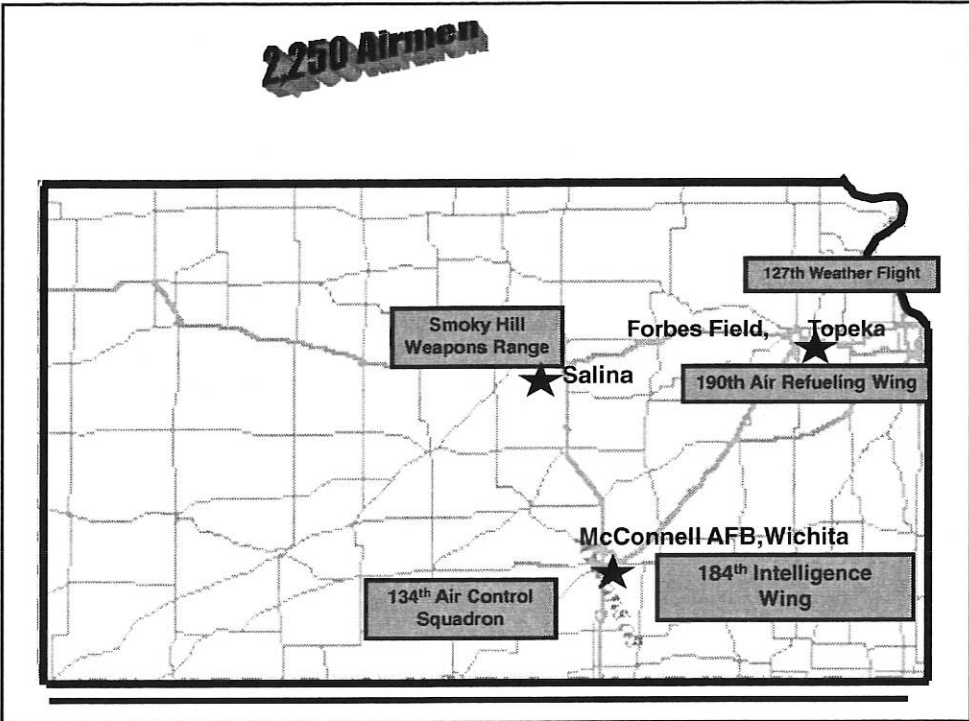
First events in 2004
Three tenants:
- Military to military
- Military to civilian
- Civilian to civilian

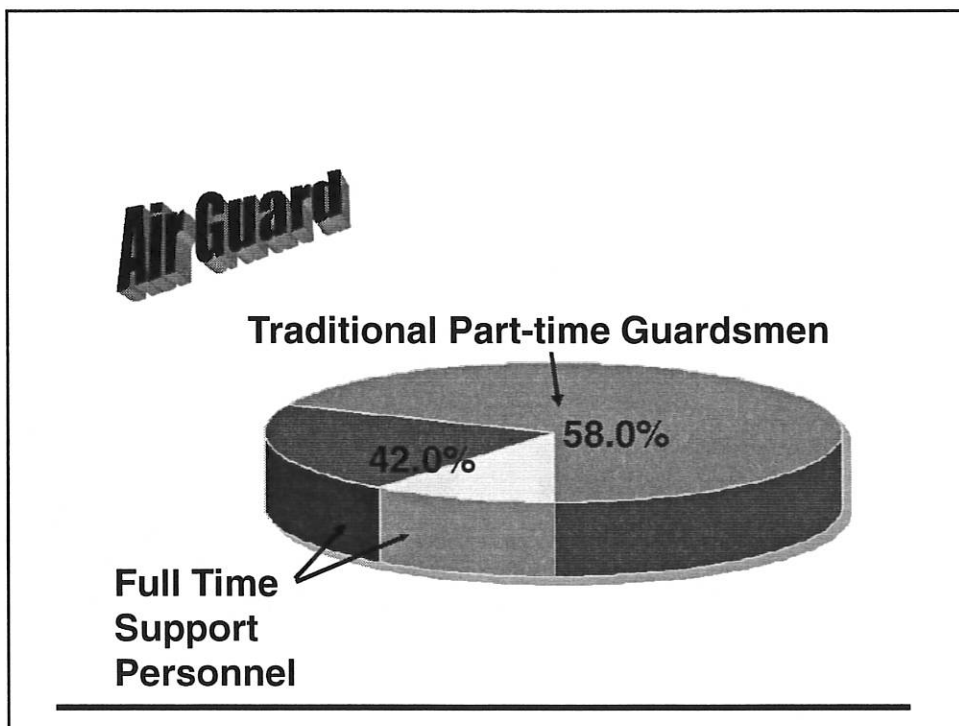
*The Kansas National Guard
led a 14 country multi-national
disaster relief exercise in
Armenia in July 2006*

The exercise was a huge success!!









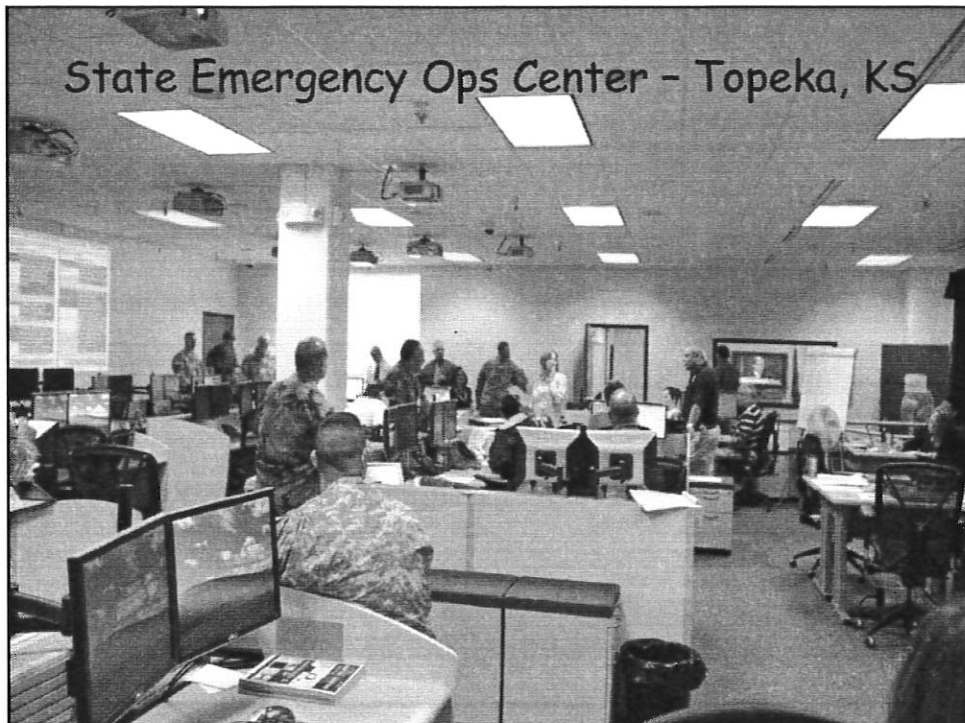
- \$ Financing the National Guard \$**
- Equipment from Army & Air Force Budget
 - Operating budget separate from Army & Air Force
 - Personnel Availability is Key Resource
 - Equipment shortages
 - *Individual: includes NVGs, weapons, radios*
 - *Major end items – vehicles, engineer equipment*
-

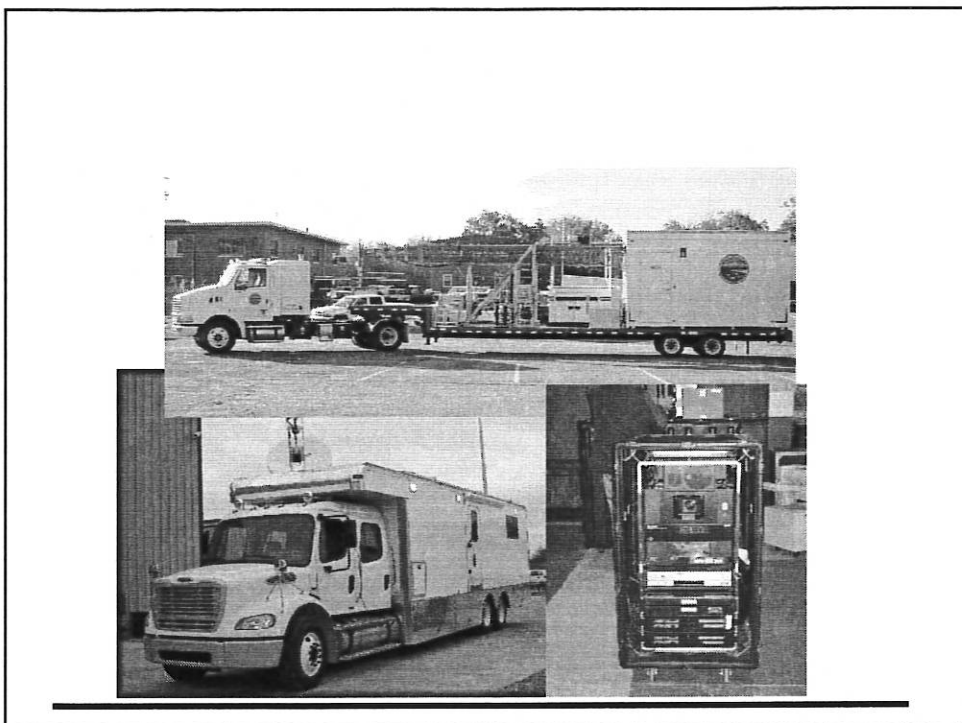
-
- **Soldier & Airman Care**
 - **Wounded Initiative**
 - **Retention Internal Review**
 - **Family Programs**
 - **Physical Fitness Centers**
 - **ESGR**



Our Most Precious Asset

-
- **Activation Payment and Pay Differential**
 - **Tuition Assist, In-State Tuition, Tuition Refund**
 - **Free Hunting and Fishing Licenses**
 - **Life Insurance**
 - **KS Military Emergency Relief Fund**
 - **Vehicle Registration**
 - **Business Tax Credits**
-



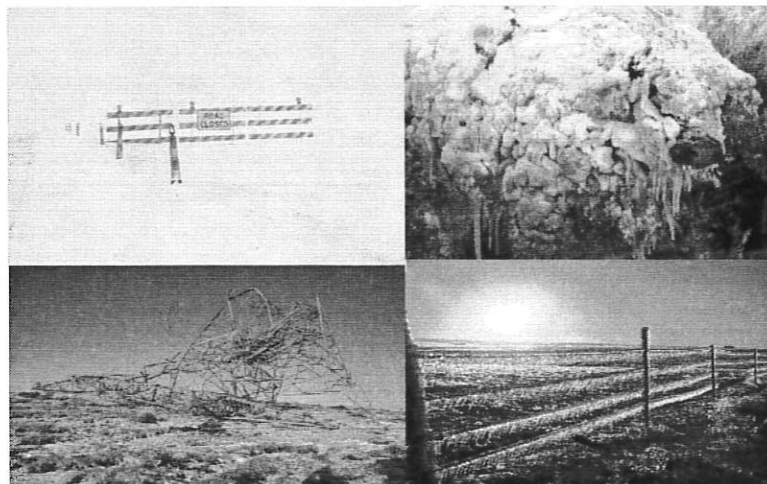


Kansas 2007 Presidential Disasters

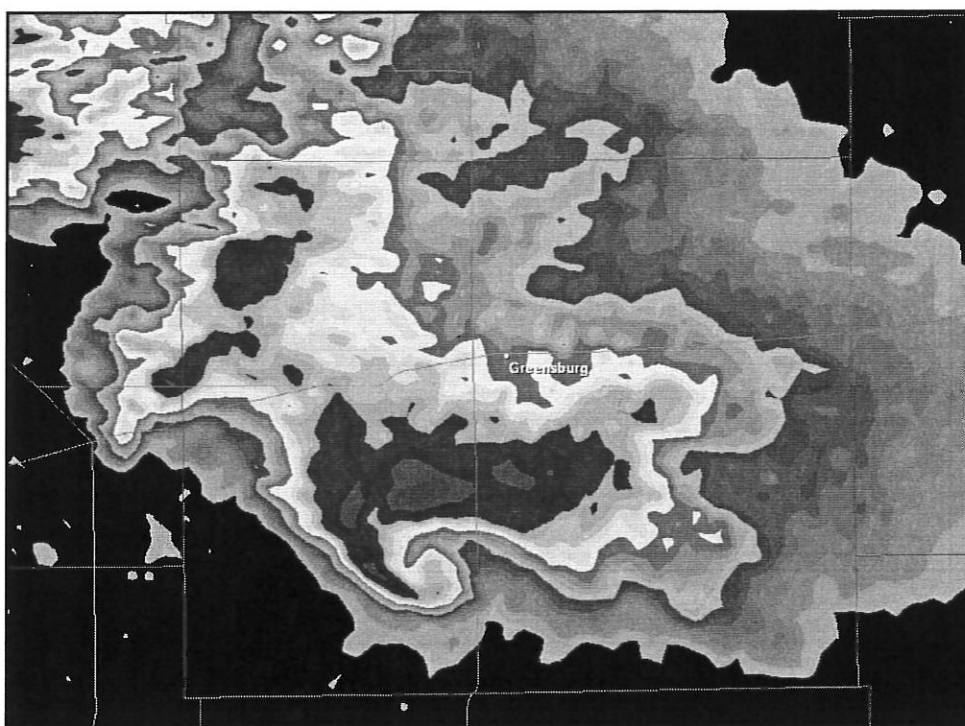
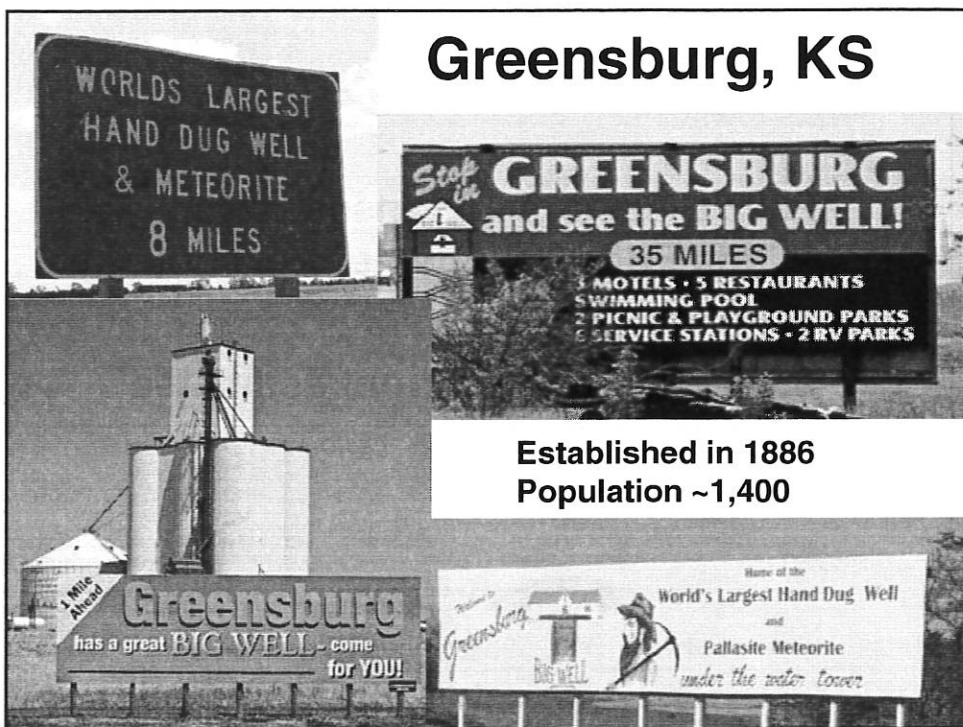
- **Dec. 31, 2006** - Winter Ice/Snow Storm - 44 counties
- **May 4, 2007** - Greensburg Destroyed by Tornado/Flooding in NE KS - 41 counties.
- **June 30, 2007** - Record setting floods in SE Kansas - 23 counties.
- **December 10, 2007** – Winter Ice/Snow Storm – 105 counties. (not approved yet, but \$\$ threshold met)

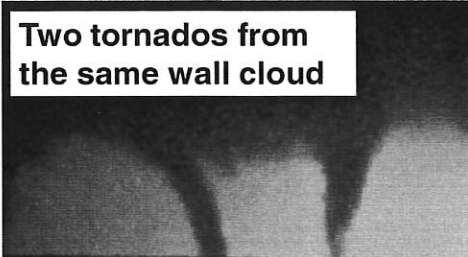
–2007 Disasters in Kansas typically fall on Friday nights before a holiday.

–\$618.7 million = current estimated cost of 4 disasters

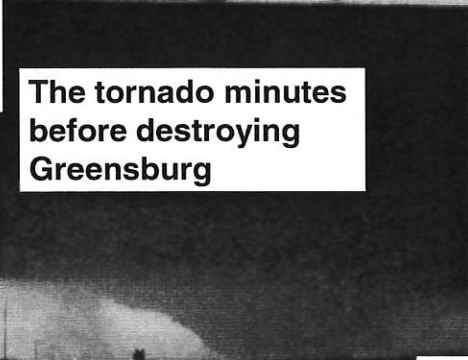


Winter Storm-Jan 2007






Two tornados from the same wall cloud

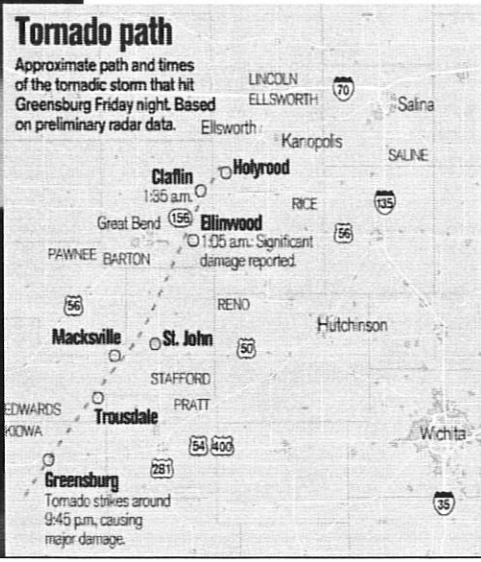


The tornado minutes before destroying Greensburg



**EF-5, 1.7 miles-wide
Winds of 205 mph, traveling 20 mph**


Tornado path
Approximate path and times of the tornadic storm that hit Greensburg Friday night. Based on preliminary radar data.



Greensburg
Tornado strikes around 9:45 p.m., causing major damage.

Initial Information

- **Approximately 9:50 PM**
 - SW Regional Coordinator reports **“I think I am standing on Main Street and it is GONE.....”**
 - No additional communication for over 45 minutes
- **Radio and Cell towers down**
 - Cell towers overloaded
 - Next 1.5 hrs sporadic communications

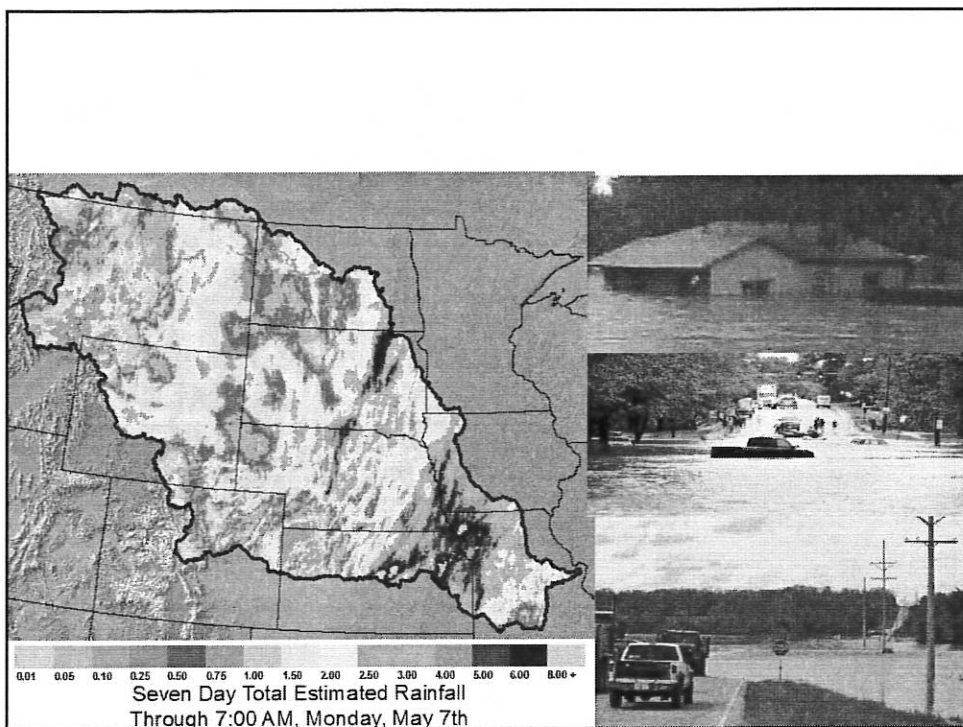






**EMEDS
in
Greensburg**

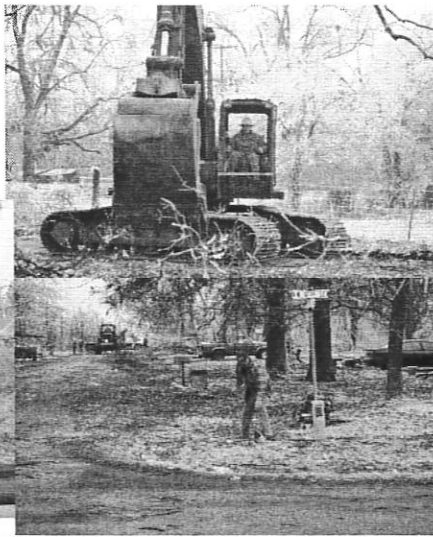
A collage of three black and white photographs showing the interior of an EMEDS tent and an aerial view of the site. The interior photos show medical equipment and supplies, while the aerial photo shows several large white tents and vehicles on a construction site.



SE Kansas Flood Disaster - June 30, 2007



- Ice storm
- December 2007
- All 105 counties
- 100k without power



January 2007

December 2007*

- | | |
|--|--|
| <ul style="list-style-type: none"> • 42 counties declared • Electrical damage <ul style="list-style-type: none"> – 9 rural electrics – 15,128 poles – 46,300 meters – 21 transmission towers • Total utility damage <ul style="list-style-type: none"> – \$342,820,992 | <ul style="list-style-type: none"> • 61 counties declared • Electrical damage <ul style="list-style-type: none"> – 24 rural electrics – 10,889 poles – 58,505 meters – 0 transmission towers • Total estimate <ul style="list-style-type: none"> – \$150,000,000 |
|--|--|

December 2007 unofficial data-major disaster declaration pending

*estimates

KEY LESSONS LEARNED

- **Relationships are the key to success**
 - **Recovery issues are very complex and not often planned for**
 - **Documentation, documentation, and more documentation**
 - **ICS does work / Unified Command**
-

KEY LESSONS LEARNED

- **Disaster Recovery Center (DRC) – vital one stop shop**
 - **Full implementation of the Incident Management Teams**
 - **Coordination of air missions – Civil Air Patrol, Air Guard, KHP**
-

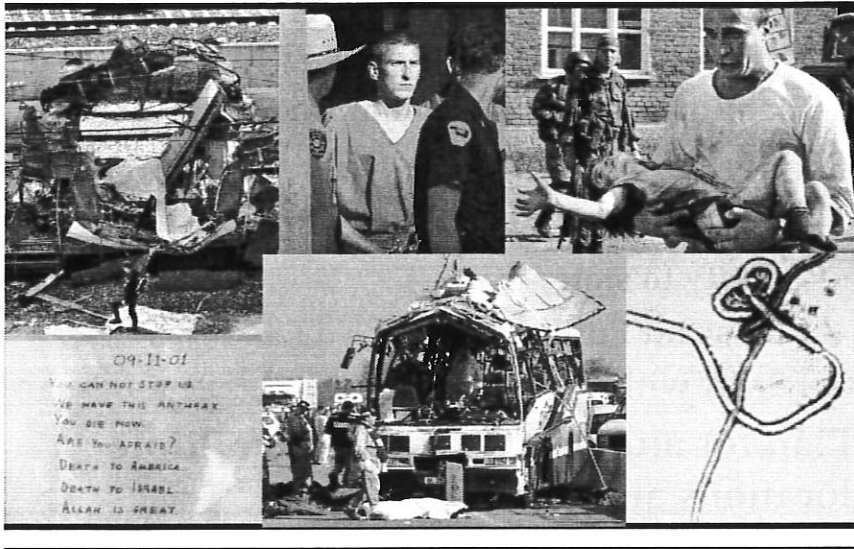
KEY LESSONS LEARNED

- **Definition of catastrophic event varies**
 - Planning needs vary community to community
 - **Ensure communication flow**
 - all operational levels
 - County to state
 - PIO's and Public Affairs
 - FEMA with State
 - **Plan for multiple disasters at multiple locations at once.**
-

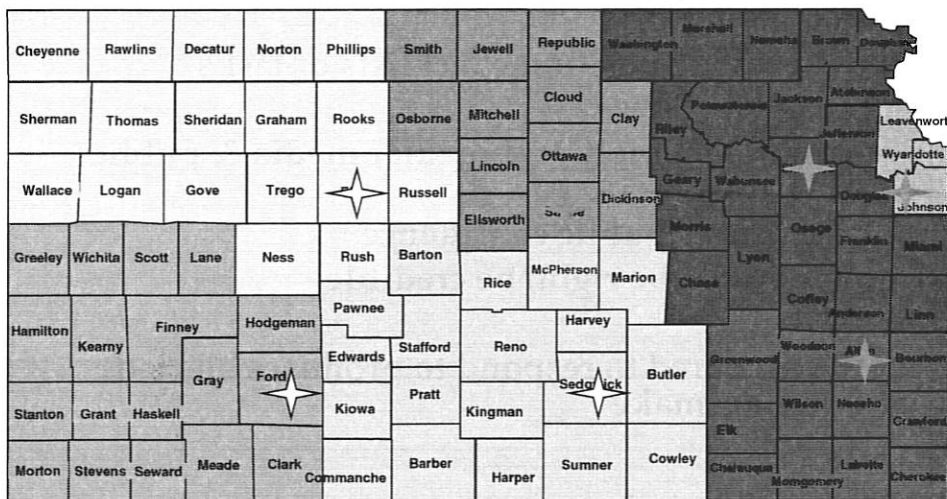
KEY LESSONS LEARNED

- **Train State Emergency Operations Center personnel**
 - provide position checklists of tasks
 - **Accurate, timely and regular media & public briefings**
 - Ensures public confidence
 - Be first, be right, be credible
 - **Be prepared to respond to promises elected officials make**
-

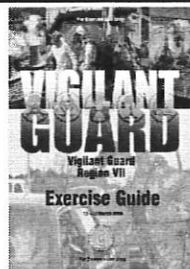
Future Threats - Terrorism



★ Regional Coordinators



Joint Operations



- 3rd Joint NGB VG exercise
- Joint Staff from FEMA Region 7
- 1st Multi-agency approach
- Joint Staff COOP plan exercised
- FAD outbreak scenario

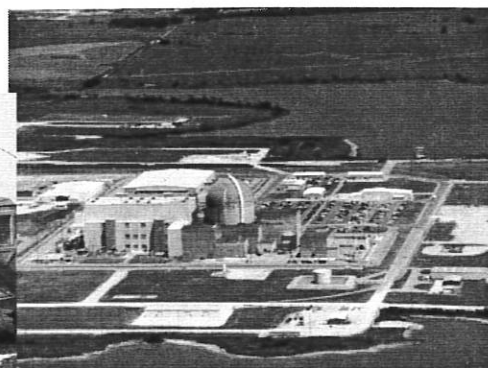
- Rescuer 2006
- Joint Staff training
- 14 Countries Involved
- Disaster scenario



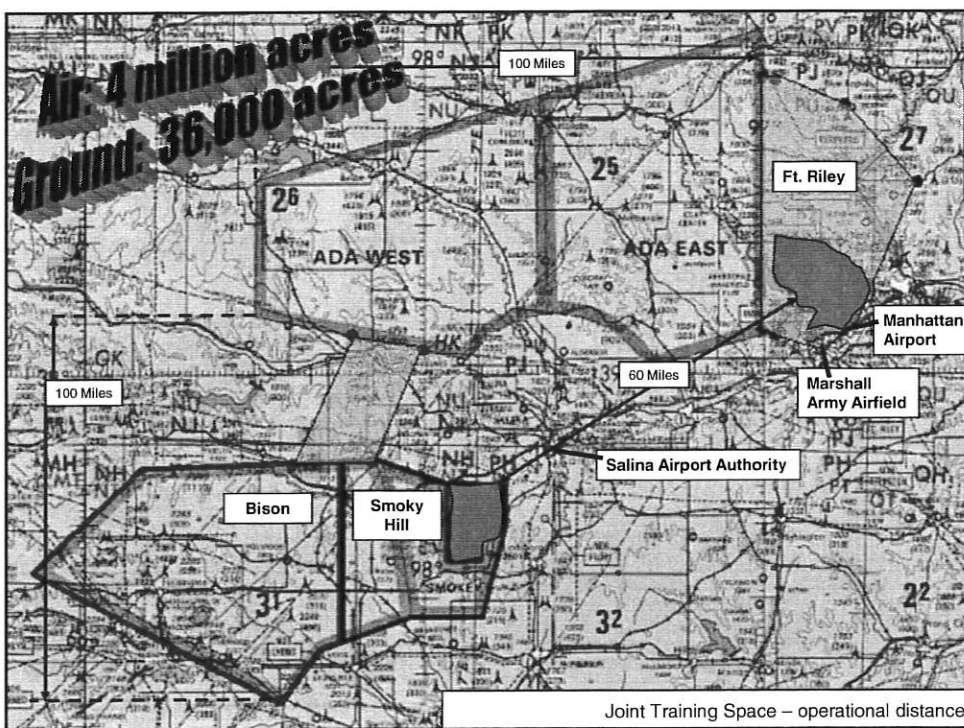
Critical State Security Mission

Wolf Creek
Nuclear
Power Plant

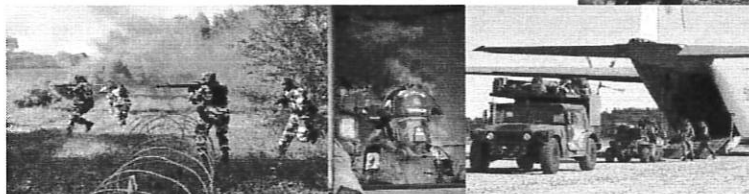
Security & Safety



We have the wide open spaces!



-
- **Military Ops/Urban Warfare Training**
 - **Combined UAV/Intel/Land Forces Training**
 - **Integrated with 184th assets**
 - **Convoy Training**
 - **Civilian Responder Training**
 - Law Enforcement, Fire & Medical



UAV SYMPOSIUM



Crisis City



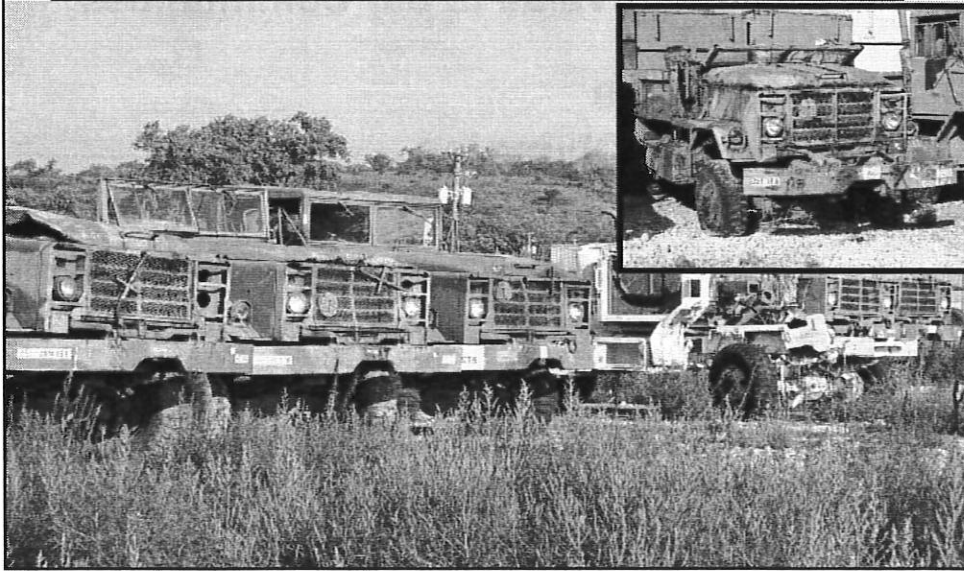
1. Disaster Town HQ
2. Firing Range
3. Drivers Course
4. Skid Pad
5. Simulator Building
6. Classroom / Gym
7. MOUT Village
8. Fire Training Tower
9. Haz-Mat Props
10. CHU Billeting
11. Maintenance Shed

Key Elements:

- Disaster City-like design/approach
- First responder emergency training focus
- Multi-discipline multi-agency focus
- Small campus (40-160 acres)
- Concrete/semi-permanent structures/training aids
- National Guard involvement will primarily be MACA-focused



National Level Maintenance Program



Adding Value to our Communities

Star Base

Special Olympics

Blood Drives

Boy/Girl Scouts of America

Chambers of Commerce

Color Guard

Mounted Color Guard

Community Celebration Days



