

MINUTES OF THE HOUSE ENERGY AND UTILITIES COMMITTEE

The meeting was called to order by Vice Chair Rob Olson at 9:15 A.M. on January 17, 2008 in Room 783 Docking State Office Building.

All members were present except:

Dan Johnson- excused  
Tom Hawk-excused  
Vaughn Flora-excused

Committee staff present:

Mary Galligan, Kansas Legislative Research  
Carol Toland, Kansas Legislative Research  
Mary Torrence, Revisor's Office  
Melissa Doeblin, Revisor's Office  
Renaë Hansen, Committee Administrative Assistant

Conferees appearing before the committee:

Steve Owens, Director of Distributions of Operations, Westar  
Dave Holthaus, Kansas Electric Cooperatives  
General Todd Bunting, Adjutant General's Office

Others attending:

Twenty five including the attached list.

Steve Owens, Westar, (Attachment 1), updated the committee on the process and progress of restoring power to their customers in Kansas that suffered power outages during the December 2007 ice storm. In addition Mr. Owens provided the committee with photos (Attachment 2) from the storm and some of the recovery efforts. He noted that the weight of a 200 foot span of wire with no ice is 15 pounds compared to 2 inches of ice weighing 1,100 pounds. That weight difference makes the lines very susceptible to wind damage, and to tree branches that might even touch the line.

Questions were asked and comments made by Representatives: Rocky Fund, Tom Sloan, Tom Hawk, Vern Swanson, Oletha Faust- Goudeau, Tom Moxley, and Richard Proehl.

Dave Holthaus, Kansas Electric Cooperatives, (Attachment 3), offered an update to the committee on the December 2007 storm outage. He offered information on the individual co-ops and their specific outages, as well as the ten different states that sent linemen to help restore power. Additionally, (Attachment 4), he included a brochure that showed the Christmas dinner served to linemen at the Kickapoo Reservation.

Questions were asked and comments made by Representatives: Tom Sloan, Carl Holmes, and Tom Hawk.

General Todd Bunting, Adjutant General's Office, (Attachments 5 and 6), offered information to the committee on the ice storm and shared with the committee the ways in which the electric utility companies and the National Guard worked together as a team to help restore power as quickly as possible. He noted that the Guard provided a member in Westar's office and that Westar had an employee in the Adjutant General's office to provide good communication to the restoration efforts.

Questions were asked and comments made by Representatives: Tom Sloan, and Tom Hawk.

Written testimony was offered by Kansas Municipal Utilities (Attachment 7), giving a short synopsis of the issues they encountered during the 2007 ice storm.

The next meeting is scheduled for January 23, 2008.

Meeting adjourned at 10:45 a.m..

# HOUSE ENERGY AND UTILITIES COMMITTEE GUEST LIST

DATE: January 17, 2008

NAME	REPRESENTING
Randy McHuer	The Adjutant General's Dept.
Steve Hottelhaus	KFC
STEVE OWENS	WESTAR ENERGY
JOE WARD	KDEM
JACK INGRAM	KDEM
William A. Alon	KDEM
Steve Harsha	KDEM
Sharon Watson	Adjutant General's Dept
John Smith	PMCA of KS
Jim Gardner	AT&T
John B. Haggberg	Westar
Kimberly Spencer Svaty	KMU
LARRY BERG	MIDWEST ENERGY
TOM DAY	KCC
LARRY HOLLOWAY	KCC

**Testimony of  
Steve Owens  
Executive Director Distribution Operations  
Westar Energy  
January 17, 2008**

Good morning Mr. Chairman and members of the committee. My name is Steve Owens, and I am the executive director of distribution operations for Westar Energy. I appreciate the opportunity to visit with you this morning about our recovery from the largest single storm in Westar's history.

Between December 9 and December 20, 2007, a massive ice storm interrupted service to 204,010 customers (31% of the Westar's 666,110 customers) across most of its territory. With the assistance of more than 1,900 non-company linemen, 1,200 tree trimmers, and dedicated efforts of 1,000 company employees working 17 hour days, Westar Energy was able to restore power to all customers in 10 days.

As had been predicted by Westar Energy's contract weather forecast service and most area meteorologists, beginning early morning Sunday, December 9, 2007 freezing rain swept through extreme southeast Kansas. The storm caused numerous scattered outages in the area in and around Pittsburg and Parsons. Outages were due to ice and trees. By noon Sunday, more than 8,000 customers were out of power in the area and crews were dispatched from the Wichita area as well as northeast Kansas. During the event 12,553 (78%) of Pittsburg's 16,076 customers were without power. In Parsons ~~9,305~~ <sup>1,769</sup> customers, or 18%, lost power sometime during the storm.

With additional ice accumulations predicted as a near certainty throughout most of the Westar service territory beginning midday Monday, Westar Energy management decided to open the storm center Sunday and begin securing contract line and vegetation (primarily tree trimming) crews and support to prepare for the impending storm system. Initial efforts to secure help from nearby utilities in the Midwest Mutual Aid group proved fruitless because member utilities either had already committed resources to the first wave of storm damage in Missouri and Oklahoma or needed to hold their resources in anticipation of the coming widespread storm. Westar Energy personnel responsible for emergency resource procurement began to contact more distant utilities and contractors to secure help in anticipation of predicted widespread damage.

As predicted, the second wave of freezing rain entered the southwest part of the service territory in the early morning hours of Monday, December 10, 2007 and spread across the service territory throughout the day, ultimately creating ice accumulations of 1 to 3 inches over the next two days along a 250 mile arc from

ENERGY AND HOUSE UTILITIES

DATE: 1/17/08

ATTACHMENT 1-1

Hutchinson to the northeast corner of the state. Over the course of the storm, 204,010 (or 31%) of Westar Energy's 666,110 customers lost power.

Key cities significantly involved included:

<u>Serving office</u>	<u>Customers served in area</u>	<u>Unique customers out in area</u>	<u>Percent out</u>
Abilene KS	8,642	8,482	98.1%
Arkansas City KS	10,398	3,141	30.2%
Atchison KS	10,501	8,440	80.4%
Cherryvale KS	1,484	16	1.1%
El Dorado KS	13,747	1,885	13.7%
Emporia KS	24,968	5,179	20.7%
Ft. Scott KS	6,382	3	0.0%
Hiawatha KS	4,173	4,128	98.9%
Humboldt, KS	5,023	2	0.0%
Hutchinson KS	27,602	20,660	74.8%
Independence KS	11,930	242	2.0%
Junction City KS	11,222	10,014	89.2%
Lawrence KS	47,283	12,001	25.4%
Leavenworth KS	21,114	7,663	36.3%
Manhattan KS	30,936	26,696	86.3%
Marysville KS	7,626	6,120	80.3%
Newton KS	19,388	3,699	19.1%
Olathe KS	37,349	7,996	21.4%
Parsons KS	9,305	1,709	18.4%
Pittsburg KS	16,076	12,553	78.1%
Salina KS	28,612	19,946	69.7%
Topeka KS	87,867	30,641	34.9%
Wichita KS	224,482	12,794	5.7%

Wichita, which experienced slightly higher temperatures during the initial freezing rain event, was effectively spared significant damage.

Total outage numbers peaked on Tuesday (12/11) noon at nearly 125,000 customers across the system. Daily outage maximum figures throughout the event were as follows:

Sunday, Dec. 09:	7,000
Monday, Dec. 10:	83,000
Tuesday, Dec. 11:	125,000
Wednesday, Dec. 12:	103,000
Thursday, Dec. 13:	76,000
Friday, Dec. 14:	55,000
Saturday, Dec. 15:	37,000



Sunday, Dec. 16:	21,000
Monday, Dec. 17:	14,000
Tuesday, Dec. 18:	7,000
Wednesday, Dec. 19:	2,000
Thursday, Dec. 20:	500
Friday, Dec. 21:	<100 All customers who could accept service restored

The widespread nature of the storm created a unique challenge for our restoration effort. The breadth of the affected area required five distinct storm restoration operations based in Hutchinson, Salina/Abilene, Manhattan/Junction City/Marysville, Topeka/Lawrence, and Atchison/Leavenworth/Hiawatha as well as smaller operations in Emporia, Shawnee, Newton and Arkansas City. This much significant damage over such a broad area is unprecedented at Westar Energy.

Ice creates an amazing stress on both tree limbs and aerial electrical equipment. For perspective, a small 8A copperweld conductor normally weighs 0.075 pounds per foot. Even with a light ice coating of ½ inch, the total weight per foot becomes 0.51 pounds or seven times the nominal weight. Two inches of ice creates a loading of 75 times nominal. Under a 2 inch loading of ice, a 200 foot span of this light copper conductor increases from 15 pounds to more than 1,100 pounds. This is more than enough to break conductor, cross arms and poles, particularly with the additional pressure of tree limbs or wind.

Restoration conditions were difficult and worsened by unrelenting cold weather and two following snow events. Damage was massive with 2,090 poles down, 7,872 spans of conductor down, 17,965 services down, which connect individual homes or businesses to the pole, and 5,400 lines and transformers needing re-fused. Much of the 34.5kV subtransmission system across northeast Kansas from Marysville to northeast of Atchison was out of service. In many rural locations, miles of line were down, often serving relatively low customer densities. In more populated areas, the storm damaged numerous individual services. Both of these situations require significant effort to restore small numbers of customers.

In such an event, clear communications with customers is vital. Their safety is at risk, and it's important they understand the magnitude of the storm so they can make decisions regarding accommodations. Local media outlets were extremely helpful in getting information out, but two of the largest media centers in our territory – Kansas City metro and Wichita – were largely spared in the storm. Generating media interest in these areas was vital as they were still primary sources of information for many of our customers, especially in northeast Kansas and the greater Hutchinson area.

Our community support was strong. In many areas, such as Manhattan, we went to local businesses and asked what support they could provide for things such as meals. Often we accepted and they stretched beyond their comfort level to do more.

Thanks to early efforts to acquire line and vegetation labor, linemen from other utilities and contractors began arriving Monday, Dec. 10. By the end of the storm, nearly 2,000 line contract and outside utility employees, more than 1,250 tree trimmers, 326 company line personnel and 722 other company employees were dedicated to the storm restoration effort. Outside line help from 21 states as far away as North Carolina, New Mexico, and South Dakota arrived to assist with restoration as follows:

Monday, Dec. 10:	55 linemen	
Tuesday, Dec. 11:	276 linemen	(total=331)
Wednesday, Dec. 12:	553 linemen	(total=884)
Thursday, Dec. 13:	521 linemen	(total=1,405)
Friday, Dec. 14:	480 linemen	(total=1,885)
Saturday, Dec. 15:	40 linemen	(total=1,925)
Sunday, Dec. 16:	70 linemen	(total=1,995)

In the later stages of the storm restoration, as areas finished restoring power, we routed available crews to the areas with customers remaining out. Only when customers throughout the system were restored, did we begin releasing the crews.

Our company crews continue to perform follow-up work, restoring service to damaged customer facilities and making temporary repairs permanent. This follow-up is typical in a large magnitude storm and should continue for several months.

We would like to thank The Adjutant General's Department. We worked closely throughout the storm restoration with TAG personnel on site in our storm command center. This relationship was mutually beneficial and helped provide valuable assistance to our communities through this difficult situation.

Thank you again for the opportunity to provide this information to you. I will stand for questions at the appropriate time.



# Westar Energy December 2007 Ice Storm Presentation 12/8/2007 – 12/20/2007

ENERGY AND HOUSE UTILITIES

DATE: 2/17/2008

ATTACHMENT 2-1



12.12.2007





12.12.2007













2-5

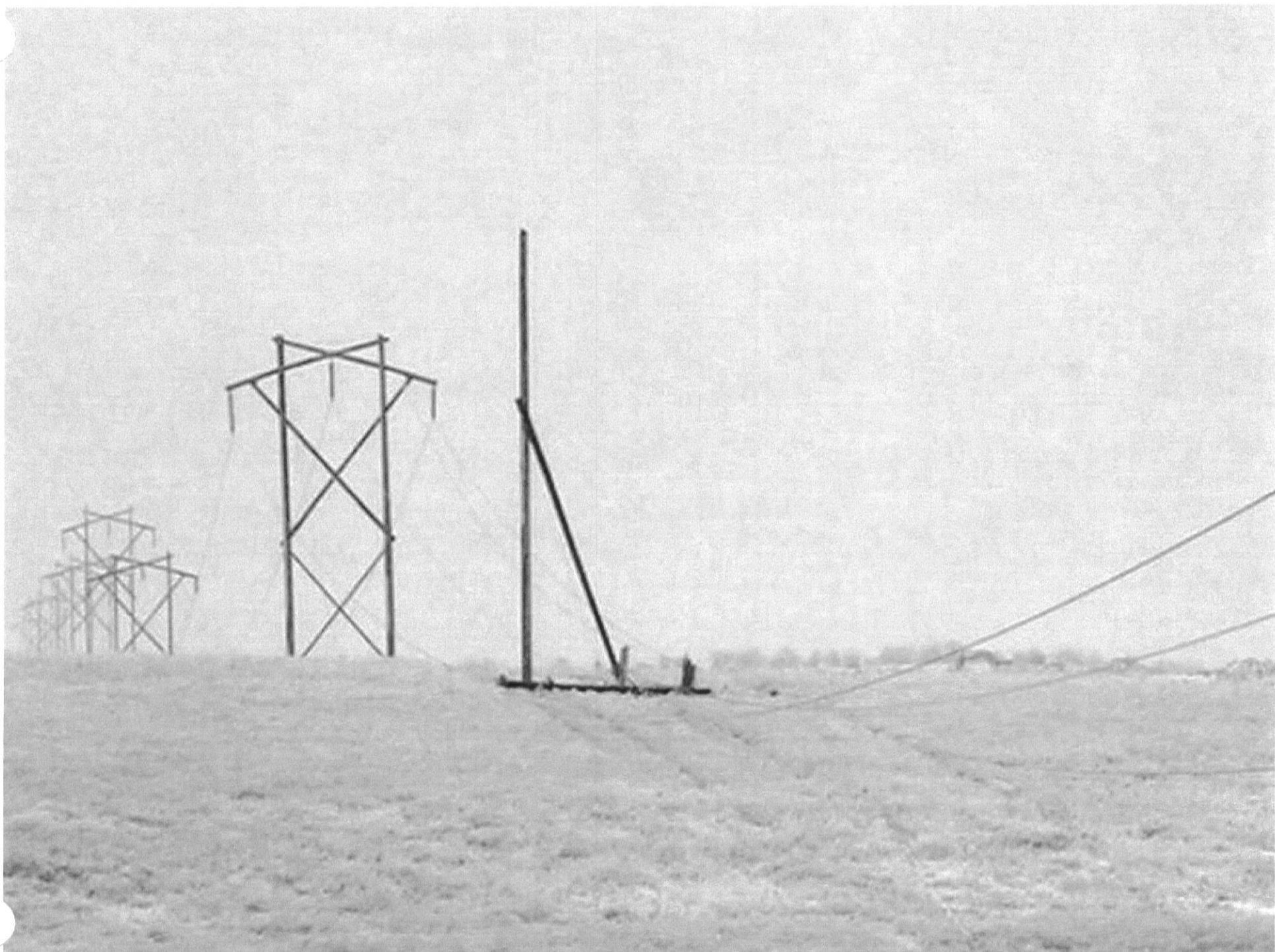


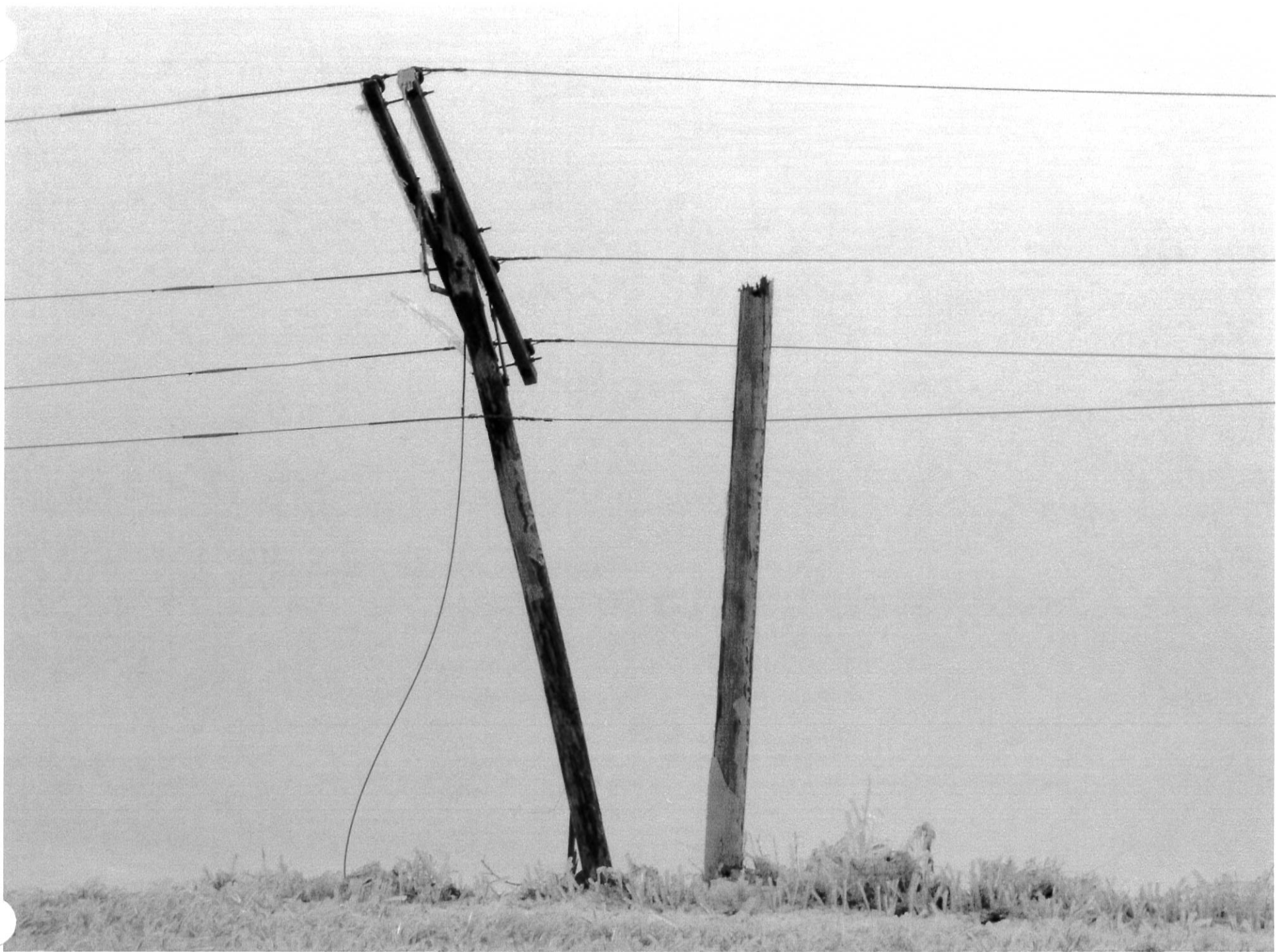


2-6

12.12.2007











2-9















# Dec. 2007 Ice Storm

Presented to the House Utilities Committee  
Dave Holthaus  
Jan. 17, 2008

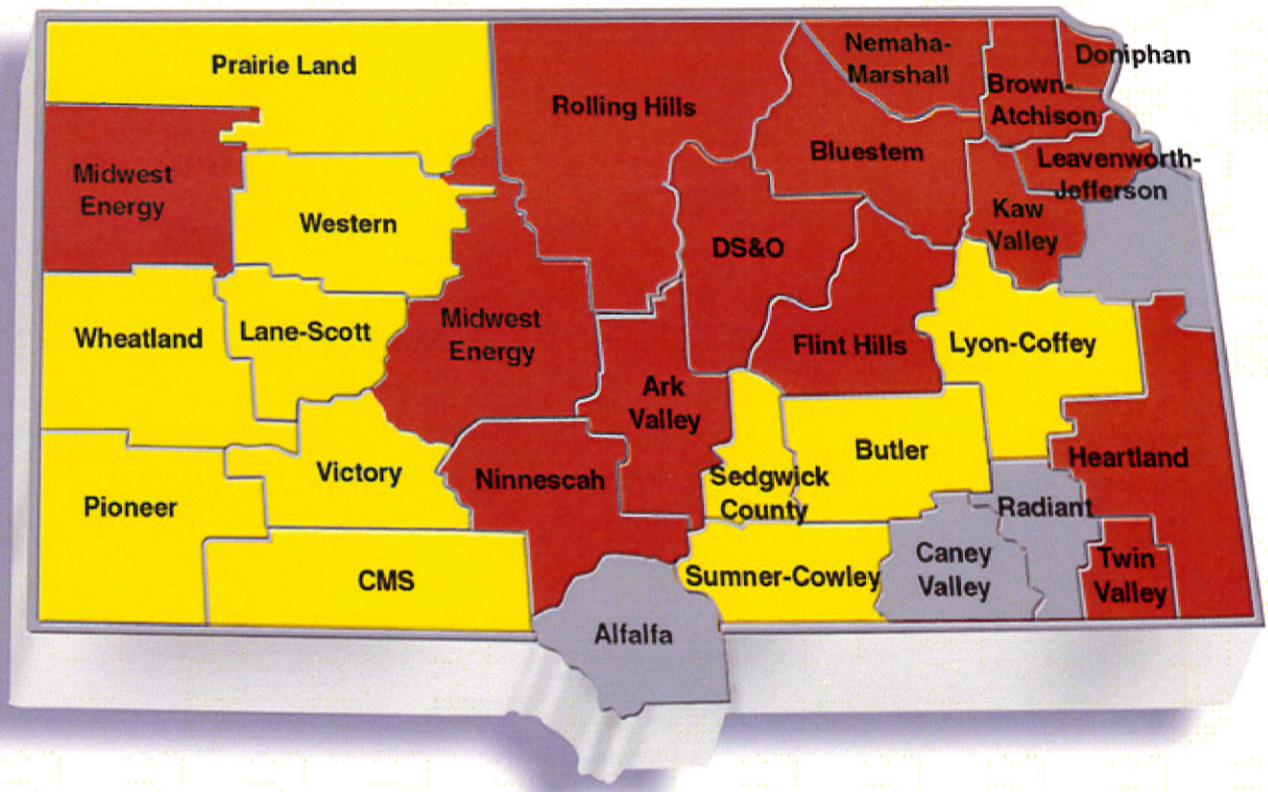
- 23 Kansas Electric Co-ops Affected
- 58,505 Outages
- 10,889 Broken Poles







# Kansas Outages - Dec. 8-12, 2007 Ice Storm



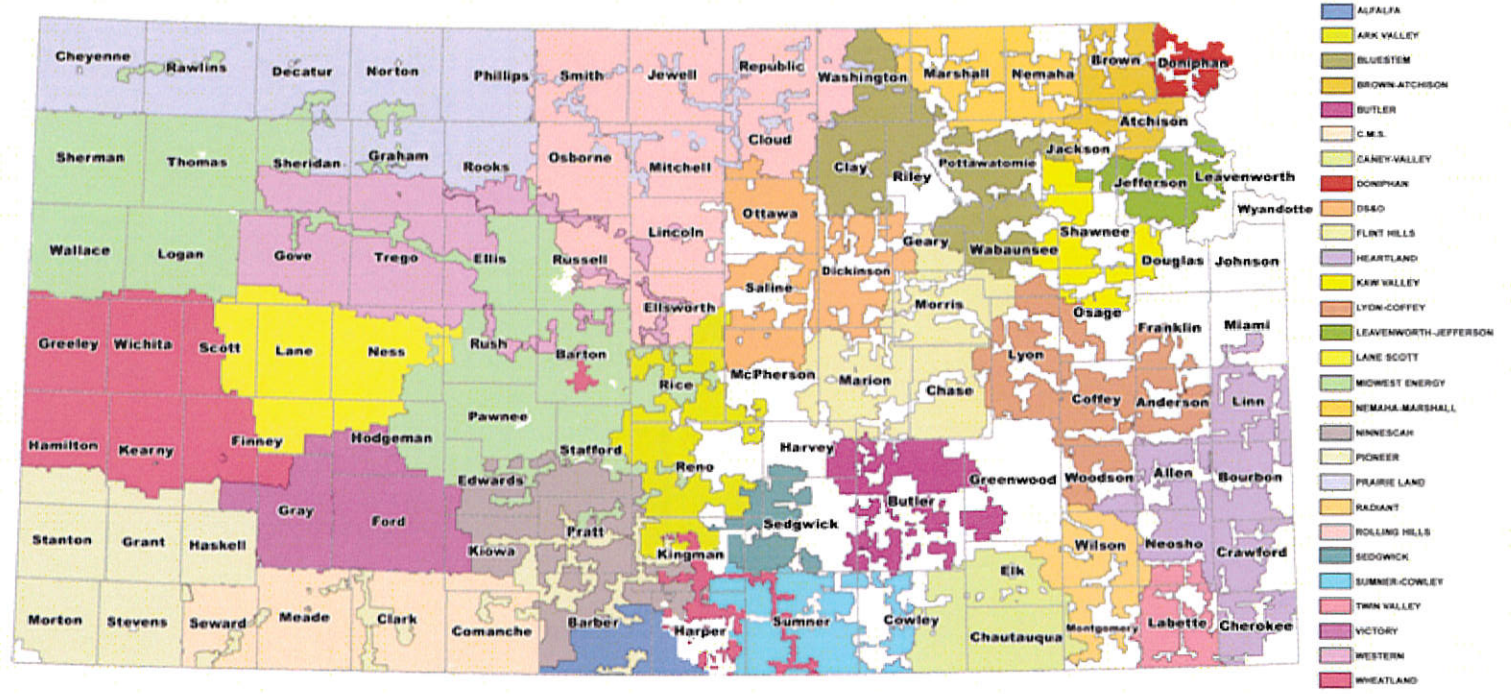
 **Major Outages (Handled In-House)**

 **Requested Mutual Aid Assistance**





# Electric Cooperatives in Kansas





# Outages by Co-op



■ Ark Valley	3,000	■ Lyon-Coffey	470
■ Bluestem	4,400	■ Midwest Energy	9,000
■ Brown-Atchison	3,158	■ Nemaha-Marshall	3,000
■ Butler	330	■ Ninnescah	2,400
■ CMS	2,500	■ Prairie Land	200
■ Doniphan	1,650	■ Rolling Hills	3,000
■ DS&O	4,700	■ Sedgwick County	100
■ Flint Hills	4,300	■ Twin Valley	200
■ Heartland	1,300	■ Victory	500
■ Kaw Valley	5,550	■ Western	1,500
■ Lane-Scott	747	■ Wheatland	500
■ Leavenworth-Jefferson	6,000	■ <b>TOTAL</b>	<b>58,505</b>



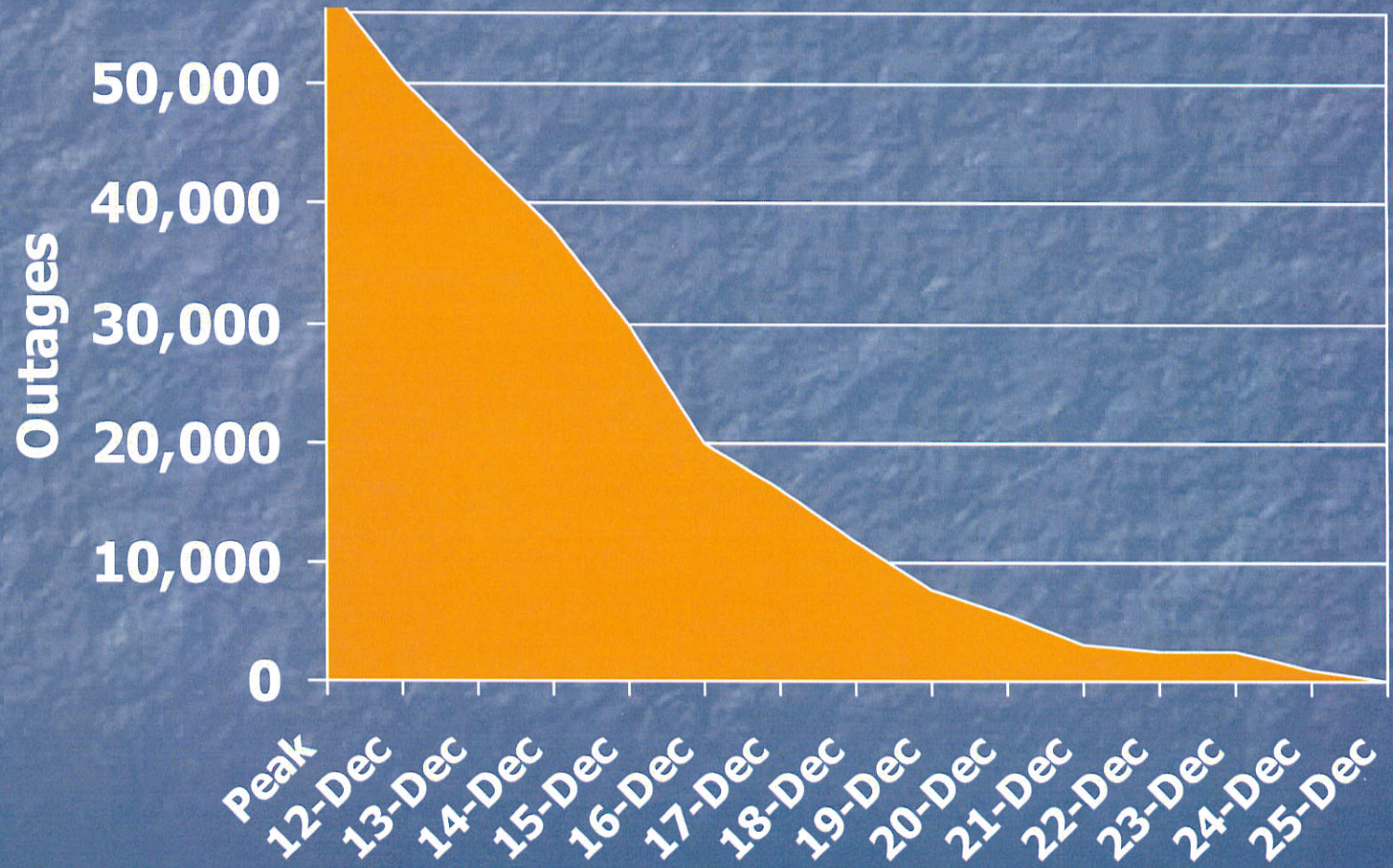
# Mutual Aid from KEC

- 1,500 linemen brought in
- Representing 10 states
  1. Arkansas
  2. Colorado
  3. Kansas
  4. Louisiana
  5. Missouri
  6. Nebraska
  7. North Dakota
  8. Oklahoma
  9. South Dakota
  10. Texas





# Outage Restoration



2-3

3-6



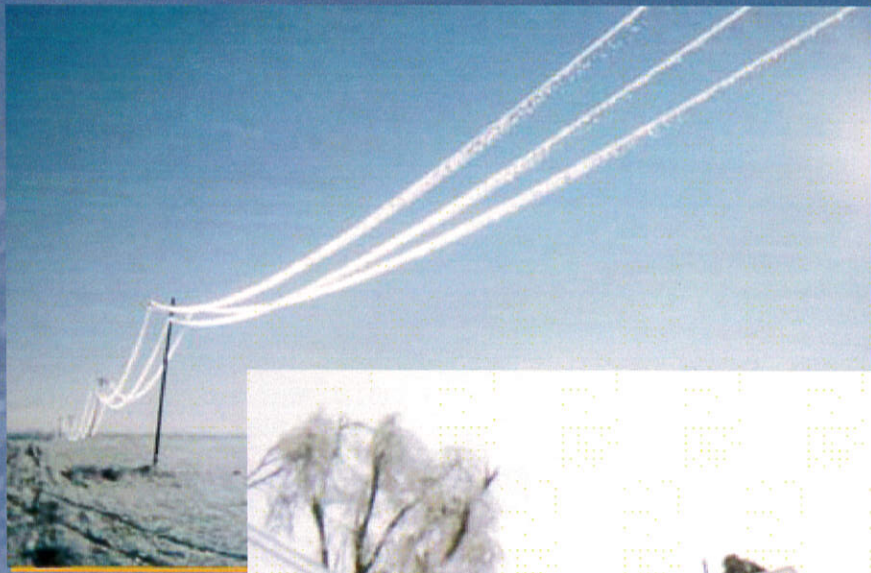
# Dec. '06 & Dec. '07 Storms Compared



	<b>Dec. 2006</b>	<b>Dec. 2007</b>
<b>Co-ops Affected</b>	9	23
<b>Poles Down</b>	15,128 + 21 Transmission Towers	10,889
<b>Outages</b>	46,300	58,505



3-8



**KEC**  
KANSAS ELECTRIC  
COOPERATIVES, INC.  
A Touchstone Energy® Cooperative

3-8









**KEC**  
KANSAS ELECTRIC  
COOPERATIVES, INC.  
A Touchstone Energy® Cooperative

3-10

3-10









**KEC**  
KANSAS ELECTRIC  
COOPERATIVES, INC.  
A Touchstone Energy® Cooperative

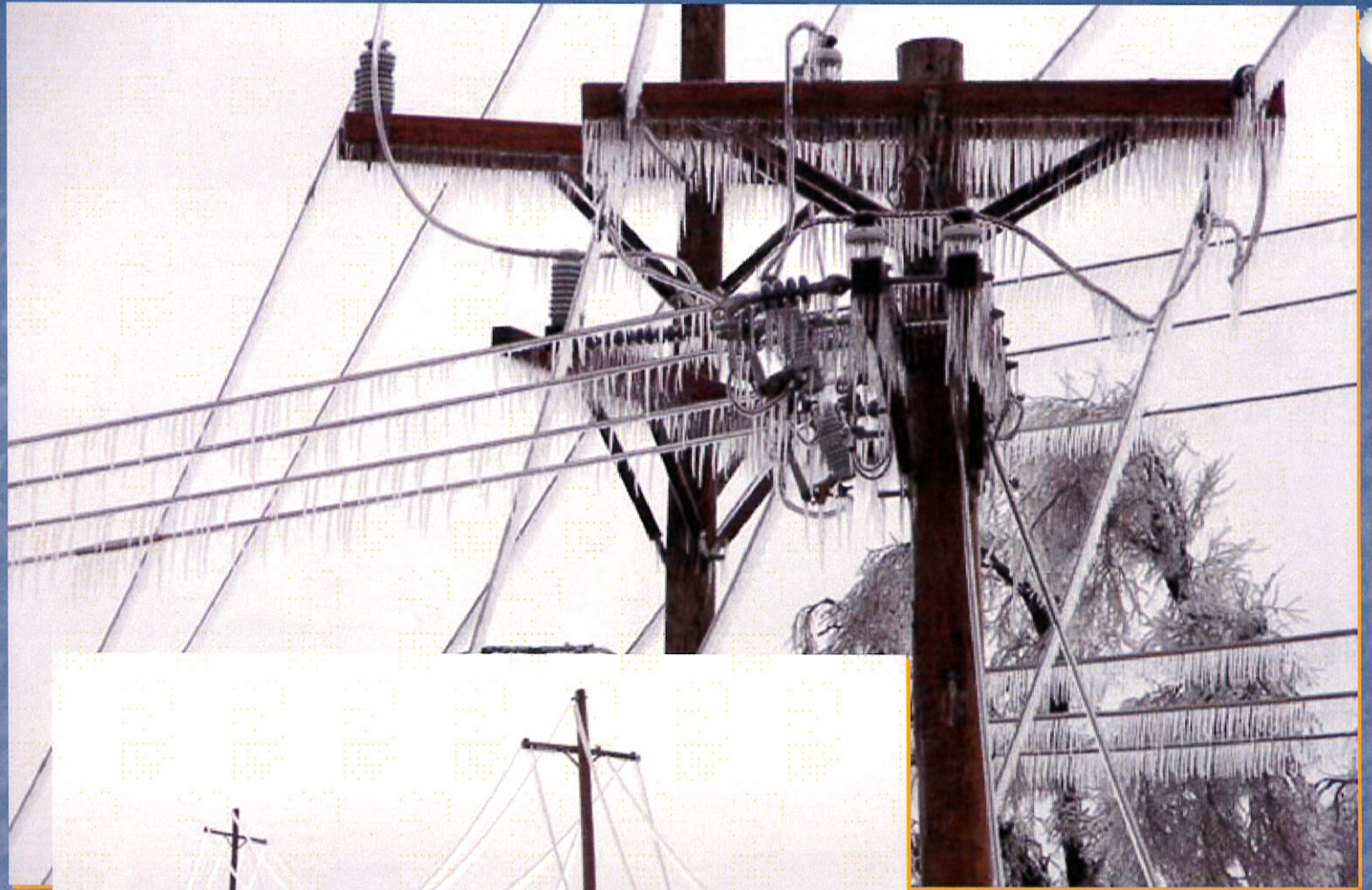
3-12

3-12









**KEC**  
KANSAS ELECTRIC  
COOPERATIVES, INC.  
A Touchstone Energy® Cooperative

3-14

3-14







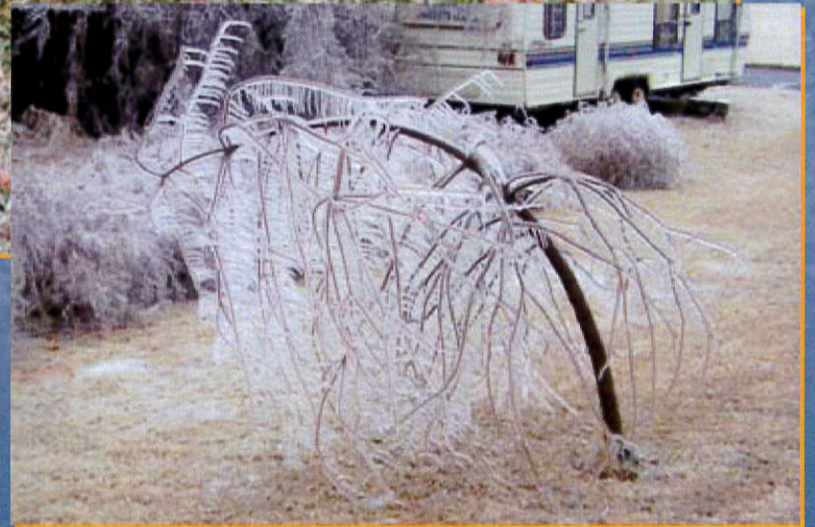


**KEC**  
KANSAS ELECTRIC  
COOPERATIVES, INC.  
A Touchstone Energy® Cooperative

3-16

3-16







# Member Appreciation



'Twas two weeks before Christmas  
Eve when the lights blinked not once,  
but thrice, We knew right away it had  
to be because of the ice!

With my head in the sink at eight  
minutes till eight, We knew just then  
that the shampoo was too late.

Not a sound was heard in the  
blackest of night, Till the husband  
appeared with a trusty flashlight.

All that week – each day – we  
would hope, Electricity please, but,  
Oh Dear – Oh Nope!

On the eighth night we saw a  
"star in the East", We had just  
finished our fifth can of soup – oh  
what a feast.

'Twas not a star, but the REA  
truck, What a joy – what good tidings  
and not just good luck.

7:30 p.m. and the darkest of  
night, Those fellows, those Heroes  
had come to our plight.

With a few hundred poles and a  
flick of a switch, The lights were on  
with a narry a hitch!

The tv, radio, and lights were as  
bright as high noon, And the  
freezer was humming a beautiful  
tune.

How happy, how happy were we,  
That handsome, helmeted fellow to  
see.

Then he turned with a smile,  
Saying "now you are on for more  
than a while".

I heard him exclaim 'for he  
moved out of sight, Now, you folks  
have a very good night!

All we could say was, "Thank  
you, Thank you so", And then, on  
to the next home he did go.

- by Virginia Russell, St. John,  
Ninnescah member



# Member Appreciation

Angels in hard hats and bright yellow coats,  
Mounted in bucket trucks towing tall poles.  
Big bobbins of cable, 'neath flood lights work on,  
In cold, snow and ice, their hours are long!  
From many locations their addresses are spread.  
When the calls go out to the rescue they're led.  
Not overly gentle, sometimes they look rough.  
But when thousands are powerless their actions are  
enough!  
Did God send the ice storm? I really can't say.  
But His angels in hard hats turn night back to day!

Thanks, linemen! We love you!

Sharon Tally, Keats, KS - Bluestem Member











Kathy Bradley, Jean Conklin, Lena Smith, Gerri Clift, Lowana Sacquat and Ashley Thomas

# Christmas Eve Dinner at the Kickapoo Reservation



ENERGY AND HOUSE UTILITIES

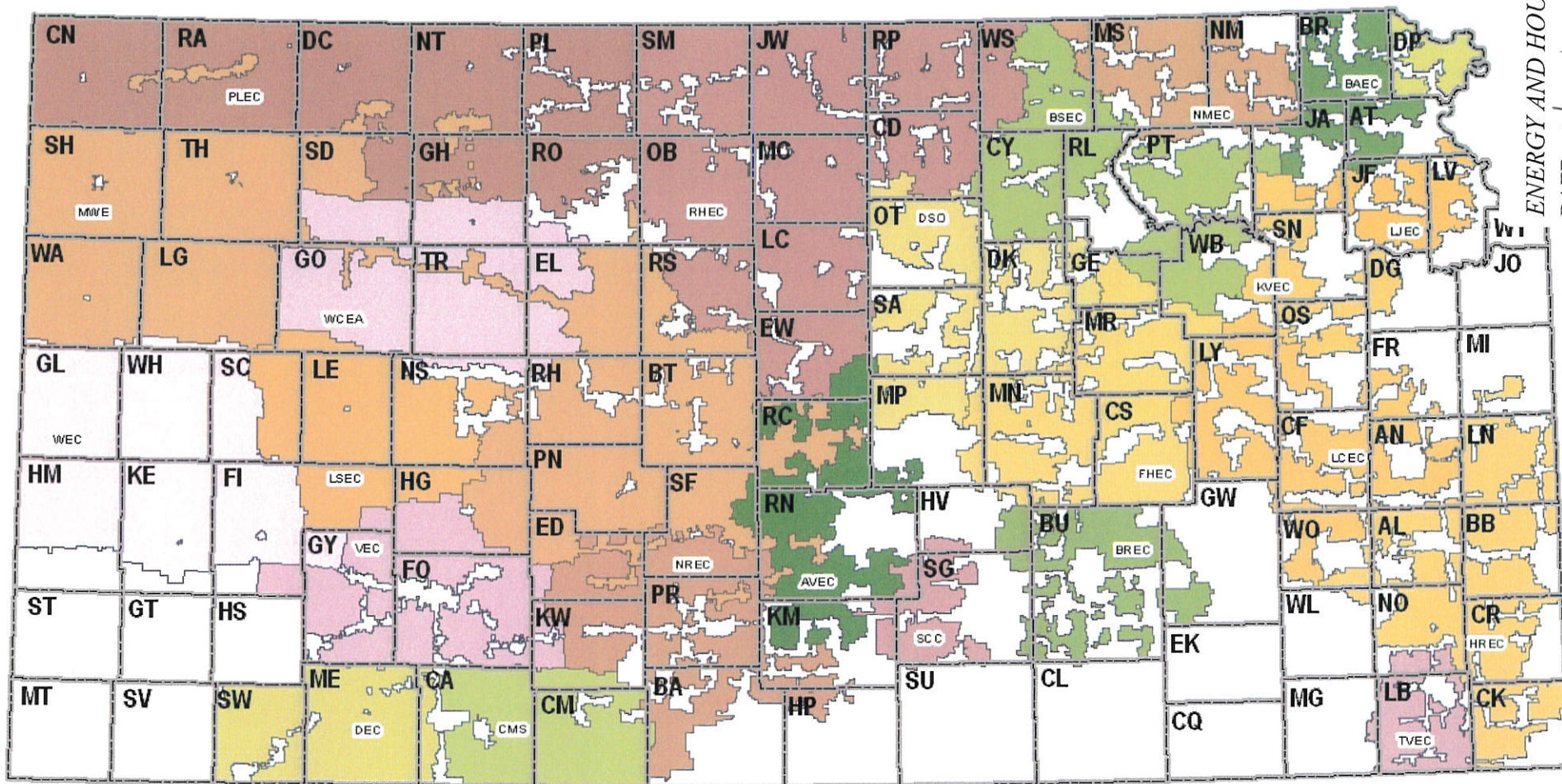
DATE: 1/17/2008

ATTACHMENT 4



# Rural Electric Status 2007 Winter Weather and Ice

ENERGY AND HOUSE UTILITIES  
DATE: 1/17/2008  
ATTACHMENT 5



## Legend

Ark Valley (AVEC)	CMS	Heartland (HREC)	Lane-Scott (LSEC)	Prairie Land (PLEC)	Victory (VEC)
Brown-Atchison (BAEC)	Doniphan (DEC)	Kaw Valley (KVEC)	Midwest Energy (MWE)	Rolling Hills (RHEC)	Western (WCEA)
Butler (BREC)	DS&O (DSO)	Lyon-Coffey (LCEC)	Nemeha-Marshall (NMEC)	Sedgwick County (SCC)	Wheatland (WEC)
Bluestem (BSEC)	Flint Hills (FHEC)	Leavenworth-Jefferson (LJEC)	Ninnescah (NREC)	Twin Valley (TVEC)	

1/17/08

Miles

Kansas Advisory Committee Report



**Kansas Disasters  
2007**

Major General Tod M. Bunting  
The Adjutant General  
and  
Division of Emergency Management  
Director

1

---

---

---

---

---

---

---

---

**Winter Storm  
December 2007**

**EM-3282-KS**

2

---

---

---

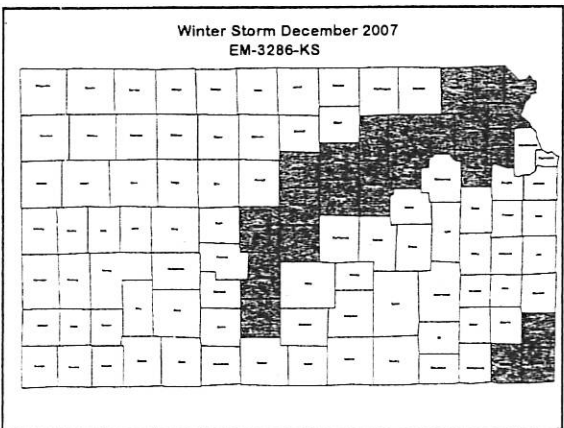
---

---

---

---

---



---

---

---

---

---

---

---

---

*ENERGY AND HOUSE UTILITIES*  
DATE: 1/17/2008  
ATTACHMENT 6-1



### Incident Overview

- **December 9<sup>th</sup>**
  - State Emergency Operations Center (SEOC)
    - Level 2 – Watch
      - Emergency Management and National Guard staff
  
- **December 10<sup>th</sup>**
  - State Emergency Operations Center (SEOC)
    - Level 3 – 24 hour operations
  - Governor's declaration – 105 counties
    - Kansas Response Plan activated

4

---

---

---

---

---

---

---

---

### Incident Overview

- **December 11<sup>th</sup>**
  - Governor requests emergency declaration from President
  
- **December 12<sup>th</sup>**
  - State Emergency Operations Center (SEOC)
    - Level 5 – Federal involvement
  - President approves emergency declaration
    - direct federal assistance for 105 counties
      - generators, water, cots, MREs, technical assistance

5

---

---

---

---

---

---

---

---

### Incident Overview

- **Storm-related fatalities - 2**
  - Reno and Geary
  
- **State mission assignments - 170**
  - transportation (86)
  - generators (47)
  - personnel (11)
  - cots (8)
  - water (7)
  - armory - shelter (4)
  - Search & Rescue (2)
  - emergency debris removal (2)
  - heater meals (1)
  - security (1)
  - equipment (1)

6

---

---

---

---

---

---

---

---



## Incident Overview

- Total shelters open at peak - 50
- Total meters at peak - 183,505
  - Westar Energy (125,000)
  - Rural Electric Coops (58,505)
- Total poles - 12,979
  - Westar Energy (2,090)
  - Rural Electric Coops (10,889)
- Total linemen
  - Westar Energy (1,995)
  - Rural Electric Coops - compiling data

7

---

---

---

---

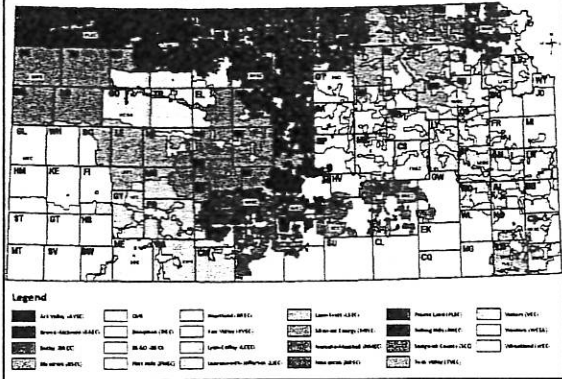
---

---

---

---

Rural Electric Status  
2007 Winter Weather and Ice




---

---

---

---

---

---

---

---

## Public Assistance Estimates

- Category A
  - Debris removal
  - \$16,000,000
- Category B
  - Emergency protective measures
  - \$3,000,000
- Category C
  - Roads
  - \$600,000

Estimates are not official-request for major disaster declaration pending

9

---

---

---

---

---

---

---

---



### Public Assistance Estimates

- Category D
  - Water control facilities
    - no damage reported
- Category E
  - Public buildings
    - \$144,000
- Category F
  - Utilities
    - \$150,000,000

Estimates are not official-request for major disaster declaration pending

10

---

---

---

---

---

---

---

---

### Public Assistance Estimates

- Category G
  - Recreational or other
    - \$6,000
- Total Estimate - all categories
  - \$169,750,000
    - state share (10%)
      - \$1,697,500

Estimates are not official-request for major disaster declaration pending

11

---

---

---

---

---

---

---

---

### January 2007 vs December 2007

January 2007	December 2007*
<ul style="list-style-type: none"> <li>• 42 counties declared</li> </ul>	<ul style="list-style-type: none"> <li>• 61 counties declared</li> </ul>
<ul style="list-style-type: none"> <li>• Electrical damage               <ul style="list-style-type: none"> <li>- 9 rural electrics</li> <li>- 15,128 poles</li> <li>- 46,300 meters</li> <li>- 21 transmission towers</li> </ul> </li> </ul>	<ul style="list-style-type: none"> <li>• Electrical damage               <ul style="list-style-type: none"> <li>- 24 rural electrics</li> <li>- 10,889 poles</li> <li>- 58,505 meters</li> <li>- 0 transmission towers</li> </ul> </li> </ul>
<ul style="list-style-type: none"> <li>• Total utility damage               <ul style="list-style-type: none"> <li>- \$342,820,992</li> </ul> </li> </ul>	<ul style="list-style-type: none"> <li>• Total estimate               <ul style="list-style-type: none"> <li>- \$150,000,000</li> </ul> </li> </ul>

December 2007 unofficial data-major disaster declaration pending  
\*estimates

12

---

---

---

---

---

---

---

---



## Emergency Support Functions

- **ESF #1 – Transportation**
  - Kansas National Guard
    - resources and commodities
    - SEOC operations
- **ESF #3 – Public Works & engineering**
  - Kansas Department of Transportation
    - emergency snow removal
    - SEOC operations

13

---

---

---

---

---

---

---

---

## Emergency Support Functions

- **ESF #5 – Emergency management**
  - Division of Emergency Management
    - SEOC management and operations – 24 hour staffing
    - assessments (needs and damage)
    - mission assignments
    - coordinate response and recovery missions
    - prepare disaster declaration requests
    - situational awareness

14

---

---

---

---

---

---

---

---

## Emergency Support Functions

- **ESF #6 – Mass care**
  - American Red Cross
    - shelter, mass feeding, and comfort stations
    - SEOC operations
  - Kansas National Guard
    - comfort stations
    - SEOC operations
  - Department of Administration
    - special needs population planning

15

---

---

---

---

---

---

---

---



**Emergency Support Functions**

- **ESF #7 – Resource management**
  - Division of Emergency Management
    - coordination of all disaster-related resources
    - SEOC operations
  - Kansas National Guard
    - cots, generators, water, technical assistance
    - SEOC operations
  - Kansas Contractors Assn. and Land Improvement Contractors Assn.
    - vendors, technical assistance

16

---

---

---

---

---

---

---

---

**Emergency Support Functions**

- **ESF #8 – Health & medical**
  - Kansas Department of Health & Environment
    - hospital and critical care nursing facilities
    - SEOC operations
- **ESF #9 – Search & Rescue**
  - Kansas National Guard
    - Door-to-door searches
      - Cherokee and Marion Counties

17

---

---

---

---

---

---

---

---

**Emergency Support Functions**

- **ESF #12 – Energy**
  - Division of Emergency Management
    - prioritize restoration of services
    - coordination with utility providers
    - SEOC operations
  - Westar Energy
    - prioritize restoration of services
    - operations center personnel exchanges
  - Rural Electric Cooperatives
    - information sharing

18

---

---

---

---

---

---

---

---



## Emergency Support Functions

- ESF #15 – External communications
  - The Adjutant General
  - Governor's office
  - Westar Energy
    - joint releases, information sharing, public protection measures

19

---

---

---

---

---

---

---

---

Flooding  
June 2007

DR-1711-KS

20

---

---

---

---

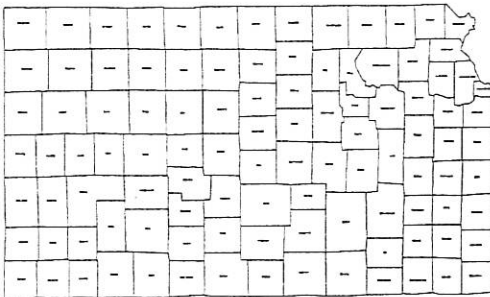
---

---

---

---

Flooding  
DR-1711-KS



---

---

---

---

---

---

---

---



### Incident Overview

- **June 29th**
  - State Emergency Operations Center (SEOC)
    - Level 2 – Watch
    - Emergency Management and National Guard staff
- **June 30th**
  - State Emergency Operations Center (SEOC)
    - Level 3 – 24 hour operations
  - Governor's declaration – 17 Southeast counties
    - Kansas Response Plan activated

22

---

---

---

---

---

---

---

---

### Incident Overview

- **July 1<sup>st</sup>**
  - Governor requests expedited major disaster declaration from President
    - 17 Southeast Counties
- **July 2<sup>nd</sup>**
  - State Emergency Operations Center (SEOC)
    - Level 5 – Federal involvement
  - President approves life saving & protective measures and direct federal assistance
    - generators, water, ice, technical assistance

23

---

---

---

---

---

---

---

---

### Incident Overview

- **July 5<sup>th</sup>**
  - President approves Individual Assistance
    - Elk, Miami, Montgomery, Neosho, Wilson
- **July 13<sup>th</sup>**
  - President approves Individual Assistance
    - Allen, Cowley, Linn, Labette

24

---

---

---

---

---

---

---

---



**Incident Overview**

- July 18<sup>th</sup>
  - President approves Individual Assistance
    - Anderson, Bourbon, Butler, Chautauqua, Cherokee, Coffey, Crawford, Franklin, Greenwood, Osage
  - President approves Public Assistance
    - Anderson, Bourbon, Butler, Chautauqua, Cherokee, Crawford, Coffey, Cowley, Elk Franklin, Greenwood, Harper, Labette, Linn, Osage, Miami, Montgomery, Neosho, Wilson, Woodson
- July 25<sup>th</sup>
  - Incident period closes
- August 17<sup>th</sup>
  - President approves Public Assistance
    - Edwards, Pawnee

25

---

---

---

---

---

---

---

---

---

---

**Incident Overview**

- Storm-related fatality - 1
  - Montgomery County - Coffeyville
- State mission assignments - 213
  - emergency services (64)
  - local governmental assistance (54)
    - includes Kansas Incident Management Teams
  - transportation (32)
  - health & safety (22)
  - facilities and utility restoration - 15
  - resources - (11)
  - debris removal (6)
  - communications (5)
  - search & rescue (4)

26

---

---

---

---

---

---

---

---

---

---

**Federal Assistance**

- Total missions - 40
  - Total \$5,089,075
    - EPA, US Army Corps of Engineers
    - 100 % federal share
- Total direct federal assistance
  - 9 missions
    - water and ice
  - Total \$1,461,202
    - federal share \$1,169,026
    - state share \$292,256

27

---

---

---

---

---

---

---

---

---

---



## Individual Assistance

- Total registrations - 4,082
- Housing assistance - \$14,923,246
  - 100% federal share
  - 83 FEMA provided mobile homes
- Other Needs Assistance - \$3,838,953
  - 75% federal share
  - 25% state share
    - \$959,739
- Disaster Recovery Centers - 14
  - 7,504 visits
    - 100% federal for facilities, equipment, phones, etc.
    - 100% state expense for staffing state employees
      - Revenue, SRS, KDEM, KDHE, etc.

28

---

---

---

---

---

---

---

---

## Individual Assistance

- Small Business Administration (SBA) loans
  - \$27,334,700
    - 389 approvals
    - 100% federal share
- Disaster Unemployment Assistance -
  - \$110,647
    - 795 weeks approved
    - 65 applications approved
    - 100% federal share

29

---

---

---

---

---

---

---

---

## Public Assistance

- Category A
  - Debris Removal
    - \$735,568
      - Spiller responsible for oil contaminated disaster debris
- Category B
  - Emergency Protective Measures
    - \$2,635,155
- Category C
  - Roads
    - \$8,018,618

30

---

---

---

---

---

---

---

---



<b>Public Assistance</b>
<ul style="list-style-type: none"> <li>• <b>Category D</b> <ul style="list-style-type: none"> <li>- Water Control Facilities           <ul style="list-style-type: none"> <li>• \$934,782</li> </ul> </li> </ul> </li> <li>• <b>Category E</b> <ul style="list-style-type: none"> <li>- Public Buildings           <ul style="list-style-type: none"> <li>• \$3,859,870</li> </ul> </li> </ul> </li> <li>• <b>Category F</b> <ul style="list-style-type: none"> <li>- Utilities           <ul style="list-style-type: none"> <li>• \$8,402,646</li> </ul> </li> </ul> </li> </ul>
31

---

---

---

---

---

---

---

---

<b>Public Assistance</b>
<ul style="list-style-type: none"> <li>• <b>Category G</b> <ul style="list-style-type: none"> <li>- Recreational or other           <ul style="list-style-type: none"> <li>• \$490,743</li> </ul> </li> </ul> </li> <li>• <b>Total all categories</b> <ul style="list-style-type: none"> <li>- \$25,077,385           <ul style="list-style-type: none"> <li>• 10% state share               <ul style="list-style-type: none"> <li>- \$2,507,738</li> </ul> </li> </ul> </li> </ul> </li> </ul>
32

---

---

---

---

---

---

---

---

<b>Emergency Support Functions</b>
<ul style="list-style-type: none"> <li>• <b>ESF #1 – Transportation</b> <ul style="list-style-type: none"> <li>- Kansas National Guard           <ul style="list-style-type: none"> <li>• resources and commodities</li> <li>• SEOC operations</li> </ul> </li> <li>- Kansas Highway Patrol           <ul style="list-style-type: none"> <li>• immunizations, water samples</li> <li>• SEOC operations</li> </ul> </li> </ul> </li> <li>• <b>ESF #2 – Communications</b> <ul style="list-style-type: none"> <li>- Kansas Department of Transportation           <ul style="list-style-type: none"> <li>• Communications on Wheels (COW)</li> <li>• SEOC operations</li> </ul> </li> </ul> </li> </ul>
33

---

---

---

---

---

---

---

---



### Emergency Support Functions

- **ESF #3 – Public works & engineering**
  - Kansas Department of Transportation
    - assessment of state highways
    - highways closures/openings and emergency road repair
    - SEOC operations
  - Kansas National Guard
    - debris estimating technical assistance

34

---

---

---

---

---

---

---

---

### Emergency Support Functions

- **ESF #5 – Emergency management**
  - Division of Emergency Management
    - SEOC management and operations – 24 hour staffing
    - assessments (needs and damage)
    - mission assignments
    - coordinate response and recovery missions
    - prepare disaster declaration requests
    - situational awareness
    - field operations
  - Civil Air Patrol
    - aerial assessments
  - Kansas Highway Patrol
    - aerial assessments

35

---

---

---

---

---

---

---

---

### Emergency Support Functions

- **ESF #6 – Mass care**
  - American Red Cross
    - shelter, mass feeding
    - SEOC operations
  - Department of Administration
    - special needs population

36

---

---

---

---

---

---

---

---



## Emergency Support Functions

- **ESF #7 – Resource management**
  - Division of Emergency Management
    - coordination of all disaster-related resources
  - Kansas National Guard
    - SEOC operations

37

---

---

---

---

---

---

---

---

## Emergency Support Functions

- **ESF #8 – Health & medical**
  - Kansas Department of Health & Environment
    - Hospital and critical care nursing facilities
    - Immunizations
    - Public health recommendations
    - Water testing
    - Technical assistance to water treatment providers and county public health providers
    - SEOC representative
    - field operations
- **ESF #9 – Search & Rescue**
  - Kansas National Guard
    - door-to-door searches
  - Water Rescue Teams
    - Swift water rescues

38

---

---

---

---

---

---

---

---

## Emergency Support Functions

- **ESF #10 – Hazardous Materials**
  - Kansas Fire Marshal
    - Regional Hazmat Team
  - Kansas Department of Health & Environment
    - technical assistance
    - personal protective equipment
- **ESF #11 – Natural Resources**
  - Division of Emergency Management
    - levee and water shed district inspection
  - Kansas Department of Agriculture
    - food safety inspections
  - Kansas Animal Health
    - Inspections of oil contaminated land and cattle feed
    - veterinary services

39

---

---

---

---

---

---

---

---



## Emergency Support Functions

- ESF #13 – Public Safety
  - Kansas Highway Patrol
  - Kansas National Guard
    - augmented local jurisdictions
    - SEOC operations
- ESF #15 – External Affairs
  - The Adjutant General's Department
  - Governor's Office

40

---

---

---

---

---

---

---

---

Severe storms and flooding  
beginning May 2007

DR-1699-KS

41

---

---

---

---

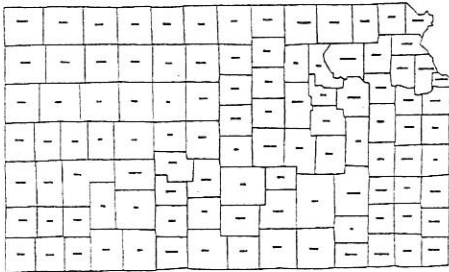
---

---

---

---

Severe Storms and Flooding  
DR-1699-KS



42

---

---

---

---

---

---

---

---



### Incident Overview

- **May 4<sup>th</sup>**
  - State Emergency Operations Center (SEOC)
    - Level 4 – 24 hour operations
      - Emergency Management and National Guard staff
- **May 5<sup>th</sup>**
  - Governor's declaration
    - Kansas Response Plan activated
  - Governor requests President for a major disaster declaration for Kiowa County

43

---

---

---

---

---

---

---

---

### Incident Overview

- **May 6<sup>th</sup>**
  - President declares major disaster declaration for Kiowa county for Individual and Public Assistance
- **May 11<sup>th</sup>**
  - President approves Individual Assistance
    - Edwards, Pratt, Stafford
- **May 18<sup>th</sup>**
  - President approves Individual Assistance
    - Barton, Osborne, Ottawa, Phillips,
  - President approves Public Assistance
    - Edwards, Pratt
  - Incident period closed

44

---

---

---

---

---

---

---

---

### Incident Overview

- **May 24<sup>th</sup>**
  - President approves Public Assistance
    - Comanche, Dickinson, Ellsworth, Jackson, Lincoln, Osage, Ottawa, Pottawatomie, Wabaunsee
- **May 25<sup>th</sup>**
  - President approves Individual Assistance
    - Clay, Cloud, Comanche, Leavenworth, Lyon, Reno, Rice, Saline, Shawnee
- **June 1<sup>st</sup>**
  - President approves Individual Assistance
    - Riley
  - President approves Public Assistance
    - Chase, Cherokee, Doniphan, Douglas, Harper, Kingman, Nemaha, Riley, Washington

45

---

---

---

---

---

---

---

---



### Incident Overview

- June 11<sup>th</sup>
  - President approves Individual Assistance
    - Dickinson, Ellsworth
- June 15<sup>th</sup>
  - President approves Individual Assistance
    - Osage
- June 19<sup>th</sup>
  - President approves Public Assistance
    - Brown
  - President approves 100% federal funding for 72 hours for debris removal and emergency protective measures

46

---

---

---

---

---

---

---

---

### Incident Summary

- June 29<sup>th</sup>
  - Individual Assistance registration period is extended 30 days
- July 13<sup>th</sup>
  - Incident period is reopened and extended to June 1<sup>st</sup>
- July 18<sup>th</sup>
  - President approves Individual Assistance
    - McPherson, Smith, Pottawatomie
  - President approves Public Assistance
    - Cowley, Harvey, Marshall, McPherson, Morris, Pawnee, Smith

47

---

---

---

---

---

---

---

---

### Incident Overview

- 15 storm-related fatalities
  - Kiowa (12)
  - Stafford (1)
  - Pratt (1)
  - Ottawa (1)
- 63 critical storm-related injuries
- 2 shelters
  - Kiowa County
- Number of utility poles at peak 6,740
  - Midwest Energy (4,800)
  - Ninescah - (1,940)

48

---

---

---

---

---

---

---

---



## Incident Overview

- State mission assignments – 669
  - emergency services (236)
  - local government assistance (171)
    - includes Incident Management Teams
  - debris removal (83)
  - logistics/supplies (53)
  - health & safety (49)
  - facilities & utility restoration (30)
  - transportation (18)
  - aerial damage surveys (15)
  - communications (14)

49

---

---

---

---

---

---

---

---

## Federal Assistance

- Total missions – 60
  - Total \$13,010,500
- Total direct federal assistance
  - 9 missions
  - Federal Share \$5,915,000
  - State Share \$1,478,750
    - 100% federal cost share adjustment not included
- Urban Search & Rescue
  - Total \$329,284
  - State Share \$82,321

50

---

---

---

---

---

---

---

---

## Individual Assistance

- Total registrations – 4,588
- Housing assistance \$8,044,087
  - 100% federal share
  - 194 FEMA provided mobile homes occupied
- Other Needs Assistance - \$1,853,391
  - 75% federal share
  - 25% state share
    - \$413,340
- Disaster Recovery Centers - 9
  - 5,468 visits
  - 100% federal for facilities, equipment, phones, etc.
  - 100% state expense for staffing
    - Revenue, SRS, KDEM, KDHE, etc.

51

---

---

---

---

---

---

---

---



### Individual Assistance

- Small Business Administration (SBA) loans
  - \$41,738,600
    - 577 approvals
    - 100% federal share
- Disaster Unemployment Assistance
  - \$111,931
    - 609 weeks approved
    - 46 applications approved
    - 100% federal share

52

---

---

---

---

---

---

---

---

### Public Assistance

- Category A
  - Debris Removal
    - \$4,700,000
- Category B
  - Emergency Protective Measures
    - \$6,075,000
- Category C
  - Roads
    - \$15,400,000

53

---

---

---

---

---

---

---

---

### Public Assistance

- Category D
  - Water Control Facilities
    - \$214,000
- Category E
  - Public Buildings
    - \$13,500,000
- Category F
  - Utilities
    - \$27,000,000

54

---

---

---

---

---

---

---

---



**Public Assistance**

- **Category G**
  - Recreational or Other
    - \$1,600,000
  
- **Total all categories**
  - \$68,489,000
    - 10% state share
      - \$6,848,900
    - Greensburg's 15% share
      - \$25,216

55

---

---

---

---

---

---

---

---

**Emergency Support Functions**

- **ESF #1 – Transportation**
  - Kansas National Guard
    - resources
    - SEOC operations
  
- **ESF #2 – Communications**
  - Kansas Department of Transportation
    - Communications on Wheels (COW)
    - SEOC operations
  - Kansas National Guard
    - emergency communication
  - Kansas Highway Patrol
    - emergency communication

56

---

---

---

---

---

---

---

---

**Emergency Support Functions**

- **ESF #3 – Public works & engineering**
  - Kansas Department of Transportation
    - debris removal
    - field staff
    - SEOC operations
  - Kansas National Guard
    - debris removal
    - field staff
    - SEOC operations

57

---

---

---

---

---

---

---

---



## Emergency Support Functions

- **ESF #5 – Emergency Management**
  - Division of Emergency Management
    - SEOC management and operations – 24 hour staffing
    - assessments (needs and damage)
    - mission assignments
    - coordinate response and recovery missions
    - prepare disaster declaration requests
    - situational awareness
    - field staff
  - Civil Air Patrol
    - Aerial assessments
  - Kansas Highway Patrol
    - Land and aerial assessments

58

---

---

---

---

---

---

---

---

## Emergency Support Functions

- **ESF #6 – Mass Care**
  - American Red Cross
    - Shelter and mass feeding
    - SEOC operations
  - Salvation Army
    - mass feeding
    - donations – services and supplies
  - United Way of the Plains
    - donations – cash
  - Southern Baptists
    - mass feeding
  - Department of Administration
    - Special needs population

59

---

---

---

---

---

---

---

---

## Emergency Support Functions

- **ESF #7 – Resource Management**
  - Division of Emergency Management
    - Coordination of all disaster-related resources
    - SEOC operations
    - field operations

60

---

---

---

---

---

---

---

---



### Emergency Support Functions

- **ESF #8 – Health & Medical**
  - Kansas Department of Health & Environment
    - hospital and critical care nursing facilities
    - immunizations
    - technical assistance to county public health
    - SEOC representative
    - public health recommendations
    - behavioral health
    - field operations
  - Kansas National Guard
    - EMEDs
- **ESF #9 – Search & Rescue**
  - Kansas National Guard
  - Civil Air Patrol

61

---

---

---

---

---

---

---

---

### Emergency Support Functions

- **ESF #10 – Hazardous Materials**
  - Kansas Fire Marshal
    - Regional Hazmat Teams
    - SEOC operations
    - field operations
  - Kansas Department of Health & Environment
    - debris sorting - landfill
    - household hazardous waste
    - field staff
    - SEOC operations
    - field operations
  - Division of Emergency Management
    - coordination and technical assistance
    - field operations

62

---

---

---

---

---

---

---

---

### Emergency Support Functions

- **ESF #13 – Public Safety**
  - Kansas Highway Patrol
    - augmented local jurisdictions
    - SEOC operations
- **ESF #15 – External Affairs**
  - The Adjutant General's Department
  - Governor's Office
    - joint information system and joint information center
    - field operations

63

---

---

---

---

---

---

---

---



# Federal thresholds

## Public Assistance Program

County \$3.05 per capita

State \$1.22 per capita

Kansas Population 2,688,418

*\$3,279,870*

**75% federal funds/25% non-federal share**

**Historically 15% local/10% state**

## Individual Assistance Program

### Small Business Administration

- 25 homes and/or businesses with more than a 40% uninsured loss

### FEMA Programs

- 100 major/destroyed homes
- \$3 million uninsured housing loss
- Economic impact, fatalities, demographics

Food, fuel and generators not eligible

**75% federal funds/25% non-federal**





## kansasmunicipalutilities

### MUNICIPAL ELECTRIC UTILITY ICE STORM RESPONSE

December ice storms spread across Kansas causing significant damage to electric utilities including many municipal systems. As calls started pouring in, municipal electric utility crews responded – assessing the damage and organizing restoration efforts. Several systems experienced such extensive damage that mutual aid efforts were activated. However, because the storm covered such an extensive area, many utilities had to take care of their own systems before helping others. In addition, electric line contractors were also in short supply given the need for storm restoration services across the entire region further complicating local restoration.

Electric crews from 23 municipal electric systems through the Kansas Municipal Energy Agency (KMEA) mutual aid program were activated and mobilized to help restore electric services to 10 significantly damaged municipal systems. Those cities receiving mutual aid through that program included: Clay Center, Herington, Holton, Horton, Larned, Pratt, St. John, Sterling, and Wamego. In addition, crews from eight municipal systems were on the scene to help restore electric service to the small city of Chetopa in Southeast Kansas. Chetopa received nearly two inches of ice crippling the community's entire electric system. Other communities not a part of the mutual aid program also received serious damage requiring assistance. With the intensive restoration efforts, only one municipal employee injury was reported.

However, there were some municipal shining stars that were able to keep the lights on while wholesale suppliers could not supply electricity due to storm damage. For example, the City of Chapman ran its new electric generating plant to power the entire community while its neighboring communities, such as Abilene, remained in the dark. While it was repairing downed lines, the City of Sterling was the only community in Rice County with electrical power for several days because of its community-owned diesel-fired power plant. Several communities have expressed a much greater appreciation for their city-owned generating capabilities. In addition, the Kansas City Board of Public Utilities had initial outages of 35,000 customers. That number was reduced throughout one night to 10,000 customers and arrangements were made for customers for food and shelter assistance with the local Red Cross.

At this point in time, KMU does not have complete information on the dollar value of damages experienced by its member cities because these communities have had to deal with issues beyond just the electric utility damage. They have also been working to restore and maintain their other community operations including water, wastewater, public safety, debris removal, emergency shelters, and other emergency-related operations. This storm has caused millions of dollars in damages to these communities that are still being tabulated.

The municipal utility community is a tight-knit group that pulls together in times of crisis to help one another. These situations have demonstrated the need for an effectively coordinated effort to respond to emergencies impacting publicly operated utility systems including electric, natural gas, water, and wastewater systems, and KMU will be working together with its members to continue improving the response system. Kansas has always had a strong concept of neighbor helping neighbor, and a strong mutual aid program demonstrates that ideal as communities work together in times of crisis.

*ENERGY AND HOUSE UTILITIES*

DATE: 1/17/2008

ATTACHMENT 7