

Approved: 2/07/07
Date

MINUTES OF THE SENATE AGRICULTURE COMMITTEE

The meeting was called to order by Chairman Mark Taddiken at 8:30 a.m. on January 23, 2007 in Room 423-S of the Capitol.

All members were present except:

Janis Lee- excused
Derek Schmidt- excused

Committee staff present:

Raney Gilliland, Kansas Legislative Research
Art Griggs, Office of Revisor of Statutes
Judy Seitz, Committee Assistant

Conferees appearing before the Committee:

Tracy Streeter, Director, Kansas Water Office
DeWayne Craghead, Hodgeman County Extension Agent

Others attending:

See attached list.

Chairman Taddiken welcomed members of the Kansas Livestock Association Leadership Conference to the Committee meeting and asked each visitor to give their name and where they are from.

Chairman Taddiken moved the introduction of a resolution (a Committee resolution)to allow interstate marketing of state inspected meat. Seconded by Senator Huelskamp. Motion passed.

The hearing on **SB - 60- Conservation districts, funding was continued.** Tracy Streeter, Director of the Kansas Water Office, presented testimony in favor of **SB 60 (Attachment 1)**. He said the additional funds are needed in order for conservation districts to deliver various statewide programs.

Mr. Streeter offered to stand for questions.

No opponents appeared on **SB 60.**

Hearings on **SB 60** were closed.

Senator Francisco moved that SB 60 be passed out favorably. Seconded by Senator Ostmeier. Discussion on the bill was held. Motion passed to report SB 60 passed out of Committee favorably.

Senator Taddiken noted that the Committee has a copy of a Resolution passed by the State Association of Kansas Watersheds (SAKW) in support of **SB 60 (Attachment 2)**.

Raney Gilliland, Kansas Legislative Research, reviewed **SB 19 - County fairs levy for buildings and grounds and maintenance.** A bill was introduced in 2006 to repeal K.S.A.2-131d. The bill was heard in this Committee last year and referred to an interim committee for further study.

DeWayne Craghead, Hodgeman County Extension Agent, spoke in favor of **SB 19 (Attachment 3)**. He said the statute was created in 1951 and \$3,000 does not go as far as it once did. **SB 19** would increase the levy to a maximum of \$33,000.

Mr. Craghead offered to stand for questions.

No opponents to **SB 19** appeared. The hearing was closed on **SB 19.**

The meeting was adjourned at 8:55 a.m.

The next meeting will be held January 24 at 8:30 a.m. in Room 423-S.

SENATE AGRICULTURE COMMITTEE GUEST LIST

DATE: January 23, 2007

| NAME | REPRESENTING |
|--------------------------|--------------------|
| DeWayne J. A. | Hg Co Fair |
| Mark Him | SCC |
| Erik W. Soren | KDA |
| Renee Klinges | Senator Pyle |
| CV Cotsozadis | KDA |
| Scott Carlson | SCC |
| John Ferrel | KWO |
| Emily Gier | Hein Law Firm |
| Tracy Stuts | KWO |
| GREG A. FOLEY | SCC |
| Sharon Depp | KLA |
| Luke Theurer | KLA |
| Steve McNeeton | KLA |
| Amanda Chitwood | KLA |
| Michelle Wess | KLA |
| Scott James | KLA |
| Samuel Kobbil | KLA |
| John Gunn | Sen. Derek Schmidt |
| John A. Donley | KLA |

[Handwritten signature]



SENATE AGRICULTURE COMMITTEE GUEST LIST

DATE: January 23, 2007

| NAME | REPRESENTING |
|-----------------|---------------------|
| Kim Leeper | KLA |
| Scarlett Hagins | KLA |
| Kate Subany | Keeney & Associates |
| David Schubert | KLA |
| Tom May | KLA |
| James S. Bonds | KLA |
| Shilo Cagers | KLA |
| Eric [unclear] | KLA |
| Trey Mize | KLA |
| Mike Spindler | KLA |
| BRYAN RICKARD | KLA |
| Jim Wenger | KLA |
| Ryan Higbie | KLA |
| David R Cross | KLA |
| | |
| | |
| | |
| | |
| | |



K A N S A S

TRACY STREETER, DIRECTOR

KANSAS WATER OFFICE

KATHLEEN SEBELIUS, GOVERNOR

**Testimony on SB 60
Conservation District Funding**

**Presented to
The Senate Agriculture Committee**

**Tracy Streeter
Kansas Water Office
January 16, 2007**

Chairman Taddiken and members of the Committee, I am Tracy Streeter, Director of the Kansas Water Office. I appreciate the opportunity to appear this morning to testify in support of Senate Bill 60.

Conservation districts are responsible for the local administration of several State Water Plan Programs, including the Water Resources Cost-Share, Non-Point Source Pollution Control, Riparian and Wetland Protection and the Kansas Water Quality Buffer Initiative. The state's ability to deliver these statewide programs hinges on the capability of conservation districts in each of the 105 counties.

The Kansas Water Authority meeting has expressed its support for enhanced State General Funds to match county funding for conservation districts and the legislation necessary to enable increased matching funds. A letter of support from the Water Authority is attached.

Thank you again for the opportunity to appear today. I would be happy to answer questions at the appropriate time.

*Senate Agriculture Committee
1-23-07
Attachment 1*

KANSAS WATER AUTHORITY

901 South Kansas Avenue, Topeka, KS 66612-1249 (785) 296-3185



Steve Irsik, Chairman

5405 Six Road, Ingalls, KS 67853

(620) 335-5363 - steve@ucom.net

January 10, 2007

Dear Senators and Representatives:

The Kansas Water Authority has developed FY2008 Budget Recommendations in its Annual Report to the Governor and Legislature for your consideration. Subsequent to these recommendations being approved, the Authority was presented with an issue by the Kansas Association of Conservation Districts because of funding cuts being made at the federal level.

Late last year, the USDA Farm Services Agency and the Natural Resources Conservation Service announced plans to close 11 of its offices in Kansas due to federal budget cuts. The Kansas Conservation Districts are commonly co-located with the federal offices, allowing cost savings and improved delivery of services and technical assistance to federal and state assistance programs. The proposed closure of USDA offices would eliminate many State Conservation Districts' ability to exist in these areas, subsequently reducing the effective delivery and implementation of state financial assistance programs. Conservation district operational expenses will increase without the co-location support of a USDA presence.

The proposal by the Kansas Association of Conservation Districts increases the amount of funds Conservation Districts are able to receive under State Aid to Conservation Districts. This county matching program provides a \$10,000 match to county provided funds for conservation district operation to implement state financial assistance and other programs. Currently, the Aid to Conservation Districts allocation is \$1,048,000. State appropriations supplement county allocated funds and are utilized by conservation districts for operational expenses including, but not limited to, salaries and wages; office supplies; equipment; information and education activities; and district supervisor and staff travel expenses. It also enables conservation districts to implement state cost-share conservation programs and other conservation programs.

The KWA is supportive of a proposal by the Kansas Association of Conservation Districts. An additional \$1,086,154 is requested from State General Fund for state fiscal year 2008 to increase the state appropriations to match county supplied funds, not to exceed \$25,000 per district, contingent on statutory change. The Kansas Water Authority supports legislative actions in revising K.S.A. 2-1907c to increase the state financial assistance to conservation districts to match county supplied funds, not to exceed \$25,000 per district. The provisions of K.S.A. 2-1907c authorizing state appropriations to match county supplied funds, not to exceed \$10,000 per district has been at the current funding level since 1994.

1-2

The increase will provide 96 county conservation districts with additional operating funds to assist with implementing natural resource programs to protect and enhance Kansas' natural resources. See the table (pages 49 & 50 of the SCC FY2008 Budget Request) listing the FY2007 county appropriations for each conservation district, eligible FY2008 match from the state, and the FY 2008 Proposed Match figures. Furthermore, the increase in matching funds will illustrate to county commissioners the state's commitment to conservation and provide an opportunity to take advantage of increased matching funds from the state.

This request would dovetail with a major proposal in the KWA's FY2008 Budget Recommendations which includes shifting funding for the State Conservation Commission's Aid-to-Conservation Districts to the State General Fund from the State Water Plan Fund. This shift in funding is part of a larger request that would make the same shift of funding for the KDHE Local Environmental Protection Program (LEPP); the KDHE Contamination Remediation Program; and the KDA, DWR Interstate Water Issues to the State General Fund. These funding recommendation shifts an additional \$4 million to be re-directed to address priority water projects across Kansas.

On behalf of the Kansas Association of Conservation Districts, the Kansas Water Authority respectfully requests legislative support of this proposal for FY2008.

Sincerely,

A handwritten signature in black ink, appearing to read "Steve Irsik". The signature is written in a cursive, somewhat stylized font.

Steve Irsik
Chairman

From: "Herb Graves" <sakwwatersheds@sbcglobal.net>
To: "Mark Taddiken" <taddiken@senate.state.ks.us>
Date: 1/22/2007 9:59 AM
Subject: SAKW Support for SB60
Attachments: SAKW 2007 resolution #1.doc

Senator Taddiken,

SAKW would like to submit our support for passage of SB 60. The Conservation Districts of Kansas are the key to continued natural resource protection in rural Kansas.

The attached file is the resolution that we passed at our recent annual meeting.

SAKW and the watershed districts of Kansas appreciate your support and service to us all.

Herbert (Herb) R. Graves Jr.
SAKW Executive Director
2830 Rain Road
Chapman, KS 67431
785-922-6664-Phone
785-263-6033-Cell

Senate Agriculture Committee
1-23-07
Attachment 2

RESOLUTION NO. 1: SUPPORT INCREASES TO THE STATE CONSERVATION COMMISSION BUDGET THAT WOULD PROVIDE AN OPPORTUNITY FOR COUNTY MATCHING FUNDS TO MAINTAIN SOIL AND WATER CONSERVATION DISTRICTS IN THOSE COUNTIES WHERE NRCS AND FSA CLOSURES WOULD OTHERWISE ELIMINATE THE LOCAL CONSERVATION DISTRICT OFFICE

WHEREAS, the proposed office closings announced by NRCS and FSA would also eliminate the Soil and Water Conservation District offices

WHEREAS, watershed district sponsorships by conservation districts will be lost in some cases

WHEREAS, the continuance of proper land treatment above project sites could be adversely affected

WHEREAS, the proposed FY2008 budget would increase from \$10,000 to \$25,000 the State/County matching fund program

THEREFORE, BE IT RESOLVED, that the State Association of Kansas Watersheds support improvements to the FY2008 State Conservation Commission budget to provide adequate funding matched by counties to maintain conservation districts in those counties where either or NRCS and FSA offices are closed.

Who am I?

I am a representative of the Hodgeman County Fair Association.

DeWayne Craghead, Hodgeman County Extension Agent, Agriculture – 16 yrs. as Agent in Hodgeman County, 11 year 4-H'er in Hodgeman County, and a 13 year project leader in 4-H between being a 4-H member and becoming the Extension Agent.

Why am I here?

To express my support for SB 19. In the packet, there are letters of support from one former Hodgeman County Commissioner and two personal letters of support from current Hodgeman County Commissioners. These letters were written for the Interim committee this fall to encourage them to introduce a bill.

Why am I supporting SB 19?

The statute 2-131d was created in 1951. The maximum amount allowed by the statute for building maintenance was set at \$3,000. It has been our understanding, the Commissioners have been unable to provide more support for maintenance. As we all know, \$3,000 does not go as far as it once did. Based on one inflation calculator this would be the same as \$21,500 in 2004.

In the past twelve (12) years, the Hodgeman County Fair Association has been able to survive from a series of grants from a foundation and many fund raisers. The foundation has provided \$62,000 over those twelve years. Without the grants, the Fair Association would have been in a tremendous amount of trouble. As an Association, there is a concern that the money from the foundation may soon stop.

The following table shows the Total Maintenance Expenses and Total Utility Expenses for the past few years.

| Year | Total Maintenance & Utility Expenses | Total Utility Expenses | |
|------|--------------------------------------|------------------------|--|
| 1999 | \$11,399 | \$2,100 | Purchased 15 new tables, one table rack and two chair carts |
| 2000 | \$23,694 | \$1,523 | Installed new heating & air conditioning in 4-H Building, livestock loading chute, cattle panels and speaker system. |
| 2001 | \$10,770 | \$3,170 | Electric and general repair. |
| 2002 | \$10,467 | \$2,829 | General repair and wash rack. |
| 2003 | \$22,755 | \$1,445 | Replaced old walk in doors on 4-H Building. |
| 2004 | \$12,515 | \$1,421 | Purchased continuous fence |
| 2005 | \$ 9,986 | \$3,338 | Moved dirt for Barbeque Memorial and installed continuous fence. |

As you can see, we spend considerably more than the \$3,000 per year we receive for maintenance. The facilities we had were built in the 1950's and 1960's for the most part, except for the 4-H Building (1980). They required quite a bit of maintenance.

This bill gives the Commissioners the ability to provide for more than \$3,000 for the purpose of raising funds to be used for the erection and maintenance of buildings or the purchase of supplies and equipment, which they are limited to now.

Senate Agriculture Committee
1-23-07
Attachment 3

Chapter 2.--AGRICULTURE

Article 1.--STATE AND OTHER AGRICULTURAL SOCIETIES AND FAIRS

2-131d. Certain counties having fair associations; tax levy for buildings and grounds, use of proceeds. The board of county commissioners of any county in which there is a county fair association officially recognized by the secretary of agriculture, upon the request of such fair association, may make an annual tax levy for the purpose of raising funds to be used for the purchase of grounds and the erection and maintenance of buildings of such fair associations and to pay a portion of the principal and interest on bonds issued under the authority of K.S.A. 12-1774, and amendments thereto, by cities located in the county. No levy shall exceed a rate, which multiplied by the total assessed tangible valuation of the county, will result in producing more than \$3,000 and an amount to pay a portion of the principal and interest on bonds issued under the authority of K.S.A. 12-1774, and amendments thereto, by cities located in the county in any one year. The tax levy authorized shall be in addition to all other tax levies authorized or limited by law and shall not be subject to or within the aggregate tax levy limit prescribed by K.S.A. 79-1947, and amendments thereto. The amount collected by the county for such purpose, except for an amount to pay a portion of the principal and interest on bonds issued under the authority of K.S.A. 12-1774, and amendments thereto, by cities located in the county, shall be paid to such fair associations for the purposes herein specified, upon request of such fair association. The fair association may use any portion of this amount, not needed for purchase of grounds and the erection and maintenance of buildings, to supplement and increase premiums and awards for exhibitions by 4-H members and organized F.F.A. members.

History: L. 1951, ch. 6, § 1; L. 1969, ch. 1, § 1; L. 1979, ch. 52, § 17; L. 2004, ch. 101, § 6; July 1.

Usage of 4-H Building and Fairgrounds

2006 - 30.1% of the time

2005 - 30.6% of the time

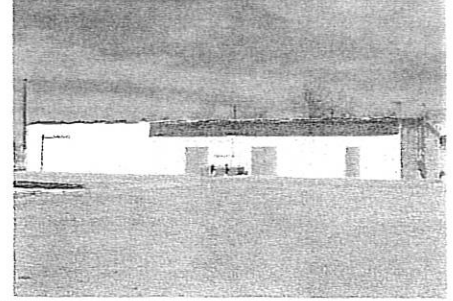
During the last two years, the 4-H Building has been used for the following: 4-H Meetings, 4-H Project Meetings, Health Dept., Emergency Services Meeting, Emergency Preparedness Meetings, Extension Meetings, D.C. Coop Information Meeting, Right Coop Management Meeting, Weddings, Fire Fighters Meal, Birthday Parties, Bioterrorism Regional Meeting, Animal Quality Assurance Meeting, Red Cross Disaster Training, Fair Board Meetings, Family Reunion, Hodgeman County 4-H Fair, Prime Time summer youth program, Methodist Church Meal, Annual Meeting for City of Jetmore, NRCS Informational Meeting, FSA Informational Meeting, Tool Sales, Estate Auctions, Fund Raisers for County patrons having an emergency, Baby Sitting Clinic, FCE-Family Consumer Education Spring and Fall Workshops, FCE unit meeting, Graduation Parties, Anniversary Celebrations, 4-H Council, 4-H Officers Training, 4-H Record Book Training, Jetmore Motorplex Annual Meeting, Livestock Judging Contests, Livestock Shows, and misc. events.

It is also the Emergency Site for the Hodgeman County Health Department, Hodgeman County Hospital, Hodgeman County Long Term Care, and Jetmore School system.

Facilities

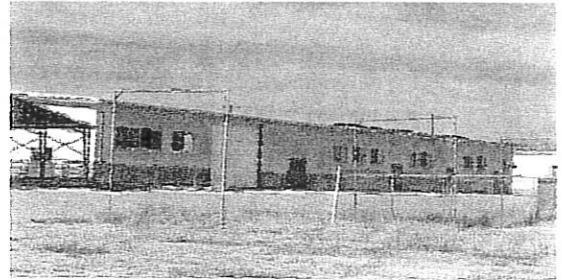
4-H Building - 48' x 100' x 14' metal building built 1980

- Air conditioning installed (1997-99)
- Bathrooms with one shower in each
- Small Kitchen
- Furnace Room
- Has a small meeting room which can open up into the large room



Livestock Pavilion/Community Facility - Overall size (70' x 169' x 16')

- Metal building built for USD #227 in the late 1960's
- It is actually two buildings butted together.
- Originally, sidewalls were 12'
- The buildings were moved to the grounds in April 2006 and set on a 4' cement stem wall.
- Handicap accessible sidewalk was poured in front of the building.



Livestock Pavilion - (70' x 71')

- This end of building houses show arena.
- Need to complete electrical needs and speaker system.

Community Facility - (70' x 98') this end of the building is being developed

Suggestions for this end of the building include:

- An ADA approved set of bathrooms,
- A commercial sized kitchen,
- Storage areas,
- A concession stand,
- An open area for conventions, dances, etc.
- Recreation center

To complete the Community Facility, the Fair Board is looking for private funds, grants, having fund raisers, and income from selling advertisement to complete the facilities. They are not looking to use any tax money to complete the project. They are only looking at tax money for maintenance (2-131d currently) and fair premiums (2-131).

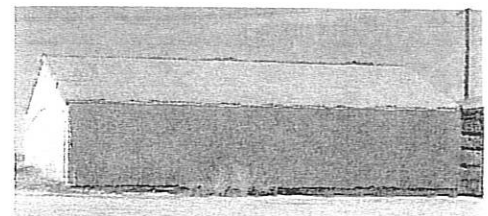
Livestock Barn - 44' x 100' x 10' metal pole building initially built in 1967, lengthened in 1996

- Presently houses sheep, swine, dairy, goats, bucket calves, steers, and breeding beef.



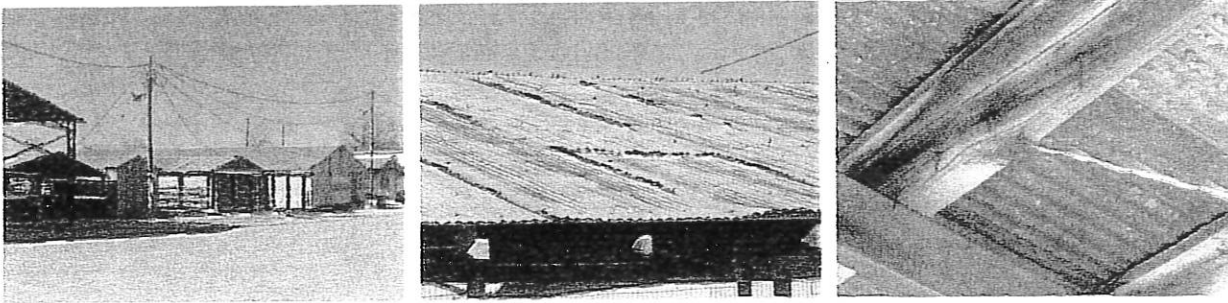
Cuckler Building - 30' x 40' metal building built in the late 1960's

- Presently houses the livestock scales and is used for storage.

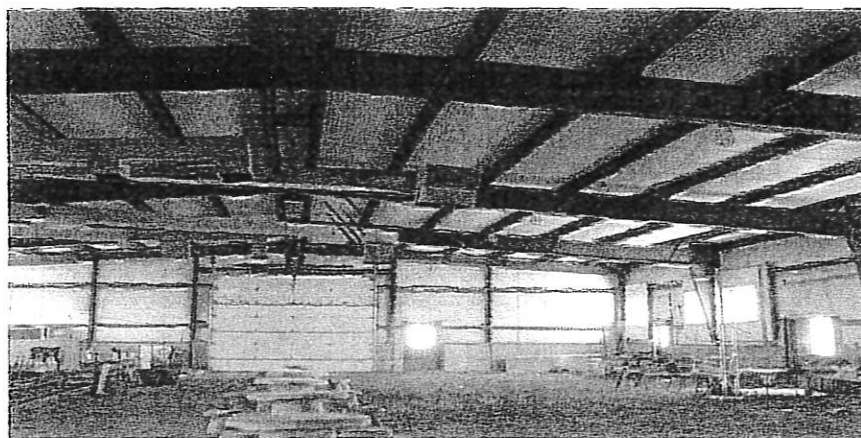
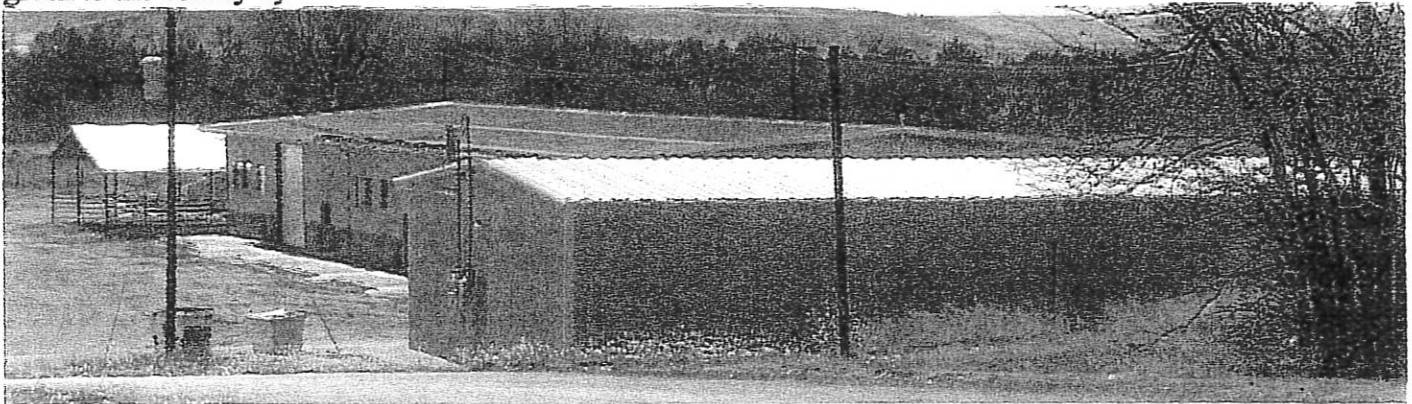


**Looking to the Future-the Latest Building Project
Demolition to Reconstruction**

Pictured are some of the buildings that were replaced in 2006. The buildings included: beef shed, swine shed, sheep barn, horse barn, breeding beef barn, and rabbit facilities.



These buildings were replaced by the Livestock Pavilion/Community Facility which was the building given to the county by USD #227.



November 21, 2006

To the Senate Interim Agriculture Committee,

As a former Hodgeman County Commissioner and a former Hodgeman County Fair Board member, I would like to address the committee on the proposed change in state statute for the Hodgeman County Fair Association.

We struggled to make ends meet, when I was on the Fair Board fourteen years ago. I served on the Fair Board for eighteen years. Each year was more and more challenging with inflation to survive and provide a fair. I can only imagine how they are coping now.

As a Hodgeman County Commissioner from 1980 to 1988, I also had my hands tied by Kansas Statute 2-131d.

Having served in both of these organizations, I am in favor of upgrading this out dated statute. With the change, it would enable the County Commissioners to provide financial increases if necessary.

Thank you for your consideration.

Sincerely,

A handwritten signature in cursive script that reads "Darrell Craghead". The signature is written in black ink and includes a long, sweeping horizontal line at the end.

Darrell Craghead
RR 2 Box 111
Jetmore, KS 67854

November 24, 2006

To the Senate Interim Agriculture Committee,

I am a long time supporter of the Hodgeman County Extension Service. I served for many years on the Hodgeman County Extension Board as well as being a 4-H Leader for over 30 years. I am presently serving in my 10th year on the Hodgeman County Commission. This interest was only natural for me, as my father was also a Hodgeman County Extension Board member and also served for many years as the President of the Hodgeman County Fair Board.

They worked hard then to provide both a great 4-H fair and to build a new building that could serve the community in many capacities. I know they continue to struggle with available funds for maintenance and upkeep of these facilities.

I support the request to upgrade this statute in order that we can maintain our fair grounds and our facilities in a way in which we can be proud.

Thank you for your time and consideration in the matter.

Sincerely,

Marsha L. Ewy

Marsha L. Ewy
727 Roughton
Jetmore, Kansas 67854



K-State Research and Extension
Hodgeman County
Courthouse
P.O. Box 38
Jelmore, KS 67854-0038
620-357-8321
Fax: 620-357-8323
E-mail: hg@lists.oznet.ksu.edu

November 21, 2006

To the Senate Interim Agriculture Committee,

As the Hodgeman County Extension Agent, Agriculture, for the last 16 years, I have seen expenses for the Hodgeman County Fair Association rise considerably, especially in utilities and maintenance.

The Hodgeman County Fair Board has aggressively searched for funding from non-traditional sources. One foundation has provided \$62,000 through ten grants over the last twelve years. As a group, the Fair Board questions how much longer this foundation will support them.

Last year's request of \$10,000 from this grant was approved for doors, cement, and electricity in the abandoned school building recently moved to the fairgrounds. USD #227 gave the building to Hodgeman County for use as a Fair Building. With the increase in building space comes a corresponding increase in maintenance costs.

With the proposed change, the Hodgeman County Commissioners, will still decide on the amount of the budget, except the maximum amount which could be requested and approved would increase from \$3,000 to one mill.

This proposal allows for more flexibility for the Commissioners.

I have supporting documents which are included in your packet.

DeWayne Craghead
KSU-Hodgeman County Extension Agent, Agriculture
Box 38
Jelmore, KS. 67854
620-357-8321

Hodgeman County
Kansas State University
Agricultural Experiment
Station and Cooperative
Extension Service
K-State, County Extension
Councils, Extension Districts,
and U.S. Department of
Agriculture Cooperating.
K State Research and
Extension is an equal
opportunity provider and
employer.

"Knowledge
for Life"
3-7

November 28, 2006

To the Senate Interim Agriculture Committee,

I would like to make a comment on the proposed change in state statute for the Hodgeman County Fair Association.

Hodgeman County has developed many youth and sent them into the work force throughout Kansas and the United States. One of the annual events that showcase the many talents of the youth is the Hodgeman County Fair. I support raising the maximum amount the Fair Board is allowed to receive from the Commissioners from \$3,000 to one mill upon approval of the Hodgeman County Commissioners.

I am currently serving as a Hodgeman County Commissioner and I would appreciate the flexibility to help with the rising costs associated with maintaining the Fairgrounds.

Thank you for your attention to this matter.

Sincerely,



Larry Nuss