

Approved: March 2, 2006

Date

MINUTES OF THE SELECT COMMITTEE ON SCHOOL FINANCE

The meeting was called to order by Chairman Kathe Decker at 9:00 A.M. on February 14, 2006 in Room 313-S of the Capitol.

All members were present.

Committee staff present:

Kathie Sparks, Kansas Legislative Research
Ann Deitcher, Committee Secretary

Dale Dennis introduced Linda O'Brien who spoke to the Committee on Career and Technical Education (CTE) as an essential component of the total educational system in the United States. (Attachment 1 and 2). She also spoke of the Kansas Family and Consumer Sciences Education regarding Balancing Career and Family as well as Career and Life Planning. (Attachment 3 and 4).

Chairperson Decker called the Committee's attention to the Legislative Research Department's Technical College Program List, (Attachment 5) and a copy of acceptable CIP codes for each institution, (Attachment 6).

A Career and technical Education Fact Sheet from the Department of Education was distributed. (Attachment 7).

Copies of Select Committee minutes for the meetings of February 7 and 8 were distributed for the Committee's approval.

The meeting was adjourned at 10:25. The next meeting is scheduled for Tuesday, February 15, 2006.

What is Career and Technical Education?

Career and Technical Education (CTE) is an essential component of the total educational system in the United States. Career technical education provides students with the technical skills, knowledge and training necessary to prepare for postsecondary education and succeed in careers. CTE focuses on high skill and high wage that prepare students for family sustaining careers. It also prepares students for careers by introducing student to the workplace competencies that are essential no matter what career they choose.

There are courses and programs that range from exploratory – helping students figure out their strengths and interests – to specific technical training. Many states are organizing career technical education offerings around career clusters. Career clusters identify pathways from secondary school to postsecondary education and the workplace, so students can have a smooth transition from high school to their next step in life, whether that is college and/or a career. Several years ago, the U.S. Department of Education organized federal reporting requirements around the following 16 career clusters, which represent the breadth of programs areas that are part of CTE.

What is a Career and Technical Education program?

In Kansas a state approved secondary CTE program is a sequence of at least three courses, two of which are above the introductory level and are approved for state funding.

Kansas secondary schools have 1512 approved CTE programs. Additional secondary students also receive CTE instruction through approved postsecondary programs in technical schools, technical colleges and community colleges.

Approved programs include academic and technical skill competencies to prepare students for postsecondary education and careers. Core competencies are included in the CTE program standards and are updated when standards are revised on a five year cycle. Program Standards are reviewed and revised with leadership from local employers, employees, secondary and postsecondary educators and other community members. Each local USD program also has an advisory committee that helps customize programs for local needs.

Explanation of program areas in high schools

Agricultural Education – Prepares students in agricultural science, agricultural business, horticulture and agricultural economics.

Business Education – Offers programs in business and computer technology, E-commerce, network administration, web services, video and graphic production, telecommunications and information technology.

Select Comm. on School Finance
Date 2-14-06
Attachment # 1-1

Family and Consumer Sciences Education - Prepares students for unpaid employment with skills in parenting, balancing work and family, nutrition and wellness, career and life planning, and consumer resource management. Specific paid career preparation is offered in culinary arts and hospitality, early childcare management, and fashion and interiors.

Health Careers Education - Offers programs for students to explore a wide range of health related careers including occupational therapy, physical therapy, nursing, emergency medical services, dental, surgical and radiological careers.

Marketing Education – Prepares students for employment in such areas as marketing management and entrepreneurship.

Technology Education – Provides career exploration experiences and improves technology literacy. Programs include communications technology, production technology and pre-engineering.

Trade and Industry – Provides training in areas such as construction, woodworking and millwork, precision machining, auto technology, drafting and design and computer repair.

Career and Technical Education Accountability

Federal accountability for Perkins funds is based upon student completer data. A secondary career and technical education completer is a 12th grade student who has had three or more courses in a specific program sequence. One course can be introductory and unfunded. The student must also have met 80% of the program competencies and graduated on time. 18,186 secondary students officially completed approved CTE programs. The 2005 data collection system did not provide the total number of Kansas students that took one or more CTE course but did not meet all of the completer requirements.

Perkins Allocations to local schools

44 Unified School Districts meet the \$15,000 federal minimum allocation and are direct recipients of Perkins federal funds. The additional 234 Districts that are eligible for Perkins funds have formed consortia to meet the \$15,000 minimum requirement.

Federal Perkins Funds

Secondary Improvement	\$5,001,396
Competitive Tech-Prep Grants for secondary and post-secondary	\$1,041,873
Statewide Activities	\$ 436,198
Administration and Leadership Activities	\$ 634,855
	\$7,114,322

As in No Child Left Behind (NCLB) and other federal programs, states are responsible for student success. NCLB uses Annual Yearly Progress (AYP) to identify student progress. Since the last authorization of Perkins legislation in 1998 Career and Technical Education has been responsible for showing annual improvement in CTE student success. During the 2004-2005 school year students within Kansas Career and Technical Education programs have exceeded all accountability measures.

INDICATOR	ACCOUNTABILITY MEASURE	GOAL	ACTUAL	RESULT
Core #1	Academic Attainment	94.25	95.82	Exceeded
Core #1	Skill Attainment	95.00	100.00	Exceeded
Core #2	Completion	73.10	94.98	Exceeded
Core #3	Placement	82.00	88.47	Exceeded
Core #4	Nontrad.-Participation	32.75	44.74	Exceeded
Core #4	Nontrad.-Completion	25.25	96.96	Exceeded

Vocational Weighting (State Funds)

Funding generated under this provision of the state's school finance formula is determined by multiplying the full-time equivalent enrollment in vocational-technical programs approved by the State Board of Education by a factor of .5. Revenue generated by the weight must be spent for vocational education. Funding generated through this weighting totaled \$28.8 million for FY 2005.

What is secondary CTE contributing to Economic Development?

Federal Carl Perkins Career and Technical Education Funds are used in secondary programs that supports vocational-technical education courses directly related to preparing individuals for paid or unpaid employment in current or emerging occupations. Federal funds can be used for a wide range of programs, services, and activities designed to improve career-technical education programs and ensure access to students who are members of populations with special needs.

What are we doing?

We prepare Kansas secondary students to succeed in the workplace, in education and in life.

- Offer programs in more than 278 Unified School Districts and 330 high schools.
- Produce graduates with marketable job skills and nationally recognized industry certifications.
- Offer opportunities for students to gain leadership skills through program-related career and technical student organizations
- Collaborate with higher education for students to earn college credit
- Use curriculum that meets the needs of and has been validated by business and industry

Standards revision

- Business and Industry involvement in standards revision
- Update Competency Profiles
- Alignment/crosswalk with Kansas academic standards

Career Clusters and Career Pathways

- Alignment of career clusters with economic clusters
- Expansion of pathways from entry level through postsecondary education

Support for Kansas Industries

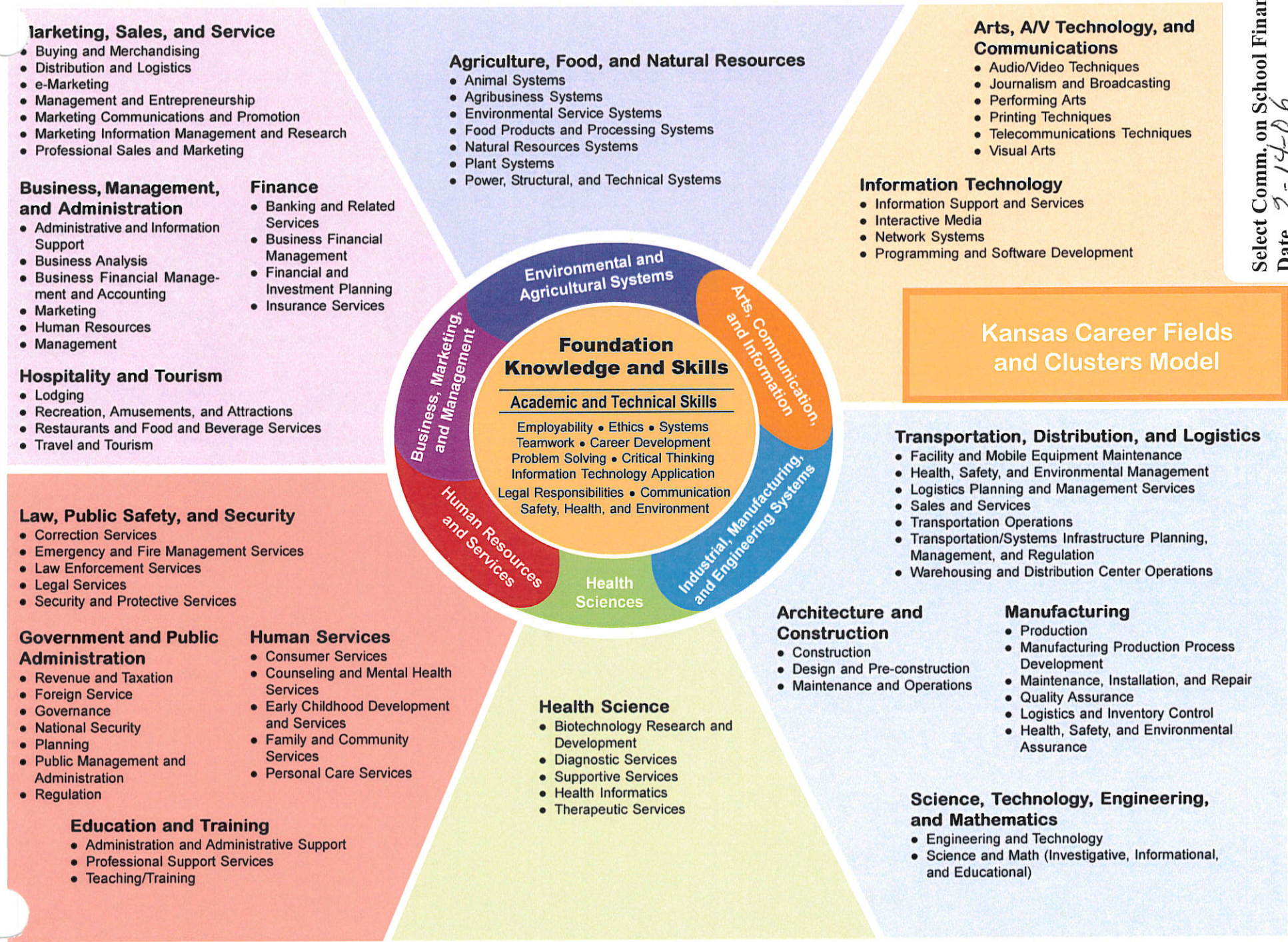
- Aerospace
- Value Added Agriculture Industry
- IT/Telecom Industry
- Bioscience Industry
- Energy
- Plastics/Advanced Manufacture Materials

Science, Technology, Engineering and Math (STEM)

- Pre-engineering programs (Project Lead the Way)
Kaufman Foundation announced \$1.8 million to match with business/industry funds for 5 Greater Kansas City counties.
- Pilot Aerospace Program
- In-development Bio-Science

We are securing Kansas's future by developing a world-class workforce.

We prepare Kansan's to succeed in the workplace, in education, and in life.



Kansas Career Fields and Clusters Model

Kansas Family and Consumer Sciences Education**Work and Family Studies Program**

Course: Balancing Career and Family

CIP Code: 19.0000 Course # BCF

Rating Scale: 3 Skilled- Works Independently
 2 Limited Skills- Requires Assistance
 1 Skill Undeveloped
 0 No exposure- No instruction or training

Directions: The following competencies are required for full approval for a course in a Family and Consumer Sciences Program. Check the appropriate number to indicate the level of competency reached for student evaluation.

Academic Foundations

Benchmark: 0.1 Apply reading and writing, math, and science skills in personal, professional, and community situations. (CC K&S)	3	2	1	0
0.1.1 Writes effectively for a variety of audiences, purposes, and contexts. (narrative, expository, technical, persuasive) (W1.4▲)				
0.1.2 Comprehends a variety of texts. (narrative, expository, technical, persuasive) (R1.4▲)				
0.1.3 Determines the meaning of words or phrases using context clues from sentences or paragraphs. (R1.3.1▲)				
0.1.4 Understands the purpose of text features and uses such features to locate information in and to gain meaning from appropriate-level texts. (R1.4.2▲)				
0.1.5 Uses information from the text to make inferences and draw conclusions. (R1.4.5▲)				
0.1.6 Adjusts original rational number estimate of a real-world problem based on additional information. (a frame of reference) (M1.3.A1▲) (\$) (M1.4.A1a,b,d▲) (\$)				
0.1.7 Generates and/or solves multi-step real-world problems with real numbers and algebraic expressions using computational procedures and mathematical concepts.				
0.1.8 Uses data analysis in real-world problems with rational number data sets to compare and contrast two sets of data, to make accurate inferences and predictions, to analyze decisions, and to develop convincing arguments from data displays. (M4.2.A1▲) (\$)				
0.1.9 Research, apply, and evaluate information to accomplish tasks. (CC K&S)				

Communications

Benchmark: 0.2 Demonstrate appropriate communication skills that contribute to positive relationships. (*13.3) (21 st)	3	2	1	0
0.2.1 Use appropriate communication strategies for most effective outcome. (*13.3.1) (CC K&S) (21 st)				
0.2.2 Use listening and writing skills appropriately to communicate clearly. (*13.3.2) (*13.3.3) (CC K&S) (21 st)				
0.2.3 Apply and/or interpret nonverbal communication to fully understand meaning. (CC K&S)				
0.2.4 Communicate respectfully and effectively with people of different cultures and diverse perspectives. (*13.3.5) (CC K&S) (21 st)				

Problem Solving and Critical Thinking

Benchmark: 0.3 Apply thinking and problem-solving processes to personal, professional and community issues. (21 st)	3	2	1	0
0.3.1 Clarify personal and family issues.				
0.3.2 Identify adequate, reliable information, and resources for personal and family problem solving. (CC K&S)				
0.3.3 Critique alternative methods of solving problems and accomplishing tasks. (CC K&S)				
0.3.4 Evaluate potential consequences of alternative choices. (CC K&S)				
0.3.5 Use criteria and standards to make ethical decisions. (21 st)				
0.3.6 Implement an action plan.				
0.3.7 Evaluate outcomes to measure progress. (CC K&S)				

(*) denotes National and Kansas (2000) Family and Consumer Sciences Standards (www.ksde.org)(21st) denotes 21st Century Learning Skills (www.21centuryskills.org)

(R) denotes Kansas Reading Curricular Standards

(H-G) denotes Kansas History & Government; Economics & Geography Curricular Standards

(\$) denotes National Standards for Financial Literacy

(M) denotes Kansas Mathematics Curricular Standards

(CC K&S) denotes Career Cluster Knowledge and Skills (www.careerclusters.org)

(▲) denotes assessed indicator for Kansas Assessment Tests

(W) denotes Kansas Writing Curricular Standards

Student:	Grade:	
Teacher:	School:	
Enrolled Date:	Completion Date:	Graduation Date:
Student Signature	Teacher Signature	

3-2

Information Technology Applications

Benchmark: 0.4 Use technology to access, manage, integrate, and create information. (CC K&S)		3	2	1	0
0.4.1	Use a variety of communication technologies to locate information and manage records for family, work, and community settings. (*13.3.6) (CC K&S) (21 st)				
0.4.2	Use technology to analyze, manipulate, and interpret information. (CC K&S) (21 st)				
0.4.3	Identify adequate, reliable information, and resources. (CC K&S)				

Safety, Health and Environmental

Benchmark: 0.5 Evaluate potential hazardous situations to defuse them and determine intervention strategies. (CC K&S)		3	2	1	0
0.5.1	Manage the physical and social environment to reduce conflict and promote safety in family, workplace, and community. (CC K&S) (21 st)				
0.5.2	Practice safety techniques to create a safe environment. (CC K&S)				
0.5.3	Understand how to document and report emergency/crisis situations and outcomes to the appropriate authorities. (CC K&S)				
0.5.4	Follow regulations, organizational policies, and procedures to assure a safe and healthy environment. (CC K&S) (GovB1i2▲ A)				

Leadership and Teamwork and Ethics and Legal Responsibilities

Benchmark: 0.6 Demonstrate leadership, citizenship, and teamwork skills required for success in the family, workplace, and community. (*13.5) (21 st)		3	2	1	0
0.6.1	Examine the FCCLA organization and its relationship to the family and consumer sciences curriculum.				
0.6.2	Recognize and model positive leadership and teamwork behaviors to inspire others. (CC K&S) (21 st) (H-G)				
0.6.3	Identify ways to be a responsible citizen in families, career, and communities. (GovB2i2▲ K)				
0.6.4	Recognize diverse abilities of team members. (21 st)				
0.6.5	Apply leadership, citizenship, and teamwork skills in authentic experiences. (21 st) (H-G)				
0.6.6	Demonstrate ethical behavior in personal, workplace, and community context. (21 st)				

Career Development and Systems

Benchmark: 0.7 Analyze strategies to manage the multiple individual, family, career, and/or community roles and responsibilities. (*1.1) (CC K&S) (21 st)		3	2	1	0
0.7.1	Analyze ways that individual career goals can impact the family's capacity to meet goals for all family members. (*1.1.3) (CC K&S)				
0.7.2	Analyze the potential impact of career path decisions on balancing work and family. (*1.1.4)				
0.7.3	Develop a life plan for achieving individual, family and/or career goals. (*1.1.6) (CC K&S) (21 st)				
0.7.4	Determine skills and knowledge needed for a life plan. (21 st)				
0.7.5	Demonstrate processes for cooperating, compromising and collaborating to achieve goals. (*13.5.7) (21 st)				

Technical Skills**COMPREHENSIVE STANDARD:** 4.0 Apply problem-solving processes to personal and family decisions for well-being of self and others.

Benchmark: 4.1 Enhance self-development throughout the life span.		3	2	1	0
4.1.1	Examine the effect of self-esteem and self-image on relationships. (*13.2.3)				
4.1.2	Determine stress management strategies for family, work, and community settings. (*13.1.6)				
4.1.3	Determine the roles of decision making and problem solving in reducing and managing conflict. (*13.4.3)				
4.1.4	Choose healthful and responsible ways to express self.				
Benchmark: 4.2 Analyze the reciprocal impact of individual and family participation in community activities. (*1.3)		3	2	1	0
4.2.1	Examine goals that support individuals and family members in carrying out community and civic responsibilities. (*1.3.1) (GovB2i2▲ K)				
4.2.2	Determine skills that provide beneficial services to the community. (*1.3.3)				
4.2.3	Examine formal and informal community resources and support systems available to individuals and families. (*1.3.4)				

(*) denotes National and Kansas (2000) Family and Consumer Sciences Standards (www.ksde.org)(21st) denotes 21st Century Learning Skills (www.21centuryskills.org)

(R) denotes Kansas Reading Curricular Standards

(H-G) denotes Kansas History & Government; Economics & Geography Curricular Standards

(\$) denotes National Standards for Financial Literacy

(M) denotes Kansas Mathematics Curricular Standards

(CC K&S) denotes Career Cluster Knowledge and Skills (www.careerclusters.org)

(▲) denotes assessed indicator for Kansas Assessment Tests

(W) denotes Kansas Writing Curricular Standards

3-3

Benchmark: 4.3 Analyze the impact of family as a system on individuals and society. (*6.0)		3	2	1	0
4.3.1	Examine family as a basic unit of society as it transmits societal expectations. (*6.1.1) (*6.1.2)				
4.3.2	Examine global influences on the family in teaching culture and traditions. (*6.1.3) (*6.1.4)				
4.3.3	Examine the role of family in developing independence, interdependence, and commitment of family members. (*6.1.5)				
4.3.4	Determine the impact of change and transitions over the life course. (*6.1.6)				
4.3.5	Determine personal and family management skills that transfer to the workplace.				
Benchmark: 4.4 Demonstrate appreciation for diversity and the functional needs of individuals and families.		3	2	1	0
4.4.1	Examine the impact of cultural diversity on individuals and families. (*6.2.2)				
4.4.2	Demonstrate respect for diversity with sensitivity to anti-bias, gender, equity, age, culture, and ethnicity. (*6.2.4) (H-G)				
4.4.3	Examine the impact of the global village on the need to appreciate diversity. (*6.2.5) (H-G)				
Benchmark: 4.5 Analyze conditions that impact human development, roles, and responsibilities throughout the life span. (*12.2)		3	2	1	0
4.5.1	Investigate the impact of heredity, gender, ethnicity, culture, and social forces on human development. (*12.2.1) (*12.2.2) (*12.2.3)				
4.5.2	Investigate the impact of environment, technology, economics, and life events on human development. (*12.2.1) (*12.2.2) (*12.2.3) (H-G)				
4.5.3	Analyze interrelationships of personal and family goals and values to work goals and values.				
4.5.4	Develop strategies for sharing ownership of responsibilities of managing family and work.				
Benchmark: 4.6 Analyze functions and expectations of constructive interpersonal relationships.		3	2	1	0
4.6.1	Examine appropriate strategies to initiate, maintain, and end interpersonal relationships. (*13.1.1)				
4.6.2	Examine the impact of various stages of the family life cycle on interpersonal relationships. (*13.1.2)				
4.6.3	Compare physical, emotional, and intellectual responses in stable and unstable relationships. (*13.1.3)				
4.6.4	Determine factors that contribute to healthy and unhealthy relationships. (*3.1.4)				

Additional comments: _____

(*) denotes National and Kansas (2000) Family and Consumer Sciences Standards (www.ksde.org)(21st) denotes 21st Century Learning Skills (www.21centuryskills.org)

(R) denotes Kansas Reading Curricular Standards

(H-G) denotes Kansas History & Government; Economics & Geography Curricular Standards

(\$) denotes National Standards for Financial Literacy

(M) denotes Kansas Mathematics Curricular Standards

(CC K&S) denotes Career Cluster Knowledge and Skills (www.careerclusters.org)

(▲) denotes assessed indicator for Kansas Assessment Tests

(W) denotes Kansas Writing Curricular Standards

**Kansas Family and Consumer Sciences Education
Work and Family Studies Program**

Course: Career and Life Planning

CIP Code: 19.0000 Course # CLP

Rating Scale: 3 Skilled- Works Independently
2 Limited Skills- Requires Assistance
1 Skill Undeveloped
0 No exposure- No instruction or training

Student: _____		Grade: _____	
Teacher: _____	School: _____		
Enrolled Date: _____	Completion Date: _____	Graduation Date: _____	
Student Signature _____		Teacher Signature _____	

Select Comm. on School Finance
 Date 2-14-06
 Attachment # 4-1

Directions: The following competencies are required for full approval for a course in a Family and Consumer Sciences Program. Check the appropriate number to indicate the level of competency reached for student evaluation.

Academic Foundations

Benchmark: 0.1 Apply reading and writing, math, and science skills in personal, professional, and community situations. (CC K&S)	3	2	1	0
0.1.1 Writes effectively for a variety of audiences, purposes, and contexts. (narrative, expository, technical, persuasive) (W1.4▲)				
0.1.2 Comprehends a variety of texts. (narrative, expository, technical, persuasive) (R1.4▲)				
0.1.3 Determines the meaning of words or phrases using context clues from sentences or paragraphs. (R1.3.1▲)				
0.1.4 Understands the purpose of text features and uses such features to locate information in and to gain meaning from appropriate-level texts. (R1.4.2▲)				
0.1.5 Uses information from the text to make inferences and draw conclusions. (R1.4.5▲)				
0.1.6 Adjusts original rational number estimate of a real-world problem based on additional information. (a frame of reference) (M1.3.A1▲) (\$) (M1.4.A1a,b,d▲) (\$)				
0.1.7 Generates and/or solves multi-step real-world problems with real numbers and algebraic expressions using computational procedures and mathematical concepts. (M1.4.A1a,b,d▲) (\$)				
0.1.8 Uses data analysis in real-world problems with rational number data sets to compare and contrast two sets of data, to make accurate inferences and predictions, to analyze decisions, and to develop convincing arguments from data displays. (M4.2.A1▲) (\$)				
0.1.9 Research, apply, and evaluate information to accomplish tasks. (CC K&S)				

Communications

Benchmark: 0.2 Demonstrate appropriate communication skills that contribute to positive relationships. (*13.3) (21 st)	3	2	1	0
0.2.1 Use appropriate communication strategies for most effective outcome. (*13.3.1) (CC K&S) (21 st)				
0.2.2 Use listening and writing skills appropriately to communicate clearly. (*13.3.2) (*13.3.3) (CC K&S) (21 st)				
0.2.3 Apply and/or interpret nonverbal communication to fully understand meaning. (CC K&S)				
0.2.4 Communicate respectfully and effectively with people of different cultures and diverse perspectives. (*13.3.5) (CC K&S) (21 st)				

Problem Solving and Critical Thinking

Benchmark: 0.3 Apply thinking and problem-solving processes to personal, professional and community issues. (21 st)	3	2	1	0
0.3.1 Clarify personal and family issues.				
0.3.2 Identify adequate, reliable information, and resources for personal and family problem solving. (CC K&S)				
0.3.3 Critique alternative methods of solving problems and accomplishing tasks. (CC K&S)				
0.3.4 Evaluate potential consequences of alternative choices. (CC K&S)				
0.3.5 Use criteria and standards to make ethical decisions. (21 st)				
0.3.6 Implement an action plan.				
0.3.7 Evaluate outcomes to measure progress. (CC K&S)				

(*) denotes National and Kansas (2000) Family and Consumer Sciences Standards (www.ksde.org)

(21st) denotes 21st Century Learning Skills (www.21centuryskills.org)

(R) denotes Kansas Reading Curricular Standards

(H-G) denotes Kansas History & Government; Economics & Geography Curricular Standards

(CC K&S) denotes Career Cluster Knowledge and Skills (www.careerclusters.org)

(▲) denotes assessed indicator for Kansas Assessment Tests

(W) denotes Kansas Writing Curricular Standards

H-2

Information Technology Applications

Benchmark: 0.4 Use technology to access, manage, integrate, and create information. (CC K&S)		3	2	1	0
0.4.1	Use a variety of communication technologies to locate information and manage records for family, work, and community settings. (*13.3.6) (CC K&S) (21 st)				
0.4.2	Use technology to analyze, manipulate, and interpret information. (CC K&S) (21 st)				
0.4.3	Identify adequate, reliable information, and resources. (CC K&S)				

Safety, Health and Environmental

Benchmark: 0.5 Evaluate potential hazardous situations to defuse them and determine intervention strategies. (CC K&S)		3	2	1	0
0.5.1	Manage the physical and social environment to reduce conflict and promote safety in family, workplace, and community. (CC K&S) (21 st)				
0.5.2	Practice safety techniques to create a safe environment. (CC K&S)				
0.5.3	Understand how to document and report emergency/crisis situations and outcomes to the appropriate authorities. (CC K&S)				
0.5.4	Follow regulations, organizational policies, and procedures to assure a safe and healthy environment. (CC K&S) (GovB1i2▲ A)				

Leadership and Teamwork and Ethics and Legal Responsibilities

Benchmark: 0.6 Demonstrate leadership, citizenship, and teamwork skills required for success in the family, workplace, and community. (*13.5) (21 st)		3	2	1	0
0.6.1	Examine the FCCLA organization and its relationship to the family and consumer sciences curriculum.				
0.6.2	Recognize and model positive leadership and teamwork behaviors to inspire others. (CC K&S) (21 st) (H-G)				
0.6.3	Identify ways to be a responsible citizen in families, career, and communities. (GovB2i2▲ K)				
0.6.4	Recognize diverse abilities of team members. (21 st)				
0.6.5	Apply leadership, citizenship, and teamwork skills in authentic experiences. (21 st) (H-G)				
0.6.6	Demonstrate ethical behavior in personal, workplace, and community context. (21 st)				

Career Development and Systems

Benchmark: 0.7 Analyze strategies to manage the multiple individual, family, career, and/or community roles and responsibilities. (*1.1) (CC K&S) (21 st)		3	2	1	0
0.7.1	Analyze ways that individual career goals can impact the family's capacity to meet goals for all family members. (*1.1.3) (CC K&S)				
0.7.2	Analyze the potential impact of career path decisions on balancing work and family. (*1.1.4)				
0.7.3	Develop a life plan for achieving individual, family and/or career goals. (*1.1.6) (CC K&S) (21 st)				
0.7.4	Determine skills and knowledge needed for a life plan. (21 st)				
0.7.5	Demonstrate processes for cooperating, compromising and collaborating to achieve goals. (*13.5.7) (21 st)				

Technical Skills

COMPREHENSIVE STANDARD: 1.0 Integrate multiple life roles and responsibilities in family, work, and community settings 1.0

Benchmark: 1.1 Demonstrate transferable and employability skills in community and workplace settings. (*1.2) (FCCLA Power of One)		3	2	1	0
1.1.1	Examine potential career choices to determine the knowledge, skills, and attitudes associated with each. (*1.2.1)				
1.1.2	Demonstrate job seeking and job keeping skills through strong work ethics and professionalism. (*1.2.2 & 1.2.8)				
1.1.3	Demonstrate communication skills and teamwork skills in community and workplace settings. (*1.2.3 & 1.2.4)				
1.1.4	Examine strategies to manage the impact of changing technologies in workplace settings. (*1.2.5) (H-G)				
1.1.5	Examine factors that contribute to maintaining safe and healthy work, and community environments. (*1.2.7)				

(*) denotes National and Kansas (2000) Family and Consumer Sciences Standards (www.ksde.org)

(21st) denotes 21st Century Learning Skills (www.21centuryskills.org)

(R) denotes Kansas Reading Curricular Standards

(H-G) denotes Kansas History & Government; Economics & Geography Curricular Standards

(\$) denotes National Standards for Financial Literacy

(M) denotes Kansas Mathematics Curricular Standards

(CC K&S) denotes Career Cluster Knowledge and Skills (www.careerclusters.org)

(▲) denotes assessed indicator for Kansas Assessment Tests

(W) denotes Kansas Writing Curricular Standards

4.3

Benchmark: 1.2 Develop strategies for life-long career planning.		3	2	1	0
1.2.1	Analyze significance of work for self, family, and society. (H-G)				
1.2.2	Define the career planning process assessing knowledge, attitudes, skills, and aspirations.				
1.2.3	Evaluate career choices in relation to life-management plan. (FCCLA Career Connection)				
1.2.4	Identify factors that impact current and future career choices. (H-G)				
Benchmark: 1.3 Demonstrate management of financial resources to meet the goals of individuals and families across the life span. (2.3) (*2.6) (\$)		3	2	1	0
1.3.1	Examine the need for personal and family financial planning. (2.3.1) (*2.6.1) (FCCLA Financial Fitness) (\$) (21 st) (H-G)				
1.3.2	Apply management principles to individual and family financial practices. (2.3.2) (*2.6.2) (\$) (21 st)				
Benchmark: 1.4 Analyze the impact of family as a system on individuals and society. (*6.1)		3	2	1	0
1.4.1	Examine the role of family in teaching culture, traditions, and societal expectations across the life span. (*6.1.4)				
1.4.2	Examine the role of family in developing independence, interdependence, and commitment of family members. (*6.1.5)				
1.4.3	Determine the impact of change and transitions over the life course. (*6.1.6)				
1.4.4	Explore the ways family and consumer sciences careers impact the family. (*6.1.7)				
Benchmark: 1.5 Evaluate effective conflict prevention and management techniques. (*13.4)		3	2	1	0
1.5.1	Identify effects of role stereotyping in work and family settings.				
1.5.2	Determine the roles of decision making and problem solving in reducing and managing conflict. (*13.4.3) (FCCLA Planning Process)				
1.5.3	Practice nonviolent strategies that address conflict. (*13.4.4) (FCCLA STOP the Violence)				
1.5.4	Choose effective responses to harassment. (*13.4.5)				
1.5.5	Assess community resources that support conflict prevention and stress management. (*13.4.6)				

Additional comments: _____

(*) denotes National and Kansas (2000) Family and Consumer Sciences Standards (www.ksde.org)
 (21st) denotes 21st Century Learning Skills (www.21centuryskills.org) (\$) denotes National Standards for Financial Literacy
 (R) denotes Kansas Reading Curricular Standards (M) denotes Kansas Mathematics Curricular Standards
 (H-G) denotes Kansas History & Government; Economics & Geography Curricular Standards

(CC K&S) denotes Career Cluster Knowledge and Skills (www.careerclusters.org)
 (▲) denotes assessed indicator for Kansas Assessment Tests
 (W) denotes Kansas Writing Curricular Standards

368-8500

KANSAS LEGISLATIVE RESEARCH DEPARTMENT

545N-Statehouse, 300 SW 10th Ave.
Topeka, Kansas 66612-1504
(785) 296-3181 ♦ FAX (785) 296-3824

kslegres@klrd.state.ks.us

<http://www.kslegislature.org/klrd>

January 31, 2006`

To: Representative Kathe Decker

Office No.: 128-S

From: Deb Hollon, Senior Fiscal Analyst

Re: Technical College Program List

You had requested a listing of programs at the technical colleges in Kansas. Enclosed is the degree inventory for each technical college. The programs listed are a part of the inventory, but may not actually be offered at all times.

I hope this information proves helpful. Please call should you have questions or need additional information.

DKH/jl

Enclosure

List of Programs Offered By institution (Technical Colleges) Created On 01/30/2006

at Hills Technical College

5-2

CIP Code	Institutional Title	Degree Category							
		Cert	Assoc	Bach	PostBacc	Mast	Spec	Doct	Prof
10.0305	GRAPHIC ARTS TECHNOLOGY	C							
10.0305	GRAPHIC ARTS TECHNOLOGY		A						
15.0613	MANUFACTURING TECHNOLOGY	C							
15.0613	MANUFACTURING TECHNOLOGY		A						
15.1301	DRAFTING/CIVIL TECHNOLOGY	C							
15.1301	DRAFTING/CIVIL TECHNOLOGY		A						
19.0599	HOSPITALITY/CULINARY ARTS	C							
19.0599	HOSPITALITY/CULINARY ARTS		A						
46.0201	CONSTRUCTION TECHNOLOGY	C							
46.0201	CONSTRUCTION TECHNOLOGY		A						
46.0401	INDUSTRIAL MAINTENANCE TECHNOLOGY	C							
46.0401	INDUSTRIAL MAINTENANCE TECHNOLOGY		A						
47.0604	AUTOMOTIVE TECHNOLOGY	C							
47.0604	AUTOMOTIVE TECHNOLOGY		A						
47.9999	POWER PLANT TECHNOLOGY		A						
50.0402	COMMERCIAL ART	C							
50.0402	COMMERCIAL ART		A						
51.0601	DENTAL ASSISTING	C							
51.0601	DENTAL ASSISTING		A						
51.0904	PARAMEDIC/MICT		A						
51.1613	PRACTICAL NURSING	C							
51.1613	PRACTICAL NURSING		A						
51.9999	HEALTH OCCUPATIONS TECHNOLOGY	C							
52.0401	OFFICE PROFESSIONAL	C							
52.0401	OFFICE PROFESSIONAL		A						
52.0407	NETWORK TECHNOLOGY		A						

Cert=Certification, Assoc=Associate, Bach=Bachelor, PostBacc=Post Baccalaureate, Mast=Masters, Spec=Specialist, Doc=Doctoral, Prof=First Professional

List of Programs Offered By institution (Technical Colleges) Created On 01/30/2006

5-3

Manhattan Area Technical College		Degree Category							
CIP Code	Institutional Title	Cert	Assoc	Bach	PostBacc	Mast	Spec	Doct	Prof
11.1001	INFORMATION AND NETWORK TECHNOLOGY		A						
15.0612	INDUSTRIAL TECHNOLOGY		A						
15.1302	DRAFTING TECHNOLOGY		A						
47.0603	AUTOMOTIVE COLLISION REPAIR		A						
47.0604	AUTOMOTIVE TECHNOLOGY		A						
51.1601	ASSOCIATE DEGREE NURSING		A						
52.0401	BUSINESS/COMPUTER TECHNOLOGY		A						

Cert=Certification, Assoc=Associate, Bach=Bachelor, PostBacc=Post Baccalaureate, Mast=Masters, Spec=Specialist, Doc=Doctoral, Prof=First Professional

List of Programs Offered By institution (Technical Colleges) Created On 01/30/2006

North Central Kansas Technical College		Degree Category							
CIP Code	Institutional Title	Cert	Assoc	Bach	PostBacc	Mast	Spec	Doct	Prof
01.0204	AGRICULTURE EQUIPMENT TECHNOLOGY		A						
12.0508	CULINARY ARTS	C							
15.0303	TELECOMMUNICATIONS & NETWORK TECHNOLOGY		A						
46.0101	BRICKLAYING	C							
46.0201	CARPENTRY-CABINETMAKING	C							
46.0302	ELECTRICAL TECHNOLOGY		A						
46.0302	RESIDENTIAL ELECTRICITY - HAYS	C							
47.0103	ELECTRONIC TECHNOLOGY		A						
47.0201	PLUMBING, HEATING & AIR CONDITIONING	C							
47.0302	HEAVY EQUIPMENT OPERATION	C							
47.0603	AUTOMOTIVE COLLISION REPAIR	C							
47.0603	AUTOMOTIVE COLLISION TECHNOLOGY	C							
47.0604	AUTOMOTIVE TECHNOLOGY		A						
9605	DIESEL TECHNOLOGY		A						

5-4

508	WELDING	C							
5085	PHARMACY TECHNICIAN - HAYS		A						
51.1601	ASSOCIATE DEGREE NURSING		A						
51.1613	PRACTICAL NURSING	C							
52.0401	BUSINESS & COMPUTER TECHNOLOGY		A						
52.1201	ADVANCED COMPUTER INFORMATION TECHNOLOGY		A						
52.1201	ADVANCED COMPUTER TECHNOLOGY	C							
52.1803	BUSINESS MANAGEMENT	C							

Cert=Certification, Assoc=Associate, Bach=Bachelor, PostBacc=Post Baccalaureate, Mast=Masters, Spec=Specialist, Doc=Doctoral, Prof=First Profession

List of Programs Offered By institution (Technical Colleges) Created On 01/30/2006

Northeast Kansas Technical College		Degree Category							
CIP Code	Institutional Title	Cert	Assoc	Bach	PostBacc	Mast	Spec	Doct	Prof
11.0901	COMPUTER NETWORKING TECHNOLOGY	C							
11.1002	COMPUTER SUPPORT TECHNOLOGY	C							
11.1002	COMPUTER SUPPORT TECHNOLOGY		A						
15.1301	COMPUTER AIDED DRAFTING	C							
15.1301	COMPUTER AIDED DRAFTING		A						
22.0302	PARALEGAL	C							
22.0302	PARALEGAL		A						
46.0000	BUILDING TRADES	C							
46.0101	MASONRY	C							
46.0302	ELECTRICAL TECHNOLOGY	C							
47.0104	COMPUTER REPAIR TECHNOLOGY	C							
47.0603	AUTOMOTIVE COLLISION REPAIR	C							
47.0603	AUTOMOTIVE COLLISION REPAIR		A						
47.0604	AUTOMOTIVE REPAIR TECHNOLOGY	C							
47.0604	AUTOMOTIVE REPAIR TECHNOLOGY		A						
47.0605	DIESEL TECHNOLOGY	C							
47.0605	DIESEL TECHNOLOGY		A						

5-5

0508	INDUSTRIAL WELDING TECHNOLOGY	C							
0715	MEDICAL OFFICE ASSISTANT	C							
51.0715	MEDICAL OFFICE ASSISTANT		A						
51.1613	LICENSED PRACTICAL NURSING	C							
52.0401	ADMINISTRATIVE ASSISTANT	C							
52.0401	ADMINISTRATIVE ASSISTANT		A						
52.0905	FOOD AND BEVERAGE MANAGEMENT	C							
52.0905	FOOD AND BEVERAGE MANAGEMENT		A						

Cert=Certification, Assoc=Associate, Bach=Bachelor, PostBacc=Post Baccalaureate, Mast=Masters, Spec=Specialist, Doc=Doctoral, Prof=First Pr

List of Programs Offered By institution (Technical Colleges) Created On 01/30/2006

Northwest Kansas Technical College		Degree Category							
CIP Code	Institutional Title	Cert	Assoc	Bach	PostBacc	Mast	Spec	Doct	Prof
10.0303	COMPUTER GRAPHICS TECHNOLOGY	C							
10.0303	COMPUTER GRAPHICS TECHNOLOGY		A						
12.0401	COSMETOLOGY	C							
12.0401	COSMETOLOGY		A						
12.0401	NAIL TECHNICIAN	C							
15.0201	ENGINEERING TECHNOLOGY	C							
15.0201	ENGINEERING TECHNOLOGY		A						
46.0201	CARPENTRY	C							
46.0201	CARPENTRY		A						
46.0302	ELECTRICAL TECHNOLOGY	C							
46.0302	ELECTRICAL TECHNOLOGY		A						
47.0101	ELECTRONICS & COMPUTER TECHNOLOGY	C							
47.0101	ELECTRONICS & COMPUTER TECHNOLOGY		A						
47.0103	COMMUNICATIONS TECHNOLOGY	C							
47.0103	COMMUNICATIONS TECHNOLOGY		A						
47.0105	COMMUNICATIONS NETWORK TECHNOLOGY	C							
47.0105	COMMUNICATIONS NETWORK TECHNOLOGY		A						
0201	HVAC/R	C							

47.0201	HVAC/R		A						
47.0603	AUTO BODY REPAIR	C							
47.0603	AUTO BODY REPAIR		A						
47.0604	AUTOMOTIVE TECHNOLOGY	C							
47.0604	AUTOMOTIVE TECHNOLOGY		A						
47.0605	DIESEL TECHNOLOGY	C							
47.0605	DIESEL TECHNOLOGY		A						
48.0508	WELDING	C							
48.0508	WELDING		A						
51.0801	MEDICAL ASSISTANT	C							
51.0801	MEDICAL ASSISTANT		A						
51.0908	RESPIRATORY THERAPY		A						
52.0401	BUSINESS TECHNOLOGY	C							
52.0401	BUSINESS TECHNOLOGY		A						

Cert=Certification, Assoc=Associate, Bach=Bachelor, PostBacc=Post Baccalaureate, Mast=Masters, Spec=Specialist, Doc=Doctoral, Pr

List of Programs Offered By institution (Technical Colleges) Created On 01/30/2006

Wichita Area Technical College		Degree Category							
CIP Code	Institutional Title	Cert	Assoc	Bach	PostBacc	Mast	Spec	Doct	Prof
10.0305	MANUFACTURING TECHNOLOGY-PRINTING TECHNOLOGY		A						
10.0305	PRINTING TECHNOLOGY	C							
15.0303	ELECTRONIC ENGINEERING TECHNOLOGY		A						
15.0303	ELECTRONICS	C							
15.0805	MECHANICAL ENGINEERING TECHNOLOGY		A						
15.1301	COMPUTER AIDED DRAFTING	C							
15.1301	MANUFACTURING TECHNOLOGY-COMPUTER AIDED DRAFTING		A						
19.0708	CHILD DEVELOPMENT PROFESSIONAL-DIRECTOR	C							
19.0708	CHILD DEVELOPMENT PROFESSIONAL-DIRECTOR		A						
19.0709	CHILD DEVELOPMENT ASSISTANT TEACHER	C							

0709	CHILD DEVELOPMENT ASSOCIATE	C							
0709	CHILD DEVELOPMENT PROFESSIONAL	C							
19.0709	CHILD DEVELOPMENT PROFESSIONAL-NANNY	C							
19.0709	CHILD DEVELOPMENT PROFESSIONAL-TEACHER	C							
46.0101	MASONRY APPRENTICESHIP	C							
46.0101	MASONRY APPRENTICESHIP		A						
46.0201	CARPENTRY	C							
46.0201	CARPENTRY APPRENTICESHIP	C							
46.0201	CARPENTRY APPRENTICESHIP		A						
46.0201	CONSTRUCTION TECHNOLOGY-CARPENTRY		A						
46.0301	ELECTRICAL APPRENTICESHIP	C							
46.0301	ELECTRICAL APPRENTICESHIP		A						
46.0503	PLUMBING APPRENTICESHIP	C							
46.0503	PLUMBING APPRENTICESHIP		A						
47.0201	HEATING/AIR CONDITIONING/REFRIGERATION APPRENTICESHIP	C							
47.0201	HEATING/AIR CONDITIONING/REFRIGERATION APPRENTICESHIP		A						
47.0603	AUTO COLLISION REPAIR	C							
47.0603	TRANSPORTATION TECHNOLOGY-AUTO COLLISION REPAIR		A						
47.0604	AUTOMOTIVE SERVICE TECHNOLOGY	C							
47.0604	TRANSPORTATION TECHNOLOGY-AUTOMOTIVE SERVICE TECHNOLOGY		A						
47.0605	DIESEL TECHNOLOGY	C							
47.0605	TRANSPORTATION TECHNOLOGY-DIESEL TECHNOLOGY		A						
47.0607	AIRCRAFT SHEETMETAL	C							
47.0609	AVIATION INSTRUMENT TECHNICIAN	C							
47.0699	MOTORCYCLE TECHNOLOGY	C							
47.0699	OUTDOOR POWER EQUIPMENT	C							
47.0699	TRANSPORTATION TECHNOLOGY-MOTORCYCLE TECHNOLOGY		A						
47.0699	TRANSPORTATION TECHNOLOGY-OUTDOOR POWER EQUIPMENT		A						
48.0501	MACHINING APPRENTICESHIP	C							
0501	MACHINING APPRENTICESHIP		A						

5-9

9501	MACHINING TECHNOLOGY	C							
9501	MANUFACTURING TECHNOLOGY-MACHINING TECHNOLOGY		A						
48.0506	SHEETMETAL APPRENTICESHIP	C							
48.0506	SHEETMETAL APPRENTICESHIP		A						
48.0508	CONSTRUCTION TECHNOLOGY--WELDING		A						
48.0508	WELDING	C							
48.0509	IRONWORKER APPRENTICESHIP	C							
48.0509	IRONWORKER APPRENTICESHIP		A						
48.0799	AVIATION CABINETMAKER	C							
48.0799	AVIATION INTERIORS INSTALLER	C							
51.0601	DENTAL ASSISTANT	C							
51.0708	MEDICAL TRANSCRIPTION	C							
51.0708	MEDICAL TRANSCRIPTION SPECIALIST		A						
51.0716	MEDICAL OFFICE SPECIALIST		A						
51.0716	MEDICAL SECRETARY	C							
51.0801	MEDICAL ASSISTANT	C							
51.0909	SURGICAL TECHNOLOGIST	C							
51.1004	MEDICAL LABORATORY TECHNICIAN		A						
51.1503	MENTAL HEALTH TECHNICIAN	C							
51.1613	PRACTICAL NURSE	C							
52.1803	MARKETING	C							
52.1803	MARKETING MID-MANAGEMENT		A						

Cert=Certification, Assoc=Associate, Bach=Bachelor, PostBacc=Post Baccalaureate, Mast=Masters, Spec=Specialist, Doc=Doctoral, Prof=First Professional

Institution=KC Area Tech Sch

**Acceptable CIP Codes for each Institution
Cip Codes as of Friday, February 10, 2006**

Institution	Fice	CIP	Program Name	Traditional
KC Area Tech Sch	013564	11.0301	Data Processing Technology/Technician	Female
KC Area Tech Sch	013564	11.0305	Graphic And Printing Equipment Operators, General	Male
KC Area Tech Sch	013564	11.0901	Computer Systems Networking	Male
KC Area Tech Sch	013564	12.0401	Cosmetologist	Female
KC Area Tech Sch	013564	15.1302	Drafting, General	Male
KC Area Tech Sch	013564	19.0505	Institutional Food Service Administrator	Female
KC Area Tech Sch	013564	19.0605	Home Furnishing And Equipment Installer And Consultant (Floral Arranging)	Female
KC Area Tech Sch	013564	19.0709	Child Care Provider/Assistant	Female
KC Area Tech Sch	013564	19.0905	Clothing, Apparel And Textiles Workers And Manager, General	Female
KC Area Tech Sch	013564	46.0201	Carpenter	Male
KC Area Tech Sch	013564	46.0301	Electrical And Power Transmission Installer, General	Male
KC Area Tech Sch	013564	46.0401	Building/Property Maintenance And Manager	Male
KC Area Tech Sch	013564	46.0502	Plumber And Pipefitter	Male
KC Area Tech Sch	013564	47.0101	Electrical And Electronics Equipment Installer And Repairer, General	Male
KC Area Tech Sch	013564	47.0104	Computer Installer And Repairer	Male
KC Area Tech Sch	013564	47.0201	Heating, Air Conditioning And Refrigeration, Mechanic And Repairer	Male
KC Area Tech Sch	013564	47.0603	Automotive Body Repairer	Male
KC Area Tech Sch	013564	47.0604	Automotive Mechanic/Technician	Male
KC Area Tech Sch	013564	47.0606	Small Engine Mechanic And Repairer	Male
KC Area Tech Sch	013564	48.0303	Upholsterer	Male
KC Area Tech Sch	013564	48.0501	Machinist/Machine Technologist	Male
KC Area Tech Sch	013564	48.0508	Welder/Welding Technologist	Male
KC Area Tech Sch	013564	48.0703	Cabinet Maker And Millworker	Male

Select Comm. on School Finance
Date 2-14-06
Attachment # 6-1

Institution=KC Area Tech Sch

Institution	Fice	CIP	Program Name	Traditional
KC Area Tech Sch	013564	50.0402	Graphic Design, Commercial Art And Illustration	Male
KC Area Tech Sch	013564	50.0602	Video And Multimedia Production	Male
KC Area Tech Sch	013564	51.1613	Practical Nurse (LPN Training)	Female
KC Area Tech Sch	013564	51.1614	Nurse Aide	Female
KC Area Tech Sch	013564	51.2601	Health Aide (Geriatric Aide) or (Nursing Home Aide)	Female
KC Area Tech Sch	013564	51.2601	Health Aide (Medication Aide)	Female
KC Area Tech Sch	013564	51.2602	Home Health Aide	Female
KC Area Tech Sch	013564	51.9999	Health Professions And Related Science, Other (Health Careers)	Female
KC Area Tech Sch	013564	52.0302	Accounting Technician	Female
KC Area Tech Sch	013564	52.0401	Administrative Assistant/Secretarial Science, General	Female
KC Area Tech Sch	013564	52.0408	General Office/Clerical And Typing Services	Female

Institution=Kaw Area Tech Sch

**Acceptable CIP Codes for each Institution
Cip Codes as of Friday, February 10, 2006**

Institution	Fice	CIP	Program Name	Traditional
Kaw Area Tech Sch	010689	01.0601	Horticulture	Male
Kaw Area Tech Sch	010689	10.0305	Graphics/Printing Tech	Male
Kaw Area Tech Sch	010689	12.0508	Food Service	Female
Kaw Area Tech Sch	010689	15.0201	Civil Engineering Tech	Male
Kaw Area Tech Sch	010689	15.1301	TECHNICAL DRAFTING	Male
Kaw Area Tech Sch	010689	19.0605	Interior Design	Female
Kaw Area Tech Sch	010689	19.0709	Child Care	Female
Kaw Area Tech Sch	010689	22.0301	Legal Office Professional	Female
Kaw Area Tech Sch	010689	46.0302	Electricity/Heating And Air Conditioning	Male
Kaw Area Tech Sch	010689	46.0401	Building/Industrial Tech	Male
Kaw Area Tech Sch	010689	47.0101	Computer Tech	Male
Kaw Area Tech Sch	010689	47.0101	Electronic Tech	Male
Kaw Area Tech Sch	010689	47.0603	Collision Repair	Male
Kaw Area Tech Sch	010689	47.0604	Automotive Tech	Male
Kaw Area Tech Sch	010689	47.0605	Diesel Mechanics	Male
Kaw Area Tech Sch	010689	47.9999	Warehousing/Sales	Male
Kaw Area Tech Sch	010689	48.0501	Machine Tool Tech	Male
Kaw Area Tech Sch	010689	48.0508	Welding	Male
Kaw Area Tech Sch	010689	48.0703	Cabinet/Millwork	Male
Kaw Area Tech Sch	010689	50.0406	Photo Tech	Male
Kaw Area Tech Sch	010689	51.0716	Medical Office Specialist	Female
Kaw Area Tech Sch	010689	51.0909	Surgical Tech	Female
Kaw Area Tech Sch	010689	51.1613	Practical Nursing	Female
Kaw Area Tech Sch	010689	51.1614	Pre-Nursing	Female
Kaw Area Tech Sch	010689	51.2063	Medication Aide	Female
Kaw Area Tech Sch	010689	51.2602	Home Health Aide	Female
Kaw Area Tech Sch	010689	51.2603	Medication Aide	Female
Kaw Area Tech Sch	010689	52.0401	Office Tech	Female

Institution=Salina Area Tech Sch

Acceptable CIP Codes for each Institution
Cip Codes as of Friday, February 10, 2006

Institution	Fice	CIP	Program Name	Traditional
Salina Area Tech Sch	005499	01.0604	Landscape Design/Greenhouse Mngmt	Male
Salina Area Tech Sch	005499	15.0506	Environmental Technology	Male
Salina Area Tech Sch	005499	15.0699	Machine Shop	Male
Salina Area Tech Sch	005499	15.1301	CAD	Male
Salina Area Tech Sch	005499	46.0201	Construction Trades	Male
Salina Area Tech Sch	005499	47.0101	Applied Electronic Technology	Male
Salina Area Tech Sch	005499	47.0201	HVAC	Male
Salina Area Tech Sch	005499	47.0603	Auto Body Technology	Male
Salina Area Tech Sch	005499	47.0604	Automotive Technology	Male
Salina Area Tech Sch	005499	47.0605	Diesel Technology	Male
Salina Area Tech Sch	005499	48.0508	Welding Technology	Male
Salina Area Tech Sch	005499	50.0402	Commercial - Advertising Art	Male
Salina Area Tech Sch	005499	51.0601	Dental Assistant	Female
Salina Area Tech Sch	005499	52.0401	Business And Computer Technology	Female

Institution=Southwest KS Tech Sch

**Acceptable CIP Codes for each Institution
Cip Codes as of Friday, February 10, 2006**

Institution	Fice	CIP	Program Name	Traditional
Southwest KS Tech Sch	005269	15.1301	Drafting And Design Technology/Technician, General	Male
Southwest KS Tech Sch	005269	46.0101	Mason/Masonry	Male
Southwest KS Tech Sch	005269	46.0201	Carpentry/Carpenter	Male
Southwest KS Tech Sch	005269	47.0104	Computer Installation And Repair Technology/Technician	Male
Southwest KS Tech Sch	005269	47.0201	Heating, Air Conditioning, Ventilation And Refrigeration Maintenance Technology/Technician	Male
Southwest KS Tech Sch	005269	47.0409	Parts And Warehousing Operations And Maintenance Technology/Technician	Male
Southwest KS Tech Sch	005269	47.0603	Autobody/Collision And Repair Technology/Technician	Male
Southwest KS Tech Sch	005269	47.0604	Automobile/Automotive Mechanics Technology/Technician	Male
Southwest KS Tech Sch	005269	47.0605	Diesel Mechanics Technology/Technician	Male
Southwest KS Tech Sch	005269	48.0501	Machine Tool Technology/Machinist	Male
Southwest KS Tech Sch	005269	48.0508	Welding Technology/Welder	Male
Southwest KS Tech Sch	005269	49.0205	Truck And Bus Driver/Commercial Vehicle Operation	Male
Southwest KS Tech Sch	005269	51.0801	Medical/Clinical Assistant	Female
Southwest KS Tech Sch	005269	52.0401	Administrative Assistant And Secretarial Science, General	Female

Career and Technical Education Fact Sheet

Mission:

To provide leadership for secondary schools to develop and implement a system of career and technical education.

Major Responsibilities:

1. State .5 Weighted Funding: Since the 1992 legislative session, State .5 weighted monies have been available for state approved career and technical programs. These programs have been determined to be "high cost programs." Only approved classes at the 9th grade level or above generate additional weighted funding. Approximately \$29.8 million dollars in state funding was allocated last year.
2. Carl D. Perkins Federal Funds: These funds are available to Career and Technical Education (CTE) programs that have been through the approval process. The federal legislation outlines specific directions for the use of the funds. A formula, developed at the federal level, determines each district's allocation. Last fiscal year, \$7.1 million dollars in federal Perkins funding was made available for secondary career and technical education programs in Kansas.
3. Career and Technical Program Approval: Staff, having program specific responsibility, provide leadership in the approval of applications submitted by secondary institutions. The program of study contains such items as: (a) classroom based learning, (b) experience based learning, (c) connecting activities, and (d) accountability. All programs work through a program review process once each five-year cycle.
4. Tech Prep: A four-year sequence of study beginning in the 11th year of high school and continuing through 2 years of postsecondary occupational education and culminating in a certificate or associate degree. An articulation agreement between the secondary and postsecondary institution is required to insure a smooth transition from secondary to post-secondary education and to provide a robust, sequential course of study.
5. High Schools That Work (HSTW): The nation's largest effort to combine challenging academic courses and modern vocational studies to raise the achievement of career-bound high school students. Established in 1987 by the Southern Region Education Board (SREB), Kansas is one of 21 states to participate in this initiative. HSTW is a scientifically-based research strategy that shows career-bound students will master complex academic and technical concepts when schools create an environment which encourages students to succeed.

Select Comm. on School Finance

For more information about Career and Technical Education, con

Date 2-14-06

Linda Oborny, Assistant Director for State and Federal Programs, loborny@ksde.c

Attachment # 7-1

2004 EXPENDITURES FOR FEDERAL CARL PERKINS GRANTS	
Secondary Improvement	\$5,001,396
Competitive Tech-Prep Grants	\$1,041,873
Statewide Improvement Grants/Contracts	\$436,198
State Administration and Leadership	\$634,855
TOTAL	\$7,114,322

2004 GENDER		2004 ETHNICITY				
Male	Female	Black	American Indian/Alaska Native	Asian/Pacific Islander	Hispanic	White
50.1%	49.9%	7.5%	1%	2%	7.5%	82%

2005 PARTICIPATION IN CAREER and TECHNICAL PROGRAMS	
Number of USDs / Number of Schools with Career & Technical Programs	Total Number of Career & Technical Programs
278 / 330	1512

2005 APPROVED PROGRAMS BY AREA	
Agriculture	157
Marketing	37
Business and Computers	310
Trade and Industry	391
Family and Consumer Sciences	255
Occupational Family and Consumer Sciences	98
Health	35
Technology Education	229

SECTION II. PROGRAMS

Directions: Click in *ONLY* one (1) Program per VE-2 application. See individual program standards for program descriptions.

AGRICULTURE EDUCATION

- 01.0000 Agricultural Education, General
- 01.0201 Agricultural Mechanics
- 01.0599 Agricultural And Domestic Animal Services
- 01.0601 Horticulture
- 01.9999 Agricultural Science

BUSINESS & COMPUTER TECHNOLOGY & MARKETING

- 08.0705 Marketing Education
- 11.0201 Computer Programming
- 52.0302 Accounting Technician
- 52.0401 Secretarial; Secretarial/Accounting (Combined)
- 52.0407 Information Processing
- 52.1202 Web Page Design
- 52.1204 Business Systems Networking & Telecommunication

HEALTH OCCUPATIONS EXPLORATION

- 51.9999 Health Occupations Exploration

FAMILY & CONSUMER SCIENCES (FACS)

- 20.0101 Family & Consumer Sciences (FACS)

OCCUPATIONAL FAMILY & CONSUMER SCIENCES

- 20.0201 Early Childhood, Education & Services
- 20.0301 Textiles & Apparel
- 20.0401 Food Production & Services
- 20.0501 Housing, Interiors & Furnishings

TECHNOLOGY EDUCATION

- 10.0105 Communications Technology Program
- 14.0101 Pre-Engineering Program
- 15.0613 Production Technology Program

TRADE & INDUSTRY

- 10.0305 Graphic & Printing Equipment Operator, General Production
- 15.1203 Computer Hardware Technology/Technician
- 15.1302 CAD/CADD Drafting and/or Design Technology/Technician
- 46.0201 Carpentry/Construction
- 47.0101 Electrical/Electronics Equipment Installation & Repair
- 47.0603 Auto Body/Collision & Repair Technology
- 47.0604 Automobile/Automotive Mechanics Technology
- 47.0606 Small Engine Mechanics & Repair Technology
- 48.0501 Machine Tool Technology/Machinist
- 48.0508 Welding Technology/Welder
- 48.0703 Cabinetmaking & Furniture Design

AG EDUCATION PROGRAM AREA

<u>Program Name</u>	<u>CIP Code</u>	<u># of Programs</u>
Ag Education	01.0101 or 01.0000	153
Ag Mechanics	01.0201	3
Horticulture	01.0601	1
	TOTAL	157

BUSINESS PROGRAM AREA

<u>Program Name</u>	<u>CIP Code</u>	<u># of Programs</u>
Computer Programming	11.0201	26
Accounting Tech.	52.0302	29
Business/Office Ed.	52.0401	225
Information Processing	52.0407	22
Bs. Computer Programming	52.1202	2
Bs. System Networking	52.1204	6
	TOTAL	310

FAMILY AND CONSUMER SCIENCES (FAMILY FOCUS) AREA

<u>Program Name</u>	<u>CIP Code</u>	<u># of Programs</u>
Family and Consumer Sciences	20.0101	255

MARKETING PROGRAM AREA

<u>Program Name</u>	<u>CIP Code</u>	<u># of Programs</u>
Marketing Education	08.0705	37

HEALTH OCCUPATIONS EXPLORATION PROGRAM AREA

<u>Program Name</u>	<u>CIP Code</u>	<u># of Programs</u>
Health Occupations Exploration	51.9999	35

OCCUPATIONAL FAMILY & CONSUMER SCIENCES PROGRAM AREA

<u>Program Name</u>	<u>CIP Code</u>	<u># of Programs</u>
Early Childhood, Educ. & Services	20.0201	26
Textiles & Apparel	20.0301	11
Fashion/Fabric Coordinator	20.0306	3
Food Production & Services	20.0401	29
Dietetic Aide	20.0404	1
Housing, Interiors & Furnishings	20.0501	10
Occupational FACS Cluster	20.9999	18
	TOTAL	98

TECHNOLOGY EDUCATION PROGRAM AREA

<u>Program Name</u>	<u>CIP Code</u>	<u># of Programs</u>
Communications Technology	10.0105	45
Pre-Engineering	14.0101	1
Production Technology	15.0613	8
Technology Education	15.9999	175
	TOTAL	229

TRADE & INDUSTRY PROGRAM AREA

<u>Program Name</u>	<u>CIP Code</u>	<u># of Programs</u>
Radio & TV Broadcasting	09.0701	1
Industrial Prod. Other	15.0699	8
Criminal Justice	43.0199	2
Carpentry	46.0201	55
Bldg. & Property Mgmt.	46.0401	1
Facilities Mgmt. & Maint.	46.0499	1
Construction Trades, Other	46.9999	7
Electric Equip. Repair	47.0101	5
Computer Installer, Repair	47.0104	1
Auto Body Repair	47.0603	4
Auto Mechanics	47.0604	37
Small Engine Mech. Repair	47.0606	1
Vehicle/Mobile Equip. Mech.	47.0699	6
Drafting	48.0101	107
Graphic & Printing Commun.	48.0201	9
Graphic & Printing, Other	48.0299	1
Machinist/Machine Tech.	48.0501	8
Welding	48.0508	29
Cabinetry	48.0703	19
Precision Production Trades	48.9999	81
Graphic Design	50.0402	5
Commercial Photography	50.0406	3
	TOTAL	391

TOTAL PROGRAMS FOR FY '05 1,512