

Approved: 3-29-06

Date

MINUTES OF THE SENATE FEDERAL AND STATE AFFAIRS COMMITTEE

The meeting was called to order by Chairman Pete Brungardt at 10:30 a.m. on February 16, 2006 in Room 231-N of the Capitol.

All members were present except:

Senator Kay O'Connor - excused

Committee staff present:

Athena Andaya, Kansas Legislative Research Department
Dennis Hodgins, Kansas Legislative Research Department
Mary Ann Torrence, Revisor of Statutes Office
Connie Burns, Committee Secretary

Conferees appearing before the committee:

Ed Pavey, Kansas Law Enforcement Training Center
Jackie Williams, KS Commission on Peace Officer Standards & Training
Randy Rogers, Kansas Sheriffs Association
Mike Watson, Kansas Association of Chiefs of Police
Kevin Cavanaugh, Kansas Peace Officers Association

Others attending:

See attached list.

SB 567 – Law enforcement training act revision; funding

Chairman Brungardt opened the hearing on **SB 567**.

Ed Pavey, Director, Kansas Law Enforcement Training Center (KLETC), appeared in support of the bill. (Attachment 1) This bill would fund KLETC's critical needs through increased court docket fees, the proposed \$9 increase in district court docket fees and \$7.50 of the proposed \$10 increase in Municipal court docket fees would be used to fund KLETC annual operating costs and critical capital outlay needs. The remaining \$2.50 of the proposed \$10 municipal court docket fee remittance increase would fund the annual operating expenses of the Kansas commission on Peace Officers' Standards and Training (KS-CPOST created by KSA 74-5606) as a stand-alone regulatory Commission, removing the Commission from KLETC oversight.

Jackie Williams, Kansas Commission on Peace Officer's standards and Training (KS-CPOST), spoke in support of the bill. (Attachment 2) The Legislature created the KS-CPOST in 1982, but failed to provide a separate staff or funding source. Overseeing the certifications of Kansas law enforcement officers, the KS-CPOST relies exclusively upon funds and staff provided by the Kansas Law Enforcement Training Center (KLETC) and with KS-CPOST's regulatory function this has created an ever increasing drain on KLETC resources. Every dollar spent on regulation is a dollar taken from law enforcement training.

Randy Rogers, Kansas Sheriffs Association, appeared in support of the bill. (Attachment 3) The Association supports the effort of obtaining funding for operations at the academy and for expansion of facilities for housing and training. The Association adamantly opposes any language that would open the door to charging local law enforcement agencies tuition fee to send officers to the academy, and support the bill with the condition that the only funding source would be through Docket Fees.

Mike Watson, Kansas Association of Chiefs of Police, spoke in support of the bill. (Attachment 4) KACXP supports increased funding for the Kansas Law Enforcement Training Center (KLETC) and the establishment of the Kansas Commission on Peace Officers' Standards and Training as a separate, stand alone regulatory agency through increases in district and municipal court docket fees.

Kevin Cavanaugh, Kansas Peace Officers Association, appeared in support of the bill. (Attachment 5) The Association believes that adequate funding for the operation of our state's basic law enforcement training academy is absolutely vital to guarantee the continuation of the high standards of professionalism our citizens have come to expect.

Chairman Brungardt closed the hearing on **SB 567**.

Final Action:

SB 486 - Governor's task force on racial profiling extended until 2012

Senator Betts provided the committee with a language for a substitute bill. (Attachment 6) The language will allow more time for members of the Task Force to work with law enforcement agencies on current policies related to racial profiling prior to the creation of the racial profiling commission.

Senator Hensley made a motion to adopt the language for a substitute bill and to pass **Substitute for SB 486** out favorably. Senator Reitz seconded the motion. The motion carried.

SB 403 - Alcoholic beverage licensees; procedures relating to violations; prohibition against employing certain persons

Senator Vratil moved the language to amend the bill, on page 1, lines 21 – 27 on *notice to appear* instead of citation, Sec. 1 line 23 - 27, the notice to appear to be clarified that it would be null and void if not served. Senator Reitz seconded the motion. The motion carried.

Senator Reitz moved to pass the bill favorably as amended. Senator Wilson seconded the motion. The motion carried.

SB 394 - Rules and regulations - approval of publication by State Rules and Regulations Board

Senator Wilson moved to pass the bill favorably and be placed on the Consent Calendar. Senator Brownlee seconded the motion. The motion carried.

SB 555 - Allowing club and drinking establishment patrons to carry out partially consumed containers of alcoholic liquor

Senator Reitz moved to pass the bill favorably. Senator Wilson seconded the motion. The motion carried.

SB 421 - Unlawful picketing or protest march at funeral or memorial service

Senator Vratil suggested language that would keep the distance and time in tack, and would keep the free flow on sidewalks and streets for public forum, but keep the protestors off private property. The Revisor will draft and present next week for the bill to be worked.

Senator Brownlee is having a resolution on the funeral picketing drafted and will introduce next week.

The meeting was adjourned at 11:45 am. The next scheduled meeting is February 21, 2006.

SENATE FEDERAL AND STATE AFFAIRS COMMITTEE

GUEST LIST

DATE 2-16-06

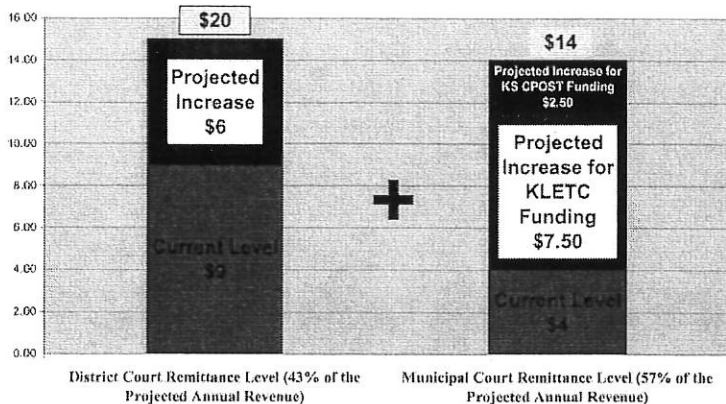
NAME	REPRESENTING
Rev Allen D. Smith	Racial Profiling Task Force
Chief W. T. Smith	Harper P.D. - KS-CPOST
Maj Jackie Stuart	Sedgewick Co. Sheriff
John Smith	KU Continuing Education
DARIN BECK	KANSAS LAW ENFORCEMENT TRAINING CENTER
Ron Gould	Kansas Law Enforcement Training Center
Keith Kelle	KU
Shane Hoobler	Shawnee Co Sheriff's office
Rance Royer	Shawnee Co. Sheriff's office
Bob Keller	JCSO
Franklin	Johnson Co, KS. S. D.
John Simmons	Fairway Police Dept.
Nancy Girossi	KU Continuing Education
William R. Seck	Kansas Highway Patrol
LOREN J PEPPER	Leadership Manhattan
Tammy M. Bryant	" "
Jeff Chapman	" "
Neil Horton	" "
Jackson ARUBRISTER	ABO
Phil Bradley	KLBA
Phil Wilkes	ABC
Leo PRIETO	KHLAAC
John D. Smith	KAAAC
Bobby Jacquot	LKM
Ken Seiber	Bear Law Firm

The University of Kansas
 Kansas Law Enforcement Training Center

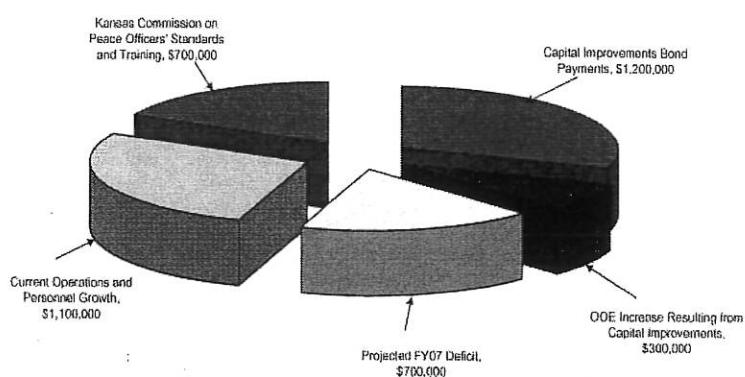
2006 Kansas Legislative Session

*Funding KLETC's critical needs through increased court docket fees...
 The proposed \$9 increase in district court docket fees and \$7.50 of the proposed \$10 increase in Municipal court docket fees would be used to fund KLETC annual operating costs and critical capital outlay needs. The remaining \$2.50 of the proposed \$10 municipal court docket fee remittance increase would fund the annual operating expenses of the Kansas Commission on Peace Officers' Standards and Training (KS-CPOST created by KSA 74-5606) as a stand-alone regulatory Commission, removing the Commission from KLETC oversight.*

KLETC Strategic Plan Funding Through Increased Docket Fee Remittance Levels



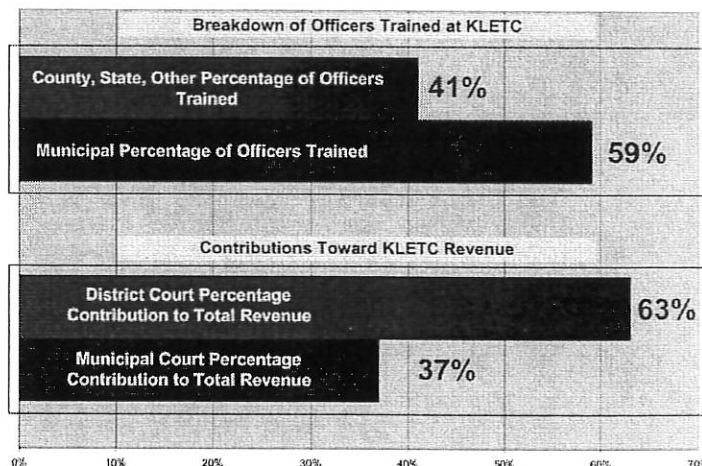
KLETC Request Breakdown (in dollars per year)



National Average Cost Per Trainee:
\$13,100

KLETC Actual Cost Per Trainee:
\$9,083

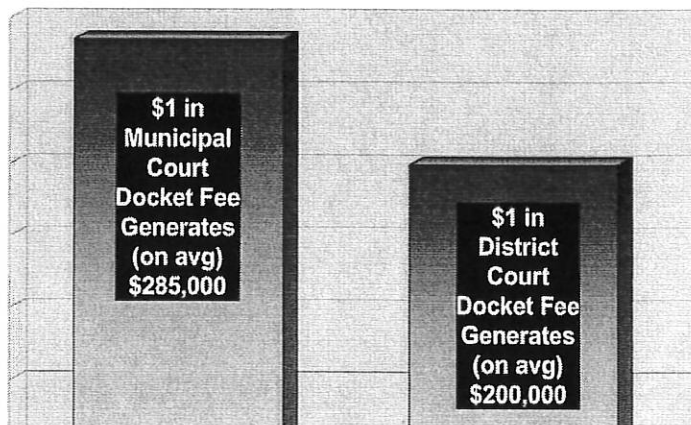
Source: U.S. Department of Justice, Bureau of Justice Statistics.



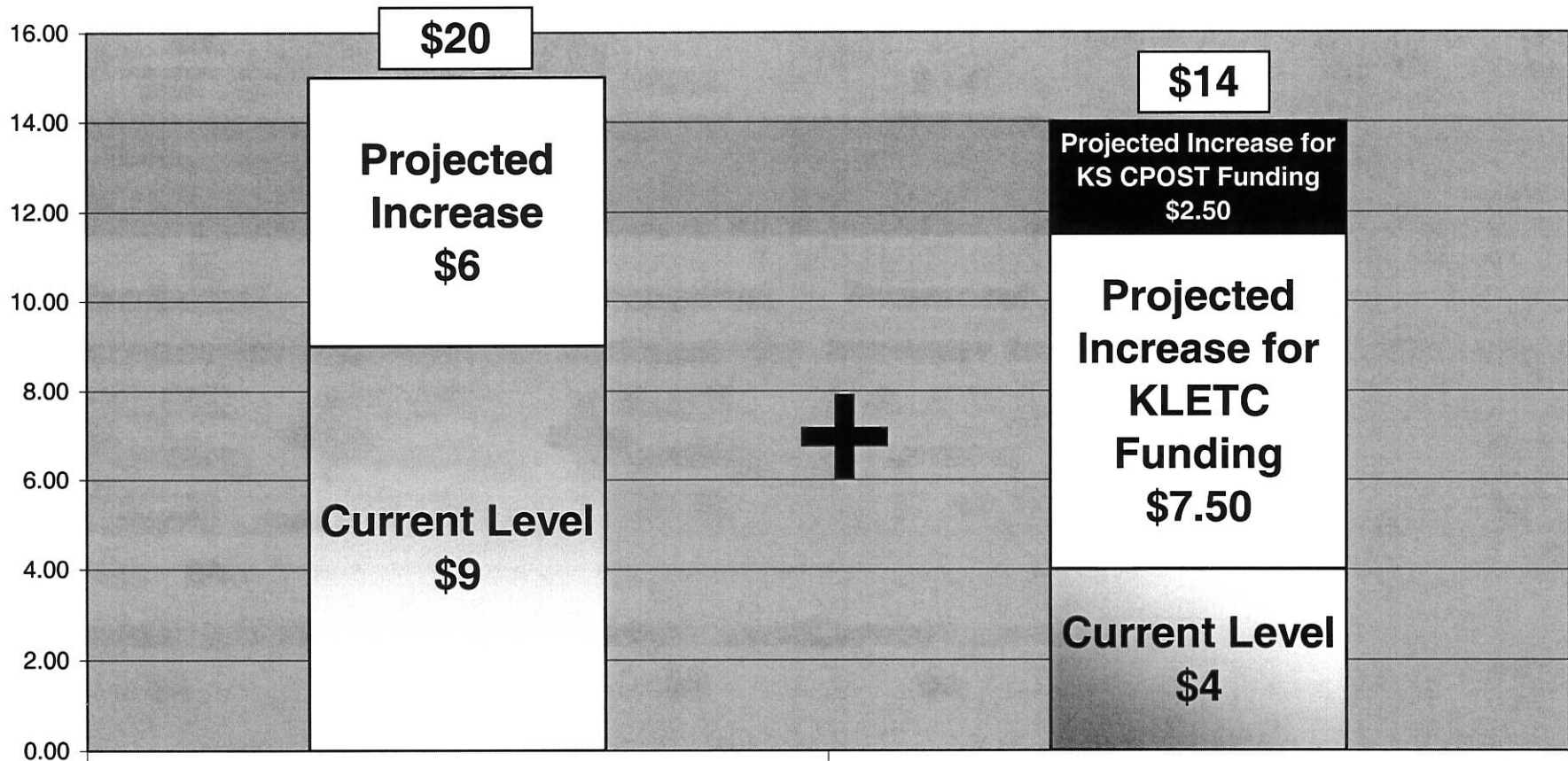
KLETC

All expenses to operate KLETC are taken from the *Law Enforcement Training Center Fund*:

- Staff salaries and benefits;
- Operations;
- Facility maintenance and repairs;
- Capital improvements.



KLETC Strategic Plan Funding Through Increased Docket Fee Remittance Levels

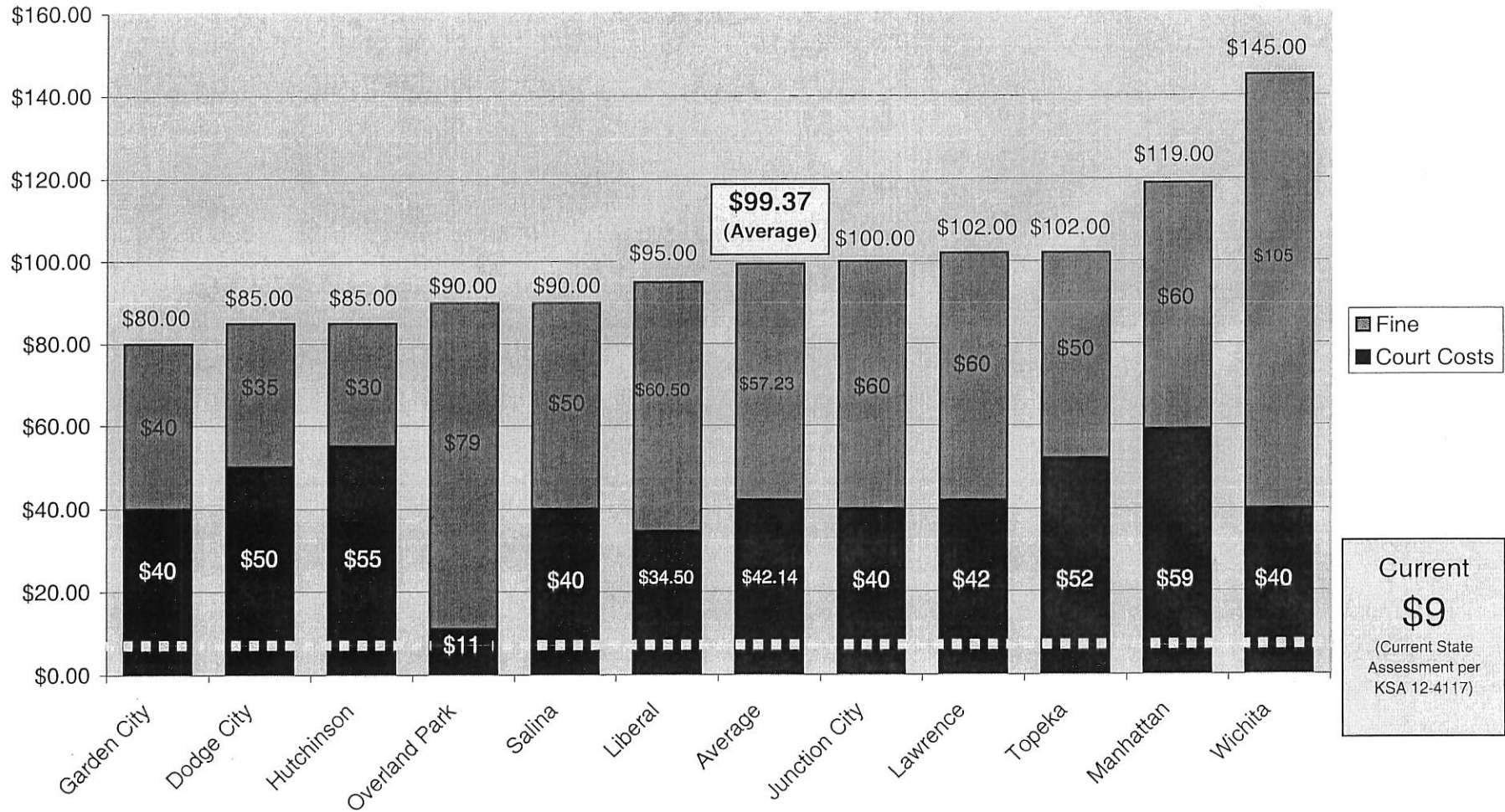


District Court Remittance Level (43% of the Projected Annual Revenue)

Municipal Court Remittance Level (57% of the Projected Annual Revenue)

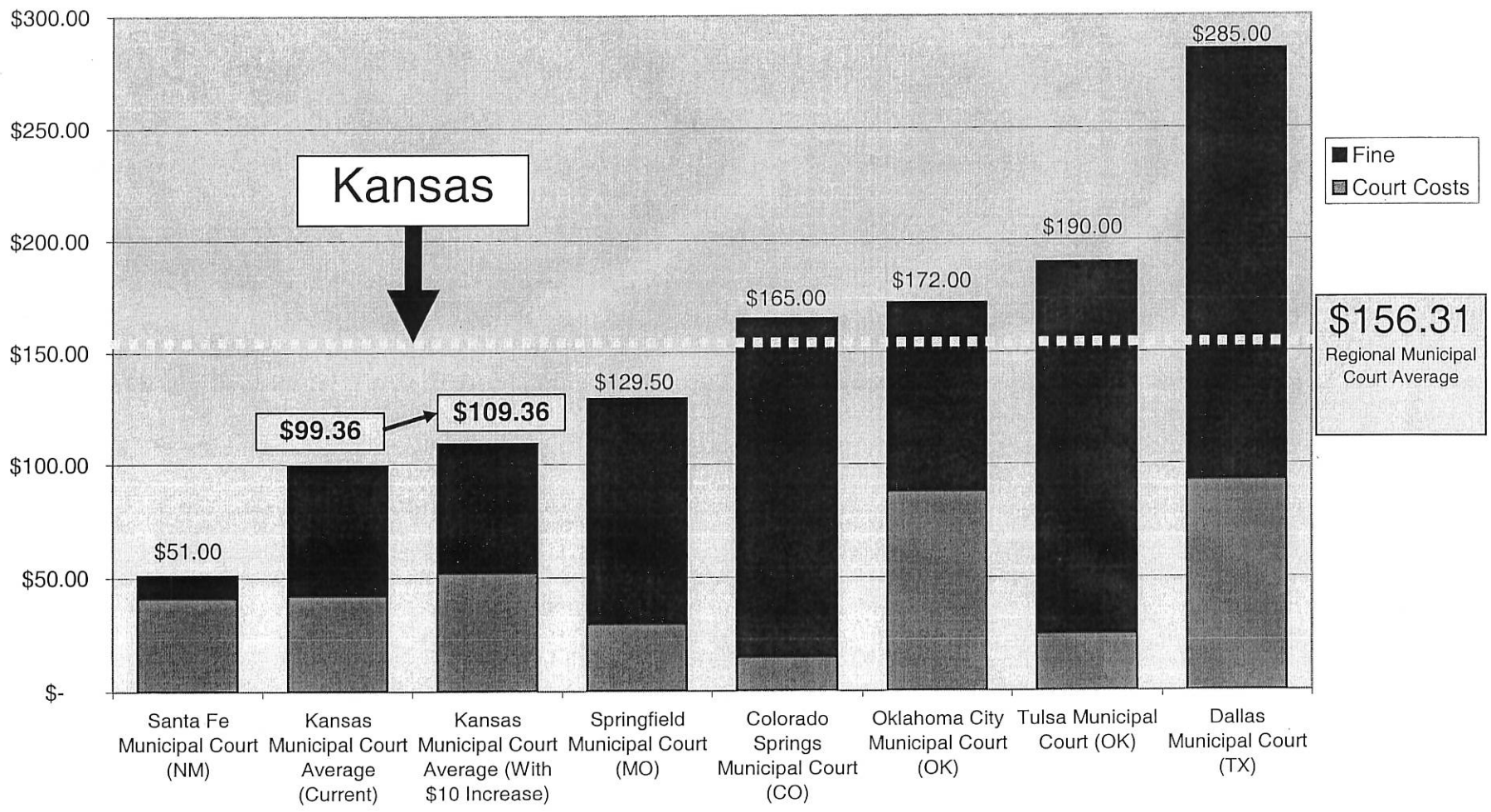
KANSAS MUNICIPAL COURTS

Current Total Cost for Traffic Ticket in Municipal Courts Throughout Kansas
(Running Red Light used as Violation for Comparison)



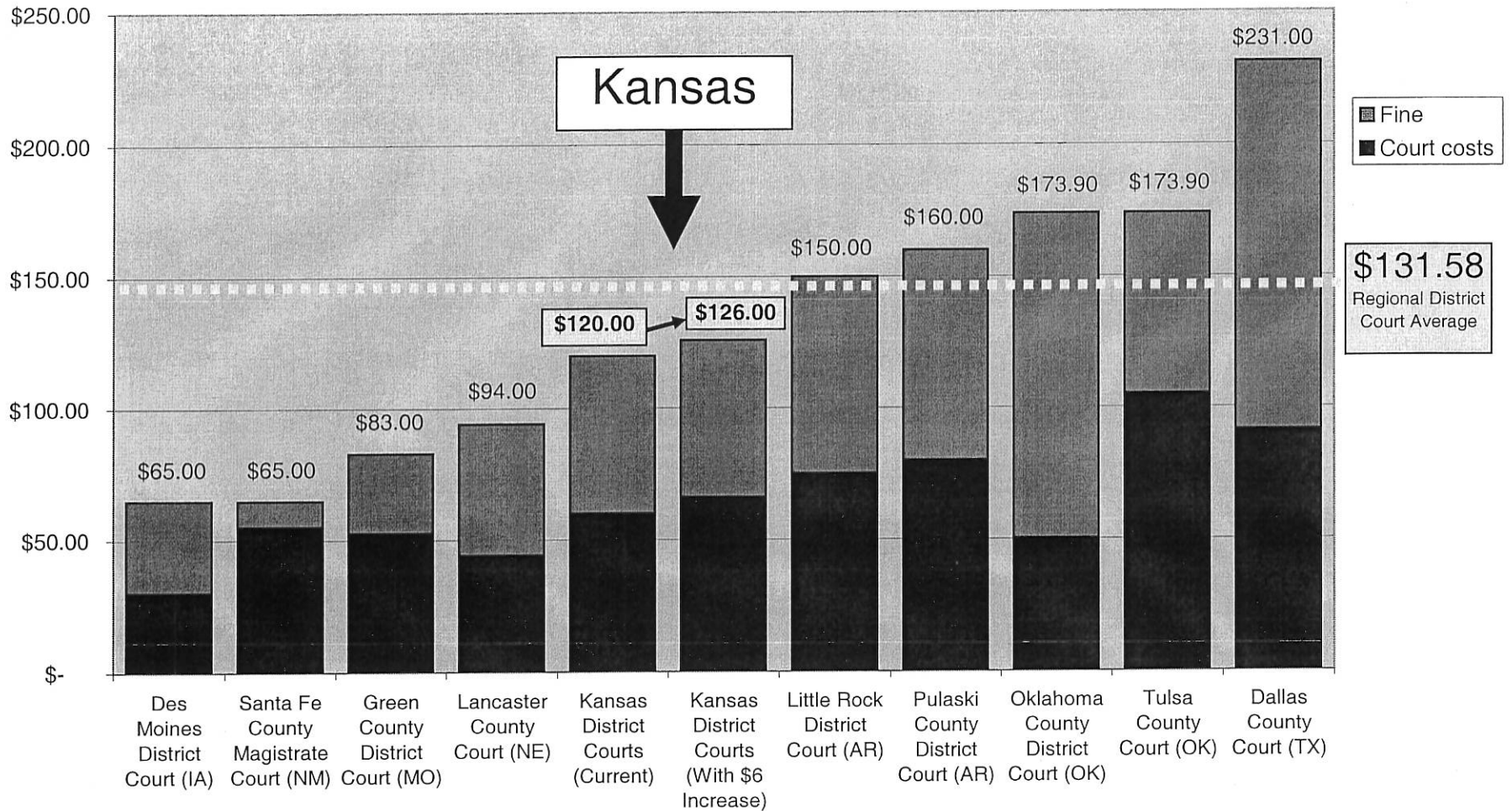
REGIONAL MUNICIPAL COURTS

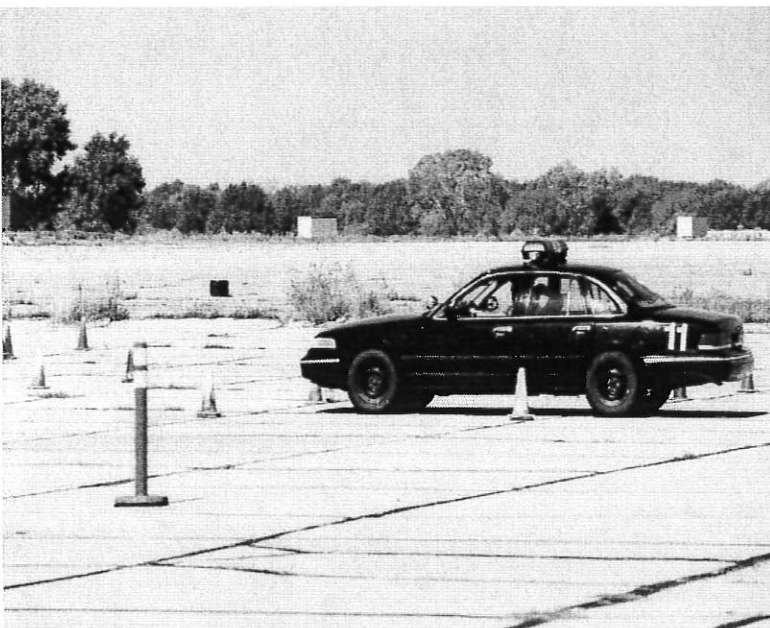
Total Cost for Traffic Ticket in Municipal Courts Throughout the Region
(Running Red Light Violation used for Comparison)



REGIONAL DISTRICT COURTS

Total Cost for Traffic Ticket in District Courts Throughout the Region
(Running Red Light Violation used for Comparison)

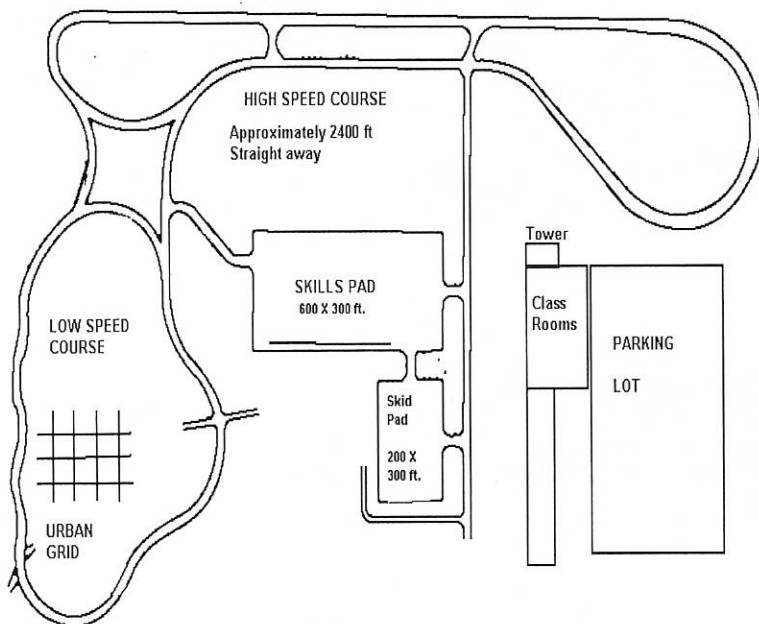




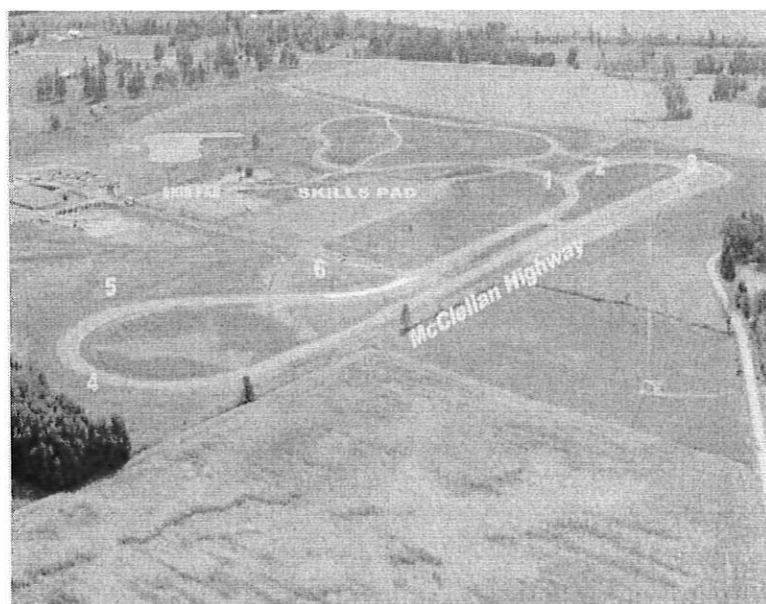
KLETC: World War II concrete airport tarmac used for driver training



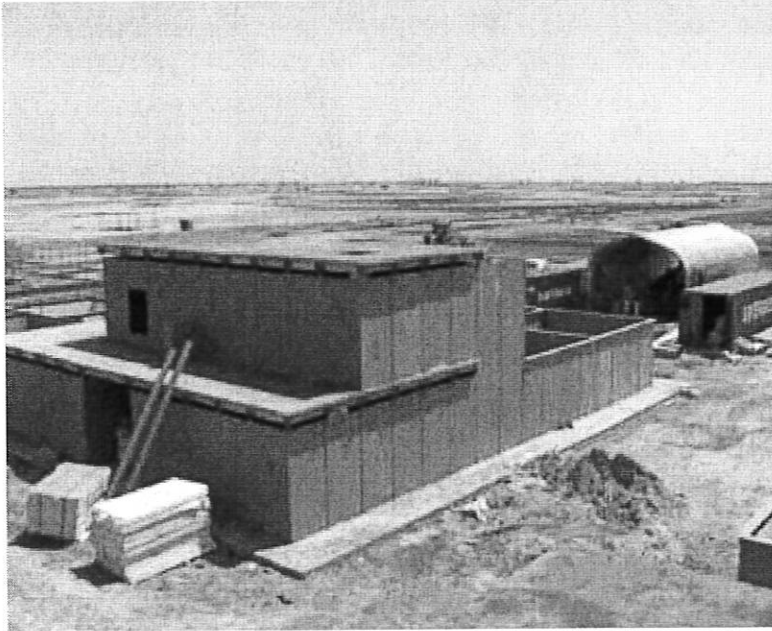
KLETC's concrete driving surface is deteriorating, exposing rebar



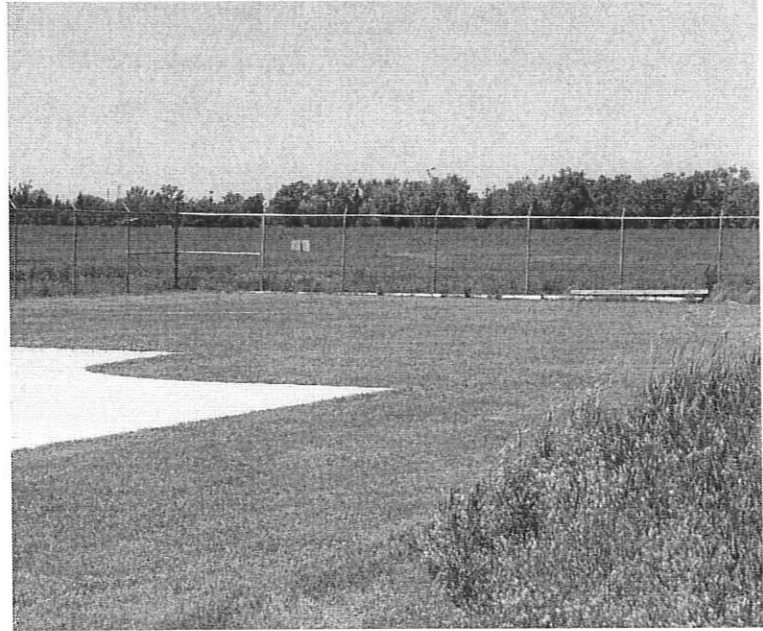
Example of an Emergency Vehicle Driver Training Course



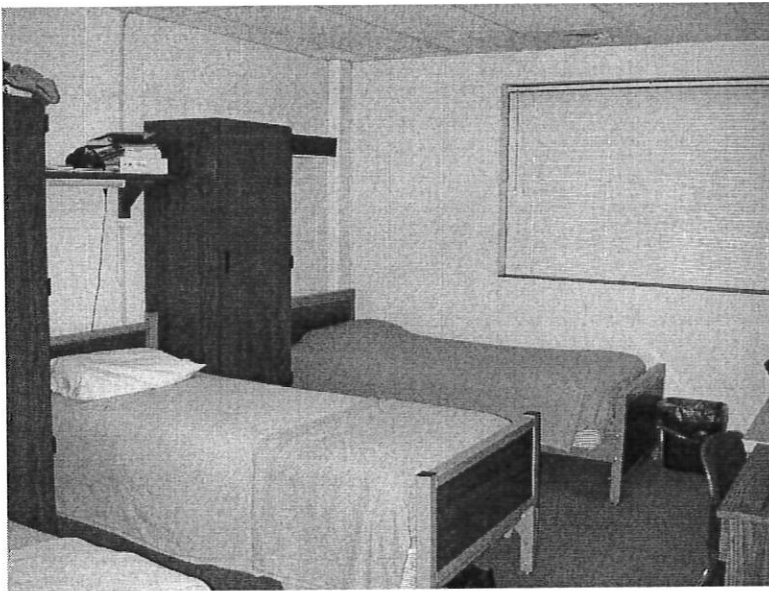
Aerial view of Emergency Vehicle Driver Training Course in Ohio



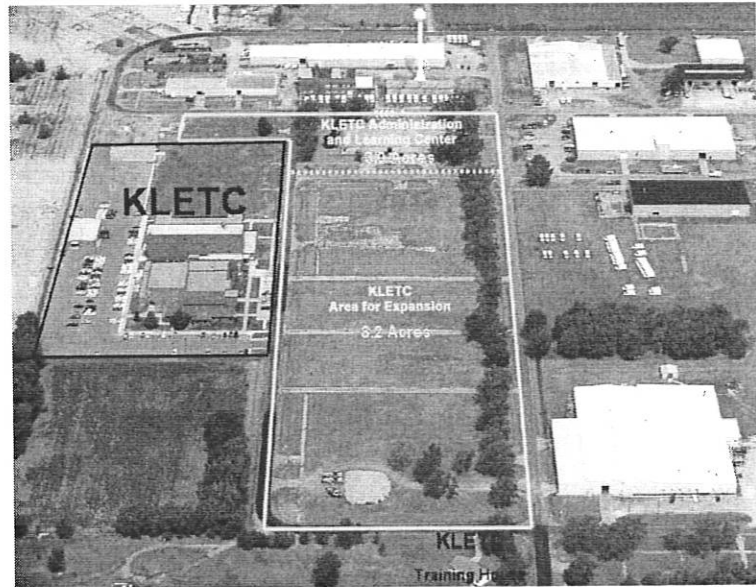
An example of a all-weather enclosed firearms tactical shooting house



Adequate land space is available at KLETC's firearms range to construct a tactical shooting house



Cramped living quarters: Three beds in dorm room designed for two



KU/Board of Regents owns land (8.2 acres) directly across from KLETC

Testimony of Jackie Williams, Chairman

February 16, 2006

Kansas Commission on Peace Officer's Standards and Training.
(KS-CPOST)

Kansas Senate Federal and State Affairs Committee
Room 231-N Statehouse, Topeka, Kansas

**Need to Separate the KS-CPOST Commission Regulatory
Function
from the**

Kansas Law Enforcement Training Center (KLETC)

KLETC is a law enforcement education unit, not a regulatory oversight agency

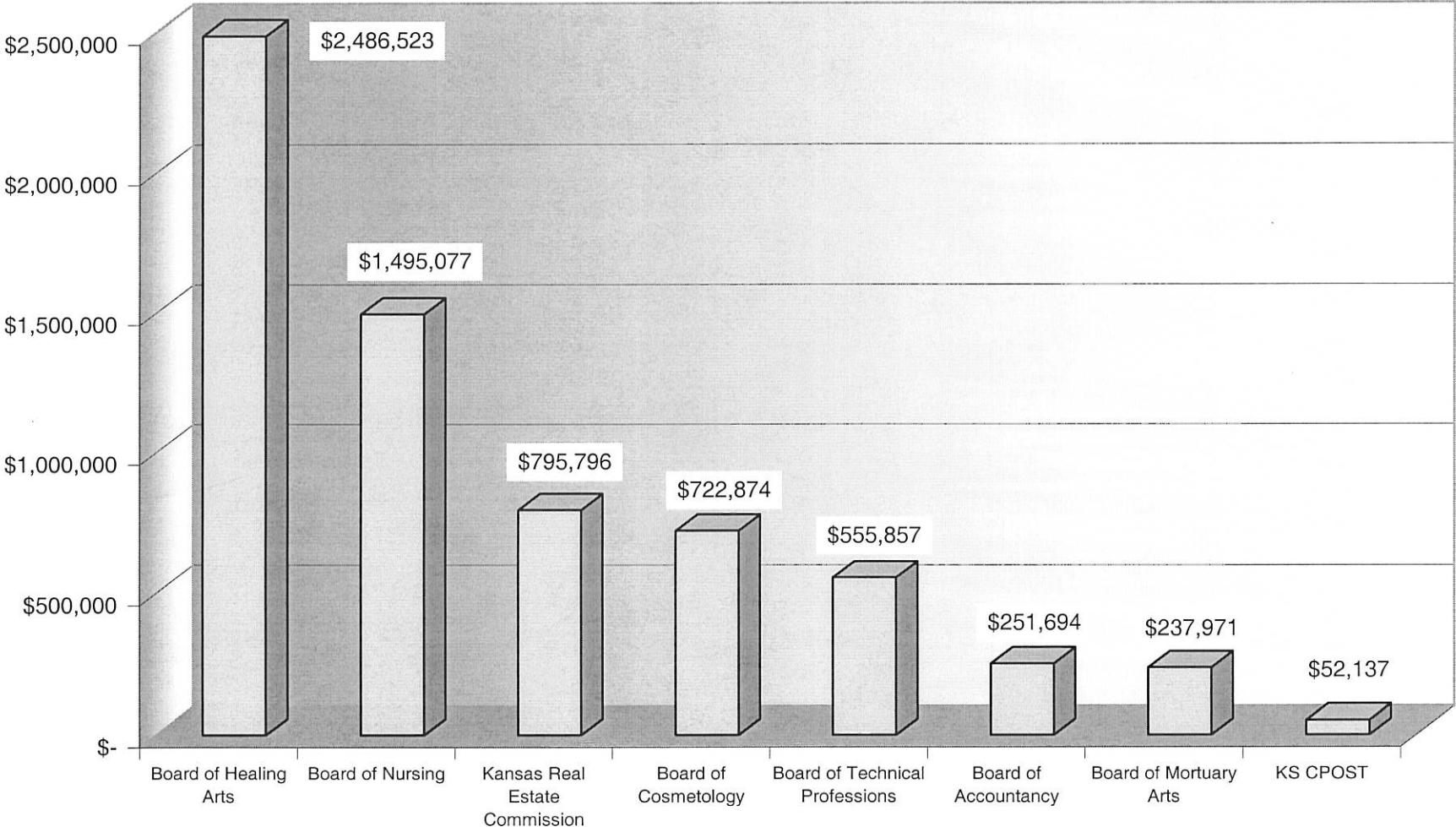
Who "polices" the police? The Kansas Commission on Peace Officers' Standards and Training (KS-CPOST), a board comprised of law enforcement officers and citizens appointed by the Governor, is statutorily given that responsibility. KSA 74-5616 authorizes KS-CPOST to investigate, censure, reprimand, place on probation, suspend, revoke or deny the certification of a law enforcement officer.

However, when the Legislature created the KS-CPOST in 1982, it failed to provide a separate staff or funding source. Overseeing the certifications of Kansas law enforcement officers, the KS-CPOST relies exclusively upon funds and staff provided by the Kansas Law Enforcement Training Center (KLETC). Over the past several years, the Commission has become increasingly responsive in its regulatory function, and has evolved where it now actively investigates allegations of law enforcement misconduct and training act violations. With 246 active case files, the KS-CPOSTS's regulatory function is creating an ever increasing drain on KLETC resources. KLETC cannot employ the necessary staff to effectively manage the current caseload. Every dollar spent on regulation is a dollar taken from law enforcement training.

Not only is the fiscal impact on KLETC a concern, it is inconsistent with KLETC's educational mission to perform regulatory functions. It is a conflict for KLETC to regulate law enforcement officers in the same way it would be a conflict for the KU or Washburn Law Schools to regulate attorneys, or the KU Medical School to regulate physicians. Lawyers, physicians, barbers, embalmers, real estate agents, architects, dieticians and many other professions have separate regulatory agencies. It is as equally important that KS-CPOST should become an agency separate from KLETC with independent staffing and resources.

Kansas has approximately 7500 active and 14,000 inactive law enforcement officers. The projected cost of an independent stand alone KS-CPOST to regulate the certification of these officers is \$700,000 in new funding. Notwithstanding, the difficult budget choices of this legislature, we cannot ignore the necessity of fully funding KS-CPOST, the organization statutorily charged with ensuring the integrity of those officers who perform an essential and vital governmental function.

Annual Budgets for Kansas Regulatory Boards



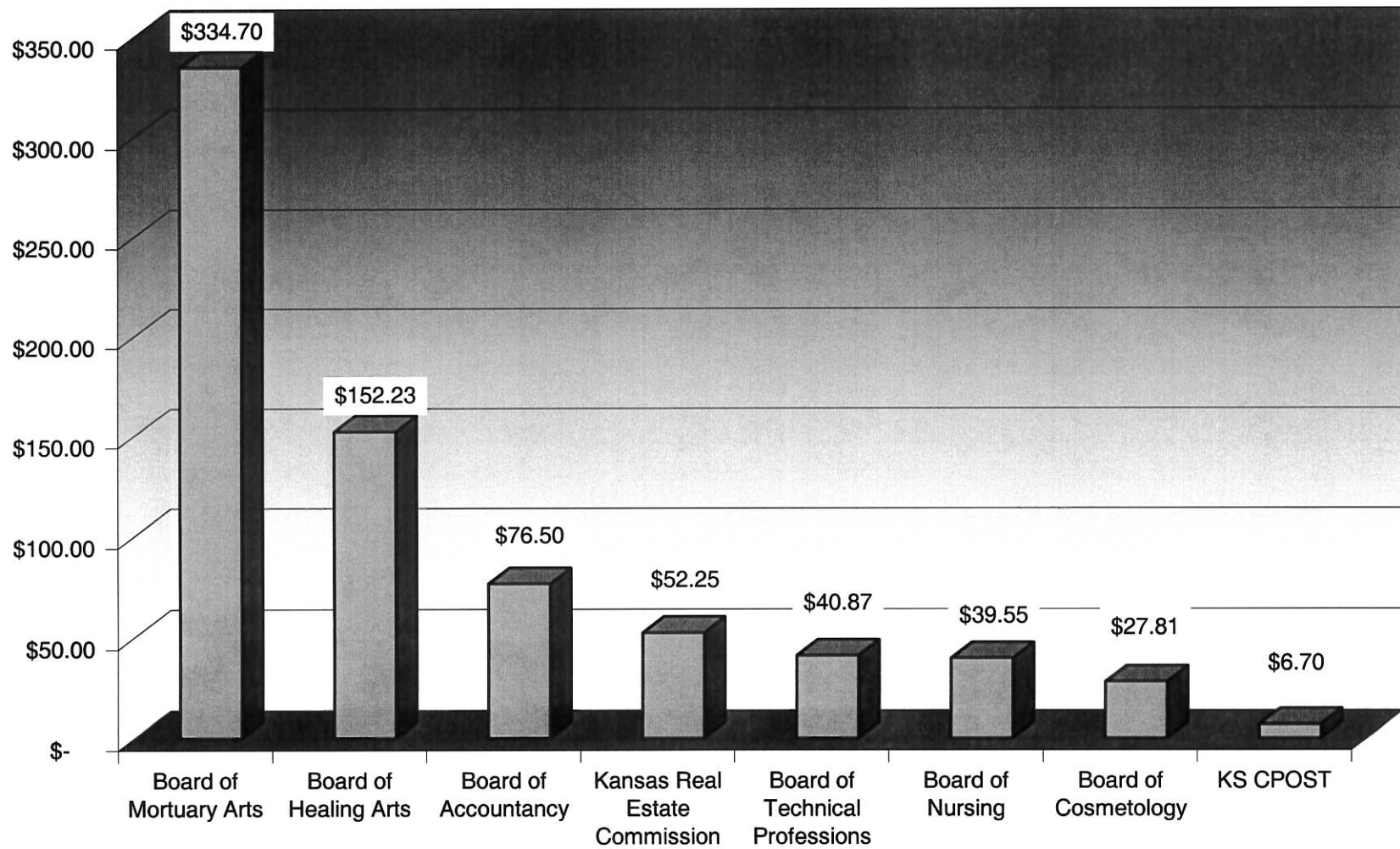
KS•CPOST Budget Projection*

2-3

		FY2006	FY2007	FY2008	FY2009	FY2010	FY2011	FY2012
		July 1, 2005 through June 30, 2006	July 1, 2006 through June 30, 2007	July 1, 2007 through June 30, 2008	July 1, 2008 through June 30, 2009	July 1, 2009 through June 30, 2010	July 1, 2010 through June 30, 2011	July 1, 2011 through June 30, 2012
CPOST Expenditures								
	Growth Rate							
	3.00%							
Personnel								
	Administrator		\$85,000	\$87,550	\$90,177	\$92,882	\$95,668	\$98,538
	Attorney		\$75,000	\$77,250	\$79,568	\$81,955	\$84,413	\$86,946
	Computer Technician		\$45,000	\$46,350	\$47,741	\$49,173	\$50,648	\$52,167
	Office Manager		\$35,000	\$36,050	\$37,132	\$38,245	\$39,393	\$40,575
	Clerical Support Person		\$25,000	\$25,750	\$26,523	\$27,318	\$28,138	\$28,982
	Current Investigator	\$41,200	\$41,200	\$42,436	\$43,709	\$45,020	\$46,371	\$47,762
	Additional Investigator		\$41,200	\$42,436	\$43,709	\$45,020	\$46,371	\$47,762
	Benefits		\$97,272	\$100,190	\$103,196	\$106,292	\$109,480	\$112,765
	Total CPOST Personnel Expense	\$41,200	\$444,672	\$458,012	\$471,753	\$485,905	\$500,482	\$515,497
Other Operating Expenses:			\$95,000	\$97,850	\$102,743	\$107,880	\$113,274	\$118,937
Includes rent and utilities								
Travel Related Expenses			\$40,000	\$41,200	\$42,436	\$43,709	\$45,020	\$46,371
Contractual Services								
	Investigations		\$50,000	\$52,500	\$55,125	\$57,881	\$60,775	\$63,814
	Prosecutions		\$30,000	\$31,500	\$32,445	\$33,418	\$34,421	\$35,454
Hearings Expense		\$5,150	\$10,000	\$10,300	\$10,609	\$10,927	\$11,255	\$11,593
Total Expenses less Salary and Fringe		\$5,150	\$225,000	\$233,350	\$243,358	\$253,816	\$264,745	\$276,169
Total Expenditures		\$46,350	\$669,672	\$691,362	\$715,110	\$739,721	\$765,228	\$791,665
	Fee Level							
Available Funds								
	Beginning Balance		\$0	\$42,828	\$63,966	\$61,356	\$34,135	-\$18,592
	Revenue							
	Docket Fee	\$2.50	\$712,500	\$712,500	\$712,500	\$712,500	\$712,500	\$712,500
	Total Available Funds		\$712,500	\$755,328	\$776,466	\$773,856	\$746,635	\$693,908
Carry Forward: Available Funds less Expense		0	\$42,828	\$63,966	\$61,356	\$34,135	-\$18,592	-\$97,758

*This budget is contingent upon legislative approval of the KS•CPOST becoming a stand-alone entity. This document represents KLETC staff's best estimate of staffing and budgetary needs at the time this document is submitted.

Annual Budgets for Kansas Regulatory Boards (Average Expenditure per Licensee)



Kansas Sheriffs Association

P.O. Box 1853
Salina, Kansas 67402-1853
785-827-2222
Fax 785-827-5215

OFFICERS

President
Sheriff Randy Rogers
Coffey County

First Vice President
Sheriff Jeff Parr
Stafford County

Second Vice President
Sheriff Gary Steed
Sedgwick County

Secretary-Treasurer
Sheriff Bob Odell
Cowley County

Sgt.-at-Arms
Sheriff John Fletcher
Russell County

Executive Director
Darrell Wilson

Office Manager
Carol Wilson

Legal Counsel
Robert Stephan

BOARD OF DIRECTORS

Sheriff Pat Parsons
Logan County - Dist. #1

Sheriff Allan Weber
Gove County - Alternate

Sheriff Buck Causey

Barton County - Dist. #2
Sheriff Charles "Ed" Harbin
Ellis County - Alternate

Sheriff Glen Kochanowski

Saline County - Dist. #3
Sheriff Tracy Ploutz
Ellsworth County - Alternate

Sheriff Lamar Shoemaker

Brown County - Dist. #4
Sheriff David Mee
Nemaha County - Alternate

Sheriff Kevin Bascue

Finney County - Dist. #5
Sheriff Ed Bezona
Stanton County - Alternate

Sheriff Vernon Chinn

Pratt County - Dist. #6
Sheriff Ray Stegman
Kiowa County - Alternate

Sheriff Gerald Gilkey

Sumner County - Dist. #7
Sheriff Steve Bundy
Rice County - Alternate

Sheriff Marvin Sikes

Linn County - Dist. #8
Sheriff Sandy Horton
Crawford County - Alternate

To: Senate Judiciary Committee
Re: KLETC Funding

The Kansas Sheriff's Association comes forward today in support of KLETC's efforts to obtain funding for the Training Center. KLETC plays a critical role in training and educating law enforcement officers in the State of Kansas. KLETC is not only responsible for providing the initial basic training for officers, but further they provide significant advanced training to law enforcement officers throughout the state.

KLETC is in need of funding at 2 different levels, the first being funding for operations at the academy and secondly for expansion of facilities for housing and training. The first aspect as to operations. KLETC is at a critical juncture as to providing training programs to law enforcement if adequate funding is not obtained. In order for KLETC to continue to provide the quality training to law enforcement officers that is needed additional funding will be needed. If the funding is not made available then KLETC will perhaps be forced to make difficult decisions concerning what training that they would be able to make available to law enforcement in Kansas. It would be an injustice to force KLETC to have to cut training programs to law enforcement based solely on dollars and cents. Cutting corners due to budgetary reasons compromises the ability of officers to receive valuable training that is necessary for them to do their jobs. As times change in Kansas and new issues need to be addressed as to law enforcement, than KLETC needs to be afforded the ability to adapt to meet the demands and needs of Law Enforcement.

Secondly, KLETC is in need of additional housing and training space at the academy. Law Enforcement needs today are far different than when the academy was initially founded. This is evident due to the increased length and diversity of the training curriculum of the academy and the number of officers that are trained annually at KLETC. A law enforcement officer today must be versed in so many more areas than ever before, from classroom instruction to hands on training. The academy is striving to meet those needs. In order to do so KLETC needs to be able to house these officers in housing that is adequate to meet the demands of agencies seeking to send officers to the academy. KLETC further needs the classroom space and the hands on training facilities in order to afford officers the best training possible.

Kansas Sheriffs Association



OFFICERS

President
Sheriff Randy Rogers
Coffey County

First Vice President
Sheriff Jeff Parr
Stafford County

Second Vice President
Sheriff Gary Steed
Sedgwick County

Secretary-Treasurer
Sheriff Bob Odell
Cowley County

Sgt.-at-Arms
Sheriff John Fletcher
Russell County

Executive Director
Darrell Wilson

Office Manager
Carol Wilson

Legal Counsel
Robert Stephan

BOARD OF DIRECTORS

Sheriff Pat Parsons
Logan County - Dist. #1
Sheriff Allan Weber
Gove County - Alternate

Sheriff Buck Causey
Barton County - Dist. #2
Sheriff Charles "Ed" Harbin
Ellis County - Alternate

Sheriff Glen Kochanowski
Saline County - Dist. #3
Sheriff Tracy Ploutz
Ellsworth County - Alternate

Sheriff Lamar Shoemaker
Brown County - Dist. #4
Sheriff David Mee
Nemaha County - Alternate

Sheriff Kevin Bascue
Finney County - Dist. #5
Sheriff Ed Bezona
Stanton County - Alternate

Sheriff Vernon Chinn
Pratt County - Dist. #6
Sheriff Ray Stegman
Kiowa County - Alternate

Sheriff Gerald Gilkey
Sumner County - Dist. #7
Sheriff Steve Bundy
Rice County - Alternate

Sheriff Marvin Stites
Linn County - Dist. #8

Sheriff Sandy Horton
Crawford County - Alternate

Once again the Kansas Sheriff's Association feels that we should not determine law enforcement training based solely on dollars and cents, rather the needs of Law Enforcement in Kansas. After all, the training officers receive allows them to provide the best law enforcement services to the citizens they serve. Equally, important the training they receive allows the officers to go home at the end of their shift to their homes and their families. Everyday in Kansas Law Enforcement officers are willing to lay down their lives to protect the citizens of Kansas, we should arm them with the best training and knowledge possible so that they have the greatest opportunity to stay safe.

Another issue that comes forward as part of this bill is the issue of separating KLETC from KPOST (Kansas Police Officer Standards and Training Commission). The Kansas Sheriff's Association believes that it would be in the best interest of Kansas to separate the 2 agencies. After all KLETC is the training body and KPOST is the regulatory and disciplinary body of law enforcement. While the 2 agencies do work together on behalf of law enforcement in Kansas, they have 2 distinctly different functions in Kansas. We believe that great consideration should be given to separating the agencies.

How do we find the necessary funding that is needed to meet KLETC's needs and to find funding for KPOST. I know that there has been discussion as to how to acquire the necessary funding for KLETC. Discussions have ranged from Increased Docket Fees, vehicle registration fees, and even the possibility to charge local law enforcement agencies tuition fees.

The Kansas Sheriff's Association believes that there is one solution that is acceptable and would in fact support an increase in docket fees for District and Municipal courts in Kansas. Currently docket fees are used to support KLETC. The simple and most logical solution would be to increase these fees. This would result in not burdening the honest, hard working taxpayer in Kansas. Rather place the burden on those that break the law.

Kansas Sheriffs Association

P.O. Box 1858
Salina, Kansas 67402-1853

785-827-2222

Fax 785-827-5215

OFFICERS

President
Sheriff Randy Rogers
Coffey County

First Vice President
Sheriff Jeff Parr
Stafford County

Second Vice President
Sheriff Gary Steed
Sedgwick County

Secretary-Treasurer
Sheriff Bob Odell
Cowley County

Sgt.-at-Arms
Sheriff John Fletcher
Russell County

Executive Director
Darrell Wilson

Office Manager
Carol Wilson

Legal Counsel
Robert Stephan

BOARD OF DIRECTORS

Sheriff Pat Parsons
Logan County - Dist. #1
Sheriff Allan Weber
Gove County - Alternate

Sheriff Buck Causey
Barton County - Dist. #2
Sheriff Charles "Ed" Harbin
Ellis County - Alternate

Sheriff Glen Kochanowski
Saline County - Dist. #3
Sheriff Tracy Ploutz
Ellsworth County - Alternate

Sheriff Lamar Shoemaker
Brown County - Dist. #4
Sheriff David Mee
Nemaha County - Alternate

Sheriff Kevin Bascue
Finney County - Dist. #5
Sheriff Ed Bezona
Stanton County - Alternate

Sheriff Vernon Chinn
Pratt County - Dist. #6
Sheriff Ray Stegman
Kiowa County - Alternate

Sheriff Gerald Gilkey
Sumner County - Dist. #7
Sheriff Steve Bundy
Rice County - Alternate

Sheriff Marvin Stites
Linn County - Dist. #8

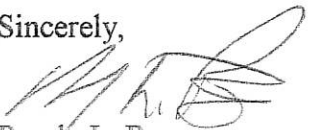
Sheriff Sandy Horton
Crawford County - Alternate

The Kansas Sheriff's Association adamantly opposes any language that would open the door to charging local law enforcement agencies tuition fees to send officers to the academy. KLETC estimates that it costs over \$9,000 per officer to attend the 14 week basic training. I have polled and spoken to numerous sheriffs throughout the state. These sheriffs represent large and small agencies respectfully. All have unanimously stated that if they were required to pay tuition fees to send officers to the academy this would devastate their budgets and would adversely impact sheriff's offices throughout the state. Sheriff's would be forced to choose between necessary equipment, wages or training dollars. In many cases the sheriff would need to request a budget increase to cover the cost of sending an officer to the academy. This could result in local government having to raise taxes. We believe this to be an unfunded mandate as state law requires officers to be certified in Kansas and must meet statutory requirements. As well, local law enforcement does their part in generating revenue to support KLETC every time we write a citation or arrest an individual who if convicted pays court costs which results in monies for KLETC. Local government bears all the costs related to these citations and arrests, from paying for the traffic citations books, to the equipment and salaries of officers. Local government can not afford to pay tuition fees.

The Kansas Sheriff's Association would support this bill favorably with the condition that the only funding source would be through Docket Fees.

Thank You for you time and please take into consideration local law enforcement when debating this bill.

Sincerely,



Randy L. Rogers
Legislative Chair
Kansas Sheriff's Association

Senate Committee on Federal and State Affairs
SB 567 Testimony by Mike Watson
Kansas Association of Chiefs of Police
February 16, 2006

Chairman Brungardt and members of the committee,

The Kansas Association of Chiefs of Police (KACP) supports increased funding for the Kansas Law Enforcement Training Center (KLETC) and the establishment of the Kansas Commission on Peace Officers' Standards and Training (KSCPOST) as a separate, stand alone regulatory agency through increases in district and municipal court docket fees.

Law enforcement is one of the few basic services that local and state government is obligated to provide for their citizens. Quality training is the most critical element that must be provided for those men and women who enter law enforcement and put their lives on the line. Citizens expect and deserve that their officers be adequately trained in order that they can perform at the highest level and meet the rising standards of the country's legal system. The state of Kansas should regulate and investigate the training and conduct of the law enforcement officers it certifies. Law enforcement officers and citizens deserve no less.

Most law enforcement officers throughout the state of Kansas receive their basic training at the Kansas Law Enforcement Training Center. KLETC is a professional, cost effective solution for the law enforcement training needs in the state of Kansas. They utilize a statewide, standardized course of instruction that does not need to be duplicated in the hundreds of law enforcement jurisdictions across the state. The citizenry and the courts expect officers to be trained in contemporary issues ranging from criminal law to weapons proficiency to scientific methods of collecting evidence for DNA analysis. The officers are expected to provide services in innumerable areas such as medical treatment, counseling, criminal and civil law, auto mechanics, accounting, and a myriad of other disciplines. Although there have been efforts to maintain and upgrade the facilities at KLETC the administration has not been able to secure the funding necessary to ensure the infrastructure is adequate. These upgrades are urgently needed to provide the appropriate training for our law enforcement officers who serve and protect the citizens of the state of Kansas.

The training and certification of law enforcement officers in the state of Kansas must have oversight and the responsible agency (KSCPOST) must have the ability to investigate and regulate such training and certification. For years the precursor of KSCPOST has not been allocated the necessary resources to appropriately regulate and investigate Kansas law enforcement officers. This organization has relied upon KLETC for resources. It is time for a separate, stand alone regulatory agency with appropriate funding for regulating and investigating the certification and training of Kansas law enforcement officers.

Thank you for your time and consideration of our testimony.



Kansas Association of Chiefs of Police



Kansas Peace Officers' Association



Kansas Sheriffs' Association

Kansas Law Enforcement Associations' Resolution in Support of Additional KLETC Funding

WHEREAS law enforcement is a core function of government and the citizens of Kansas expect that law enforcement officers are properly trained to handle even the most challenging and complex duties, and

WHEREAS nearly seven out of ten law enforcement officers in Kansas receive their training from the Kansas Law Enforcement Training Center (KLETC), and

WHEREAS at a time when changes in the law environment requires more law enforcement training, should KLETC fail to receive a funding increase, it would be forced to cut almost \$700,000 (19%) from its FY07 budget, and the potential cost of reduced safety to communities in Kansas would be immeasurable, and

WHEREAS the Kansas Law Enforcement Training Center continues to operate with funding levels established in 2002 providing its entire budget for salaries, operations and facilities, now therefore

BE IT RESOLVED that the undersigned professional Kansas law enforcement associations urge the Kansas Legislature to pass legislation approving an increase in funding for the Kansas Law Enforcement Training Center during the 2006 Legislative Session, and

BE IT RESOLVED that the professional law enforcement associations are united in their opposition to a "user fee" funding source as we believe that it is the law enforcement officers' actions in each community which contribute significantly to the district and municipal court docket fee collections, and

BE IT FURTHER RESOLVED that any increase in funding for the Kansas Law Enforcement Training Center provide sufficient resources not only to sustain salary and operations of KLETC but also critical capital outlay projects that will allow KLETC to fulfill its statutory mission, specifically 126 additional dormitory sleeping beds, multipurpose center, emergency vehicle operations driver training course, and a tactical firearms "training house."

Kelly D. Parks, President
Kansas Association of Chiefs of Police

Kevin Cavanaugh, President
Kansas Peace Officers' Association

Jeff D. Parr, President
Kansas Sheriffs' Association

Date: January 3, 2006

E

KANSAS PEACE OFFICERS ASSOCIATION

February 16, 2006

Senator Brungardt, Chairman
Senate Federal and State Affairs Committee

RE: HB-2880

Thank you for allowing me to appear before you and testify on behalf of the Kansas Peace Officers Association in support of increased funding for the Kansas Law Enforcement Training Center. The KLETC is currently operating an academy that is struggling to accomplish its mission facing the demands required of it in 2006 from the disadvantage of 2002 funding. The KPOA believes that adequate funding for the operation of our state's basic law enforcement training academy is absolutely vital to guarantee the continuation of the high standards of professionalism our citizens have come to expect.

- Without increased funding to maintain adequate instruction staff, training programs crucial for Kansas law enforcement officers to maintain skills vital to carrying out their mission of protecting lives and property will be reduced or eliminated.
- Without increased funding to build adequate dormitory space, student overcrowding will continue to overstress the academy infrastructure and undermine student morale.
- Without increased funding to build a new Emergency Vehicle Operations Course (EVOC) composed of varying driving environments and roadway surfaces, officers will not be exposed to the type of emergency vehicle driver training their duties require. This is especially important knowing that, in today's law enforcement environment, more officers are injured annually in the operation of emergency vehicles than in firearms related police actions.

- Without increased funding to provide for an independent Kansas Commission on Peace Officer Standards and Training (Kansas CPOST), investigations into officer misconduct and training act violations will fall further behind and, at the same time, continue the ethical dilemma of tasking the state's training academy with staffing and financially supporting the commission investigating law enforcement misconduct.

The Kansas Peace Officers Association respectfully requests that this committee support an increase in the Municipal and District court docket fees to adequately fund the Kansas Law Enforcement Training Center in order to ensure the continued growth and improvement critical to the future of Kansas law enforcement training.

Kevin D. Cavanaugh, President
Kansas Peace Officers Association

An act amending KSA 22-4606 sec 2 as follows:

A 15 member task force shall be appointed by the Governor to design a method for the uniform collection of data. The task force shall include representatives of the Kansas attorney general's office, the Kansas highway patrol, city and county law enforcement agencies, the Hispanic and Latino American affairs commission, the advisory commission on African American affairs, the department of revenue, Kansas human rights commission, Kansas district courts, Kansas civil rights advocates and others who can assist in the uniform collection of data. ~~The task force shall make reports and recommendations to the governor and the legislature not later than November 1, 2005.~~
The Governor's Task Force on Racial Profiling shall work in partnership with local and state law enforcement agencies to review current policies and make recommendations for future policies and procedures statewide for the full implementation of all sections of K.S.A. 22-4606 through 22-4611.

(a) Members shall serve terms of two years. Vacancies shall be filled in the same manner as the original appointments and for the remainder of the unexpired term. Members whose terms have expired shall continue to serve until their successors have been named. All members may serve no more than two terms.

(d) The task force shall meet on the call of the chairperson at least quarterly or as often as necessary to carry out the functions of the ~~Commission~~ Task Force.

(e) The staff of the Kansas Advisory Commission on African American Affairs and the Kansas Hispanic/Latino American Affairs Commission shall provide administrative support to the ~~Commission~~ Task Force and its chairperson.

(f) Members of the ~~Commission~~ Task Force attending meetings of the committee, or attending a subcommittee meeting authorized by the ~~Commission~~ Task Force, shall be paid travel expenses and subsistence expenses as provided in K.S.A. 75-3212 and amendments thereto.

(g) Conduct public hearings and meetings as needed to involve and inform the public on the issues related to racial profiling.

(h) The ~~Kansas Commission~~ Governor's Task Force on Racial Profiling shall make a report of its activity to the public each calendar year.

(i) The provision of this section shall expire on July 1, 2012.