

MINUTES OF THE SENATE COMMERCE COMMITTEE

The meeting was called to order by Chairperson Nick Jordan at 8:30 A.M. on March 3, 2006 in Room 123-S of the Capitol.

All members were present except:

Jay Emler- excused
Susan Wagle- excused

Committee staff present:

Kathie Sparks, Kansas Legislative Research Department
Helen Pedigo, Revisor of Statutes
Alex Lovely

Conferees appearing before the committee:

Steve Radley, Director for the Center for Entrepreneurship
Wally Kearns, Kansas Small Business Development Center
Patty Clark, Department of Commerce

Others attending:

Chairperson Jordan announced the Committee would be working **SB 382-Developing responsible youth act** and introduced Senator Kelly to explain the subcommittee's amendment for the bill. (Attachment 1) Senator Kelly stated the sub-committee met looking for a way to insure if they added the program they were not overlapping any program that already exists and the way to do that was through the Commerce Secretary. The subcommittee more clearly defined what they mean by "after school program". On line 23 of page 2 of the bill striking language and adding "an evaluation of pre-vocational skills and options offered and acquired, physical fitness improvement, academic improvement and mentoring participation, as well as".

Upon the conclusion of Senator Kelly's explanation of the amendment, there was discussion with the Committee.

Senator Wysong made a motion to move the Kelly amendment. Seconded by Senator Reitz. Motion carried.

Senator Kelly made a motion to move the bill out favorably as amended. Seconded by Senator Wysong. Motion carried.

Chairperson Jordan introduced Steve Radley, Director for the Kansas Center for Entrepreneurship to give an update on the Center to the Committee. Mr. Radley presented written testimony. (Attachment 2) Mr. Radley stated the mission of the Center was to be accomplished through the development and maintenance of a comprehensive website of resource providers, the creation of a call center, better coordination of existing and new entrepreneurship education programs and improved access to financing of entrepreneurs. Mr. Radley stated he would be giving the Committee a progress report on these responsibilities as outlined in the Kansas Economic Growth Act of 2004. Mr. Radley stated that on March 9th, the Kansas Center for Entrepreneurship is officially launching the NetWork Kansas call center, networkkansas.com website, and the StartUp Kansas fund. NetWork Kansas will provide the first statewide network of resources that provide business building services to entrepreneurs and small business owners. NetWork Kansas launches with more that 240 resources participating as NetWork Kansas partners. Partners include small business development centers, economic development organizations, Kansas Department of Commerce field offices specializing in local and international issues, workforce development centers, local and regional financial assistance organizations, enterprise facilitation projects, technical assistance centers, organizations that specialize in helping women-owned businesses, and more.

NetWork Kansas provides the following services specific to the vision of the Kansas Economic Growth Act of 2004 including the following: NetWork Kansas provides a seamless integrated network of small business service providers in Kansas; NetWork Kansas provides access through one central portal, our toll

free number and networkkansas.com; NetWork Kansas provides database tools for client tracking and statistical measurement to facilitate evaluation. A part of the Center's responsibilities is to work efficiently and effectively with existing resources. The Kansas Department of Commerce, which by statute administers the Center, contracted with the Kansas Small Business Development Center for the operation of the Center. Fort Hays State provides administrative support for the Center. The Center is provided office space at Wichita State University. Wichita State University faculty provides assistance to the Center and the students are employed as Call Center Staff. Kansas, Inc. has been on the ground floor with development of the evaluation model the Center will use to report back to the administration and the legislature.

The Kansas Economic Growth Act of 2004 also established the Kansas Community Entrepreneurship Fund., StartUp Kansas. The mission of StartUp Kansas is to partner with business support providers who assist in providing or obtaining funding for Kansas entrepreneurs in for-profit business startups and expansions in rural and distressed communities.

The last item outlined in the Kansas Economic Growth Act of 2004 is to inventory all entrepreneurial education currently being offered throughout the state. The Center of Entrepreneurship at Wichita State received a grant from the Center to perform this task.

In closing, Mr. Radley stated that the launch on March 9th will begin an ongoing process of connecting entrepreneurs and small business owners with the education, expertise and economic resources they need when they need them.

Upon conclusion of Mr. Radley's presentation there was discussion with the Committee. Senator Kelly entered the discussion regarding the counselors for the Call Center. Mr. Radley stated the counselors are students from Wichita State University majoring in entrepreneurship and he has been very pleased with their performances up to this point. Mr. Kearns representing the Kansas Small Business Development Center entered the discussion stating that the students do not provide direct services. The students take the information and then call someone from the resource list to research and get the needed information and then call the caller back. Senator Kelly joined asking how to get on the resource list. Mr. Radley stated it is an application process; anyone interested needs to contact the Center and they will send out an enrollment survey. Mr. Radley also stated they have already scheduled 14 town hall meetings to go into the communities and talk about entrepreneurship and what resources are available. Patty Clark with the Department of Commerce entered the discussion stating these guys have done an incredible job getting things done. The next big step is going to be the marketing of the Call Center and the website. Senator Wysong entered the discussion stating he is impressed by the enthusiasm of the Center. Senator Jordan entered the discussion stating the Center is extremely important to the rural communities of Kansas and he is very excited. Mr. Kearns entered the discussion stating that the Center can really make a difference for the Kansas economy.

Meeting adjourned at 9:10 a.m. with the next meeting scheduled for March 7, 2006 at 8:30 a.m. in room 123S.

SENATE BILL No. 382

By Committee on Ways and Means

1-18

Senate Commerce Committee
March 3, 2006
Attachment | - |

9 AN ACT concerning workforce development; implementing the devel-
10 oping responsible youth act.

11
12 *Be it enacted by the Legislature of the State of Kansas:*

13 Section 1. Sections 1 through 7, and amendments thereto, shall be
14 known and may be cited as the developing responsible youth act.

15 Sec. 2. In accordance with appropriation acts, the secretary of com-
16 merce shall provide grants to eligible administrative entities, as described
17 in section 3, and amendments thereto, for the purpose of establishing and
18 carrying out after-school programs that provide the following
19 components:

- 20 (a) Pre-vocational employment skills and options;
- 21 (b) lifetime physical fitness activities;
- 22 (c) academic tutoring and academic enhancement;
- 23 ~~(d) values education, and~~
- 24 ~~(e) mentoring.~~

25 Sec. 3. For purposes of this act, "eligible entity" means a unit of local
26 government, a nonprofit organization or a faith-based organization which
27 partners with public and private organizations and businesses and which
28 agrees to perform the following:

- 29 ~~(a) Submit a plan to provide learning opportunities described in sec-~~
30 ~~tion 2, and amendments thereto, for qualified youth;~~
- 31 (b) abide by such guidelines as may be required by the secretary; and
- 32 (c) agree to pay at least 20% of the cost of the program; however, in-
33 kind contributions, in an amount not to exceed 50%, may count towards
34 such payment. Grants may be awarded for up to 80% of the cost of the
35 program.

36 Sec. 4. (a) Except as provided in subsection (b), the secretary may
37 not make a grant under section 2, and amendments thereto, to an eligible
38 entity, unless the entity agrees that such entity will use all amounts re-
39 ceived from such grant to establish and carry out a program to provide
40 after-school programs to eligible individuals described in subsections (a)
41 and (b) of section 5, and amendments thereto, for the purpose of provid-
42 ing after-school programs described in section 2, and amendments
43 thereto, located within the eligible jurisdiction that the entity serves.

(a)
Renumber as (1) through (4).

and 4

¶(b) The secretary shall provide technical assistance to grantees, evaluate programs for effectiveness and act as a data repository to coordinate funding and ensure that state funds are not directed toward program duplication. The secretary may enter into agreements to carry out the provisions of this subsection.

:
¶(a) "After-school program" means a program which requires meeting for a minimum duration of : (1) Two hours per day during each day school is in session; or (2) six hours per day each weekday for at least five consecutive weeks outside of the school year.
¶(b) "Eligible

Renumber (a) through (c) as (1) through (3).

1 (b) Not more than 10% of amounts received from a grant under sec-
2 tion 2, and amendments thereto, for any fiscal year may be used for the
3 cost of administration and the acquisition of supplies, tools and other
4 equipment.

5 (c) Grants awarded shall be for a term of 3 years and are renewable.

6 Sec. 5. (a) An individual shall be eligible to participate in a program
7 described in subsection (a) of section 4, and amendments thereto, only if
8 the individual is attending school and is enrolled in grades 6, 7, 8 or 9.

5,

9 (b) The secretary may charge a fee to participants to recoup the par-
10 tial or total cost of participation in the program; however, no individual
11 shall be denied access to the program because of inability to pay such
12 fee.

13 (c) No individual shall be excluded from participation in, denied the
14 benefits of, subjected to discrimination under, or denied employment in
15 the administration of or in connection with any program described in
16 subsection (a) of section 4, and amendments thereto, because of race,
17 color, religion, sex, national origin, age, disability or political affiliation or
18 belief.

19 Sec. 6. The secretary shall annually submit a report to the house
20 economic development committee, the house commerce and labor com-
21 mittee and the senate commerce committee detailing the manner in
22 which funds were spent pursuant to section 1, et seq., and amendments
23 thereto. Such report shall include ~~the nature of the work performed by~~
24 ~~participating youths, the percentage of funds expended for administrative~~
25 ~~expenses, findings on the educational, criminal and occupational dispo-~~
26 ~~sition of participating youths and an evaluation of the program as a whole~~
27 including a recommendation concerning continuation of the program.
28 The report to the house economic development committee, the house
29 commerce and labor committee and the senate commerce committee
30 under this section shall be made by the secretary either (a) by publishing
31 such report on the internet and by notifying each member of the com-
32 mittee that the report is available and providing, as part of such notice,
33 the uniform resource locator (URL) at which such report is available, or
34 (b) by submitting copies of such report on CD-ROM or other electron-
35 ically readable media to such committees.

an evaluation of pre-vocational skills and options offered
and acquired, physical fitness improvement, academic
improvement and mentoring participation, as well as

36 Sec. 7. The secretary of commerce may adopt rules and regulations,
37 as defined in K.S.A. 77-415, and amendments thereto, to effectuate the
38 purpose of this act.

39 Sec. 8. This act shall take effect and be in force from and after its
40 publication in the statute book.



Senate Commerce Committee

March 3, 2006

Testimony by:

**Steve Radley, Director,
Kansas Center for Entrepreneurship
NetWork Kansas**

Kansas Center for Entrepreneurship Update

Chairperson Brownlee and Chairperson Jordan, I'm Steve Radley, Director of the Kansas Center for Entrepreneurship. This morning I will provide a brief update concerning the Kansas Center for Entrepreneurship.

History

In 2004 the Legislature passed and the Governor signed the Kansas Economic Growth Act. Incorporated in that landmark legislation was the creation of the Kansas Center for Entrepreneurship with a statutory mission of strengthening the entrepreneurial culture of Kansas. That mission was to be accomplished through the development and maintenance of a comprehensive website of resource providers, the creation of a call center, better coordination of existing and new entrepreneurship education programs and improved access to financing for entrepreneurs. Today is a progress report on all these responsibilities as outlined in the Act.

Mission of the Center

On March 9, the Kansas Center for Entrepreneurship is officially launching the NetWork Kansas call center, networkkansas.com website, and the StartUp Kansas fund. We want to remind you of the luncheon we are hosting to celebrate that launch at Top of the Tower at noon on March 9. NetWork Kansas will provide the first statewide network of resources that provide business building services to entrepreneurs and small business owners. NetWork Kansas launches with more than 240 resources participating as NetWork Kansas partners. Partners include small business development centers, economic development organizations, Kansas Department of Commerce field offices specializing in local and international issues, workforce development centers, local and

Senate Commerce Committee

March 3, 2006

Attachment

2-1

regional financial assistance organizations, enterprise facilitation projects, technical assistance centers, organizations that specialize in helping women-owned businesses, and more.

Entrepreneurs and small business owners call our toll free number, 877-521-8600 to speak with a NetWork Kansas counselor. NetWork Kansas Counselors ask the entrepreneurs a series of questions including physical location, business concept and stage, and what their specific needs and challenges are at this point in the business lifecycle. The counselors then use our unique database tool, Resource Navigator, to research the statewide network and determine which resource(s) can best assist the entrepreneur. The counselors will then facilitate a connection between the entrepreneur and the service provider. NetWork Kansas also utilizes a powerful client-contact database called Biz-Trakker to allow for measurement and evaluation as we follow the client through the network. Entrepreneurs and small business owners can also utilize Resource Navigator online by going to networkkansas.com. The NetWork Kansas website has a wealth of additional information including entrepreneurial classes offered statewide, economic resources available, and news and events going on throughout Kansas.

NetWork Kansas provides the following services specific to the vision of the Kansas Economic Growth Act of 2004 including the following:

- NetWork Kansas provides a seamless integrated network of small business service providers in Kansas
- NetWork Kansas provides access through one central portal, our toll free number and networkkansas.com
- NetWork Kansas provides database tools for client tracking and statistical measurement to facilitate evaluation.

A part of the Center's responsibilities were to work efficiently and effectively with existing resources. The Kansas Department of Commerce, which by statute administers the Center, contracted with the Kansas Small Business Development Center for the operation of the Center. Fort Hays State provides administrative support for The Center. The Center is provided office space at the WSU Metroplex as an in-kind collaboration with WSU. WSU faculty provide assistance to the Center and WSU students are employed as Call Center staff. All 240 of the resource providers network together for the benefit of the entrepreneurs and the Center has utilized the expertise of KCSOURCELINK and the Kauffman Foundation to employ both Resource Navigator and BizTrakker. Kansas, Inc. has been on the ground floor with development of the evaluation model we will use to report back to the administration and the legislature. We think you will agree we have been proficient in our use of existing resources.

The Kansas Economic Growth Act of 2004 also established the Kansas Community Entrepreneurship Fund, StartUp Kansas. The mission of StartUp Kansas is to partner with business support providers who assist in providing or obtaining funding for Kansas

entrepreneurs in for-profit business startups and expansions in rural and distressed communities. Entrepreneurs and small business owners who are starting a business or want to start growing their existing business can access StartUp Kansas funding by working with their local non-profit business service providers that are part of NetWork Kansas. It is important to emphasize that StartUp Kansas will not provide capital directly to startup and existing businesses. We will work with other organizations to compliment or supplement them in providing economic resources.

The StartUp Kansas Committee will meet every other month to review applications. We have completed the service description and will announce the availability of the StartUp Kansas fund on March 9. Initial applications will be due on April 15 with the first potential awards no later than May 10.

Finally, the last item outlined in the Kansas Economic Growth Act of 2004 is to inventory all entrepreneurial education currently being offered throughout the state. The Center for Entrepreneurship at Wichita State received a grant from us to perform this task. They have hired an Educational Outreach Director that is in the process of conducting an inventory of the entrepreneurial classes currently being taught in Kansas, including K-12, community college, regent college, credited and non-credited. Once the inventory is completed, those courses can be promoted through our NetWork Kansas call-center and website. In addition, the inventory can help provide a foundation to begin to create a clear vision for entrepreneurial education in Kansas.

In summary, the launch on March 9 will begin an ongoing process of connecting entrepreneurs and small business owners with the education, expertise, and economic resources they need when they need them. If you have any questions, I'd be more than willing to try and answer them now or you can email me at sradley@networkkansas.com or call 316-978-7312. Thank you.

Steve Radley, Director, Kansas Center for Entrepreneurship,
1845 Fairmount, Box 202, Wichita, Kansas 67260-0202



List of Resource Partners

Advanced Manufacturing Institute
Alliance for Technology Commercialization, Inc.
Anderson County Economic Development
Arkansas City Area Chamber of Commerce
Asian American Chamber of Commerce of KC
Atchison Workforce Center
ATHENA PowerLink
Avenue Area, Inc.
Burden Chamber of Commerce and Economic Dev.
Business & Technology Institute
Butler County Economic Development
CANBE: Community Association of Nonprofit Executives
Center for Civic Leadership
Central Exchange
Chanute Workforce Center
City of Abilene
City of Chanute
City of Derby
City of Liberal
City of Maize
City of Parsons
City of Wichita
Citywide Development Corporation of Kansas City, KS
Clay County Economic Development
Cloud County Community College
Cloud County Community College, Geary County
Coffey County Economic Development
Coffey County Economic Development
Coffeyville Community College
Colby Community College
Columbus Economic Development Corp.
Community Resource Network
Council on Philanthropy
County Economic Research Institute, Inc.
Cowley First-Cowley Economic Development
Dodge City Workforce Center
Dodge City/Ford County Development Corporation
Doniphan County Economic Development
Downtown Manhattan, Inc.
Downtown Parsons, Inc.
East Central KS Rural Development Tax Credit
ECI Development Corporation
Edwards County Economic Development Corp.
El Dorado Main Street
Ellis County Coalition for Economic Development
Ellis Mainstreet, Inc.
Ellsworth County Economic Development, Inc.
Emporia Main Street
Emporia Workforce Center
Enterprise Center of Johnson County
Entrepreneurial Development Ctr. at Donnelly College
Entrepreneurial Legal Services at UMKC
Executive Service Corps of Greater Kansas City
FastTrac
Finney County Economic Development Corporation
Fort Scott Area Chamber of Commerce
Fort Scott Community College
Four Rivers Development Inc.-Beloit
Four Rivers Development Inc.-Salina
Fredonia Chamber of Commerce
Garden City Downtown Vision
Garden City Workforce Center
Gardner Area Chamber of Commerce
Glacial Hills RC&D, Inc.
Great Bend Workforce Center
Great Plains Development, Inc.
Greater Kansas City Chamber of Commerce
Greater Miami Economic Development Center
Greater Topeka Chamber of Commerce
Greenwood County Economic Development
Harper County Economic Development Center
Hays Workforce Center
Heartland Business Capital
Heartland Procurement Technical Assistance Center
Higuchi Biosciences Center
Hispanic Chamber of Commerce of Greater KC
Hispanic Economic Development Corporation
Hodgeman County Economic Development
Hoisington Main Street, Inc.
Home Business Connection
Hutchinson Workforce Center
Independence Main Street
Independence Workforce Center
Innovation Center
International Trade Council of Greater Kansas City
InvestMidwest Venture Capital Forum
IRS Small Business Taxpayer Education & Comm.
Johnson County K-State Research and Extension
Johnson County Library
Kansas Bioscience Organization
Kansas City Area Chamber of Commerce
Kansas City Area Life Sciences Institute
Kansas City Kansas Public Library
Kansas City KS Women's Chamber of Commerce
Kansas City Volunteer Lawyers/Accountants for the Arts
Kansas City Workforce Center
Kansas Department of Revenue
Kansas Electric Power Cooperative
Kansas Industrial Training Program
Kansas Insurance Department
Kansas Match
Kansas State University, Pollution Prevention Institute
Kansas Statewide Certification Program, Minority & Women
Kansas Technology Enterprise Corporation
Kansas Women's Business Center
Kansas World Trade Center
KC KS Community College Workforce Development
KC Sourcelink

DOC Office of Minority & Women Business
KDOC, Business Development Division, EC Region
KDOC, Business Development Division, General
KDOC, Business Development Division, NE Region
KDOC, Business Development Division, NW Region
KDOC, Business Development Division, SC Region
KDOC, Business Development Division, SE Region
KDOC, Business Development Division, SW Region
KDOC, Community Development Division
KDOC, First Stop Clearinghouse
KDOC, Trade Development Division, Overland Park
KDOC, Trade Development Division, Topeka
KDOC, Trade Development Division, Wichita
Kearny County Community Development
KSBDC at Cloud County Community College
KSBDC at Emporia State University
KSBDC at Fort Hays State University
KSBDC at Garden City Community College
KSBDC at Johnson County Community College
KSBDC at Pittsburg State University
KSBDC at University of Kansas
KSBDC at Washburn University
KSBDC at Wichita State University
Lawrence Chamber of Commerce
Lawrence Regional Technology Center
Lawrence Workforce Center
Leavenworth Area Development
Leavenworth Workforce Center
Leavenworth-Lansing Area Chamber of Commerce
Leawood Chamber of Commerce
Lenexa Chamber of Commerce
Lenexa Economic Development Council
Liberal Chamber of Commerce
Liberal Workforce Center
Linn County Economic Development
Logan County Development Corporation
Manhattan and Junction City Workforce Center
Manhattan Area Chamber of Commerce
Marshall County Economic Development Council
Marysville Main Street
McPherson Main Street
Mid America Manufacturing Tech. Ctr., Overland Park
Mid America Manufacturing Tech. Ctr., Pittsburg
Mid America Manufacturing Tech. Ctr., Western Kansas
Mid America Manufacturing Tech. Ctr., Wichita
Mid-America Incorporated
Midwest Center for Nonprofit Leadership
Midwest Energy, Inc.
Minority Supplier Council of Kansas City
Mitchell County Community Development
MO-FAST (MO Federal & State Technology)
MO-KAN Development, Inc.
NASA Mid-Continent Technology Transfer Center
National Association of Women Business Owners
National Federation of Independent Business
National Institute for Aviation Research
Neosho County Community College
Ness County Economic Development
Newton Workforce Center
North Central Regional Planning Commission
Northeast Johnson County Chamber of Commerce
Northeast Kansas Enterprise Facilitation Initiative
Oberlin-Decatur Area Economic Development
Olathe Chamber of Commerce
Olathe Economic Development Council
Osborne Economic Development
Ottawa Main Street
Overland Park Chamber of Commerce
Overland Park Economic Development Council

Overland Park Workforce Center
Pawnee Co. Eco. Devo./ Larned Area Chamber
Pioneer County Dev./NW KS Planning & Dev.
Pioneer Electric Cooperative, Inc.
Pittsburg Workforce Center
POWER Mentoring Program
Prairie Enterprise Project
Pratt Area Economic Development Corporation
Q.U.A.D. Enterprise Facilitation
Quest Center for Entrepreneurs, Inc.
Republic County Economic Development
Rooks County Economic Development
Rural Development Association of Northeast KS
Rural Telephone Service Co., Inc.
Salina Workforce Center
SBA Disadvantaged Business Procurement
SBA Economic Development Department
SBA HUBZone Program
SBA Small Business Procurement Program
SBA, Kansas City District Office
SBA, Wichita District Office
SCORE, KC Chapter #19
SCORE, McPherson Chapter #542
SCORE, Topeka Chapter #342
SCORE, Wichita Chapter #143
See-Kan RC&D Project, Inc.
Seward County Community College
Shawnee Area Chamber of Commerce
Shawnee Economic Development Council
Sherman County Economic Development
Smith Center Chamber of Commerce
Smith Center Economic Development
Solomon Valley Regional Entrepreneurial Center
South Central KS Economic Development District
Southeast Kansas Regional Planning Commission
Southeast Kansas, Inc.
Southern Kansas Telephone Co.
Southwest Johnson County Economic Development
Southwest Kansas Technical School
Spring Hill Chamber of Commerce
St. John Main Street Corporation
Stevens County Economic Development
Sumner County Economic Development
Sunflower Electric Power Corporation
Sunflower RC&D Area, Inc.
Sunflower Regional Enterprise Facilitation
Support Kansas City, Inc.
Taxpayer Advocate Service
Topeka Workforce Center
Trego County Economic Development
U.S. General Services Administration
Unified Government of Wyandotte County, Purchasing Division
University of Kansas Center for Research
University of Kansas, Tech. Transfer & Intellectual Property
USDA Rural Development, Area 1
USDA Rural Development, Area 3
Wakarusa Valley Development, Inc.
Western Kansas Business Consulting
Wichita Area Chamber of Commerce
Wichita County Economic Development
Wichita Downtown Development Corporation
Wichita Independent Business Association
Wichita Technology Corporation
Winfield Area Chamber of Commerce
Workforce Alliance of South Central Kansas



The Kansas Center for Entrepreneurship was established as a component of the Kansas Economic Growth Act of 2004 to further establish entrepreneurship and small business as a priority for economic and community development in the state of Kansas. Its mission is to promote an entrepreneurial environment throughout the state of Kansas by establishing a central portal that connects entrepreneurs and small business owners with the right resource; expertise, education, and/or economic, at the right time.

Expertise - NetWork Kansas

NetWork Kansas is a statewide service that enables entrepreneurs and small business owners to be connected with the resources they need when they need them! Currently, there are more than 240 NetWork Kansas partners that provide business building services to entrepreneurs and small business owners. Network Kansas works by providing a conduit that bridges the entrepreneur and small business owner with the resource that has the expertise they need. Entrepreneurs and small business owners call 877-521-8600 to speak with a NetWork Kansas Counselor. NetWork Kansas' unique database enables counselors to view the entire network of resource partners and their area of expertise. The NetWork Kansas counselor researches the network with the entrepreneur's needs in mind and refers the entrepreneur to the partners that meet their particular needs. NetWork Kansas also tracks the success of the entrepreneur throughout the process by utilizing a software program called Biz-Trakker developed by the Kaufman Foundation and KCSOURCELINK of Kansas City.

Education - Entrepreneurial Education

The Kansas Center for Entrepreneurship has awarded a grant to the Center for Entrepreneurship at Wichita State University. The purpose of this grant is to perform an inventory of the entrepreneurial education currently being taught throughout the state. The inventory includes non credited and credited courses offered by K-12 schools, community colleges, private colleges, and regents colleges. The goal of this inventory process is to learn what is already available that can be promoted through NetWork Kansas and to determine a vision and mission for entrepreneurial education for the state of Kansas.

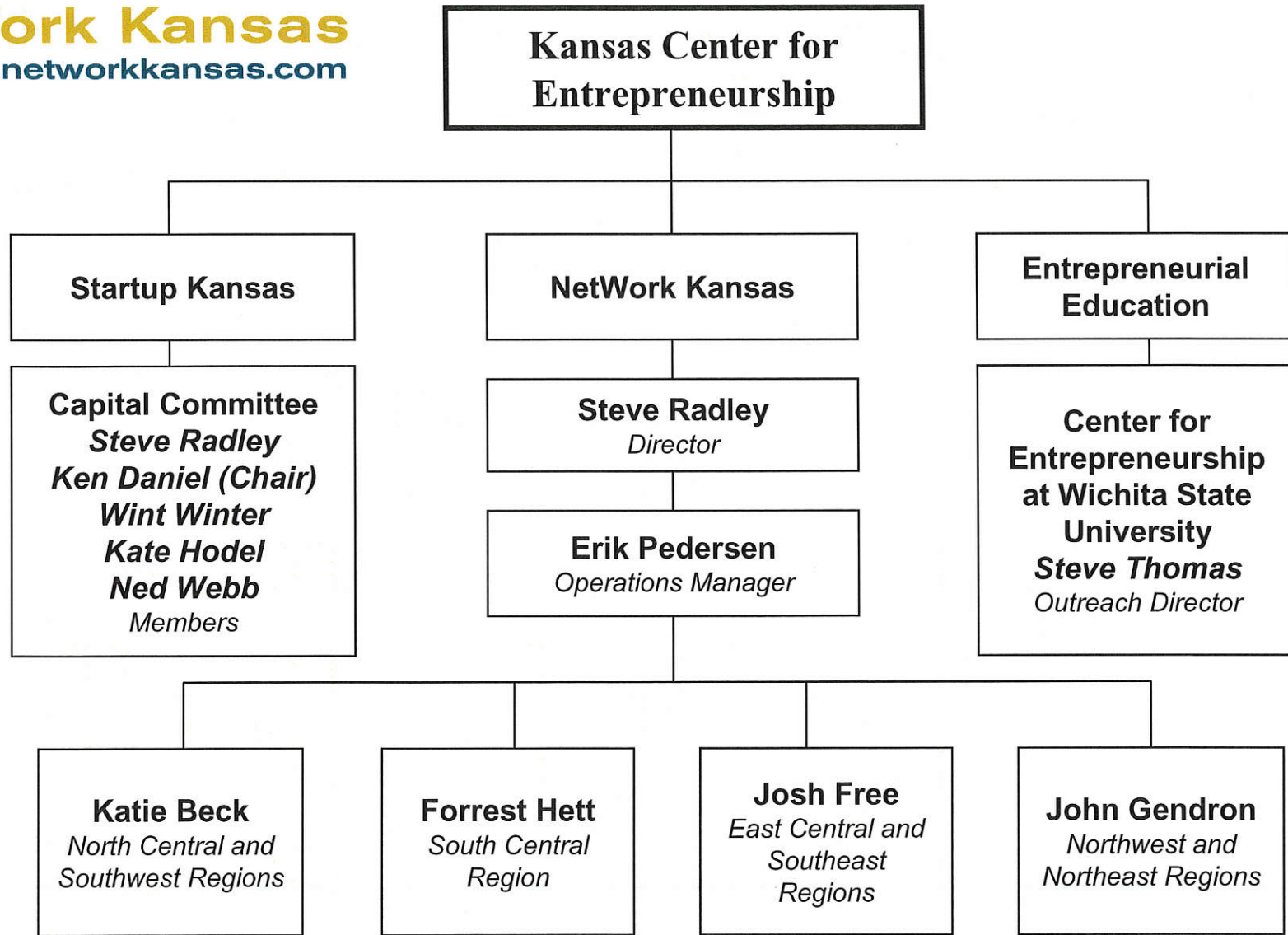
Economic Resources – StartUp Kansas

The mission of StartUp Kansas is to partner with business support providers in providing or obtaining seed capital funding for Kansas entrepreneurs in for-profit business startups and expansions in rural and distressed communities. Through its Kansas Community Entrepreneurship Fund, entrepreneurs can access StartUp Kansas funding by working with their local non-profit business support providers. Examples are the seven regional foundations: Northwest Kansas Planning and Development Commission, North Central Kansas Community Network Co., Glacial Hills Resource Conservation and Development Region, Inc., East Central Kansas Rural Development Tax Credit Program, Inc., Southeast Kansas, Inc., South Central Kansas Economic Development District, and Great Plains Development, Inc. Other examples of non-profit business support providers include Main Street Kansas organizations, Chambers of Commerce, Economic Development agencies and other non-profit organizations charged with assisting for-profit entrepreneurs and small businesses in Kansas.

CONTACT INFORMATION

Steve Radley, Director
Phone: 316-978-7312
Fax: 316-978-7311
Email: sradley@fhsu.edu

Erik Pedersen, Operations Manager
Phone: 316-978-7310
Fax: 316-978-7311
Email: epedersen@fhsu.edu





2-8

