

**MINUTES**

MAR 17 2006

**KANSAS CAPITOL RESTORATION COMMISSION**

December 19, 2005  
Room 123-S—Statehouse

**Members Present**

Senator Steve Morris, Chairman  
Representative Doug Mays, Vice Chairman  
Senator Greta Goodwin  
Senator Anthony Hensley  
Senator Derek Schmidt  
Senator Dwayne Umbarger  
Representative Clay Aurand  
Representative Bill Feuerborn  
Representative Joe Humerickhouse  
Representative Melvin Neufeld

**Members Absent**

Senator Jim Barone  
Representative Ray Merrick  
Lynn Jenkins, State Treasurer  
Duane Goossen, Secretary, Department of Administration

**Staff**

Barry Greis, Statehouse Architect  
Jeff Russell, Director, Legislative Administrative Services  
D. Keith Meyers, Director, Division of Facilities Management, Department of Administration  
Jennie Chinn, Executive Director, State Historical Society  
Alan Conroy, Director, Kansas Legislative Research Department  
Raney Gilliland, Assistant Director for Research, Kansas Legislative Research Department  
Mary Galligan, Assistant Director for Information Technology, Kansas Legislative Research Department  
J. G. Scott, Chief Fiscal Analyst, Kansas Legislative Research Department  
Julian Efird, Kansas Legislative Research Department

**Conferees**

Barry Greis, AIA, Statehouse Architect  
William Seale, Project Historian  
Mike Treanor, AIA, Treanor Architects, P.A.  
Vance Kelley, Treanor Architects, P.A.  
Dirk Shaffer, Senior Vice-President, J. E. Dunn Construction

Chairman Steve Morris called the meeting to order at 10:05 a.m. and welcomed everyone to the meeting. Prior to the meeting, a tour of the East Wing of the Statehouse was conducted.

The Chairman welcomed Barry Greis, AIA, Statehouse Architect, who presented an overview of the agenda and introduced the Project Staff (Attachment 1). Mr. Greis introduced William Seale, who provided an historical perspective of the Statehouse. He noted that construction was begun on the Statehouse after the Civil War. The Design Committee selected the year 1917 as the year of restoration for the entire building. Mr. Seale explained that the year 1917 is appropriate because it marked the end of World War I and the end of this type of Capitol building being built in the United States. There never was to be any more like the Kansas Statehouse built and it is one of the oldest of its type in use today.

Chairman Morris welcomed Mike Treanor, AIA, Treanor Architects, P.A., who presented the architectural report. Mr. Treanor reviewed the design objectives. He noted that upon completion of the construction, approximately 110,000 square feet of floor area will be added. Mr. Treanor explained that the north entrance will be the staging area until the construction is completed. It will also house the Visitors' Center. The Revisors' area will be completed during the 2006 Legislative Session, but their offices will not move until after the Session.

Chairman Morris welcomed Vance Kelley, also with Treanor Architects, who reviewed the lessons that were learned during construction in the East Wing. He noted the Statehouse was built over a 30-year period:

- East Wing (1869);
- West Wing (1881); and
- North, South, Rotunda (1903).

Constructive investigation was done to try to prepare for the unexpected. He explained what was found and what needed to be done (see Attachment 1).

The Chairman welcomed Dirk Shafer, Senior Vice President, J. E. Dunn Construction, who gave the construction report. Mr. Shafer provided details regarding the East Wing, an Inflation Update, and the West Wing Final Estimate. He noted that there was some concern that they had with the time frames, and the challenges and surprises regarding conditions under which they had to complete their work. Mr. Shafer noted that heavy equipment and significant muscle had to be used in the basement of the East Wing. Mr. Shafer stated that some concerns that they had a year ago were the budget, some estimates, inflation, and a couple of the J. E. Dunn team members who had not performed at a level that was appropriate. It was noted that double-digit inflation during the past six months; the recent impact of the hurricanes, with a significant number of the workforce and material going to the Gulf states; and the increases in gas prices are having an inflationary impact.

Chairman Morris thanked everyone for getting construction to this point. He noted that the East Wing looks nice and he is looking forward to 10/10/2010, the end of the project.

In response to a question by Representative Feuerborn regarding the tunnel not being open by the 2006 Legislative Session, Mr. Greis explained that the West Wing currently is under construction and that materials will be moved up from the ground level on a conveyor belt through the skylights to a staging area on the first floor. In addition, Mr. Greis stated that the tunnel is not suitable for people moving through it. He stated that the tunnel would need to be sprinkled to install fire walls and it would end the construction work currently taking place.

Mr. Greis addressed the budget overview and the request for Commission action. He explained that the Capitol Restoration Commission in its Executive Summary of the Master Plan in 2000 acknowledged that its \$120,000,000 budget estimate was subject to change because of "many unknowns." Mr Greis mentioned that the Capitol Restoration Commission recommends approval of the following items to the Legislative Coordinating Council:

- FY 2007 Budget Request to issue additional bonds of \$16,227,091, plus all amounts required for costs of bond issuance, costs of interest, and required reserves;
- Revised 2005 Total Project Budget with Visitors' Center, \$162,227,091, from the current approved project total of \$135,000,000; and
- Capitol Restoration Commission Presentation and Report dated December 19, 2005.

Mr. Greis explained that they moved out the completion year to April of the year 2011 due to loss of five months because of the length of the legislative sessions.

Representative Doug Mays moved, with a second by Senator Derek Schmidt, to approve the following items:

- *The Capitol Restoration Commission recommends the Governor's FY 2007 Budget for the Department of Administration include \$16,227,091.00 additional bonding authority or direct appropriation for Capitol restoration.*
- *That the Capitol restoration project budget, including the Visitors' Center, be \$162,227,091.00.*
- *That the Capitol Restoration Commission presentation and report dated December 19, 2005 be accepted.*

The motion carried.

Senator Umbarger explained that he had received a telephone call from Senator Jim Barone, who was unable to attend the meeting, and wanted to express his concern regarding inflation affecting costs and to express his concern regarding the delay of legislative office space during the 2006 Legislative Session.

Chairman Morris thanked everyone for attending the meeting. The meeting adjourned at 11:20 a.m.

Prepared by Raney Gilliland

Approved by Commission on:

January 27, 2006

(date)

**KANSAS CAPITOL RESTORATION COMMISSION  
GUEST LIST**

DATE: December 19, 2005

NAME	REPRESENTING
Debra Renick	Teanor Architects
JAW ROWE	"
DARIN STEGEMOLLER	JE DUNN
<del>Robert Husley</del>	Anna Treanor
D. KEITH MEYERS	DEPT. OF ADMINISTRATION - DFM
LANK WRASL	OJA
MARK BOZANYAK	<del>John Peters</del>
Terry Marmet	Ks State Historical Society
Gino Terlizzi	LJW
BRETT HARSH	JE DUNN
Scott Rivott	JE DUNN
Chris Long	Dept of Administration
John Peters	Capital Strategies

# KANSAS STATEHOUSE

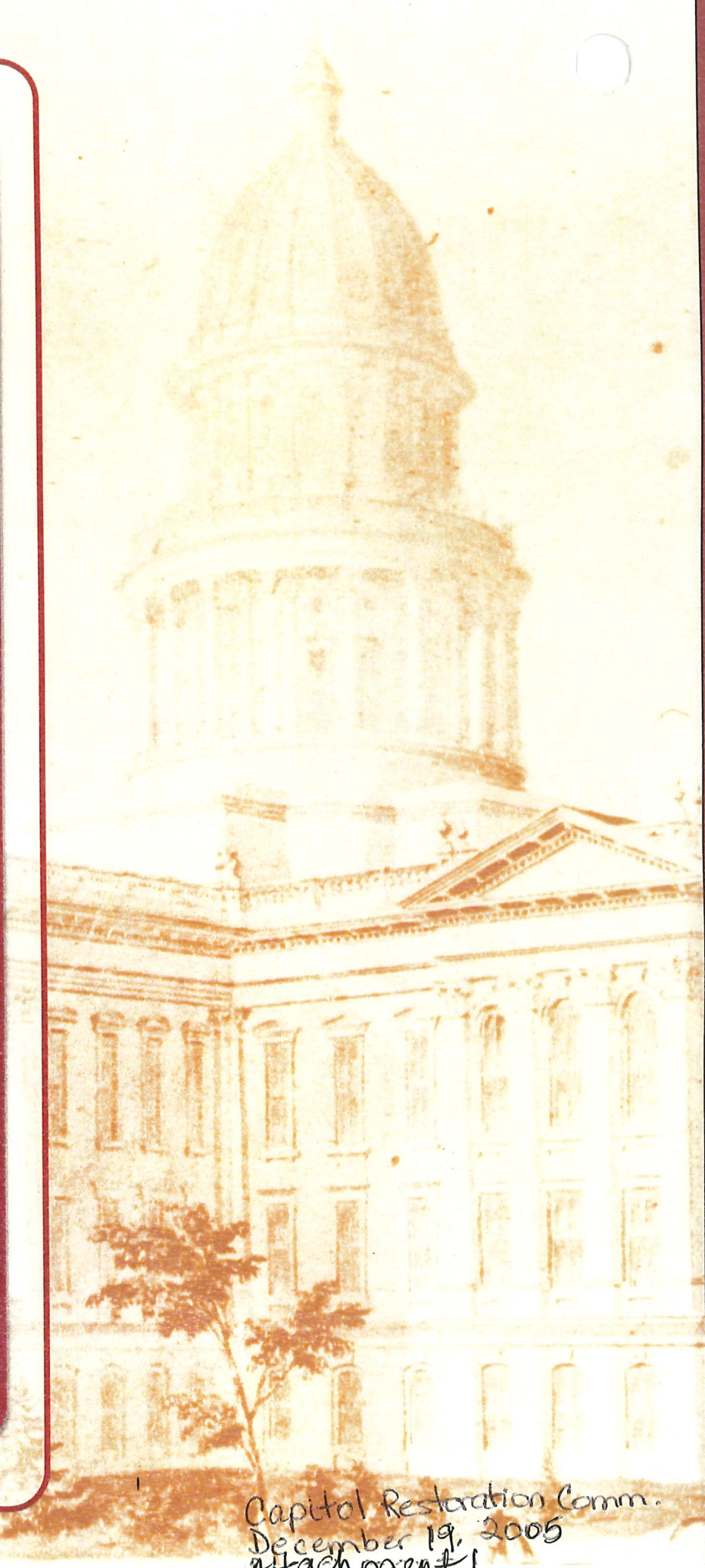
PRESERVATION & RESTORATION



## CAPITOL RESTORATION COMMISSION PRESENTATION

**LEGISLATIVE  
COORDINATING  
COUNCIL**

December 19, 2005



Capitol Restoration Comm.  
December 19, 2005  
Attachment 1

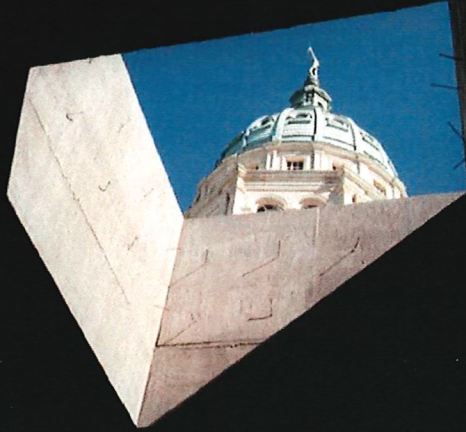
## AGENDA

Capitol Restoration Commission  
Room 123 South, Statehouse  
10:00 A.M., December 19, 2005

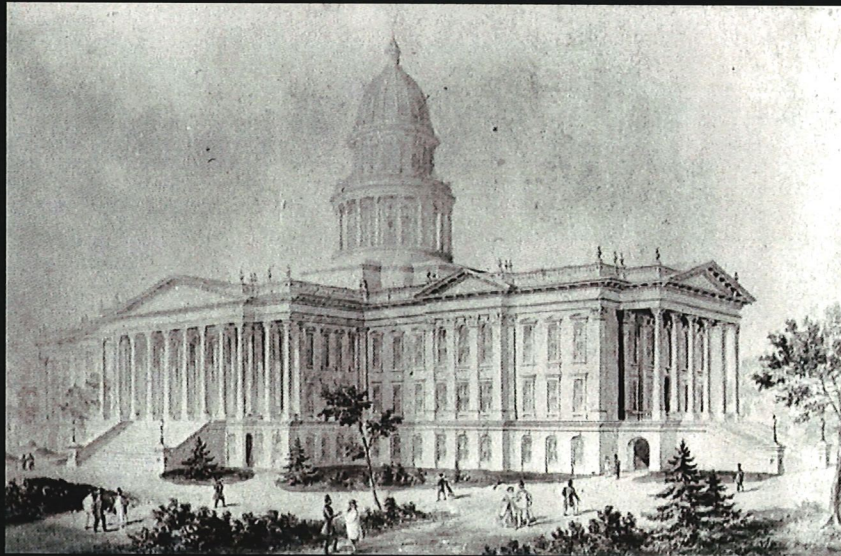
- |      |  |       |
|------|--|-------|
| I.   | Agenda Overview                                  | Tab A |
| II.  | Design & Construction Update                     | Tab B |
| III. | Project Timeline, Project Budget & Scope of Work | Tab C |
| IV.  | Construction Sequencing of Work                  | Tab D |
| V.   | Floor Plans, Updated 17 November 2004            | Tab E |
|      | <b>Appendix</b>                                  |       |
|      | Project Roles & Responsibilities                 | Tab F |

*Looking Toward The Future.....*

*Kansas Statehouse Preservation and Restoration  
Capitol Restoration Commission Presentation*

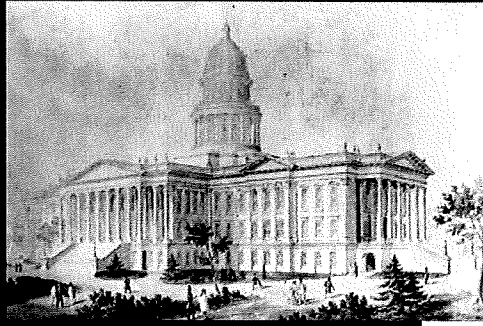


*Design Update*

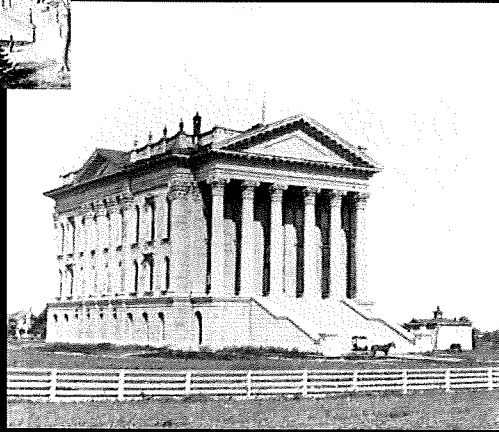


*Historic Rendering*

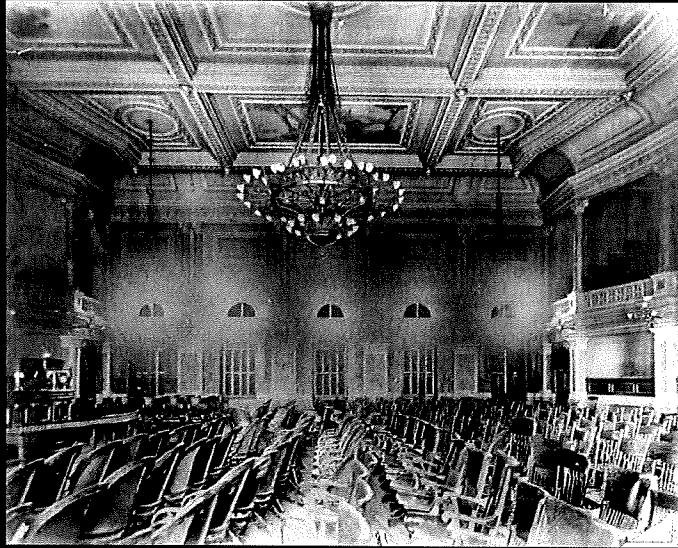




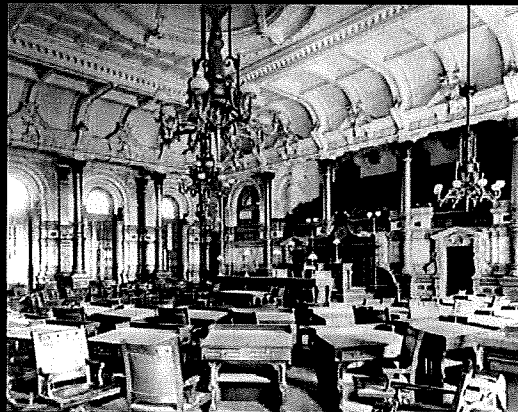
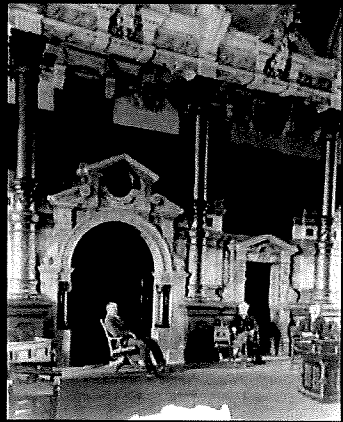
*East Wing*



*West Wing Construction*



*Historic House Chamber*



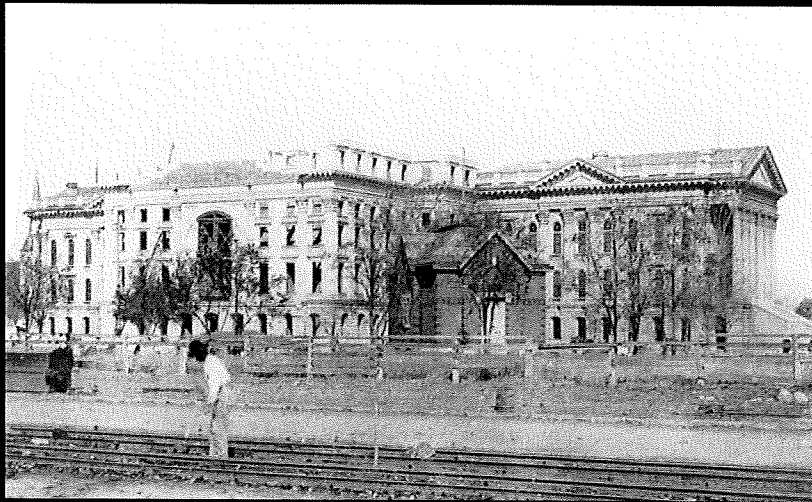
*Historic Senate Chamber*



*North & South Wing Construction Begins*



*North & South Wing Construction Begins*



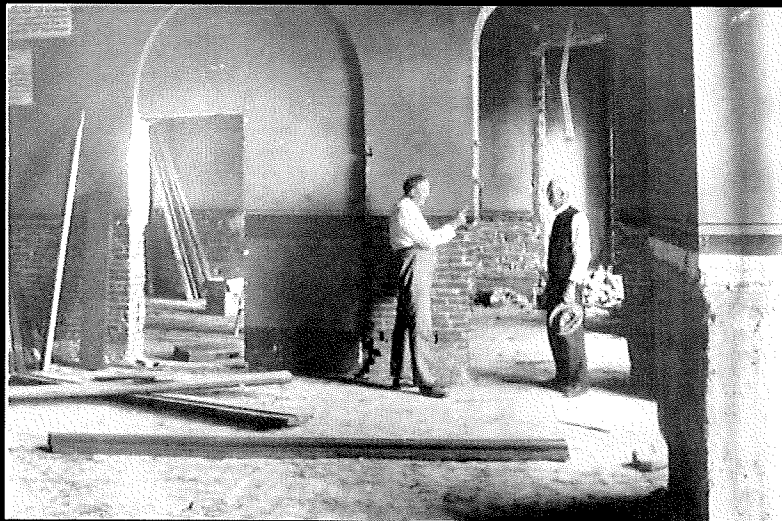
*View of South Wing Under Construction*



*Dome Under Construction*



*Dome Completed*



*East Wing Renovated*



*Kansas Statehouse*



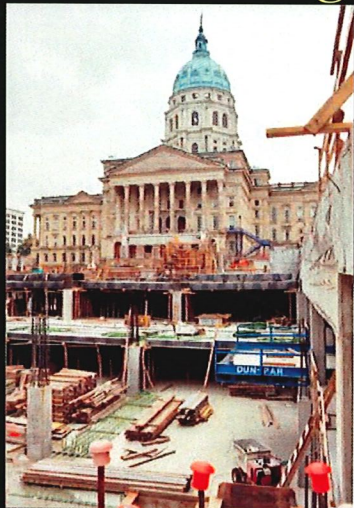
*Kansas Statehouse*

## *Design Objectives*



- *Address "front door"*
- *Add usable floor area*
- *Preserve and restore historic features*
- *Modernize utilities*
- *Address parking*

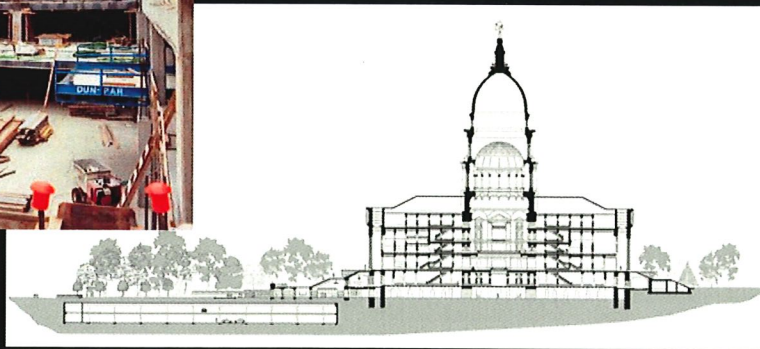
## *Parking Garage Addition*



*Parking Garage  
Under Construction*

### *Building Section*

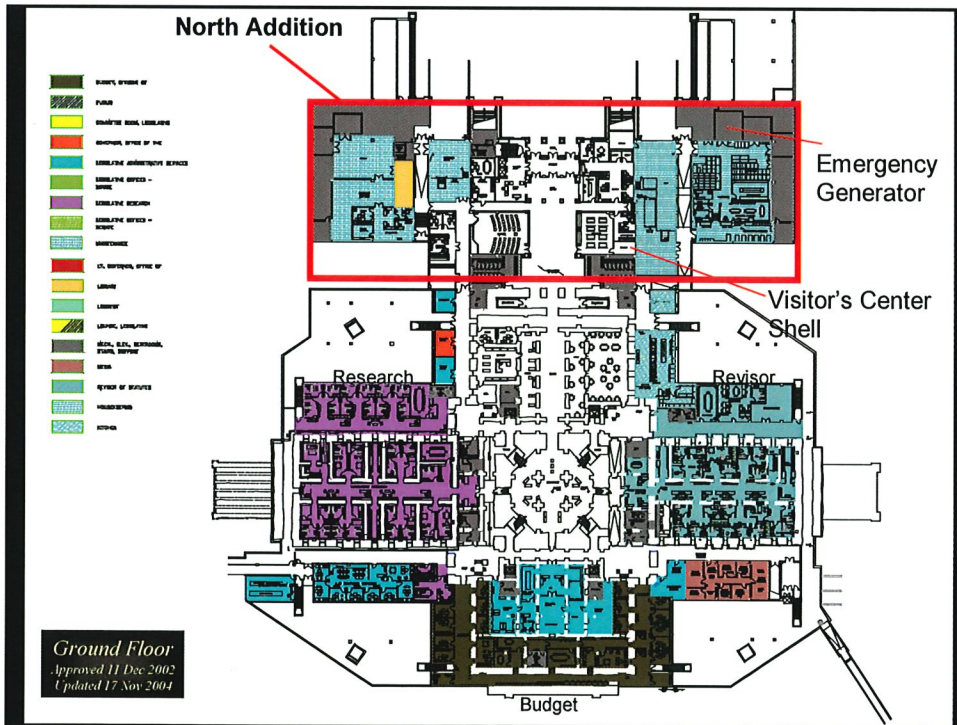
*Plan As Approved  
11 Dec 2002*



# Parking Garage Addition

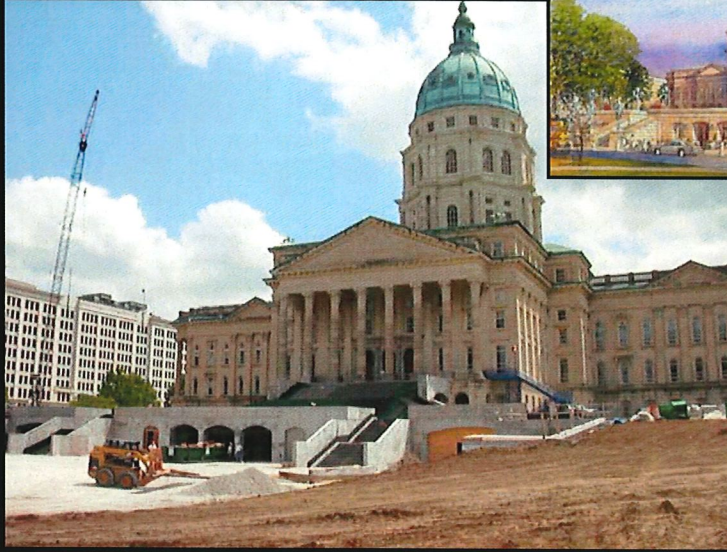


Entry Vestibule





*View from the North -  
New Visitor's Entrance*



*Visitor Center – Shell Space*



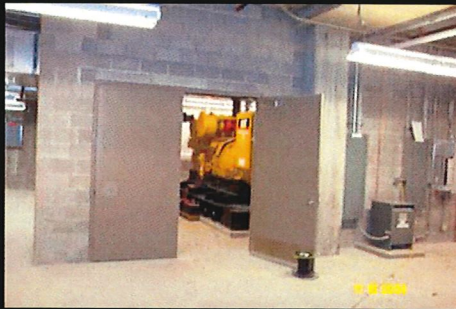
## *Visitor Center Entrance to North Wing*



*New Arched  
Openings*



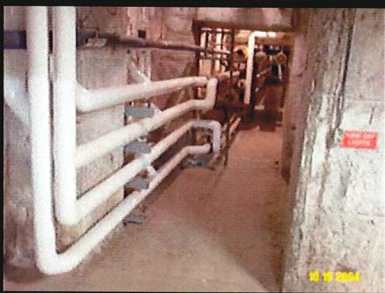
## *Emergency Generator*



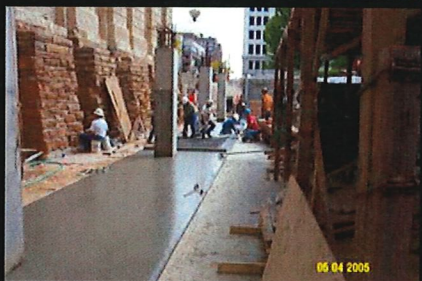
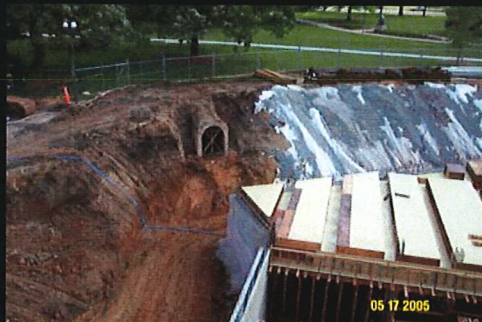
*Pulled Forward  
In Construction Sequence*



## *Former Infrastructure*



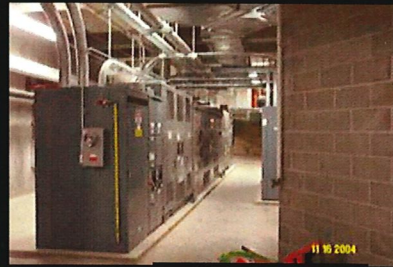
## *South Mechanical Vaults*



## *North Mechanical Vaults*



*Interior  
View*



*New Electrical Service  
Northwest Vault*



*New Fire Pump  
Northeast Vault*

## *New Air Handling Unit and Pump Package*



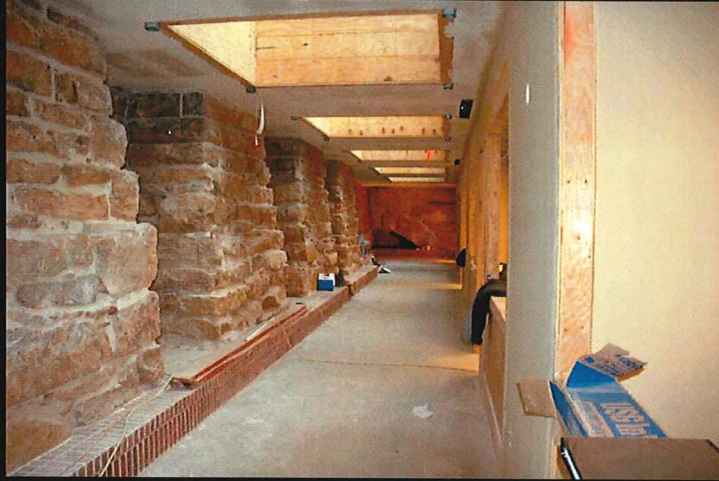




*Ground Level Corridor with Skylights*



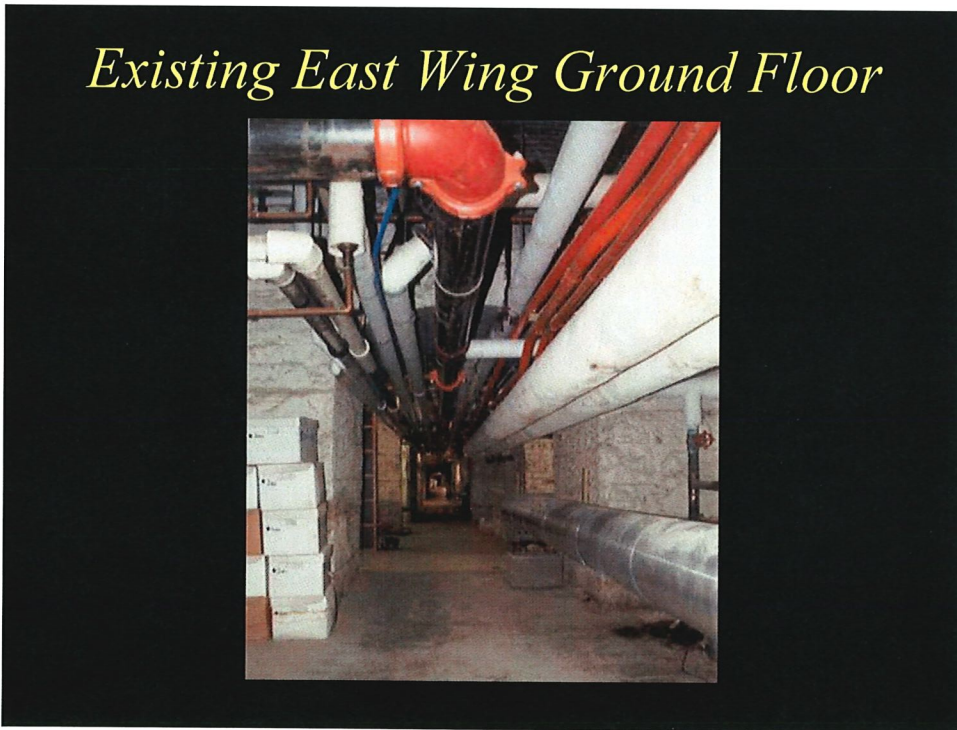
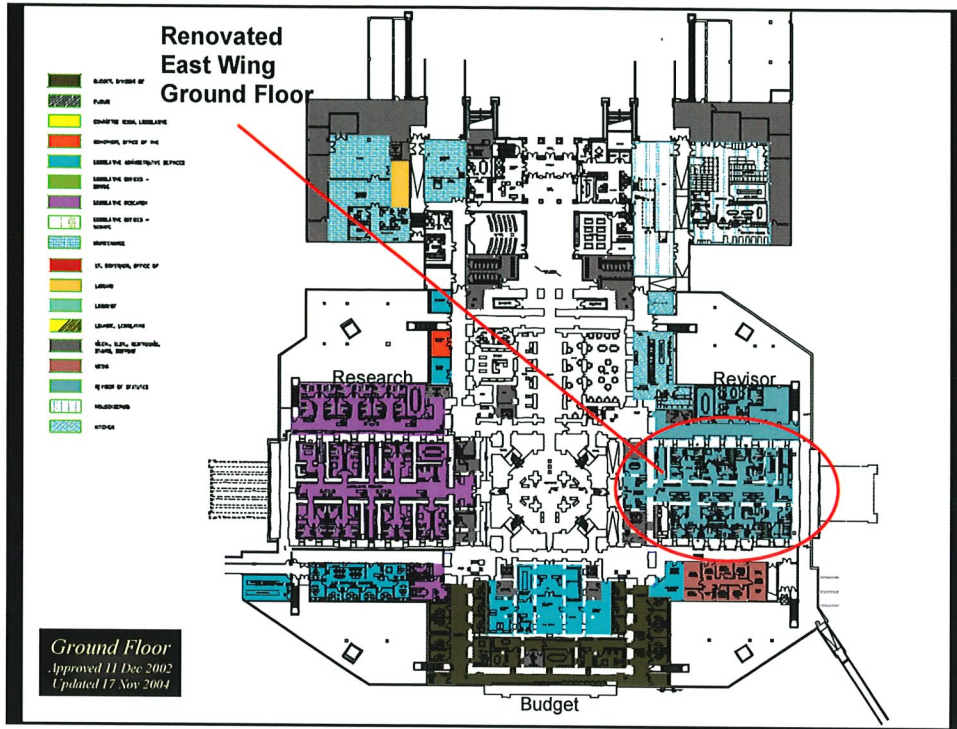
*Ground Level Corridor with Skylights*



*Ground Level Corridor with Skylights*







## *East Wing Ground Floor*

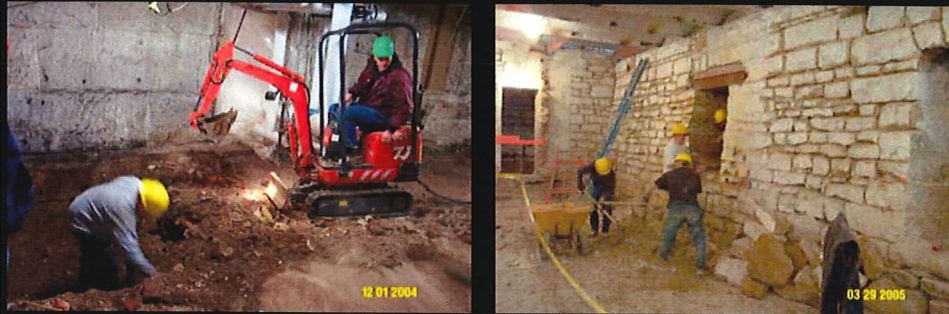


*New Ground Floor Finishes*

## *Ground Floor Renovation*



## *Ground Floor Renovation*

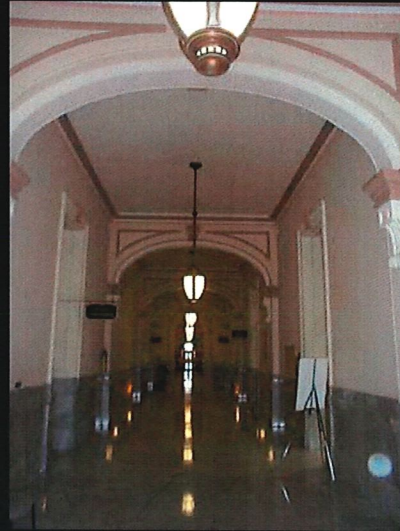


## *Ground Floor Offices - Progress*

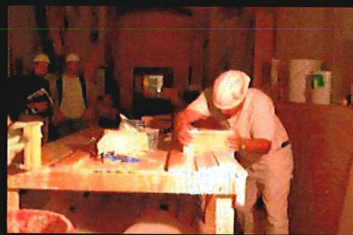




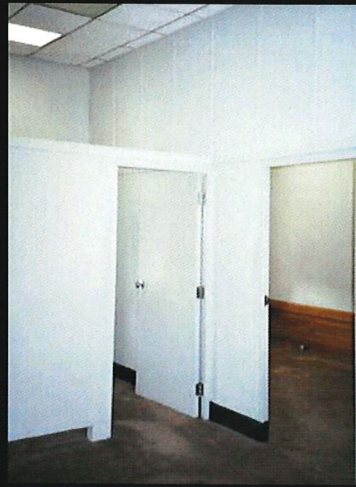
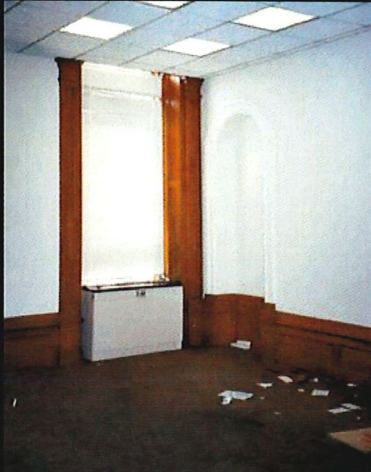
*Former Corridor – First / Second Floor*



*First / Second Floor Restoration*



*Former East Wing Offices*

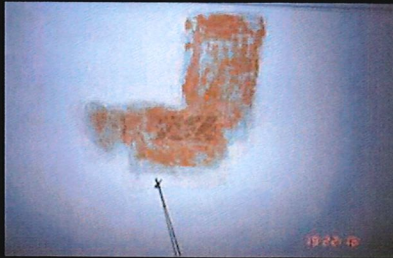


*East Wing Offices*



*New Light Introduced to Interior Offices*

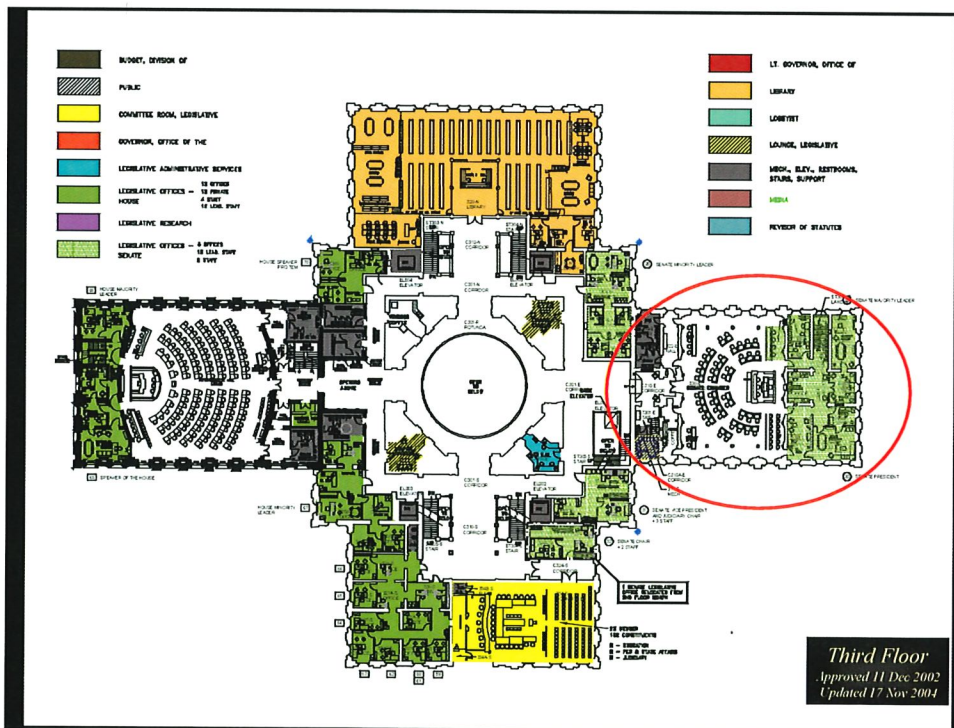
## *East Wing Office Restoration*



## *East Wing Office Restoration*



# East Wing Office Restoration





*Photo of Historic Senate Chamber*



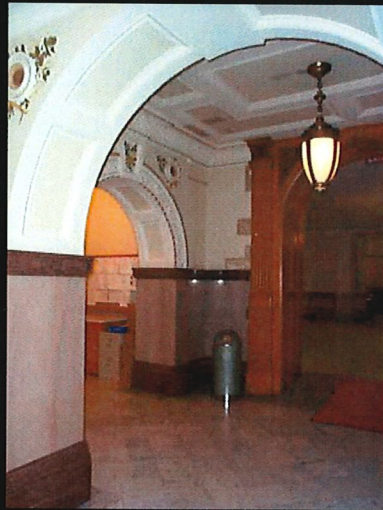
*Historic Senate Chamber*



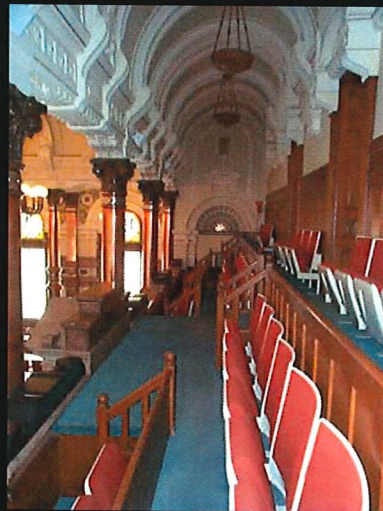
*Former Senate Chamber*



*Former Senate Chamber*



Senate Chamber Vestibule

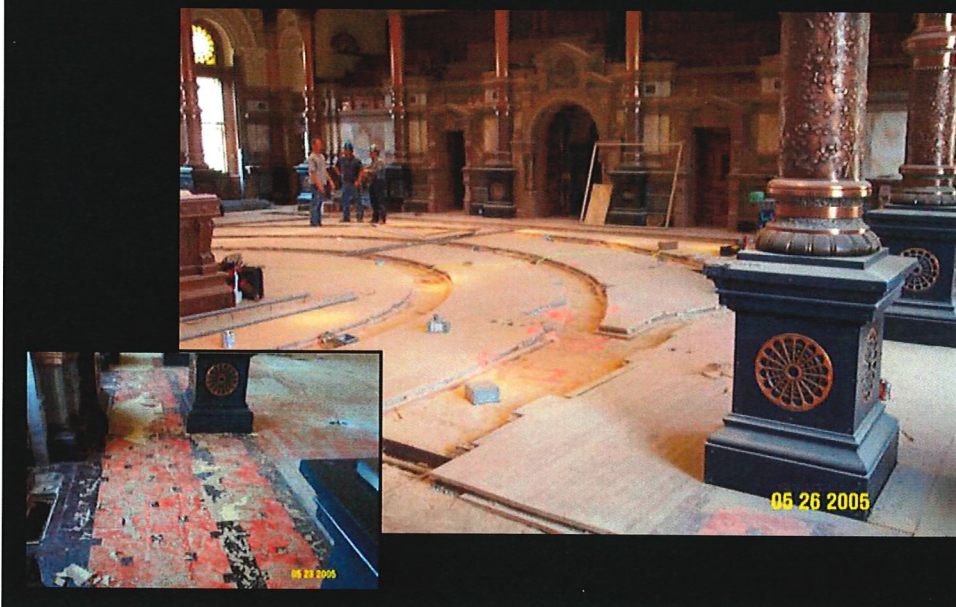


Senate Chamber Gallery

## *Senate Chamber Restoration*



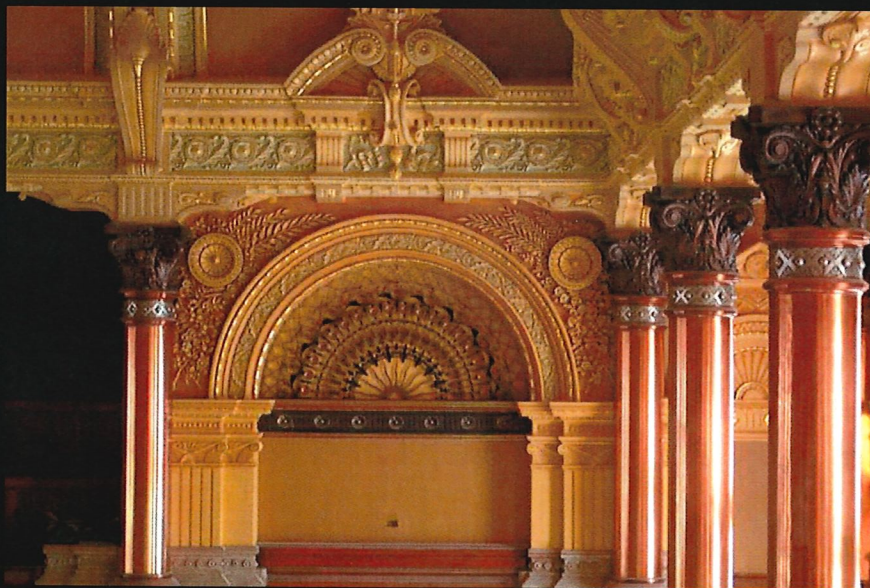
## *Senate Chamber Restoration*



*Senate Chamber Restoration*



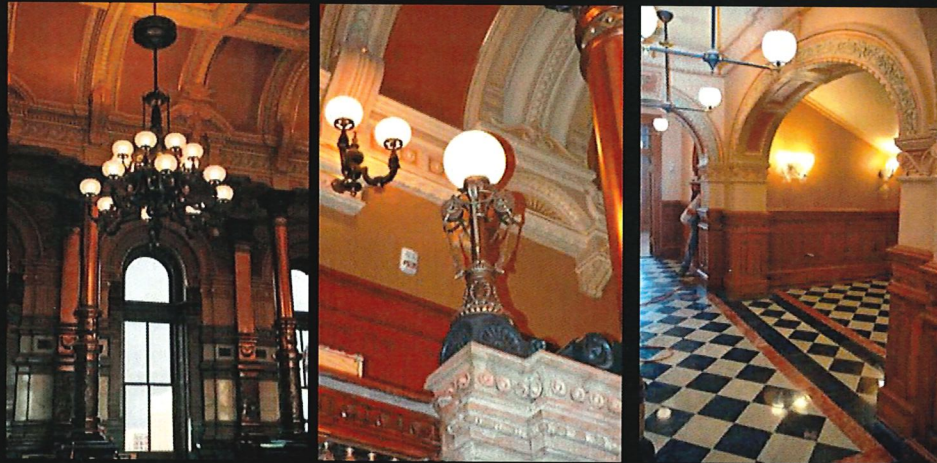
*Senate Chamber Restoration*



*Senate Chamber Restoration*



*Senate Chamber Restoration*



## *Senate Chamber Restoration*



## *Lessons Learned*



*Phased Construction:  
1869 (east); 1881 (west); 1903 (north, south rotunda)*

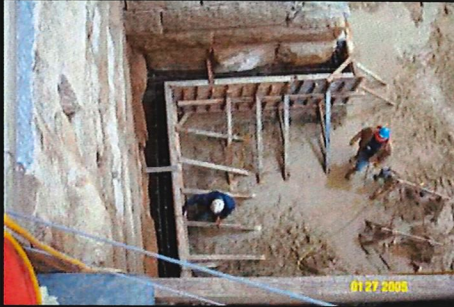
## *Enlarged Foundation*



## *Shallow Foundation*



## *Shallow Foundation*

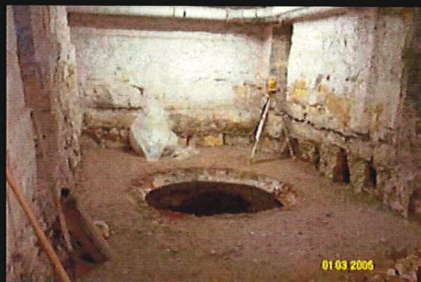


## *Foundation Construction*

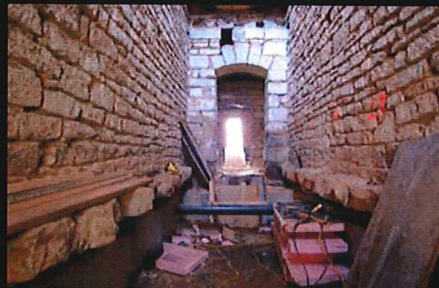
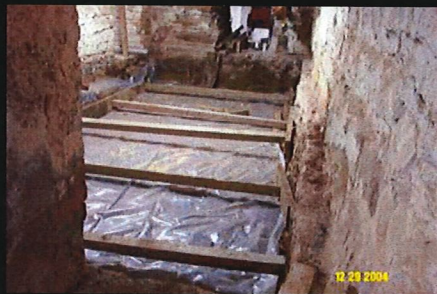




## *Discovery of Interior Cistern*



## *Shallow Interior Foundation*



## *Shallow Sanitary Sewer*



## *Flat Buttress Arch*



## *Deteriorated Stone Foundation*



## *Interior Masonry Construction*



## *Interior Steel Beam Bearing*



## *Plaster Restoration*

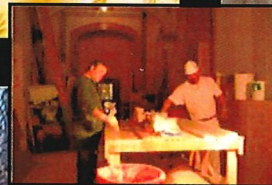


## *Construction Update*

- East Wing
- Inflation Update
- West Wing Final Estimate

## *East Wing Review*

- Challenges
  - Successes
- Muscle
  - Finesse
- Concern
  - Confidence
- Teamwork



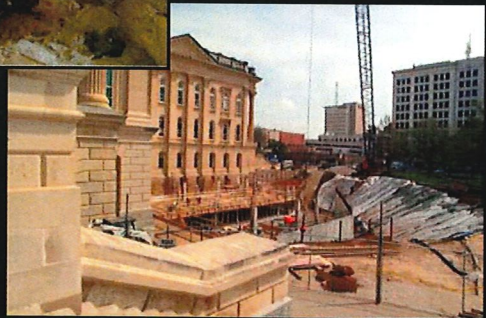
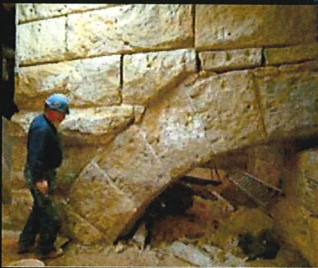
## *East Wing Review*

- Challenges
  - Successes
- Muscle
  - Finesse
- Concern
  - Confidence
- Teamwork



## *East Wing Review*

- Challenges
  - Successes
- Muscle
  - Finesse
- Concern
  - Confidence
- Teamwork



## *East Wing Review*

- Challenges
  - Successes
- Muscle
  - Finesse
- Concern
  - Confidence
- Teamwork



## *East Wing Review*

- Challenges
  - Successes
- Muscle
  - Finesse
- Concern
  - Confidence
- Teamwork



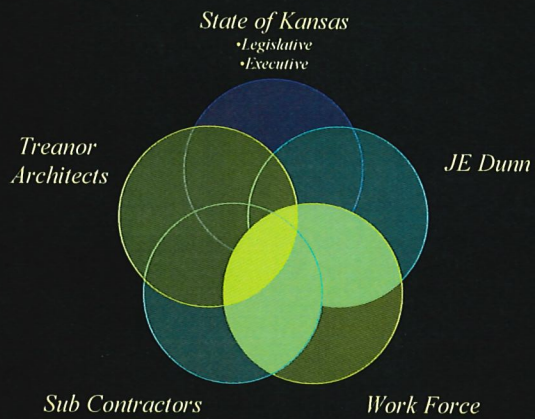
## *East Wing Review*

- Challenges
  - Successes
- Muscle
  - Finesse
- Concern
  - Confidence
- Teamwork



## *East Wing Review*

- Challenges
  - Successes
- Muscle
  - Finesse
- Concern
  - Confidence
- Teamwork

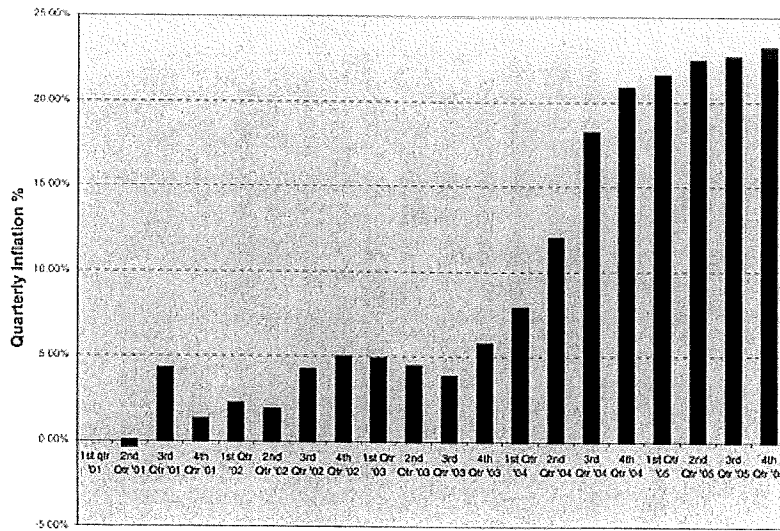




# *Inflation Update*

- Footnote 1
  - Budgets assumed 3% / Year
  - East Wing relatively unaffected
- West Wing Impacted
  - \* Recent Impact of Hurricanes and Gas Prices

*ENR Kansas City BCI*



## *Inflation Update*

- Footnote 1
  - Budgets assumed 3% / Year
  - East Wing relatively unaffected
- West Wing Impacted
- Recent Impact of Hurricanes and Gas Prices

## *West Wing Final Estimates*

- 100% Construction Documents
- 100% Bid to Sub-Contractors
- Increased Owner Contingency
- Established Allowances
- Approval will Allow Us to “Lock-in” Pricing

**Capitol Restoration Commission  
Executive Summary  
April 2000**

Capitol Restoration Master Plan

The Capitol Restoration Commission in their Executive Summary of the Restoration Master Plan acknowledged that their \$ 120,000,000 budget estimate is subject to change because of "many unknowns."

**"As time progresses their [CRC] numbers will become more refined by the project team."**

**Historic Budget Estimates  
June 2000**

Estimating Group	Core Building		Parking Garage		Project Cost
Capitol Restoration Commission	\$120,000,000	+	\$15,000,000	=	\$135,000,000
Treanor Architects, P.A.	138,100,000	+	15,000,000	=	153,100,000
Project Manager	153,600,000	+	15,000,000	=	168,600,000

**FY 2007 BUDGET REQUEST**

West Wing Restoration	\$12,929,183
Relocate Temporary Offices from West Wing to North Wing and in Phase IV from South Wing to North Wing.	353,000
Selective Demolition in South Wing	395,000
East Wing Costs	2,449,908
East Wing Plaster Repairs	100,000
<b>FY 2007 BUDGET REQUEST</b>	<b>\$16,227,091</b>

**Capitol Restoration Commission  
December 2005 Proposed Project Budget**

Phase I		Core Building Infrastructure and	\$39,995,099
		Parking Garage	14,996,665
Phase II		East Wing Restoration	22,349,425
Phase III		West Wing Restoration	40,200,742
Phase IV		South Wing / North Wing / Rotunda and	33,685,160
		Visitor Center	11,000,000
		<b>December 2005 Proposed Project Budget</b>	<b>\$162,227,091</b>

**ACTION ITEMS**




Capitol Restoration Commission recommends approval of the following items to the Legislative Coordinating Council.

- a. FY 2007 Budget Request \$16,227,091  
plus all amounts required for costs of bond issuance,  
costs of interest and required reserves.
- b. Proposed 2005 Project Budget with Visitor Center \$162,227,091
- c. Capitol Restoration Commission Presentation and Report  
dated December 19, 2005.

Financial Budget Reporting Period:		Through October 31, 2005			
<b>CAPITOL RESTORATION QUARTERLY REPORT [1]</b>					
Deliverable		Funding Phase	Budget	Expenditure	Balance
<b>A Primary Infrastructure</b>					
1	Vault Construction				
	a NW Vault	1	3,439,236	3,417,926	21,310
	b NE Vault	1	2,641,360	2,510,351	131,009
	c SE Vault	1	3,710,835	3,441,132	269,703
	d SW Vault	1	3,741,116	2,826,415	914,701
2	MEP for Vaults				
	a NW Vault	1,3	1,993,744	1,237,347	756,397
	b NE Vault	2	1,513,108	1,237,512	275,596
	c SE Vault	2	2,618,650	0	2,618,650
	d SW Vault	2,3	1,623,617	0	1,623,617
3	Primary Services	1,2,3	5,720,658	5,473,138	247,520
4	Architects / Consultants	1,2,3,4	5,528,332	5,402,996	125,336
5	Construction Manager	1,2,3	1,007,418	703,450	303,968
	<b>TOTAL</b>		<b>33,538,074</b>	<b>26,250,267</b>	<b>7,287,807</b>
<b>B Visitor Center</b>					
1	Shell	1	4,406,632	4,398,193	8,439
2	Completion	1,3,4	5,051,763	614,194	4,437,569
3	Architects / Consultants	1,2,3,4	1,418,021	1,000,976	417,045
4	Construction Manager	1,3,4	335,919	165,417	170,502
	<b>TOTAL</b>		<b>11,212,335</b>	<b>6,178,781</b>	<b>5,033,554</b>
<b>C Parking Garage</b>					
1	Construction	1	12,941,232	13,092,325	(151,093)
2	Architects / Consultants	1	1,570,220	1,608,558	(38,338)
3	Construction Manager	1	485,213	478,059	7,154
	<b>TOTAL</b>		<b>14,996,665</b>	<b>15,178,943</b>	<b>(182,278)</b>
<b>D East Wing</b>					
1	Interior floors	1,2	12,313,247	7,767,008	4,546,239
2	Basement	1	1,550,164	1,558,288	(8,124)
3	Exterior / Roof	1,2	2,884,979	243,151	2,641,828
4	Secondary Infrastructure	2	233,482	0	233,482
5	Furnishings	2	750,000	0	750,000
6	Architects / Consultants	1,2,3	5,345,975	3,756,168	1,589,807
7	Construction Manager	1,2	581,793	348,099	233,694
8	Temporary Space	1	289,157	273,420	15,737
	<b>TOTAL</b>		<b>23,948,797</b>	<b>13,946,134</b>	<b>10,002,663</b>
Footnote [1]: reference for inflation rate reporting.					

Financial Budget Reporting Period: Through October 31, 2005

**CAPITOL RESTORATION QUARTERLY REPORT [1]**

Deliverable	Funding Phase	Budget	Expenditure	Balance
<b>E West Wing</b>				
1 Interior floors	2,3	19,657,812	0	19,657,812
2 Basement	3	3,290,138	0	3,290,138
3 Exterior / Roof	3	1,964,253	0	1,964,253
4 Secondary Infrastructure	3	1,867,735	0	1,867,735
5 Furnishings	3	750,000	0	750,000
6 Architects / Consultants	1,2,3,4	6,555,317	2,103,619	4,451,698
7 Construction Manager	2,3	1,258,012	0	1,258,012
8 Temporary Space	1,2,3	340,241	0	340,241
<b>TOTAL</b>		<b>35,683,508</b>	<b>2,103,619</b>	<b>33,579,889</b>
<b>F South Wing / Rotunda</b>				
1 Interior floors	4	8,622,935	0	8,622,935
2 Basement	4	2,158,407	0	2,158,407
3 Exterior / Roof	4	1,156,627	0	1,156,627
4 Secondary Infrastructure	4	0	0	0
5 Furnishings	4	750,000	0	750,000
6 Architects / Consultants	1,2,3,4	2,872,312	429,909	2,442,403
7 Construction Manager	4	479,894	0	479,894
8 Temporary Space	2,3,4	0	0	0
<b>TOTAL</b>		<b>16,040,175</b>	<b>429,909</b>	<b>15,610,266</b>
<b>G North Wing / Rotunda</b>				
1 Interior floors	4	8,517,575	0	8,517,575
2 Basement	4	2,158,407	0	2,158,407
3 Exterior / Roof	4	1,156,627	0	1,156,627
4 Secondary Infrastructure	4	0	0	0
5 Furnishings	4	750,000	0	750,000
6 Architects / Consultants	1,2,3,4	2,748,985	546,903	2,202,082
7 Construction Manager	4	475,943	0	475,943
8 Temporary Space	4	0	0	0
<b>TOTAL</b>		<b>15,807,537</b>	<b>546,903</b>	<b>15,260,634</b>
<b>H</b>	<b>SUBTOTAL PROJECT BUDGET</b>	<b>151,227,091</b>	<b>64,634,556</b>	<b>86,592,535</b>
<b>I</b>	<b>Visitor Center Budget</b>	<b>11,000,000</b>		
<b>J</b>	<b>TOTAL PROJECT BUDGET</b>	<b>162,227,091</b>		<b>Percent Completed 40%</b>
 Project Manager		Date 12-19-05	 Treanor Architects, PA	
 JE Dunn Construction Co.		Date 12-19-05		
Footnote [1]: reference for inflation rate reporting.				

Financial Budget Reporting Period: Through October 31, 2005

**CAPITOL RESTORATION QUARTERLY REPORT [1]**

Deliverable	Funding Phase	Budget	Expenditure	Balance
A Primary Infrastructure	1	33,538,074	26,250,267	7,287,807
B Visitor Center	1,4	11,212,335	6,178,781	5,033,554
C Parking Garage	1	14,996,665	15,178,943	(182,278)
D East Wing	2	23,948,797	13,946,134	10,002,663
E West Wing	3	35,683,508	2,103,619	33,579,889
F South Wing / Rotunda	4	16,040,175	429,909	15,610,266
G North Wing / Rotunda	4	15,807,537	546,903	15,260,634
H SUBTOTAL PROJECT BUDGET		151,227,091	64,634,556	86,592,535
I VISITOR CENTER		11,000,000		
J TOTAL PROJECT BUDGET		162,227,091	64,634,556	97,592,535

Footnote [1]: reference for inflation rate reporting.

Construction Timeline Reporting Period:			Through October 31, 2005						
CAPITOL RESTORATION CONSTRUCTION TIMELINE									
Deliverable	Funding Phase	Planned Dates		Calendar Weeks			Proposed Dates		
		Start	Stop	Budget Weeks	Actual Weeks	Balance Weeks	Revised Start	Revised Stop	
<b>A Primary Infrastructure</b>									
1	Vault Construction								
	a	NW Vault	1	12/2/02	6/16/03	28.0	28.0	0.0	
	b	NE Vault	1	9/15/03	3/15/04	26.0	26.0	0.0	
	c	SE Vault	1	5/14/04	5/20/05	53.0	53.0	0.0	
	d	SW Vault	1	11/16/04	11/7/05	50.9	50.9	0.0	
2	MEP for Vaults								
	a	NW Vault	1,3	4/1/03	11/23/07	242.4	134.9	107.6	
	b	NE Vault	2	1/3/04	1/31/06	108.4	95.3	13.1	
	c	SE Vault	2	12/27/04	1/31/06	57.1	44.0	13.1	
	d	SW Vault	2,3	2/22/05	11/23/07	143.4	38.7	104.7	
3	Primary Services		1,2,3	12/26/01	11/23/07	308.3	200.7	107.6	
4	Architects / Consultants		1,2,3,4	9/25/00	4/26/11	552.1	266.0	286.1	
5	Construction Manager		1,2,3	3/9/01	11/23/07	350.0	242.4	107.6	
	<b>TOTAL</b>					552.1			
<b>B Visitor Center</b>									
1	Shell		1	8/4/03	12/30/03	21.1	21.1	0.0	
2	Completion		1,3,4	4/1/10	4/26/11	55.7	0.0	55.7	
3	Architects / Consultants		1,2,3,4	9/25/00	4/26/11	552.1	266.0	286.1	
4	Construction Manager		1,3,4	3/9/01	4/26/11	528.6	242.4	286.1	
	<b>TOTAL</b>					552.1			
<b>C Parking Garage</b>									
1	Construction		1	10/8/02	8/24/04	98.0	98.0	0.0	
2	Architects / Consultants		1	9/25/00	8/24/04	204.1	204.1	0.0	
3	Construction Manager		1	3/9/01	8/24/04	180.6	180.6	0.0	
	<b>TOTAL</b>					204.1			
<b>D East Wing</b>									
1	Interior floors		1,2	7/21/03	1/31/06	132.1	119.0	13.1	
2	Basement		1	9/8/03	1/31/06	125.1	112.0	0.0	
3	Exterior / Roof		1,2	6/7/05	1/31/06	34.0	20.9	13.1	
4	Secondary Infrastructure		2	8/1/05	1/31/06	26.1	13.0	13.1	
5	Furnishings		2	9/25/00	1/31/06	279.1	266.0	13.1	
6	Architects / Consultants		1,2,3	9/25/00	1/31/06	279.1	266.0	13.1	
7	Construction Manager		1,2	3/9/01	1/31/06	255.6	242.4	13.1	
8	Temporary Space		1	7/21/03	9/21/03	8.9	8.9	0.0	
	<b>TOTAL</b>					279.1			



Construction Timeline Reporting Period: Through October 31, 2005

**CAPITOL RESTORATION CONSTRUCTION TIMELINE**

Deliverable	Funding Phase	Planned Dates		Calendar Weeks			Proposed Dates	
		Start	Stop	Budget Weeks	Actual Weeks	Balance Weeks	Revised Start	Revised Stop
<b>E West Wing</b>								
1	Interior floors	2,3	11/2/05	11/23/07	107.3	0.0	107.3	
2	Basement	3	11/2/05	11/23/07	107.3	0.0	107.3	
3	Exterior / Roof	3	11/2/05	11/23/07	107.3	0.0	107.3	
4	Secondary Infrastructure	3	11/2/05	11/23/07	107.3	0.0	107.3	
5	Furnishings	3	8/1/03	11/23/07	225.0	117.4	107.6	
6	Architects / Consultants	1,2,3,4	9/25/00	11/23/07	373.6	266.0	107.6	
7	Construction Manager	2,3	3/9/01	11/23/07	350.0	242.4	107.6	
8	Temporary Space	1,2,3	5/15/06	11/23/07	79.6	0.0	79.6	
<b>TOTAL</b>					373.6			
<b>F South Wing / Rotunda</b>								
1	Interior floors	4	11/26/07	6/23/09	80.7	0.0	80.7	
2	Basement	4	11/26/07	6/23/09	80.7	0.0	80.7	
3	Exterior / Roof	4	11/26/07	6/23/09	48.3	0.0	48.3	
4	Secondary Infrastructure	4	11/26/07	6/23/09	80.7	0.0	80.7	
5	Furnishings	4	8/1/04	6/23/09	227.0	65.1	161.9	
6	Architects / Consultants	1,2,3,4	9/25/00	6/23/09	427.9	266.0	161.9	
7	Construction Manager	4	3/9/01	6/23/09	404.3	242.4	161.9	
8	Temporary Space	2,3,4	5/22/07	8/31/07	14.4	0.0	14.4	
<b>TOTAL</b>					427.9			
<b>G North Wing / Rotunda</b>								
1	Interior floors	4	6/24/09	4/26/11	96.0	0.0	96.0	
2	Basement	4	6/24/09	4/26/11	96.0	0.0	96.0	
3	Exterior / Roof	4	6/24/09	4/26/11	52.6	0.0	52.6	
4	Secondary Infrastructure	4	6/24/09	4/26/11	96.0	0.0	96.0	
5	Furnishings	4	8/1/06	4/26/11	218.7	0.0	218.7	
6	Architects / Consultants	1,2,3,4	9/25/00	4/26/11	523.9	266.0	257.9	
7	Construction Manager	4	3/9/01	4/26/11	500.3	242.4	257.9	
8	Temporary Space	4	6/24/09	9/30/09	91.9	0.0	91.9	
<b>TOTAL</b>					523.9			
<b>H TOTAL</b>			12/26/01	4/26/11	486.9			



12-19-05



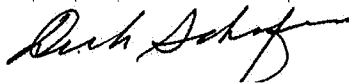
12-19-05

Project Manager

Date

Treanor Architects, PA

Date



12-19-05

JE Dunn Construction Co.

Date

Construction Timeline Reporting Period:			Through October 31, 2005						
<b>CAPITOL RESTORATION CONSTRUCTION TIMELINE</b>									
			Funding		Calendar Weeks			Proposed Dates	
			Planned Dates		Budget	Actual	Balance	Revised	Revised
Deliverable			Phase	Start	Stop	Weeks	Weeks	Weeks	Start Stop
A	Primary Infrastructure		1,2,3	12/26/01	11/23/07	308.3	200.7	107.6	
B	Visitor Center		1,4	8/4/03	4/26/11	403.1	117.0	286.1	
C	Parking Garage		1	10/8/02	8/24/04	98.0	98.0	0.0	
D	East Wing		2	7/21/03	1/31/06	132.1	119.0	13.1	
E	West Wing		3	11/2/05	11/23/07	107.3	0.0	107.3	
F	South Wing / Rotunda		4	11/26/07	6/23/09	82.1	0.0	82.1	
G	North Wing / Rotunda		4	6/24/09	4/26/11	95.9	0.0	95.9	
H	TOTAL			3/9/01	4/26/11	1,226.9	534.7	692.1	

Footnote: [1]

The budget is the one approved by the LCC in 2003. This budget includes a total of 12% inflation from 2001 costs for the next four years inclusive. The inflation rate reported by McGraw-Hill's Engineering News Record from 2001 to third quarter 2004 was 18.18%. The McGraw-Hill forecasted inflation rate for 2005 and beyond is estimated at 1% per quarter. The higher than expected inflation rates are caused in part by higher than expected China imports, oil price increases, and the impact of the hurricanes in Florida on construction materials demand.

The exact amount of inflation will not be known until West Wing labor and materials are actually bid. The budget must be closely monitored and may need to be revisited and plans redrawn to reduce costs or other steps taken if the reported inflation materializes in bid packages. The approved budget was based on construction costs per square foot. When construction documents are ready from Treanor Architects, J.E. Dunn will perform detailed cost estimates for each type of material required and for labor. These estimates carry a higher level of accuracy than gross cost per square foot. Inflation rates will be reported on each Quarterly Status Report and weekly when bid packages are in a bidding status.

## PHASE 1

### REDEFINED FUNDING PHASE I:

- Parking Garage
- 4 Underground Mechanical Vaults
- Visitor Center Shell
- Limited Vault Mechanical/Electrical/Plumbing(MEP)
- Selective Demolition for Northeast Elevator
- Selective Demolition for East Wing
- Quarry Junction City Limestone for East Wing Masonry Restoration
- Reroute Existing Primary Infrastructure Serving the East Wing
- Construct New Primary Infrastructure Serving Statehouse
- Temporary Office Relocations:**
  - East Wing Governor's Staff to North Wing 2nd Floor
  - Senate Leadership to North Wing 2nd Floor
  - Legislative Offices to North, South, and West Wings
  - Division of Budget to Landon State Office Building
- Temporary Site Work Over Northwest Mechanical Vault
- Complete East Wing Construction Documents
- Begin West Wing Construction Documents (60% complete)

REFINED PHASE I:	Annual Budget
Currently Funded	\$3,228,073.00
\$40M Bonds Issued	\$1,203,298.00
\$15M Bond Issued	\$4,431,371.00
Annual Debt Service	9/2004
Spend Down of \$55M	

Parking Garage, North Vaults & Visitor Center Shell  
Construction Schedule  
Start: 12/2001 Stop: 4/2004

## PHASE 2

### REDEFINED PHASE FUNDING II:

- East Wing Interior Restoration Basement through Attic
- East Wing Exterior Masonry Investigation and East Wing Roof Repair
- MEP for East Wing
- Install new Northeast Elevator and New Stair to Attic
- Furnishings for East Wing
- Limited West Wing Selective Demolition
- Temporary Office Relocations:**
  - House Leadership to North Wing 2nd Floor
  - Legislative Offices to North, South Wings of Statehouse and Other State Office Buildings as Required
- Complete West Wing Construction Documents
- Begin West Wing Masonry Investigation & Roof Repair Documents
- Begin South Wing Masonry Investigation & Roof Repair Documents
- Begin North Wing Masonry Investigation & Roof Repair Documents
- Begin South Wing & Rotunda Construction Documents (35%)
- Permanent Office Relocations:**
  - Relocate Senate Leadership, Legislators, and Revisor of Statutes into Completed East Wing.

REFINED PHASE II:	Annual Budget
Currently Funded \$19.8M	\$1,668,915.00
New Funding \$2.55M	\$218,073.00
Annual Debt Service	\$1,886,988.00
Funding Authorized: 2004 Session	
Spend Down of \$22.35M	1/2006

East Wing Construction Schedule  
Start: 7/2003 Stop: 12/2005

## PHASE 3 <sup>[1]</sup>

### REDEFINED FUNDING PHASE III:

- West Wing Interior Restoration Basement through Attic
- Complete West, South, North Wings & Rotunda Exterior Masonry Investigation and West Wing Roof Repair
- MEP for West Wing
- Furnishings for West Wing
- Complete Permanent Restroom Core Outside West Wing 1st through 5th Floor
- Recondition Southwest Elevator
- Limited South Wing/Rotunda Selective Demolition
- Complete Interior Finish of Housekeeping Space in North Addition
- Temporary Office Relocations:**
  - Legislative Offices to North Wing of Statehouse and Other State Office Buildings as Required
  - Committee Rooms to North Wing of Statehouse and Other State Office Buildings as Required
- Complete South Wing & Rotunda Construction Documents
- Begin North Wing & Rotunda Construction Documents (through 35%)
- Reconstruct Law Enforcement Memorial
- Permanent Office Relocations:**
  - Relocate House Leadership, Legislators, Governor's Staff, and Legislative Research into Completed West Wing.

REFINED PHASE III:	Annual Budget
Currently Funded \$26.5M	\$2,343,187.00
New Funding \$13.67M	\$1,169,646.00
Annual Debt Service	\$3,512,833.00
Funding Authorized: 2006 Session	
Spend Down of \$40.17M	11/2007

West Wing Construction Schedule  
Start: 11/2005 Stop: 11/2007

## PHASE 4 <sup>[1]</sup>

### REDEFINED FUNDING PHASE IV:

- SOUTH WING & ROTUNDA**
- South Wing Interior Renovation Basement through Attic
- South Wing Exterior Masonry Restoration & Roof Repair
- Complete Partial Rotunda Renovation MEP for South Wing
- Furnishings for South Wing
- Begin Selective Demolition for North Wing/Rotunda
- Install New Northwest & Southeast Elevators
- Limited North Wing/Rotunda Selective Demolition
- Temporary Site Work Over South Mechanical Vaults
- Complete Interior Finish for Maintenance Area in North Addition
- Temporary Office Relocations:**
  - Legislative Offices to Other State Office Buildings as Required
  - Committee Rooms to Other State Office Buildings as Required
- Complete North Wing & Rotunda Construction Documents
- Permanent Office Relocations:**
  - Relocate Governor's Office, Division of Budget, Legislators, and Committee Rooms into Completed South Wing.
- NORTH WING & ROTUNDA**
- North Wing Interior Renovation Basement through Attic
- Complete Exterior Masonry Restoration & North Wing Roof Repair
- Complete Rotunda Renovation
- MEP for North Wing/Rotunda and Visitor Center
- Furnishings for North Wing and Visitor Center
- Complete Temporary Site Work to Visitor Entrance, Maintenance & Housekeeping Loading Docks
- Complete Interior Finish in New Visitor Center
- Temporary Office Relocations:**
  - Legislative Offices to Other State Office Buildings as Required
  - Committee Rooms to Other State Office Buildings as Required
- Permanent Office Relocations:**
  - Relocate Legislators and Committee Rooms into Completed North Wing.

REFINED PHASE IV:	Annual Budget
New Funding \$33.7M	\$3,114,087.00
New Funding \$11M	\$946,505.00
Annual Debt Service	\$4,060,592.00
Funding Authorized: 2007 Session	
Spend Down of \$44.7M	4/2011

South & North Wings & Rotunda Construction Schedule  
Start: 11/2007 Stop: 4/2011

### TOTAL PROJECT:

- East, West, South & North Wings, Rotunda & Visitor Center Interior - Basement through Attic
- East, West, South & North Wings, & Visitor Center Exterior
- Parking Garage Interior & Exterior
- 4 Underground Vaults
- MEP for East, West, South & North Wings, Rotunda & Visitor Center
- Furnishings for East, West, South & North, Wings, Rotunda & Visitor Center
- North Site Work at Visitor Center
- Temporary Office Relocations:**
  - Relocate Statehouse Personnel within Statehouse, LSOB & DSOB or Other Facilities as Required
- Provide Parking in Underground Parking Garage for Legislators Staff & Division of Budget Staff during Temporary Office Relocations to Statehouse, LSOB, DSOB or Other Facilities as Required

Footnote [1]:  
Reference for inflation reporting.

TOTAL PROJECT:	Annual Budget
Funding \$162.23M	\$13,891,785.00
Annual Debt Service:	

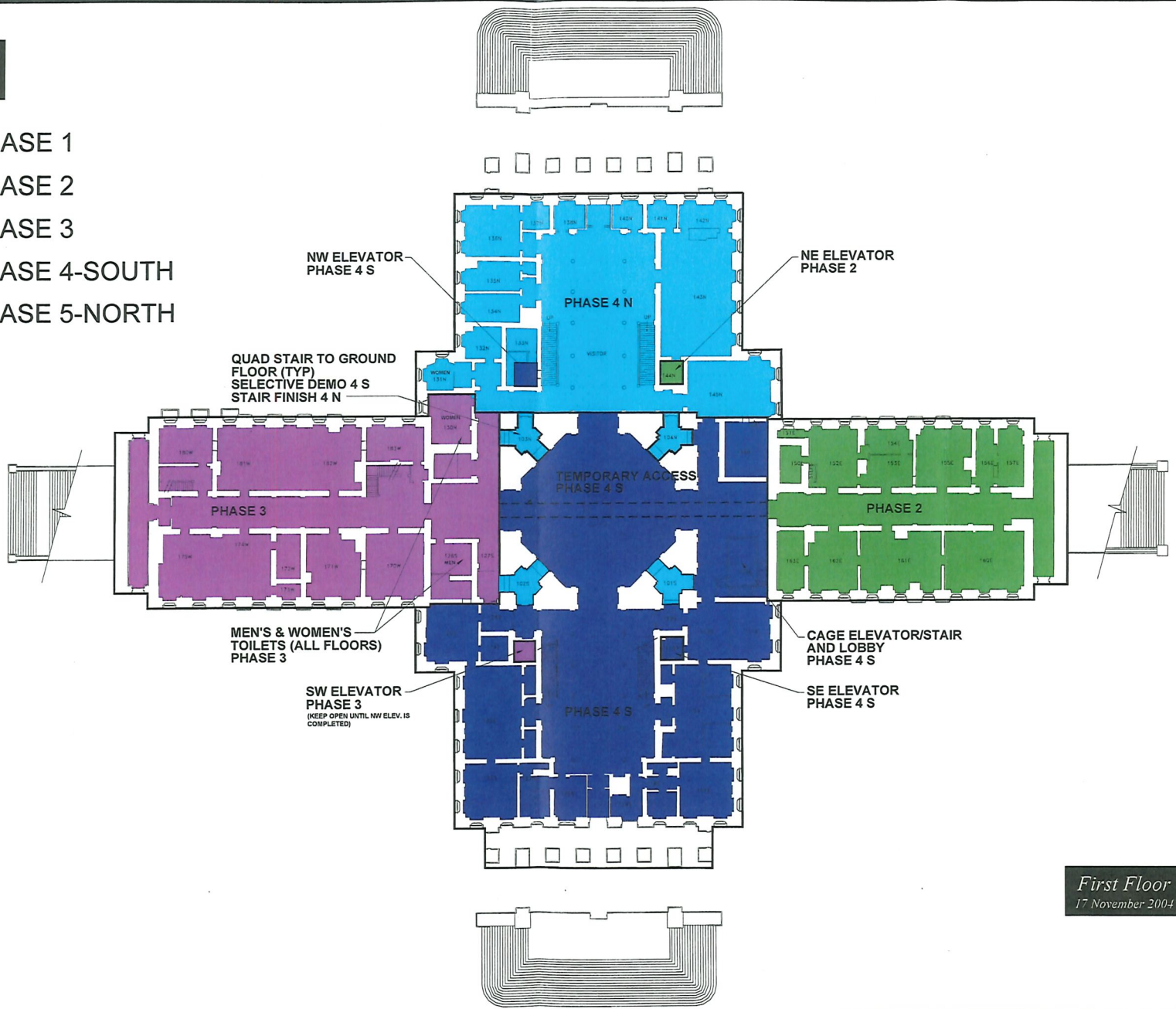
Construction Schedule

1-55



*Construction Sequence*

- PHASE 1
- PHASE 2
- PHASE 3
- PHASE 4-SOUTH
- PHASE 5-NORTH



QUAD STAIR TO GROUND FLOOR (TYP)  
SELECTIVE DEMO 4 S  
STAIR FINISH 4 N

NW ELEVATOR  
PHASE 4 S

NE ELEVATOR  
PHASE 2

PHASE 3

PHASE 4 N

PHASE 2

TEMPORARY ACCESS  
PHASE 4 S

MEN'S & WOMEN'S  
TOILETS (ALL FLOORS)  
PHASE 3

CAGE ELEVATOR/STAIR  
AND LOBBY  
PHASE 4 S

SW ELEVATOR  
PHASE 3  
(KEEP OPEN UNTIL NW ELEV. IS  
COMPLETED)

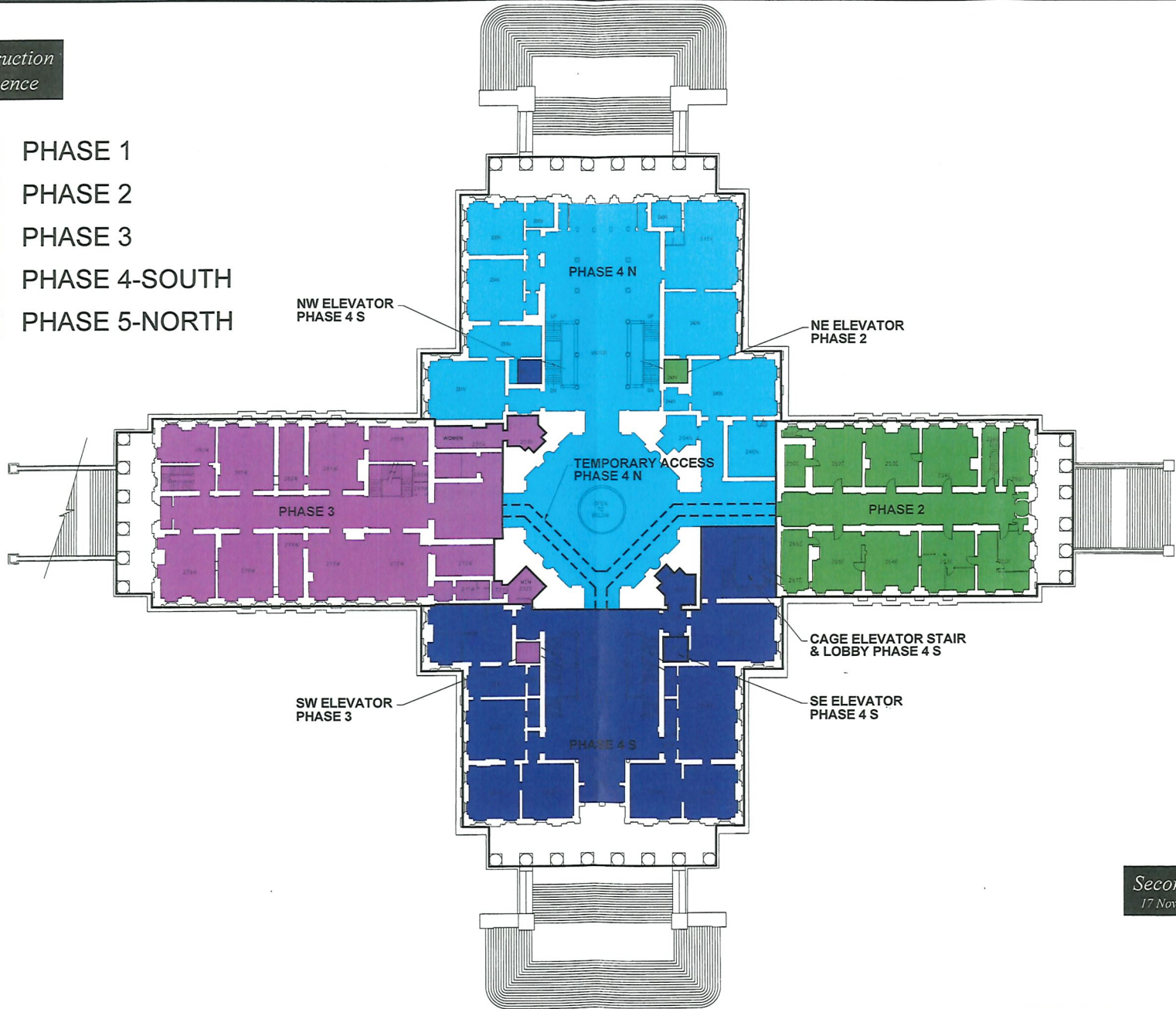
SE ELEVATOR  
PHASE 4 S

PHASE 4 S

*First Floor*  
17 November 2004

*Construction Sequence*

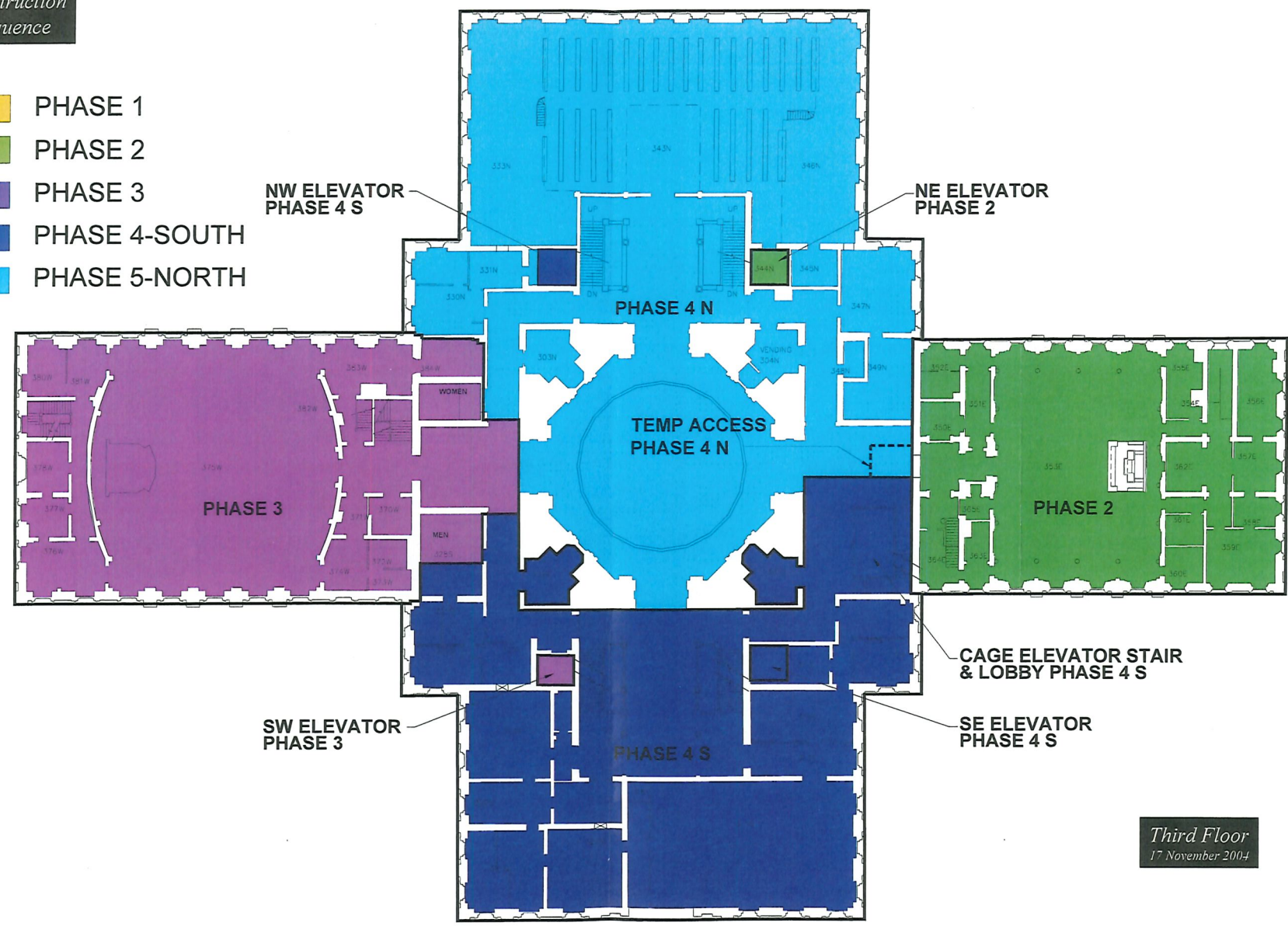
- PHASE 1
- PHASE 2
- PHASE 3
- PHASE 4-SOUTH
- PHASE 5-NORTH



*Second Floor*  
17 November 2004

*Construction Sequence*

- PHASE 1
- PHASE 2
- PHASE 3
- PHASE 4-SOUTH
- PHASE 5-NORTH

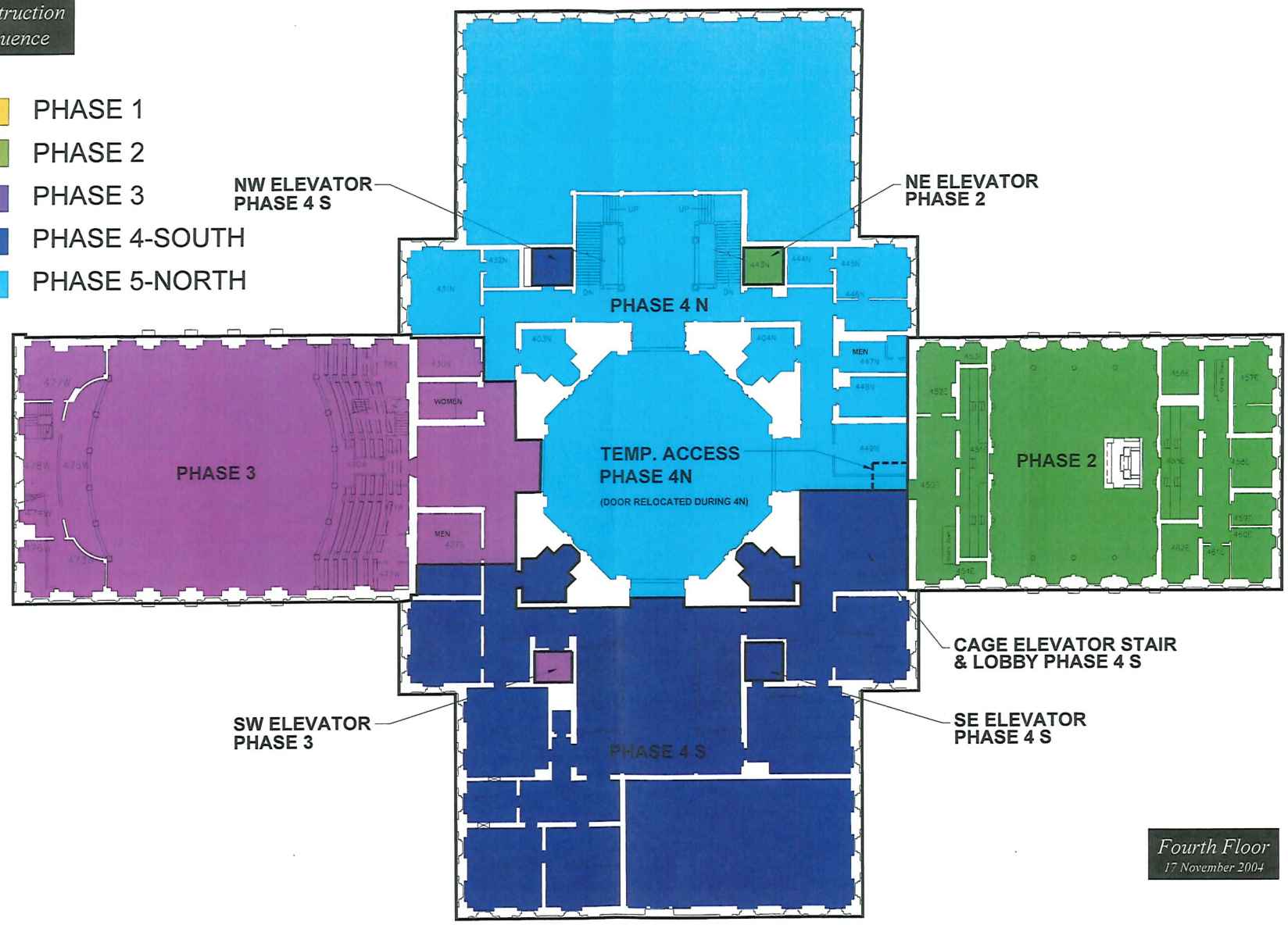


*Third Floor*  
17 November 2004



*Construction Sequence*

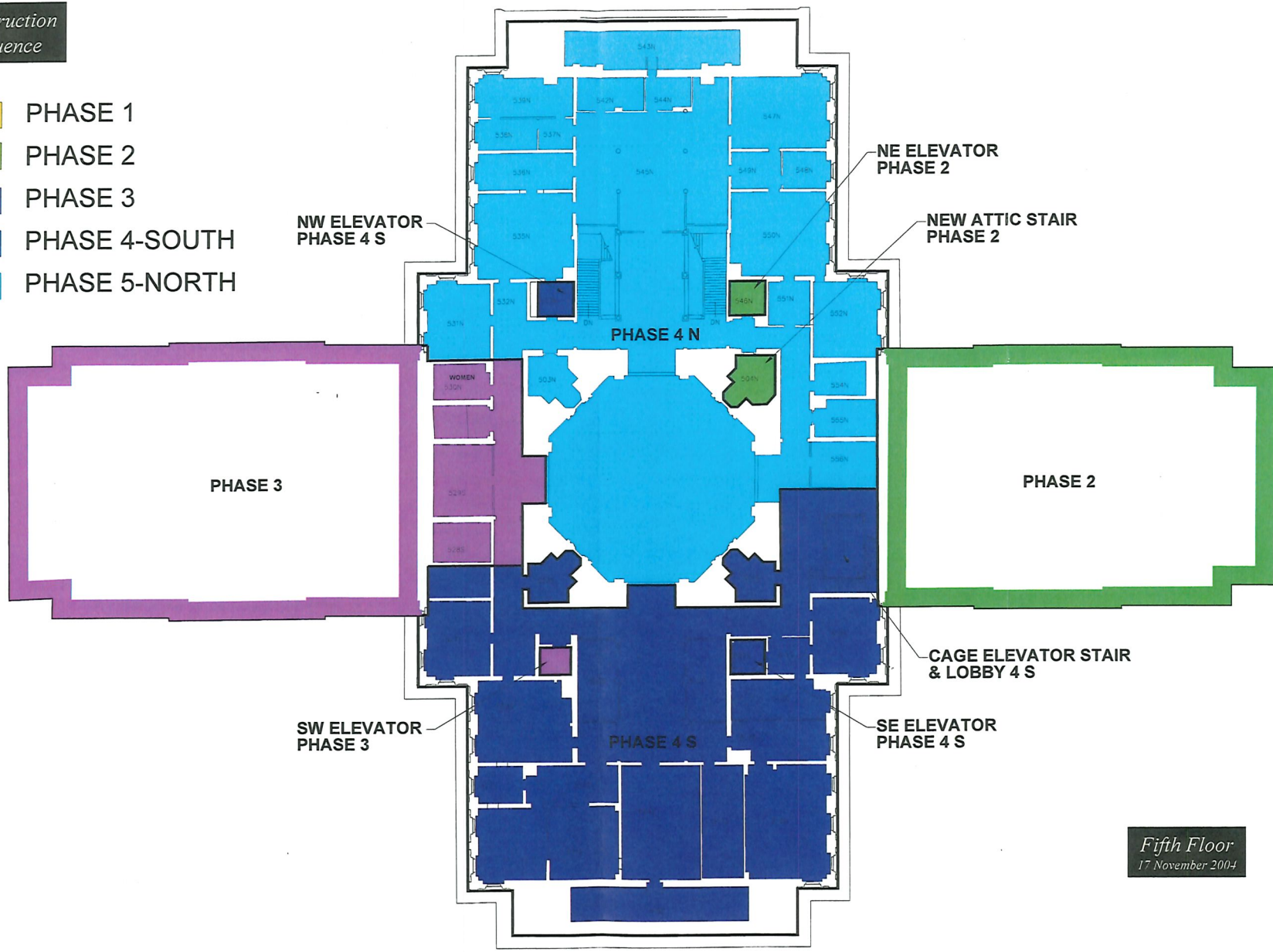
- PHASE 1
- PHASE 2
- PHASE 3
- PHASE 4-SOUTH
- PHASE 5-NORTH





















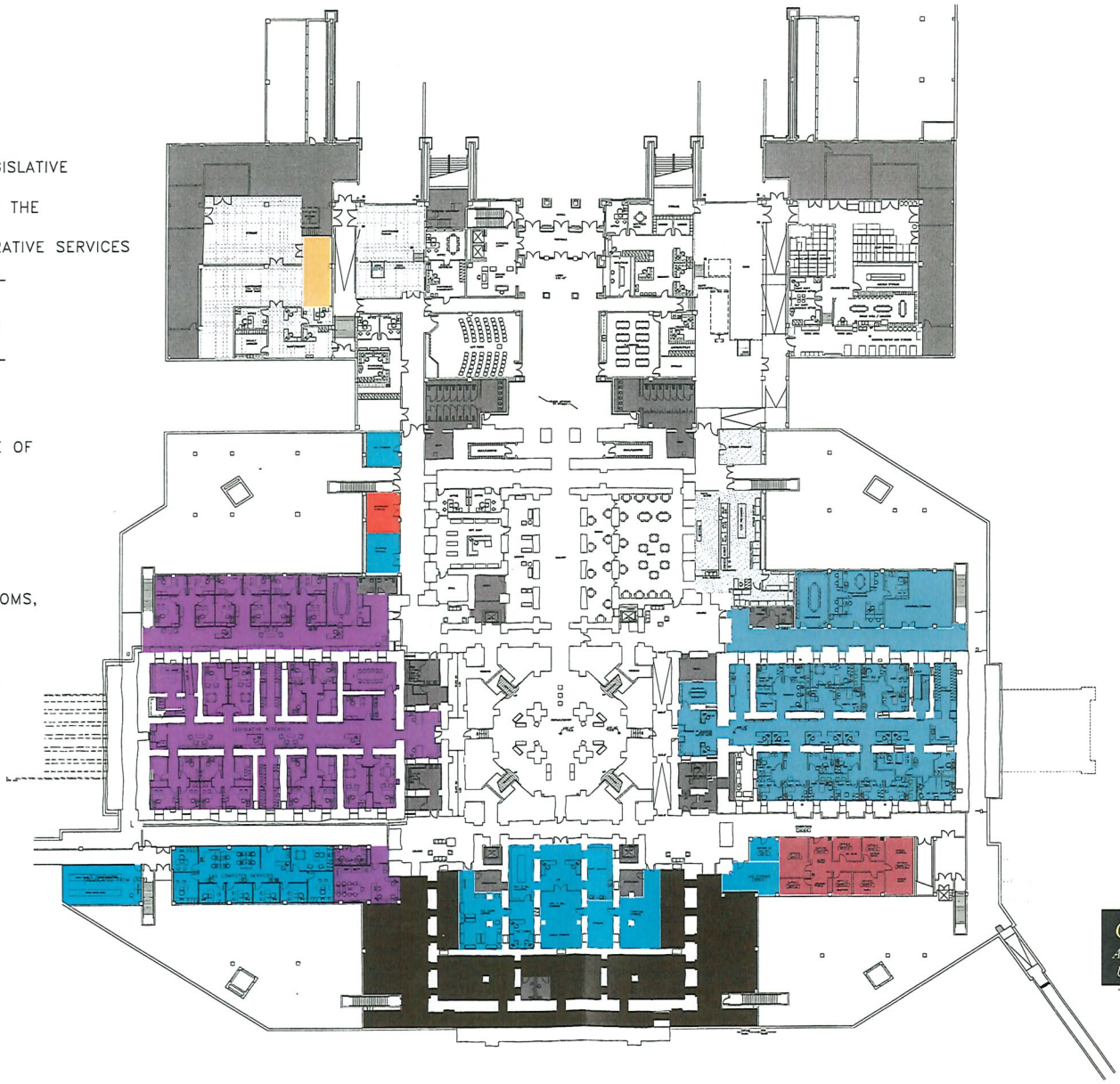
*Fourth Floor*  
17 November 2004

*Construction Sequence*

- PHASE 1
- PHASE 2
- PHASE 3
- PHASE 4-SOUTH
- PHASE 5-NORTH



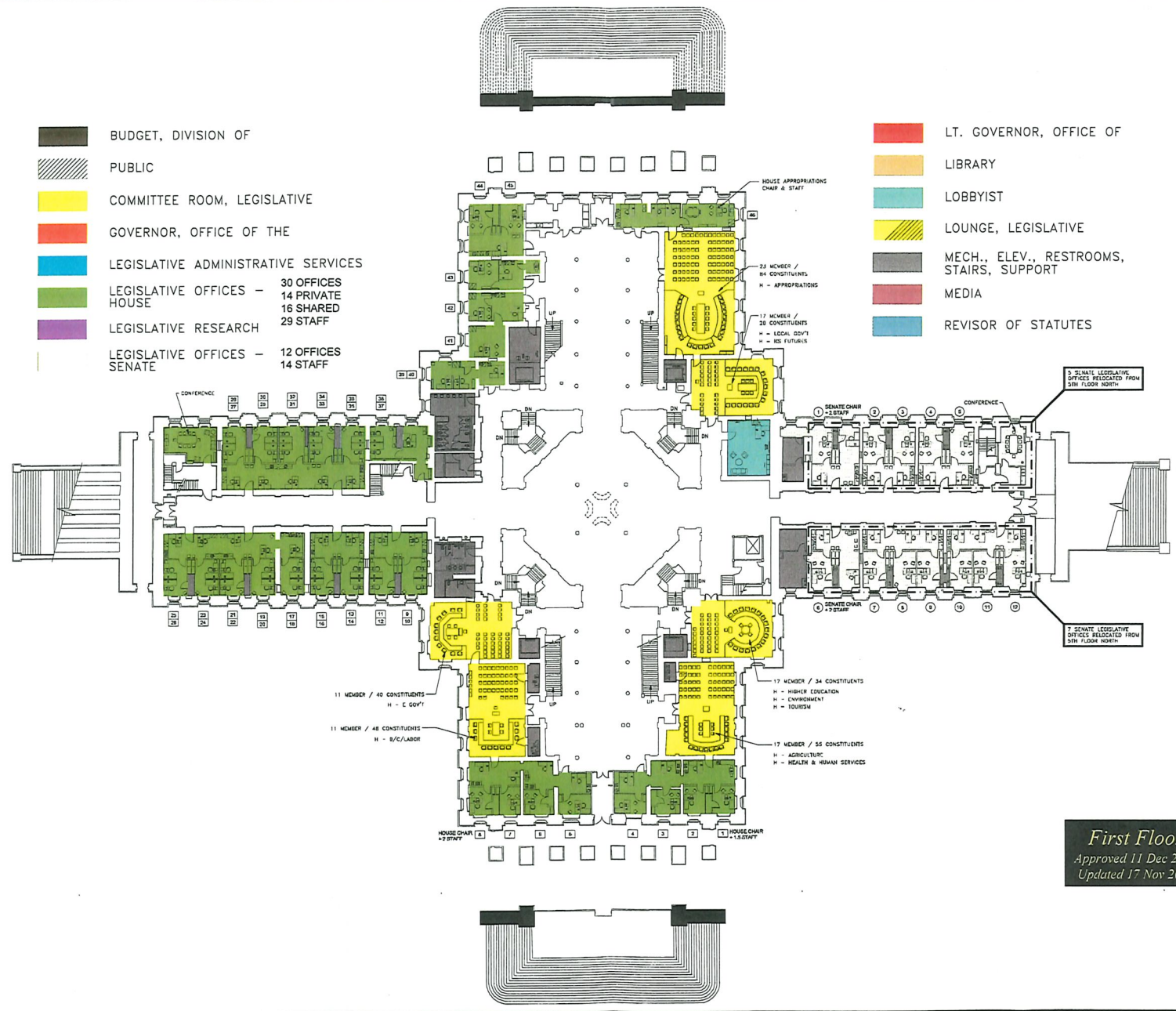
-  BUDGET, DIVISION OF
-  PUBLIC
-  COMMITTEE ROOM, LEGISLATIVE
-  GOVERNOR, OFFICE OF THE
-  LEGISLATIVE ADMINISTRATIVE SERVICES
-  LEGISLATIVE OFFICES - HOUSE
-  LEGISLATIVE RESEARCH
-  LEGISLATIVE OFFICES - SENATE
-  MAINTENANCE
-  LT. GOVERNOR, OFFICE OF
-  LIBRARY
-  LOBBYIST
-  LOUNGE, LEGISLATIVE
-  MECH., ELEV., RESTROOMS, STAIRS, SUPPORT
-  MEDIA
-  REVISOR OF STATUTES
-  HOUSEKEEPING
-  KITCHEN



*Ground Floor*  
 Approved 11 Dec 2002  
 Updated 17 Nov 2004

- BUDGET, DIVISION OF
- PUBLIC
- COMMITTEE ROOM, LEGISLATIVE
- GOVERNOR, OFFICE OF THE
- LEGISLATIVE ADMINISTRATIVE SERVICES
- LEGISLATIVE OFFICES - 30 OFFICES  
14 PRIVATE  
16 SHARED  
29 STAFF
- LEGISLATIVE RESEARCH
- LEGISLATIVE OFFICES - 12 OFFICES  
14 STAFF

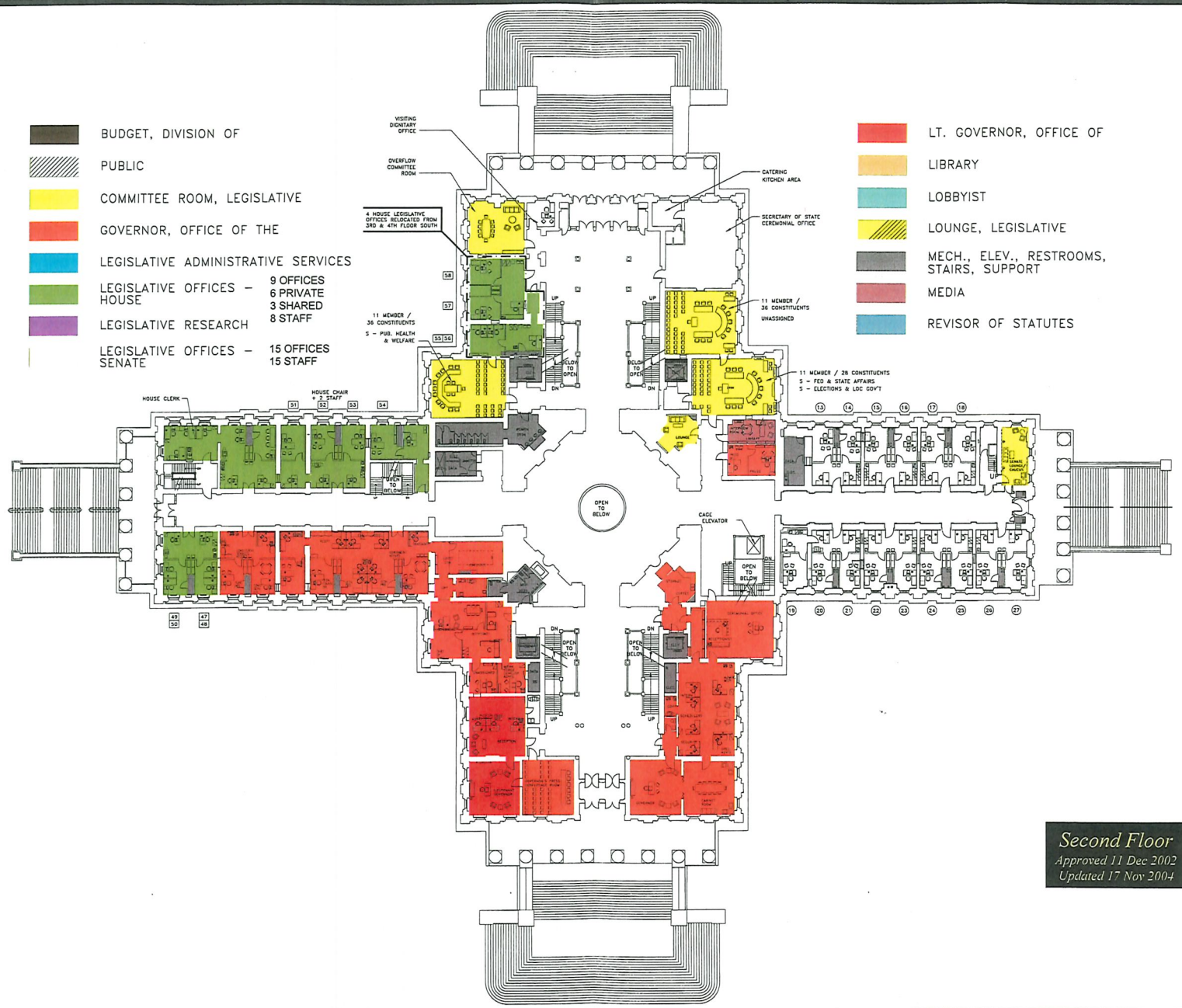
- LT. GOVERNOR, OFFICE OF
- LIBRARY
- LOBBYIST
- LOUNGE, LEGISLATIVE
- MECH., ELEV., RESTROOMS,  
STAIRS, SUPPORT
- MEDIA
- REVISOR OF STATUTES



*First Floor*  
 Approved 11 Dec 2002  
 Updated 17 Nov 2004

- BUDGET, DIVISION OF
- PUBLIC
- COMMITTEE ROOM, LEGISLATIVE
- GOVERNOR, OFFICE OF THE
- LEGISLATIVE ADMINISTRATIVE SERVICES
- LEGISLATIVE OFFICES - 9 OFFICES  
6 PRIVATE  
3 SHARED  
8 STAFF
- LEGISLATIVE RESEARCH
- LEGISLATIVE OFFICES - 15 OFFICES  
15 STAFF

- LT. GOVERNOR, OFFICE OF
- LIBRARY
- LOBBYIST
- LOUNGE, LEGISLATIVE
- MECH., ELEV., RESTROOMS,  
STAIRS, SUPPORT
- MEDIA
- REVISOR OF STATUTES



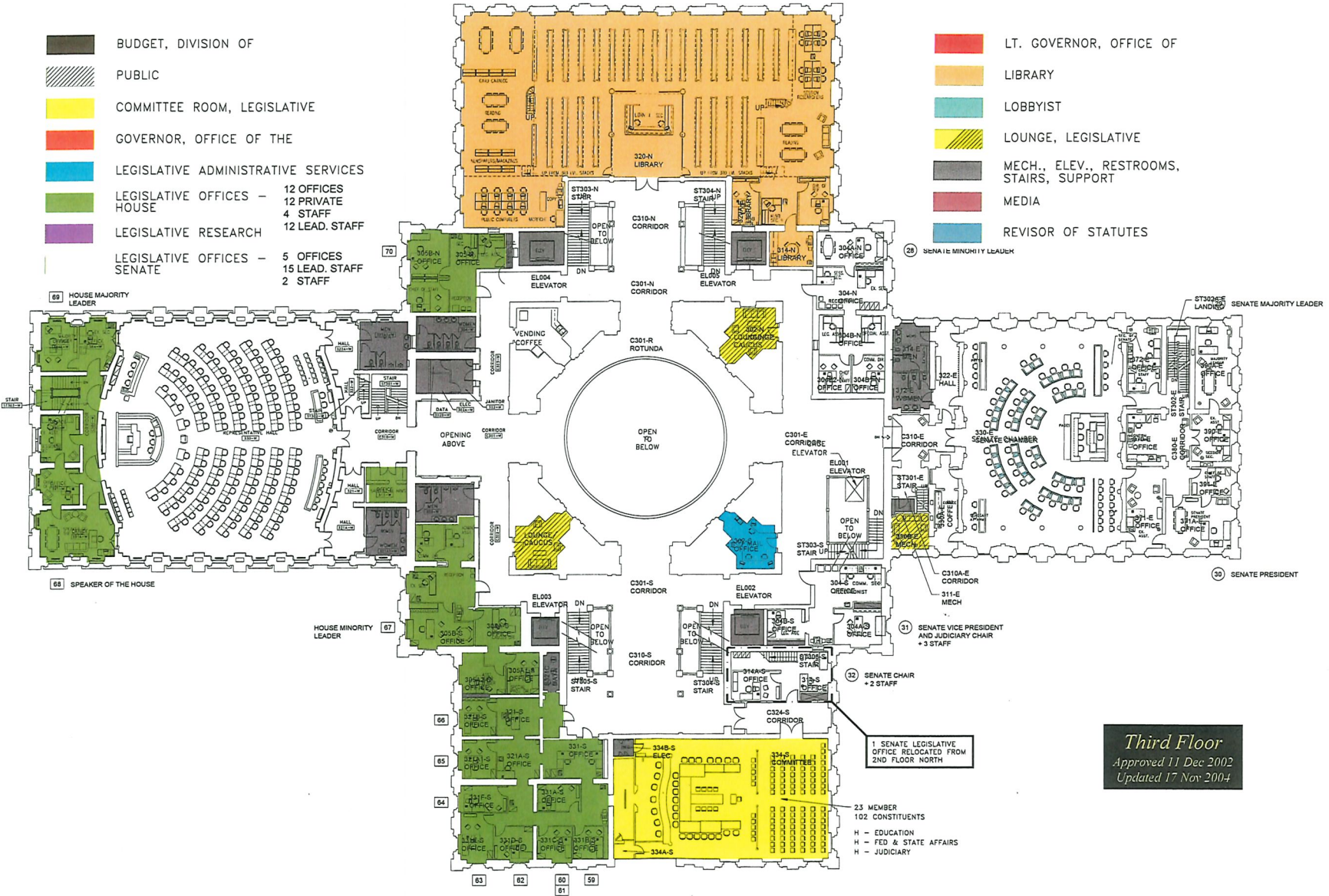
*Second Floor*  
 Approved 11 Dec 2002  
 Updated 17 Nov 2004

- BUDGET, DIVISION OF
- PUBLIC
- COMMITTEE ROOM, LEGISLATIVE
- GOVERNOR, OFFICE OF THE
- LEGISLATIVE ADMINISTRATIVE SERVICES
- LEGISLATIVE OFFICES - HOUSE
- LEGISLATIVE RESEARCH
- LEGISLATIVE OFFICES - SENATE

12 OFFICES  
12 PRIVATE  
4 STAFF  
12 LEAD. STAFF

5 OFFICES  
15 LEAD. STAFF  
2 STAFF

- LT. GOVERNOR, OFFICE OF
- LIBRARY
- LOBBYIST
- LOUNGE, LEGISLATIVE
- MECH., ELEV., RESTROOMS, STAIRS, SUPPORT
- MEDIA
- REVISOR OF STATUTES



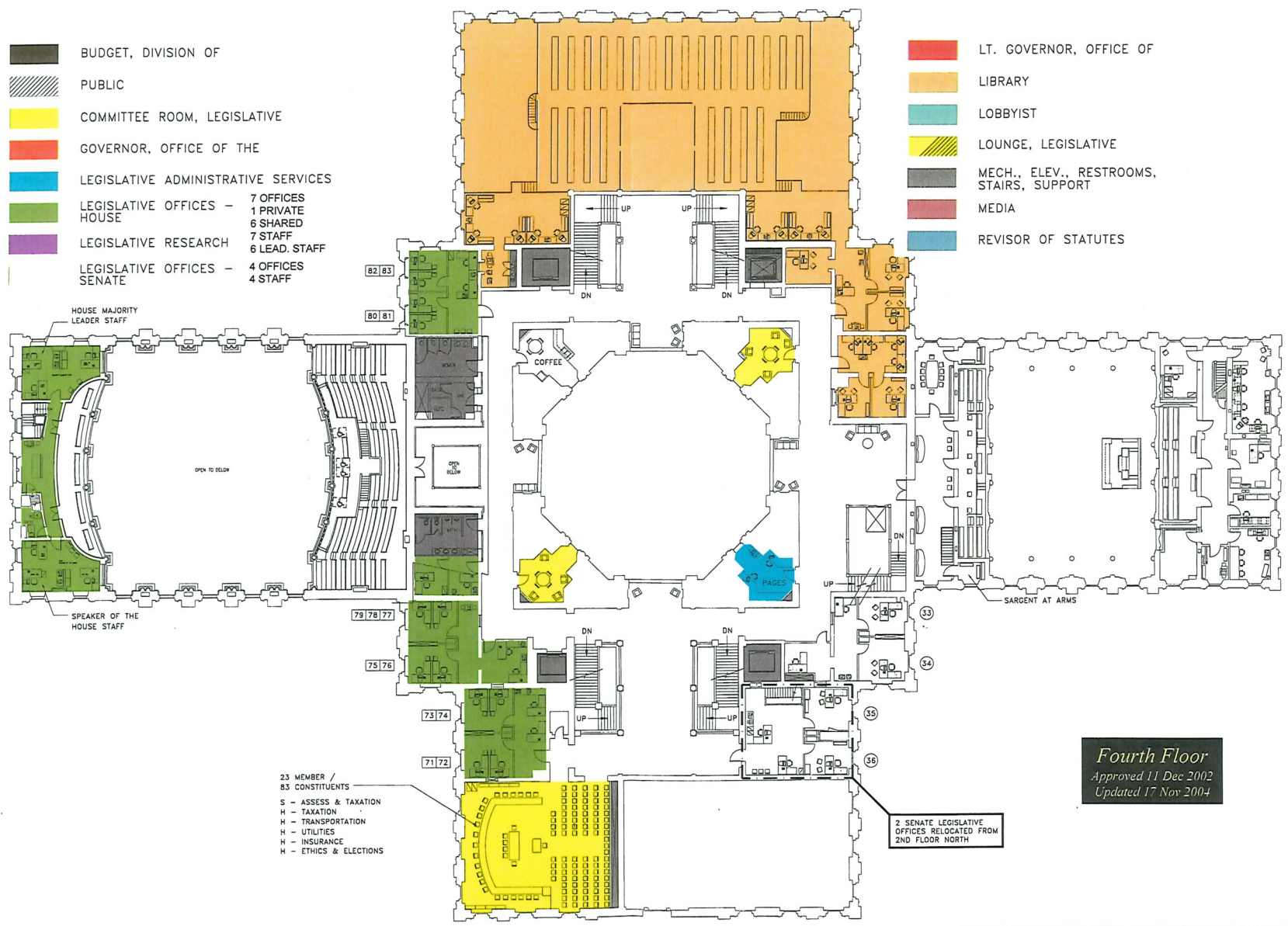
*Third Floor*  
Approved 11 Dec 2002  
Updated 17 Nov 2004

1 SENATE LEGISLATIVE OFFICE RELOCATED FROM 2ND FLOOR NORTH

23 MEMBER  
102 CONSTITUENTS  
H - EDUCATION  
H - FED & STATE AFFAIRS  
H - JUDICIARY

- BUDGET, DIVISION OF
- PUBLIC
- COMMITTEE ROOM, LEGISLATIVE
- GOVERNOR, OFFICE OF THE
- LEGISLATIVE ADMINISTRATIVE SERVICES
- LEGISLATIVE OFFICES -  
HOUSE
- LEGISLATIVE RESEARCH
- LEGISLATIVE OFFICES -  
SENATE

- LT. GOVERNOR, OFFICE OF
- LIBRARY
- LOBBYIST
- LOUNGE, LEGISLATIVE
- MECH., ELEV., RESTROOMS,  
STAIRS, SUPPORT
- MEDIA
- REVISOR OF STATUTES



HOUSE MAJORITY  
LEADER STAFF

OPEN TO BELOW

SPEAKER OF THE  
HOUSE STAFF

COFFEE

PAGES

SARGENT AT ARMS

- 23 MEMBER /  
83 CONSTITUENTS
- S - ASSESS & TAXATION
  - H - TAXATION
  - H - TRANSPORTATION
  - H - UTILITIES
  - H - INSURANCE
  - H - ETHICS & ELECTIONS

2 SENATE LEGISLATIVE  
OFFICES RELOCATED FROM  
2ND FLOOR NORTH

*Fourth Floor*  
Approved 11 Dec 2002  
Updated 17 Nov 2004



- BUDGET, DIVISION OF
- PUBLIC
- COMMITTEE ROOM, LEGISLATIVE
- GOVERNOR, OFFICE OF THE
- LEGISLATIVE ADMINISTRATIVE SERVICES
- LEGISLATIVE OFFICES - 25 OFFICES  
8 PRIVATE  
17 SHARED  
21 STAFF
- LEGISLATIVE RESEARCH
- LEGISLATIVE OFFICES - 4 OFFICES  
6 STAFF

- LT. GOVERNOR, OFFICE OF
- LIBRARY
- LOBBYIST
- LOUNGE, LEGISLATIVE
- MECH., ELEV., RESTROOMS,  
STAIRS, SUPPORT
- MEDIA
- REVISOR OF STATUTES

SUB-COMMITTEE ROOM 1225

11 MEMBER / 90 CONSTITUENTS  
 S - WAYS & MEANS  
 S - COMMERCE  
 S - EDUCATION  
 S - JUDICIARY

17 MEMBER / 57 CONSTITUENTS  
 S - UTILITIES  
 S - AGRICULTURE  
 S - NATURAL RESOURCES  
 S - FINANCIAL INST.  
 H - FINANCIAL INST.

*Fifth Floor*  
 Approved 11 Dec 2002  
 Updated 17 Nov 2004



**CAPITOL RESTORATION AND PRESERVATION  
ROLES AND RESPONSIBILITIES**

(As approved by LCC on December 11, 2002)

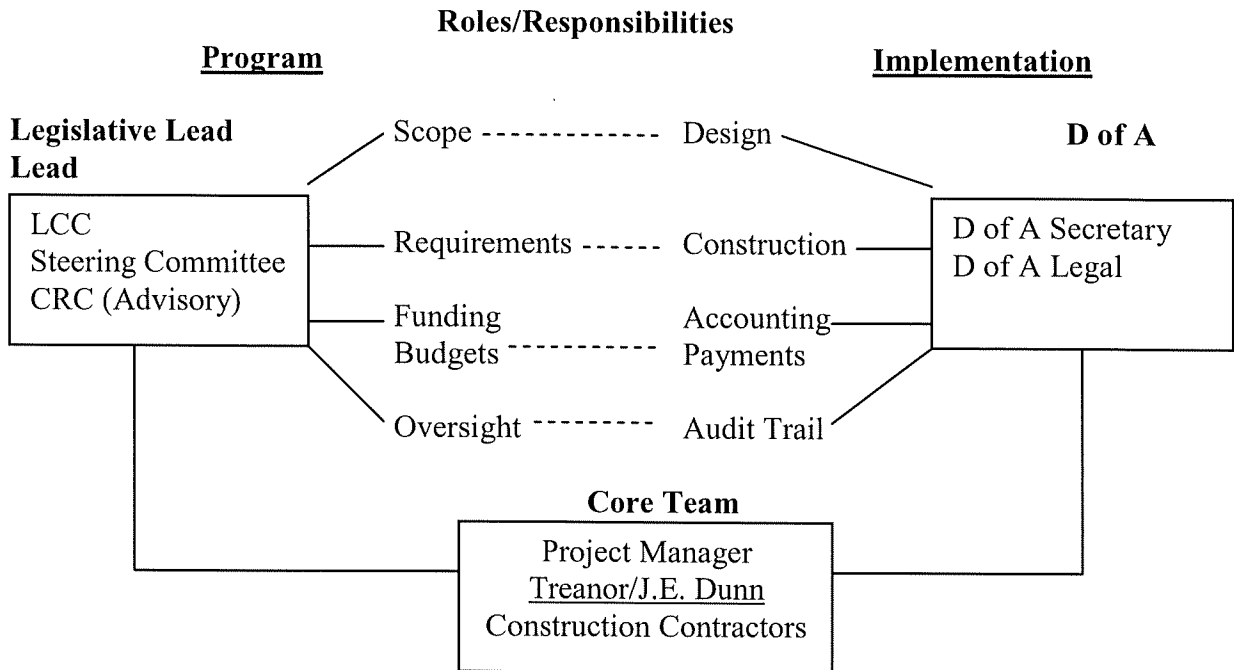
**Owner Intent**

Pursuant to K.S.A. 2001 Supp. 75-2262, the \$40 million Statehouse Project is the joint responsibility of the Secretary of Administration and the Legislative Coordinating Council (LCC). Pursuant to section 13(1) of chapter 216 of the *2001 Session Laws of Kansas*, the Department of Administration is authorized to carry out a \$15 million Capitol Complex Parking Garage Project, which is substantially related to the Statehouse Project. The LCC and the Secretary of Administration both desire the Statehouse Project and the Parking Garage Project to be carried out under identical roles and responsibilities and treated as a single project pursuant to the provisions set forth below.

The LCC is responsible for project scope, program, budget/funding, project requirements, and oversight. The Department of Administration shall implement the scope, requirements, program and budgets. Thus the Department implements:

- Architect designs to meet LCC scope;
- Construction to satisfy LCC requirements;
- Accounting/payments that align with LCC approved budgets and funds; and
- Audit trails that fully satisfy LCC oversight responsibilities.

Since the State is the owner, it is important that all contracts clearly reflect who is responsible in the State for owner approvals. The LCC is responsible for programmatic decisions; while the Department of Administration is responsible for implementation. The state's Project Manager (PM) works for the LCC and the Department of Administration. The PM serves the LCC in the role of Statehouse Architect and serves the Department of Administration in the role of Project Manager. When a responsibility or action involves implementation, the PM's authority is from the Secretary for the Department of Administration. When a responsibility or action involves program or funding, the PM's authority is from the LCC. When actions and decisions overlap, the PM will draw authority from both the LCC and the Secretary for the Department of Administration. The following graphic depicts the dual authorities which control the project, with the understanding that the LCC is the authority of last resort on issues that may conflict between the Department and LCC.



As the graphic shows, the Project Architect (Treanor) and Construction Manager (J. E. Dunn) form a core team working under the direction of the Project Manager. Construction contractors work under the direction of J.E. Dunn's Construction Manager, who is assisted by Treanor on activities related to design requirements, substantial completion, and punch lists/inspections.

The Architect (Treanor) handles all designs/drawings/specifications, prepares preliminary budgets, provides field inspection services, recommends on completion, reviews change orders, and assists the Project Manager on architecture issues and project administration. Other duties are covered in the Architect contract.

The Construction Manager implements architect designs, provides assurances on design constructability, handles multi-bid packages, and prepares GMP amendments with assistance from Treanor and the Project Manager. The Construction Manager directs the overall implementation of construction activities, provides budget estimates, and assists the Project Manager on construction issues and project administration. The listing of responsibilities reflects major duties of the Architect and Construction Manager. Additional responsibilities are covered in the Construction Manager contract and the Architect's contract.

## Approval Process

1. All GMP amendments, Addenda to the Contract for Architectural Services (Addenda), change orders, other contracts, or monetary commitments of whatever nature that change any LCC approved phase project scope or are not within the funded budget must be briefed by the PM and Architect to the Secretary of Administration, and the LCC or its designee, and the PM and Director of the Division of Facilities Management (DFM) shall provide their recommendations. The LCC or its designee and the Secretary of Administration must approve all such GMP amendments, Addenda, change orders, other contracts, or monetary commitments of whatever nature. The Secretary of Administration and PM shall sign all such documents.
2. All GMP amendments, Addenda, change orders, other contracts, or monetary commitments of whatsoever nature in an amount of less than \$75,000 which are within the funded budget and LCC approved phase project scope may be approved by the Secretary of Administration and signed by the Secretary of Administration and PM. If it is unclear to the PM or Secretary of Administration that a particular GMP amendment, Addenda, change order, other contract, or monetary commitment of whatever nature is within the funded budget or within the LCC approved phase project scope, the provisions of paragraph 1 above shall be followed. The Director of DFM and the PM shall provide the Secretary of Administration their recommendations.
3. Except for items requiring approvals pursuant to paragraph 1 or 2 above, the PM and Secretary of Administration approves and signs any GMP amendments, Addenda, change orders, other contracts, or monetary commitments of whatever nature which do not affect the LCC approved phase project scope, approved budget, or approved project timeline.
4. All GMP amendments, Addenda, change orders, other contracts, or monetary commitments of whatever nature shall be reported by the PM to the Secretary of Administration and LCC or their designee, at least monthly.
5. Whenever matters relating to the capitol renovation project require approval of the LCC or its designee and a particular approval item requires, in the opinion of the Secretary of Administration, an expedited decision, the Secretary of Administration may request approval of such item by the President of the Senate and Speaker of the House after review by the Director of Legislative Administrative Services. If any such approvals are granted, the Director of Legislative Administrative Services shall provide copies to all members of the LCC, the PM and the Secretary of Administration.

## **Governance**

1. Whenever the LCC designates one or more persons to serve as a designee for the LCC for any capitol renovation project matter, such delegation shall be in writing and the LCC shall provide a copy thereof to the PM, Construction Manager, Architect and Secretary of Administration.
2. Any approvals required by the LCC shall be documented in the minutes of the LCC and a copy given to the PM and Secretary of Administration. Any approvals by an LCC designee shall be communicated in writing to the LCC and a copy thereof included in the LCC minutes.

Document No. 22761v3