

MINUTES OF THE HOUSE HIGHER EDUCATION COMMITTEE

The meeting was called to order by Chairman Tom Sloan at 3:30 P.M. on January 19, 2005 in Room 231-N of the Capitol.

Committee members were present.

Committee staff present: Mary Galligan, Kansas Legislative Research Department
Art Griggs, Revisor of Statutes Office
Linda Reed, Committee Secretary

Conferees appearing before the committee: Hal Gardner Executive Director of KAN-ED
Chris Tozier - Filter Logix

Others attending:
See attached list.

Chairman Sloan requested introduction of a bill relating to research universities and the sale of their patents and processes. He also requested introduction of a bill pertaining to the sale of parcels of land owned by Regents' institutions. Motion to introduce proposed legislation moved by Representative Storm and seconded by Representative Johnson. The motion carried.

Chairman Sloan welcomed Hal Gardner, Executive Director of KAN-ED, to the committee. Mr. Gardner provided an overview of the KAN-ED website summarizing the annual report provided each year. This KAN-ED site provides a summary of information pertaining to KAN-ED's primary objective, accomplishments, future plans, comparisons with other states regarding network oversight, construction time lines and network costs. (Attachment 1) Mr. Gardner provided references to various web-site pages illustrating what KAN-ED does and does not do, where KAN-ED is going, KAN-ED announcements, calendar of events, and services provided by the organization. (Attachment 2) Mr. Gardner responded to questions from the committee.

Representative Carlin requested introduction of a bill regarding Military-In-State Educational Incentives. The motion was seconded by Representative Storm. The motion carried.

Chairman Sloan introduced, Chris Tozier of FilterLogix who presented an overview of FilterLogix's technology and products. Mr. Tozier stated that FilterLogix's main goal is to provide web filtering for any user, whether in the home, school, libraries, or business institutions. The filtering system runs on a windows platform from the network server, allowing access according to perimeters set. (Attachment 3) Chairman Sloan stated to the committee that knowledge of FilterLogix's type of filter and competing technologies may be useful as censorship and screening issues arise. Chairman Sloan asked Chris Tozier to provide to the committee a list of school districts in Kansas now using FilterLogix software. Mr. Tozier, and his associate Richard Seto, responded to questions from the committee.

The meeting was adjourned at 4:55 p.m.

The next meeting will be January 24, 2005 at 3:30 p.m.

HOUSE HIGHER EDUCATION COMMITTEE GUEST LIST

DATE 11/19/05

NAME	REPRESENTING
Dan Brogren	_____
Jim Edwards	KASB
Justine Ahle	_____
Stephanie Tian	_____
Mark Dodd	_____

Vision Statement

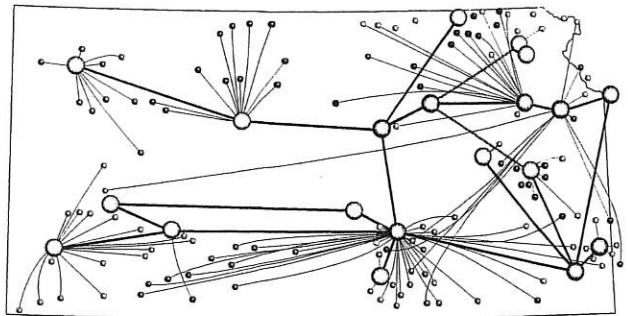
Kan-ed will work to enhance human and professional relationships through the utilization and promotion of efficient and appropriate use of network technologies.

Mission Statement

Kan-ed will support libraries, K-12 schools, higher education and hospitals by assisting with access to commercial Internet resources, providing access to private network resources for distance learning and applications, and providing access to other Internet technologies and technology services.

Primary Objectives

- Maintain and expand the private secure network
- Provide a framework for quality content & services
- Provide members with subsidies to help reduce their Internet fees



Call to Action

The Legislative act that created Kan-ed includes a "Sunset" provision, effective June 30, 2005. To guarantee progress that has been made by Kan-ed in the provision of broadband service to our schools, hospitals and libraries, continuance of support from the Kansas Universal Service Fund (KUSF) is critical.

The Scorecard

Kansas Legislative "Shalls"	KAN-ED Accomplishments
Provide a high-speed, private, secure network, to which Kansas Hospitals, K-12 schools, Libraries, and Higher Education Institutions can connect.	The Kan-ed "extended edge" private network is 100% operational. (see state map).
Provide access to 75% of member institutions who applied for membership in the first year. Access is recognized as not only the physical connection to the network, but also the provision of services to Kan-ed members.	As of the statutory date of July 1, 2004, seventy-seven percent (77%) of the 939 eligible Higher Education Institutions, Hospitals, K-12 schools, and Libraries have become Kan-ed members and have access to Kan-ed services.
Provide access to a stable platform for video conferencing and distance learning applications.	130 K-12 Interactive Distance Learning (IDL) sites initiated approximately 6,000 sessions resulting in more than 15,000 individual connections between Kan-ed sites.
Provide members with subsidies to help reduce their fees for Internet 1 (commercial Internet) access from local providers.	The Kan-ed Broadband Subsidy Program provided \$770,000 in 2004 for bandwidth acquisition support to 338 of its member institutions.
Provide Technology Grants to help members purchase equipment and services to connect to the Kan-ed network.	The Kan-ed Enhancing Technology Grant Program (ETGP) distributed \$3M to 137 constituent members in 2004 to upgrade older ITV and video conferencing systems to state-of-the-art H.323 (video over Internet Protocol) standards.
Collaborate with private providers. Kan-ed shall not impair existing contracts with Internet providers.	Kan-ed is leasing telecommunications facilities and equipment from multiple local service providers to create a backbone across the state. Network access points (NAPs) at strategic locations connect the state's telecommunications providers directly, minimizing tariffs and access fees.
Provide access to content and services that enhance the private network.	The Kan-ed competitive Content and Services Development Grant Program provided \$250,000 to its members for the 2004 fiscal year to develop programs that r

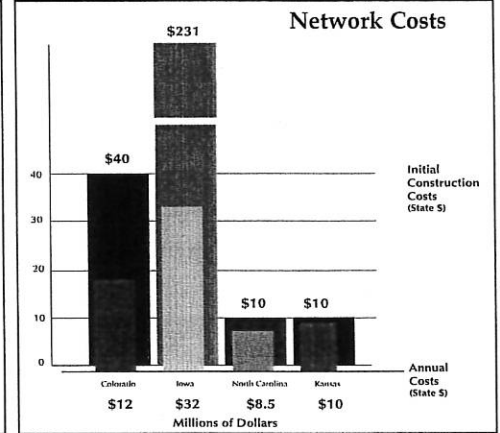
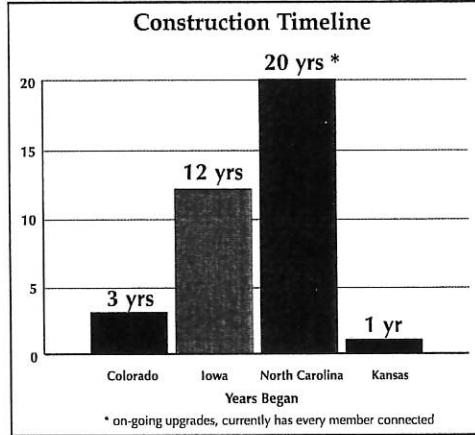
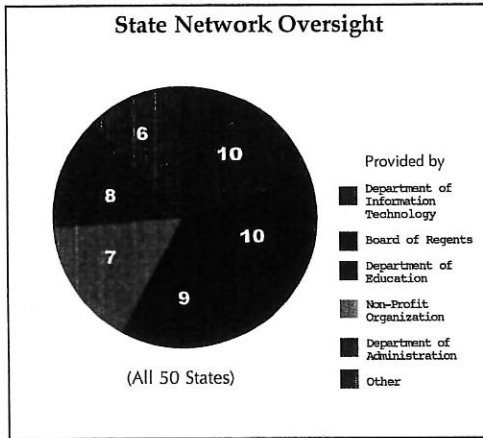
Future Plans

Kan-ed will respond to the Legislative mandate by: 1) building and maintaining a *network* to connect to and serve its constituents, 2) acquiring, developing or aiding in the provision of *content & services* and 3) assuring *access to and input* concerning its operations and services.

Kan-ed - Stretching the Kansas Dollar

Kan-ed has actively tapped the federal E-rate program so that Kansas taxpayer dollars can be stretched as far as possible. Kan-ed has applied for and has received confirmation that it is eligible for federal funding discounts in the amount of \$1.7 million dollars for fiscal year 2005. This equates to a 65% discount on leased circuits and equipment . . . and will allow Kan-ed to extend the network further into the state.

State Comparisons



Primary Stakeholders

Kansas Library Association
 Kansas State Library
 Kansas Board of Regents
 Kansas Hospital Association
 Kansas State Department of Education
 Kansas Association of School Librarians

Industry Providers

Blue Valley Telecommunications Inc.
 CISCO
 Cox Communications
 Craw-Kan Telephone Cooperative Inc.
 Division of Information Systems & Communication (DISC)
 Haviland Telephone Co. Inc.
 JBN Telephone
 Juniper Networks
 KanOkla
 Network Tool & Dye
 Pioneer Telephone Association, Inc.
 Rainbow Telephone
 Rural Telephone Service Co., Inc.
 S & A Telephone
 S & T Telephone
 SBC
 SC
 SKT
 Sprint
 Sunflower Broadband
 Telcove
 United Telephone

Partners

KanREN - Kansas Research and Education Network
 GPN - Great Plains Network
 Telenet 2 (Kansas Regents Network - Teleconferencing)
 KTCN - Kansas Technology Coordinators Network
 TAKE - Technology Assistance for Kansas Educators
 KAECT - Kansas Assn. for Ed. Communications & Technology
 KAIDE - Kansas Association of Interactive Distance Education
 MACE - Mid-America Assn. for Computers in Education
 Kansas Digital Library
 Colleague to Colleague
 KUMC Rural Health
 Kansas Department of Health & Environment - Rural Health
 Kansas Education Resource Center (KSDE)
 HPR* TEC (High Plains Regional Technology in Education Consortium)

Kan-ed Staff

Hal Gardner	Executive Director of Kan-ed
Charmine Chambers	Technical Operations Assistant
Michael Grobe	Video Applications Specialist
Leanne Houser	Accounting Specialist
Chrisy Madden	Portal & Membership Services Coordinator
Eldon Rightmeier	Director of Technical Operations and Planning
Linda Rucker	Senior Administrative Assistant
Randy Stout	Research & Development Coordinator
Brad Williams	Director of Business Operations and Planning



About Kan-ed	Kan-ed Communities	Kan-ed Services
------------------------------	------------------------------------	---------------------------------

- Welcome to Kan-ed
- [About Kan-ed](#)
- [News and Events](#)
- [Services](#)
- [Governance](#)
- [Membership](#)
- [Links](#)
- [Contacts](#)

Welcome to Kan-ed

Kan-ed is a program created by the Kansas Legislature and administered through the Kansas Board of Regents. The purpose of the program is to expand the collaborative capabilities of Kansas' public institutions, specifically k12 schools, higher education, libraries and hospitals.



My Kan-ed
Login
Register

What Kan-ed Does

First, Kan-ed provides a statewide private network to which constituents may connect for video collaboration and data sharing. The network is leased through Kansas' facility and equipment providers and is managed through a Network Operations Center (NOC).

Second, Kan-ed will provide members with a framework for quality content and services. This includes negotiating content and services for our members and allowing access to such services through the Kan-ed web site.

Third, Kan-ed will provide members with grants and subsidies to help reduce their commercial internet and private network connection costs.

What Kan-ed Doesn't Do

Kan-ed does not act as an Internet Service Provider (ISP). Rather, Kan-ed supports access to the commercial Internet through local providers, i.e. ISPs or telecoms.

Where Kan-ed Is Going

Kan-ed is working with local providers to connect many more constituents next year a House Higher Education Committee

1/19/05

Attachment 2



About Kan-ed	Kan-ed Communities	Kan-ed Services
------------------------------	------------------------------------	---------------------------------

- Welcome to Kan-ed
- [About Kan-ed](#)
- [News and Events](#)
- [Services](#)
- [Governance](#)
- [Membership](#)
- [Links](#)
- [Contacts](#)

Kan-ed News & Events

Kan-ed Announcements

[Kan-ed Network Status Report](#)

As presented by Eldon Rightmeier, Director of Network Operations and Security at the December 3, 2004 Kan-ed User Advisory Council Meeting.

[Kan-ed Annual Membership Meeting & Leadership Forum 2005](#) - The theme is Re-Imagine 2005! with feature speaker [Tom Peters](#). This event made possible with contributions from Sprint and Cox Communications. [Click Here to see Brochure \(.pdf format\)](#)

[Kan-ed Content & Services Initiative Grant Program FY2004](#)

Based on the technical review conducted by a panel of eight experts representing all of the constituencies holding memberships in the Kan-ed network, 53 applications were rated and ranked to form the following slate of recommendations for 10 awards in the Content & Services Initiative.

[Little Town on the Prairie](#)

Visit littletownontheprairie.org, Bill Kurtis's vision of a recreated prairie town circa 1890, near Independence, Kansas, home of the famed Little House on the Prairie. Learn how Kan-ed helped with the effort.

Vendor Expo Registration

Kan-ed will be hosting its second annual Kan-ed Vendor Expo and Showcase on February 9-10 in Wichita, Kansas at the Radisson Hotel. We believe the expo and showcase will be another avenue through which Kan-ed users can better realize the potential which exists for helping make Kan-ed a major solution provider to Kansans

- [Vendors register here](#)
- [Attendees register here](#)

Calendar of Events

January 26-28, 2005 - USA Convention - United School Administrators

2-2

Convention at Wichita's Century II Convention Center. For more information please visit: [USA Registration Information](#)

February 9-10, 2005 - Kan-ed Vendor Showcase at the Century II Convention Center in Wichita KS. For more details on registration go to links in "Kan-ed Announcements" above.

March 30-April 1, 2005 - Tri-Conference 2005 - The Tri-Conference represents the combined efforts and resources of the Kansas Library Association, Kansas Association of School Librarians, and the Kansas Association for Educational Communications and Technology to bring you outstanding programming, speakers, and professional activities. For more information go to: <http://skyways.lib.ks.us/tricon/2005/>

Spring, 2005 - Kan-ed Ribbon Cutting Event - celebrating the launch of the Kan-ed Network being held at the Kansas State Capital Rotunda in Topeka. Date TBA soon.

June 15-17, 2005 - Kan-ed Annual Membership Conference - (Featuring Tom Peters, guest speaker) at the Century II Convention Center & The Hotel at Old Town Conference Center in Wichita, KS. For more details go to <http://conference-kan-ed.org>

1000 SW Jackson, Suite 510
Topeka, Kansas 66612
785-296-0843 phone 785-296-7052 fax

Terms and Conditions.
© 2004 Kansas Board of Regents. All rights reserved.

The logo for Kan-ed, featuring the text "Kan-ed" in a large, bold, serif font. The "ed" is slightly smaller and positioned to the right of "Kan".

Where Kansans Access the Information Age

[About Kan-ed](#)[Kan-ed Communities](#)[Kan-ed Services](#)

Welcome to Kan-ed

[About Kan-ed](#)

[News and](#)

[Events](#)

[Services](#)

[Governance](#)

[Membership](#)

[Links](#)

[Contacts](#)

Kan-ed Services

This page summarizes services provided by or planned by the Kansas Board of Regents via the Kan-ed network.

Network Services

Kan-ed Backbone (Network) - Kan-ed has constructed and operates a high-quality private backbone network within Kansas. This backbone network consists of some 19 Network Access Points (NAPs) spread across the state connected with high speed communications lines. Kansas commercial communications providers connect to these NAPs to bring traffic from Kan-ed member institutions and relay traffic destined for sites on the commercial Internet. Traffic between connected Kan-ed members can traverse the Kan-ed backbone instead of the commercial Internet.

Kan-ed members can get connected to Kan-ed simply by filling out the "Service Initiation Form." [Service Initiation Form](#)

Kan-ed operates a Network Operations Center to monitor, manage and develop the Kan-ed backbone network, and conducts continuous evaluation of services provided by Kan-ed and the Kan-ed NOC.

Kan-ed also conducts special projects (such as the Pioneer Health Net project) to investigate and encourage new network configurations and applications.

Internet2 access - Connected Kan-ed members have direct, high-speed access to Internet2, and through Internet2 to any of the over-150 institutions of higher education and research connected to Internet2. ("Internet2" is the most common name used to describe the University Consortium for Advanced Internet Development (UCAID) and/or the "Abilene" network operated by that consortium.)

Video Services

Kan-ed is legislatively directed to assess the need for network-based video tools. To that end, Kan-ed provides a variety of video services:

Classroom instruction - Kan-ed currently serves as a platform for classroom video instruction. As of late 2004, well over 100 connected

Kan-ed members have used Kan-ed to teach several hundred classes.

Point to Point Videoconferencing - IDL is not the only function of the video network. Single event video conferences are also a function of the Kan-ed network as well. The network is secure, offering HIPPA compliance amongst its list of compliances in order for hospitals to carry out remote patient to doctor diagnostics. Another example would be a library needing to facilitate a video conference for patrons.

Multipoint video conferencing and video-enhanced collaboration - Kan-ed operates a Multipoint Conferencing Unit for H.323 users who wish to include multiple participants in video conferences, and is currently evaluating other approaches to multipoint conferencing and collaboration.

Point-to-multipoint broadcasting - Kan-ed has contracted to provide Internet video streaming for events of importance to the Kan-ed community. This service, Kan-edLive!, provides streaming video of live events and archives the video record. In addition, Kan-ed is currently evaluating alternative approaches to provide point-to-multipoint services.

Access to Online Services

Sprint Empowered Desktop - The Empowered EducationSM Desktop (EED) with its partnership with LearningStation®, provides students and teachers access to education's most comprehensive suite of instructional programs, software content, and professional development programs. With EED, educators can choose from more than 12,000 applications from 75 content publishers. Launch any application in the school through the Empowered Education Desktop portal. To learn more [click here](#).

Educational & Research Databases - Kan-ed purchased five database products highly ranked in an electronic database trial conducted by the State Library. Those negotiated and purchased were: WorldBook Encyclopedia, ProQuest Heritage Quest, Gale Literature Resource Center, Gale InfoTrac Custom Newspapers, and ProQuest Nursing Journals. That databases are available to anyone in Kansas using a computer either using the Kansas Library Card or IP authentication. The card is easily obtained from any library, free of charge, or you may contact Kan-ed staff for IP authentication information.

Connected Kansas Kids - Connected Kansas Kids is a project co-sponsored by Kan-ed, the Kansas University Center for Telemedicine and Telehealth of the Kansas University Medical Center (KUMC) and Unified School District (USD) 500 of Wyandotte County, Kansas. It was conceptualized as a way to use technology and the technological infrastructure in Kansas to extend the work with kids that suffer from a chronic illness, their classmates, and their loved ones across the state.

Kansas Digital Library - Mission: To create a multi-faceted database of uniquely Kansas historical, scientific, and cultural information and images for the support of education and scholarly research, accessible to all Kansans, indeed, to all who have access to the Internet. [Click here to access Territorial Kansas Online.](#)

1000 SW Jackson, Suite 510
Topeka, Kansas 66612
785-296-0843 phone 785-296-7052 fax

Terms and Conditions.
© 2004 Kansas Board of Regents. All rights reserved.



FilterLogix

“Driving Innovation In Filtering”



Agenda

- FilterLogix – Who We Are
- The Technology
- Web Filtering – Trends & Challenges
- URL List and Key Word Filters
- Intelligent Content Manager (iCM) Solution Overview
 - Local Server
 - ASP
- Value to End User
- Coming Soon



FilterLogix – The Company

- Founded In March Of 2000
- Headquarters – Lawrence, Kansas
- Focus: Internet Access Control / Web Filtering
- Technology: Next Generation Filtering Technology
- Over 200,000 Active Users – And Growing!



The Technology – Rough Sets

Definition – An Artificial Intelligence (AI) method for improving the decision making process by harvesting greater and more valuable knowledge from databases by overcoming imperfections, errors, incomplete, imprecise and vague data for the purposes of creating knowledge in the form of rules to answer user specified questions.



The Challenges With Conventional Technology ...

Web Content Filtering

- The Rapid Growth Of The Internet - Over 3 Billion Websites
- Pornography On The Internet Is Now A Serious Problem!!
- Existing Technology Is Inefficient (Lists/Keyword Blocking)
- Too Many False Positives
- Administration Is A Major Headache
- Increasing Cost Of Ownership



Facts About Pornography and the Internet

Internet Porn Statistics

Pornographic websites	4.2 million (12% of total websites)
Pornographic pages	372 million
Daily pornographic search engine requests	68 million (25% of total search engine requests)
Daily pornographic emails	2.5 billion (8% of total emails)
Average daily pornographic emails/user	4.5 per internet user
Monthly Pornographic downloads (Peer-to-peer)	1.5 billion (35% of all downloads)
Daily Gnutella "child pornography" requests	116 thousand
Websites offering illegal child pornography	100 thousand
Sexual solicitations of youth made in chat rooms	89%
Youths who received sexual solicitation	20%
Worldwide visitors to pornographic web sites	72 million annually



Facts About Pornography and the Internet

Children's Internet Porn Statistics

Average age of first Internet exposure to pornography	11 years old
Largest consumer of Internet pornography	12-17 age group
15-17 year olds having multiple hard-core exposures	80%
8-16 year olds having viewed porn online	90% (most while doing homework)
7-17 year olds who would freely give out home address	29%
7-17 year olds who would freely give out email address	14%
Children's characters linked to thousands of porn links	26 (including Pokeman and Action Man)



FilterLogix ICM for ISA Server



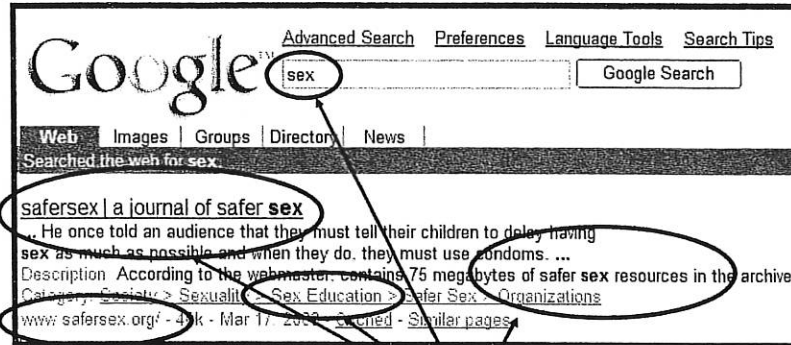
- Microsoft ISA Server Plug-In
- AI Based Technology
- Employee Internet Access Control
- Filtering Accuracy – 99%
- Highly Scalable
- No URL List Required!
- Robust Reporting
- Easy To Install

Content Filtering
that really works!

Powered By:



How It Works



- Real Time Evaluation/ Understanding the Content/ New Decision on each Request



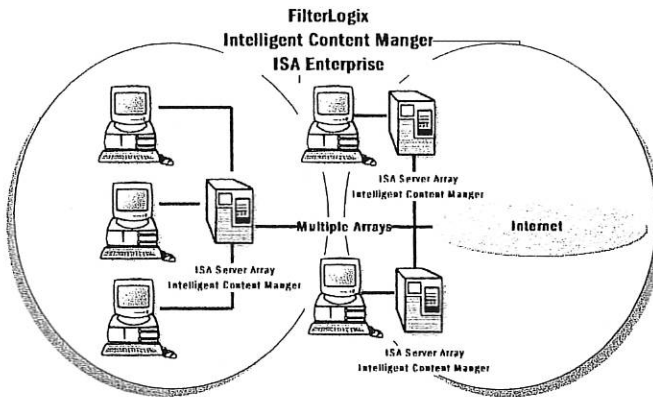
Other Categories and Features

- Hate/Racism
- Bomb Making
- Financial
- Sports
- Online Auctions
- Games*
- Music*
- Chat

... And Beyond



Intelligent Content Manager – How It Works...

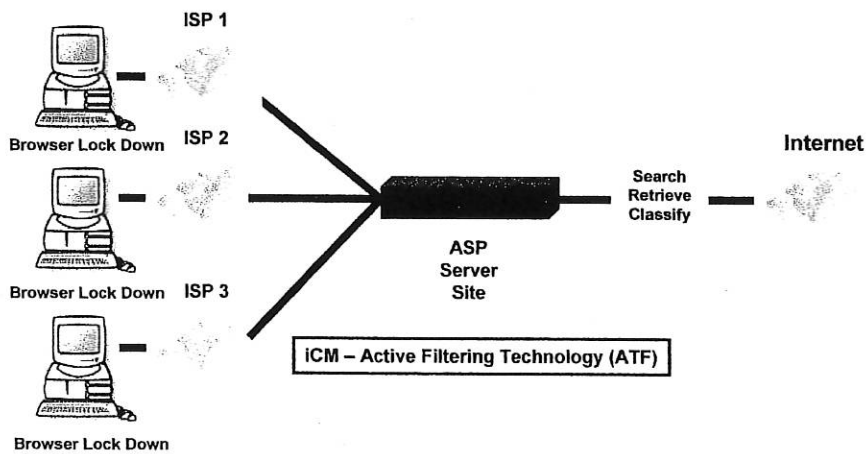


Intelligent
ContentManager

INFORMATION
SECURITY
HOT PICK

FilterLogix

Intelligent Content Manager - ASP



FilterLogix

How It Works



FilterLogix

Inappropriate Material

The requested page contains inappropriate material. The page will not be shown and the request has been logged.

Username:
Password:

Quick Key:



Customer Reaction

The Search for the Perfect Internet Filter- Multi Media Schools

“ Any acceptable filtering product must inspect and analyze each Web page as it is being accessed. Products that only use URL and word lists are destined to have high false negative and false positive results.”

“ By using AI technology, the product (iCM) is capable of reaching a level of filtering accuracy previously unknown in the industry.” -

*Ron Young – Director of Educational Technology Service
USD 470 Arkansas City, Kansas*



Potential Value

- Meet Federal Regulation
- Accurately Monitor/Filter Internet Content
- Localize Administration Decisions
- Reduce Liability
- Reduce Total Cost of Ownership



Interesting Quote – Future Of Content Filtering

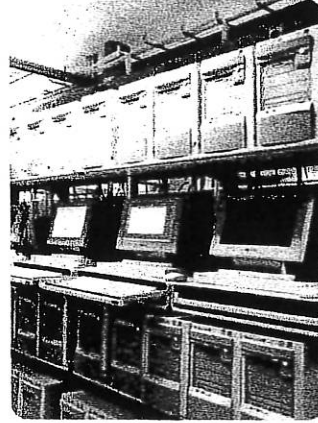
“...the application of Artificial Intelligence is in its infancy. This type of computer-based decision making technology will proliferate by the major market players, and become the future of content filtering.” Source: Frost & Sullivan – July 2003

FilterLogix is already there.....!!!



Coming Soon

- Malware
- Adware
- Spyware
- Pop Ups



**Thanks For Your
Consideration!**

