

MINUTES OF THE HOUSE APPROPRIATIONS COMMITTEE

The meeting was called to order by Chairman Melvin Neufeld at 9:00 a.m. on February 25, 2004 in Room 514-S of the Capitol.

All members were present.

Committee staff present:

J. G. Scott, Legislative Research
Amy VanHouse, Legislative Research
Michele Alishahi, Legislative Research
Audrey Dunkel, Legislative Research
Jim Wilson, Revisor of Statutes
Mike Corrigan, Revisor of Statutes
Nikki Feuerborn, Administrative Analyst
Shirley Jepson, Committee Secretary

Conferees appearing before the committee:

Joyce Cussimano, Children's Cabinet
Angela Ware, COSMOS Corporation, Bethesda, MD, Smart Start Kansas Evaluator

Others attending:

See Attached List.

- Attachment 1 State Evaluation Progress Report on Smart Start, presented by Angela Ware, COSMOS Corporation

Chairman Neufeld recognized Joyce Cussimano, Children's Cabinet, who explained that the Smart Start Kansas Initiative is a comprehensive early childhood initiative that addresses multi-domain and multi-level needs as identified by local communities. Ms. Cussimano introduced Angela Ware, COSMOS Corporation, Smart Start Kansas Evaluator, Bethesda, Maryland, who presented a State Evaluation Progress Report on the Smart Start Kansas Initiative (Attachment 1). Ms. Ware indicated that an evaluation of the program to identify its strengths and areas that may be problematic, will be completed by the end of the summer.

The Committee voiced concern that the Smart Start Initiative is a duplication of services already available to communities through Head Start and other early childhood programs. Ms. Cussimano noted that the Smart Start program works in partnership with other programs and felt that the Smart Start Initiative fills a gap in community services for early childhood participants. In response to a question from the Committee, Ms. Cussimano stated that forty hours of instruction are required to obtain a Child Development Associate (CDA) degree and the participants are usually required to work a full-time job.

Responding to another question, Ms. Ware indicated that the Smart Start Initiative is collaborating with other entities, including communities, public school, public libraries, Head Start and other childhood programs. The Committee noted that they felt there should be research toward merging the administration of the early childhood programs into one coordinating council to better serve the children. The Committee voiced concern that the early childhood programs are not addressing the needs of the total population of the State, particularly in the rural areas of the State.

The meeting was adjourned at 9:45 a.m. The next meeting will be on the call of the Chair or at 9:00 a.m. on March 3, 2004 .



Melvin Neufeld, Chairman

HOUSE APPROPRIATIONS COMMITTEE

February 25, 2004

9:00 A.M.

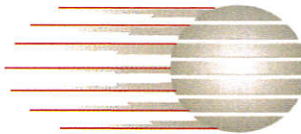
NAME	REPRESENTING
Joyce Cussimano	KS CHILDREN'S CABINET
Angela Ware	COSMOS Corporation
Jim Tolman	KS children cabinet
Cindy D'Ercole	Kansas Action for Children
Shari Kibbe	Herington, KS
Doug Bowman	Coordinating Council on Early Childhood



Kansas Children's Cabinet and Trust Fund Smart Start Kansas Initiative

State Evaluation Progress Report

Angela Ware, Ph.D.
COSMOS Corporation



Topeka, Kansas

FEB 25 2004

HOUSE APPROPRIATIONS

DATE 2-25-2004

ATTACHMENT 1

Smart Start Kansas Initiative

Smart Start Kansas is a comprehensive early childhood initiative that addresses multi-domain and multi-level needs as identified by local communities.

■ Program Activities Address

Five Core Service Areas:

1. Quality of early childhood education;
2. Availability of early childhood education;
3. Affordability of early childhood education;
4. Child health; and
5. Family support

■ Multiple Levels of Focus:

1. Children
2. Parents/Families
3. Early Childhood Professionals
4. Child Care Centers/Preschools

Smart Start Kansas is a Unique Initiative.

■ Outcomes Based and Research Driven.

- Grantees must implement *research-based* program activities that have shown evidence of positive outcomes for children aged 0-5.
- Grantees define annual goals for *short-term programmatic outcomes*.
- *Intermediate outcomes* are community-level improvements in early childhood core service areas.
- *Long-term outcomes* are improved school readiness scores among Kansas children entering Kindergarten.

■ Grounded in Local Collaboration.

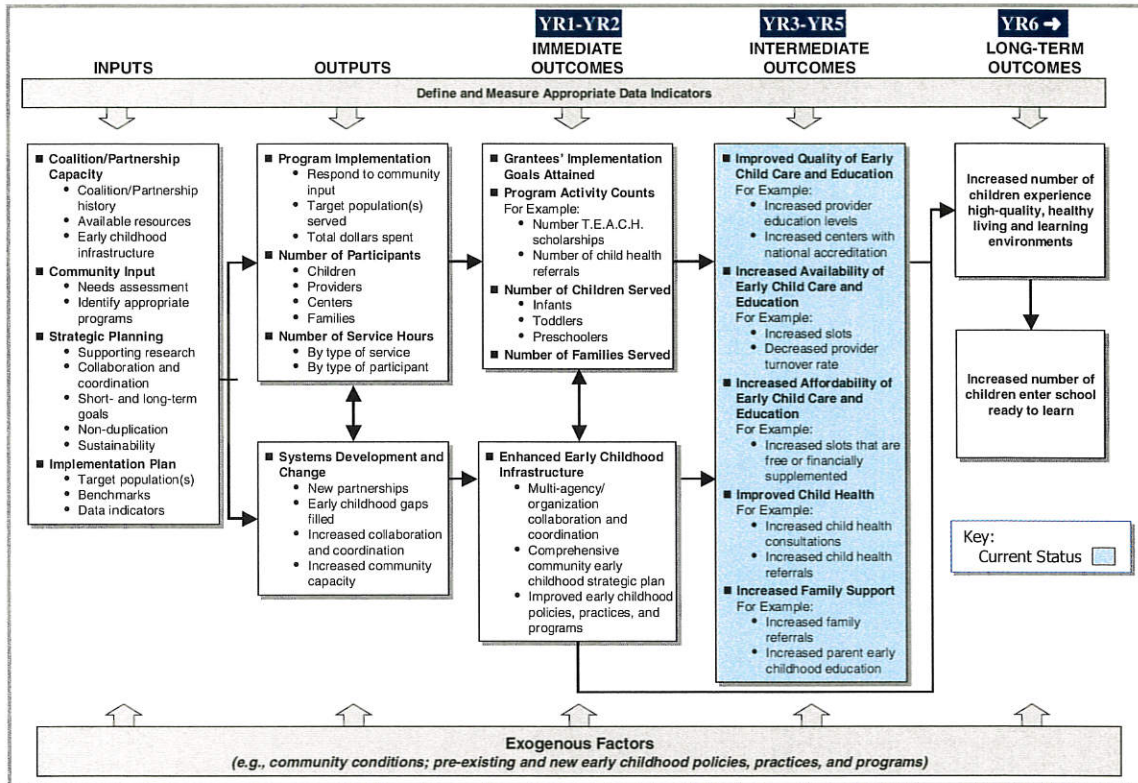
- The initiative demands *local organization and collaboration* among a diverse mix of representatives from the early childhood system and broader community.
- Local coalitions and partnerships conduct community early childhood *needs assessments*, identify *significant gaps* and areas of need, and conduct *strategic planning* to identify appropriate programs and activities to implement in their communities.

■ Community Specific.

- The premise of Smart Start Kansas is that communities should collaboratively identify and address the *unique early childhood needs* of their communities while all grantees work toward a common set of outcomes.
- Although the expected outcomes are the same for all grantees, the Smart Start Kansas programs and activities that are implemented *vary among the grantees* based on community-defined and community-specific needs.
- Grantees are not prescribed “canned” programs to implement, rather such programs when implemented are often *adapted and customized* for particular needs and resources of the local community.

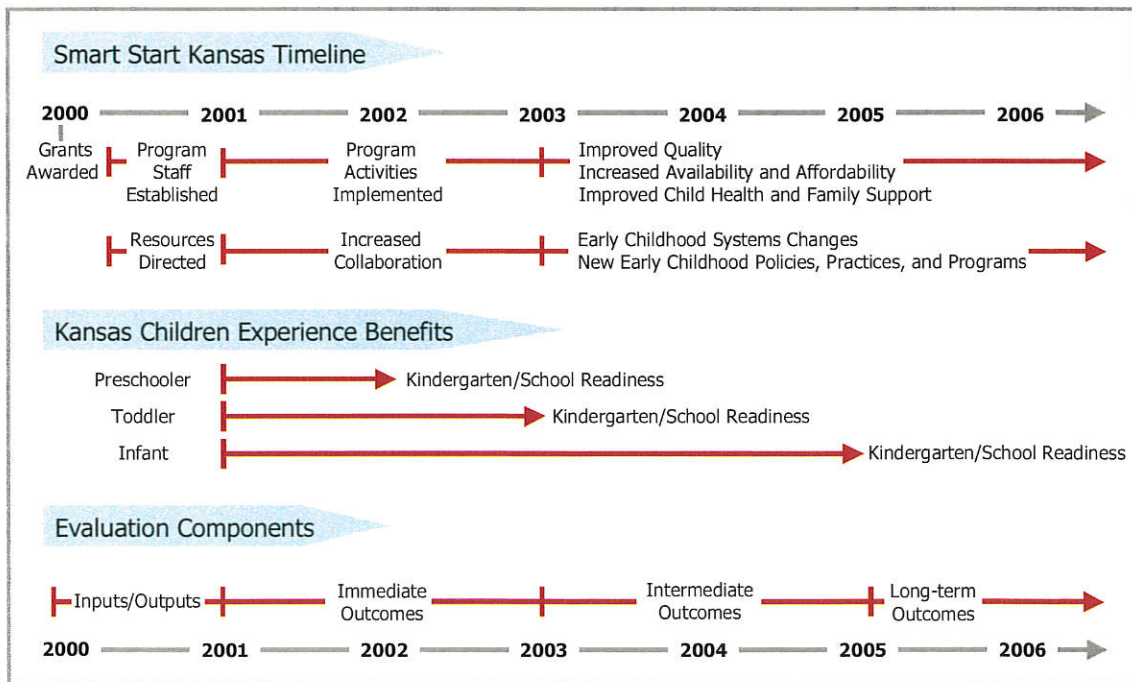
Smart Start Kansas Initiative

Smart Start Kansas Program Logic Model for Cross-Site Analysis



Key: Current Status

The Necessity and Importance of a Multi-Year Evaluation



1-3

Improving Quality of Early Childhood Education for Kansas Children

Highlighted Outcomes

- **Smart Start Kansas is Increasing Education Levels of Early Childhood Professionals^{1, 2}**
 - 48 early childhood educators have **received Child Development Associate (CDA) credentials** (62 early childhood professionals are currently working toward a CDA)
 - 13 early childhood professionals have **obtained an Associate's degree** in Early Childhood Education (109 early childhood professionals are currently working toward an AA)
 - 22 early childhood centers/preschools and family home care providers have **received national accreditation** (30 centers/preschools and family home care providers are currently working toward national accreditation)
 - 5,383 hours of **early childhood trainings and workshops** have been supported, facilitated, or provided by Smart Start Kansas to early childhood educators

- **Smart Start Kansas is Decreasing Turnover Rates of Early Childhood Professionals Through Wage Compensation¹**
 - In Kansas City, the average annual turnover rate for participating early childhood directors and teachers has decreased from **45 percent** (prior to Smart Start Kansas) to **22 percent** (in 2002) to **5.5 percent** (in 2003³).
 - In Salina, the average annual turnover rate for early childhood professionals has decreased from **154 percent** (prior to Smart Start Kansas) to **56 percent** (in 2002) to **13 percent** (in 2003). Moreover, among those early childhood educators who reported leaving their positions for reasons related to career improvement (e.g., seeking higher salary), the turnover rate has dropped from **24 percent** (in 2002) to **5 percent** (in 2003).
 - In Crawford County, the staff average annual turnover rate at The Center has decreased from **60 percent** (prior to Smart Start Kansas) to **6 percent** (in 2002) to **0.03 percent** – only one individual left her position (in 2003).

- **In 2003, more than half of early childhood professionals⁴ reported the following significant benefits from Smart Start Kansas that resulted in improved quality of care:^{2,5}**
 - Opportunities to increase education level
 - More developmentally appropriate lesson plans
 - Increased knowledge of child development (physical, social, and cognitive)
 - More nutritious menus
 - Increased knowledge of safe, healthy, and child-appropriate environments
 - Increased morale and pride related to my profession

¹ Data Source: Grantees' Quarterly Reports.

² 2003 data are not shown for Kansas City.

³ Does not include Kansas City data for the full year.

⁴ N=307 center/preschool directors, classroom teachers, and home care providers.

⁵ Data Source: Smart Start Kansas Early Childhood Provider Survey.

Providing Resources to Improve Quality of Early Childhood Education for Kansas Children

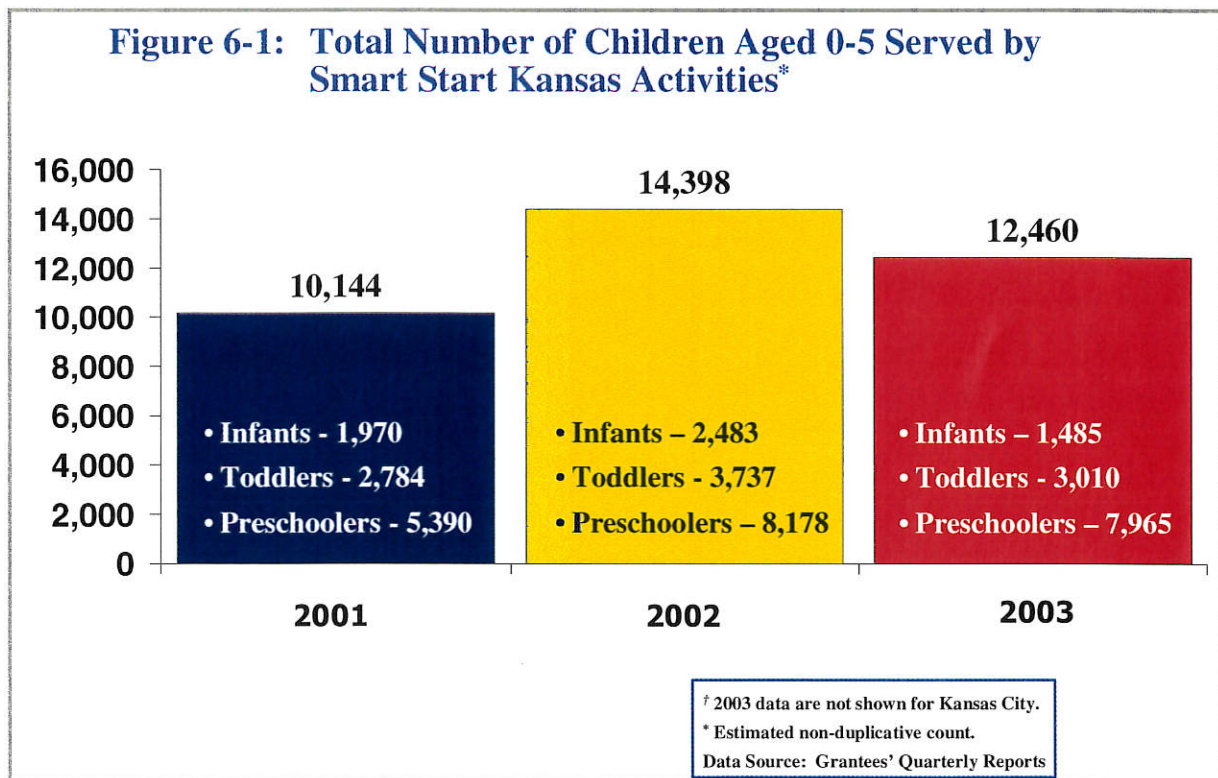
Early Childhood Professionals Report That Smart Start Kansas Provides the Necessary Resources to Improve Quality of Early Childhood Education

- In 2003, **more than half** of early childhood professionals¹ reported **benefitting from resources** provided by Smart Start Kansas that improve quality:²
 - Enhanced compensation (e.g., WAGES) that rewards higher education levels and years of professional experience
 - Early childhood training workshops
 - Financial support to attend early childhood trainings
 - On-site consultation or assistance from a Smart Start-funded specialist such as an early childhood specialist, mental health specialist, family resource specialist, or behavioral/developmental specialist.
 - Educational resources (such as professional materials, age-appropriate toys and books) through a lending library

¹ N=307 center/preschool directors, classroom teachers, and home care providers.

² Data Source: Smart Start Kansas Early Childhood Provider Survey.

Evaluation Results to Date, December 31, 2003



**Early Childhood Collaborative Accomplishments
and Systems Changes in 2003**
(New Early Childhood Policies, Practices, and Programs)

- **Smart Start of North West Kansas (Colby)**
 - Smart Start Kansas Coalition Helps Broaden Focus of the Local Early Childhood Coordinating Council
 - Early Childhood Education Issues are Prominent at Local “Health and Wellness” Fairs
 - Smart Start Coalition Members are Key Players in the Community’s “Drug Endangered Children” Pilot Program
 - In Collaboration with the Eleven Health Departments in the Service Area, the Coalition Developed and Disseminated Smart Start Kansas Educational Materials to New Early Child Care Providers
 - Coalition Reduced the Number of T.E.A.C.H. Scholarships and Added New “Smart Start Scholarships” that Better Match the Educational Needs of the Local Child Care Providers
- **Crawford County Smart Start (Pittsburg)**
 - Smart Start Kansas Coalition Helps Reduce Barriers Between the Early Childhood System and Undocumented Parents of Children Aged 0-5
 - Smart Start Kansas Leverages New Funds and Improves Health Care Delivery System for Children
 - Gap in Early Childhood Parent Education is Collaboratively Addressed
- **Success By 6 Coalition of Douglas County (Lawrence)**
 - Multi-agency collaborative strategic planning results in expansion of the Smart Start Family Resource Team
 - Smart Start leadership and staff are instrumental in collaboratively garnering available resources for a new early childhood center
 - Smart Start Kansas Framework Allows More Effective and Efficient Use of (Non-Smart Start) Early Childhood Funding and Resources
 - Available Space is Utilized for Needed Child Care Services
- **Raising Riley Smart Start (Manhattan)**
 - Early Childhood Coalition Task Force Coordinates Activity Calendar during “The Week of the Young Child”
 - Early Childhood Coalition Task Force Identifies and Addresses Gaps for Middle-Income Families
 - Early Childhood Coalition Task Force Established Training Program for New Parents at Hospital
 - Smart Start Kansas Provides 20 Scholarships for Children Living in Poverty
 - Early Childhood Educators are Recognized for Incremental Quality Improvement
- **Smart Start of Saline County (Salina)**
 - Chamber of Commerce Makes Early Childhood Education a Top Priority
 - Accreditation Program Expanded to Include Home Care Providers
 - Early Childhood Receives Substantial Resource Allocations
 - Utilization and Reach of Early Childhood Specialist is Increased
 - Memoranda of Understanding Issued to Smart Start Kansas Participants
- **Tri-County Smart Start Kansas Coalition (Kansas City)**
 - Early Childhood Systems Develops a New Vision
 - Measures of Quality Early Childhood Education Expanded
 - Media Coverage Highlights Smart Start Kansas
 - Thank You Campaign Conducted for a Senator and the Governor
- **Smart Start Wichita (Wichita)**
 - Smart Start Kansas Adapts Early Childhood Program Materials to Meet the Needs of Community Members
 - Smart Start Kansas is Identifying and Offering Assistance to Home Care Providers Who are Not Licensed
 - Partnership Expands Standards of Quality for Smart Start Kansas Providers

Data Sources: Grantees’ Quarterly Reports; Smart Start Kansas Collaboration Survey; and Site Visit Interviews.