

MINUTES OF THE HOUSE COMMITTEE ON ENVIRONMENT.

The meeting was called to order by Chairperson Representative Joann Freeborn at 3:30 p.m. on January 21, 2003 in Room 231-N of the Capitol.

All members were present except: Representative Dan Thimesch - excused

Committee staff present: Raney Gilliland, Legislative Research
Mary Torrence, Revisor of Statutes
Mary Ann Graham, Secretary

Conferees appearing before the committee: Kent Lamb, Chairman, Kansas Water Authority, RR1 Box 69,
Macksville, Kansas 67557
Clark Duffy, Director, Kansas Water Office, 901 SW Kansas
Ave. Topeka, KS 66612-1249

Others attending: See attached sheet

Chairperson Joann Freeborn called the meeting to order at 3:30 p.m. She reviewed the committee agenda for Thursday, January 23. The Kansas Agricultural Remediation Board will give an overview of the history of the Remediation Board and annual report. Maurice Korphage, Director, Conservation Division, Kansas Corporation Commission, will give an update on Well Plugging and Remediation Activities. Also bill introductions.

The Chairperson asked if anyone had a bill request at this time. No one came forward.

Chairperson Freeborn welcomed Kent Lamb, Chairman, Kansas Water Authority, to the committee. He presented an overview on water issues. The Kansas Water Office and the Kansas Water Authority were established in 1981. The Kansas Water Office with 22.5 employees is the water planning, policy, coordination and marketing agency for the state. The Kansas Water Authority is statutorily within and a part of the Kansas Water Office. It advises the Governor, Legislature, and Director of the Kansas Water Office on water policy issues. The Kansas Water Authority is responsible for approving water storage sales, the State Water Plan, federal contracts, regulations and legislation proposed by the Kansas Water Office. The key responsibilities of the Kansas Water Authority are: (1) Consult with and be advisory to the Governor, Legislature and Director of the Kansas Water Office on water management issues. (2) Review plans of any state or local agency related to the water resources of the state. (3) Study laws related to water resources management issues and make recommendations on such issues to the Governor and Legislature. (4) Make recommendations to other state agencies and political subdivisions of the state for the coordination of their activities related to water resources management. (5) Review and furnish recommendations to the Governor and Legislature on program plans pertaining to the state's water resource of any agency of the state. (See attachment 1)

The Chairperson welcomed Clark Duffy, Director, Kansas Water Office. He introduced Gerald Blaine, Kansas Water Authority; Tracy Streeter, Director, Conservation Commission; Don Paxson and Craig Gibson, Kansas Water Authority; Ken Grotewiel, Assistant Director, Kansas Water Office, and Margaret Fast, Manager, Planning Unit, KWO, who were in attendance. Mr. Duffy gave an overview on water issues. The Mission and Responsibilities of the Kansas Water Office and the Kansas Water Authority are: (1) To coordinate the water resource operations of agencies at all levels of government, and to achieve pro-active solutions for water resource issues of the state. (2) Develop a State Water Plan for the management, conservation, and development of the water resources of the state. (3) Consult with and be advisory to the Governor and Legislature. (4) Study and make recommendations on any law, plan or budget estimate pertaining to the State's water resources. (See attachment 2) Committee questions and discussion followed.

Chairperson Freeborn thanked Mr. Lamb and Mr. Duffy for their presentations and the committee and guests for their attention.

The meeting adjourned at 4:50 p.m. The next meeting is scheduled for Thursday, January 23, 2003.

HOUSE ENVIRONMENT COMMITTEE GUEST LIST

DATE: January 21, 2003

NAME	REPRESENTING
Ben Hippen	Ks Dairy Assoc
Eric Collins	Ks Govt Consulting
Marsha Strubbs	
Jerry Blain	Kansas Water Authority
Andy Shaw	SWKIA
Wendy M. Adams	KAPA
George Barber	Ks Consulting Engrs
Lucas Bell	Rep. Neufeld
Todd Johnson	KLA
Alex A. Katsyants	Geol. Dept. Advisory Council KSD
Julia Hed	Hein Law Firm
Derenda J. Mitchell	KLA
Tom Stattery	AGC / Ks
Brian Shepard	Intern for J. Miller
Craig Gibson	KWA
Janet McPherson	Ks Farm Bureau

KANSAS WATER OFFICE & KANSAS WATER AUTHORITY RESPONSIBILITIES

Fact Sheet No. 3

July 2002

Kansas Water Office

BACKGROUND

The Kansas Water Office and the Kansas Water Authority were established in 1981. The Kansas Water Office with 22.5 employees is the water planning, policy, coordination and marketing agency for the state. The Kansas Water Authority is statutorily within and a part of the Kansas Water Office. It advises the Governor, Legislature and the Director of the Kansas Water Office on water policy issues. The Kansas Water Authority is responsible for approving water storage sales, the State Water Plan, federal contracts, regulations and legislation proposed by the Kansas Water Office.

The primary statutory function of the agency is the development and implementation of the State Water Plan. State law requires the Kansas Water Office to "Formulate on a continuing basis a comprehensive State Water Plan for the management, conservation and development of the water resources of the state. Such State Water Plan shall include sections corresponding with water planning areas as determined by the office." (K.S.A. 74-2608 *et seq.*)

To accomplish this goal, the agency is given further statutory responsibility to:

KEY RESPONSIBILITIES OF THE KANSAS WATER OFFICE

1. Administer the State Water Resources Plan Act. K.S.A. 82a-901 *et seq.*
2. Conduct public water supply planning. (K.S.A. 74-2616)
3. Administer the State Water Plan Storage Act (Water Marketing Program) (K.S.A. 82a-1301 *et seq.*)
4. Administer the Water Assurance Program Act. (K.S.A. 82a-1345 *et seq.*)
5. Manage the State Water Plan Fund. (K.S.A. 82a-951)
6. Administer the Weather Modification Program. (K.S.A. 82a-1411)
7. Coordinate water related activities of state, local and federal government. (K.S.A. 82a-931)

8. Negotiate water related agreements with the federal government. (K.S.A. 82a-915 & 82a-933)
9. Coordinate water related research. (K.S.A. 82a-941)
10. Issue water related revenue bonds. (K.S.A. 82a-1316)
11. Collect and compile information pertaining to the water resources of the state. (K.S.A. 74-2608 *et seq.*)
12. Work out a plan of water resources management, conservation and development for water planning areas in the state. (K.S.A. 74-2608 *et seq.*)
13. Develop and maintain guidelines for water conservation plans and practices. (K.S.A. 74-2608 *et seq.*)
14. Establish guidelines for conditions indicative of drought. When such conditions are met, advise the Governor, and recommend that the Governor's Drought Response Team be assembled. (K.S.A. 74-2608 *et seq.*)

KEY RESPONSIBILITIES OF THE KANSAS WATER AUTHORITY

1. Consult with and be advisory to the Governor, Legislature and Director of the Kansas Water Office on water management issues. (K.S.A. 82a-2622(d)(1))
2. Review plans of any state or local agency related to the water resources of the state. (K.S.A. 82a-26622(d)(2))
3. Study laws related to water resources management issues and make recommendations on such issues and make recommendations on such issues to the Governor and Legislature. (K.S.A. 82a-2622(d)(3))
4. Make recommendations to other state agencies and political subdivisions of the state for the coordination of their activities related to water resources management. (K.S.A. 82a-2622(d)(4))
5. Review and furnish recommendations to the Governor and Legislature on program plans

House Environment
1-21-03
Attachment 1

pertaining to the state's water resource of any agency of the state.

(K.S.A. 82a-26622(d) *et seq.*)

The Kansas Water Authority is also responsible for prior approval of the following: Kansas Water Office contracts related to the State Water Plan storage act; amendments to the State Water Plan on water planning act and other legislation that the Kansas Water Office may propose; pricing of water for sale under the marketing program; federal contracts with the Kansas Water Office; Kansas Water Office proposed rules and regulations; and Kansas Water Office conservation plan guidelines and practices. (K.S.A. 82a-2622(d) *et seq.*)

Kansas Water Authority Membership

The 23-member Kansas Water Authority is comprised of 13 private citizen members and ten ex officio members. The 13 private citizen members serve as follows:

- 1) appointment by the Governor (this member serves as chairperson of the Kansas Water Authority);
- 2) appointment by the President of the Senate;
- 3) appointment by the Speaker of the House of Representatives;
- 4) a representative of large municipal water uses;
- 5) a representative of small municipal water users;
- 6) a board member of western Kansas groundwater management district;
- 7) a board member of a central Kansas groundwater management district;
- 8) a member of the Kansas Association of Conservation Districts;
- 9) a representative of industrial water users;

- 10) a member of the State Association of Watershed Districts;
- 11) a member with a demonstrated background and interest in water use, conservation and environmental issues;
- 12 and 13) two representatives of the general public.

The 10 ex officio members are as follows:

- 1) the State Geologist;
- 2) the Chief Engineer of the Division of Water Resources of the Kansas Department of Agriculture;
- 3) the Secretary of the Kansas Department of Health and Environment;
- 4) the Director of the Kansas Water Office (this member serves as Secretary of the Kansas Water Authority);
- 5) the Director of the Agricultural Experiment Station of Kansas State University;
- 6) Chairman of the Kansas Corporation Commission;
- 7) Secretary of the Kansas Department of Wildlife and Parks;
- 8) the Secretary of the Kansas Department of Commerce;
- 9) the Executive Director of the State Conservation Commission; and
- 10) the Secretary of the Kansas Department of Agriculture. (K.S.A. 74-2622 *et seq.*)

ADDITIONAL INFORMATION

Further information on this and other *Kansas Water Plan*- related programs can be obtained from the Kansas Water Office, 901 S. Kansas Ave., Topeka, KS 66612-1249. Call (785) 296-3185 or toll free (888) KAN-WATER. The Kansas Water Office WEB site is www.kwo.org.

THE KANSAS WATER PLAN

Fact Sheet No. 1

July 2002

Kansas Water Office

The *Kansas Water Plan* is annually updated to document how the state intends to “. . . best achieve the proper utilization and control of the water resources of the state . . .” The *Kansas Water Plan* is prepared in accordance with K.S.A. 82a-901 *et seq.*, the State Water Resources Planning Act.

The Kansas Water Office is the water planning agency for the state, and is mandated under K.S.A. 82a-903 to “formulate on a continuing basis a state water plan for the management, conservation and development of the water resources of the state. Within and a part of the Kansas Water Office is the Kansas Water Authority which is comprised of 23 members.

One of the primary duties of the Kansas Water Authority is to annually approve the *Kansas Water Plan*. Once the *Kansas Water Plan* has been approved, the Kansas Water Office submits it to the Governor and Legislature for implementation.

The *Kansas Water Plan* is formulated and used for the general purpose of accomplishing the coordinated management, conservation and development of the water resources of the state. The Division of Water Resources of the Kansas Department of Agriculture, State Geological Survey, the Division of Environment, Department of Wildlife and Parks, State Conservation Commission and all other interested state agencies cooperate with the office in formulation of the *Kansas Water Plan*. (K.S.A. 82a-903)

PURPOSE

The *Kansas Water Plan* is used to coordinate management, conservation and development of the water resources of the state. The *Kansas Water Plan* sets out to achieve the goals identified in the State Water Resources Planning Act (K.S.A. 82a-901, *et seq.*).

The Kansas Water Authority approved objectives for the year 2010 and 2015 as part of the *Kansas Water Plan*. These objectives will be used

as guidance for assessment of the condition of the water resources of the state; for development of measurable objectives for each basin; and for incorporating site specific information for implementing targeted programs in each basin.

The policy sections of the *Kansas Water Plan* contain an overview of state programs in place to meet the 2010 and 2015 Objectives. The policy sections serve as a guide for new water policy that would be implemented after passage of authorizing legislation and/or budgetary appropriations. The sections also contain recommendations on implementation of programs that have statewide application.

The purpose of the basin sections of the *Kansas Water Plan* is to make recommendations for the operation of state programs that can assist in addressing priority issues and in meeting the 2010 and 2015 Objectives for a basin.

PROCESS

The need to seek public input in the planning process is set out in K.S.A. 82a-903 and states that: “. . . The Kansas Water Office and the Kansas Water Authority shall seek advice from the general public and from committees consisting of individuals with knowledge of and interest in water issues and in the water planning areas.”

The *Kansas Water Plan* is formulated through an established planning process, which emphasizes public participation through basin advisory committees, public meetings and public hearings. Basin Advisory Committees are made up of volunteer citizens located within each of the 12 major river basins in the state to provide advice on formulation and implementation of the Basin Sections of the *Kansas Water Plan*. Each committee has 11 members representing water use categories of municipal, other public water suppliers, domestic, irrigation, industry and recreation, as well as at large members.

IMPLEMENTATION

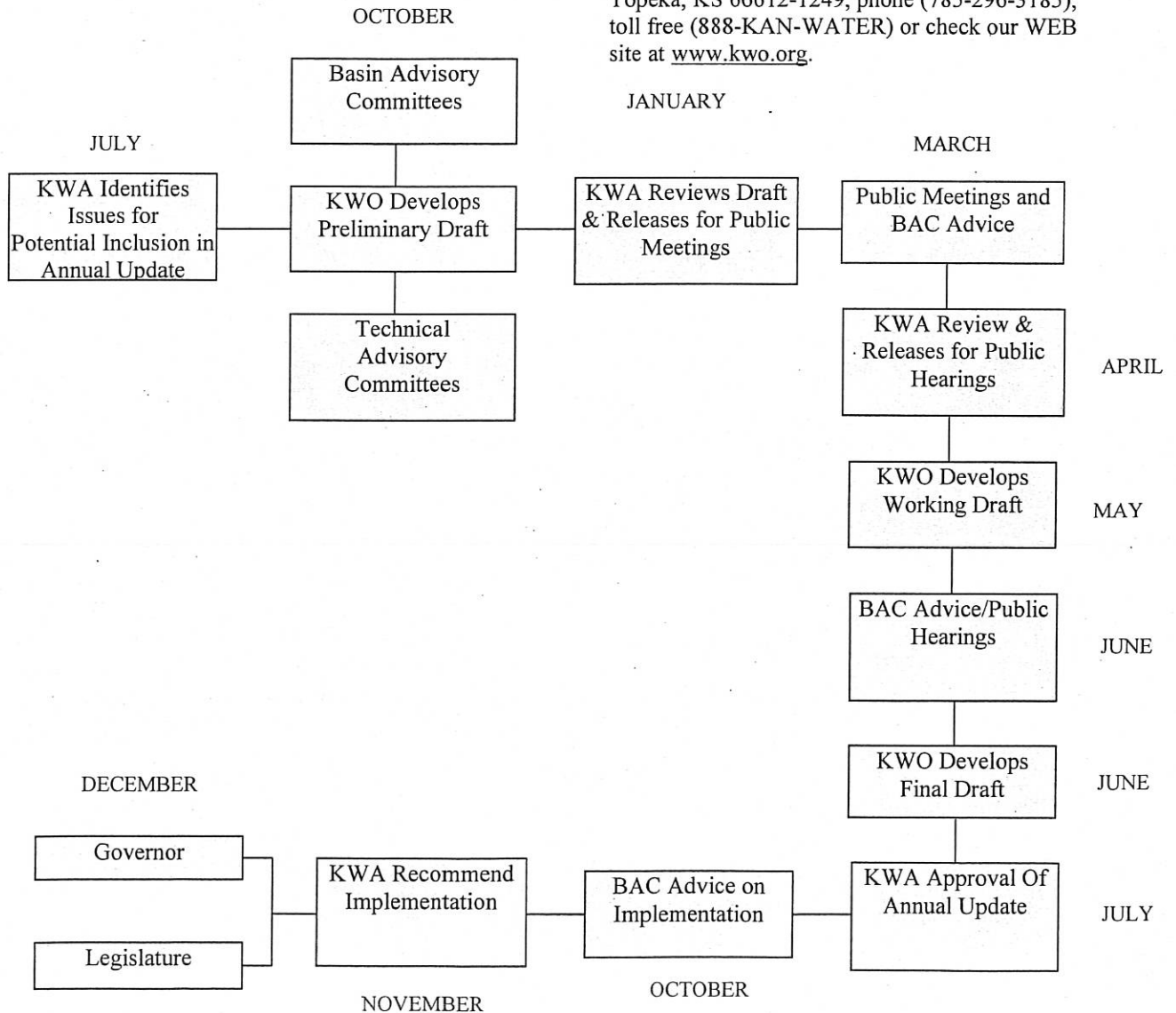
Implementation of the *Kansas Water Plan* is accomplished in part by the passage of necessary legislation and through funding of specific programs or projects. Creation of the State Water Plan Fund in 1989 provided a dedicated source of revenue to supplement funding for implementation of the *Kansas Water Plan*. The *Kansas Water Plan* serves as guidance to the agencies for preparation of budgets to implement the Kansas Water Plan. Following submission of agency budgets in September, the Kansas Water Authority reviews the agencies' requests and prepares recommendations to the Governor and Legislature on actions necessary to implement the Plan, including legislation, coordination and appropriations of money, especially from the State Water Plan Fund (K.S.A. 74-2622(d)).

ASSESSMENT

The Kansas Water Plan 2010 and 2015 Objectives provide a means to quantify the condition of water resources in the state through the assessment of each objective. The assessments will provide valuable information to planners and program managers to target funding and efforts to meet the 2010 and 2015 Objectives. Each completed assessment will be summarized in assessment notebooks for the state and by the basin, and published on the Internet at <http://www.kwo.org>.

ADDITIONAL INFORMATION

Further information on this subject or other Kansas Water Plan related programs can be obtained from: Kansas Water Office, 901 S. Kansas Avenue, Topeka, KS 66612-1249, phone (785-296-3185), toll free (888-KAN-WATER) or check our WEB site at www.kwo.org.



1-4

BASIN ADVISORY COMMITTEES

Fact Sheet No. 4

January 2001

Kansas Water Office

Introduction

The Kansas Water Office is directed to "formulate on a continuing basis, a comprehensive State Water Plan for the management, conservation and development of the water resources of the state. Such State Water Plan shall include sections corresponding with water planning areas as determined by the office" (K.S.A. 82a-903). Major river basins as shown in Figure 1 have been established as the water planning areas for this purpose.

In 1985, K.S.A. 82a-903 was amended as recommended in the *Kansas Water Plan* to require the Kansas Water Office and the Kansas Water Authority seek advice from the general public and from committees consisting of individuals with knowledge of and interest in water issues in the water planning areas. Basin advisory committees were first established in each of the 12 river basins in Kansas on June 28, 1985. The 11-member committee for each basin consists of at least one member representing each of the following six water user categories: domestic; municipal; other public water supplier; industrial; irrigation and recreation, fish and wildlife. The remaining five members are selected based on user category, geographic distribution and other criteria at the discretion of the basin advisory committee.

Employees of state agencies represented by ex-officio members of the Kansas Water Authority are not eligible for membership on basin advisory committees. This does not include individuals associated with organizations represented by voting members on the Kansas Water Authority. Ex-officio agencies assign staff to serve as advisors to each of the basin advisory committees.

Role of the Basin Advisory Committee

The basin advisory committees provide the working link between the Kansas Water Office staff and the public. The committees:

1. Advise the Kansas Water Office and the Kansas Water Authority in identification of water-related problems, issues, and concerns within their basin and the objectives to be used to direct planning efforts in their basin.
2. Advise the Kansas Water Office and the Kansas Water Authority in the formulation of revisions to the Basin Plan for their basin.
3. Advise the Kansas Water Office and the Kansas Water Authority in the determination of *Kansas Water Plan* implementation priorities and actions necessary to implement the Plan in their basin.
4. Advise the Kansas Water Office and the Kansas Water Authority on the promotion of public awareness of the importance of water resources in their basin.
5. Advise the Kansas Water Office and the Kansas Water Authority on any other water-related matter considered to be of importance by the Basin Advisory Committee.
6. Serve as a link to the public in the basin through interaction with various groups and individuals. The committee members also carry information on concerns and issues to citizens in the basin.

Selection Process

All members are nominated by the basin advisory committee from applications on file. The chairperson is nominated by the basin advisory committee from the existing membership. The Kansas Water Authority considers confirmations of all nominations. All members, including the chairperson, serve staggered four-year terms. Terms expire on June 30 of alternate odd years.

Procedures used to fill vacancies on basin advisory committees are as follows:

A. Procedure to fill expired terms.

1. April, odd number years –Basin advisory committee members whose terms are expiring are contacted to determine if they wish to continue serving. All individuals with applications on file will be contacted to determine if they wish to remain on file. If not, their applications will be discarded. Notices are provided to individuals and targeted media on the Kansas Water Office mailing list that applications for basin advisory committee membership are being solicited. Organizations that have membership that would qualify to meet the water user categories may request to be placed on a list to be contacted to encourage applications from their members. This list is reviewed annually by the Kansas Water Office to keep it up to date.

Applications may be received at any time and remain on file until the next renewal process.

2. June – Applications on file at the time of the June basin advisory committee meetings are considered for filling any existing vacancies and the positions of members whose terms are expiring and who do not wish to continue serving as members. Nominations for membership

are forwarded to the Kansas Water Authority for confirmation.

3. July – The Kansas Water Authority reviews all nominations for Basin Advisory Committee Membership and take appropriate action.

B. Procedure to fill unexpired terms.

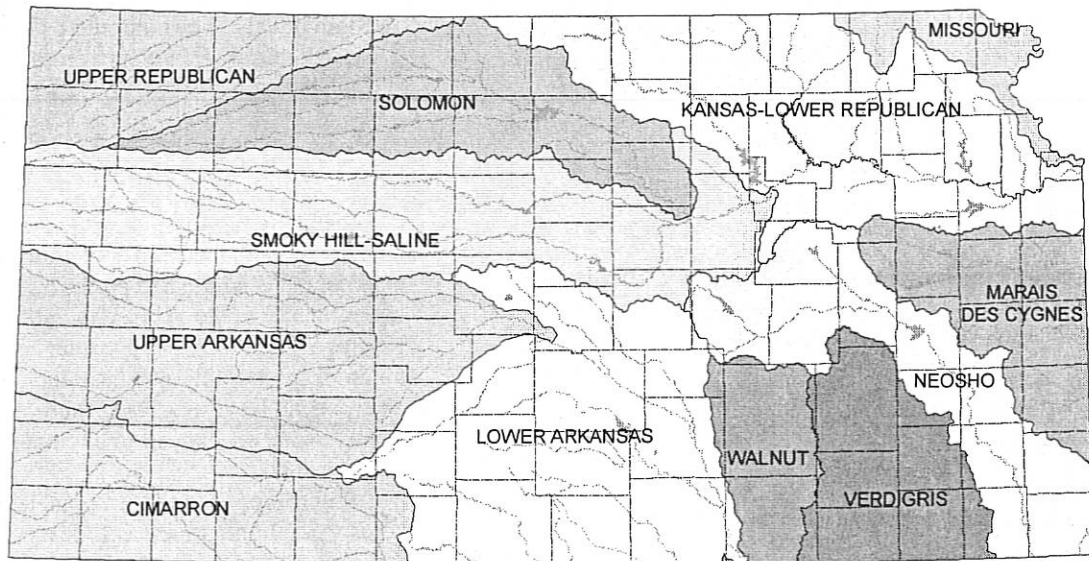
Upon resignation or discontinuation of a basin advisory committee member serving on a committee for any reason, the basin advisory committee shall nominate a replacement to fill the unexpired term from the applications on file. All basin advisory committee nominations are subject to confirmation by the Kansas Water Authority. The Authority may consider Basin Advisory Committee nominations at any meeting.

Additional Information

Fact sheets are also available on the *Kansas Water Plan Purpose & Process* and the Kansas Water Office and the Kansas Water Authority.

Further information on this subject or on many other *Kansas Water Plan* related programs can be obtained from: Kansas Water Office, 901 S. Kansas Avenue, Topeka, KS 66612-1249, phone (785-296-3185), toll free (888-KAN-WATER) or check our WEB site at www.kwo.org.

MAJOR RIVER BASINS IN KANSAS



Kansas Water Office, July 1999
This map intended for planning purposes only.

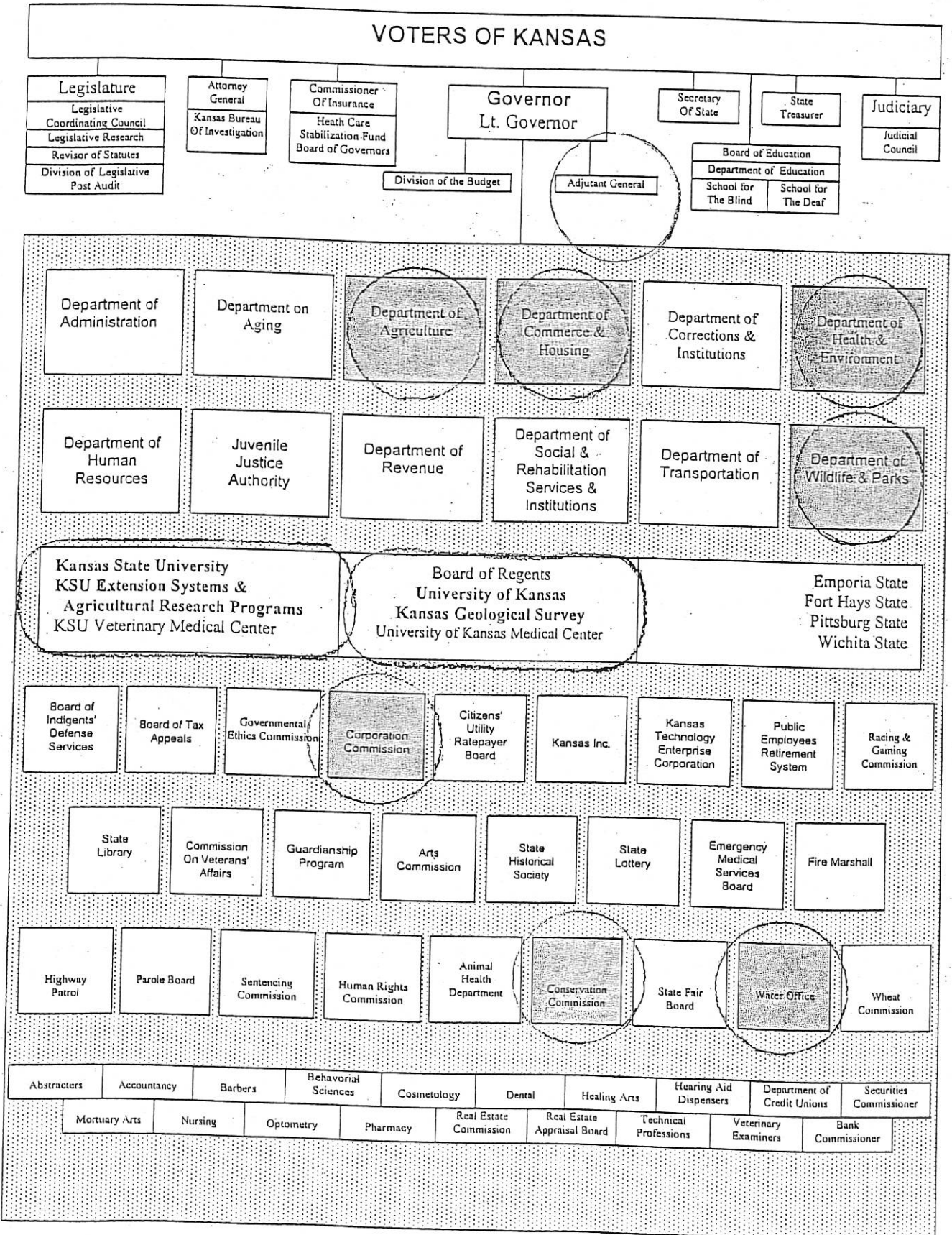
Figure 1

WATER
BRIEFING TO THE
HOUSE ENVIRONMENT COMMITTEE
Clark Duffy, Director, Kansas Water Office
January 21, 2003, 3:30 P.M.

- Organization of Water Agencies
- Water Management Process
- Key Water Issues
- Legislative Issues

*House Environment
1-21-03
Attachment 2*

ORGANIZATION OF STATE WATER AGENCIES



Mission
Kansas Department of Agriculture

To administer assigned laws and programs related to commodity commissions, dairy inspections; agricultural commodities assurance program; meat and poultry inspection; pesticide use; plant protection and weed control; weights and measures; grain warehouse inspection; and water resources.

Mission
KS Dept. of Commerce & Housing

To foster economic development through the promotion of business, commerce and industry.

Mission
KS Dept. of Health & Environment

To optimize the health of Kansans and to preserve, protect, and remediate the natural resources.

Mission
Kansas Corporation Commission

To regulate rates, service and safety of public utilities, common carriers, motor carriers, and regulate oil and gas production.

Mission
Kansas Dept. of Wildlife & Parks

Conserve and enhance Kansas natural heritage, its wildlife and its habitats;
Provide the public with opportunities for the use of the natural resources.

Mission
State Conservation Commission

The State Conservation Commission administers conservation programs designed to enable local entities and individual to protect and enhance Kansas' natural resources.

Mission
KSU – Research & Extension

Dedicated to a safe sustainable, competitive food and fiber system through integrated research, analysis and education.

Mission
Adjutant General

Directs and coordinates state and local government agencies when emergencies and natural disasters strike in the state.

Mission
Kansas Geological Survey

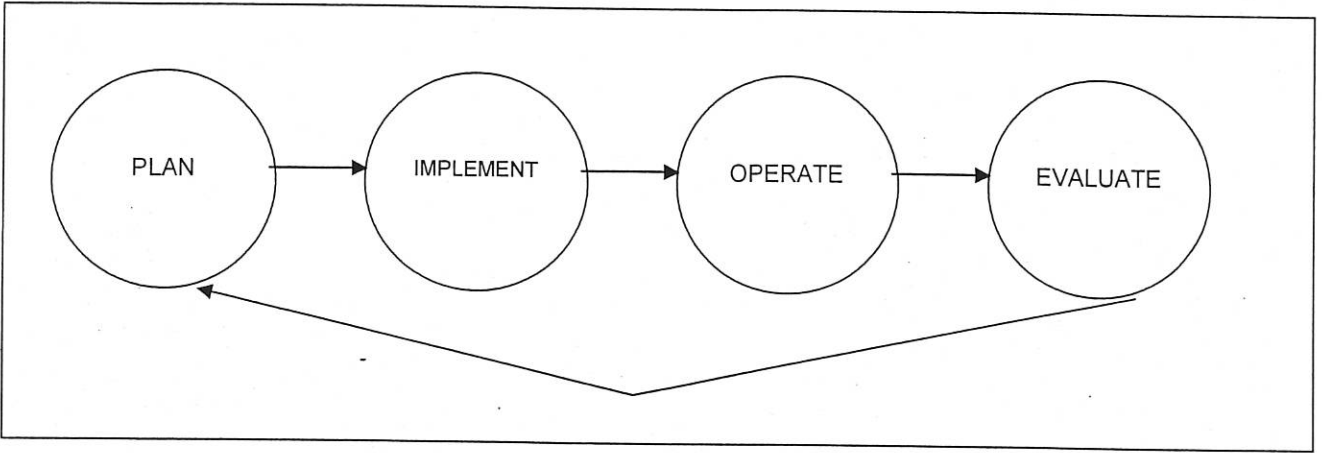
To conduct geological studies and research and to collect, correlate, preserve, and disseminate information.

MISSION & RESPONSIBILITIES

KANSAS WATER OFFICE/
KANSAS WATER AUTHORITY

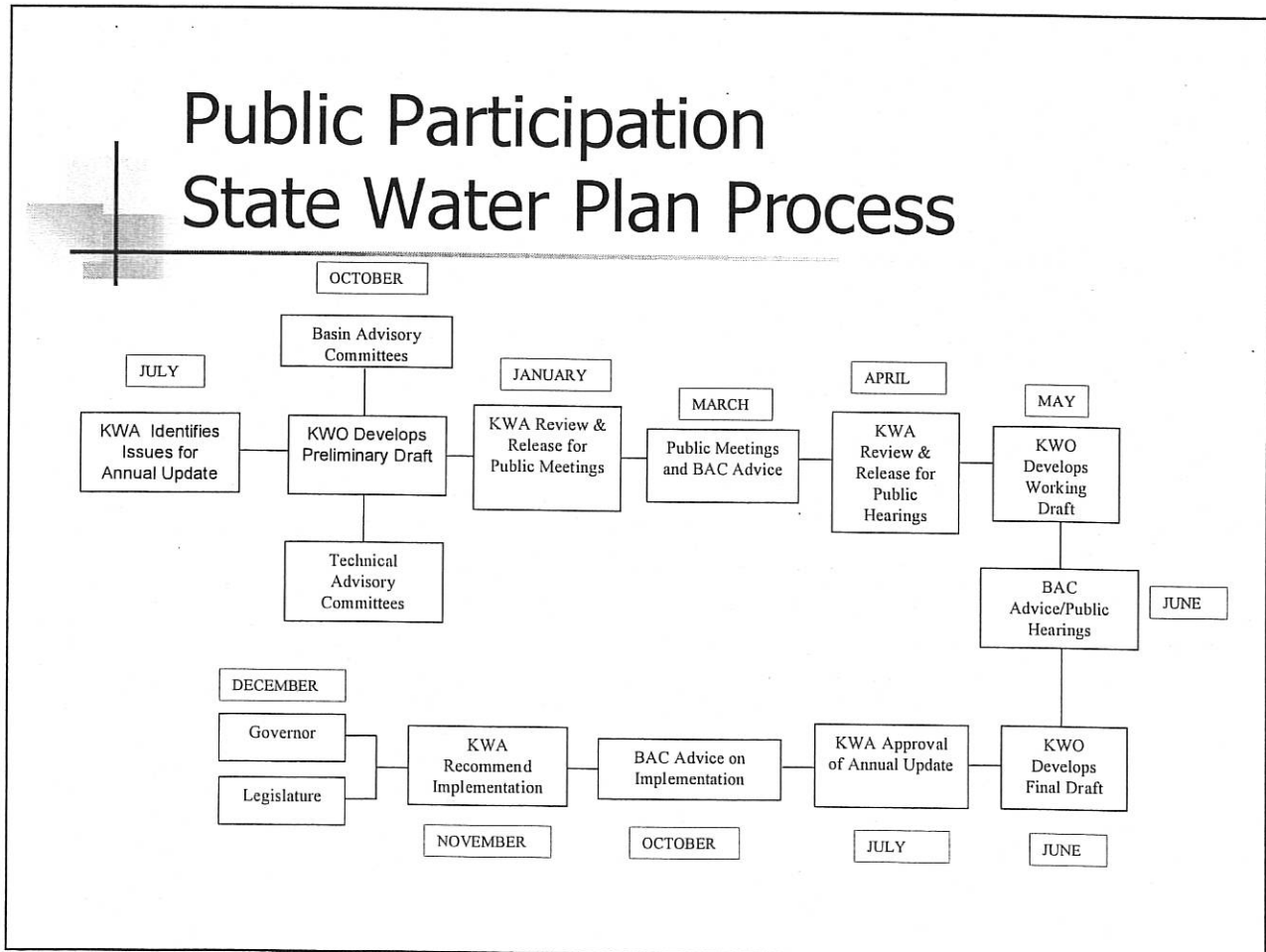
- To coordinate the water resource operations of agencies at all levels of government, and to achieve pro-active solutions for water resource issues of the state.
- Develop a State Water Plan for the management, conservation, and development of the water resources of the state.
- Consult with and be advisory to the Governor and Legislature.
- Study and make recommendations on any law, plan or budget estimate pertaining to the State's water resources.

WATER MANAGEMENT PROCESS



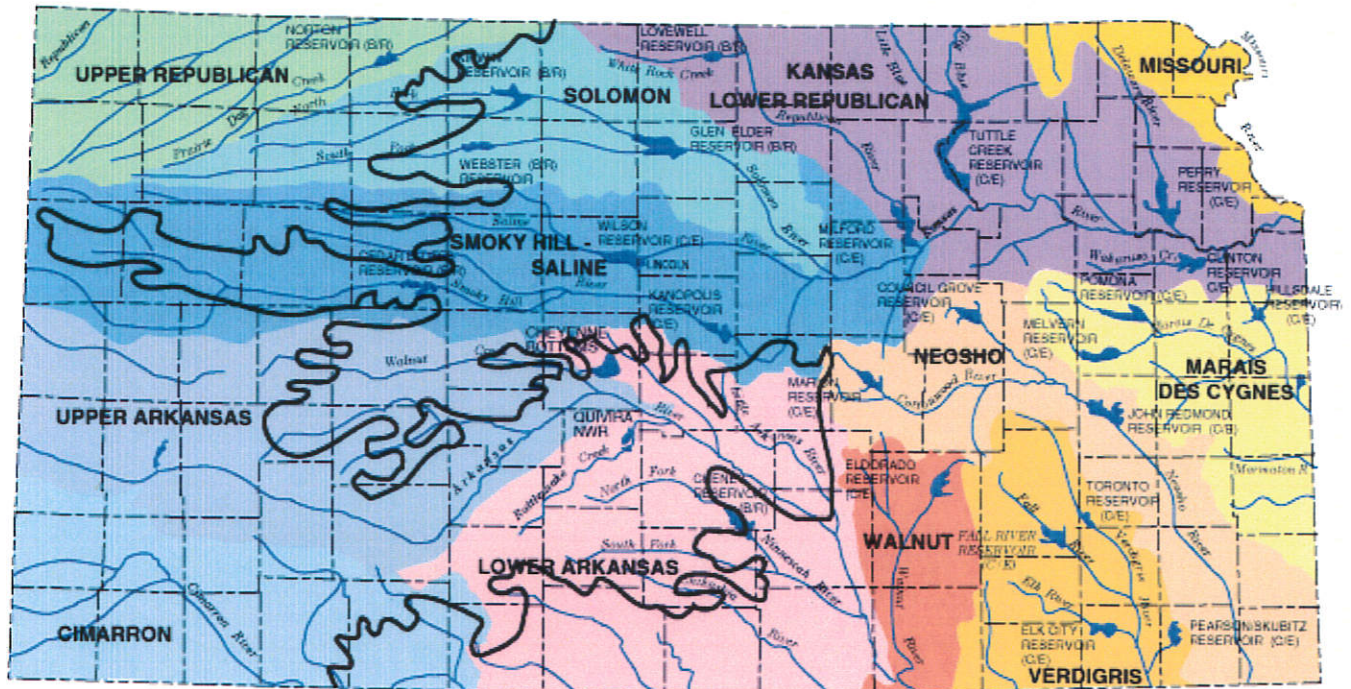
PRODUCTS

- Plan: Kansas Water Plan
- Implement: Kansas Water Authority Report to the Governor and Legislature
- Operate: Status Report
- Evaluate: Kansas Water Resource Conditions



MANAGEMENT OBJECTIVE IS TO

MANAGE THE RESOURCE



PRIORITY BASIN ISSUES

- Cimarron – Ogallala Management; Recreational Opportunities
- KS Lower Republican – Reservoir Operations/Mgmt.
- Lower Arkansas – Rattlesnake Creek Mgmt. Program
- Marais des Cygnes – TMDLs; Ft. Scott Flooding
- Missouri – Missouri River Management
- Neosho – TMDLs; Public Water Supply
- Smoky Hill-Saline – Reservoir and Ogallala Management
- Solomon – Alluvial and Ogallala Management
- Upper Arkansas – Ogallala Management
- Upper Republican – Ground Water Management
- Verdigris – TMDLs; Regional Public Water Supplies
- Walnut – TMDLs; Wetland & Riparian Management

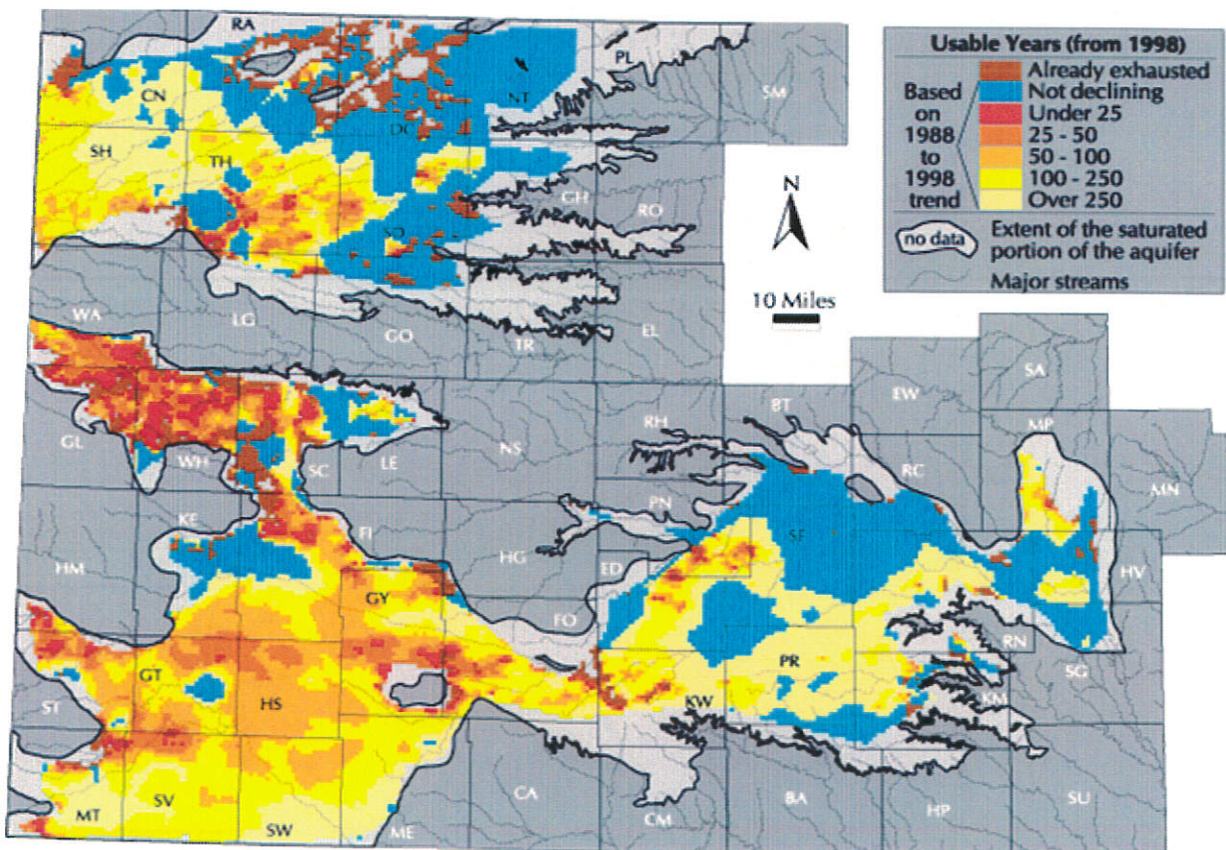
KEY WATER ISSUES

Achieve sustainable yield management of surface and groundwater in all areas outside the Ogallala by 2015 and within the Ogallala based on hydrologic conditions.

- River/Reservoir System
- Streams without Reservoirs
- Aquifers Outside the Ogallala
- The Ogallala Aquifer

A New Idea for Ogallala Management – Estimated Usable Lifetime

Estimated Usable Lifetime for large volume pumping from the High Plains Aquifer, assuming current water-level trends continue and the aquifer is exhausted when saturated thickness is 30 feet or less.



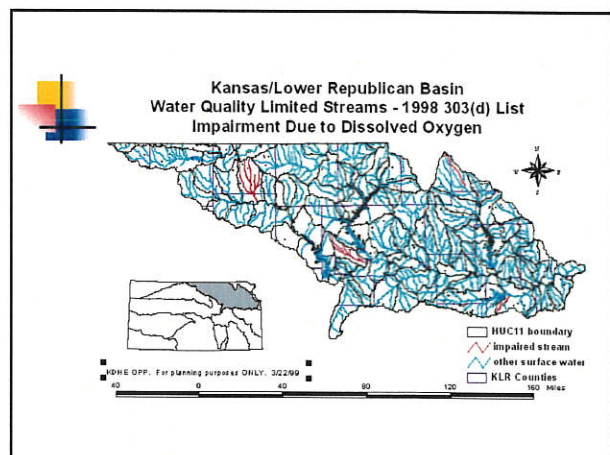
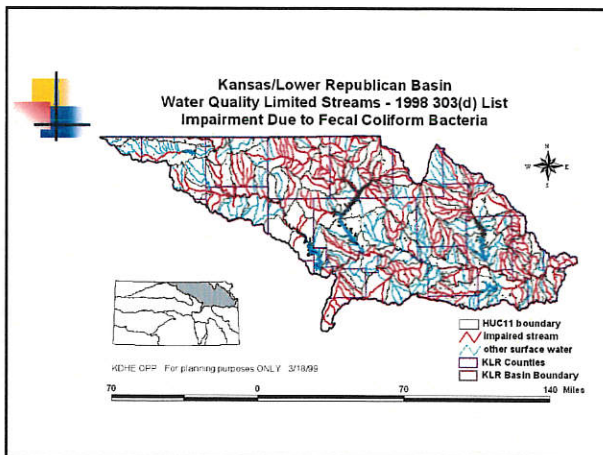
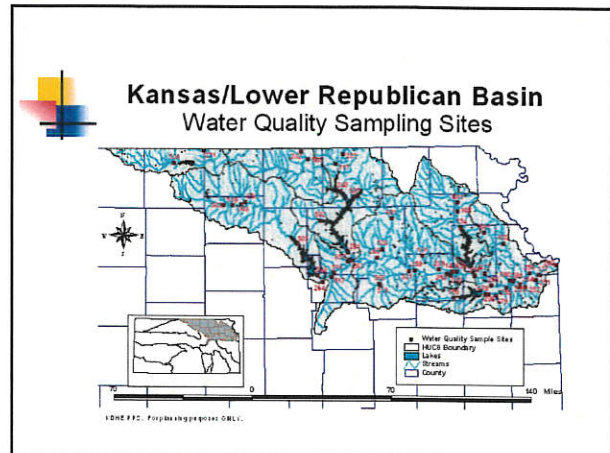
- State Management Programs in “Partnership” with Groundwater Management Districts
- Federal Assistance Programs

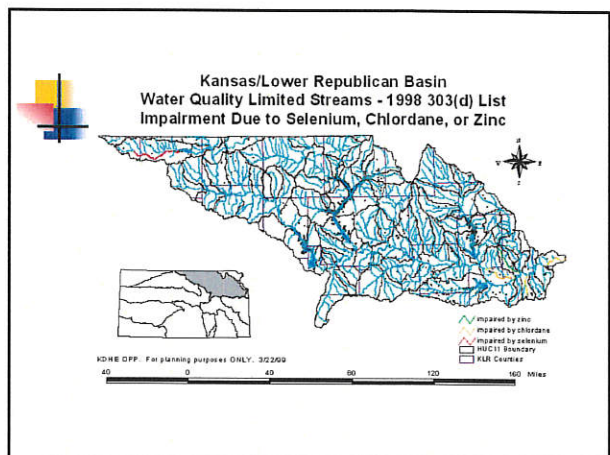
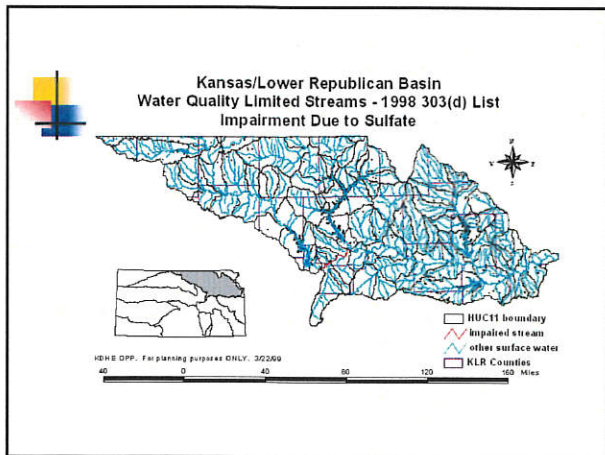
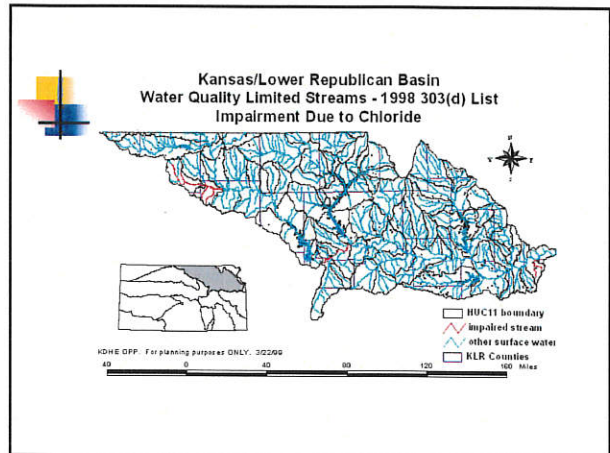
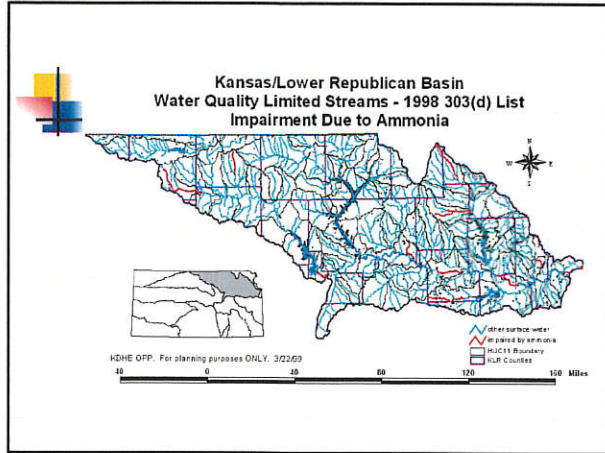
KEY WATER ISSUES

By 2010, reduce the contaminants that adversely affect the water quality of Kansas lakes, streams and aquifers.

Water Quality Total Maximum Daily Loads (TMDL) of Pollutants

Impairing Pollutant	Criteria	Impaired Designated Use
Alcohol	2 ug/L	Domestic Water Supply
Ammonia	0.25mg/L - 3.400 mg/L, depending on pH	Aquatic Life Support (Chronic)
Aquatic Plants	.	Excessive biomass of macrophytes sufficient to interfere with designated uses of aquatic life support and recreation
Atrazine	3 ug/L	Drinking Water, Aquatic Life Support (Chronic)
Boron	750 ug/L	Irrigation
Cadmium	5 ug/L	Drinking Water
Chloride	250 mg/L; 352 mg/L	Drinking Water, Aquatic Life Support (Chronic)
Dissolved Oxygen	5 mg/L	Aquatic Life Support
Eutrophy (Nutrients)	Narrative	Aquatic Life Support, Recreation, Drinking Water
Fecal Coliform Bacteria	2000 colonies/100ml	Recreation (non-contact)
Fluoride	1,000 ug/L	Irrigation
Nutrients/Biochemical Oxygen Demand	MBI of 4.5	Aquatic Life Support
pH	6.5 < > 8.5	Aquatic Life Support
Selenium	5 ug/L	Aquatic Life Support (Chronic)
Siltation/Sediment (Suspended Solids or Turbidity)	Narrative	Aquatic Life Support
Sulfate	250 mg/L	Domestic Water Supply
Zinc	2 mg/L	Irrigation





KEY WATER ISSUES

By 2010, ensure public water supplies their anticipated 2040 needs and increase economic development opportunities.

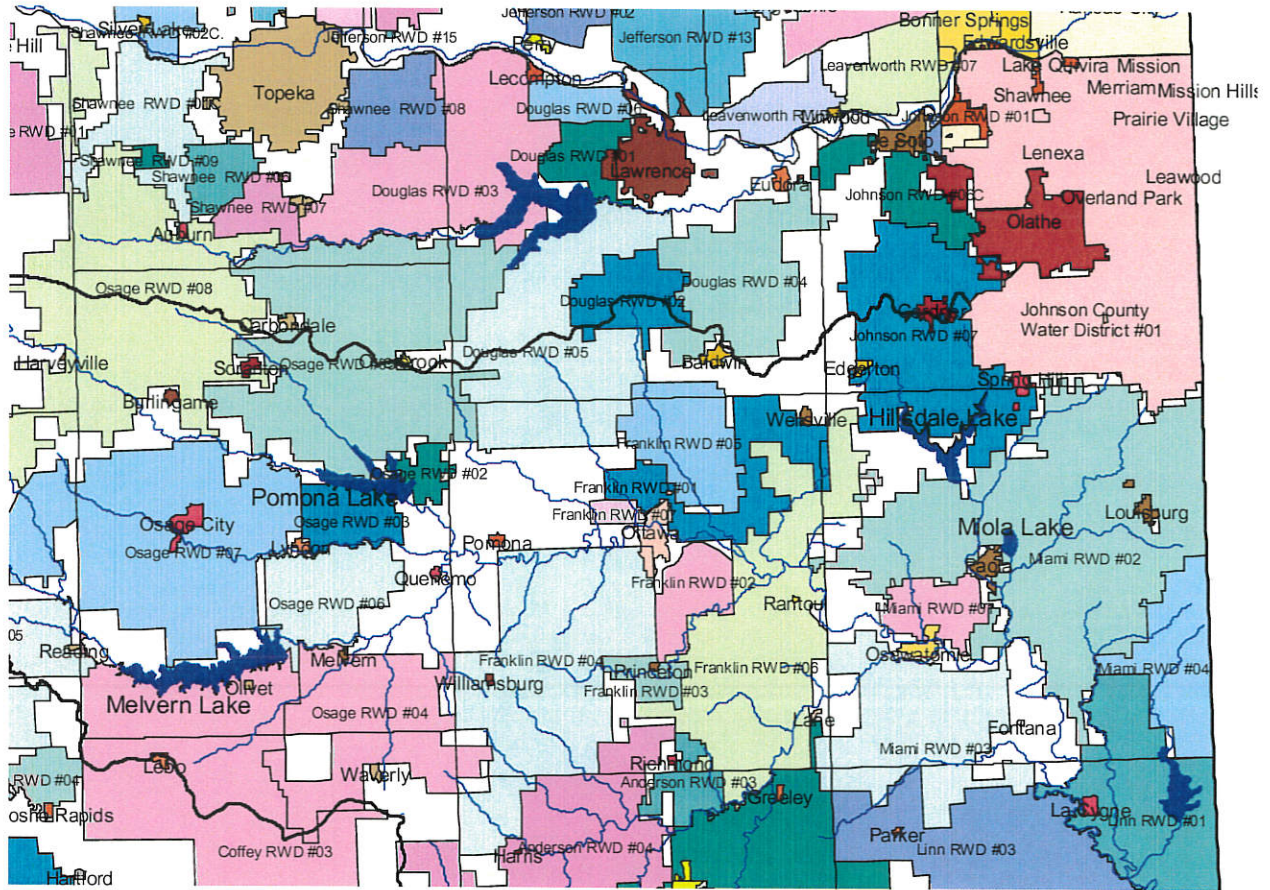


Figure 2
 Top Five Water Based Recreation Activities in Which Increased
 Participation is Desired
 Kansas, 2001

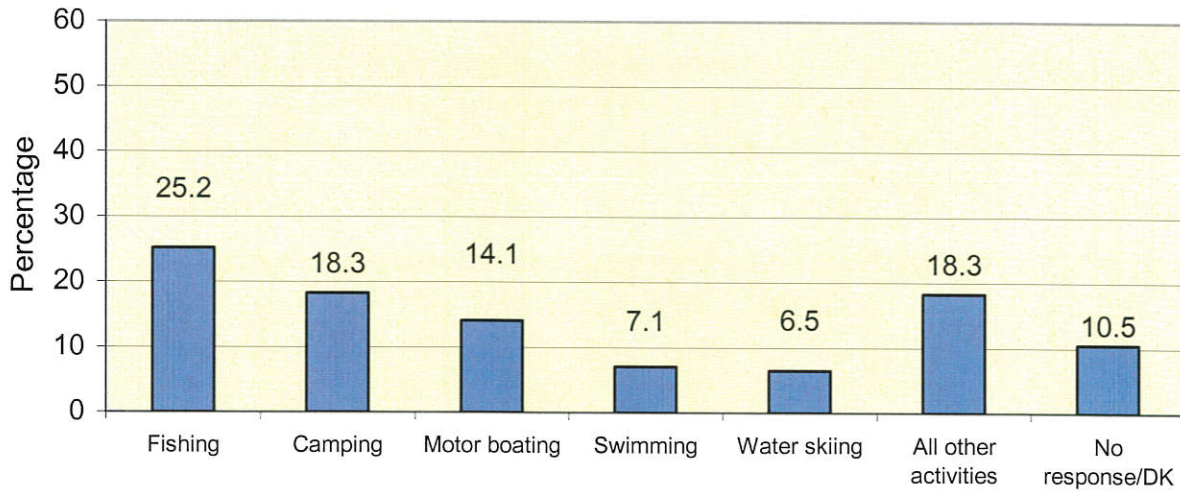


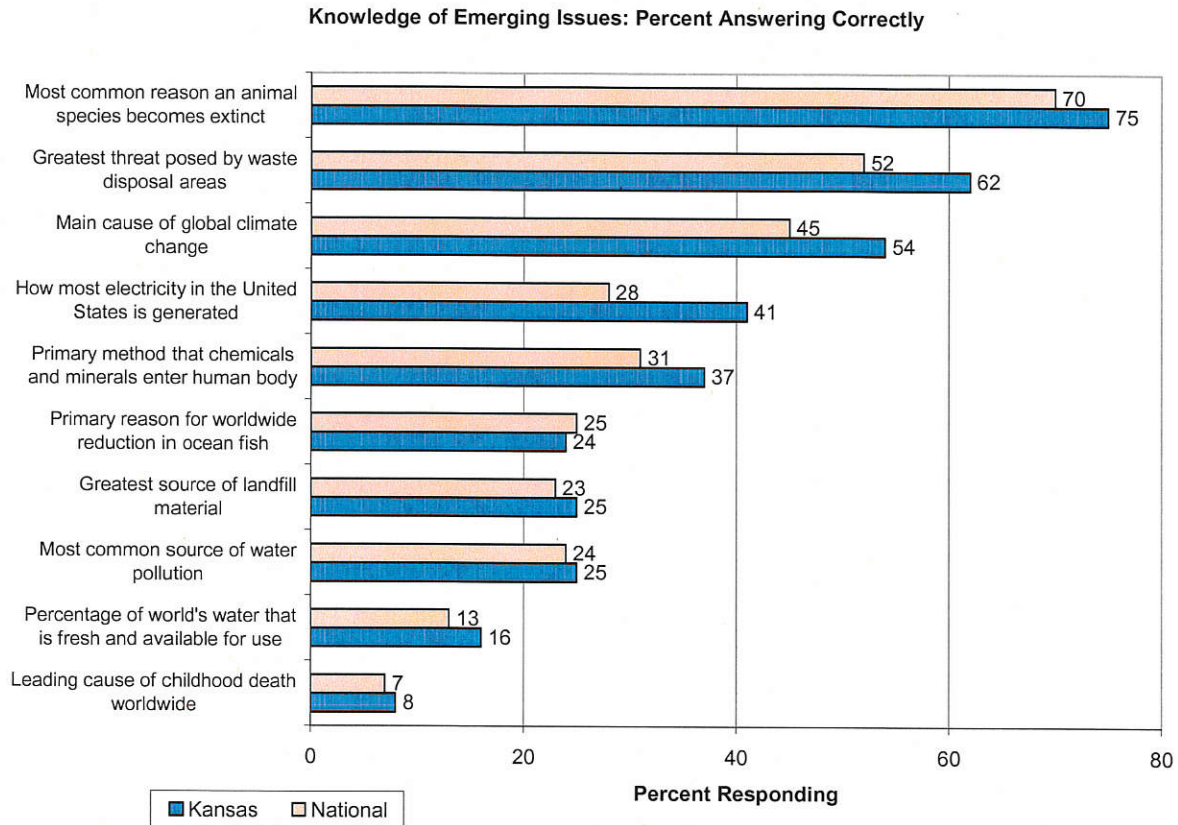
Table 3
All Reported Reasons for Not Participating More Frequently
In Water Based Recreation Activities in Kansas
Kansas, 2001¹

Reason	Respondents Reporting Current Participation	
	Inside Kansas	Outside Kansas
Not Enough Time	65.8	28.7
Seasonal Activity/Climate	38.4	32.2
Not Enough Public Places	24.6	29.2
Too Expensive	23.2	8.2
Too Far Away	22.6	38.6
Need More Information	17.8	36.8
Inadequate Facilities Available	15.0	20.5
Too Difficult To Get To	10.4	17.0
Not Interested	6.8	26.3
Other	15.7	40.9

¹ The percentages may sum to more or less than 100% because respondents were able to select any number of reasons.

KEY WATER ISSUES

By 2010, provide educational activities to increase Kansans knowledge of water to enable them to make better decisions.

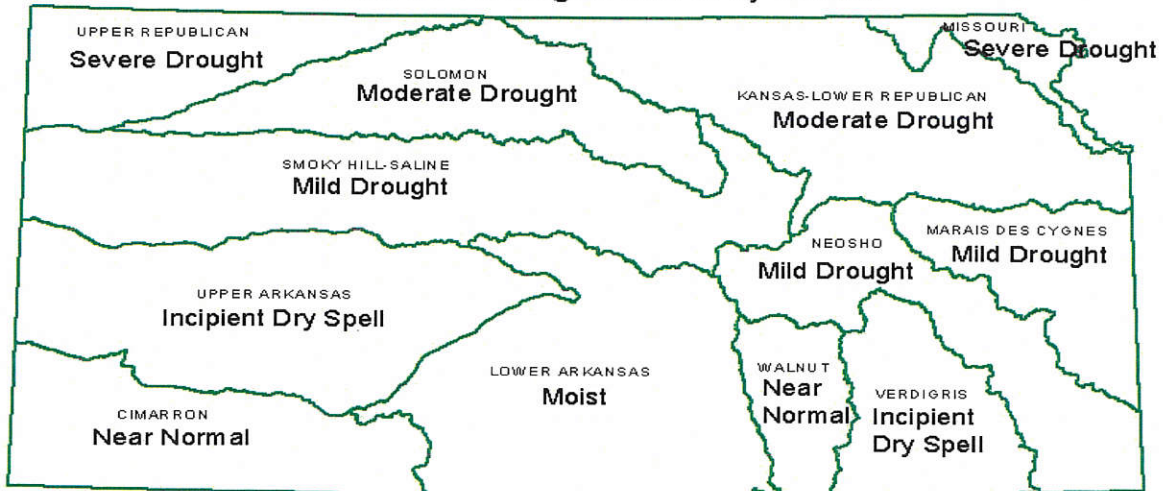


- Kansas Association for Conservation and Environmental Education – Programs such as Project Wet
- Kansas State University – Kansas Environmental Leadership Program
- Kansas Geological Survey – Field Conference

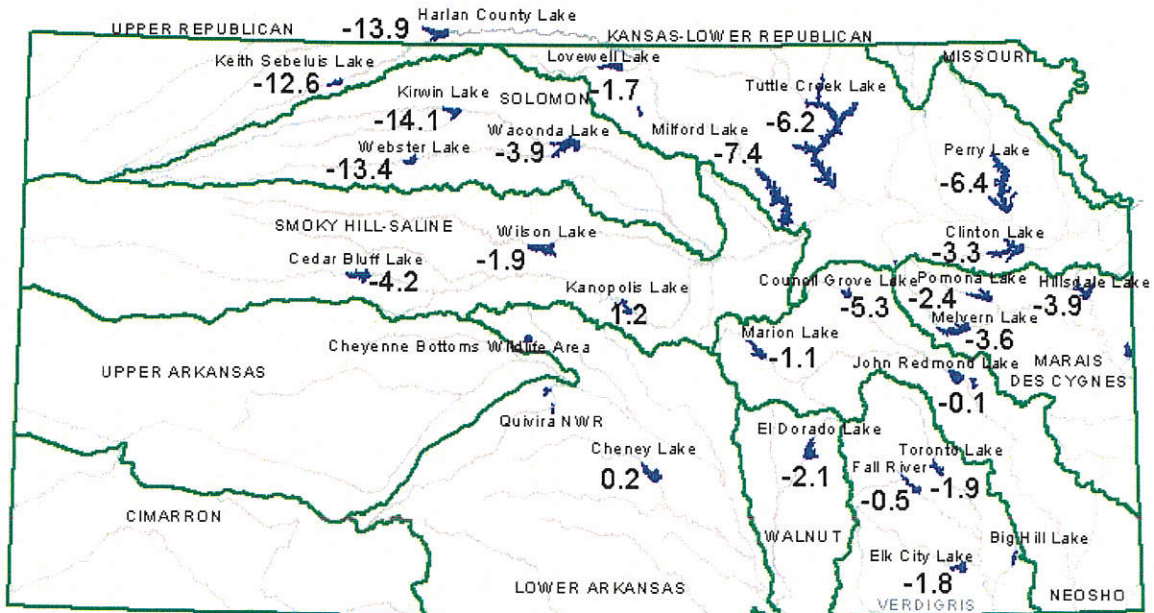
DROUGHT

An Immediate Issue

Palmer Drought Severity Index



Based on drought index for week ending January 18, 2002



Data from U.S. Army Corps of Engineers and USBR websites. Numbers represent the elevation in feet above (+) or below (-) the top of the Multipurpose or Conservation Pool.

LEGISLATIVE ISSUES

OVERSITE: Make sure the intent of state policies are carried out in a coordinated, efficient manner.

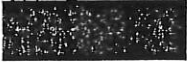
DIRECTION: Such as 1999 House Substitute for Senate Bill 287

ALLOCATION OF FUNDS: Coordination of expenditures of State Water Plan Funds with state agencies, as well as other state and federal funds.

LEGISLATION: Amendments to existing state policies and programs.
New state policies.

STATE OF KANSAS

KANSAS WATER OFFICE



Clark Duffy
Acting Director




Kathleen Sebelius, Governor

901 S. Kansas Avenue
Topeka, Kansas 66612-1249

785-296-3185
FAX 785-296-0878

Kansas Water Office Contact Information

Kansas Water Office

901 S. Kansas Avenue
Topeka, Kansas 66612
Phone: (785) 296-3182
Fax: (785) 296-0878
Website: www.kwo.org

Clark Duffy

Director

Phone (785) 296-3185
Fax (785) 296-0878
Cell (785) 230-0881
E-mail: cduffy@kwo.state.ks.us

Ken Grotewiel

Assistant Director

Phone (785) 296-3185
Fax (785) 296-0878
E-mail: jgrotewiel@kwo.state.ks.us

Earl Lewis

Manager, Hydrology and Evaluation Unit

Phone (785) 296-0867
Fax (785) 296-0878
E-mail: elewis@kwo.state.ks.us

Margaret Fast

Manager, Planning Unit

Phone (785) 296-0865
Fax (785) 296-0878
E-mail: mfast@kwo.state.ks.us

Joe Fund

Chief Fiscal Officer

Phone (785) 296-0872
Cell (785) 633-2439
Fax (785) 296-0878
E-mail: jfund@kwo.state.ks.us