

Approved: \_\_\_\_\_  
Date 4/10/02

## MINUTES OF THE SENATE COMMITTEE ON REAPPORTIONMENT.

The meeting was called to order by Chairperson Senator David Adkins at 11:35 a.m. on March 26, 2002 in Room 243-N of the Capitol.

All members were present.

### Committee staff present:

Mary Galligan, Kansas Legislative Research Department  
Kathie Sparks, Kansas Legislative Research Department  
Mary Ann Torrence, Revisor of Statutes  
Judy Swanson, Committee Secretary

### Conferees appearing before the committee:

None

### Others attending:

See attached guest list

Chairman Adkins reviewed possible modifications to Senator Hensley's plan, Senate Plan 21.

Senator Teichman said she had no problem with the suggestions made in Senate Plan 21 to Senate District 33.

Senator Jenkins said that the modification of swapping three precincts in Senator Jackson district to her district was agreeable to both of them. Senator Schmidt was agreeable to moving Elk and part of Coffey counties into his district, moving Greenwood County out of his district possibly into Senator Barnett's district. Senator Corbin indicated that moving Mulvane into Senator Goodwin's district had been resolved.

The Cherokee County problem concerning Senators Barone and Umbarger, as well as, Johnson County have yet to be resolved.

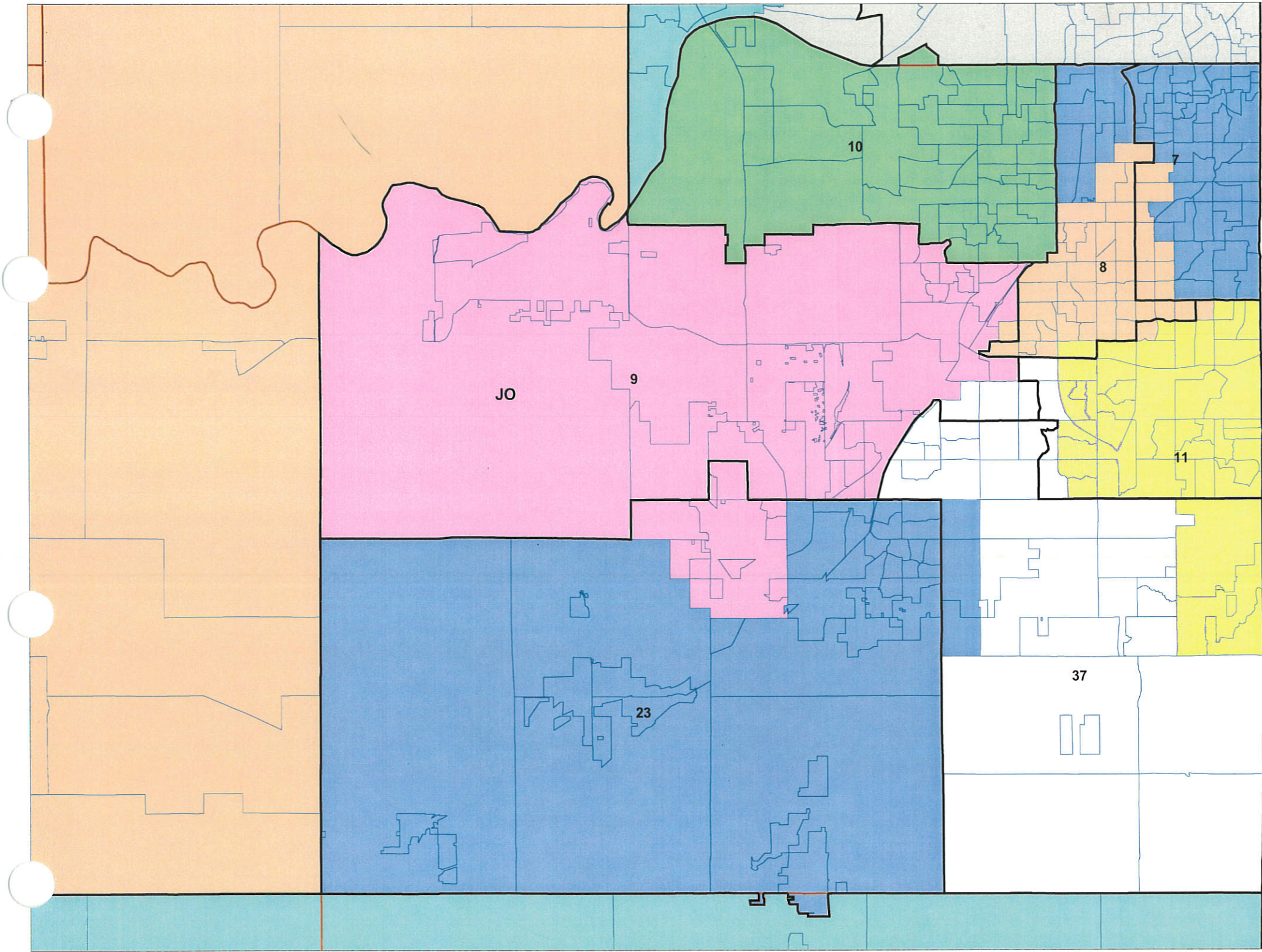
In Johnson County, Senator Vratil's district was still in question. A suggested Johnson County map was distributed. (Attachment 1) Chairman Adkins said he hoped that the Committee could resolve the redistricting issue by tomorrow.

Senator Lee said Senator Umbarger took three townships from Montgomery County. Senator Huelskamp stated that the Johnson County decision should be made by the Committee of the Whole and the sooner a bill reaches the Senate Floor, the better. Senator Pugh felt it was time to send a map to the Senate.

A packet of maps and reports describing Senate Plan 21, the proposed Senate districts' presented to the Committee last week by Senator Hensley, is attached to the Committee Minutes. (Attachment 2)

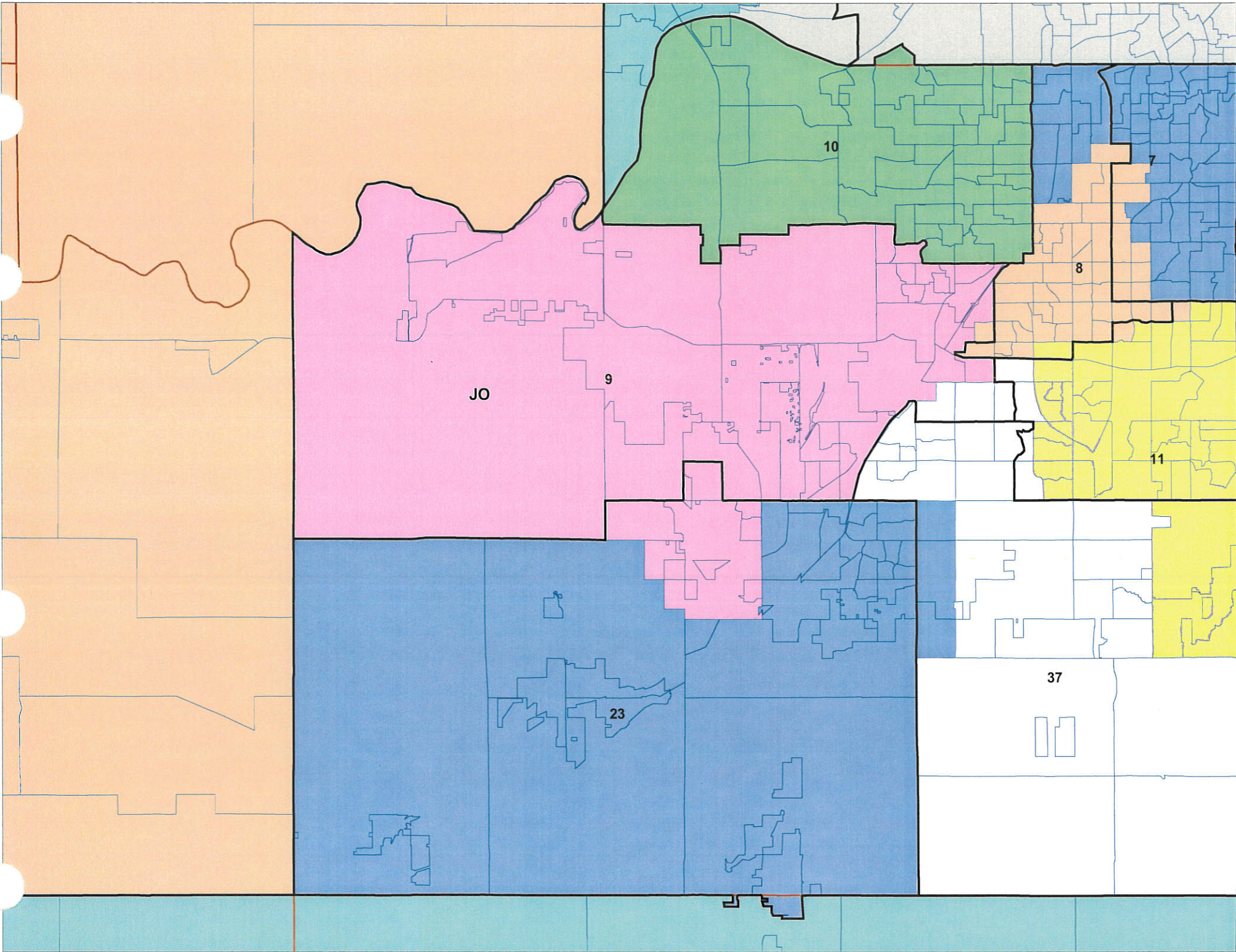
The committee meeting adjourned at 11:55.





Senate Reapportionment  
March 26, 2002  
Attachment 1

Attachment I



1-2

# KANSAS LEGISLATIVE RESEARCH DEPARTMENT

Rm. 545N--Statehouse, 300 SW 10th Ave.  
Topeka, Kansas 66612-1504  
(785) 296-3181 ♦ FAX (785) 296-3824

[kslegres@klrd.state.ks.us](mailto:kslegres@klrd.state.ks.us)

<http://skyways.lib.ks.us/ksleg/KLRD/klrd.html>

March 25, 2002

**To:** Senate Committee on Reapportionment

**From:** Mary Galligan, Principal Analyst

**Re:** Senate Plan 21

Enclosed you will find a packet composed of maps and reports describing *Senate Plan 21*, the proposed Senate districts presented to the Committee last week by Senator Hensley. The plan has been subject to technical review by Kansas Legislative Research Department staff as required by the Committee's rules. The summary document included with this mailing provides a means of comparing the proposed Senate plans that have been made public thus far.

If you have questions about this material, please feel free to contact me.

MG/mkl

Enclosure

36106(3/25/2(1:48PM))

*Senate Reapportionment  
March 26, 2002  
Attachment 2*

2-2

# Senate Plan 21

page 1 of 10

**Plan: M4\_Senate Plan 21 for KLRD TR**

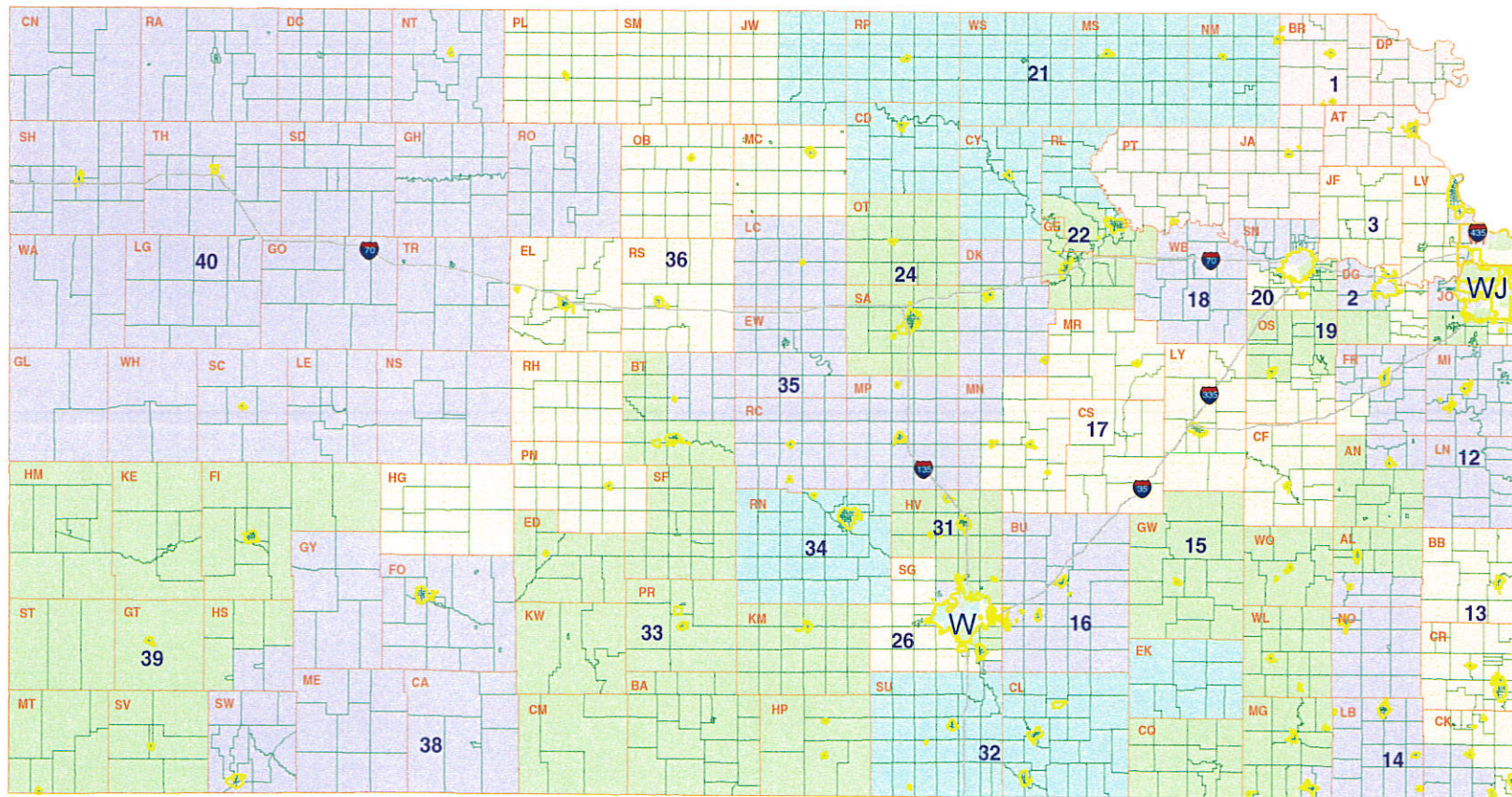
Map Features

- Voting District
- Cities class 1 or 2
- County
- Interstate Highway Districts

0 20 40 60  
Miles

Kansas Legislative Research Dept. 03/22/03

NOTE: In urban areas, VTD boundaries and highways have been hidden so that other information can be displayed. Detailed maps of urban areas follow this statewide map.



W= Wichita districts 25, 27-30

WJ=Wyandotte and Johnson County districts 4-11, 23, 37

# Senate Plan 21

## Western Kansas

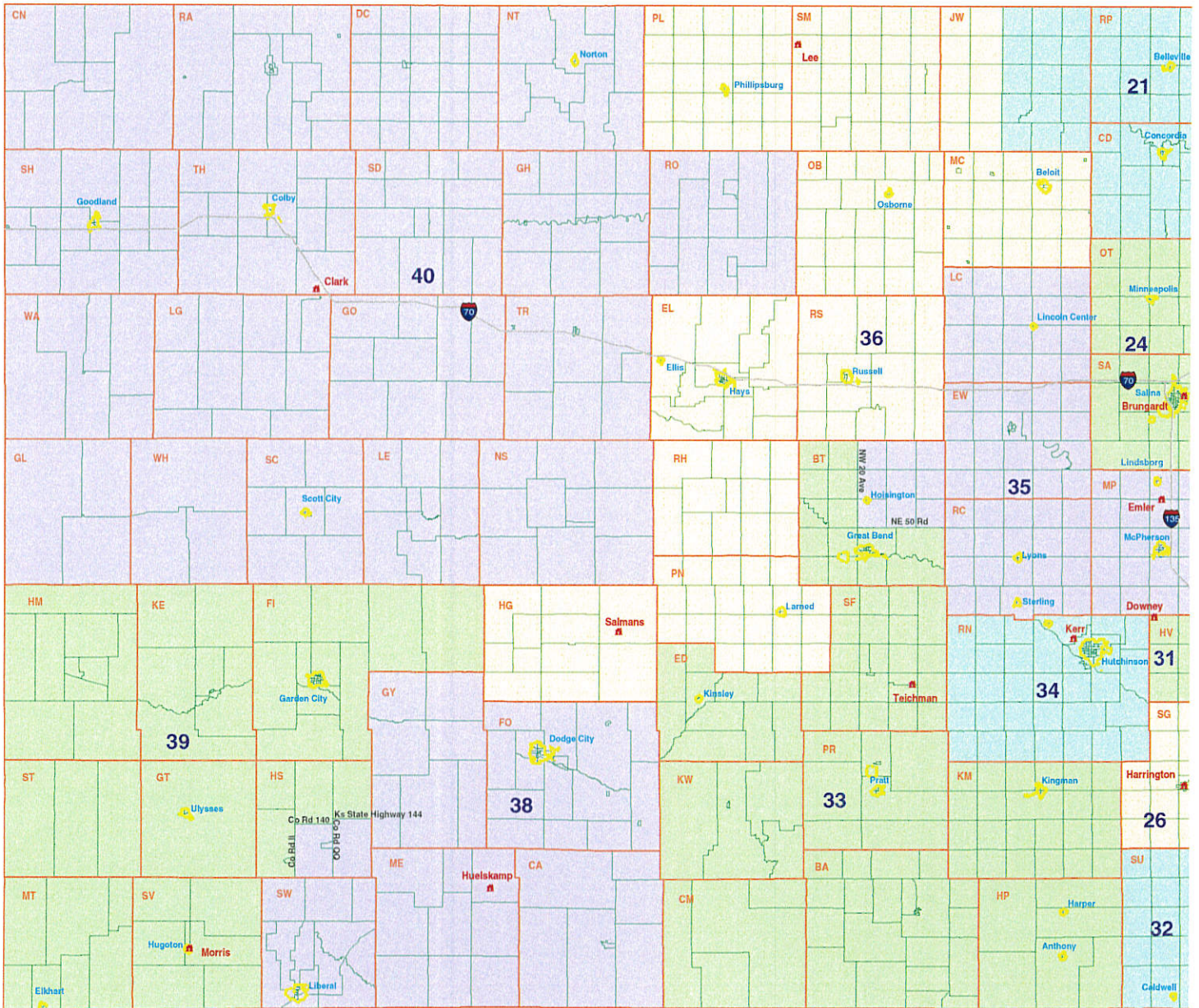
**Plan: M4\_Senate Plan 21 for KLRD TR**

Map Features

- Voting District
- Cities class 1 or 2
- County
- ▲ Senate Incumbent
- I-70 Interstate Highways

0 10 20 30  
Miles

Kansas Legislative Research Dept. 03/22/02



22

Plan: M4\_Senate Plan 21 for KLRD TR

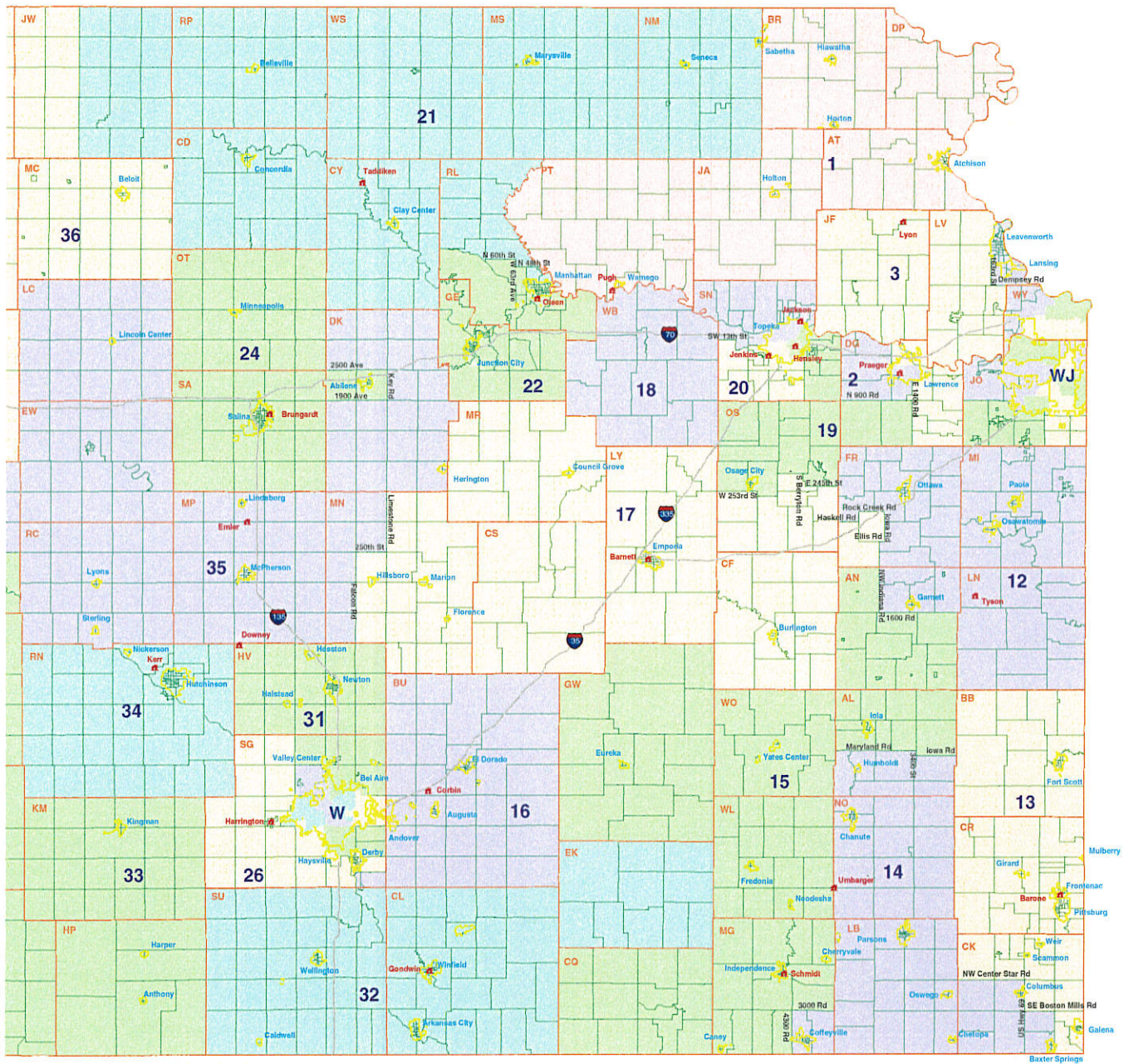
Map Features

- Voting District
- Cities class 1 or 2
- County
- ▲ Senate Incumbent
- ⦿ Interstate Highway

0 10 20 30  
 Miles

Kansas Legislative Research Dept. 03/22/02

NOTE: In urban areas, VTD boundaries and highways have been hidden so that other information can be displayed. Detailed maps of urban areas follow this map.



W= Wichita districts 25, 27-30      WJ=Wyandotte and Johnson County districts 4-11, 23, 37

2-4



# Senate Plan 21

Segwick County

page 4 of 10

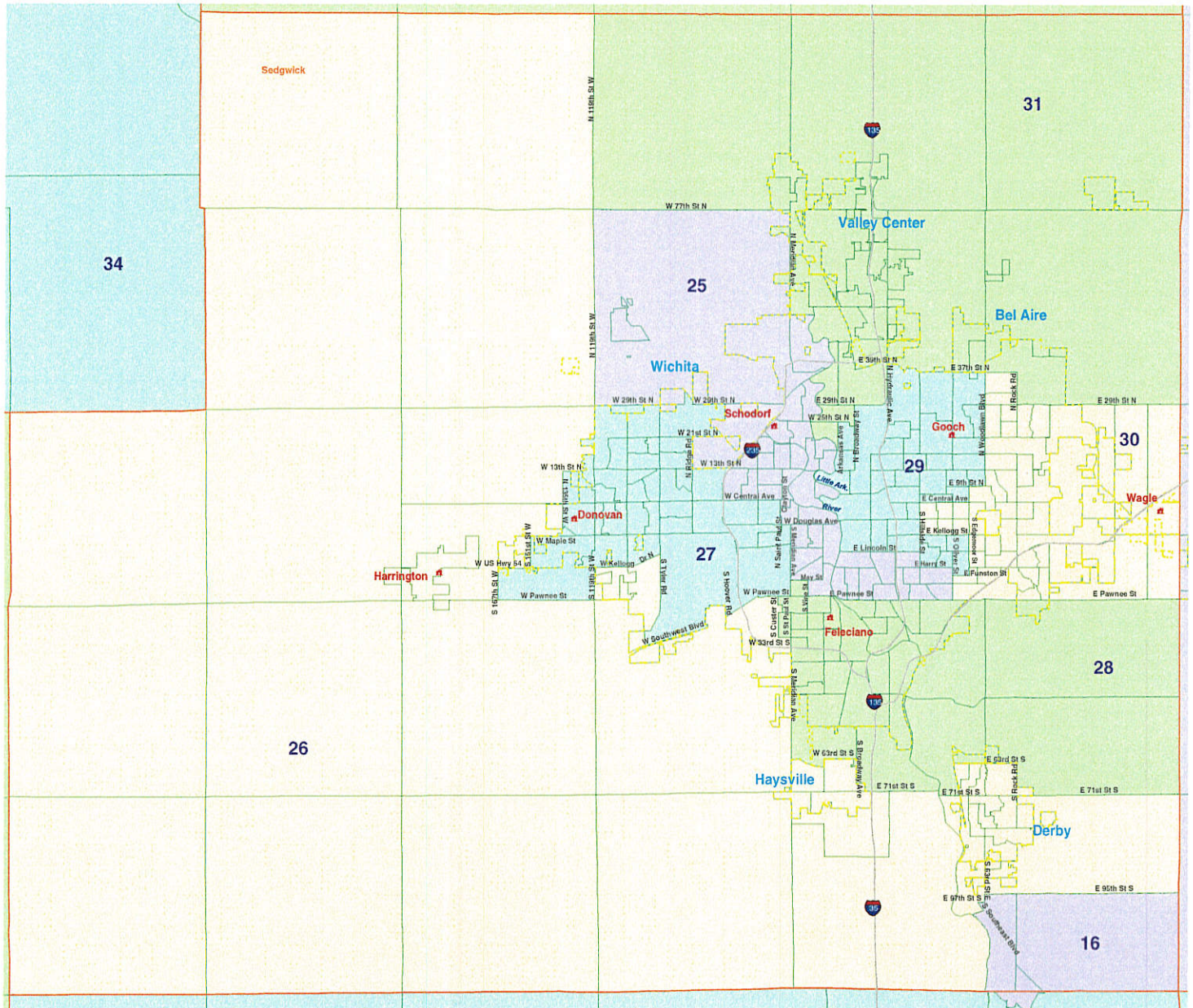
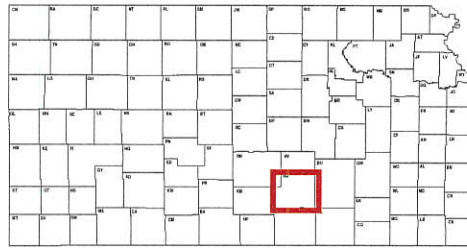
Plan: M4\_Senate Plan 21 for KLRD TR

Map Features

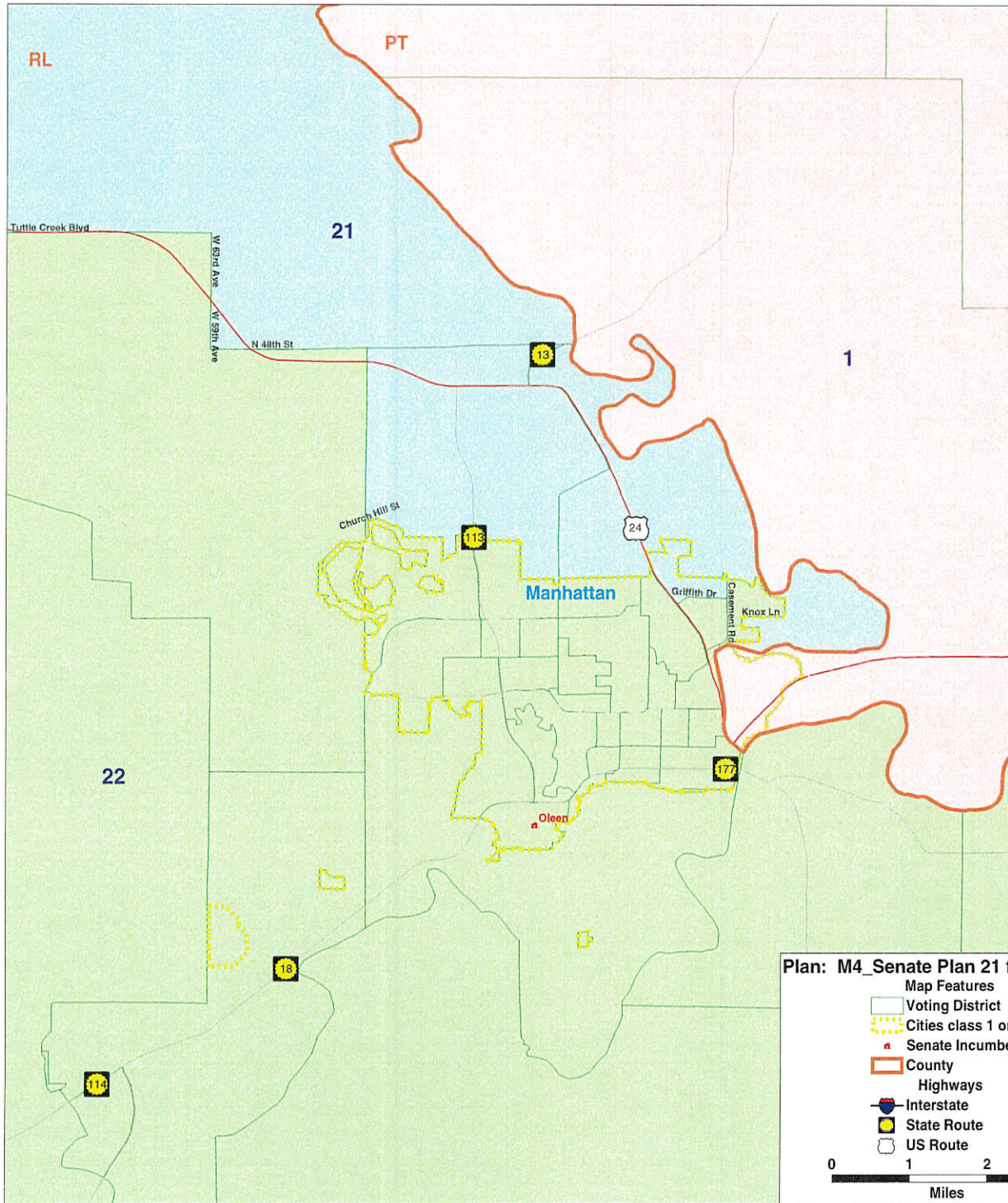
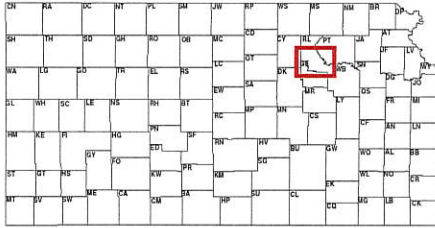
- Voting District
- Cities class 1 or 2
- County
- Senate Incumbent
- Interstate Highway

0 2 4 6  
Miles

Kansas Legislative Research Dept. 03/22/02



2-5



Plan: M4\_Senate Plan 21 for KLRD TR

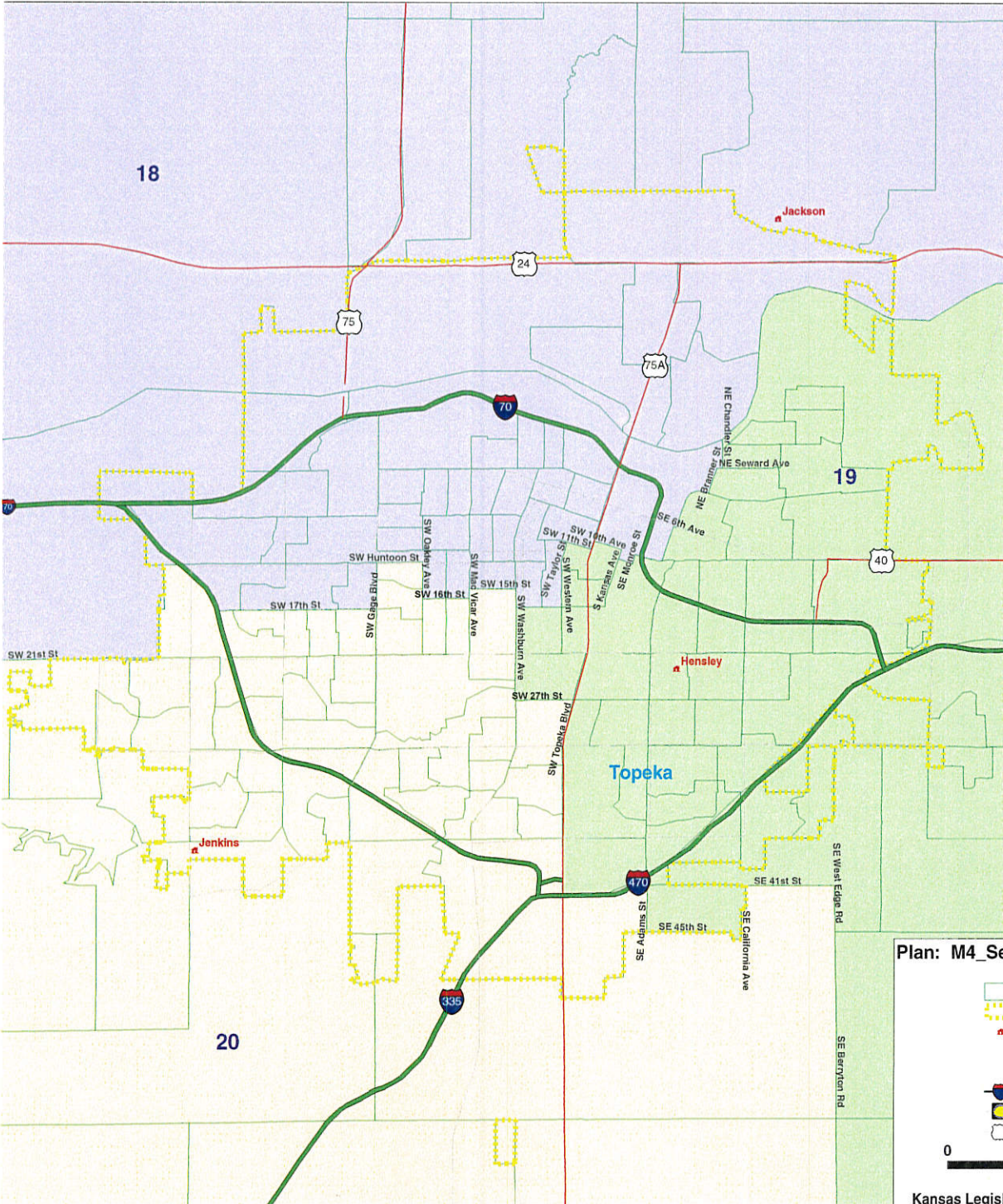
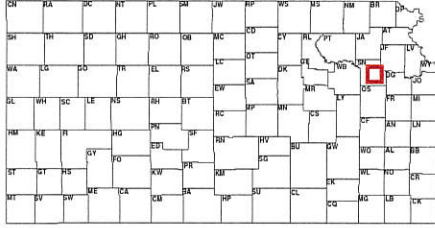
Map Features

- Voting District
- Cities class 1 or 2
- ▲ Senate Incumbent
- County
- Highways
- Interstate
- State Route
- US Route

0 1 2 3  
 Miles

Kansas Legislative Research Dept. 03/22/03

2-6



**Plan: M4\_Senate Plan 21 for KLRD TR**

**Map Features**

- Voting District
- Cities class 1 or 2
- ★ Senate Incumbent

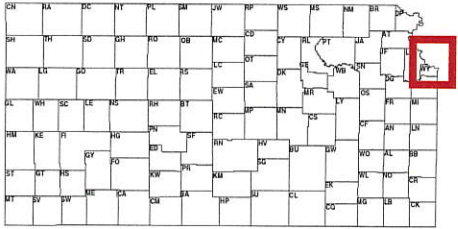
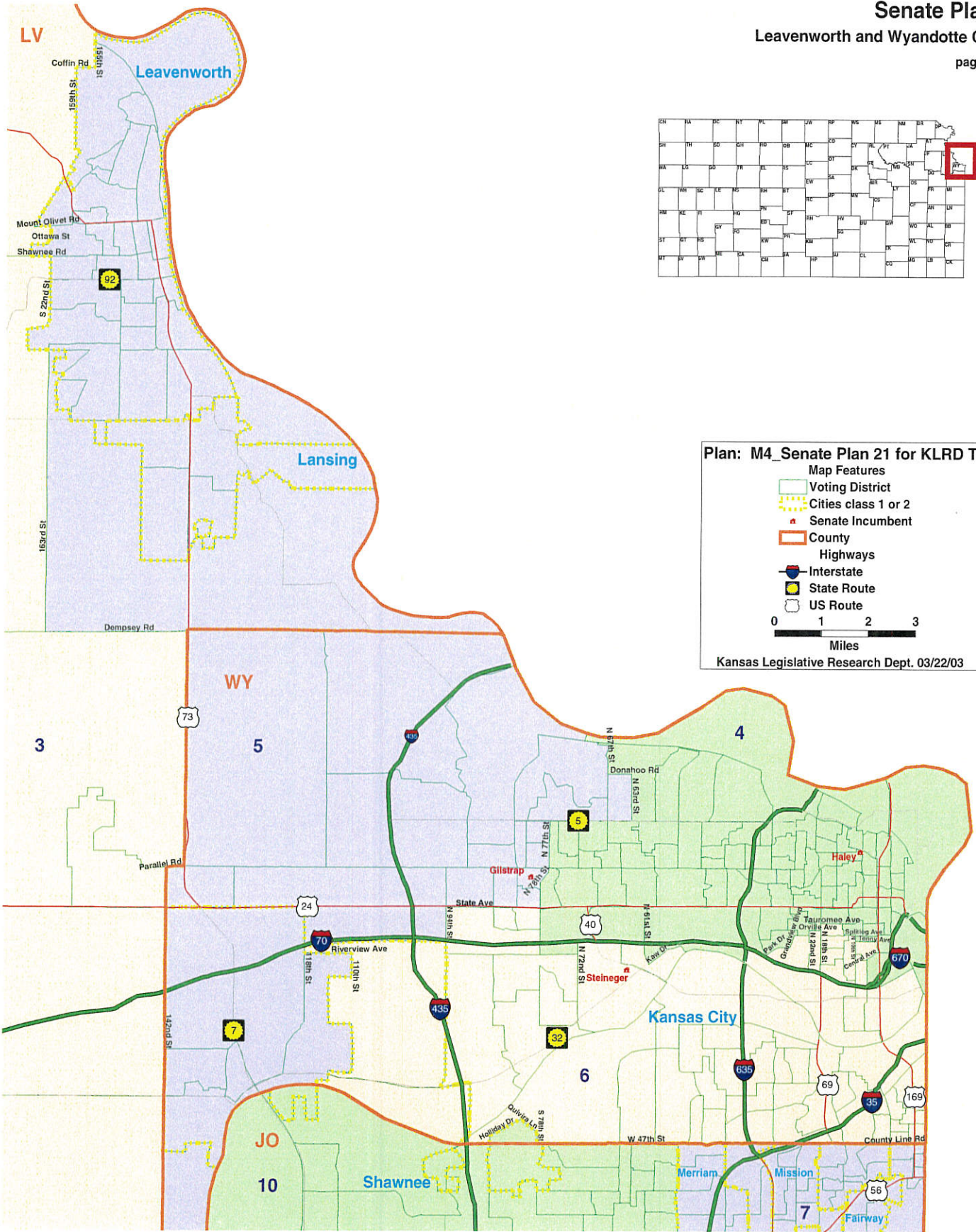
**Highways**

- I-70 Interstate
- S-75 State Route
- 75 US Route

0      .8      1.6      2.4  
Miles

Kansas Legislative Research Dept. 03/22/03

2-7

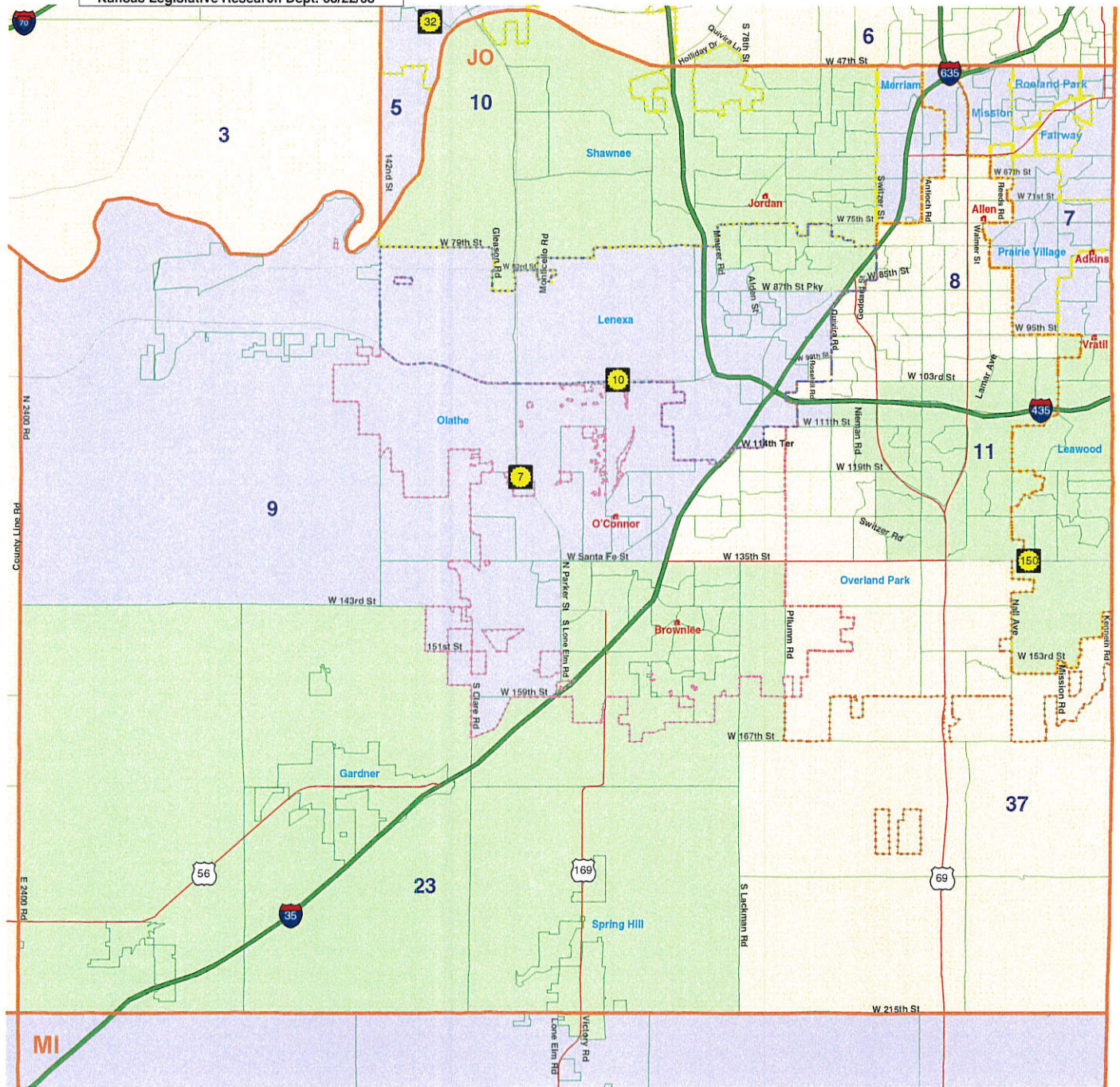
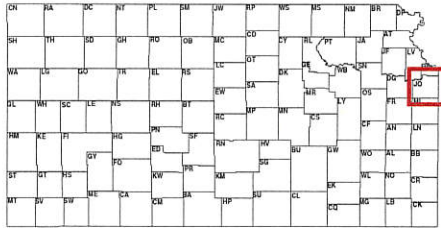


2-8

Plan: M4\_Senate Plan 21 for KLRD TR

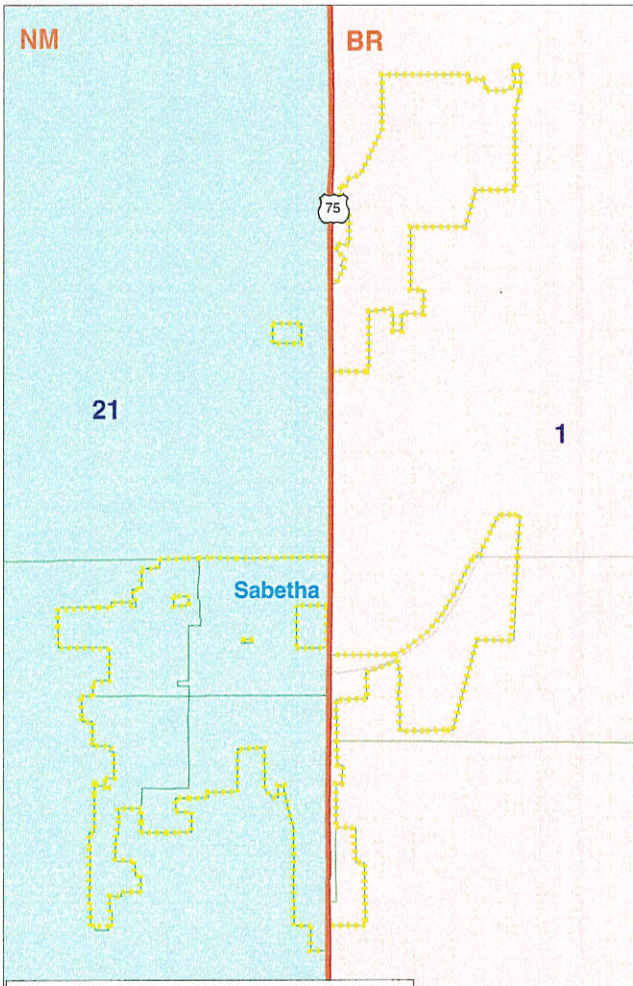
- Map Features
- Voting District
  - Cities class 1 or 2
  - ▲ Senate Incumbent
  - County
  - Overland Park
  - Olathe
  - Lenexa
  - Highways
  - Interstate
  - State Route
  - US Route
- 0 1 2 3  
Miles

Kansas Legislative Research Dept. 03/22/03



29

A



**Plan: M4\_Senate Plan 21 for KLRD TR**

**Map Features**

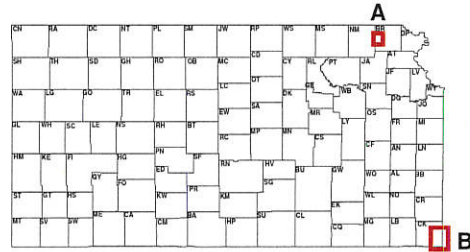
- Voting District
- Cities class 1 or 2
- Senate Incumbent
- County (Tiger)

**Highways**

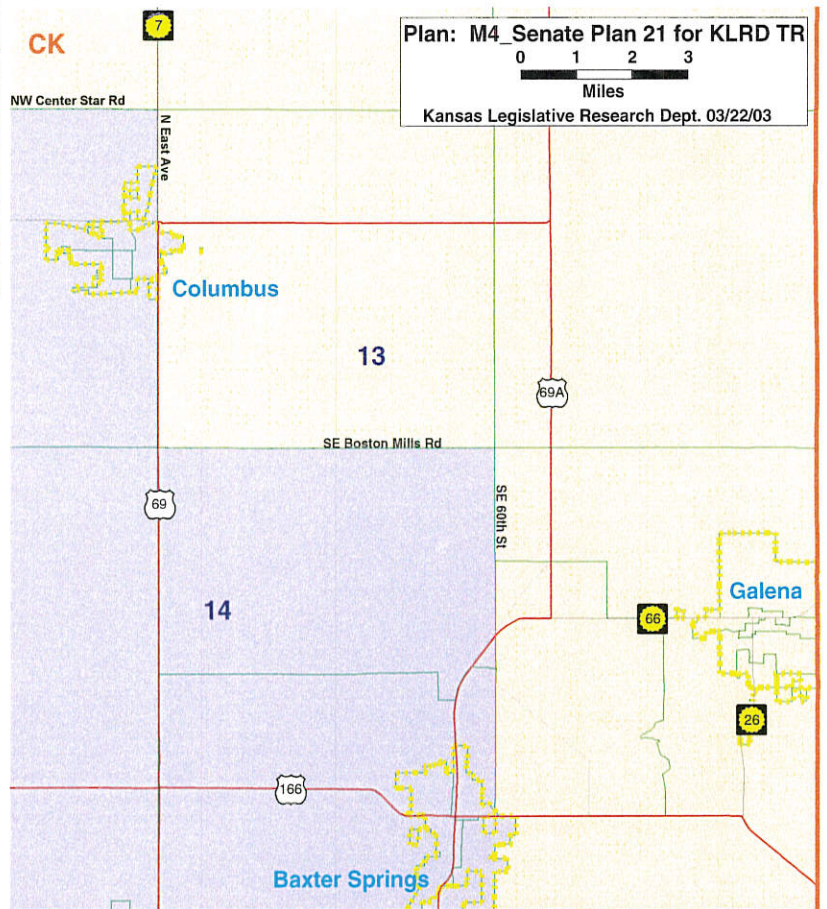
- Interstate
- State Route
- US Route

0 0.5 1 1.5  
Miles

Kansas Legislative Research Dept. 03/22/03



B



2-10

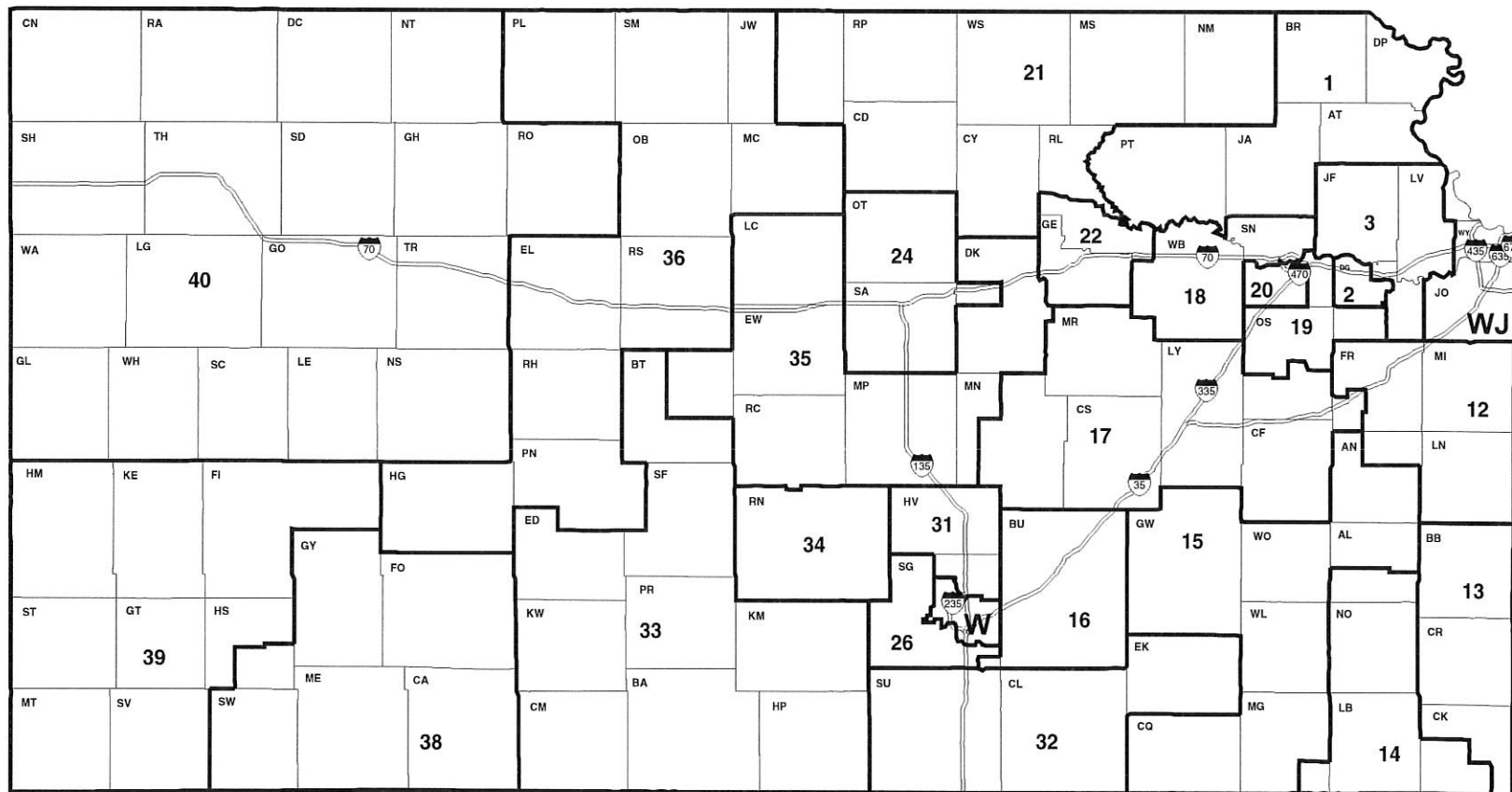
211

**Plan: M4\_Senate Plan 21 for KLRD TR**  
Map Features

- District
- County
- Interstate Highway

Miles  
Kansas Legislative Research Dept. 03/22/03

NOTE: In some urban areas, district boundaries cannot be shown at this scale. For these urban districts, see the key below the map.



W= Wichita districts 25, 27-30

WJ=Wyandotte and Johnson County districts 4-11, 23, 37

Plan: M4\_Senate Jan 21 for KLRD TR  
Plan Type: Senate  
Administrator: Tim Graham  
User: KLRD

## Population Summary Report

---

DISTRICT	K_Population	DEVIATION	% DEVN.
1	66,600	-206	-0.31
2	67,041	235	0.35
3	67,721	915	1.37
4	66,146	-660	-0.99
5	68,137	1,331	1.99
6	68,652	1,846	2.76
7	68,407	1,601	2.40
8	66,239	-567	-0.85
9	63,985	-2,821	-4.22
10	63,692	-3,114	-4.66
11	64,414	-2,392	-3.58
12	66,570	-236	-0.35
13	64,518	-2,288	-3.42
14	66,876	70	0.10
15	63,741	-3,065	-4.59
16	65,572	-1,234	-1.85
17	68,498	1,692	2.53
18	64,578	-2,228	-3.34
19	64,605	-2,201	-3.29
20	63,704	-3,102	-4.64
21	64,564	-2,242	-3.36
22	68,136	1,330	1.99
23	63,752	-3,054	-4.57
24	69,269	2,463	3.69
25	68,744	1,938	2.90
26	67,725	919	1.38
27	68,885	2,079	3.11
28	66,085	-721	-1.08
29	69,320	2,514	3.76
30	69,773	2,967	4.44
31	69,839	3,033	4.54
32	64,523	-2,283	-3.42
33	67,272	466	0.70
34	64,871	-1,935	-2.90
35	67,854	1,048	1.57
36	69,710	2,904	4.35
37	63,648	-3,158	-4.73
38	70,122	3,316	4.96
39	69,652	2,846	4.26
40	68,817	2,011	3.01

---

---



---

Plan: M4\_Senate Plan 21 for . FR Administrator: Tim Graha.  
Type: Senate User: KLRD

Total Population: 2,672,257  
Ideal District Population: 66,806

**Summary Statistics**

Population Range: 63,648 to 70,122  
Ratio Range: 1.10  
Absolute Range: -3,158 to 3,316  
Absolute Overall Range: 6,474.00  
Relative Range: -4.73% to 4.96%  
Relative Overall Range: 9.69%  
Absolute Mean Deviation: 1,875.78  
Relative Mean Deviation: 2.81%  
Standard Deviation: 2,142.90

Plan: M4\_Senate Plan 21 for KLRD TR  
Plan Type: Senate

Administrator: Tim Graham  
User: KLRD

## Districts & Their Incumbents

---

District	Name	Party	Previous District
1	Edward Pugh	R	1
2	Sandy Praeger	R	2
3	Bob Lyon	R	3
4	David Haley	D	4
5	Mark Gilstrap	D	5
6	Chris Steineger	D	6
7	David Adkins	R	7
8	Barbara Allen	R	8
9	Kay O'Connor	R	9
10	Nick Jordan	R	10
11	John Vratil	R	11
12	Robert Tyson	R	12
13	Jim Barone	D	13
14	Dwayne Umbarger	R	14
15	Derek Schmidt	R	15
16	Dave Corbin	R	16
17	Jim Barnett	R	17
18	David Jackson	R	18
19	Anthony Hensley	D	19
20	Lynn Jenkins	R	20
21	Mark Taddiken	R	21
22	Lana Oleen	R	22
23	Karin Brownlee	R	23
24	Pete Brungardt	R	24
25	Jean Schodorf	R	25
26	Nancey Harrington	R	26
27	Les Donovan	R	27

2-14

Plan: M4\_Senate Plan 21 for k R  
Type: Senate

Administrator: Tim Graham  
User: KLRD

District	Name	Party	Previous District
28	Paul Feleciano	D	28
29	U. L. Rip Gooch	D	29
30	Susan Wagle	R	30
31	Christine Downey	D	31
32	Greta Goodwin	D	32
33	Ruth Teichman	R	33
34	Dave Kerr	R	34
35	Jay Scott Emler	R	35
36	Larry Salmans	R	37
36	Janis Lee	D	36
37			
38	Tim Huelskamp	R	38
39	Stephen Morris	R	39
40	Stan Clark	R	40

Number of Incumbents in a District with more than one Incumbent:	2	<input type="checkbox"/>	<input type="checkbox"/>
Number of Districts with No Incumbent:	1	<input type="checkbox"/>	<input type="checkbox"/>
Number of Districts with Incumbents of more than one party:	1	<input type="checkbox"/>	<input type="checkbox"/>
Number of Districts with Paired Democrats:	0	<input type="checkbox"/>	<input type="checkbox"/>
Number of Districts with Paired Republicans:	0	<input type="checkbox"/>	<input type="checkbox"/>

2-15

2-16

REVISED  
SUMMARY OF CHARACTERISTICS OF PROPOSED KS. SENATE DISTRICTS

Plan Name (Author/Bill No.)	Population and Geography Basis	Deviation From Ideal Population Max. to Min. and Overall	Minority Population <sup>1)</sup>	Preservation of Prior District Population Core (Primary source district) <sup>2)</sup>	Districts with More than one Incumbent	Districts With No Incumbent	Political Subdivisions <sup>3)</sup>	Contiguity and Compactness <sup>4)</sup>	Notes
<b>Senate 2004 A</b> (Special Committee on Redistricting, SB 379)	K-Population VTDs and Census blocks.	<b>9.42% overall</b> -2,983 to 3,310 people, or -4.47% to 4.95%	The highest percent non-Hispanic Black population ranges from 43.9% - 45.1% in the 4th district. Corresponding voting age population in the district is 42.0% - 42.8%.  The highest Hispanic population is 35.8% in the 39th district. Hispanic voting age population in the district is 30.4%.	# Dists. % 1 <=50% 9 51% - 75% 5 76% - 85% 13 86% - 95% 12* 96% - 100% <small>* 5 districts contain 100% of the previous district population.</small>	Three: districts 6, 7, and 40	Three: districts 5, 8, and 36	31 VTDs are split. 18 VTD splits involve no population. 22 cities are split. 25 counties are split.	Plan contains 40 districts. All districts are contiguous. Roeck = 0.22 min. 0.60 max.	
<b>214102 5PM</b> (Senators Clark and Lee)	K-Population All districts based on whole VTDs.	<b>8.60% overall</b> -2,771 to 2,973 people, or -4.15% to 4.45%	The highest percent non-Hispanic Black population ranges from 50.2% - 51.6% in the 4th district. Corresponding voting age population in the district is 47.3% - 48.2%.  The highest Hispanic population is 36.8% in the 39th district. Hispanic voting age population in the district is 31.2%.	# Dists. % 4 <=50% 7 51% - 75% 11 76% - 85% 13 86% - 95% 5* 96% - 100% <small>* 3 districts contain 100% of the previous district population.</small>	None	None	0 VTDs are split. 23 cities are split. 19 counties are split.	Plan contains 40 districts. All districts are contiguous. Roeck = 0.22 min. 0.60 max.	Discussed in joint Senate caucus 2/7/02. As compared with 2004 A, assignments differ in 48 counties.
<b>Senate 2004 C</b> (Senate Reapportionment Committee, Sub. SB 379)	K-Population VTDs and Census blocks.	<b>8.75% overall</b> -2,908 to 2,938 people, or -4.35% to 4.40%	The highest percent non-Hispanic Black population ranges from 44.9% - 46.1% in the 4th district. Corresponding voting age population in the district is 43.1% - 43.8%.  The highest Hispanic population is 36.0% in the 39th district. Hispanic voting age population in the district is 30.5%.	# Dists. % 1 <=50% 10 51% - 75% 4 76% - 85% 14 86% - 95% 11* 96% - 100% <small>* 6 districts contain 100% of the previous district population.</small>	Two: districts 7 and 40	Two: districts 8 and 36	11 VTDs are split. 2 VTD splits involve no population. 20 cities are split. 23 counties are split.	Plan contains 40 districts. All districts are contiguous. Roeck = 0.21 min. 0.60 max.	Plan reported to the Senate by the Senate Committee 2/11/02.

Plan Name (Author/Bill No.)	Geography Basis	Max. to Min. and Overall	Population <sup>1)</sup>	District Population Core (Primary source district) <sup>2)</sup>	More than one Incumbent	With No Incumbent	Compactness <sup>4)</sup>	Notes	
<b>Senate Plan 12</b> (Senate COW; Sub. SB 379, as amended; vetoed 3/5/02)	K-Population VTDs and Census blocks.	<b>9.86% overall</b> -3,271 to 3,316 people, or -4.90% to 4.96%	The highest percent non-Hispanic Black population ranges from 52.2% - 53.6% in the 4th district. Corresponding voting age population in the district is 49.3% - 50.2%.  The highest Hispanic population is 35.8% in the 39th district. Hispanic voting age population in the district is 30.4%.	<b># Dists. %</b> 2 <=50% 5 51% - 75% 9 76% - 85% 15 86% - 95% 9* 96% - 100%  * 3 districts contain 100% of the previous district population.	Two: districts 7 and 36	Two: districts 8 and 37	1 VTD is split. The split involves no population. 22 cities are split. 23 counties are split.	Plan contains 40 districts. All districts are contiguous. Roeck = 0.21 min. 0.60 max.	Floor amendment offered on 2/13/02 by Senator Pugh. The amendment was adopted and the bill was passed as amended. As compared to 2004 C, assignments differ in 45 counties.
<b>Senate Plan 21</b> (Senator Hensley)	K-Population VTDs and Census blocks.	<b>9.69% overall</b> -3,158 to 3,316 people, or -4.73% to 4.96%	The highest percent non-Hispanic Black population ranges from 51.4% - 52.7% in the 4th district. Corresponding voting age population in the district is 48.8% - 49.6%.  The highest Hispanic population is 35.8% in the 39th district. Hispanic voting age population in the district is 30.4%.	<b># Dists. %</b> 1 <=50% 6 51% - 75% 9 76% - 85% 14 86% - 95% 10* 96% - 100%  * 2 districts contain 100% of the previous district population.	One: district 36	One: district 37	1 VTD is split. The split involves no population. 18 cities are split. 21 counties are split.	Plan contains 40 districts. All districts are contiguous. Roeck = 0.21 min. 0.60 max.	Plan presented in the Senate Committee by Senator Hensley March 20-21, 2002.

1) Non-Hispanic Black population ranges are established by the single race non-Hispanic Black population category at the low end and the sum of all multirace categories that include non-Hispanic Black at the high end. Among existing Senate districts, District 4 has the highest percentage non-Hispanic Black population at 52.3% - 53.5%. The corresponding voting age population (18 years of age and older) of that district ranges from 50.0% - 50.8%.

Among existing districts, Senate District 39 has the highest Hispanic population at 36.0%. The corresponding voting age population in that district is 30.5%.

2) For each proposed district, one can identify a primary source district, that is, the district from which the largest block of population comes. That primary source district may not always have the same district number as the new district.

3) The existing Senate districts split 21 counties. When enacted, the 1992 Senate districts split 7 VTDs. Those split VTDs were in Shawnee (5), Sedgwick (1), and Sumner (1) counties.

4) The Roeck measure is an area-based measure that compares each district to a circle, which is considered to be the most compact shape possible. For each district, the Roeck test computes the ratio of the area of the district to the area of the minimum enclosing circle for the district. The measure is always between 0 and 1, with 1 being the most compact. The Roeck test computes one number for each district and the minimum, maximum, mean, and standard deviation for the plan. For the current Senate districts (1992) the minimum is 0.31 and the maximum is 0.63.

2-17