

MINUTES OF THE SENATE COMMITTEE ON WAYS AND MEANS.

The meeting was called to order by Chairperson Steve Morris at 10:40 a.m. on January 31, 2001, in Room 123-S of the Capitol.

All members were present except: All present

Committee staff present:

Alan Conroy, Chief Fiscal Analyst, Kansas Legislative Research Department
Debra Hollon, Kansas Legislative Research Department
Amory Lovin, Kansas Legislative Research Department
Michael Corrigan, Assistant Revisor, Office of Revisor of Statutes
Julie Weber, Administrative Assistant to the Chairman
Mary Shaw, Committee Secretary

Conferees appearing before the committee:

Janet Schalansky, Kansas Department of Social and Rehabilitation Services

Others attending: See attached guest list

Chairman Morris welcomed Janet Schalansky, Secretary, Kansas Department of Social and Rehabilitation Services, who presented an overview of the Agency (Attachment 1). Secretary Schalansky showed a video titled, "Faces of the Kansas Department of Social and Rehabilitation Services". In closing, Secretary Schalansky explained the following from her presentation:

- Highlights for FY 2002, Key Policy Initiatives
- Highlights for FY 2002, Key Budget Investments
- Emerging Issues

Committee questions and discussion followed regarding the waiting lists, waivers, Medicaid concerning Foster Care children and Ticket to Work individuals, prescription drugs and Medicare on what the Federal Government will do and case management to aid in controlling the costs. Chairman Morris mentioned to Secretary Schalansky that the week prior the Committee had a hearing on the Claims Bill, **SB 57**. The Chairman asked Secretary Schalansky her perspective regarding the claim against SRS in the amount of \$32,000 that is listed in the bill. Secretary Schalansky explained the situation and mentioned that she felt that SRS did appropriately what they were supposed to do. She mentioned that SRS does not support the claim against them. Chairman Morris thanked Secretary Schalansky for her good overview and presentation before the Committee.

The meeting was adjourned at 11:50 a.m. The next meeting is scheduled for February 1, 2001.

Senate Ways and Means Committee

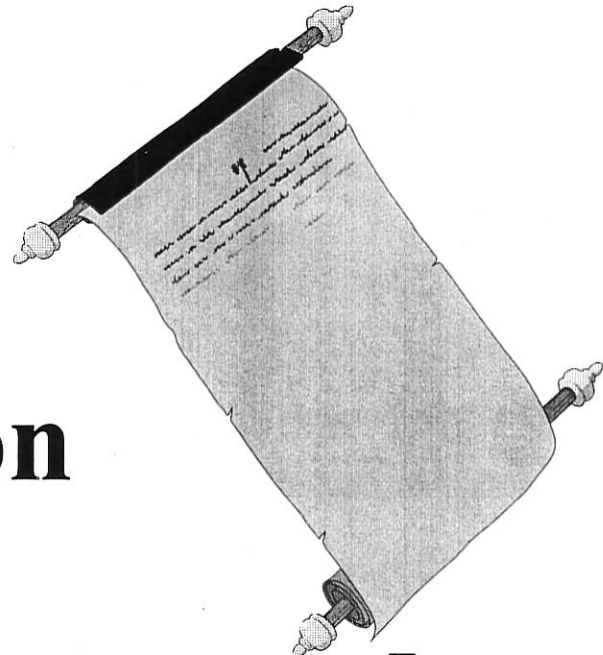
Agency Overview

Janet Schalansky, Secretary

January 31, 2001

Kansas Department of Social and Rehabilitation Services

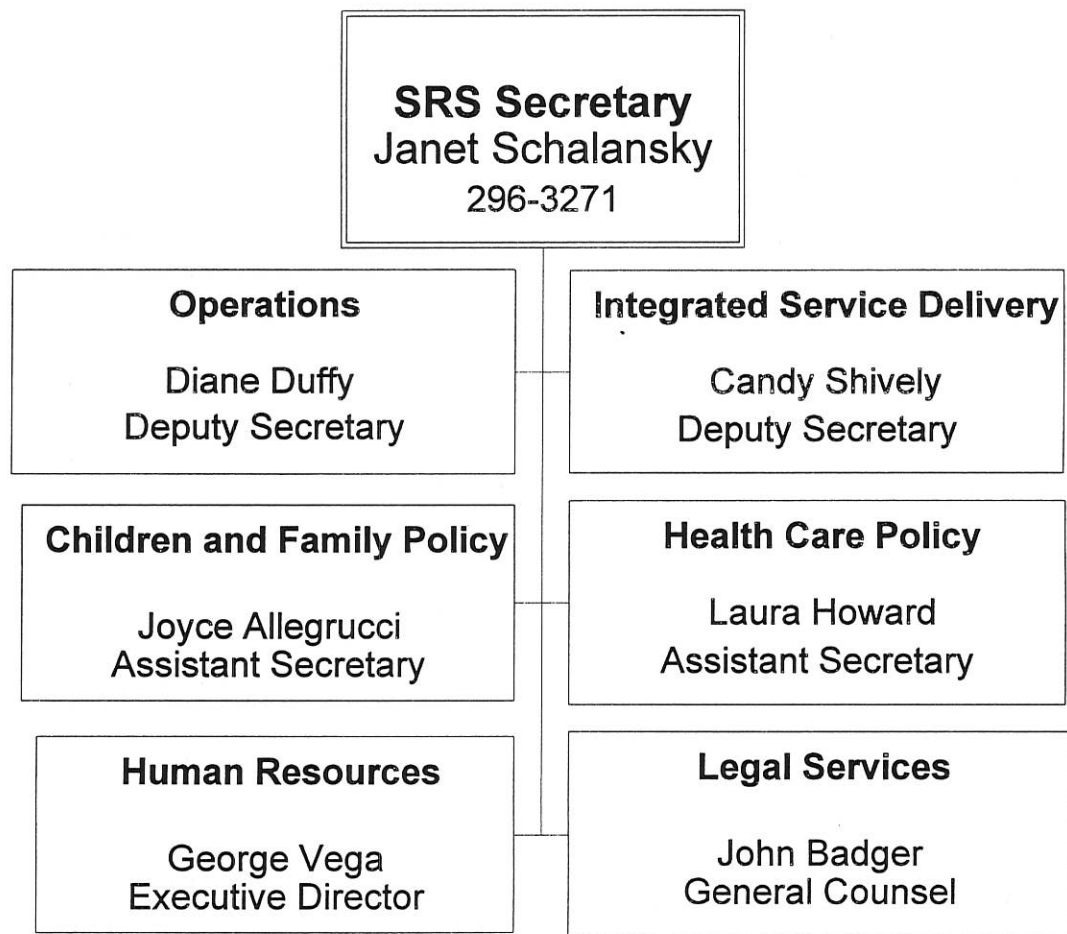
Senate Ways and Means
1-31-01
Attachment 1



SRS Mission

To Protect Children and Promote Adult Self-Sufficiency

Department of Social and Rehabilitation Services



■ Who is SRS?

- ▶ Agency of people
- ▶ Agency of learners
- ▶ Agency of evolving roles

■ What is SRS?

- ▶ A leader in human services
- ▶ A major purchaser of social and medical services

■ Where Are We Headed?

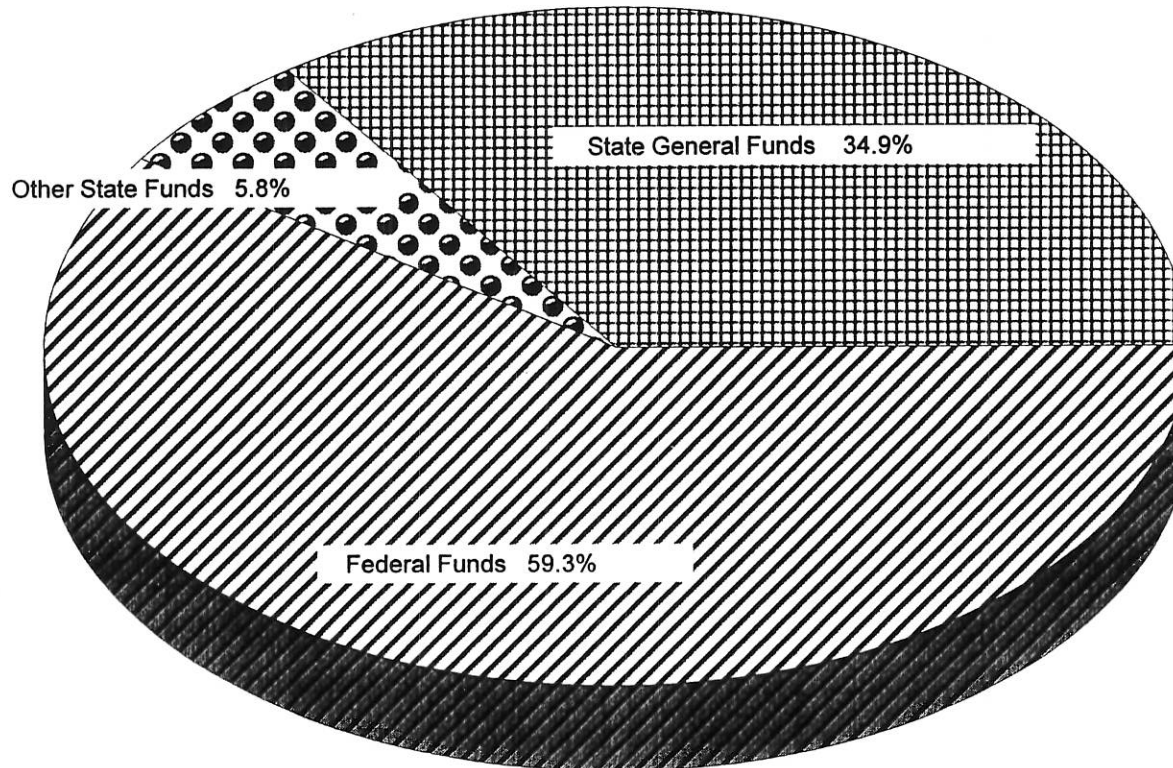
- ▶ To be a resource, not a last resort
- ▶ To be anti-bureaucratic and flexible
- ▶ To be a change agent in community systems and peoples' lives
- ▶ To be a positive and innovative employer



Faces of the Kansas Department of Social and Rehabilitation Services

SRS Expenditures by Revenue Source

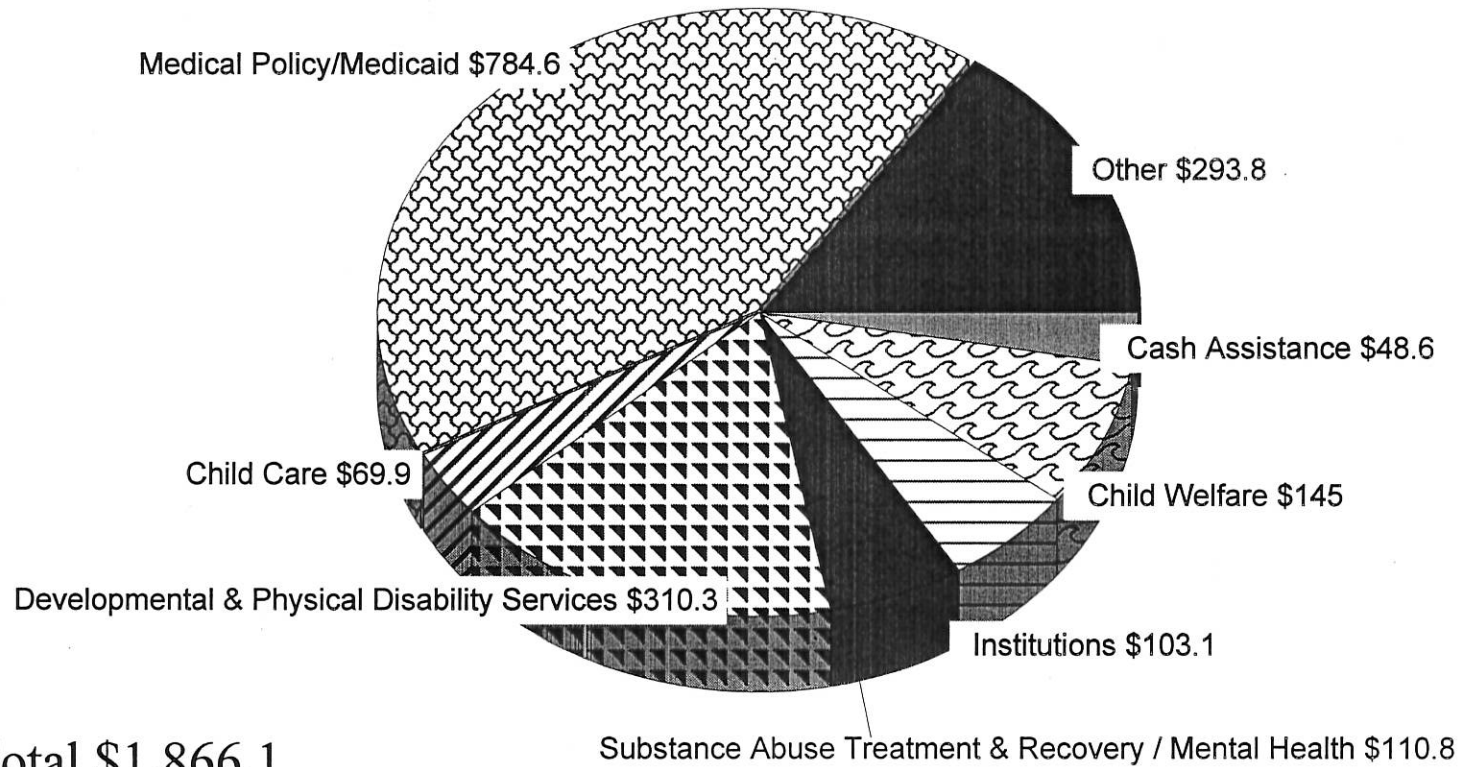
FY 2002 Budget (GBR)



Total \$1866.1 (in millions)
Totals may not add due to rounding

SRS Expenditures by Service

FY 2002 Budget (GBR)
In millions



Total \$1,866.1

Totals may not add due to rounding

Summary of Assistance and Expenditures

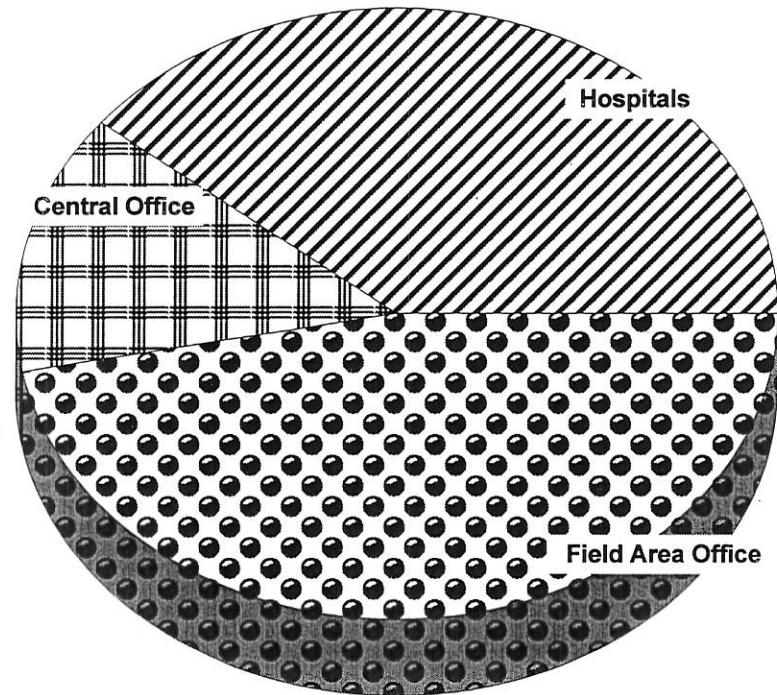
	FY 2000 Actual Number Served	FY 2000 Actual Expenditures
Kansans Receiving Cash Assistance		
Temporary Assistance for Families (TAF)	30,692	\$42.7
General Assistance	2,220	\$4.2
Refugee Assistance	17	\$0.3
Kansans Receiving Medical Assistance		
Title XIX Health Services	188,394	\$608.1
- Inpatient Hospital	4,494	\$148.9
- Outpatient Hospital	20,133	\$18.2
- Pharmacy	70,265	\$169
- Physician Services	54,078	\$57.2
- All Other Categories	39,424	\$214.8
Title XXI HealthWave	14,792	\$24.5
Mental Health Services	42,130	\$68.4
State Mental Health Hospitals	479	\$57.7
Substance Abuse Treatment and Recovery	1,083	\$14.7
Developmental Disability Services	5,477	\$216
Developmental Disability Hospitals	379	\$46.2
Other Community Based Services	3,320	\$57.3
Kansans Receiving Other Services		
Food Stamps	110,619	\$81.4
Foster Care	5,488	\$84.4
Adoption/ Alternative Permanencies	1,395	\$21.9
Child Care	14,524	\$44.2
Work Programs	7,929	\$7.0
Low Income Energy Assistance	26,143	\$9.3
Rehabilitation Services	7,718	\$22.9

(Not an all inclusive list of services)

(Millions)

SRS Full Time Employee Count

	FTE 2002
Central Office	875.8
Field Office	3,002.7
Hospitals	2520.1
Kansas Neurological Institute	655.5
Larned State Hospital	741.8
Osawatomie State Hospital	477.4
Parsons State Hospital & TC	513
Rainbow Mental Health Facility	132.4
Total	6,398.6



Highlights for FY 2002

Key Policy Initiatives



- Implementing Mental Health Initiative 2000
- Blending Medicaid and HealthWave: Creating a single health plan for low-income Kansans
- Eliminating the Waiting Period for HealthWave
- Expanding Coverage for Women Diagnosed with Breast or Cervical Cancer
- Increasing Community Access for Persons in Nursing Facilities for Mental Health (NF-MH)



Highlights for FY 2002

Key Budget Investments

- Access to Child Care Subsidy Program
- Access to Dental Care for Children
- Access to Community-Based Services for Persons with Developmental Disabilities
- Access Community-Based Services for Persons with Physical Disabilities
- Planning for Facility Needs of the Sexual Predator Treatment Program and State Security Hospital
- Support for Consensus Caseload Estimates (Financial Assistance, Foster Care, Adoption, Medicaid)

Emerging Issues

- Human Services Workforce Issues
- Changing Role of Medicaid
- Continued Welfare Reform Efforts
- Impact of Tax and Economic Policies for Low-Income Kansans
- Federal Reauthorization of Programs