

MINUTES OF THE SENATE TRANSPORTATION COMMITTEE.

The meeting was called to order by Chairperson Les Donovan at 8:30 a.m. on January 23, 2001 in Room 245-N of the Capitol.

All members were present except: Senator Pugh
Senator Schodorf

Committee staff present: Hank Avila, Legislative Research Department
Bruce Kinzie, Revisor of Statutes
Marian F. Holeman, Committee Secretary

Conferees appearing before the committee: Col. Don Brownlee, KHP

Others attending: See attached list.

Briefing and overview of agency operations

Chairman Donovan welcomed Superintendent Col. Don Brownlee and members of the Kansas Highway Patrol, then turned the meeting over to Col. Brownlee who provided members information regarding the structure and multi-functions of the agency (Attachment 1). The Agency's needs and problems in terms of personnel, equipment and funding were discussed. He also reminded members the Turnpike Authority reimburses the State for all Highway Patrol expenses incurred on/by the Turnpike.

Some members will meet individually with Col. Brownlee to discuss issues raised by their constituents. In response to expressed concerns regarding the state's radio systems' conversion to an 800 megahertz frequency; removal of existing towers when there doesn't seem to be anything workable in place; and the fact that many emergency medical services are unable to communicate on the new system; Col. Brownlee explained this matter is handled by Kansas Department Of Transportation; is really two different issues, and is an on-going process. Resolving the problem statewide carries an approximate twenty-one million dollar price tag.

In response to question of agency morale, Col. Brownlee's opinion is that morale is definitely improved. They are doing a lot to establish levels of communication; work with the bargaining unit, and take other steps to improve morale. Pay issues are always a concern. The subject of new technologies such as Global Positioning System and Global Communication System was also briefly discussed.

Col. Brownlee introduced other Highway Patrol staff present: Lt. Col. Terry Maple, Assistant Superintendent; Walter V. Darling, Fiscal Manager; 2nd Lt. John Eichkorn, Public Information Officer, and Trooper Mark Engholm, Technical Support.

Approval of minutes

Senator Harrington moved to approve minutes of the January 18, 2001 meeting. Senator Salmans seconded the motion. Motion carried.

The meeting adjourned at 9:30 a.m.

The next meeting is scheduled for January 24, 2001.

SENATE TRANSPORTATION COMMITTEE

GUEST LIST

DATE: JANUARY 23, 2001

| NAME | REPRESENTING |
|---------------|-----------------------|
| John Eichkorn | KHP |
| WALT DARLING | KANSAS HIGHWAY PATROL |
| Sabrina Malm | DOA |
| Andy Shaw | Kearney Law Office |
| | |
| | |
| | |
| | |
| | |
| | |
| | |
| | |
| | |
| | |
| | |
| | |
| | |
| | |
| | |
| | |
| | |
| | |



KANSAS STATE TROOPER

An Overview of Agency Operations



Service - Courtesy - Protection

Kansas Highway Patrol Statutory Mission



Pursuant to K.S.A. 74-2105, "The principal function of the Kansas Highway Patrol shall be enforcement of the traffic and other laws of this state relating to highways, vehicles and drivers of vehicles."

Agency Goals



Associated with and derived from our statutory mandate are the goals of the Agency:

- *To reduce the number and severity of traffic crashes*
- *To promote the use of child restraints and safety belts through enforcement and educational programs*
- *To actively enforce drinking and driving laws by employing proven DUI counter-measures such as selective enforcement and sobriety checklanes*
- *To vigorously pursue, apprehend and prosecute those who utilize Kansas highways for criminal activities*
- *To improve the quality of our service and enforcement activities*
- *To enhance public relations through local community involvement in schools, civic organizations and businesses*

KHP Operations

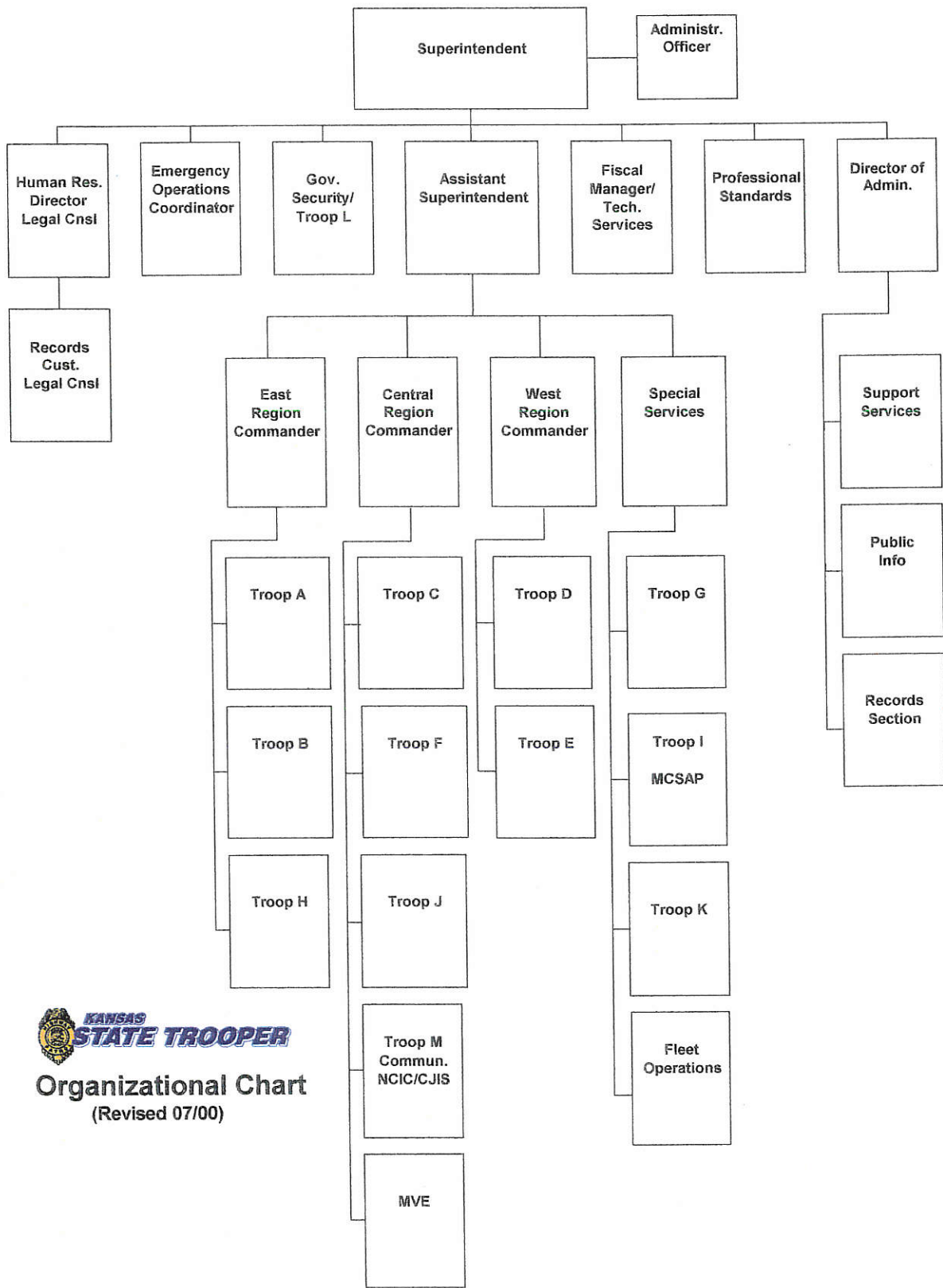


*Kansas Highway Patrol
Emergency Cellular Number
*47 (*HP)*



Kansas troopers typically patrol the highways of our state enforcing traffic laws, investigating traffic crashes and assisting stranded motorists. Consistent with State statute and the Patrol's traffic safety related goals, the complexity of traffic enforcement operations of today have necessitated the utilization of specially trained troopers in addition to those who normally work the road. These specialty groups provide invaluable support services to the Patrol itself as well as to other law enforcement agencies.

During 2000, Troopers patrolled over 10 million miles of Kansas highway and came into contact with more than 350,000 motorists.




KANSAS STATE TROOPER
Organizational Chart
 (Revised 07/00)

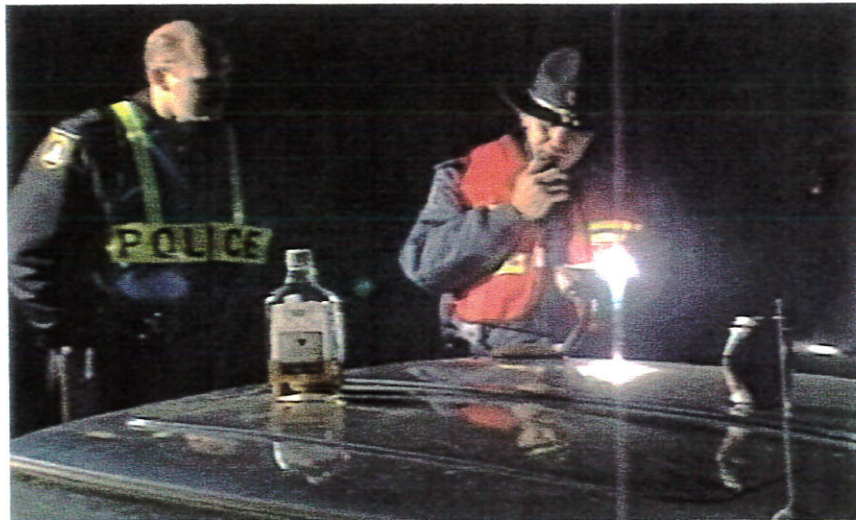
1-4

Aircraft



Pilots utilize the Patrol's three airplanes and three helicopters to support other patrol units and to assist other public safety agencies. Two Forward Looking Infra-Red aircraft cameras, one in Topeka and the other in Salina, are used to locate people and objects at night.

Breath Alcohol Unit



Members train troopers and local law enforcement officers in the recognition and testing of impaired drivers.

During 2000, Troopers removed more than 2,800 Intoxicated drivers from Kansas highways.

Critical Highway Accident Response Team (CHART)



Members conduct in-depth investigations and reconstructions of serious collisions, such as those that involve multiple fatalities or commercial motor vehicles.

Members of CHART conducted lengthy reconstructions of 86 serious collisions during 2000

Criminal Interdiction



Troopers are specially trained in the detection of illegal drugs and their assets being transported on Kansas highways.

During 2000, Troopers seized over 16,600 pounds of marijuana and 366 pounds of cocaine during traffic stops.

Motor Carrier Safety Assistance Program (MCSAP)



This federally funded program provides Troopers who inspect commercial motor vehicles for compliance with federal safety requirements and enforce regulatory requirements of the Kansas Corporation Commission.

Members of the Patrol conducted nearly 27,000 Safety Inspections of Commercial Motor Vehicles during 2000.

Motor Vehicle Enforcement



To discourage auto theft, members of the MVE Program confirm vehicle identification numbers (V.I.N.) on vehicles being titled in Kansas that were previously titled in another state or country.

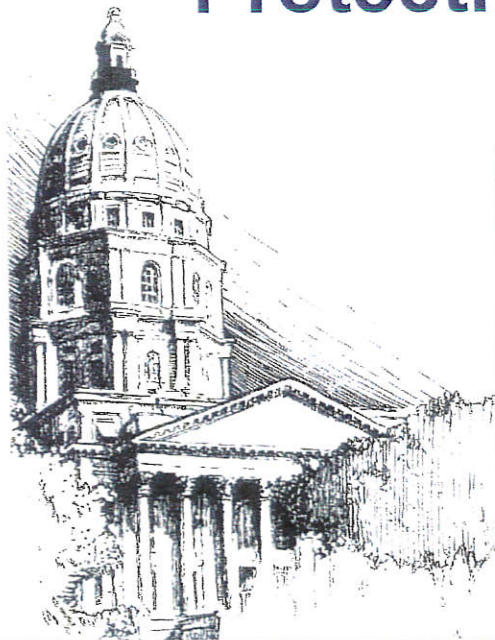
During 2000, Troopers recovered 293 Stolen Vehicles.

Police Service Dog Unit (K-9)



Members are assigned dogs trained to detect explosives and narcotics. The canines are also cross-trained in patrol tactics to assist troopers in controlling and tracking suspects.

Protective Operations



Members are responsible for transporting the Governor and providing him with personal protection. Transportation and security is also provided to the Governor's family, Lieutenant Governor and visiting dignitaries.

Public Resource Officers



Public Resource Officers assigned to each of the Patrol's 7 field troops make safety presentations to schools and community groups, serve as public information officers and assist with recruiting.

More than 120,000 Kansans attended safety programs given by members of the Patrol in 2000.

Special Response Team (SRT)



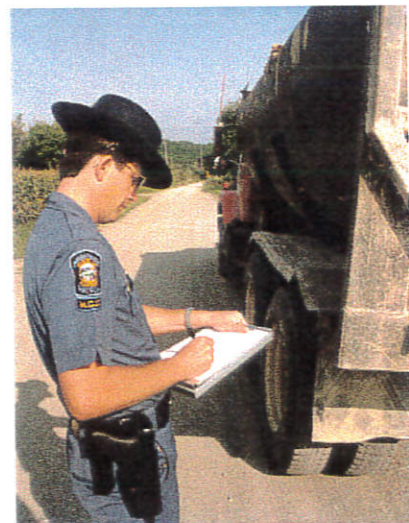
Members of the Special Response Team assist Patrol units and other agencies in activities such as marijuana eradication, serving high-risk warrants, dealing with barricaded subjects and hostage situations. Troopers who serve on the SRT are assigned to regular patrol districts and respond when summoned to special incidents.

Capitol Police



The Capitol Police is a full-service law enforcement agency providing protection for state employees and state owned or leased property in Shawnee County. Members include an investigator, explosives detection canine handler, bicycle officers, patrol units and Guards who serve as a visible security presence.

Motor Carrier Inspection



Motor Carrier Inspectors enforce traffic laws pertaining to commercial vehicles, oversize loads and registration of certain motor vehicles. In addition to mobile inspectors, the Patrol maintains motor carrier inspection / weigh stations along major highways.

Motorist Assistance



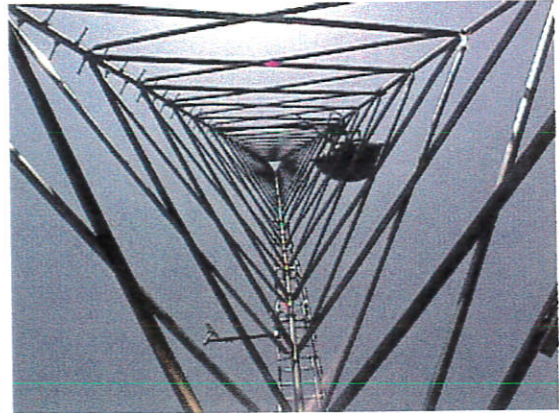
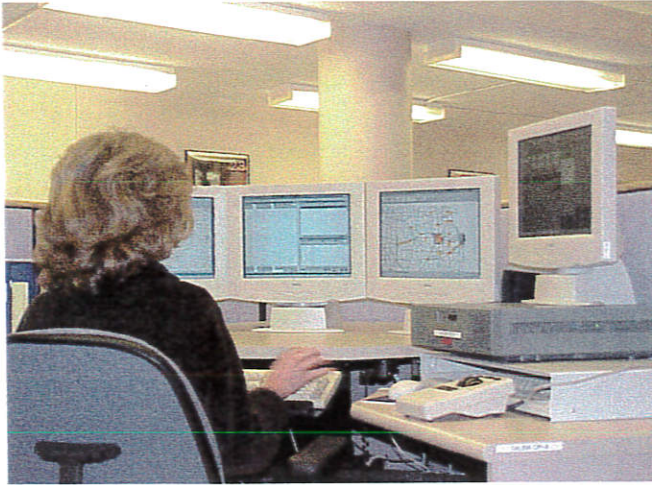
In partnership with the Kansas Department of Transportation, the Patrol provides Motorist Assistance Vehicles in the Kansas City, Wichita and Topeka metro areas. Civilian Technicians aid motorists and assist in traffic incident management by removing disabled and abandoned motor vehicles from the roadway.

Emergency Management



Members of the Emergency Management Section assist Patrol staff in accomplishing the agency's primary goal of public safety in the event of a state emergency. Members maintain liaison with the Kansas Department of Emergency Management and other emergency preparedness personnel. The Patrol has responded to a number of major incidents in the past year, including the Amtrak passenger train crash in Osage County and the Tornado that struck Parsons.

Central Communications

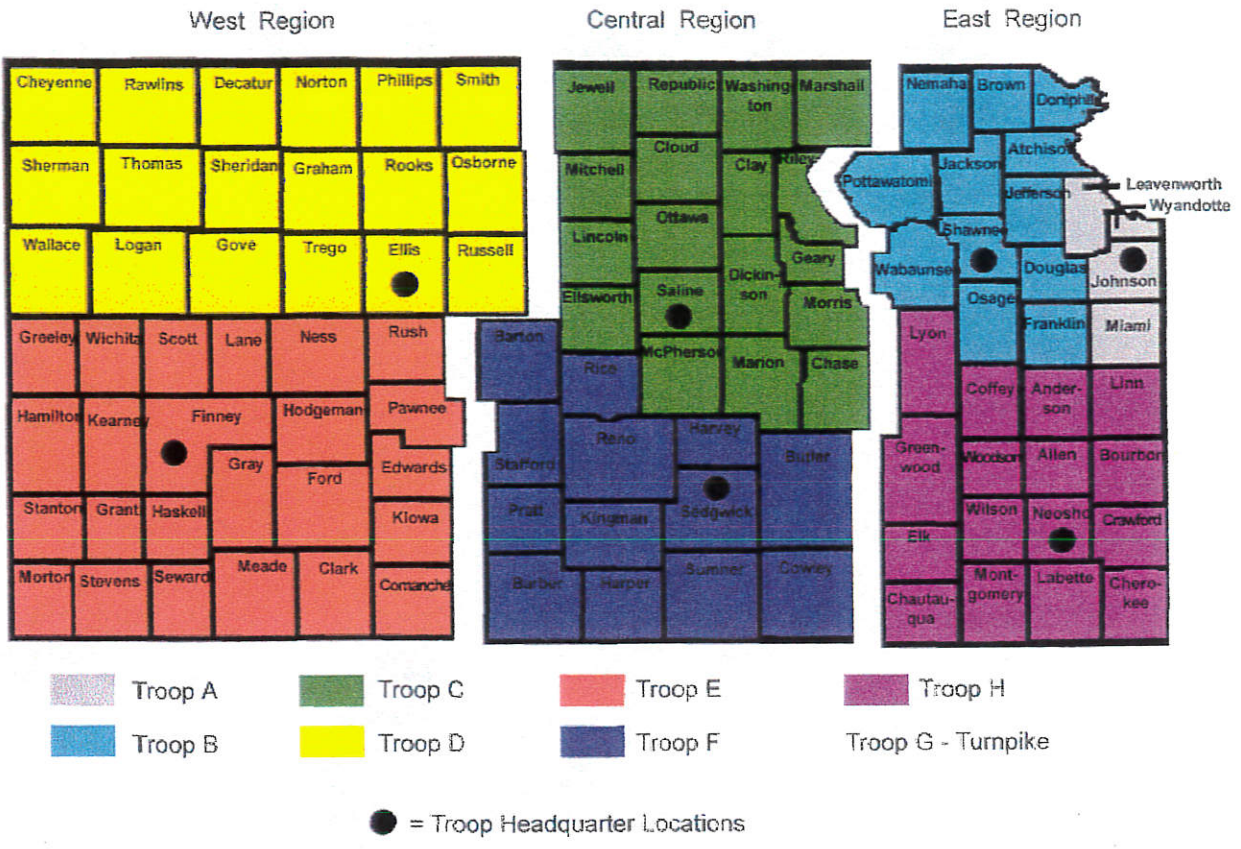


Located with the Patrol's Training Academy and Troop C Headquarters on the old Marymount College campus in Salina, the Central Communications facility provides radio dispatch services for state law enforcement agencies across Kansas. Currently, 5 of the Patrol's 7 field Troops are dispatched from the facility full-time, with the other two troops handled on a part-time basis. Eventually, all Patrol communications will be handled from the modern Central Communications facility.

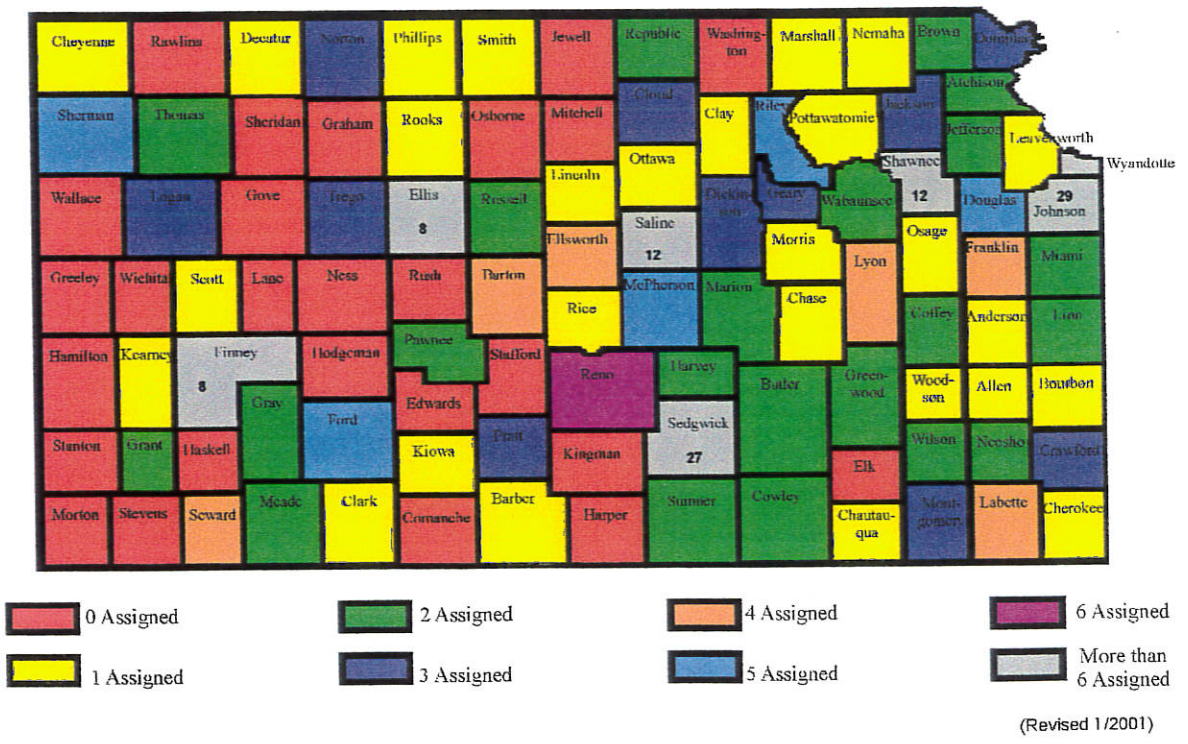
Training Academy



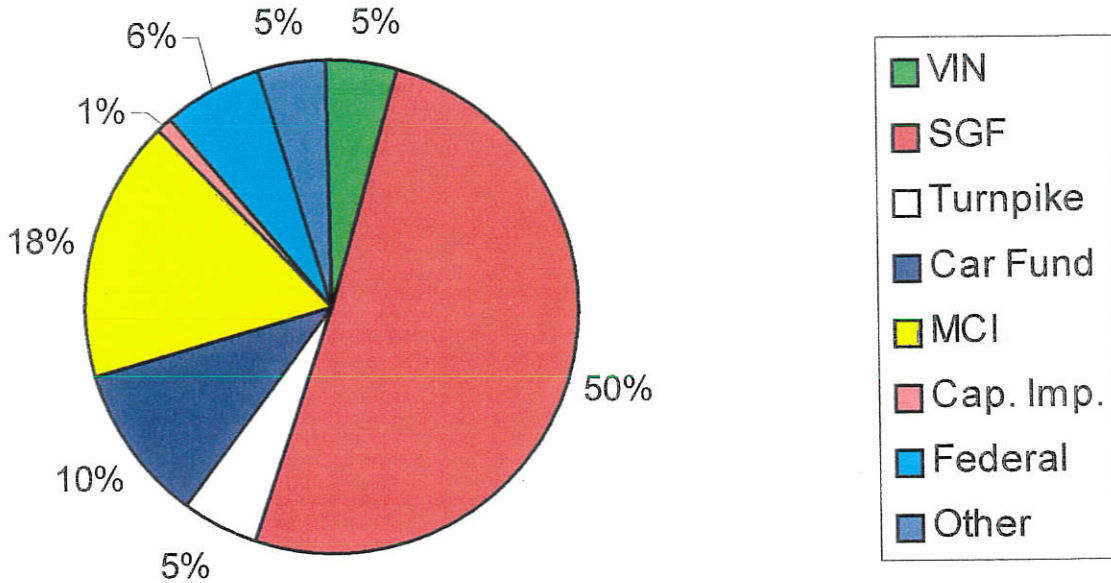
The Patrol's Training Academy is tasked with providing 22 weeks of basic training for all recruit troopers before they begin field training in their assigned district. In addition, the academy conducts in-service training for Patrol personnel and other law enforcement agencies. The Training Academy is also utilized regularly by other state and local agencies for meetings and seminars.



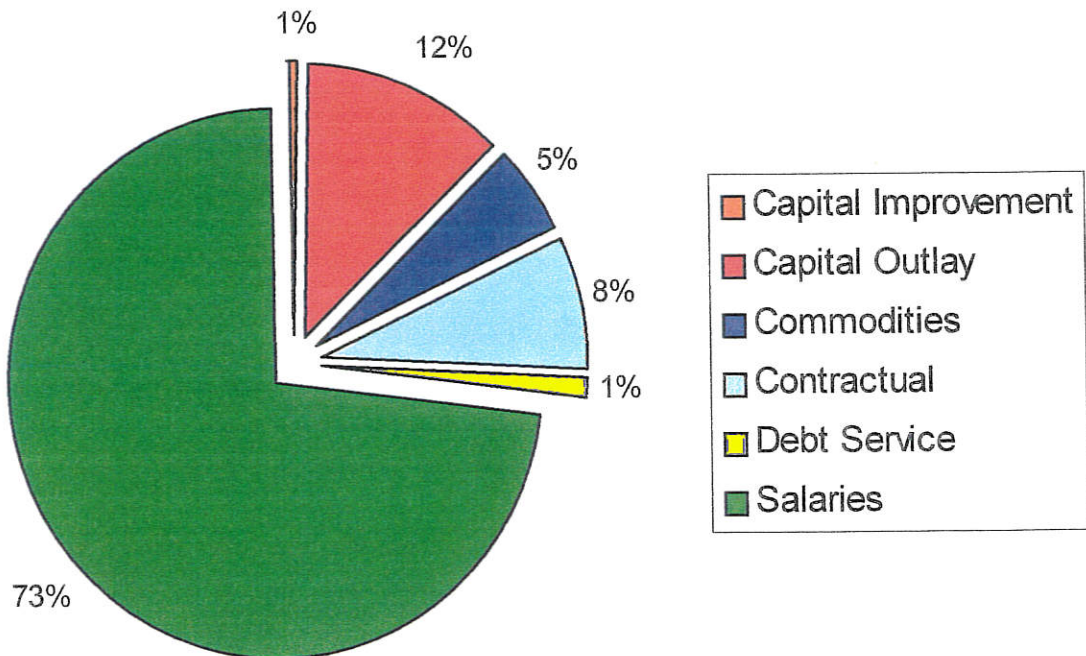
KHP Field Staffing by County



KHP Budget Sources



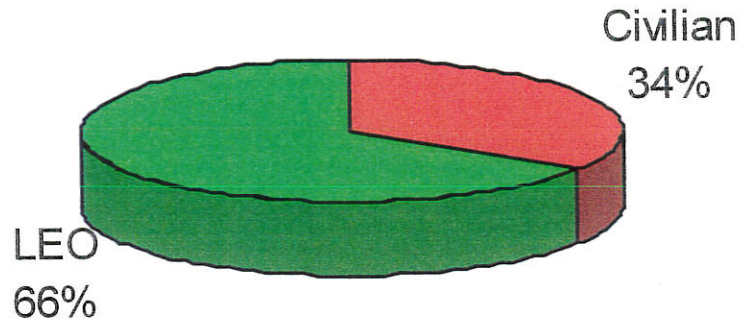
KHP FY2001 Budget Expenditures



1-14

KHP Staffing

Law Enforcement v. Civilian Staff



KHP Staffing

By Major Division

