

Approved: 3-13-01
Date

MINUTES OF THE SENATE COMMITTEE ON PUBLIC HEALTH & WELFARE.

The meeting was called to order by Chairperson Senator Susan Wagle at 1:30 p.m. on January 30, 2001 in Room 231-N of the Capitol.

All members were present except:

Committee staff present: Mr. Hank Avila, Legislative Research Department
Ms. Renae Jefferies, Revisor of Statutes
Ms. Lisa Montgomery, Revisor of Statutes
Ms. Margaret Cianciarulo, Committee Secretary

Conferees appearing before the committee: Ms. Janet Schlansky, Secretary, Kansas Department of Social and Rehabilitation Services

Others attending: See attached guest list.

Chairperson Wagle opened the meeting inquiring of any committee bill requests.

Overview of Kansas Department of Social and Rehabilitation Services

The meeting opened with Chairperson Wagle stating that this was the last of the scheduled overview presentations. Ms. Janet Schlansky, Secretary, Kansas Department of Social & Rehabilitation Services made the presentation. Highlights of her overview on the SRS Agency included their mission, their roots, central functions, expenditures, keyed policy initiatives and budget investments. She also introduced members of her staff who were in the audience. A copy of her testimony is (Attachment #1) attached hereto and incorporated into the Minutes by reference.

A questions and comments discussion followed between Senators Barnett, Steineger, Harrington, Salmans and Brungardt and Secretary Schlansky ranging from added tax, cooperative spirit to reducing the waiting list of head injury waivers.

Introduction of bills

Chairperson Wagle asked the Committee to work **SB 64**, HIV and AIDS reporting. Ms. Renae Jefferies, Revisor of Statutes, introduced a revision from Mr. Tom Bell of the Kansas Hospital Association who pointed out that the term "hospital" used in the original bill has no defined meaning while the term "medical care facility" is defined in KSA 2000 Supp. 65-425. Senator Haley motioned that the Committee work the bill as amended, it was seconded by Senator Brungardt and the motion carried.

Chairperson Wagle offered a bill (Irs0396) concerning the behavioral sciences regulatory board; investigations and procedures conducted by the board; access to evidence; issuance of subpoenas; confidentiality of information and amending K.S.A. 74-7508 and repealing the existing section. The proposed bill was placed before the Committee. Senator Praeger made the motion to introduce the proposed bill. Senator Barnett seconded the motion and the motion carried.

Adjournment

Request was made for further bills or business, and with none coming forth the meeting was adjourned. The time was 2:30 p.m.

The next meeting is scheduled for January 31, 2001.

SENATE PUBLIC HEALTH AND WELFARE COMMITTEE

2 in att.

GUEST LIST

DATE: Tuesday, January 30, 2001

NAME	REPRESENTING
Tim Wood	Cowlee Consulting Group
Pam Antione	Health Midwest
Nancy Pierce	Ks Health Care Assoc
Judy Eyerly	Ks Assn for Medically Underserved
Lynda Foster	Kansas Farm Bureau - Bourbon Co.
Judy Roewe	SRS
Lana Howard	SRS
Candy Okun	SRS
Dene Dohy	SRS
George Vega	SRS
Wren Mull	Kathy Dammert Assoc.

Senate Public Health and Welfare Committee

Agency Overview

Janet Schalansky, Secretary

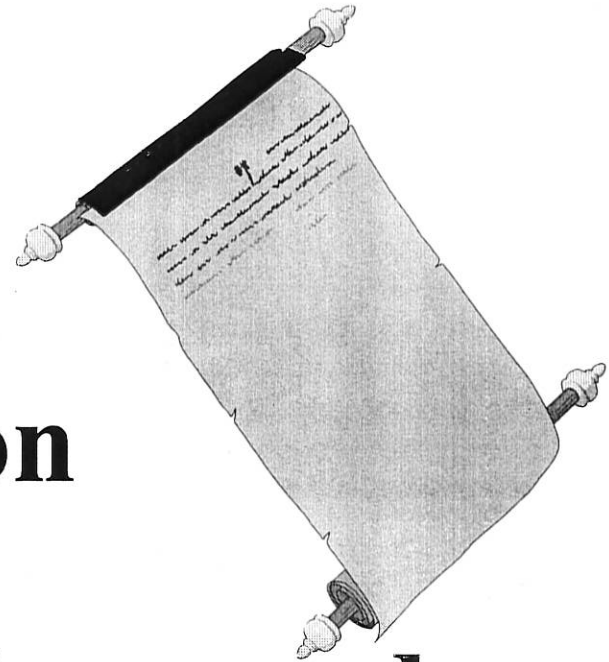
January 30, 2001

Kansas Department of Social and Rehabilitation Services

Senate Public Health & Welfare Committee
Meeting Note 1-30-01
Attachment 1-1

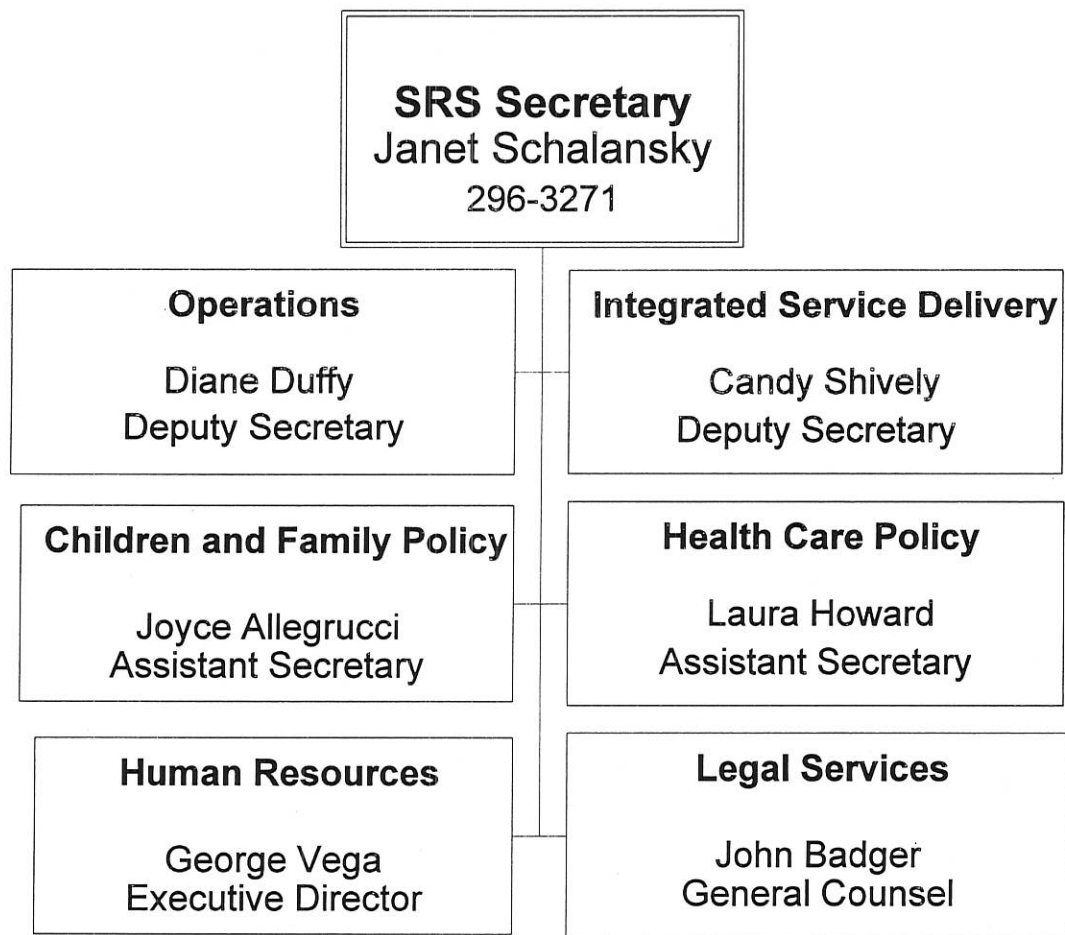
SRS Mission

**To Protect Children and
Promote Adult Self-Sufficiency**



attachment 1-2

Department of Social and Rehabilitation Services



attachment 1-3

■ Who is SRS?

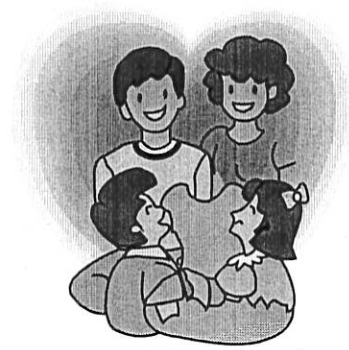
- ▶ Agency of people
- ▶ Agency of learners
- ▶ Agency of evolving roles

■ What is SRS?

- ▶ A leader in human services
- ▶ A major purchaser of social and medical services

■ Where Are We Headed?

- ▶ To be a resource, not a last resort
- ▶ To be anti-bureaucratic and flexible
- ▶ To be a change agent in community systems and peoples' lives
- ▶ To be a positive and innovative employer

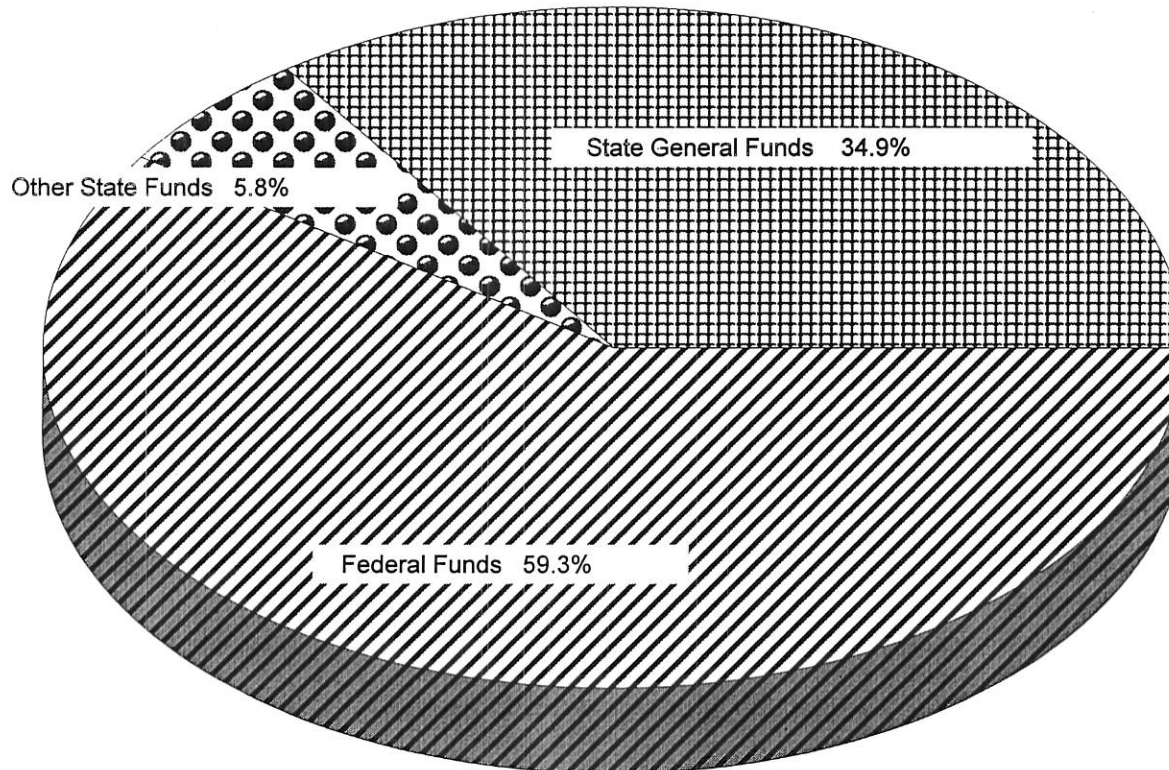


Faces of the Kansas Department of Social and Rehabilitation Services

Attachment 1-5

SRS Expenditures by Revenue Source

FY 2002 Budget (GBR)

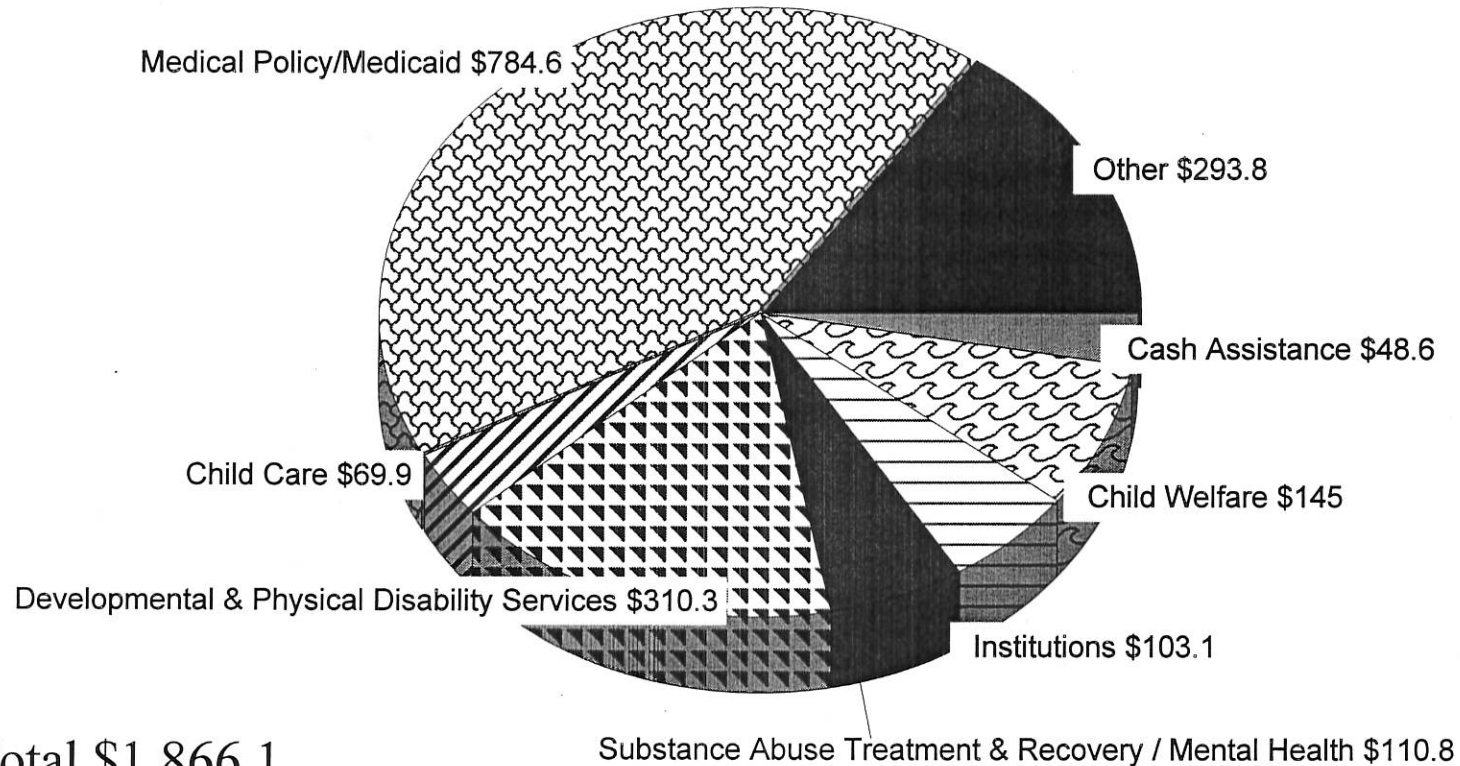


Total \$1866.1 (in millions)
Totals may not add due to rounding

SRS Expenditures by Service

FY 2002 Budget (GBR)
In millions

Attachment 1-7



Total \$1,866.1

Totals may not add due to rounding

Summary of Assistance and Expenditures

	FY 2000 Actual Number Served	FY 2000 Actual Expenditures
Kansans Receiving Cash Assistance		
Temporary Assistance for Families (TAF)	30,692	\$42.7
General Assistance	2,220	\$4.2
Refugee Assistance	17	\$0.3
Kansans Receiving Medical Assistance		
Title XIX Health Services	188,394	\$608.1
- Inpatient Hospital	4,494	\$148.9
- Outpatient Hospital	20,133	\$18.2
- Pharmacy	70,265	\$169
- Physician Services	54,078	\$57.2
- All Other Categories	39,424	\$214.8
Title XXI HealthWave	14,792	\$24.5
Mental Health Services	42,130	\$68.4
State Mental Health Hospitals	479	\$57.7
Substance Abuse Treatment and Recovery	1,083	\$14.7
Developmental Disability Services	5,477	\$216
Developmental Disability Hospitals	379	\$46.2
Other Community Based Services	3,320	\$57.3
Kansans Receiving Other Services		
Food Stamps	110,619	\$81.4
Foster Care	5,488	\$84.4
Adoption/ Alternative Permanencies	1,395	\$21.9
Child Care	14,524	\$44.2
Work Programs	7,929	\$7.0
Low Income Energy Assistance	26,143	\$9.3
Rehabilitation Services	7,718	\$22.9

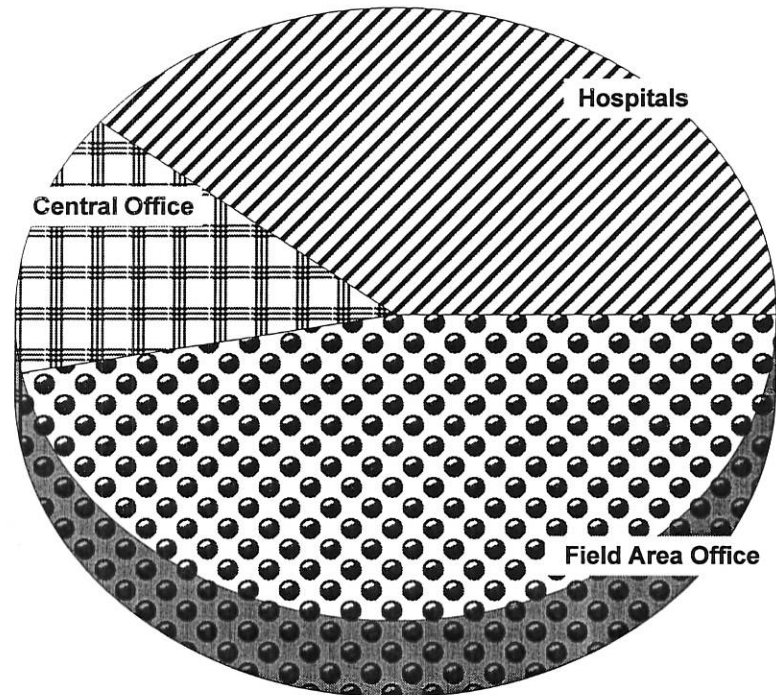
(Not an all inclusive list of services)

(Millions)

Attachment 1-8

SRS Full Time Employee Count

Central Office	FTE 2002	875.8
Field Office		3,002.7
Hospitals		2520.1
Kansas Neurological Institute		655.5
Larned State Hospital		741.8
Osawatomie State Hospital		477.4
Parsons State Hospital & TC		513
Rainbow Mental Health Facility		132.4
Total		6,398.6



Attachment 1-9

Highlights for FY 2002

Key Policy Initiatives



- Implementing Mental Health Initiative 2000
- Blending Medicaid and HealthWave: Creating a single health plan for low-income Kansans
- Eliminating the Waiting Period for HealthWave
- Expanding Coverage for Women Diagnosed with Breast or Cervical Cancer
- Increasing Community Access for Persons in Nursing Facilities for Mental Health (NF-MH)

attachment 1-10



Highlights for FY 2002

Key Budget Investments

- Access to Child Care Subsidy Program
- Access to Dental Care for Children
- Access to Community-Based Services for Persons with Developmental Disabilities
- Access Community-Based Services for Persons with Physical Disabilities
- Planning for Facility Needs of the Sexual Predator Treatment Program and State Security Hospital
- Support for Consensus Caseload Estimates (Financial Assistance, Foster Care, Adoption, Medicaid)

Attachment 1-11

Emerging Issues

- Human Services Workforce Issues
- Changing Role of Medicaid
- Continued Welfare Reform Efforts
- Impact of Tax and Economic Policies for Low-Income Kansans
- Federal Reauthorization of Programs

Attachment 1-12