

MINUTES OF THE SENATE COMMITTEE ON COMMERCE.

The meeting was called to order by Chairperson Senator Karin Brownlee at 8:30 a.m. on January 24, 2001 in Room 123-S of the Capitol.

All members were present except:

Committee staff present: April Holman, Legislative Research Department
Robert Nugent, Revisor of Statutes
Lea Gerard, Secretary

Conferees appearing before the committee: Mark Uhart, Education Market Manager-Sprint
Scott Petrie, VP Broadband Communications

Others attending: See attached list.

Mark Uhart, Education Market Manager-Sprint gave a brief summary of the essential tasks of the KAN-ED Board (Attachment 1). The telecommunications and cable industry worked together as part of the task force which met during the 2000 interim. Because of the complexity of a KAN-ED network in a cost effective manner there are some essential tasks to be completed. The KAN-ED Board can be any governing body or any organization who is assigned the responsibility for receiving information from vendors and customers. The customers are the libraries, public/private schools, technical schools and colleges and universities throughout Kansas. The task force gathers, analyzes data and assesses customer needs for a network database.

Scott Petrie, VP Broadband Communications, Cox Communications gave a presentation on the technology of KAN-ED (Attachment 2). The KAN-ED network is comprised of peering points or hub sites where local schools can inter-connect to the backbone using local providers. Scott Petrie said it was like a turnpike with entrances to the turnpike which are the toll booths or peering points.

Mr. Petrie, in response to a question on how the governing board is put together, responded it is a private/public relationship with telecommunication providers and education representatives.

In response to a question about how we insure that industry members efforts are directed at getting the school systems the best deal as opposed to wearing their corporate hat, Mr. Petrie stated it will be educating members of the board on tariffs, discounts and individual cost base pricing to ensure all members are acting in the best interest of the network.

Senator Steineger requested to see a map of Kansas that would show the cable or fiber optic assets we have. What kind of a network system does the State of Kansas have?

Meeting adjourned at 9:30 a.m.

The next meeting is scheduled for January 25, 2001 at 8:30 a.m.

KAN-ED BOARD ESSENTIAL TASKS

Senate Commerce Committee
Jan. 24, 2001
Attachment 1

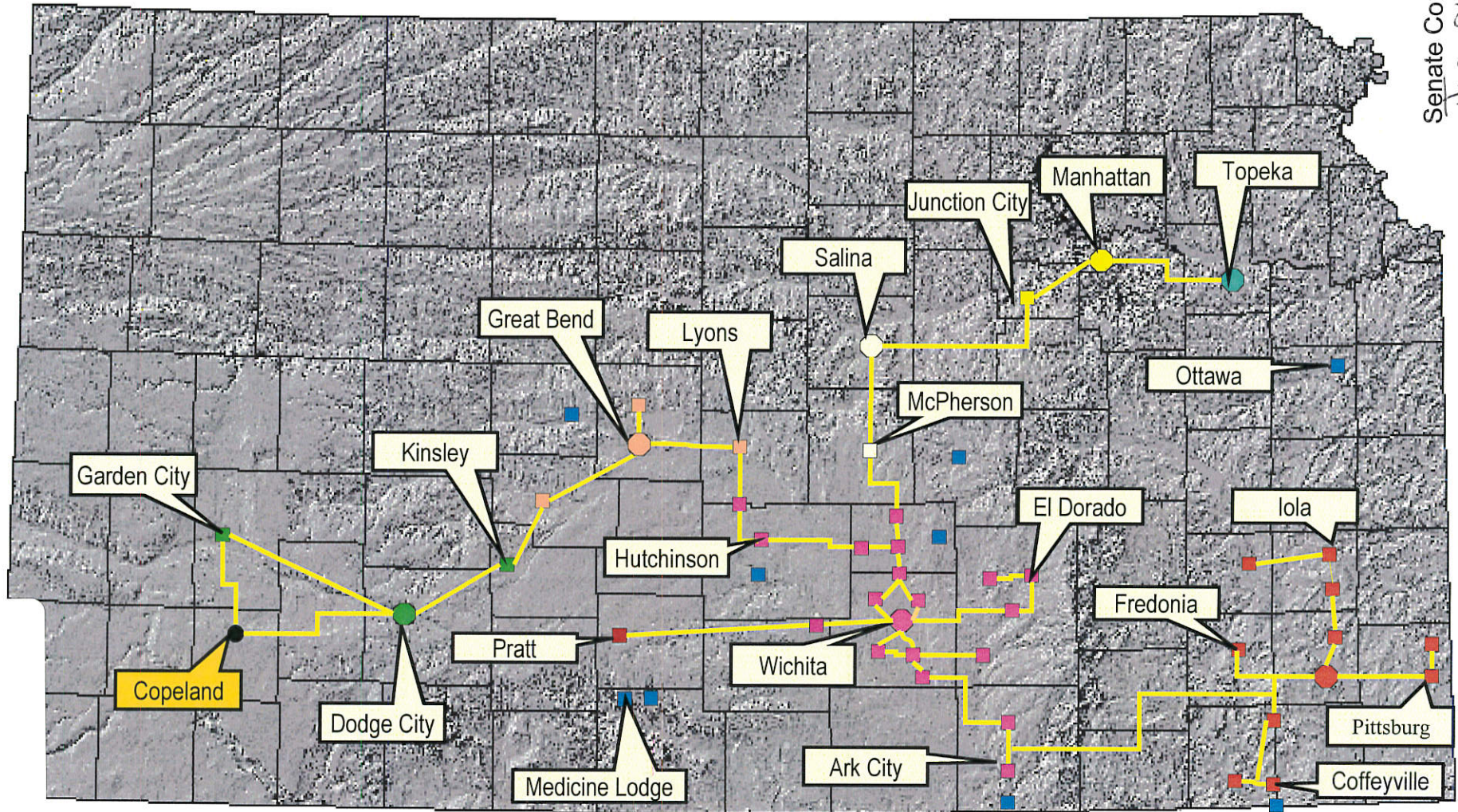
- Gather and analyze data from potential KAN-ED customers, telecomm/cable service providers, and ISPs.
- Assess customer needs (LANs, WANs, bandwidth, Internet access, interactive video, content, training, etc.)
- Develop the master needs and capabilities database.
- Primary contractor/liaison for telecomm/cable industry.
- Assess the level of E-rate participation and success in acquiring discounts for telecomm services and Internet access. Aggregate data circuit requirements.
- Establish specifications and standards for the network.
- Develop a comprehensive request for proposal (RFP).
- Manage the KAN-ED fund and operational budget.



Prepared by Mark Uhart
LTD's Education Markets Group

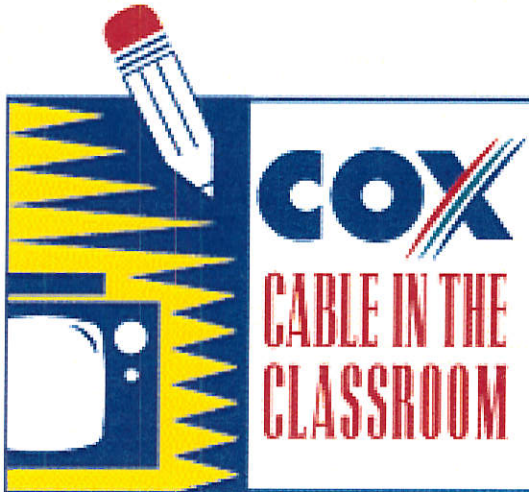
Cox's Kansas State Operations

Senate Commerce Committee
Jan. 24, 2001
Attachment 2-1



Cox's Commitment to Education

2-2



Through **Cable in the Classroom**, Cox provides over 400 local schools with free cable television service in the state of Kansas. Schools receive teacher support materials and access to the *Cable in the Classroom* monthly program guide. The program represents an investment of over \$420 million by the cable industry to enhance the resources of schools with more than 540 hours of commercial-free educational television programming each month.

Cox's commitment to Education



COX COMMUNICATIONS OFFERS FREE HIGH SPEED INTERNET TO KANSAS SCHOOLS THROUGH PROJECT K.I.D.S.

Kansas students will soon have free access to the technology of the future

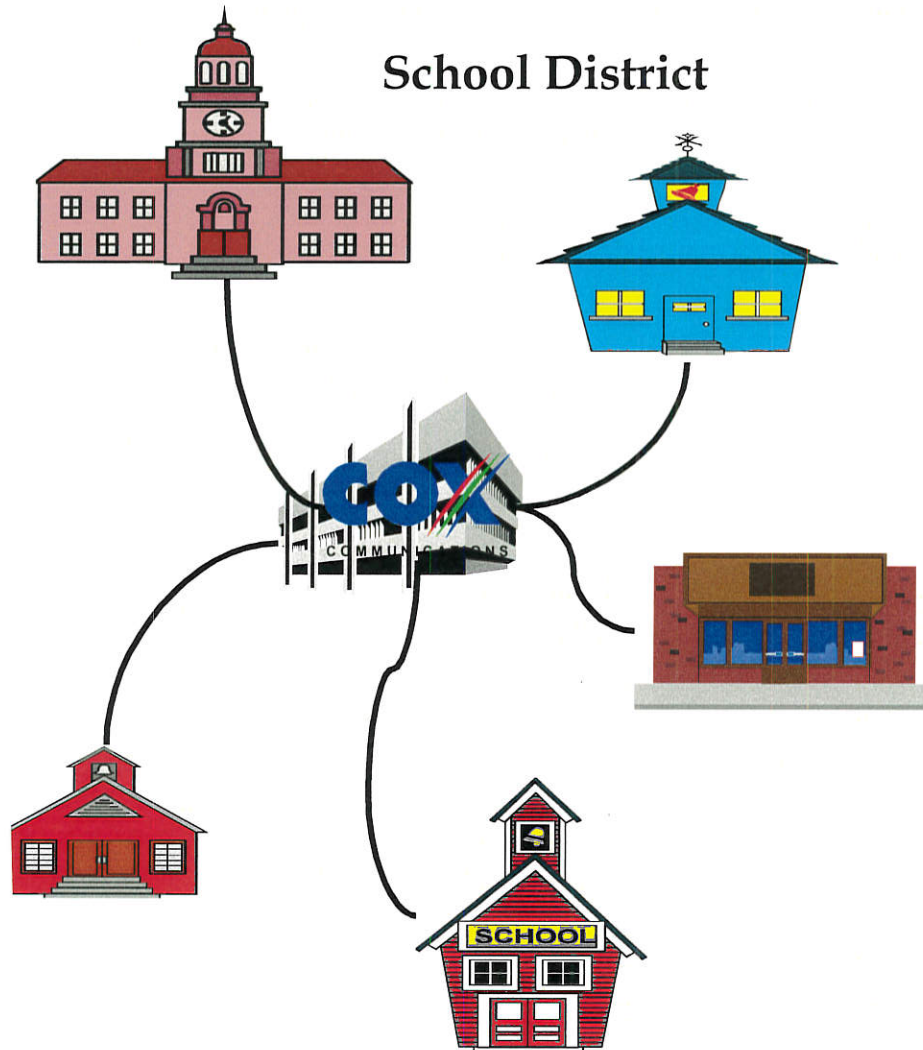
WICHITA – Kansas schools and libraries can soon connect to the future with **free high speed Internet** access from Cox Communications. Project K.I.D.S. (**K**ansas **I**nternet **D**onation for **S**chools), will provide public and private schools and libraries in Cox's service areas with free Road Runner high speed Internet service that can be fed to every computer in their buildings. The donation represents an annual commitment to the state of Kansas of more than \$3 million dollars.

Senate Commerce Committee

January 24, 2001

Wide Area Networks and Distance Learning

4-2



School District

- McPherson Schools
- Wichita Public Schools
- Newton Schools
- El Dorado Schools
- Garden City Schools
- Auburn Washburn Schools
- Pittsburg Schools
- Great Bend Schools
- Hoisington Schools
- Sedgwick Schools
- Burrton Schools
- Hutchinson Community College
- Fairfield School District
- Hesston
- Salina Public Schools

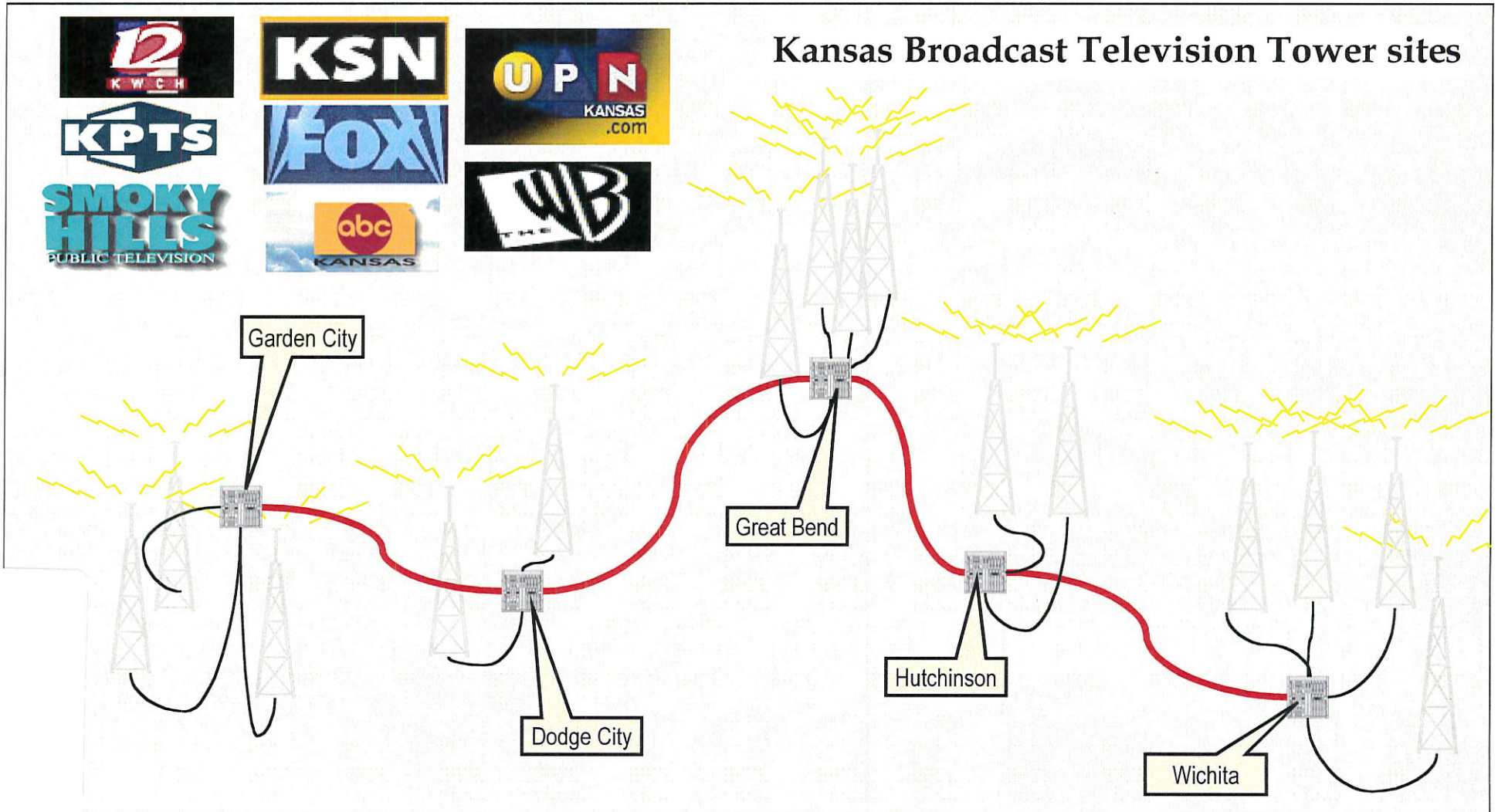
Senate Commerce Committee

January 24, 2001

Cox's Fiber Optic Network

Transports Studio Quality Video across Kansas

5-5



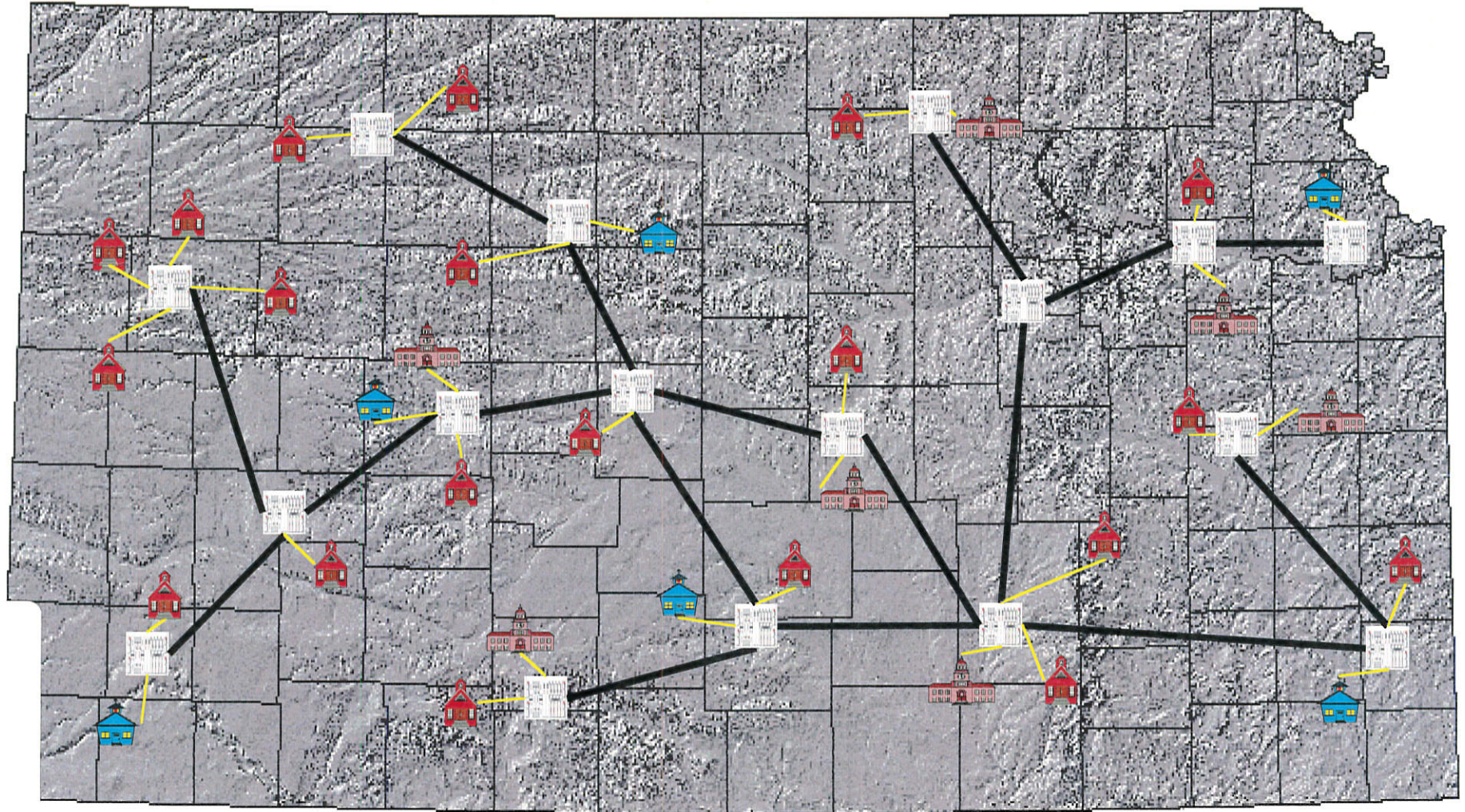
Senate Commerce Committee

January 24, 2001

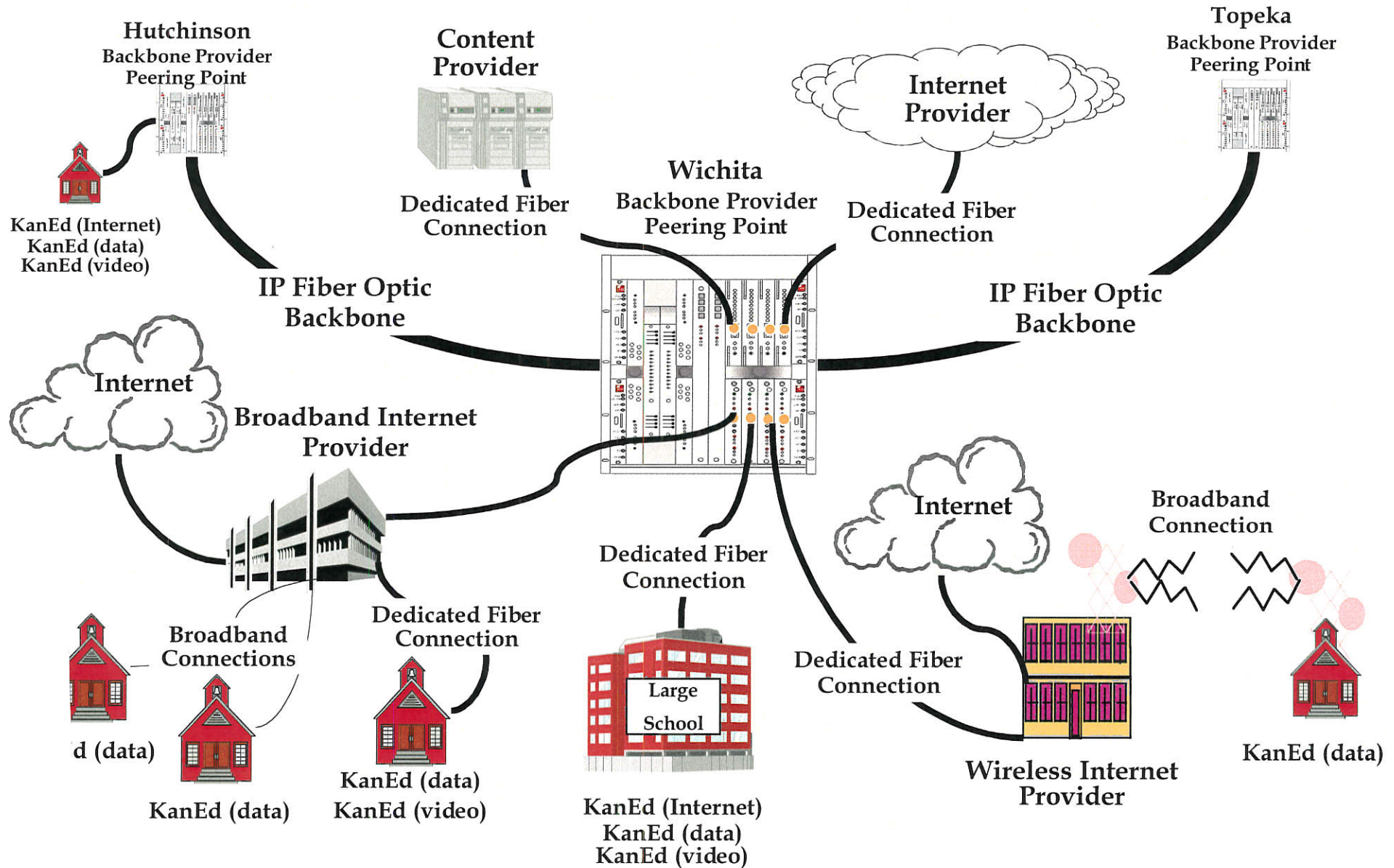
KAN-ED 10,000 FT VIEW

Strategically located "Peering Points" connected by a
Highspeed Fiber optic Backbone

2-6



A KAN-ED Simple Network Drawing

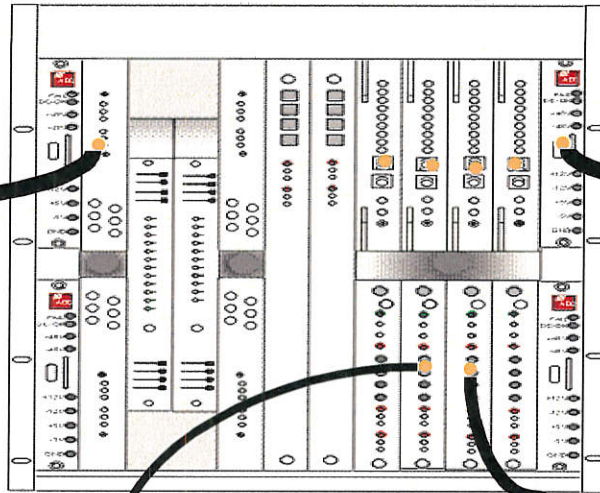


2-5

KAN-ED Peering Point a closer view

2-8

Backbone Provider Peering Point



Fiber Optic Network
To Next Peering Point

Fiber Optic Network
To Next Peering Point

KanEd (data)
KanEd (video)



Dedicated Fiber
Connection

Dedicated Fiber
Connection



KanEd (data)

KanEd (data)



COMMUNICATIONS

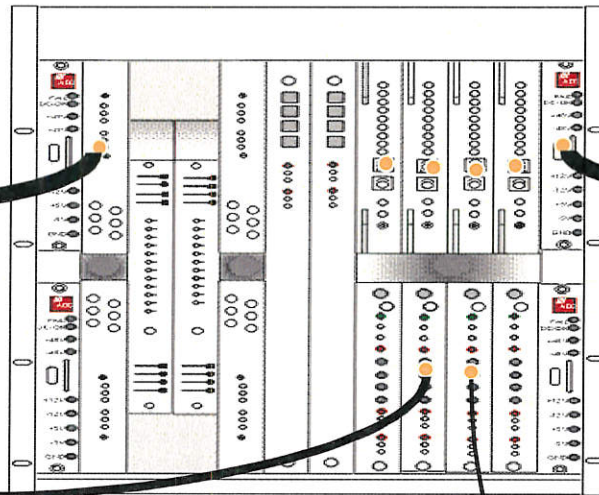
Senate Commerce Committee

January 24, 2001

KAN-ED Network Connections

Backbone Provider Peering Point

Network requires Layer 3 IP Routing for Quality of Service for IP Video



Fiber Optic Network
To Next Peering Point

Fiber Optic Network
To Next Peering Point

Specify Backbone
(size) X Gbps

Optical Transport
using Internet
Protocol (IP)

Specify Backbone
(size) XGbps

Optical Transport
using Internet
Protocol (IP)



Connections for sites
requiring Distance
Learning (IP) Video and
Data Collaboration.

Dedicated 100 Mbps
Ethernet connections to
peering point



Connections for sites
requiring Data
Collaboration only

Minimum 1 Mbps
Ethernet (IP) connections
to peering point

The KAN-ED Network

Peering Hub Points and Network Backbone:

Peering locations should be strategically located in areas where the greatest number of sites could connect.

Backbone should be all IP packet based transport using layer 3 routing for intelligent routing and QoS. (Quality of Service allows priority assignment of mission critical data such as video.)

Hub Points and Backbone need to be bid out on a link by link (2 peering points and a backbone route) basis to qualified providers in Kansas.

All Network Backbone providers must allow all qualified Local Loop providers to connect (peer) to backbone.

Bandwidth on Backbone should be upgraded as demand requires.

Local Loop Connections (2 ways to connect to the KANED network):

Data local loop connections: These should be specified at a minimum of 1 Mbps Ethernet per site.

Video local loop connections: These should be specified at 100 Mbps Ethernet with layer 3 routing for QoS.

Network Monitoring:

All Elements of the network should be SNMP manageable. Contract with a 3rd party for network management services.

Internet Services:

To preserve precious bandwidth, Internet services should only be routed on Backbone to sites that cannot reasonably obtain such services from a local provider.

010

The KAN-ED Network Oversight Board

2-11

Determine Type of Services Transported:

Two-way Interactive Video
Data Collaboration between sites
Access to Content
Internet

Determine Site Locations and User Requirements:

Work with Education, Libraries, and Rural Hospitals to determine sites and service required.

Determine Local Loop Connection specifications:

Two-way Interactive Video: (10 Mbps Ethernet with Layer 3 QoS)
Data Collaboration between sites: (minimum 1 Mbps Ethernet)
Access to Content: (minimum 1 Mbps Ethernet)
Internet: (minimum 1 Mbps Ethernet)

Work with Telecommunications Providers:

Based upon the end user site locations, work with Telecommunications Industry to determine the most efficient locations for Peering Hub sites.

Based upon the end user Services required, calculate size of Backbone between Peering Hub site locations.

The KAN-ED Network Oversight Board

2-12

RFP:

Put together Request for Proposals for all Backbone and Peering Hubsite locations and Local Loop Connections to determine costs.

Based upon RFP responses determine Total Estimated Cost of network

Determine "Flat Rate" Price Structure for Sites:

Determine how much state will pay per site

Determine how much site should pay (E-rate is applicable)

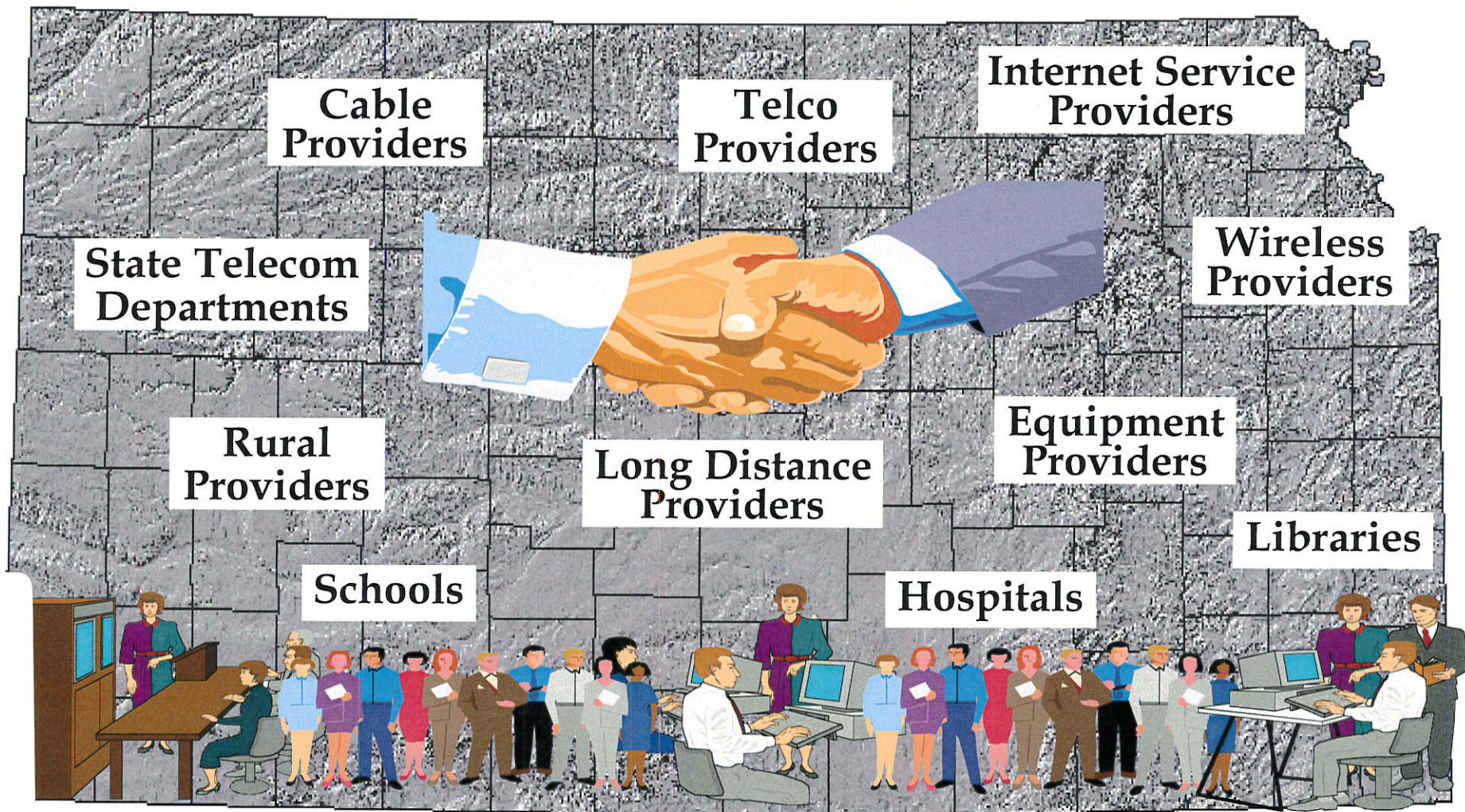
Get Commitments from Sites

Begin Formal Requests for Proposal to build network

The KAN-ED Board

Public / Private Partnerships
are REQUIRED

2-13

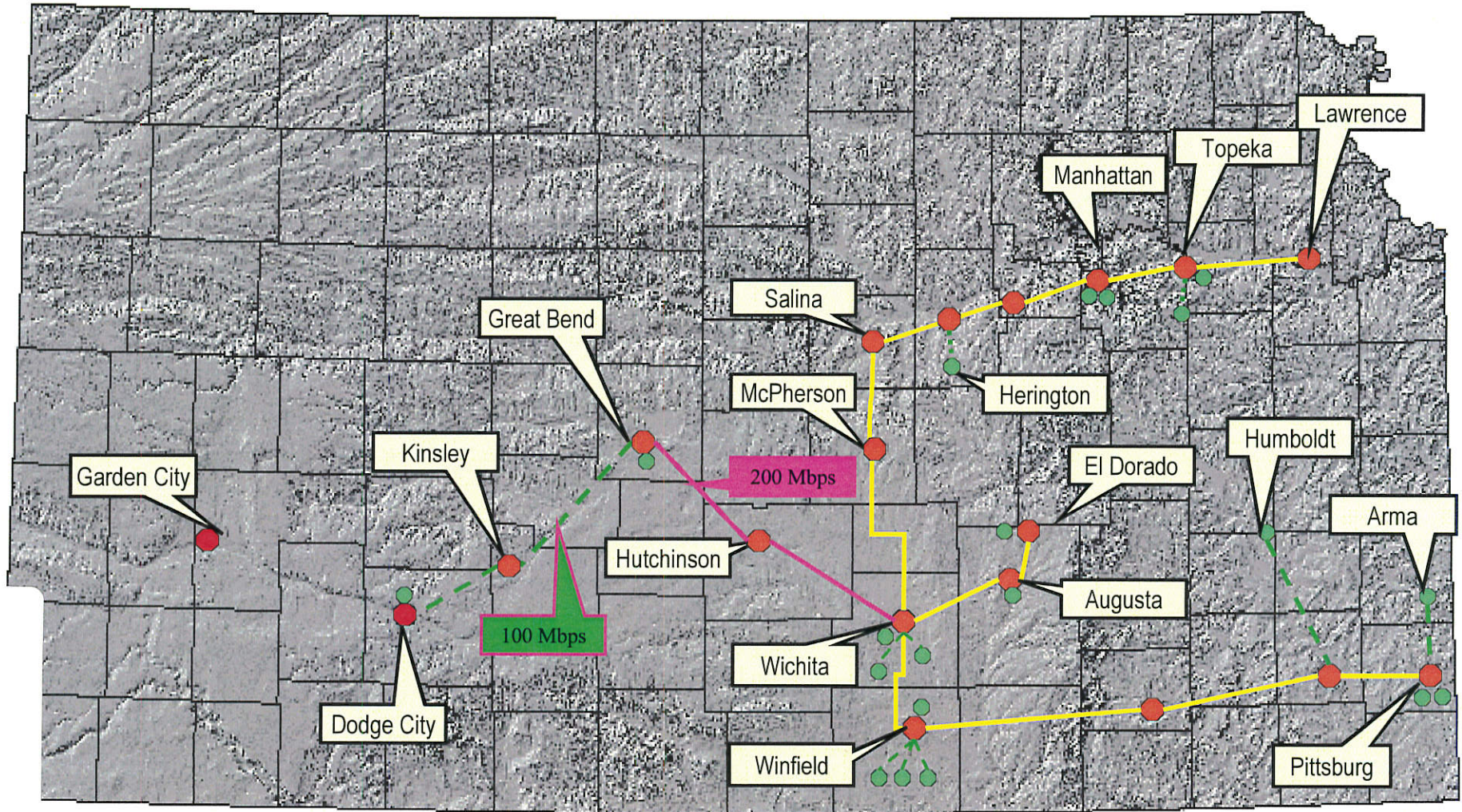


RECENT DISTANCE LEARNING PROPOSAL

ONLY COX NETWORK SHOWN

(PARTNERED WITH 5 OTHER PROVIDER NETWORKS NOT SHOWN HERE)

2-14

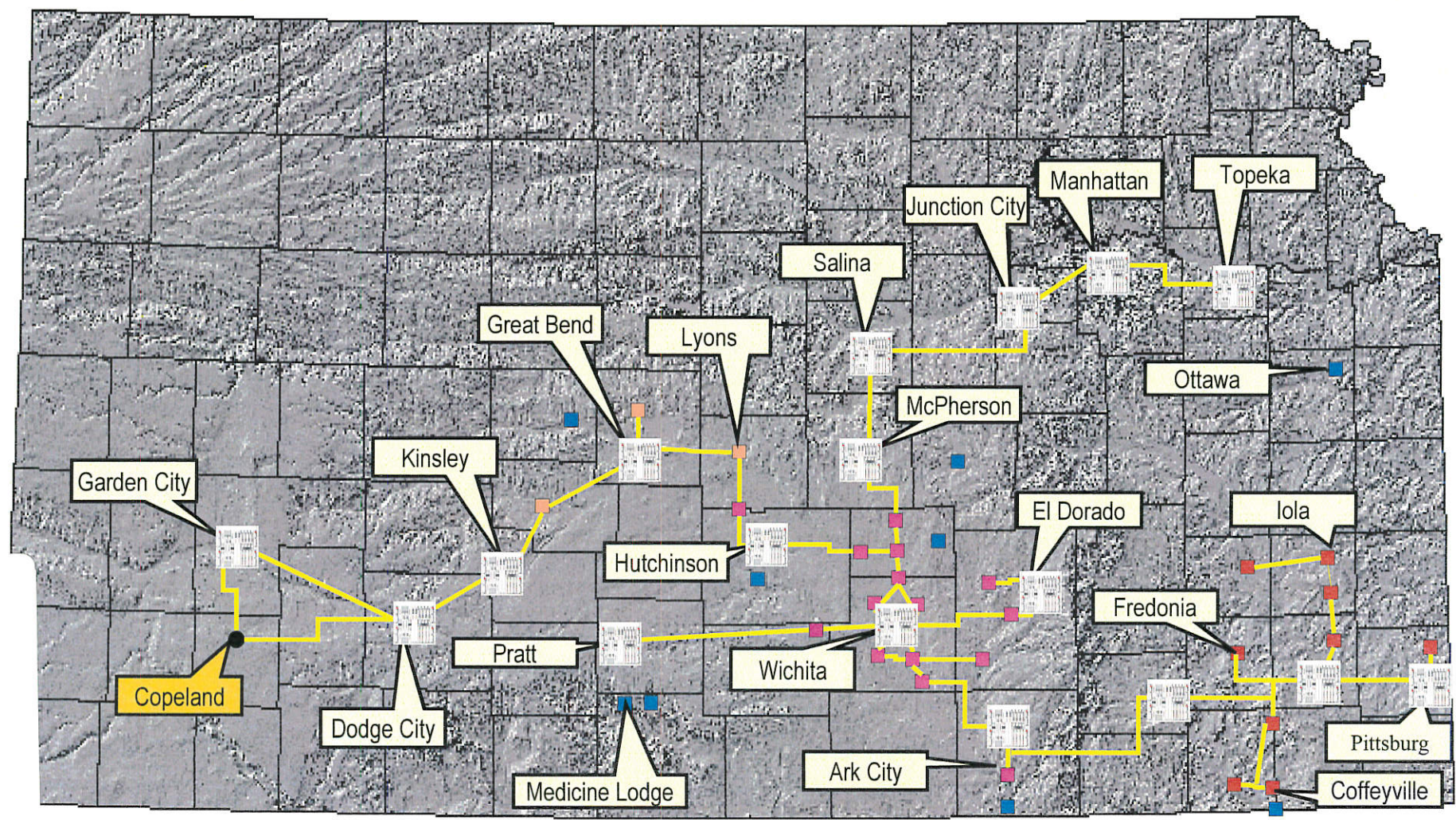


Senate Commerce Committee

January 24, 2001

Cox's Kansas State Operations

Overlaid with KANED Backbone and Peer points



COX IS COMMITTED TO WORK FOR KANSAS COMMUNITIES!

2-16



Senate Commerce Committee

January 24, 2001