

Approved: January 30, 2001
Date

MINUTES OF THE SENATE AGRICULTURE COMMITTEE.

The meeting was called to order by Chairperson Derek Schmidt at 8:30 a.m. on January 24, 2001 in Room 423-S of the Capitol.

All members were present except:

Committee staff present: Raney Gilliland, Legislative Research Department
 Jill Wolters, Revisor of Statutes
 Betty Bomar, Secretary

Conferees appearing before the committee:

 Connie Fischer, Director, Agriculture Products Development Division,
 Department of Commerce and Housing (DOC&H)
 Rebecca Reed, Assistant to the Secretary of Agriculture
 Ken McCauley, Chairman, Kansas Corn Commission
 John Ratzlaff, Chairman, Kansas Grain Sorghum Commission
 Neil Martin, Chairman, Kansas Soybean Commission
 David Frey, Kansas Wheat Commission

Others attending: See attached list

Connie Fischer, Director, Agriculture Products Development Division, DOC&H, stated the Division is committed to improving the economic condition of Kansas producers and boosting the prosperity of rural communities by acting as a catalyst for economic development through the Agriculture Value Added Center (AVAC), the From the Land of Kansas (FLOK) trademark program, the International Trade program, the Domestic Marketing program and the Garden City field office. (Attachment 1)

The objective of the AVAC is to provide technical and financial support for the creation and expansion of producer-based alliances and value added businesses. The AVAC provided \$406,238 in commercialization loans during FY 2000, committed \$87,250 to Kansas State University pilot plant facilities to provide additional technical assistance to clients statewide. The AVAC also granted \$77,900 to assist market development efforts for the beef, wheat, sunflower, corn, and sorghum industries. In FY2000, client sales, patronage & premiums surpassed \$14.5 million.

The FLOK trademark program is designed to help Kansas companies market their services and products. Membership in the program increased by ten percent in FY2000, rising from 623 to 680 companies. The program clients take advantage of marketing opportunity such as *Buy Kansas First!* Exposition, the FLOK Trade Show Assistance, and financing that is available through AVAC.

The Division focused significant effort on helping Kansas agricultural producers and processed food companies gain access to foreign markets. They worked with, and/or hosted, 19 separate foreign trade groups that included representatives from Australia, Austria, Brazil, China, Iran, Japan, Mexico, and numerous ambassadors from their respective embassies in Washington D.C.

Rebecca Reed, assistant to the Secretary of Agriculture, testified that HB 2674, passed during the 2000 legislative session, privatized the four Kansas grain commodity commissions: Kansas Corn Commission; Kansas Grain Sorghum Commission; Kansas Soybean Commission; and Kansas Wheat Commission. The Secretary is an ex-officio member of each of the commission and has been actively involved in their transition from state-run commissions to commissions operating in the private sector. The commissions' transition has been productive and the dollars now go toward research and other activities that directly benefit the producers. (A copy of the full Report is on file in the Office of the Legislative Research Department.)

Ken McCauley, Chairman, Kansas Corn Commission (KCC), testified the new provision of the law allows the commission to choose how to most efficiently govern itself in the private sector for the maximum benefit for Kansas corn producers, By-Laws have been approved, Officer and Commissioner roles and responsibilities have been defined and the FY 2001 Budget approved. A financial and cash-

CONTINUATION SHEET

flow analysis to determine operating needs and a reserve has been placed in two certificates of deposit. The CD's were invested pursuant to the pledging requirements statutorily required for public funds and have maturity dates timed to coincide with the commission's contractual requirements when they become due. The KCC elected to contract with a private sector association for the administration of the checkoff's contracts and refunds. Financial controls on both main and operating accounts include the requirement of two signatures for all disbursements and the bonding of two staff members of the contractor responsible for processing payments. (Attachment 2)

A process has been created to ensure that those who choose not to participate in the voluntary programs receive refunds if requested accurately within five days or less of receipt of the request at the commission's administrative office. Mr. McCauley stated the KCC is aggressively moving forward to position itself on behalf of Kansas producers to respond quickly to new market opportunities, and has created a flexible structure with both financial and oversight controls.

John Ratzlaff, Chairman, Kansas Grain Sorghum Commission (KGSC), stated the Commission has contracted with Kevin Lickteig to provide administrative services. The KGSC is committed to responsible management of the industry's checkoff dollars always keeping in mind that its purpose for existence is to enhance the profitability of the Kansas grain sorghum growers. As an industry, grain sorghum is losing to both corn and soybeans. The KGSC is countering this challenge by investing research dollars into developing cold tolerance in grain sorghum and to allow for earlier planting, thereby, sorghum can more effectively compete with corn. Mr. Ratzlaff stated that grain sorghum grown in Kansas is used to feed livestock, however, the KGSC is working to increase the use of food grade sorghum to expanding its markets.

Neil Martin, Chairman, Kansas Soybean Commission (KSC), testified the new law has allowed the KSC to choose how to govern in the private sector for the maximum benefit of the Kansas soybean industry. KSC approved its by-laws, their officer and commissioner roles and responsibility, their commissioner reimbursement guidelines, and the FY 2001 budget. The KSC contracts with a private sector association for the administration of the checkoff's and are contracting at the present time with the same association as the Kansas Corn Growers Association. Financial controls on both main and operating accounts have been established requiring for two signatures for all disbursements and the bonding of two staff members of the contractor who are responsible for processing payments. The KSC is proceeding with the appointment of two additional commissioners to accomplish a more complete representation of all soybean production areas. Mr. Martin stated the Commission is positioning itself to benefit Kansas producers by being more responsive to new market and research opportunities. (Attachment 3)

Dave Frey, Kansas Wheat Commission (KWC), stated that last year the KWC was the only one of 18 wheat commissions in the nation that was not allowed to earn interest on funds. HB 2674 passed during the 2000 legislature, changed that. During the first six months of this FY, Kansas wheat producer programs have earned \$113,571 in interest for market development and research. Since reorganization, the board has adopted the following mission statement "The Kansas Wheat Commission strives to increase wheat producer productivity and profitability through research, education and domestic and international market development". (Attachment 4)

Mr. Frey stated the KWC believes that the demand for Kansas wheat this year will exceed the Kansas production of 348 million bushels. There was a market demand for 413 million bushels in FY 2000 while the 5-year average state production was only 393 million bushels. The KWC has worked with the USDA to encourage the government to support grain cleaning which has resulted in cleaner wheat being exported. The KWC is focusing on projects that include government and industry partnerships to maximize the wheat producers investment.

Greg Foley, Assistant Secretary of Agriculture, provided a listing of Current Registered Meat Brokers, Pet Food Manufacturers, Public Warehousemen and Wholesalers, which was distributed to members of the Committee. (Attachment 5)

The meeting adjourned at 9:30 a.m.

The next meeting is scheduled for January 30, 2001.

SENATE AGRICULTURE COMMITTEE GUEST LIST

DATE: January 24, 2001

| NAME | REPRESENTING |
|--------------------|-----------------------------|
| Sarah Robben | KDOCEH |
| DIXIE RUSSELL | " |
| Ray Hamann | KDOCH |
| Joe Lieber | Ks Co-op Council |
| Todd Johnson | KLA |
| GREG AOLEY | KDA |
| MARY McCauley | Ks Corn Comm. |
| Marsha Boswell | Ks Wheat Commission |
| Dusti Fritz | Ks Wheat Commission |
| Kevin Lickteig | Ks Grain Sorghum Commission |
| John Ratzliff | Ks Grain Sorghum Commission |
| Neil Martin | Ks Soybean Commission |
| Ken McCauley | Ks. Corn Comm. |
| Connie Fischer | KDOCEH - Ag. Division |
| Melissa Youngren | " " |
| David Frey | Ks. Wheat Commission |
| Rebecca Reed | KDA |
| JOHN C. BOTTENBERG | Ks. ETHANOL PRODUCERS |
| Kerri Ebert | RS Dairy Association |



KANSAS DEPARTMENT
of COMMERCE & HOUSING
AGRICULTURE PRODUCTS DEVELOPMENT DIVISION

Senate Agriculture
Committee

January 24, 2001

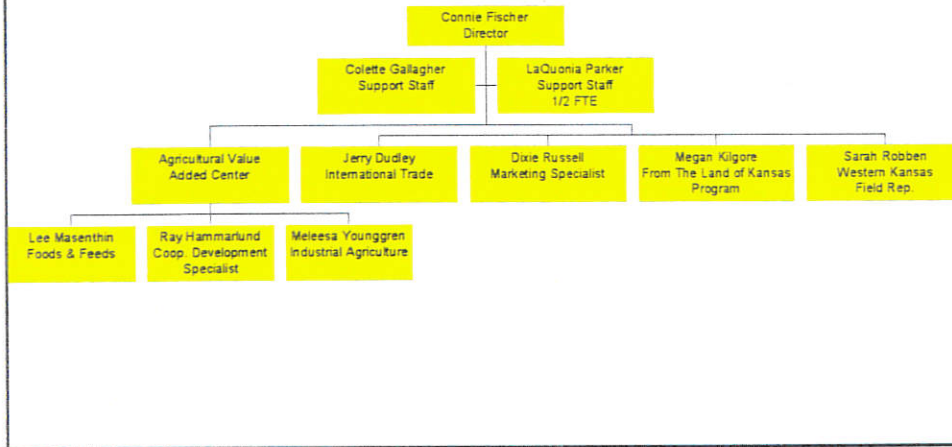
Connie Fischer
Director
Agriculture Products
Development Division

Senate Agriculture Committee

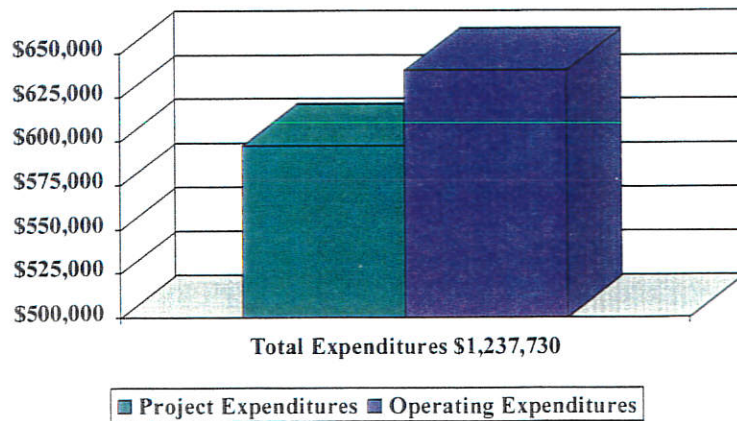
Date 1-24-01

Attachment # 1-1 thru 1-14

Organizational Chart Agriculture Products Development Division



FY2000 Division Expenditures



1999 Value Added Conference Pittsburgh, KS

- KDOC&H partnered with KSU and USDA to host the event.
- Over 200 participants attended the conference.
- A grant from USDA partially covered conference expenses.



Kansas agriculture producers attend a break-out session at the conference.

Agricultural Value Added Center

- The AVAC provided \$406,238 in the form of loans during FY 2000.
- The AVAC committed \$87,250 to KSU's Pilot Plant facilities.
- AVAC client sales, patronage, & premiums for FY2000 was \$14,679,207.

Advanced Market Concepts St. George, KS

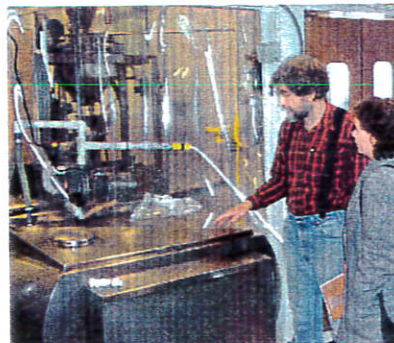
- Provided a \$19,000 commercialization loan for the construction of 100% soy-ink pilot plant.
- Projected to utilize the oil from two million bushels of soybeans annually.
- Current Status: Refining the technology to conduct market survey and stock sale.



Soy-ink pilot plant located at KSU's Manufacturing Learning Center.

Central Soyfoods Lawrence, KS

- Provided a \$50,000 commercialization loan to relocate and expand their soy processing facility for tofu and tempeh.
- Projected to utilize approximately 1000 bushels/year of organic soybeans, procured from the Kansas Organic Producers Cooperative.
- Current Status: New plant operational in December 2000



Owner/operator Jim Cooley shows Megan Kilgore their new facility

Great Plains Corn Processing Coop. Southwest Kansas

- Received a \$50,000 loan to conduct research on the feasibility of building a corn masa mill in Kansas.
- KDOC&H money was matched with \$30,000 from the Kansas Corn Commission, \$5,000 from the Kansas Cooperative Development Center, and \$75,000 from individual producers. *89,000 \$5,000*
- Current Status: Conducting research for the feasibility study.

Kansas Ethanol Plant Feasibility Study

- The Division provided \$8,800 to develop a template that assists producer groups determining the feasibility of ethanol production in their area.
- The KS Corn and Grain Sorghum producer and commission groups provided the balance of funding, \$8,800, for the template.
- The template is projected to save each group \$10,000.
- Current Status: Over 60 templates have been distributed and the Division is currently providing assistance to 7 groups who are interested in ethanol production.

Gourmet Ethnic Breads Shawnee, KS

- The Division provided a \$12,000 loan to assist the company market bread mixes.
- The company utilizes approximately 11,000 bushels of white wheat annually from the American White Wheat Producers Association.
- The loan allowed the company to move production from Nebraska to Kansas.
- Current Status: The company has generated \$51,684 in sales to date. They are now marketing bread mixes as part of a cultural diversity curriculum to educational organizations nationwide.



Leo Feighney, owner, displays product in the retail outlet.

Millennium Plastic Wood Wichita, KS

- The company received a \$22,000 commercialization loan to develop and market products made from a wheat straw and recycled plastic composite material.
- Current Status: The company received approval from the Federal Highway Administration to make guard-rail spacers for use on federal and state highways nationwide. Six states have sent letters of intent to purchase these blocks.



Mailbox posts manufactured from 50% wheat straw and 50% recycled plastic.

National Sunflower Association

- Provided \$50,000 to study the effects of NuSun sunflower oil on human cholesterol levels.
- The project is a cooperative effort among the states of Kansas, North Dakota, South Dakota, Minnesota, and the National Sunflower Association. Total project cost is \$173,746.
- Proctor & Gamble recently announced it would use NuSun oil for Pringle's potato chips.
- Kansas ranks 3rd in the U.S. with an annual production of 405,750,000 lbs of sunflowers. The Northern Sun plant, in Goodland, would be positively impacted with a favorable result of this study.
- In 1999, Kansas produced 372 million pounds of sunflower seed oil varieties on 250,000 acres planted.

Pines International Lawrence, KS

- The company received a \$48,238 commercialization loan to purchase equipment needed to expand their production.
- This expansion allowed the company to increase its market share by capitalizing on an international competitor's production shortfall.
- Projected to increase commodity purchases (barley grass, wheat grass, alfalfa, beets, etc.) from local producers by \$500,000.
- Current Status: This project has generated \$886,710 in sales to date. The company has indicated their increased production has been crucial to remaining competitive in international markets.



Jeff Richards, Production Manager, operates the grinding system purchased with AVAC funds.

Rainbow Organic Farms Uniontown

- The company received a \$58,800 commercialization loan to upgrade a state-inspected meat processing facility to a federally inspected facility.
- Processing has been moved from a Missouri-based operation to a Kansas processor and is projected to generate savings for Kansas beef producers.
- Current Status: The plant became federally inspected on Sept. 1, 2000. The plant has generated \$98,128 in sales to date.

Roberts Seeds New Cambria

- The company received a \$55,000 commercialization loan to purchase packaging equipment for a stone-ground flour mill.
- The project is projected to utilize 45,000 bushels/year of white wheat which will save AWWPA approx. \$50,000/year in transportation costs.
- Current Status: All major equipment has been installed. Wiring should be completed by Feb. 1 and the plant should be operational by mid February.



Flour mill located near New Cambria.

Valley Vegetable Cooperative Cloud & Republic Counties

- The company received a \$90,000 commercialization loan to locate a frozen vegetable processing facility in Scandia.
- KDOC&H Business Development Division has offered \$20,000 in KEIOF funds for the project.
- Individual producers contributed \$1 million in risk capital.
- Current Status: The company is finalizing their debt financing. Construction scheduled for 2001/2002.



Representatives from KDOC&H's Agriculture, Business Development and Community Development Divisions meet with Valley Vegetable Coop. representatives to discuss incentives for the vegetable processing facility.

Whispering Cottonwood Farms Salina, KS

- The company received a \$1,200 commercialization loan to build a specialty walk-in cooler, allowing them to expand their direct-delivery organic produce business.
- The company is projected to expand from 70 to 90 clients.
- Current Status: The company has generated \$4776 in sales to date and added 10 new clients.



Jim Cusick works in the field during planting season.

KSU Wheat Research Center

- KDOC&H provided \$6,000 to assist in the milling of hard white wheat.
- Milling data was made available to grain processors and flour samples were provided to baking companies to improve the industry transition to white wheat.
- Current Status: 48 samples of flour were provided to 16 milling and baking companies for R&D trials.

Food Safety News Conference

- The Division provided a \$600 sponsorship to hold a news conference on irradiated beef.
- Co-sponsored with Kansas Beef Council, Kansas Wheat Commission, NCBA, Johnson County Community College, KSU, and private industry.
- The news conference was attended by 11 press representatives and resulted in national print coverage via Reuters, as well as a minimum of 16 print stories in five regional papers, three television spots, and two Internet features.

KSU Pilot Plants

- KDOC&H provided \$87,250 to the foods and meats labs at KSU to help provide technical assistance such as food labeling, nutritional analysis, shelf-life testing, and product development to Kansas entrepreneurs, food, and meat companies.
- The pilot plant provided technical assistance on 1,242 separate occasions to clients, saving them a minimum of \$300,000 (compared to the costs of using a commercial laboratory.)

International Agriculture

- The Division, cooperating with the KDOC&H Trade Division, hosted 19 foreign trade groups during FY2000.
- The Division assisted three Kansas companies in acquiring \$514,053 in grants to assist with their export marketing.
- Technical assistance and past financial assistance resulted in more than \$260,000 in premiums for the NE Kansas producer group, AgraMarke.

Value-Enhanced Marketing of Hard Red Winter Wheat to Mexico

- The Division spearheaded this project that researches all aspects of a direct marketing grain system, from grain origination and transportation, to milling and baking.
- Identity preserved wheat from Kansas producers was shipped to Grupo Trimex (a flour milling company in Mexico City).
- Joint project with Kansas Wheat Commission, KSU Grain Science and the 21st Century Alliance.
- Total project costs \$203,587, to which KDOC&H has contributed \$113,587 and the Kansas Wheat Commission has contributed \$90,000.



IP Wheat from Kingman, KS producers, being loaded into railcars, before being shipped to Grupo Trimex in Mexico City.

Meet Your Customer/Supplier in Mexico

- Kansas exhibited at this tradeshow sponsored by the US Grains Council.
- Representatives from the KDOC&H, Kansas Corn Growers, AgraMarke, and the 21st Century Alliance attended the conference/tradeshow.



A Mexican buyer visits with Connie Fischer, via an interpreter.

From the Land of Kansas Trademark Program

- Membership in the program increased from 623 to 680 in FY2000.
- In FY 2000, 26 FLOK clients utilized the Trade Show Assistance Program (\$6,207 total program expenditure.) These companies generated approximately \$36,000 in sales from their respective trade shows.
- The FLOK program represented its clients at many tradeshows and events throughout the year, including the Kansas Sampler Festival, Festival of Breads, Buy Kansas First Tradeshow, Kansas Fruit Growers Conference, and day on the farm activities.

Buy Kansas First Tradeshow

- The Division hosted a buyers reception during the opening evening of the tradeshow.
- The reception was attended by approximately 500 wholesale and retail buyers.
- 27 FLOK companies exhibited at the Buy Kansas First Tradeshow



Buyers reception at the Buy Kansas First Tradeshow.

Looking Forward to the Future

- Spring 2001 trade mission to Mexico
- Kansas is host to the Midwest-US Japan conference in September 2001.
- USDA Grant Application for Small Scale Dairy Processing Feasibility Study
- Business Enhancement Grant program for *From the Land of Kansas* members
- Direct Meat Marketing Seminars
- Kansas Black Farmers Association



Annual Legislative Report
Kansas Senate and House Agricultural Committees
Testimony of Ken McCauley, Chairman
January 24, 2001

Mr. Chairman and members of the committee, my name is Ken McCauley. My family and I farm near White Cloud, Kansas, and I am currently serving as the Chairman of the Kansas Corn Commission. I appreciate the opportunity to appear before you today and present the corn commission's annual legislative report.

These first six months have been exciting and fast-paced for the Kansas Corn Commission. Thanks to your efforts last session, HB 2674 was enacted into law and its major provisions took effect July 1, 2001. You will find in the attached written materials examples of the work and effort my fellow corn commissioners and I have taken to seriously assume the responsibilities provided by the new grain commission structure in Kansas. These steps have included:

- Upon the new provisions of the law becoming effective, which allow the commission to choose how to most efficiently govern itself in the private sector for the maximum benefit for Kansas corn producers, the KCC approved By-Laws, Officer and Commissioner Roles and Responsibilities, Commissioner Reimbursement Guidelines, and the FY 2001 Budget.
- The KCC performed a financial and cash-flow analysis to determine this year's operating needs and subsequently placed reserve funds in two certificates of deposit earning 7.07 percent and 6.77 percent per annum respectively. These CD's were invested pursuant to the pledging requirements statutorily required for public funds and have maturity dates timed to coincide with the commission's contractual requirements next becoming due. Thus, producer funds are maximizing their return while proactively meeting the commission's financial needs.

Senate Agriculture Committee

Date 1-24-01

Attachment # 2-1 thru 2-2

- The KCC chose to contract with a private sector association for the administration of the checkoff's contracts and refunds. (You may recall that the provisions of HB 2674 directed assessment collection to continue through the Kansas Department of Agriculture). We established financial controls on both main and operating accounts and included requirements for two signatures for all disbursements and bonding of the two staff members of the contractor responsible for processing payments. I would also point out that the Executive Director of the contracting association does not appear on any banking signature card for commission accounts.
- The commission is maximizing its new flexibility and responsiveness to changing market opportunities with its investments in market development, corn utilization, and production research projects. Ethanol is a significantly growing opportunity for corn utilization that the commission has chosen to invest with other producer funds for feasibility analysis.
- We also have created a process by which those who choose not to participate in these voluntary programs can typically receive any refunds requested accurately within five days or less of receipt of the request at the commission's administrative office.

I hope that you can see that although this first annual legislative report is only for a transition of seven months, the Kansas Corn Commission is aggressively moving forward to position itself on behalf of Kansas producers to respond quickly to new market opportunities. We have created a flexible structure but also one containing both financial and oversight controls. I look forward to continuing this joint public/private venture on behalf of Kansas' corn producers for many years to come. Thank You.



**Annual Legislative Report
Kansas Senate and House Agricultural Committees
Testimony of Neil Martin, Chairman
January 24, 2001**

Mr. Chairman and members of the committee, my name is Neil Martin. My family and I farm near Columbus, Kansas. I am currently serving as the Chairman of the Kansas Soybean Commission. We appreciate the opportunity to appear before this committee today to share the soybean commission's annual legislative report.

The last six months have been very busy, a little challenging, and actually a lot of fun for the Kansas Soybean Commission. You will find in the notebook, numerous examples of work product that my fellow soybean commissioners and I have created in response to our new obligations created by the passage of HB-2674 last session. Among them are:

- The new law allows the commission to choose how to most efficiently govern itself in the private sector for the maximum benefit of the Kansas soybean industry. The KSC approved By-Laws, Officer and Commissioner Roles and Responsibilities, Commissioner Reimbursement Guidelines, and the FY 2001 Budget are enclosed. Quite candidly, the KSC met by conference call within 12 hours of the law taking effect to start making these decisions. This group is dedicated to the task!
- One of the benefits of HB-2673 provided the opportunity for the commissions to benefit from the investment of reserve funds. Previously the State of Kansas retained that benefit. The KSC undertook analysis to determine this year's operating needs and placed reserve funds in a certificate of deposit earning 6.69 percent per annum. These funds were invested pursuant to the statutorily pledging requirements and have a maturity date timed to coincide with the commission's contractual requirements next becoming due. Funds are maximizing their return while meeting the commission's financial needs.

- The KSC contracts with a private sector association for the administration of the checkoff's contracts.

In fact we are contracting today with the same association, the Kansas ^{Senate Agriculture Committee} performs the same functions for the Corn Commission. It has let the K ^{Date 1-24-01}

Attachment # 2-1 thru 2-2

very efficient manner. We established financial controls on both main and operating accounts and included requirements for two signatures for all disbursements and bonding of the two staff members of the contractor responsible for processing payments. As with the Corn Commission, the Executive Director of the contracting association does not appear on any banking signature card for commission accounts.

The commission is maximizing its new flexibility and responsiveness to changing market opportunities with its investments in market development, soybean utilization, production research, and producer/consumer education projects. Biodiesel is a significantly growing opportunity for soybean utilization that the commission has chosen to invest producer funds into for feasibility analysis.

Since the Kansas program is part of the current national soybean checkoff program administered by USDA, refunds are not available to producers. But there is an additional series of compliance requirements to satisfy as a USDA designated qualified state soybean board. These requirements include additional auditing and financial stipulations the other Kansas grain commissions do not have to administer. The KSC has actively proceeded to establish a working relationship with the United Soybean Board including completion of the biannual USDA audit last fall and attendance at the annual compliance workshop and other national coordination meetings.

The KSC is also proceeding with the appointment of two additional commissioners to accomplish more complete representation of all soybean production areas. Soybean cropping patterns continue to expand across the state into new western areas providing opportunities for education of new producers and grain handlers in the soybean industry.

While we are really reporting for the first six months of this new program, I believe it is apparent that the Kansas Soybean Commission is positioning itself to benefit Kansas producers by being more responsive to new market and research opportunities. We have flexibility with financial and oversight controls. I believe that the legislature did a good thing last year and we are dedicated to the success of our program. Thank you.

**Kansas Wheat Commission Comments
For
Kansas Senate and House Ag Committees
January 24, 2001**

On behalf of the Kansas Wheat Commission board of directors, who are wheat producers themselves, and in fact on behalf of all Kansas wheat producers, who pay a one-cent per bushel promotional and research assessment...thank you to the Kansas Legislature for the changes you made to our enabling legislation.

Last year Kansas Wheat Commission was the only one of 18 wheat commissions in the nation that was not allowed to earn interest on funds. You changed that. In the first six months of this fiscal year, Kansas wheat producer programs have earned \$113,571 in interest for market development and research work. Thanks to the work of the legislature, we now have a hedge against inflation and the additional earnings means more efficient use of the wheat producer's penny per bushel.

Since the re-organization of the Kansas Wheat Commission, the board has adopted the following mission statement. The Kansas Wheat Commission strives to "increase wheat producer productivity and profitability through research, education and domestic and international market development."

No longer does the Kansas Wheat Commission appear in the state budget, nor will the Governor appoint future Commissioners. However, accountability and reporting to the wheat producers of the state is even more important today.

The Kansas legislature and the Governor approved the submitted budget for the Kansas Wheat Commission for FY2001 and after the change in the law took place, the re-organized Kansas Wheat Commission adopted the budget that we are operating under this year. The budget for this year is the same as was approved by the legislature and is included in the materials.

Since 1957, Kansas Wheat Commission has, by law, made an annual report to the wheat producers of Kansas and to the Governor of the state. This year, with the change in legislation, we continue to provide a comprehensive annual report on our activities. That report is included in the materials presented here.

Senate Agriculture Committee

Date 1-24-01

Attachment # 4-1 thru 4-3

Not only has this annual report been mailed to every registered wheat producer in the state whose name is on the list maintained by Kansas Agricultural Statistics, it is also available in its' entirety on our website, (which recently received a five star rating by the Kansas City Star).

In the past year, Kansas's producers planted fully three quarters of the wheat acres in the state to varieties developed by Kansas State University. KSU wheat varieties Jagger and 2137 alone last year accounted for 57% of the state's planted acres, not including blends. The KSU wheat-breeding program uses state and federal funds, University facilities, staff and teaching staff as well as part-time student help, and the program is dependant on wheat check-off dollars for about 45% of its funds to achieve the success that this program has experienced.

In terms of marketing, we believe that demand for Kansas's wheat this year will exceed the Kansas production of 348 million bushels. This past fiscal year, there was market demand for 413 million bushels of Kansas's wheat, while the 5-year average state production was only 393 million bushels.

One example of how Kansas Wheat Commission has worked on promotion of that demand is through support for the U.S. Government cooperator group for wheat, U.S. Wheat Associates. In Egypt (last year's largest U.S. wheat buyer and largest HRW export market), U.S. Wheat Associates worked to put the best face on products made with U.S. wheat. This promotional campaign is called the U.S. Wheat Quality Seal. A piece from that campaign is featured in Arabic on the cover of our annual report. U.S. Wheat Associates advertises and publicizes this seal. In order for a mill or bakery or food processor to use the US Wheat Quality Seal on their "Duncan Donuts" or "Pizza Hut" carryout box, or flour bag, or bread wrapper, the company must buy at least 70% U.S. wheat or flour. We know it's working because the French and Australian press is complaining about it and U.S. sales of wheat to the Egyptian private sector have been great.

The Wheat Quality Seal project, and any other project with U.S. Wheat Associates are done cooperatively with the Foreign Agricultural Service of the U.S.D.A. We split the costs and last year that meant that for every producer dollar invested FAS put \$2.17 toward those same U.S. Wheat Associates approved projects overseas.

For the past two years Kansas Wheat Commission has worked with U.S. Agriculture Secretary Dan Glickman to encourage U.S. government support for grain cleaning and we have been successful in those efforts. From now on, food aid that is purchased by the federal government and then exported from the U.S. will be cleaner than ever before. This was a direct result of Kansas Wheat Commission efforts. We believe that this effort will have far reaching effects on the improved sanitation quality of U.S. commercial as well as U.S. government wheat exports in the future.

Kansas Wheat Commission hosts more wheat trade delegations than any other state. Wheat producer investment in the International Grains Program on the Kansas State University campus, as a world-class facility to meet with and provide training for international customers of wheat bodes well for the future of wheat market development efforts in the state of Kansas. We believe that an investment in IGP encourages further investments in Kansas by surrounding states and the Federal Government as this program grows to attract even more international wheat buyers to come to Kansas.

Kansas Wheat Commission is also involved in domestic marketing. Through Wheat Foods Council, KWC is working to strengthen domestic demand for wheat-based foods. Kansas Wheat Commission also utilizes 27 spokespersons that donate their time to give programs and demonstrations and to work at exhibits, which promote the domestic use of wheat products. Other domestic projects include revisions of educational materials, an annual recipe book, baking contest and Bake and Take Day.

The projects which Kansas Wheat Commission is focusing on are those which include government and industry partners to maximize wheat producers investment so that we can make the best out of each one penny per bushel and the changes that were made in the law, has helped us to do just that.

01/23/01



**Listing of Current Registered
Meat Brokers, Pet Food Manufacturers,
Public Warehousemen, and Wholesalers**

The following outline describes the legend for the legislative request along with a brief description of components provided within annual reviews of the subject registered facilities.

Legend for listing: W = Wholesalers/Distributors
 AMF = Animal Food Manufacturers
 B = Meat Broker
 PWH = Public Warehousemen

Meat & Poultry Compliance Program conducts annual reviews of registrants to:

- 1) Ensure that all standards of identity are met.
- 2) All labels claims are verified quantitatively for accuracy with regards to component ingredients.
- 3) Ensure that establishments where inspection is not maintained comply with applicable regulations in regards to wholesomeness and sanitation of meat and poultry products.
- 4) Maintain our "equal to" status with USDA/Food Safety Inspection Service (FSIS).

If there are any specific questions regarding the attached listing or program functions, please feel free to contact Mike Pierce at (785) 296-3511.

Senate Agriculture Committee

Date 1-24-01

Attachment # 5-1 thru 5-16

.F BROKERS, PET FOOD MANUFACTURERS, PUBLIC WAREHOUSEMEN, WHOLESALERS

01/23/01

| | |
|--|--------------------------------|
| 4 D ACRES INC MICHAEL MARTIN SR 13096 W 287 ST LOUISBURG KS 66053 | (913) 837-4119 W [421] |
| 4 STAR EMU RANCH LARRY G SHARP 1035 S 250TH ST PITTSBURG KS 66762 | (316) 231-5952 W [P7230] |
| A & A COORS INC LENORE GOETZ E 8TH ST PO BOX 224 HAYS KS 67601 | (785) 625-9638 W |
| A & A COORS INC DBA WHOLESALE BEVERAGE C LENORE GOETZ 1060 S COUNTRY CLUB DR COLBY KS 67701 | (785) 462-2102 W |
| A-FAM WHOLESALE INC STEPHEN L NANCE 3939 W 29TH ST S WICHITA KS 67217 | (316) 943-9351 W [FEDS,623] |
| AFFILIATED FOODS INC LORAN HINDS BEATY DR & OAK ST ELWOOD KS 66024 | (913) 365-9741 W |
| ALBERS HOMEGROWN BEEF ALAN/KATHLEEN ALBERS 7651 SW 160TH AVE NASHVILLE KS 67112 | (316) 246-5318 W |
| ALDI INC (KS) DUANE M COLLIER 10505 S K7 HWY OLATHE KS 66061 | (913) 312-1375 W |
| ALLIANT FOODSERVICE INC DAVID ESHELMAN 4725 NW US HWY 24 TOPEKA KS 66618 | (785) 233-7100 W |
| AMCON DISTRIBUTING COMPANY MICHAEL D JAMES 821 E COMMERCIAL SPRINGFIELD MO 65803 | (417) 866-0884 W |
| AMERICOLD LOGISTICS DBA K C UNDERGROUND KARON M PITTMAN 6500 INLAND DR KANSAS CITY KS 66106 | (913) 375-1000 PWH |

MEAT BROKERS, PET FOOD MANUFACTURERS, PUBLIC WAREHOUSEMEN, WHOLESALERS

01/23/01

AMERISERVE (913) 492-1343 W
JOSEPH G LUNETTA
9854 INDUSTRIAL BLVD
LENEXA KS 66215

ANN MERKEL (785) 865-1497 W
ANN MERKEL
11872 246TH ST [P7230.421]
LAWRENCE KS 66044

ASSOCIATED WHOLESALE GROCERS INC (913) 288-1624 W
DOUG BOEHMER
5000 KANSAS AVE
KANSAS CITY KS 66106

AULNE EMU RANCH (316) 382-3527 W
JAY L MCCLURE
1723 E 140TH ST [198]
MARION KS 66861

BELOIT DAIRY & WHOLESALE FOODS (785) 738-3353 W
WILLIAM G FOREMAN
119 N INDEPENDENCE BOX 403
BELOIT KS 67420

BENNETT RANCH - ALL NATURAL MEATS (785) 242-6240 W
DANIEL M BENNETT
3647 KINGMAN RD [25.421]
OTTAWA KS 66067

BERRY'S ARCTIC ICE LLC (785) 357-4466 PWH
PHILLIP R PERKINS
200 N KANSAS AVE
TOPEKA KS 66603

BILL KING (316) 830-2195 W
BILL F KING
10407 SW 72ND ST
HALSTEAD KS 67056

BISON'S BEST BUFFALO COMPANY (316) 658-4555 W
DANNY F LINNEBUR
RR 1 BOX 7 [821]
FALL RIVER KS 67047-9747

BLUE LINE DISTRIBUTING (913) 599-5050 W
MICHAEL ILITCH
14403 W 106TH ST
LENEXA KS 66215

BOARDWALK FARM (316) 231-5803 W
BRENT BITNER
1108 S 220 ST [421]
PITTSBURG KS 66762

BROKERS, PET FOOD MANUFACTURERS, PUBLIC WAREHOUSEMEN, WHOLESALERS

01/23/01

BORN FARM (316) 256-6276 W
 JOHN EDGAR BORN [421]
 870 27TH RD NW
 LEBO KS 66856

BOSSIE'S "BEST" (785) 799-3737 W
 NANCY VOGELSBURG-BUSC [238]
 896 15TH RD
 HOME KS 66438

BUTTERFIELD'S BUFFALO MEAT (785) 738-2336 B
 LARRY BUTTERFIELD, SR [456]
 RR 3 BOX 7
 BELOIT KS 67420

CARL FOODS INC (316) 342-3895 W
 MICKEY L CARL
 301 COMMERCIAL BOX 847
 EMPORIA KS 66801-0847

CARLOS' MEAT (316) 275-7279 B
 CARLOS RINCONES
 1107 N TAYLOR
 GARDEN CITY KS 67846

CHAVEY VENTURES INC DBA RED WHEEL FUNDRA (913) 888-5125 W
 MARK CHAVEY
 3435 N EMPORIA
 WICHITA KS 67219

CLARK FAMILY FARM (785) 842-0385 W
 FRED CLARK [421,427]
 759 E 1100 RD
 BALDWIN CITY KS 66006

COLLINS SOUTH DOWNS (785) 743-6776 W
 JIMMY D COLLINS [147]
 RR 1 BOX 53
 WAKEENEY KS 67672

CREEK RIDGE FARM (785) 863-2507 W
 WAYNE A WHITE [76]
 12612 62ND ST
 OSKALOOSA KS 66066

CURTIS SIMON (785) 754-2350 W
 CURTIS SIMON [84]
 2598 CO RD 78
 QUINTER KS 67752-6109

D & S FROZEN FOODS (785) 462-8302 W
 DANNY L MAINUS
 535 S CLEVELAND AVE
 COLBY KS 67701

M... BROKERS, PET FOOD MANUFACTURERS, PUBLIC WAREHOUSEMEN, WHOLESALERS

01/23/01

D Q FARMS (785) 847-6421 W
DAVID LINCK [421]
2464 130TH ST
HURON KS 66041

DAVID'S HERBS (785) 597-5867 W
DAVID P WARRINER [421]
3328 LINN RD
PERRY KS 66073

DEAN & DELUCA (316) 838-1255 B
EMIL GROSSO
2526 E 36TH ST N CIRCLE
WICHITA KS 67219

DILLON STORES PERISHABLE WAREHOUSE (316) 665-5511 W
BILL SCHRAG
2700 E 4TH
HUTCHINSON KS 67501

DODGE CITY STEAK COMPANY LLC (316) 227-9657 W
DOUGLAS PARKER
PO BOX 427 [2320]
DODGE CITY KS 67801-0427

DUCKWALL-ALCO STORES INC (785) 263-3350 W
DAVID W MILLS
401 COTTAGE AVE
ABILENE KS 67410-2832

E Z CHOICE MEATS LLC (316) 944-7325 B
CHRISTINE R KIEFER [FEDS]
3601 W HARRY SUITE 3
WICHITA KS 67213

EARP MEAT COMPANY DBA EARP DISTRIBUTION (913) 287-3311 W
DON EARP [FEDS]
6550 KANSAS AVE
KANSAS CITY KS 66111

ELK CREEK GAME BIRDS (316) 763-2418 W
JOSEPH W STICH
8740 150TH RD
CHANUTE KS 66720

EMERALD ESTATES (316) 324-5271 W
CONNIE M SMITH [P7230]
107 SUNNYSIDE DR PO BOX 51
LEWIS KS 67552

EMU OUTBACK RANCH (316) 442-0366 W
NORMAN THOMPSON [421,FEDS]
28731 131ST RD
ARKANSAS CITY KS 67005

BROKERS, PET FOOD MANUFACTURERS, PUBLIC WAREHOUSEMEN, WHOLESALERS

01/23/01

EMU RIDGE RANCH (316) 431-9443 W
 DAVID J HUTCHISON
 RR 1 BOX 194A [421]
 CHANUTE KS 66720

EVCO WHOLESALE FOOD CORP (316) 343-7000 W
 CHARLES C EVANS
 309 MERCHANT ST PO BOX D [26.218.FEDs]
 EMPORIA KS 66801

EVERYTHING EMU (316) 431-1550 W
 JEFFREY FOSTER
 P O BOX 100 [288]
 CHANUTE KS 66720

EXCEL CORP DBA EXCEL FOOD DISTRIBUTION C (316) 832-7550 W
 RICK DALTON
 2901 N MEAD [86K]
 WICHITA KS 67219

F & A FOOD SALES INC (785) 243-2301 W
 DAN R FARHA
 2221 LINCOLN BOX 651
 CONCORDIA KS 66901

F & E WHOLESALE GROCERY INC (316) 838-2400 W
 DOLORES FERGUSON
 2932 N OHIO
 WICHITA KS 67219

F & E WHOLESALE GROCERY INC (316) 255-5041 W
 DOLORES FERGUSON
 2313 W WYATT EARP BLVD
 DODGE CITY KS 67801

FALLEY'S INC (785) 267-1501 W
 W KENT LAUGHMAN
 3120 S KANSAS AVE
 TOPEKA KS 66611

FARMER'S FALLOW DEER (316) 584-6634 W
 ROBERT G FARMER
 9611 S 295TH W [82]
 VIOLA KS 67149

FLATLAND FOOD DISTRIBUTORS L L C (316) 945-5171 W
 KRISTINE R FRANZEN
 3930 W 29TH ST S STE 90 [208A.850.Fed]
 WICHITA KS 67217

FLEMING CO INC (913) 551-8939 W
 DAVID M PICKERT
 5150 KANSAS AVE BX 419796
 KANSAS CITY KS 64141-6796

BROKERS, PET FOOD MANUFACTURERS, PUBLIC WAREHOUSEMEN, WHOLESALERS

01/23/01

FLINT HILLS OSTRICH RANCH (785) 762-2051 W
 RICHARD H HOWARD
 2525 J-HILL RD [198.380.380A]
 JUNCTION CITY KS 66441-7498

GEM FEEDS LLC (785) 462-3208 W
 TRACEY GALLI
 1114 MAIN PO BOX 3 [147]
 GEM KS 67734

GILPIN'S DISTRIBUTING CO (785) 483-3456 W
 WM E GILPIN
 713 N MAIN PO BOX 586 [147]
 RUSSELL KS 67665

GLACIER BAY SEAFOOD & MEAT CO. (913) 422-3474 W
 JOHN CHRIS MCCUE
 8167 COLE PKWY [1661.P5542A]
 SHAWNEE KS 66227

GRASSLAND FARMS "ALL NATURAL" MEAT AND P (316) 782-3144 W
 MELISSA KREIDLER
 2610 22ND RD [421]
 UDALL KS 67146

HARVEST MEAT COMPANY INC (913) 371-2333 W
 MICHAEL P LEAVY
 1301 ARGENTINE BLVD
 KANSAS CITY KS 66105

HAWKS HILL VENISON (785) 597-5618 W
 JIM K GUFFEY
 9278 22ND ST [105.211]
 PERRY KS 66073

HEARTLAND COUNTRY MEATS (316) 986-5525 W
 BRUCE CARSELOWEY
 12410 52ND RD [725]
 ROCK KS 67131-9416

HEARTLAND PORK (785) 263-1898 W
 SANDRA SLEICHTER
 733 2500 AVE [841]
 ABILENE KS 67410

HEINZ PET PRODUCTS/TOPEKA (785) 235-0021 AFM
 BRIAN HUGHAN
 2200 NW BRICKYARD RD
 TOPEKA KS 66618

HIGH PLAINS OSTRICH (316) 563-9345 W
 VAIL FRUECHTING
 5203 V ROAD
 PLAINS KS 67869-9124

BROKERS, PET FOOD MANUFACTURERS, PUBLIC WAREHOUSEMEN, WHOLESALERS

01/23/01

HILL 'S PET NUTRITION INC (785) 368-5502 AFM
KENNETH R JOHANNES
320 E CRANE ST PO BOX 148
TOPEKA KS 66601-0148

HUTTO FAMILY MEATS LLC (316) 389-2526 W
JOHN &/OR KENNA HUTTO
6663 SE MESSER RD [417.13135]
GALENA KS 66739

J & J WHOLESALE DBA BITTERMAN-BUTTON (785) 238-4721 W
DAN COFFEY
2718 INDUSTRIAL ST BOX 865
JUNCTION CITY KS 66441

JACK E WILSON (316) 939-4346 W
JACK WILSON
4691 NEW HAMPSHIRE RD [421]
BRONSON KS 66716

JAMES R HANSEN/SUNRISE VENTURES (605) 745-6143 W
JAMES R HANSEN
RR 1 BOX 194 [421]
HOT SPRINGS SD 57747

JUNCTION CITY DIST CO INC (785) 238-6137 W
KELLY T FRAKES
2005 N JACKSON PO BOX 186 [394]
JUNCTION CITY KS 66441

JUNCTION CITY DISTRIBUTING & VENDING CO (785) 762-2206 W
GALE D CYNNOVA
303 E 7TH PO BOX 808
JUNCTION CITY KS 66441

K & F CATTLE L L C (316) 342-2358 W
CRAIG KIMBALL
2553 RD S [431]
ADMIRE KS 66830

K & R DISTRIBUTING (316) 793-5066 W
RICK CHURCH
718 TAFT
GREAT BEND KS 67530

K - K EMU ACRES (316) 394-2504 W
EDWARD/GABRIELE KLEIN
RR 1 BOX 9A [421]
ATLANTA KS 67008

K L P ENTERPRISES INC (316) 263-2549 W
PHAT DUONG
1628 N BROADWAY
WICHITA KS 67214

ML... BROKERS, PET FOOD MANUFACTURERS, PUBLIC WAREHOUSEMEN, WHOLESALERS

01/23/01

K O BEEF & QUALITY FOODS INC (785) 885-4430 W
 WARREN KOELLING [415.725]
 2454 W 177TH DR
 ALTON KS 67623-9286

KABRIEL FARMS (785) 244-6481 W
 GARY KABRIEL [P7230]
 2516 FRONTIER RD
 SUMMERFIELD KS 66541

KANSAS BISON COMPANY INC (316) 835-2300 W
 MITCH POWELL {82}
 16 LESLIE LN PO BOX 128
 HALSTEAD KS 67056

KANSAS COLD STORAGE INC (913) 321-4868 PWH
 PHILLIP R BALANO
 1401 FAIRFAX TRFWY BLDG F
 KANSAS CITY KS 66115

L & M K FARMS (316) 221-3176 W
 LARRY H/MARTHA KELLEY [82]
 6643 US 160
 WINFIELD KS 67156

L C L BUFFALO RANCH (785) 455-3707 W
 LESTER C LAWRENCE
 431 FIRST RD
 CLIFTON KS 66937

LADY BALTIMORE FOODS INC (913) 371-8300 W
 JAMES M DRISKELL
 1601 FAIRFAX TRFY
 KANSAS CITY KS 66115

LAMONE CANDY & TOBACCO CO INC (785) 825-1538 W
 BETH WEBSTER
 668 N OHIO
 SALINA KS 67401

LAND O'LAKES FARMLAND FEED (913) 299-2326 AFM
 MIKE BRIDGE
 6833 GRIFFIN RD
 KANSAS CITY KS 66111

LAND OF OZ MEATS INC (785) 823-7474 W
 DONALD WHITSON [725.2262.+]
 2775-G ARNOLD AVE
 SALINA KS 67401

LANTER COMPANY (913) 888-1746 PWH
 ALBERT W WINKELER
 17501 W 98TH ST
 LENEXA KS 66219

MEAT BROKERS, PET FOOD MANUFACTURERS, PUBLIC WAREHOUSEMEN, WHOLESALERS

01/23/01

LESTER DROSTE DIST (316) 227-7266 W
LESTER J DROSTE
311 CAMPUS DR
DODGE CITY KS 67801

LONGVIEW ORGANIC FARM (785) 945-3553 W
OREN O LONG
16411 JACKSON RD [105]
VALLEY FALLS KS 66088

MAGNOLIA HILL ENTERPRISES (316) 532-3317 W
GARY KREHBIEL
3461 SE 120 ST [125]
RAGO KS 67142

MAIER'S ORGANIC ACRES (785) 242-5638 W
TIMOTHY H MAIER
3770 ROCK CREEK TERR [421.8737]
RANTOUL KS 66079

MAJESTIC EMU FARM (316) 733-9048 W
JAMES MARK JACKSON
14425 E 9TH ST N
WICHITA KS 67230-7042

MAR KAN SALES (785) 562-3391 W
DAN WASSENBERG
612 CENTER PO BOX 535
MARYSVILLE KS 66508

MARRONE'S INCORPORATED (316) 231-6610 W
DALE W MARRONE
800 E 14TH ST PO BOX 600 [26.20654,+]
PITTSBURG KS 66762-0600

MASONER & SCHNEIDER LOCKER (913) 795-2228 W
RALPH A SCHNEIDER
211 FIRST BOX 89
MOUND CITY KS 66056

MCLANE FOODSERVICE INC (913) 422-6100 W
KEVIN J KOCH
8200 MONTICELLO
SHAWNEE KS 66227

MENU FOODS MIDWEST CORPORATION (316) 342-1323 AFM
CHRISTOPHER HORN
1400 E LOGAN AVE BOX 1046
EMPORIA KS 66801

MIES WHOLESALE MEATS INC (913) 371-5528 W
MARK MIES
1105 S 5TH ST PO BOX 5054
KANSAS CITY KS 66119

ML. BROKERS, PET FOOD MANUFACTURERS, PUBLIC WAREHOUSEMEN, WHOLESALERS

01/23/01

MO-KAN EMU (913) 557-9403 W
DEBRA WRIGHT
21495 W 303RD ST [211]
PAOLA KS 66071

MONSOUR'S INC (316) 231-6363 W
MARK D MONSOUR
112 N ELM ST PO BOX 1175
PITTSBURG KS 66762-1175

MULTIFOODS DISTRIBUTION GROUP (303) 662-7100 W
DENNIS L JOHNSON
10600 W 79TH ST
SHAWNEE KS 66214

NATIONAL BY PRODUCTS INC DBA TREAT MAKER (316) 662-4712 AFM
DANIEL HAGAN
2010 W 6TH AVE
HUTCHINSON KS 67501

NATIONAL BY-PRODUCTS DBA GREYHOUND STORE (785) 263-2149 W
JANIECE P NUTTING
307 AUGUSTINE AVE
ABILENE KS 67410

NATIONAL BY-PRODUCTS (316) 276-7618 AFM
TOM MENOUSEK
755 S FARMLAND RD
GARDEN CITY KS 67846

NATIONAL BY-PRODUCTS (316) 264-6951 AFM
TOM MENOUSEK
2155 N MOSLEY
WICHITA KS 67214

NATURAL LIFE PET PRODUCTS (316) 231-7711 AFM
KURT TERLIP
1601 W MCKAY ST PO BOX 943
FRONTENAC KS 66763

O'DONNELL'S EMERALD EGG EMU FARM (785) 926-4412 W
MICHAEL DALE O'DONNELL
2788 NAVAJO RD [380]
CLAY CENTER KS 67432-8181

OAKLAND PORK (785) 427-2420 W
CHARLES & LINDA RICHARD
RR 2 BOX 33 [312]
MILTONVALE KS 67466

OUTBACK EMU RANCH (316) 431-4431 W
MIKE MCGEE
7450 HWY 39 [421]
CHANUTE KS 66720

MEAT BROKERS, PET FOOD MANUFACTURERS, PUBLIC WAREHOUSEMEN, WHOLESALERS

01/23/01

OZZIE MEATS - WHEATLAND OSTRICH FARMS (316) 722-9613 W
 THARAN K SCHMIDT
 RR 1 [725]
 PECK KS 67120

PARIDEOZA FARM - RHONDA JANKE (785) 456-7314 W
 RHONDA JANKE
 5665 LEWIS WILSON RD [380]
 WAMEGO KS 66547

PESTINGER DISTRIBUTING CO INC (785) 738-3448 W
 MARION GENE PESTINGER
 223 E HWY 24 PO BOX 119
 BELOIT KS 67420

PHILIP RANCH BEEF (785) 625-5133 W
 MICHAEL SPRAGUE
 677 300TH AVE [84]
 HAYS KS 67601

PINWHEEL FARM (785) 841-4540 W
 NATALYA LOWTHER
 1480 N 1700 RD [105]
 LAWRENCE KS 66044-9312

PLAINS LIVESTOCK INC (785) 523-4270 W
 MARVIN LAWRENCE
 115 N WASHINGTON BOX 373 [Fed Plants]
 DELPHOS KS 67436

PRAIRIE NATURAL BEEF (785) 392-3243 W
 JAMES D SCHARPLAZ
 658 JUSTICE RD [312]
 MINNEAPOLIS KS 67467

PRAIRIE ROSE MEATS/A(DBA)OF RESTORATION (316) 778-2121 W
 THOMAS ETHEREDGE
 15683 NW 10TH ST [82]
 BENTON KS 67017

PRESCOTT ELEVATOR (913) 471-4311 W
 DEBRA/RODNEY SPRINGER
 PO BOX 95 [421]
 PRESCOTT KS 66767

RAINBOW ORGANIC FARMS COMPANY (316) 939-4933 B
 BETTY L ENDICOTT
 1976 55TH ST [20670,21334]
 BRONSON KS 66716

RAKEWHEEL EMU RANCH (316) 922-7294 W
 JOHN C MARSH
 1203 US HWY 166
 EDNA KS 67342-9342

MEAT BROKERS, PET FOOD MANUFACTURERS, PUBLIC WAREHOUSEMEN, WHOLESALERS

01/23/01

RALSTON SALES (316) 686-9795 W
 WILLIAM H RALSTON [461]
 150 N CLIFTON PO BX 781264
 WICHITA KS 67278

REDBUD BISON OF KANSAS INC (785) 256-2764 W
 MARK S WHITAKER [427]
 9801 SW 105TH
 AUBURN KS 66402-9611

RENAISSANCE FARMS LTD (316) 343-6757 W
 WILLIAM J DECKER [841.66]
 1800 E 18TH
 EMPORIA KS 66801

REYNA'S TORTILLERIA (913) 621-7011 W
 ZOILA CERVANTES [FED 6797]
 537 CENTRAL AVE
 KANSAS CITY KS 66101-3549

ROCKIN T P LAMB (913) 796-6044 W
 THOMAS C POPE [168]
 20009 62ND ST
 MCLOUTH KS 66054

SAFEWAY INC - EMPORIA PET FOOD PLANT (316) 342-1650 AFM
 TRISTIN T COBLE
 841 GRAPHIC ARTS RD
 EMPORIA KS 66865

SAM'S CLUB #6418 (316) 634-6007 B
 DAVID BULLINGTON
 3415 N ROCK RD
 WICHITA KS 67226

SAM'S CLUB #6426 (785) 825-2229 B
 DAVID BULLINGTON
 2919 MARKET PLACE
 SALINA KS 67401

SAM'S CLUB #8208 (913) 894-0084 B
 DAVID BULLINGTON
 12200 W 95TH ST
 KANSAS CITY KS 66215

SAM'S CLUB #8254 (316) 945-3010 B
 DAVID BULLINGTON
 6200 W KELLOGG
 WICHITA KS 67209

SCHUBERT'S EMUZZING RANCH (316) 772-5859 W
 SHERYL SCHUBERT [82]
 825 E 117 N
 SEDGWICK KS 67135

MEAT BROKERS, PET FOOD MANUFACTURERS, PUBLIC WAREHOUSEMEN, WHOLESALERS

01/23/01

SCHWINN MARKETING (913) 796-6453 W
 MICHAEL G SCHWINN [211.2936]
 11125 N K-92 HWY
 MCLOUTH KS 66054

SENECA WHOLESALE CO INC (785) 336-2118 W
 DON F STRATHMAN [234]
 36 S 8TH ST
 SENECA KS 66538

SHADELAND STOCK FARM (785) 242-3540 B
 JACK E BEAUCHAMP [427]
 1857 OSBORNE RD
 OTTAWA KS 66067

SMOKY HILL BISON CO INC (785) 227-2008 B
 VERNE A HUBALEK [725]
 PO BOX 407
 LINDSBORG KS 67456-0407

SMOKY HILL STEAKS (785) 891-3765 W
 JERRY GRUND [869.147]
 HC 1 BOX 45A
 WALLACE KS 67761

SOUTH WINDS BUFFALO RANCH (316) 331-3600 W
 MIKEL MELANDER [821]
 RR 1 CO RD 2800 PO BOX 304
 INDEPENDENCE KS 67301

SOUTHWEST DISTRIBUTING COMPANY (316) 227-8168 W
 FRANCIS MCELGUNN
 1409 W WYATT EARP BOX 1360
 DODGE CITY KS 67801

SPAIN'S BEEFALO (316) 776-0944 W
 JOE SPAIN [752]
 6527 S 143 RD E
 DERBY KS 67037

STEAKS & MORE (316) 642-6000 W
 DEANNA JONES [821]
 RR 1 BOX 131
 LONGTON KS 67352

STICKNEY DISTRIBUTING INC (316) 792-5224 W
 THOMAS A STICKNEY
 503 WILLIAMS PO BOX 1327
 GREAT BEND KS 67530

STURGIS COUNTRY CREST CATTLE COMPANY (913) 351-3595 W
 FLOYD JOHN STURGIS III [168]
 13616 WELLMAN RD
 WINCHESTER KS 66097

ME... BROKERS, PET FOOD MANUFACTURERS, PUBLIC WAREHOUSEMEN, WHOLESALERS

01/23/01

SYSCO FOOD SERVICES OF KANSAS CITY INC (913) 829-5555 W
DAVID KNECHT
1915 KANSAS CITY RD BX 820
OLATHE KS 66051-0820

T K O BEEF (316) 368-4366 W
KERRY O'BRIEN
688 W 710 AVE [134]
HEPLER KS 66746

TALL GRASS BISON RANCH (785) 256-2540 W
WAYNE A COPP
8820 SW 85TH
AUBURN KS 66402

TALLGRASS BISON MEAT & PRODUCTS INC (785) 256-2766 W
MARK S WHITAKER
8737 SW 85TH PO BOX 263 [427]
AUBURN KS 66402

TALLGRASS PRAIRIE PRODUCERS CO-OP (316) 273-8301 W
ANNE B WILSON
RR 1 BOX 53 [13149]
ELMDALE KS 66850

THE BUFFALO EXPRESS (785) 636-5544 W
REFUGIO C GARCIA
218 PENN AVE PO BOX 56
PAXICO KS 66526-0056

THE BUTCHER BLOCK INC (316) 285-6376 W
FRANK BURRIS
14TH & SANTA FE TRL BOX 104
LARNED KS 67550

THE E-MOOO PLACE (785) 949-2269 W
RITA A ENGLE
371A 700 AVE [841]
CARLTON KS 67448

THOMAS BERRY FARM (785) 485-2693 W
LYNN R THOMAS
14821 MADISON RD [380]
RILEY KS 66531-9659

TOPEKA COLD STORAGE LLC (785) 232-9819 PWH
RICHARD E MILLER
110 E 1ST
TOPEKA KS 66603

TREATCO INC - GREAT CO INC (316) 265-7900 AFM
MARGIE THOMAS
2300 N BROADWAY
WICHITA KS 67219

MEAT BROKERS, PET FOOD MANUFACTURERS, PUBLIC WAREHOUSEMEN, WHOLESALERS

01/23/01

TWIN WINGS OSTRICH MEATS (316) 326-6022 W
LORETTA K WEIDNER
570 S SENECA RD
WELLINGTON KS 67152

UNCLE JACK'S SAUSAGE WORKS (316) 776-0738 W
JACK G GRAVES
14010 E 79TH S [342]
DERBY KS 67037

VALLEY VISTA LOCKER (785) 246-1154 W
MARVIN W POELL
6325 NW TOPEKA AVE
TOPEKA KS 66617

WAH SENG INC DBA CHINA D' FOOD SERVICE (316) 945-2323 W
ANDY H DIEC
2535 S KESSLER ST STE A
WICHITA KS 67217-1044

WEST WINDS BUFFALO (316) 673-4404 W
RUSSELL D FINNEY
RR 1 BOX 26H [821]
HAVANA KS 67347

WICHITA FOOD SERVICES CO LLC (316) 945-1278 W
STEVEN C FISCHER
3930 W 29TH ST S #20 [FEDS.86X]
WICHITA KS 67217

WIEDMANN FARM FRESH MEATS (785) 889-4559 W
ERICH WIEDMANN
RR 1 BOX 150 [820,421]
ONAGA KS 66521

ZACCHEUS EMU RANCH (316) 331-5386 W
LABAN & RITA MOON
PO BOX 66 [421,7230]
SYCAMORE KS 67363