

MINUTES OF THE HOUSE HIGHER EDUCATION.

The meeting was called to order by Chairperson Lisa Benlon at 3:35 p.m. on January 24, 2001 in Room 231-N of the Capitol.

All members were present.

Committee staff present: Carol Rampey, Kansas Legislative Research Department
Paul West, Kansas Legislative Research Department
Stuart Little, Kansas Legislative Research Department
Avis Swartzman, Office of the Revisor of Statutes
Dee Woodson, Committee Secretary

Conferees appearing before the Committee:

Karen Miller, RN, PhD, FAAN, Dean, Schools of Nursing & Allied Health, KU Medical Center
Helen Connors, RN, PhD, Associate Dean, School of Nursing, KU Medical Center
Jo Ellen Greischar-Billiard, RN, MS, Clinical Instructor, KU Medical Center

Others attending:

See attached sheet.

The Chair called upon Dr. Karen Miller to begin the informational briefing from the Kansas University Medical Center Schools of Allied Health and Nursing. Dr. Miller shared with the Committee the success in technology-based higher education in nursing and allied health at the University of Kansas. She demonstrated The Kansas Model for Technology-based Higher Education, and told about its impact on the education of registered nurses. She said that through their distance education program in nursing, The Kansas Model, they have been working with the three other Regents' institutions with graduate nursing programs to expand access to higher education across Kansas. Dr. Miller revealed that they have received national recognition for The Kansas Model through special focus in TIME magazine and an in-depth interview from CNN

Dr. Miller said that The Kansas Model was developed in response to a critical shortage of health care providers in certain counties of Kansas in the early 1990's. She told the Committee members that the University of Kansas Medical Center School of Nursing set an academic course to increase the number of Advanced Practice Nurses working in rural and under-served urban areas. She added that these nurse practitioners are able to diagnose and treat minor acute illnesses and emergencies, as well as manage disease prevention and wellness programs for various age groups. Dr. Miller said many of them work alongside physicians in office practices. She also told the Committee that they may practice at some distance from other medical professionals, using protocols and guidelines that greatly extend the geographic reaches of our medical system. She stated that nurse practitioners are effective in caring for under-served populations and improving referral patterns among physicians and other health providers so that more patients can receive the care they need.

Dr. Miller shared with the Committee that since 1993, more than 470 family nurse practitioners have graduated from the collaborative program involving Wichita State, Fort Hays State and Pittsburg State Universities, in addition to the University of Kansas. She said that nearly 80% of these nurses are practicing in Kansas today, and most are in medically under-served areas of the state. She told the members of the Committee that investment from the Kansas State Legislature helped to create this innovative program that uses interactive television and internet-based educational methods, and explained how it was funded through Federal and Foundation grants along with the funding from the State of Kansas during FY 1994 and FY 1995.

CONTINUATION SHEET

MINUTES OF THE HOUSE HIGHER EDUCATION COMMITTEE, Room 231 of the Capitol at 3:30 p.m. on January 24, 2001.

Dr. Miller testified that it has been estimated there will be a long-term shortage of certain types of health care providers throughout the next 10 years, including nurses, physicians, clinical laboratory technicians, radiology technicians, and physical therapists, among others. She also stated that this decline in the healthcare workforce will come at a time when many Americans are reaching retirement age and needing increased health care services. She concluded by saying the University of Kansas is using educational technology to reduce the impact of these shortages in our state. (Attachment 1)

Dr. Helen Connors, Associate Dean of the School of Nursing at KU Medical Center, explained about the outreach program they have with Garden City and Dodge City. She also showed in their presentation the increased enrollment starting with 26 in 1994 and going through 1999 with 251 enrollees. She said they have two on-line degree programs which started in 1998.

Jo Ellen Greischar-Billiard, Clinical Instructor for the School of Nursing at KU Medical Center, continued the presentation with a demonstration by using a laptop computer how the internet classes are done, and explained to the Committee the interaction and communication between students and instructor. She stated that flexibility is the biggest benefit of an on-line class, and it involves active learning and being self-directed and self-paced. She said the assignments are totally on-line. Ms. Greischar-Billiard explained about the Discussion Board that is maintained on-line for the students, and includes great features such as privacy, notification of 'newly' posted messages, ability to e-mail the group, ease of editing messages, and private student folders. She said that all students participate in the weekly Discussion Board, and on-line courses, less verbal students contribute equally. (Attachment 2)

Following general discussion and questions, Chairperson Benlon asked for any bill introductions and there were none.

Chairperson Benlon adjourned the meeting at 4:35 p.m. The next meeting of the House Higher Education Committee will be Monday, January 29 Room 231-N at the Capitol.



UNIVERSITY OF KANSAS
SCHOOL OF NURSING

showing the world what nurses can do

Founded 1906

Location 3901 Rainbow Boulevard
Kansas City, Kansas 66160
Phone: (913) 588-1619
Fax: (913) 588-1615
E-mail: soninfo@kumc.edu
Website: <http://www2.kumc.edu/son>

Academic Programs

**Bachelor of Science in Nursing
RN-to-BSN/MS Program**
On-line RN-to-BSN

Master of Science in Nursing
Clinical Nurse Specialist:
Adult/Geriatric Nursing
Community Health Nursing
Psychiatric Nursing
Nurse Administrator
Nurse Midwife
Nurse Practitioner:
Adult/Geriatric Nurse Practitioner*
Family Nurse Practitioner*
FNP - Mental Health
FNP - Women's Health
Neonatal NP*

Doctoral Program
*Research Areas: Health Behavior and
Health Care Effectiveness*

Additional Study Options
BSN-to-PhD
MS in Nursing/MPH
*MS in Nursing Administration/MS in
Health Services Administration*
PhD in Nursing/MBA

Enrollment Approximately 450

Faculty 73

* Courses are available entirely on-line for the MS in Nursing with a major in FNP, Neonatal NP or Adult/Geriatric NP for BSN-prepared nurses who have already completed a certificate program for FNP's, NNPs or Adult/Geriatric NPs.

Facility

School of Nursing Building
Established 2000

- 6 levels with more than 100,000 square feet of state-of-the-art technological and research facilities
- More than 7,600 square feet are devoted to research offices and labs
- The state-of-the-art, multidisciplinary skills lab has more than 4,700 square feet and includes 10 exam rooms

School of Nursing Highlights

- One of the top 30 graduate nursing programs at a public university, the School is among the top 15 percent of all graduate nursing programs in the U.S.
- With more than \$1.4 million in funding in 1998, the KU School of Nursing ranked 14th in National Institutes of Health funding for nursing research.
- In 1997, the KU School of Nursing was included in *Time Magazine's* and *CNN's* "Heroes of Medicine." The School of Nursing's segment, the "Wired Prairie," chronicled the School's efforts to take the "classroom" to the student in rural Kansas and beyond via advanced information technologies.

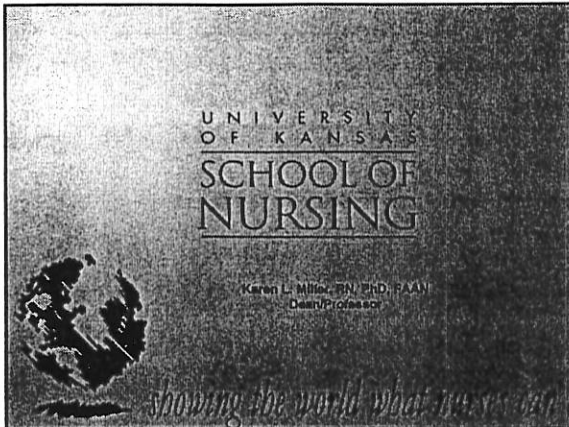
University of Kansas Highlights

- KU rates in the top 50 public universities in academic reputation according to *U.S. News and World Report's America's Best Colleges* issue for 2000. KU ranked 38th among 147 public universities ranked by the magazine.
- KU has been named one of the best college values in the nation in *Barron's Best Buys in College Education*, which lists schools with the highest academic reputation and lowest total cost.

University of Kansas Medical Center Highlights

In addition to the Schools of Allied Health, Medicine, Nursing, Pharmacy and Graduate Studies, the KU Medical Center includes KU Hospital and University of Kansas Physicians, Inc. The campus also houses five Centers of Excellence including the Theo and Alfred M. Landon Center on Aging, KU Cancer Center, Center for Environmental and Occupational Health, Ralph L. Smith Mental Retardation Research Center and Child Development Unit.





The KANSAS Model

Investment since 1993: 4.7 million Total

	402K (FY 1994)
	130K (FY 1995)
State of Kansas	532K (3 Universities)
Federal and Private	4.2 million Grants

Family Nurse Practitioner Consortium (MS) - 1993
 Graduate Degree Program - Summer 1998
 Continuous Learning (CNE) Project - Spring 1999
 RN-BSN Degree Completion Program - Spring 2000

The Chronicle of Higher Education
 Feb. 21, 1997

“The Internet has distinctive power to complement, reinforce and enhance some of our most effective traditional approaches to university teaching and learning.”

*Neil L. Rudenstine, PhD
 President, Harvard University*

Innovative Education Through Technology

University of Kansas
 School of Nursing
 KU Medical Center

Kansas Primary Care Nurse Practitioner Program:

- Partnership in Education
- Partnership in Funding

The KANSAS Model



University of Kansas Medical Center
Karen Miller, PhD/Helen Connors, PhD

Ft. Hays State University
Mary Hassett, PhD/Eileen Curran, PhD

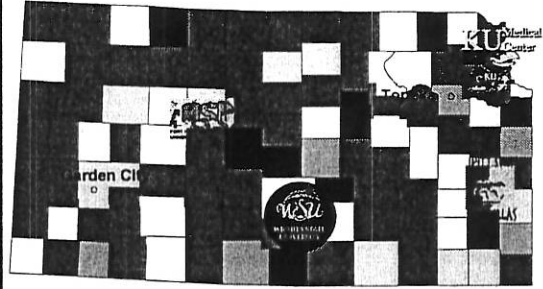


Wichita State University
Juanita Tate, PhD

Pittsburg State University
Carolyn Keil, PhD

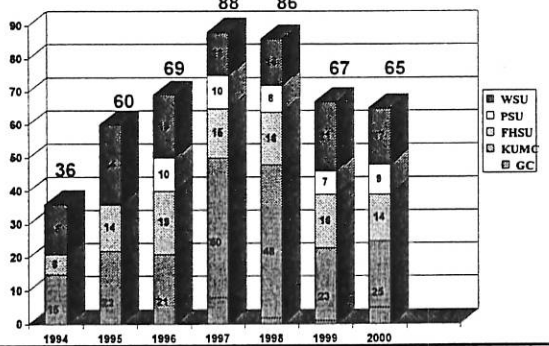


Kansas Primary Care Nurse Practitioner Classroom Sites

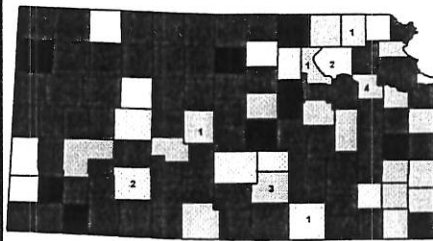


Critically Underserved Area
 Underserved Area
 Partial MUA or RHC

Graduates of the Kansas Primary Care Family Nurse Practitioner Program



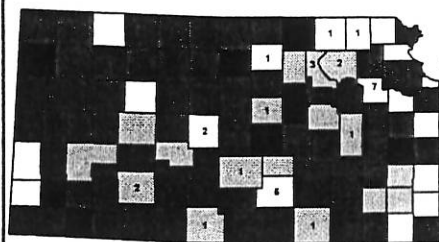
1994



State Locations:
 Kansas - 26
 Missouri - 2
 Michigan - 1
 Texas - 7

Critically Underserved Area
 Underserved Area
 Partial MUA or RHC

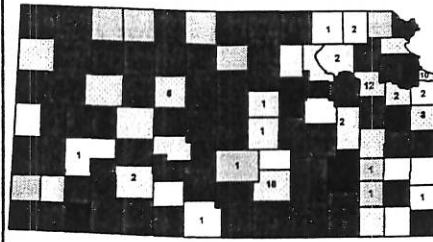
1995



State Locations:
 Kansas - 55
 Missouri - 8
 Texas - 2
 Alaska - 1
 Arkansas - 1
 Michigan - 1
 South Dakota - 1

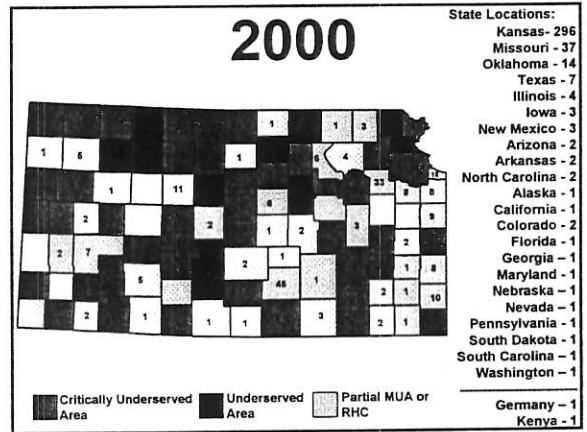
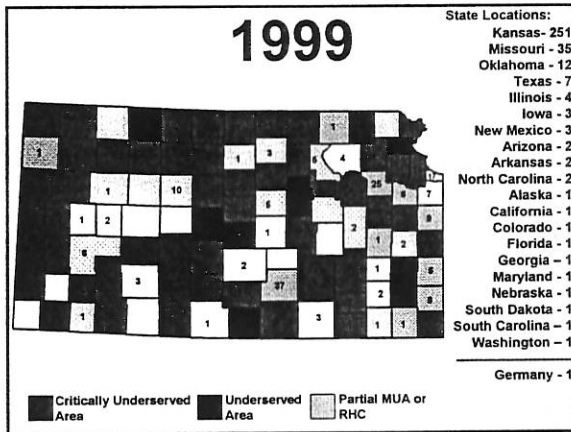
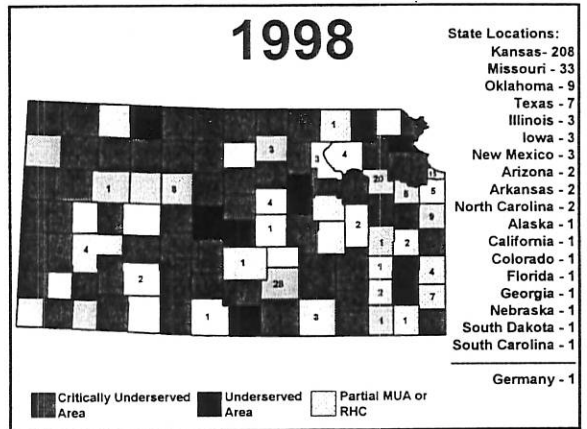
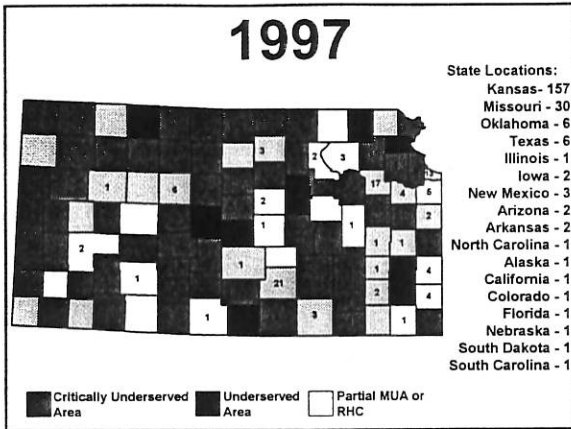
Critically Underserved Area
 Underserved Area
 Partial MUA or RHC

1996



State Locations:
 Kansas - 108
 Missouri - 17
 Texas - 3
 Iowa - 1
 New Mexico - 2
 Arkansas - 1
 Alaska - 1
 Colorado - 1
 Nebraska - 1
 South Dakota - 1
 South Carolina - 1

Critically Underserved Area
 Underserved Area
 Partial MUA or RHC



The University of Kansas Medical Center

VIRTUAL CLASSROOM

The Virtual Classroom houses courses, supplemental material and study aids for the Schools of Allied Health, Medicine, Nursing, Pharmacy as well as Continuing Education at the University of Kansas Medical Center. Click on a door above to view course listings.

Check out the new Virtual Student Center, a consolidation of resources and information for KUHC students and prospective students.

School of Allied Health | School of Medicine | School of Nursing
School of Pharmacy | Continuing Education

about | privacy policy | orientation | KU Med | Virtual Student Center

On-Line Degree Programs

- Masters Degree Completion Program
 - Practicing NPs to acquire Master's
 - Remain in local community
- BSN Degree Completion
 - Practicing nurses with Associate Degree
 - Complete college degree

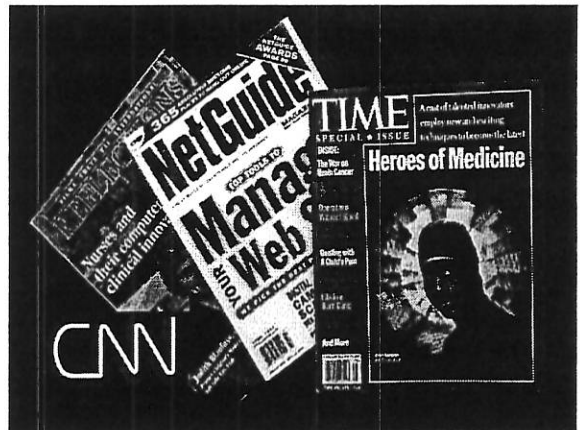


Quality Monitoring: Benchmarking Partners

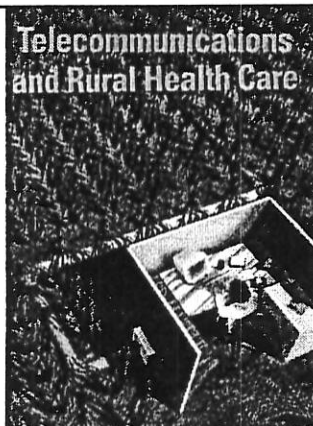
- Indiana University School of Nursing
- School of Nursing at University of Colorado Health Science Center
- University of Kansas School of Nursing
- Flashlight Program (American Association of Higher Education)

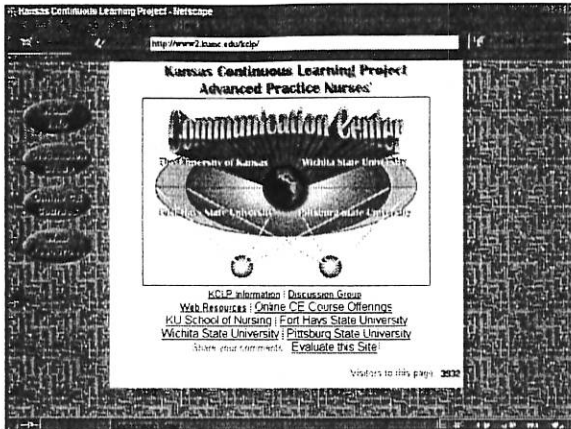
Seven Principles of Good Practice in Higher Education (Chickering and Gamson, 1987)

- Student teacher interaction
- Student-student interaction
- Active learning
- Prompt feedback
- Time on task
- High expectations
- Respect for different talents- ways of learning



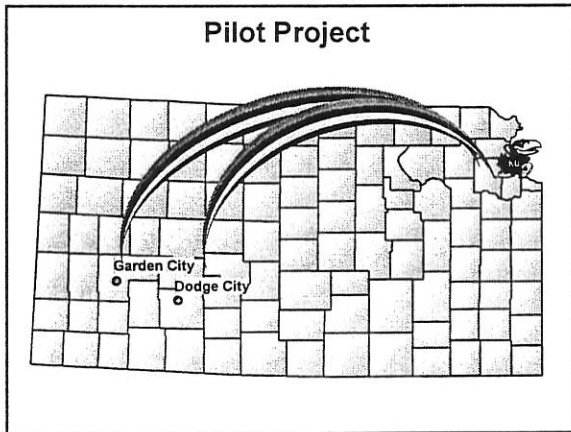
ADVANCE
for
Nurse
Practitioner
1997





Other Initiatives

- Neonatal Nurse Practitioner Track
 - UMKC, UMSL, KUMC, WSU
- Certified Nurse Midwifery Track
 - KUMC, FHSU, WSU, UMKC
- Partnership with Lippencott, Williams & Wilkins & ContinuingEducation.com
- Partnership in Quality Education
- Cerner Corp. Partnership
- Community College Articulation Model



KUMC "CENTER FOR INNOVATIONS" in Education

Vision


To empower health professionals and consumers through innovative educational experiences.

Teaching with Technology

- Higher Education courses can be effectively delivered on the Internet if you have the right people and the right resources.

Example:

- NURS 450 Health Care Issues and Professional Nursing Practice
- Jo Ellen Greischer-Billiard, RN, MS
Clinical Instructor, KU School of Nursing
<http://www.kumc.edu/vc/>



University of Kansas Technology-Based Programs

<ul style="list-style-type: none"> • School of Nursing <ul style="list-style-type: none"> – Collaborative FNP – Two degree programs online – 30 web based courses – Web enhanced courses • School of Allied Health <ul style="list-style-type: none"> – Nurse Anesthesia Program ITV & web – Physical Therapy ITV 	<ul style="list-style-type: none"> • School of Medicine <ul style="list-style-type: none"> – Web enhanced courses – Telehealth/telemedicine (telekid) • Continuing Education <ul style="list-style-type: none"> – Online Continuing education in nursing, medicine & Allied Health
---	---

Health Care Issues and Professional Nursing Practice

<http://www2.kumc.edu/instruction/nursing/nurs450/>

Jo Ellen Greischar-Billiard MS, RN
University of Kansas, School of Nursing

Goals of this Presentation:

- Describe important features of this Distance Education course including:
 - Teacher - student interaction.
 - Active learning modules.
 - Student – student interaction.

Where do the Students come from?

- Students have come from all over the state:
 - Dodge City
 - Leavenworth
 - Wichita
 - Garden City
 - Manhattan
 - Ozawkie
 - Not to mention the Kansas City Metro area
- Out of state students

Health Care Issues and Professional Nursing Practice



NURS 450: Course Overview - Netscape

File Edit View Go Communicator Help

NURS 450: Health Care Issues & Professional Nursing Practice

Overview

Description

Welcome to Health Care Issues and Professional Nursing Practice! This course is designed to guide the practicing nurse in exploration of various issues that may affect his/her practice.

Selected theories, nursing history, and current issues and trends that influence professional nursing are critically explored. A professional practice model is used as a framework for analyses and integration of economic, political, social, and cultural issues as they relate to interdisciplinary health care. Specific web-sites are used to stimulate thinking, to generate questions and lead to new ideas and perhaps direction for the practicing nurse. (2 Credit Hours)

Overview
 Content
 Discussion
 Description
 Prerequisites
 Course Objectives
 Methodology
 Grading
 Recommended Reading
 Instructor
 Help
 Profits
 Disability

NURS 450: Help - Netscape

File Edit View Go Communicator Help

NURS 450: Health Care Issues & Professional Nursing Practice

Help

- How do I use Netscape?
- Will I need any other software to complete the course?
- How do I navigate the course?
- How do I access the journal articles/supplemental readings?
- How do I attach files with the GroupWise e-mail program?
- Do you want to make sure the instructor received your e-mail? See how you can use GroupWise to look at e-mail properties.
- How do I contact the instructor?
- Where can I get technical support for the course?
- How do I use WebBoard?

How do I use Netscape?

Browsing the web can be a more satisfying experience if you know more about the features of your web browser. This

Applications in this course:

- Active learning
- Self-directed, self-paced
- Interactive communication through web-board
- Assignments totally on-line



Benefits of an on-line Course

Flexibility

- For the Student
- For the Faculty

Student Contact

New ways to present



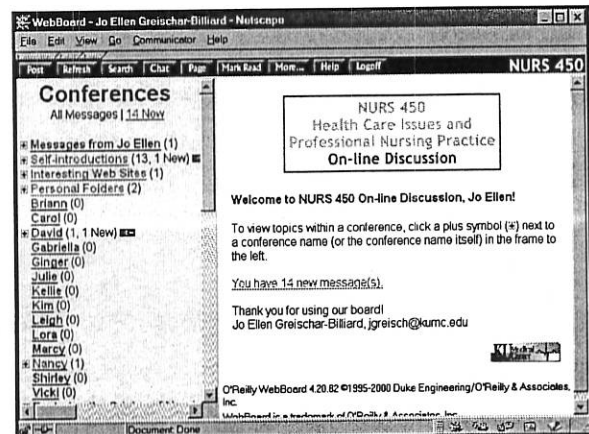
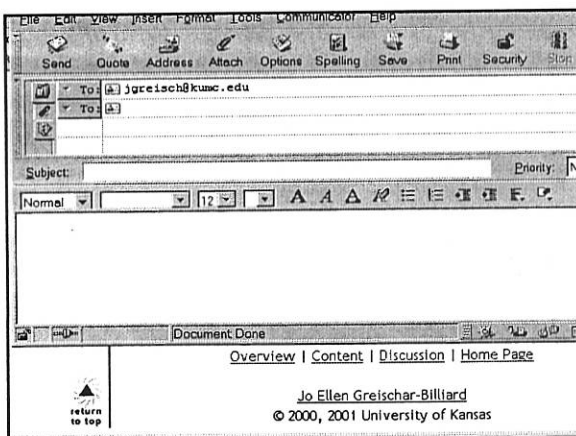
Teacher-student interaction is very important. Therefore I strive to make communication a big part of this course.



Instructor



Jo Ellen Greischar-Billiard, MS, RN
University of Kansas School of Nursing
2076 SON
Phone: 913-588-1684
E-mail: jgreisch@kumc.edu
[Instructor introduction](#)



Some of the great features of our Discussion board

- Privacy
- Notification of 'newly' posted messages
- Ability to e-mail the group
- Ease of editing messages
- Statistics on how many times each message has been read
- Private student folders



- I want the students to enjoy the course through active learning and be able to apply what they have learned.

NURS 450 Unit IV - Influencing the Political Process - Netscape

File Edit View Go Communicator Help

1. What is the state, title and number of the bill?
2. What is a general summary of the bill?
3. What is my stand on the bill?
4. What data do I have to support my view?

Kansas

You are able to access this information by visiting the [Kansas Legislature](#) link on the [Kansas](#) homepage. Click on the words 'Full text of Bills' and you may search for any bill by number or do a key word search to locate one you might want to view.

Missouri

In order to access this information at the [Missouri](#) site you need to type in keywords: In the box below the words 'Search Missouri State Government Here'. This will take you to a listing of those bills that contain your key words.

Health Care Letter

You are asked to compose a letter that you would be able to send to either a state

Document Done

You are encouraged to visit the [Legislative Branch of Nursing World](#). This great site gives guidance and does an excellent job of helping the nurse look over issues in legislation. This site includes supporting material for this assignment.


1. See an [example](#) of a bill and how to include supporting data.
2. The [sample letter](#) written to a congressman is a model you may consider when you start to write your own letter.

Learning Task

Complete the following assignment:

Criteria for Development of a Letter on

How do I build in 'student interaction'?



Conferences

All Messages | 15 New

Topic: Welcome Briann, Lora and April (1 of 1), Read 15 times

Conf: [Self-introductions](#)

From: Jo Ellen Greischar-Billiard jgreischi@kumc.edu

Date: Wednesday, January 17, 2001 03:09 PM

Welcome to Briann, Lora and April - the most recent newcomers to our Discussion Board!

Briann, you mentioned that you work at Children's Mercy, how long have you been there? I have several friends who have had toddlers on your unit - they all say it is top rate!

Lora - I hear that Menorah is a nice place to work! How often do you work? Trying to taxi around teens and pre-teens, can be a full time job!

April, I have visited your hospital several times! A few years ago,

Discussion

- All students participate in the weekly discussion board.
- In traditional classes not all students speak up during discussions.
- In on-line courses, less verbal students contribute equally.

WebBoard - Jo Ellen Greischar-Billiard - Netscape

File Edit View Go Communicator Help

Post Refresh Search Chat Page Mark Read Home... Help Logout

NURS 450

Influencing the Political Process

Nursing's Future Challenges (0)

Advanced Roles in Nursing (0)

Professional Associations and Organizational Responses to C

Weekly Issues (1)

January 22 - 28 (3, 3 New)

in Certified Registered Nurses

January 29 - February 4 (0)

February 5 - 11 (0)

February 12 - 18 (0)

February 19 - 25 (0)

February 19 - 25 (0)

February 26 - March 4 (0)

March 5 - 11 (0)

March 12 - 18 (0)

Spring Break (0)

March 26 - April 1 (0)

April 2 - 8 (0)

April 9 - 15 (0)

April 16 - 22 (0)

April 23 - 29 (0)

Topic: Certified Registered Nurses (1 of 3), Read 9 times

Conf: [January 22 - 28](#)

From: [Kim Kelley \[kelleve@clarksville.net\]](mailto:Kim Kelley [kelleve@clarksville.net])

Date: Sunday, January 21, 2001 04:19 PM

Certified Registered Nurses: AJN January 2001, Vol 101, No 1 pp. 44-52.

This article interested me because I had never heard of this. I thought that once you graduated nursing school you took the NCLEX and then you were an RN. If you wanted other certifications like ACLS, BLS, ICU etc. you just took those courses later. Now I've learned that you can certify in a specific area. I'm not sure I still fully understand it other than the fact that you just chose to go and certify as a, for example, Med/Surg nurse. For some in the article they received promotions and doors opened for them. Being new to the profession I feel that nurses need to get on the same sheet of music. Is it not enough to become an RN that now we have to be certified RN's??? Don't get me wrong I'm not saying I don't agree with certification. I'm simple trying to say we need some standardization nationwide for nurses. We have some in place already but

Post Refresh Search Chat Page Mark Read More... Help Logout NURS 4!

Shirley (0)
Vicki (0)

Exploring the Origins of Nursing (1 of 3), Read 24 times

Origins of Nursing (Kellie Kir
Origins of Nursing 12/1/01 (2
Exploring the Origin of Nursi
Exploring the Origins of Nursi

Philosophy of Nursing (1, 1 N
Theories of Nursing (1, 1 New
Professional Practice Model
Differentiated Practice Model
Nursing Practice Issues in th
Final Educational Project (0)
Rewards and Compensation
Continuing Education in Nur
Continuing Education Prese
Influencing the Political Proc
Nursing's Future Challenges

TOP | Post | Reply | Reply/Quote | Email Reply | Delete | Edit | Move
Previous | Next | Previous Topic | Next Topic | Entire Topic

Topic: Exploring the Origins of Nursing (1 of 3), Read 24 times

Conf: Exploring the Origins of Nursing

From: April Wiemers awiemers@excite.com

Date: Tuesday, January 16, 2001 02:01 PM

Unit 1 - Exploring the Origins of Nursing
April Wiemers 01-16-01

1. When looking at the past, were nurses portrayed as knowledgeable, caring individuals?

A: I believe that when the idea of nursing was first introduced, there was little to no respect for the profession. The patients were seen as dirty and not worth the effort, therefore the people who cared for them were also seen this way. Today though, the nursing profession is growing and

Summary

Distance learning:

- Is flexible for students
- Involves active Learning
- Enhances student interaction
- Is enjoyable for the learner as well as the faculty!

Additional URLs

Road Map to Web-based Courses

<http://www2.kumc.edu/instruction/edtech/orient/vrorientation.htm>

KU School of Nursing Virtual Orientation

<http://www2.kumc.edu/son/vorientation/vorientation.html>

KU School of Nursing: Course Listing

<http://www2.kumc.edu/son/courselist.html>



Questions . . .

The End

Thank you for your interest