

MINUTES OF THE HOUSE COMMITTEE ON APPROPRIATIONS.

The meeting was called to order by Chairman Kenny Wilk at 9:00 a.m. on January 24, 2001 in Room 514-S of the Capitol.

All members were present except:

Committee staff present: Alan Conroy, Legislative Research
Rae Anne Davis, Legislative Research
Amy Cramer, Legislative Research
Paul West, Legislative Research
Debra Hollon, Legislative Research
Jim Wilson, Revisor of Statutes
Mike Corrigan, Revisor of Statutes
Nikki Feuerborn, Committee Secretary

Conferees appearing before the committee: Dr. Karen Miller, Dean of Schools of Nursing and Allied Health, KUMC
Dr. Helen Connor KUMC
Jo Ellen Greischar-Billard, MS, RN, KUMC
Melissa Wangemann, Legal Counsel to Secretary of State

Others attending: See Attached

Representative Bethell moved for the introduction of legislation relating to the minimum standards for the operation of nursing pools.. Motion was seconded by Representative Neufeld. Motion carried.

Representative Hermes moved for the reintroduction of a bill similar to 2000 **HB 2546** which would bring the capital security patrol and the motor carrier inspection unit into the Kansas Police and Firemen Retirement Association. Motion was seconded by Representative Nichols. Motion carried.

Representative Hermes moved for introduction of legislation which would authorize area agencies on aging to participate in State Employees Health Care Benefits Program. Motion was seconded by Representative Shriver. Motion carried.

Dr. Karen Miller, Deans of the Schools of Nursing and Allied Health, KU Medical Center, reviewed the Kansas Model which is a distance learning program that allows nurses and members of the allied health fields to complete their education over the internet and to earn graduate degrees. There are classroom sites throughout the state which can be of benefit to the 38,000 nurses in Kansas if they wish further or continuing education.

Dr. Helen Conner explained the program which was developed in 1994 as a consortium between Wichita State University, Fort Hays State University, Pittsburg State University, and the University of Kansas (Attachment 1). The program has been touted by Time magazine as being one of the most innovative educational programs in the health care field. It allows associate degree nurses to remain in their home communities with their families and continue employment while completing their undergraduate program or earning a master's degree. Among the advanced programs for nurses which are offered are neonatal nurse practitioner, certified nurse midwifery, and nurse anesthetist. The program has been developed primarily through grants of \$4.2 million with Kansas investing \$532,000. Pilot projects are underway in Garden City and Dodge City. The ultimate goal is for the KU Medical Center to become a research and development center of innovative teaching techniques including on-line education

Jo Ellen Greischar-Billard, MS, RN, clinical instructor at the KU Medical Center, provided the Committee with explanations of how she has personally assisted in developing the program, how the program works interactively between the student and the instructor, and how students can interact with each other (Attachment 2). She also explained the different teaching modules available for senior level courses, how

proctored examinations are made available to the students, and the benefits of this type of education for the mature student. The flexible time element appears to be the most appealing facet to most students as even those who attend on-campus are becoming very interested in taking internet classes. Tuition to the parent institution is paid on-line. The question of how to charge students who reside outside the state is being studied. Students graduate from the institution where they have enrolled for the courses. Clinical supervision is done in the local area if possible, with the graduate clinicals being held at the respective campuses i.e., midwifery at the KU Medical Center with assistance from the OB/GYN faculty. One instructor can usually handle 25 to 30 graduate students in a class via the internet classroom. This increases to 50 for undergraduates. The next phase of the program includes involving community colleges.

Hearing on HB 2036 - rules and regulations filing act; time of filing; disposal by Secretary of State of copies of documents adopted by reference

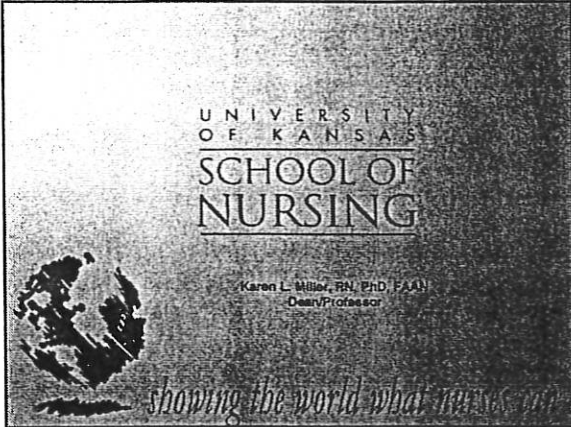
Debra Hollon, Legislative Research Department, explained that this bill would eliminate the requirement that a state agency which adopts any material by reference in a regulation file with the Secretary of State a copy of this material. The bill would also authorize the Secretary of State to return any adoption-by-reference materials on hand to the appropriate state agency or dispose of them.

Melissa Wangemann, Legal Counsel to the Secretary of State, appeared in support of the bill (Attachment 3). She said there had only been one request for any piece of this material in the past seven years.

The Committee requested a fiscal note showing the savings for each agency if they do not have to comply with the current statute.

Chairman Wilk declared the hearing closed.

The meeting was adjourned at 10:45 a.m. The next meeting is scheduled for January 25, 2001.



The KANSAS Model

The KANSAS Model

Investment since 1993: 4.7 million Total

	402K (FY 1994)
	130K (FY 1995)
<i>State of Kansas</i>	532K (3 Universities)
<i>Federal and Private</i>	4.2 million Grants

Family Nurse Practitioner Consortium (MS) - 1993
Graduate Degree Program - Summer 1998
Continuous Learning (CNE) Project - Spring 1999
RN-BSN Degree Completion Program - Spring 2000

The Chronicle of Higher Education
Feb. 21, 1997

"The Internet has distinctive power to complement, reinforce and enhance some of our most effective traditional approaches to university teaching and learning."

Neil L. Rudenstine, PhD
President, Harvard University

Innovative Education Through Technology

University of Kansas
School of Nursing
KU Medical Center

Kansas Primary Care Nurse Practitioner Program:

- Partnership in Education
- Partnership in Funding

The KANSAS Model



University of Kansas Medical Center
Karen Miller, PhD/Helen Connors, PhD

Ft. Hays State University
Mary Hassett, PhD/Eileen Cunniff, PhD

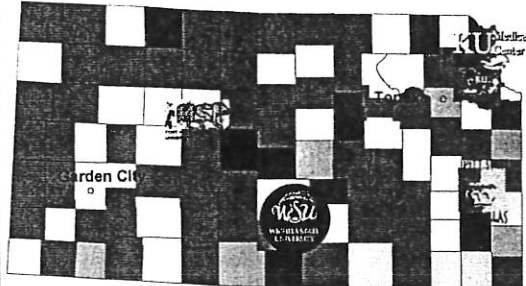


Wichita State University
Juanita Tate, PhD

Pittsburg State University
Carolyn Keil, PhD

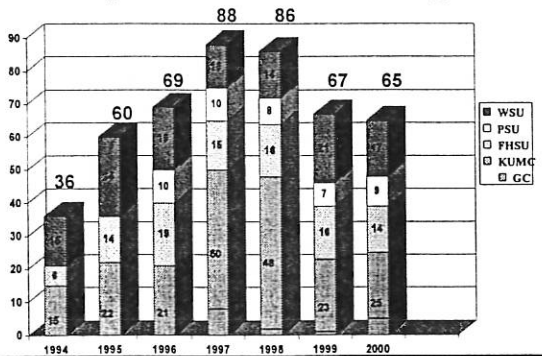


Kansas Primary Care Nurse Practitioner Classroom Sites

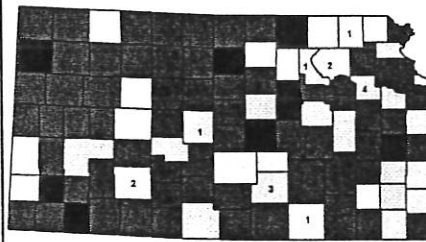


■ Critically Underserved Area ■ Underserved Area □ Partial MUA or RHC

Graduates of the Kansas Primary Care Family Nurse Practitioner Program



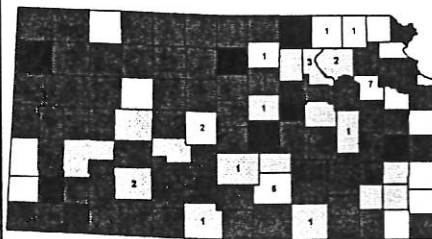
1994



State Locations:
Kansas - 26
Missouri - 2
Michigan - 1
Texas - 7

■ Critically Underserved Area ■ Underserved Area □ Partial MUA or RHC

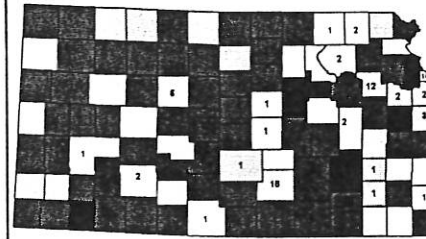
1995



State Locations:
Kansas - 55
Missouri - 8
Texas - 2
Alaska - 1
Arkansas - 1
Michigan - 1
South Dakota - 1

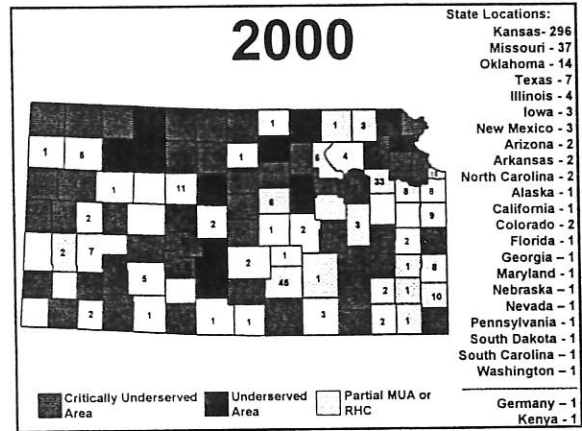
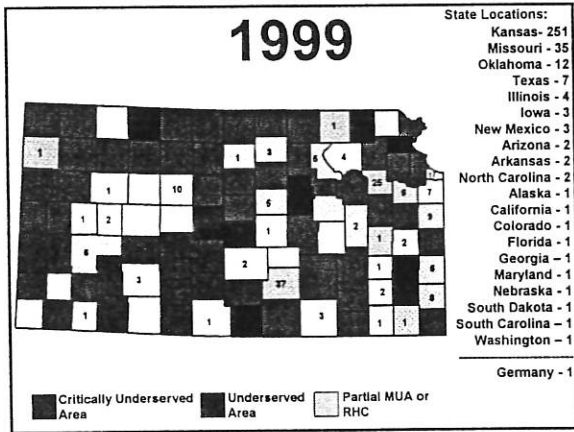
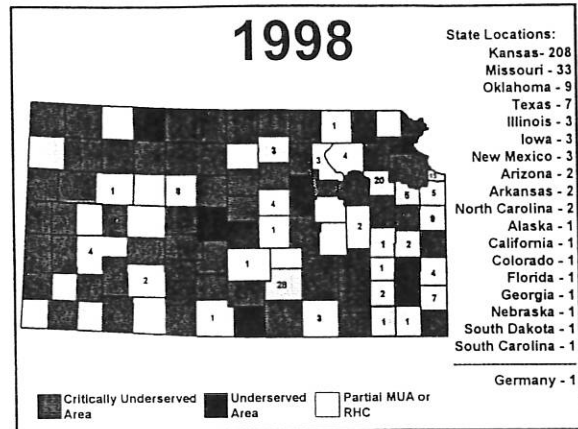
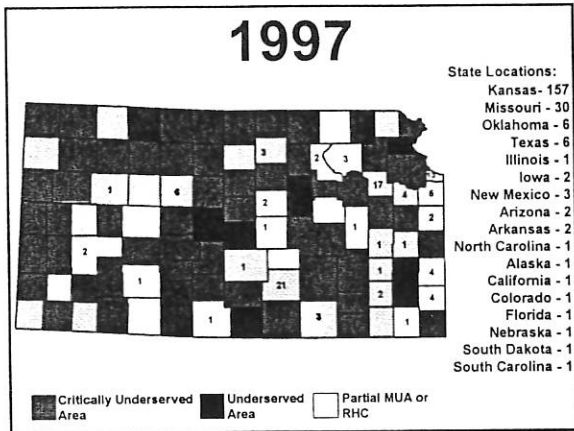
■ Critically Underserved Area ■ Underserved Area □ Partial MUA or RHC

1996



State Locations:
Kansas - 108
Missouri - 17
Texas - 3
Iowa - 1
New Mexico - 2
Arkansas - 1
Alaska - 1
Colorado - 1
Nebraska - 1
South Dakota - 1
South Carolina - 1

■ Critically Underserved Area ■ Underserved Area □ Partial MUA or RHC



The University of Kansas Medical Center

about | copyright policy | accessibility | EU Med

VIRTUAL CLASSROOM

The Virtual Classroom houses courses, supplemental material and study aids for the Schools of Allied Health, Medicine, Nursing, Pharmacy as well as Continuing Education at the University of Kansas Medical Center. Click on a door above to view course listings.

Check out the new **Virtual Student Center**, a consolidation of resources and information for KUHK, students and prospective students.

School of Allied Health | School of Medicine | School of Nursing
School of Pharmacy | Continuing Education

about | copyright policy | accessibility | EU Med | Virtual Student Center

On-Line Degree Programs

- Masters Degree Completion Program
 - Practicing NPs to acquire Master's
 - Remain in local community
- BSN Degree Completion
 - Practicing nurses with Associate Degree
 - Complete college degree

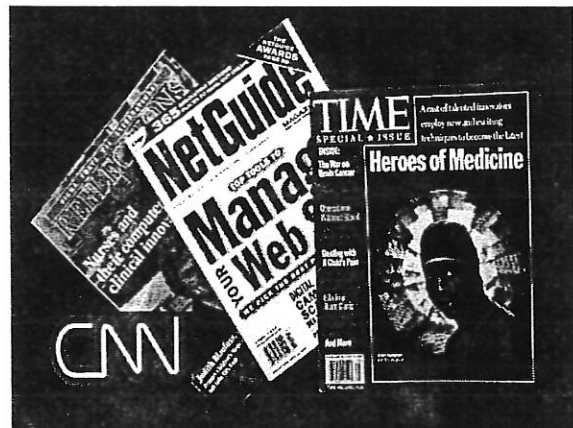


Quality Monitoring: Benchmarking Partners

- Indiana University School of Nursing
- School of Nursing at University of Colorado Health Science Center
- University of Kansas School of Nursing
- Flashlight Program (American Association of Higher Education)

Seven Principles of Good Practice in Higher Education (Chickering and Gamson, 1987)

- Student teacher interaction
- Student-student interaction
- Active learning
- Prompt feedback
- Time on task
- High expectations
- Respect for different talents- ways of learning



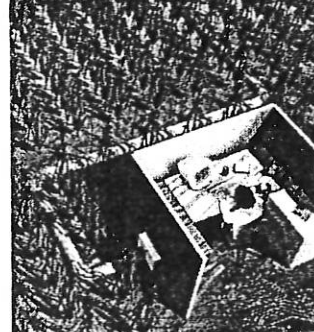
TIME SPECIAL ★ ISSUE Heroes of Medicine

The Wired Prairie



ADVANCE
for
Nurse
Practitioner
1997

Telecommunications and Rural Health Care

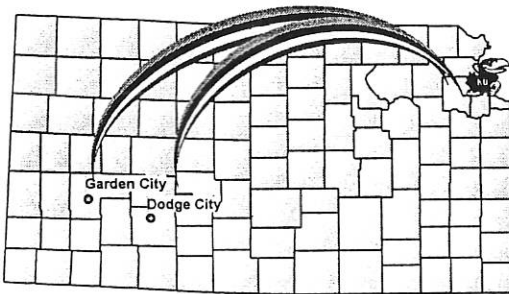




Other Initiatives

- Neonatal Nurse Practitioner Track
 - UMKC, UMSL, KUMC, WSU
- Certified Nurse Midwifery Track
 - KUMC, FHSU, WSU, UMKC
- Partnership with Lippencott, Williams & Wilkins & ContinuingEducation.com
- Partnership in Quality Education
- Cerner Corp. Partnership
- Community College Articulation Model

Pilot Project



KUMC "CENTER FOR INNOVATIONS" in Education

Vision

To empower health professionals and consumers through innovative educational experiences.

Teaching with Technology

- Higher Education courses can be effectively delivered on the Internet if you have the right people and the right resources.

Example:

- NURS 450 Health Care Issues and Professional Nursing Practice
- Jo Ellen Greischar-Billiard, RN, MS
Clinical Instructor, KU School of Nursing
<http://www.kumc.edu/vc/>



University of Kansas Technology-Based Programs

- | | |
|---|---|
| <ul style="list-style-type: none"> • School of Nursing <ul style="list-style-type: none"> – Collaborative FNP – Two degree programs online – 30 web based courses – Web enhanced courses • School of Allied Health <ul style="list-style-type: none"> – Nurse Anesthesia Program ITV & web – Physical Therapy ITV | <ul style="list-style-type: none"> • School of Medicine <ul style="list-style-type: none"> – Web enhanced courses – Telehealth/telemedicine (telekid) • Continuing Education <ul style="list-style-type: none"> – Online Continuing education in nursing, medicine & Allied Health |
|---|---|

KU School of Nursing
www2.kumc.edu/son



Health Care Issues and Professional Nursing Practice

<http://www2.kumc.edu/instruction/nursing/nurs450/>

Jo Ellen Greischar-Billiard MS, RN
University of Kansas, School of Nursing

Goals of this Presentation:

- Describe important features of this Distance Education course including:
- Teacher - student interaction.
- Active learning modules.
- Student – student interaction.

Where do the Students come from?

- Students have come from all over the state:
 - Dodge City
 - Leavenworth
 - Wichita
 - Garden City
 - Manhattan
 - Ozawkie
 - Not to mention the Kansas City Metro area
- Out of state students

Health Care Issues and Professional Nursing Practice



NURS 450: Course Overview - Netscape

File Edit View Go Communicator Help

NURS 450: Health Care Issues & Professional Nursing Practice

Discussion

Description

Prerequisites

Course Objectives

Methodology

Grading

Recommended Readings

Instructor

Help

Profits

Disability

Overview

Description

Welcome to Health Care Issues and Professional Nursing Practice! This course is designed to guide the practicing nurse in exploration of various issues that may affect his/her practice.

Recommended Readings: Selected theories, nursing history, and current issues and trends that influence professional nursing are critically explored. A professional practice model is used as a framework for analysis and integration of economic, political, social, and cultural issues as they relate to interdisciplinary health care. Specific web-sites are used to stimulate thinking, to generate questions and lead to new ideas and perhaps direction for the practicing nurse. (2 Credit Hours)

Document Done

NURS 450: Help - Netscape

File Edit View Go Communicator Help

NURS 450: Health Care Issues & Professional Nursing Practice

Discussion

Help

- [How do I use Netscape?](#)
- [Will I need any other software to complete the course?](#)
- [How do I navigate the course?](#)
- [How do I access the journal articles/supplemental readings?](#)
- [How do I attach files with the GroupWise e-mail program?](#)
- [Do you want to make sure the instructor received your e-mail? See how you can use GroupWise to look at e-mail properties.](#)
- [How do I contact the instructor?](#)
- [Where can I get technical support for the course?](#)
- [How do I use WebBoard?](#)

How do I use Netscape?

Browsing the web can be a more satisfying experience if you know more about the features of your web browser. This

HOUSE APPROPRIATIONS

DATE 1/24/01
ATTACHMENT 2

Applications in this course:

- Active learning
- Self-directed, self-paced
- Interactive communication through web-board
- Assignments totally on-line



Benefits of an on-line Course

Flexibility

- For the Student
- For the Faculty

Student Contact

New ways to present



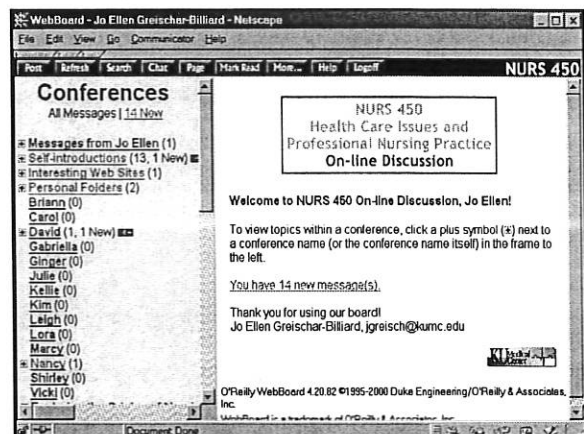
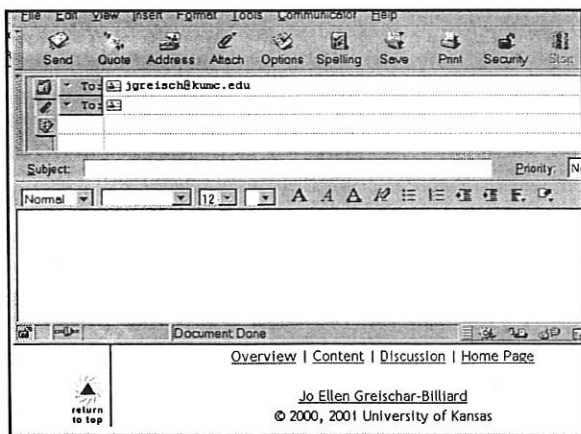
Teacher-student interaction is very important. Therefore I strive to make communication a big part of this course.



Instructor



Jo Ellen Greischar-Billiard, MS, RN
University of Kansas School of Nursing
2076 SON
Phone: 913-588-1684
E-mail: jgreisch@kumc.edu
[Instructor introduction](#)



Some of the great features of our Discussion board

- Privacy
- Notification of 'newly' posted messages
- Ability to e-mail the group
- Ease of editing messages
- Statistics on how many times each message has been read
- Private student folders



- I want the students to enjoy the course through active learning and be able to apply what they have learned.

Unit	Week	Topic
Unit I	Jan 16	Introduction to Issues and Professional Nursing Practice
	Feb 4	Self-Introduction
		Exploring the Origins of Nursing
		Philosophy of Nursing
		Theories of Nursing

- View the [presentation](#) for this session
- Complete the [required reading](#) prior to February 5, 2001
- Review the requirements for [Personal Philosophy Assignment](#).
- Submit Personal Philosophy assignment by February 5, 2001. might suggest that you type your Philosophy as a 'Word' document, or whatever program you have, and then submit it in your personal folder in the 'On-line Discussion'. You may send it as an attachment to me by e-mail or submit it via the form below. Don't forget to make a print copy for your own files, before submitting to me!

Name:

E-mail:

Personal Philosophy Assignment:

Unit	Week	Topic
Unit IV	Apr 2	Affecting Change in Health Care
	May 7	Influencing the Political Process
		Nursing's Future Challenges
		Advanced Roles in Nursing
		Professional Associations and Organizations
		Organizational Responses to Changing Health Care Needs

Affecting Change in Health Care

Influencing the Political Process

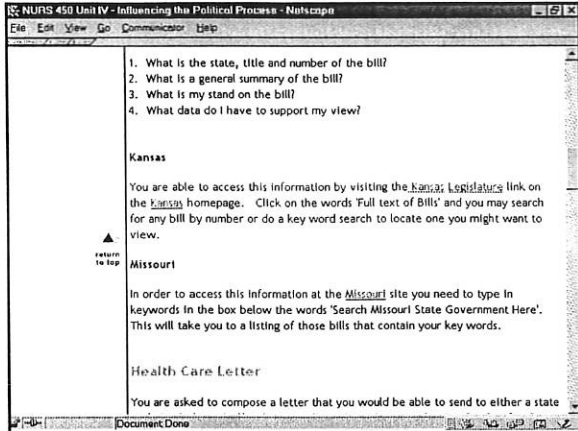
Purpose

The purpose of this session is to promote critical thinking about a selected health care issue and to communicate those thoughts to an elected federal or state congressperson in written format.

National Health Care Issues

You can watch the national evening news or pick up nearly any large metro area or national newspaper and there will be one or more articles covering a piece of health care legislation. Being aware of such issues is the first step to influencing the political process. In this session I would like you to gain a better understanding of how you can have an individual effect on the political process. Listed below are several federal web sites that will provide you a glimpse into the current world of politics. The first is [Congress Today](#).

This site tells you what is happening in Congress. When you visit this site you can



You are encouraged to visit the Legislative Branch of Nursing World. This great site gives guidance and does an excellent job of helping the nurse look over issues in legislation. This site includes supporting material for this assignment.

1. See an example of a bill and how to include supporting data.
2. The sample letter written to a congressman is a model you may consider when you start to write your own letter.

Learning Task

Complete the following assignment:

Criteria for Development of a Letter on

How do I build in 'student interaction'?

Conferences

All Messages | 15 New

Topic: Welcome Briann, Lora and April (1 of 1), Read 15 times
 Conf: [Self-introductions](#)
 From: Jo Ellen Greischer-Billiard (jgreisch@kumc.edu)
 Date: Wednesday, January 17, 2001 03:09 PM

Welcome to Briann, Lora and April - the most recent newcomers to our Discussion Board!

Briann, you mentioned that you work at Children's Mercy, how long have you been there? I have several friends who have had toddlers on your unit - they all say it is top rate!

Lora - I hear that Menorah is a nice place to work! How often do you work? Trying to taxi around teens and pre-teens, can be a full time job!

April, I have visited your hospital several times! A few years ago,

Discussion

- **All** students participate in the weekly discussion board.
- In traditional classes not all students speak up during discussions.
- In on-line courses, less verbal students contribute equally.

WebBoard - Jo Ellen Greischer-Billiard - Netscape

Topic: Certified Registered Nurses (1 of 3), Read 9 times
 Conf: [January 22 - 28](#)
 From: [Kim Kelley \(kkelley@clarksville.net\)](#)
 Date: Sunday, January 21, 2001 04:19 PM

Certified Registered Nurses: AJN January 2001, Vol 101, No 1 pp. 44-52.

This article interested me because I had never heard of this. I thought that once you graduated nursing school you took the NCLEX and then you were an RN. If you wanted other certifications like ACLS, BLS, ICU etc., you just took those courses later. Now I've learned that you can certify in a specific area. I'm not sure I still fully understand it other than the fact that you just chose to go and certify as a, for example, Med/Surg nurse. For some in the article they received promotions and doors opened for them. Being new to the profession I feel that nurses need to get on the same sheet of music. Is it not enough to become an RN that now we have to be certified RNs??? Don't get me wrong I'm not saying I don't agree with certification. I'm simple trying to say we need some standardization nationwide for nurses. We have some in place already but

Post Refresh Search Chat Page Mark Read More... Help Logout **NURS 4!**

Shirley (0)
Vicki (0)

Exploring the Origins of Nursing (Kellie Kir...
Origins of Nursing (Kellie Kir...
Origins of Nursing (Kellie Kir...
Exploring the Origins of Nursi...
Exploring the Origins of Nursi...
Philosophy of Nursing (1, 1 N...
Theories of Nursing (1, 1 New...
Professional Practice Model...
Differentiated Practice Model...
Nursing Practice Issues in th...
Final Educational Project (0)
Rewards and Compensation...
Continuing Education in Nur...
Continuing Education Preser...
Influencing the Political Proc...
Nursing's Future Challenges

TOP | Post | Reply | Reply/Quote | Email Reply | Delete | Edit | Move
Previous | Next | Previous Topic | Next Topic | Entire Topic

Topic: Exploring the Origins of Nursing (1 of 3), Read 24 times

Conf: Exploring the Origins of Nursing

From: April Wiemers awiemers@excite.com

Date: Tuesday, January 16, 2001 02:01 PM

Unit 1 - Exploring the Origins of Nursing
April Wiemers 01-16-01

1. When looking at the past, were nurses portrayed as knowledgeable, caring individuals?

A: I believe that when the idea of nursing was first introduced, there was little to no respect for the profession. The patients were seen as dirty and not worth the effort, therefore the people who cared for them were also seen this way. Today though, the nursing profession is growing and

Summary


- **Distance learning:**
 - Is flexible for students
 - Involves active Learning
 - Enhances student interaction
 - Is enjoyable for the learner as well as the faculty!

Additional URLs

Road Map to Web-based Courses
<http://www2.kumc.edu/instruction/edtech/orient/vrorientation.htm>

KU School of Nursing Virtual Orientation
<http://www2.kumc.edu/son/vorientation/vorientation.html>

KU School of Nursing: Course Listing
<http://www2.kumc.edu/son/courselist.html>



Questions . . .

The End

Thank you for your interest

RON THORNBURGH
Secretary of State



First Floor, Memorial Hall
120 SW 10th Ave.
Topeka, KS 66612-1594
(785) 296-4564

TESTIMONY TO THE HOUSE APPROPRIATIONS COMMITTEE
ON HB 2036
JANUARY 24, 2001

The Secretary of State appreciates the opportunity to speak in support of HB 2036, which relates to the rules and regulations filing act.

Under current law, whenever a state agency adopts any material by reference in a regulation, the agency must maintain and make available to the public the adopted reference materials. The agency is also required to file a second copy of the materials with the Secretary of State. HB 2036 would eliminate the requirement that the second copy of materials be filed with and stored by the Secretary of State. The bill also allows the Secretary of State to return any adoption-by-reference materials on hand to the appropriate state agency or to dispose of them.

HB 2036 would save storage space in the Secretary of State's office by eliminating the future need to store these materials, and by eliminating the current stacks of materials that we keep in our basement. Removal of the materials from our office should not affect the public's right to review the materials, as they are available from the adopting state agency. The adopted materials are often available from other sources as well, such as public libraries, federal agencies and the internet. Our office has seen no evidence that storing the materials at our office is beneficial to the public; in fact, we have received only one request for adoption-by-reference materials in the past ten years.

HOUSE APPROPRIATIONS
DATE 1/24/01
ATTACHMENT 3

Most importantly, HB 2036 will save state agencies money by not requiring them to produce a second copy of materials. Adoption-by-reference materials can be costly, and eliminating one set will cut the cost in half. Because the materials sit in our basement and are rarely requested by the public, the cost imposed upon a state agency to provide a second copy is unwarranted.

Again, I appreciate the opportunity to appear today in support of HB 2036 and I would be happy to answer any questions of the committee.

Melissa Wangemann, Legal Counsel
Deputy Assistant Secretary of State