

Approved: 4-7-00
Date

MINUTES OF THE SENATE COMMITTEE ON PUBLIC HEALTH AND WELFARE.

The meeting was called to order by Chairperson Sandy Praeger at 1:00 p.m. on March 30, 2000 in Room 526-S of the Capitol.

All members were present except:

Committee staff present:

Lisa Montgomery, Revisor of Statutes
JoAnn Bunten, Committee Secretary

Conferees appearing before the committee:

Stephen Paige, Director, Bureau of Consumer Health, KDHE

Others attending: See attached list

Continued Discussion on SB 661 - Inspection of certain retail food stores and food processing plants

Stephen Paige, Director, Bureau of Consumer Health, KDHE, briefed the Committee on a chart showing a traditional supermarket of today and what portion of the supermarket KDHE is currently licensing and what revenue is generated from that licensing. The chart also showed the number of prepared food areas in a supermarket and the number of food processing plants that would be effected by **SB 661**. Mr. Paige noted 4,000 establishments would be involved. (Attachment 1)

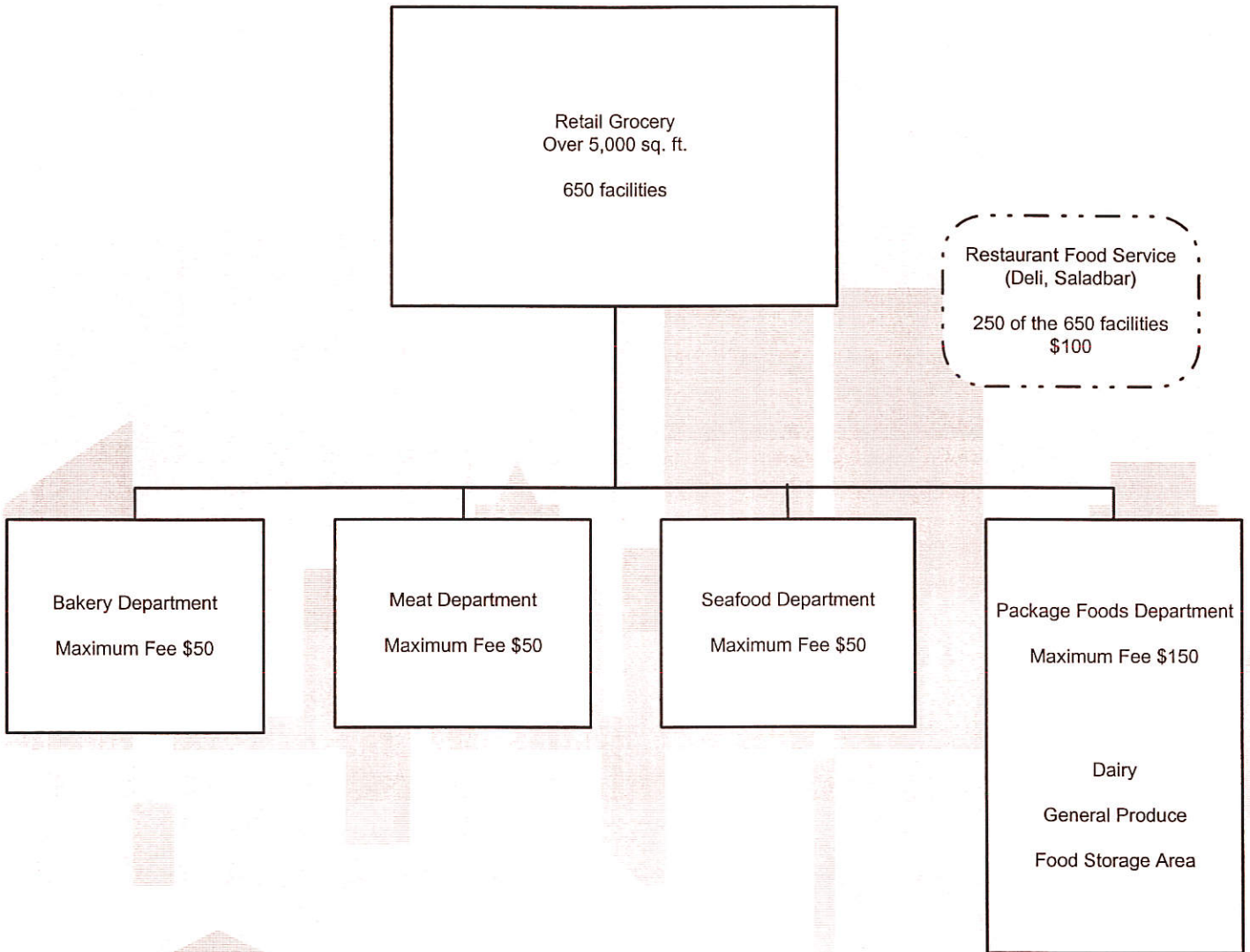
During Committee discussion Mr. Paige defined how certain retail food stores and markets would be assessed the fee, and the definition of food salvagers which was described as food being sold at reduced prices from truck wrecks, overstocked warehouses and post dated items. It was pointed out that \$400,000 had been taken out of the KDHE budget, and the Chair noted this could be restored by a proviso that would grant funding for one year when the Omnibus bill is worked. Senator Becker requested that KDHE provide information on what surrounding states charge for inspection of retail food stores.

Adjournment

The meeting was adjourned at 1:30 p.m.

Retail Grocery Establishments

Thursday, March 30, 2000



Retail Grocery Establishments

Thursday, March 30, 2000

Small Retail Grocery
and Convenience Stores
Under 5,000 sq. ft.

1,750 facilities

Restaurant Food Service
(Deli, Saladbar)

1,500 of the 1,750 facilities
\$100

Package Foods Department
Maximum Fee \$50

Dairy

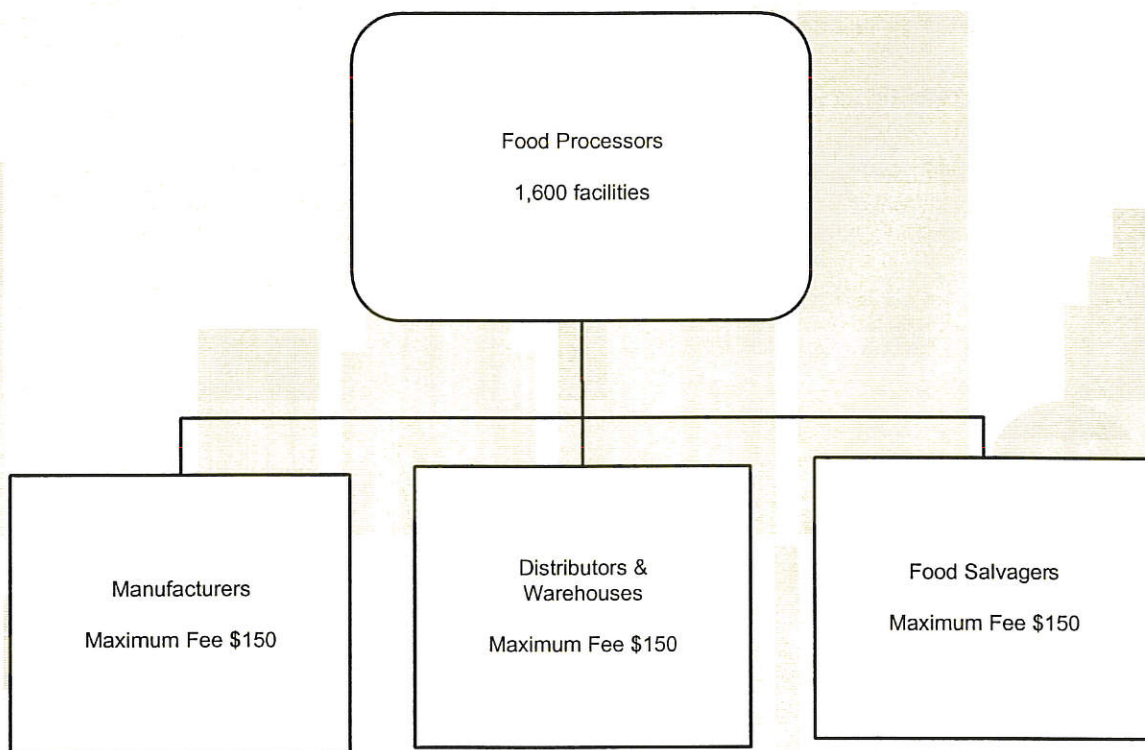
General Produce

Food Storage Areas

Food Processing Plants

Thursday, March 30, 2000

"Food processing plant" means a commercial operation that manufactures, packages, labels, or stores FOOD for human consumption and does not provide FOOD directly to a consumer.



The Kansas Department of Health and Environment intends to adopt fee regulations that accommodate smaller food processors.