

Approved:

January 26, 1999
Date

MINUTES OF THE HOUSE COMMITTEE ON HEALTH AND HUMAN SERVICES.

The meeting was called to order by Chairperson Garry Boston at 1:30 p.m. on January 19, 1999 in Room 423-S of the Capitol.

All members were present except:

Committee staff present: Kathy Sparks, Legislative Research Department
Renae Jefferies, Revisor of Statutes
June Evans, Secretary

Conferees appearing before the committee: Rochelle Chronister, Secretary, SRS
Janet Schalansky, Deputy Secretary, SRS

Others attending: See Attached List

The Chairperson stated the minutes of the January 13 meeting was before the committee and would ask for approval later.

The Chairperson introduced and welcomed Secretary Rochelle Chronister.

Janet Schalansky, Deputy Secretary, SRS gave an overview of the agency, going through "Finger-tip facts", and reviewing the different commissions under SRS. SRS has undergone tremendous change over the last several years. This is nothing new to the agency that is charged with dealing with some of society's most basic problems - be it hunger, child or elderly abuse or neglect, sickness and frailty, or basic financial need.. SRS has been in existence 25 years. There have been many changes. Privatization of several child welfare services will continue to undergo a quality improvement process. The Children's Mental Health Initiative designed to provide expanded home and community-based services to children with severe emotional disturbances will be continued. SRS wants to have children in family/foster homes and are recruiting foster families. Children get along better in a family setting.

A new program, Health *Wave*, which provides health insurance to Kansas children who lack insurance coverage was initiated January 1 and it is expanding rapidly. It was anticipated that 1600 children would be covered by this insurance at this time, but 4000 have been enrolled so far. It is expected that 42,000 children will be covered at the end of two years and it is estimated that 60,000 children will be covered. This program was introduced by handing out postcards to school children. The coordinators are the school superintendents and they have done a very good job getting the information out to families. The cost for insurance is \$10.00 per family.

The Economic and Employment Support Commission is the old welfare program and funded by federal dollars. The money is based on the clients eligible; there is no cap from the federal government. The money per household varies, but is approximately \$67.00 per person.

The Rehabilitation Services realizes there is a need to be within close proximity of the clients and are expanding offices and trying to get services no further than 100 miles for any client.

At the current time there are 775 children being served under the Mental Health and Developmental Disabilities Commission. (See Attachment #1)

The Chairperson stated that a list of frequently used abbreviations and acronyms were distributed. (See Attachment #2).

Representative Geringer moved and Representative Showalter seconded the approved of the minutes of January 13, 1999. The motion carried.

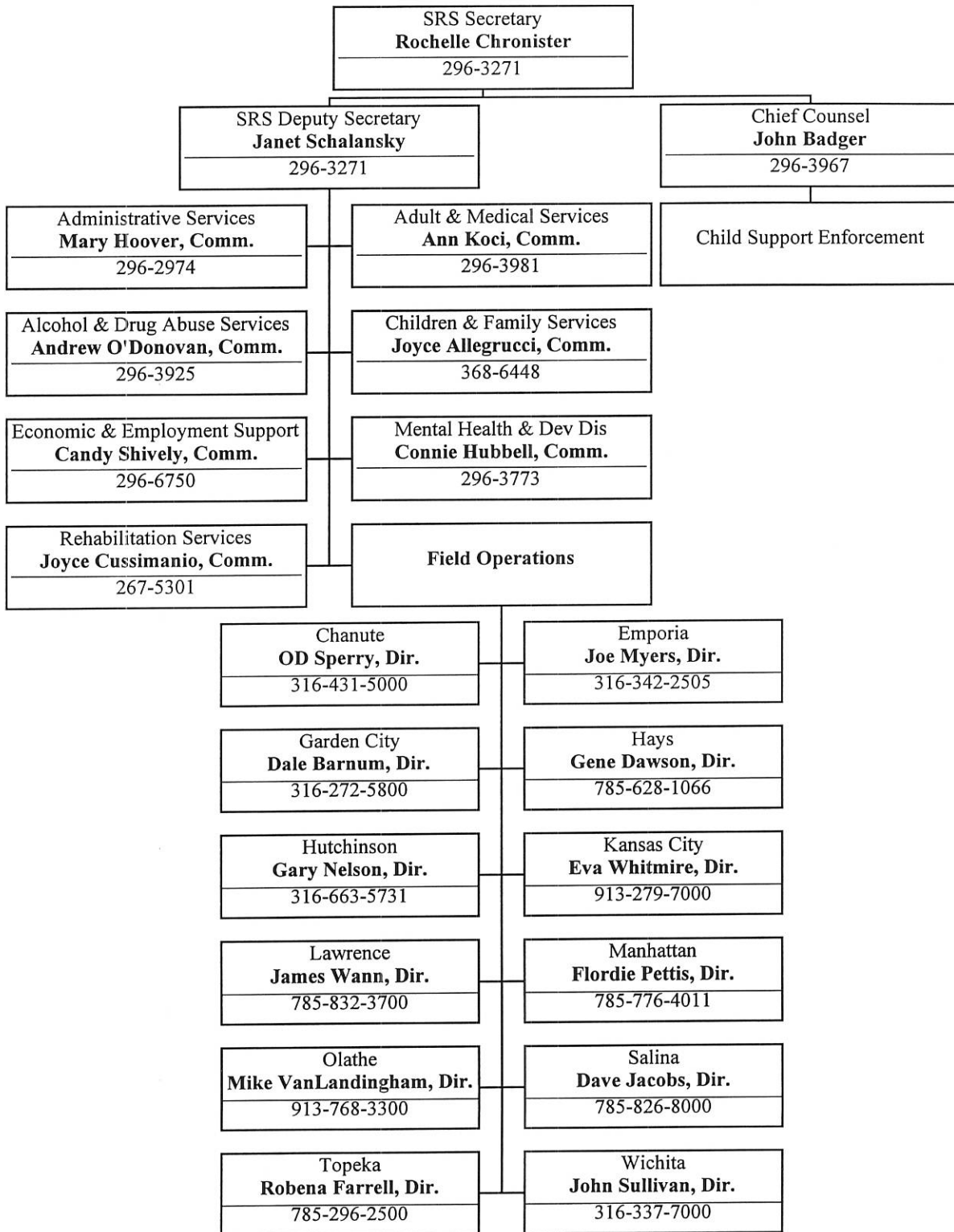
The meeting adjourned at 2:25 and the next meeting will be January 20.

HUMAN AND HEALTH SERVICES

DATE January 19, 1999

NAME	REPRESENTING
Julie Thomas	Division of the Budget
Kim M. Miller	Inten Hall
Stacy Seldan	Heinlein Child.
Rick Cuprice	Health Medicaid
Derek B. Blaylock	Intern for Teresa Sittenauer
Brian Tongier	Intern for Kansas Legal Services
Rochelle Chronister	SRS
Candy Shively	SRS
Janet Schalansky	SRS
Ann Koc	SRS
K. J. in	KCA & KANA
Tim Wood	Via CHRISTI HEALTH System
Danielle Noe	Governors Office
Melissa P. New	Ks Childrens Service League
Michelle Peterson	Peterson Public Affairs Group
Kerrie Ann Brown	KS Fruit Consulting
Mike Huthless	SRS
Bill Henry	KS Governmental Consulting

Department of Social and Rehabilitation Services



Health & Human Services
 1-19-99
 Atch # 1

FREQUENTLY USED ABBREVIATIONS AND ACRONYMS

The following acronyms are those that may be used in the Senate Committee on Public Health and Welfare and House Committee on Health and Human Services by staff or conferees in discussion of health issues. The listing is not intended to be a complete one, and the Committee may wish to suggest terms to be added to the glossary.

Acronym/ Abbreviation	Health Terms
ADAS	Alcohol and Drug Abuse within the Department of Social and Rehabilitation Services
AHA	American Hospital Association
AMA	American Medical Association
ANA	American Nurses Association
AOA	American Optometric Association or American Osteopathic Association
APA OR KAPA	Kansas Administrative procedures Act
AphA	American Pharmaceutical Association
APHA	American Public Health Association
ARNP	Advanced Registered Nurse Practitioner (Kansas)
CHC	Community Health Center
CHIP	Child Health Insurance Program (HealthWave)
CMHC	Community Mental Health Center
DD	Developmental Disability
DEA	Drug Enforcement Administration (federal)
DH&E OR KDH&E	Department of Health and Environment (Kansas)
DO	Doctor of Osteopathic Medicine
ECF	Extended Care Facility
EMS	Emergency Medical Services
EPSDT	Early and Periodic Screening, Diagnosis, and Treatment Program also called Kan-Be Healthy
FDA	Food and Drug Administration (federal)
FFP	Federal Financial Participation
FPL	Federal Poverty Level
HCFA	Health Care Financing Administration
HHS	Department of Health and Human Services (federal)
HIAA	Health Insurance Association of America
HMO	Health Maintenance Organization
ICF/MR	Intermediate Care Facility for the Mentally Retarded
JCAHCF	Joint Commission on the Accreditation of Health Care Facilities (formerly Joint Commission on the Accreditation of Hospitals)
KAHA	Kansas Association of Homes for the Aging

*Health & Human Services
1-19-99
Atch # 2*

Acronym/ Abbreviation	Health Terms
KHCA	Kansas Health Care Association
KHA	Kansas Hospital Association
KMS	Kansas Medical Society
KPA	Kansas Pharmacists Association
KSNA	Kansas State Nurses Association
MCH	Maternal and Child Health Program
MHDD	Mental Health and Developmental Disabilities Services within the Department of Social and Rehabilitation Services
MMIS	Medicaid Management Information System
NCSL	National Conference of State Legislatures
NIH	National Institute of Health
NIMH	National Institute of Mental Health
PA	Physician Assistant
PPO	Preferred Provider Organization
PPS	Prospective Payment System
PSRO	Professional Standards Review Organization
PT	Physical Therapy
RN	Licensed Registered Professional Nurse
RHC	Rural Health Clinic (federally certified)
SSI	Supplemental Security Income
TANF	Temporary Assistance for Needy Families also TAF
UR	Utilization Review
VR	Vocational Rehabilitation within the Department of Social and Rehabilitation Services
WIC	Women, Infants, and Children's Program

