

MINUTES OF THE HOUSE TOURISM COMMITTEE.

The meeting was called to order by Chairperson Barbara P. Allen at 1:30 p.m. on January 23, 1997 in Room 522-S of the Capitol.

All members were present except: Rep. Donovan
Rep. Presta

Committee staff present: Carolyn Rampey, Legislative Research Department
Tom Severn, Legislative Research Department
Renaë Jefferies, Revisor of Statutes
Nancy Kirkwood, Committee Secretary

Conferees appearing before the committee: Marcie Penner, Director, Kansas Sampler Foundation
Steve Williams, Secretary, Department of Wildlife and Parks

Others attending: See attached list

Marcie Penner, Director, Kansas Sampler Foundation, gave an overview of the mission of The Kansas Sampler Foundation (Attachment 1).

Steve Williams, Secretary of Department of Wildlife and Parks, gave an overview of the Department (Attachment 2)

Chairperson Allen concluded the meeting at 2:35 p.m.

The next meeting is scheduled for January 28, 1997.

Presentation to the
House of Representatives
Tourism Committee
January 23, 1997

by the
KANSAS SAMPLER FOUNDATION

Executive Director - Marci Penner
Assistant Director - Betty Van Osdol

978 Arapaho Road
Inman, KS 67546
316/585-2374
Fax 316/585-2217

*Tourism
January 23, 1997
Attachment 1*

THE MISSION OF THE KANSAS SAMPLER FOUNDATION

MISSION STATEMENT

To preserve and sustain rural culture

GOALS

Foster a statewide appreciation of Kansas's rural culture
Develop and sustain effective networks to bolster rural communities
Develop and sustain funding capacity of this organization to serve rural communities

COMPREHENSIVE PLAN

The Kansas Sampler Foundation has developed a plan to do a comprehensive tourism assessment in Kansas communities. It is a plan that would undoubtedly increase visitor traffic to all rural communities, impact community development and economic energy, and fit into Kansas and local history educational curriculum. This plan has been enthusiastically endorsed by numerous rural communities and counties.

The assessment system we have developed is as beneficial and realistic to the 302 Kansas towns with less than a 400 person population as it is to communities over 15,000 in population. We would facilitate an action plan with communities that is reasonable and functional for volunteer-led communities and is designed to empower them to help themselves.

The guarantee of this system is that it records and perpetuates the story of a town. The data would be compiled in a handbook and on a Web Site, as well as to be used in educational curriculum and marketing brochures.

This is a standard system that would show the uniqueness of each community at the same time that it shows the diversity of our state. The strength of the system is that it can work in every town and the more communities that participate in this plan, the stronger the promotion of all rural communities will be.

Note: The rate at which this plan can be accomplished is dependent on funding.

PROJECTS & IMPACT OF THE KANSAS SAMPLER FOUNDATION

THE PROJECT: KNOWING THE TOWNS

IMPACT:

- ◆ Of the 340 towns with less than a 500 population KSF has had personal contact with 170.
- ◆ Of the 169 towns with a population between 500 and 2,000 KSF has had personal contact with 126.
- ◆ Of the 81 towns with a population between 2,000 and 10,000 KSF has had personal contact with 71.
- ◆ Of the 22 towns with a population between 10,000 and 25,000 KSF has had personal contact with 14.

Personal contact means we have been to the towns and talked with the people and included them in guidebooks, newsletters, slide shows, or explorer trip itineraries; or the town has participated in the festival, workshops, or KSF seminars; or we've given a speech in the town or consulted with them.

THE PROJECT: KANSAS EXPLORERS CLUB

Notes: The Kansas Explorers Club is designed to educate people about what there is to see and do in rural communities, to help people 'see Kansas with new eyes', and to be aware and concerned about the rural economic drama.

IMPACT:

- ◆ 587 people have become members of the Kansas Explorers Club and receive a bimonthly newsletter.
- ◆ Caldwell has started a 'branch' club and 17 women travel as a group in Kansas.
- ◆ Explorers feel good about spending money in towns they visit.
- ◆ The annual Explorer Club trip makes visits to rural communities.
- ◆ The newsletters provide exposure to many rural communities.
- ◆ A song-and-dance trio has developed out of the Kansas Explorers Club. They take their act statewide encouraging people to explore Kansas.
- ◆ The excitement about traveling Kansas is spreading by word of mouth.

THE PROJECT: WE KAN NEWSLETTER

Notes: The We Kan! newsletter is designed to be an information flow between rural community leaders about common issues and grassroots solutions. It is also sent to the media, educators, state officials, and some legislators.

IMPACT:

The We Kan! network ties together over 700 rural leaders, rural supporters, media, educators, state officials, and legislators statewide through the *We Kan!* bimonthly newsletter.

THE PROJECTS: KANSAS SLIDE SHOWS and PROGRAMS, SYNDICATED ARTICLES, RADIO SHOWS

IMPACT:

- ◆ Tens of thousands of Kansans have learned how to see Kansas with new eyes and have found out more about what there is to see and do in Kansas as a result of these Kansas Sampler Foundation projects.
- ◆ Five hundred students have come to the Kansas Sampler Center to learn about exploring Kansas and to go on an exploring nature walk.

THE PROJECT: WE KANI AWARDS

IMPACT:

- ◆ 39 rural leaders have been recognized in the last four years for their dedicated efforts in helping to preserve and sustain rural culture.

THE PROJECT: EDUCATIONAL SEMINARS, WORKSHOPS

IMPACT:

- ◆ 30-40 rural leaders annually gather at Valley Falls for a Motivational & Support Gathering facilitated by KSF. Almost all KSF projects have been launched from this seminar.
- ◆ KSF has provided seminars, workshops, or presentations to nearly 3,000 people at local, statewide, regional, and national levels.

THE PROJECT: THE KANSAS SAMPLER FESTIVAL

Notes: The purpose of the festival is to help the public know what there is to see and do in Kansas. In seven years, the festival has grown from 50 exhibitors and attendance of 1,000 to 162 exhibitors and attendance of 8,000. There is no other event in Kansas that brings together so many communities.

IMPACT:

- ◆ 8,000 people attended the festival in 1996. These people included:
 - Tour operators and families searching for Kansas day trip ideas.
 - Foreign students and new Kansas residents who wanted to learn more about Kansas.
 - Families looking for rural communities to move to.
 - Small town representatives looking for hope and solutions for their community issues.
 - Nine Kansas bus tours.
 - Kansas retailers looking for Kansas product inventory.
 - Potential bed-and-breakfast owners looking for advice on how to start a bed-and-breakfast.
- ◆ 91 of the 105 counties were represented in the 160 exhibit booths. The festival had the following impact:
 - Kechi gained an antique store.
 - Jewell found a preacher.
 - Many communities have already had bus tours, family, and individual traffic initiated at the festival.
 - Kansas product producers found retail outlets and had good sales.
 - Exhibitors were taped by a Kansas public television crew for upcoming features.
 - Kansas performers gained statewide bookings.
 - Media in attendance found story leads and have followed up on several.
 - The networking among exhibitors has proved to be one of the most valuable aspects of the festival.
- ◆ Local impact of the festival:
 - 85 volunteers helped stage the festival, 27 were students. There is a volunteer waiting list.
 - Exhibitors stayed in motels in McPherson and Hutchinson.
 - Nearby Buhler held the Buhler Frolic the same weekend and attendance was helped by festival traffic and joint promotion.
 - Inman benefits from tremendous exposure.
- ◆ Other festival impacts:
 - Food vendors collectively grossed nearly \$20,000
 - Nine We Kani awards were presented to rural leaders
 - Ellis County wants to host a similar event in northwest Kansas

KANSAS SAMPLER FESTIVAL 1997 EXHIBITORS

COMMUNITIES WITH EXHIBITS

Abilene
Admire
Argonia
Arkansas City
Ashland
Atchison
Belle Plaine
Beloit
Buhler
Caldwell
Caney
Canton
Chanute
Clifton
Colby
Concordia
Cottonwood Falls
Council Grove
Dighton
Elk Falls
Ellinwood
Ellsworth
Elmdale
Emporia
Garnett
Glasco
Goessel
Great Bend
Greensburg
Halstead
Hays
Hesston
Hillsboro
Hutchinson
Inman
Kansas City
Kechi
Kingman
Liberal
Lincoln
Lindsborg
Logan
Lucas
Marion
Marquette
Marysville
McPherson

Meade
Moundridge
Mulvane
Newton
Nickerson
Nicodemus
North Newton
Oberlin
Ottawa
Park City
Partridge
Peabody
Phillipsburg
Plevna
Pratt
Pretty Prairie
Sharon Springs
Stockton
Sylvan Grove
Topeka
WaKeeney
Walton
Wamego
Waterville
Wellington
Wichita

COUNTIES WITH EXHIBITS

Barber County
Butler County
Clark County
Cloud County
Coffey County
Crawford County
Edwards County
Finney County
Graham County
Grant County
Jewell County
Kingman County
Labette County
Lyon County
Meade County
Montgomery County
Osborne County
Rice County
Russell County
Seward County
Washington County

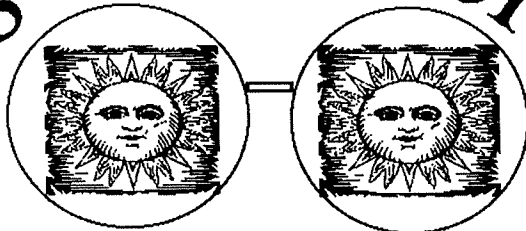
REGIONAL EXHIBITS

Glacial Hills Tourism
Kansas State Historical Society
Kansas State Library
Kansas State Tourism
Lake Region Historical Society
North Central B&B's
North Central Tourism
Prairie People Tourism
Wild West Country Tourism

Join the

Kansas Explorers Club

See Kansas
With New Eyes!



A project of the Kansas Sampler Foundation
Contact Marci Penner or Betty Van Osdol, 316/585-2374
978 Arapaho Road, Inman, KS 67546

The Kansas Explorers Club is created to inspire and encourage the exploration and appreciation of Kansas. If it is the search you crave, the Kansas Explorers Club is for you!

KANSAS EXPLORER CLUB MEMBERS RECEIVE...

- ◇ The bimonthly *EXPLORER* newsletter that promotes the art of exploring, tells about places to explore, and shares information from other explorers.
- ◇ A classic annual membership card and number.
- ◇ Eligibility to go along on Explorer trips.
- ◇ Eligibility to receive the roving LuWonderer award.
- ◇ News about Explorer classes.
- ◇ An invitation to the Kansas Explorers Club meeting at the Kansas Sampler Festival.
- ◇ Knowledge of the secret explorers ritual!

The Club was developed out of a deep love and concern for Kansas communities.

FIND OUT ABOUT WHERE TO FIND THE BEST:

- Cinnamon rolls
- Chicken fried steaks
- Juicy hamburgers
- Scenic drives
- Kansas experiences!

The art of exploring is promoted to encourage travel to Kansas communities of every size. Explorers learn to appreciate the subtle beauty and intriguing history of our state, as well as learn to 'feel' the ongoing economic drama of rural Kansas.

FIND THE RURAL CULTURE IN EVERY TOWN:

History, architecture, geography, commerce, cuisine, customs, art, and people.

You'll receive the most recent EXPLORER newsletter with your membership .

COST OF MEMBERSHIP

\$18.61

(Kansas became a state in 1861)

The \$18.61 membership is good for you or your entire family (anyone living under the same roof). You'll receive one membership card per family. Additional cards can be purchased for \$2.

We already have 540 members! Be one of the first 600 to join!
Your number will appear on your annual membership card.

EXPLORERS HAVE FUN TRAVELING KANSAS!

REGISTRATION FORM

Explorers Name _____
 (Other family members) _____
 Address _____
 City _____ State _____
 Zip _____ Phone _____
 Renewal ____; First time member ____.

Send \$18.61 for individual or family membership to:
Kansas Explorers Club
978 Arapaho Road, Inman, KS 67546
Make checks payable to: Kansas Sampler Foundation

HOW IS THE KANSAS SAMPLER FOUNDATION FUNDED?

The projected budget for 1997 is \$129,685
Projected earned income is \$63,027
Projected festival sponsorship is \$13,800
Projected fundraising needs are \$52,858

Regarding projected earned income:

- ◆ About 50% of the earned income comes from the Kansas Sampler Festival
- ◆ About 45% comes from membership to the We Kan! newsletter and the Kansas Explorers Club
- ◆ The remaining 5% comes from educational seminars and fundraisers

Regarding fundraising needs:

We will apply for grants and seek corporate funding and hope to increase festival sponsorship to meet the remaining \$52,858 of the budget.

The following page is taken from a recent We Kan! newsletter. It shows the variety of people and organizations that join the We Kan! network. This shows members who have renewed or joined since the previous newsletter.

MEMBERSHIP LEVELS

AD ASTRA (\$1,000+)

SUNFLOWER (\$500+)

MEADOWLARK (\$250+)

COTTONWOOD (\$100+)

Martha Slater, Hutchinson
Hiawatha Convention & Visitors Bureau
George & Marjorie Gantz, Holton
Fred and Nancy Kerr, Pratt
Senator Dick & Sue Bond, Overland Park

BUFFALO (\$50+)

Council Grove Convention & Visitors Bureau
The Kansas Cosmosphere & Space Center, Hutchinson
Jackson County Economic Development, Holton
Independence Convention & Visitors Bureau
Dean & Ginny Graves, Shawnee Mission
Coffey County Economic Development
The Paddock Restaurant, Eureka
Flint Hills Windmill & Pump Service, Benton

HOME ON THE RANGE (\$25+)

Kathy Kajinami, McPherson
Genna Ott, Kansas Center for Comm. Econ. Dev., Lawrence
Wildwood Cellars, Mulvane
LuAnn & Michael Miller, Concordia
Lindsborg Chamber of Commerce
Emporia Visitors Bureau
Mems Baird, Brooklyn, NY
Kechi Chamber of Commerce
Bobbie Pray, Lawrence
Washington County Economic Development
Edwin R. & Laura Schmidt, Buhler
Jim Ruth, Temple Theater, Oklahoma City, OK
John & Pat Krueger, Wichita
Visitor Information Center, Oswego
Grant County Museum, Ulysses
Finney County Conv. & Tourism Bureau, Garden City
Smoky Hill River Festival, Salina
LandMark Inn & Oberlin Mercantile Co., Oberlin
George & Phyllis Miller, Ellinwood
Phillip & Carolyn Fishburn, Haven
Darrell & Joyce Albright, Pretty Prairie
Elkhart PRIDE, Evelyn Heintz Emberton, Elkhart
The Cottage House, Council Grove
Fred Rice, Manhattan
1874 Stonehouse on Mulberry Hill, Cottonwood Falls
Debra Alexander-Wilson & Jerry Wilson, Hill City
Harper County Economic Development Committee
Betty Anderson, Kimble Cliff B&B, Manhattan
Osage County Chronicle, Kurt Kessinger, Burlingame
Thomas County Historical Society, Colby
Kansas State Fiddling & Picking Championships, Lawrence
Mildred Francis, Holton
Mulberry Creek, Linda Bailey, Morrill
The Big Well, Greensburg
Bob Neier, Wichita
Wichita Convention & Visitors Bureau
Earl & Deanne Wright, Council Grove
David & Loretta Ross, Horton
Doniphan County Economic Development, Troy
Irv & Mildred Schroeder, Hillsboro
Dr. Patricia Altwegg, Cloud Co. Comm. College, Concordia

WE KAN! (\$15)

Five State Free Fair, Liberal
Oxford Chamber of Commerce
Central Community Church, Dale Lewis, Wichita
Phyllis Clark, Douglass
Anita Cheatum, Kingman
Lynda Fort, Ulysses
High Plains Museum, Goodland
Harley Koop, Hillsboro
Brad Woellhof, Kansas State Historical Soc., Pleasanton
Jay Yoder, Partridge
Oregon Trail Adventure Co., Big Springs
Rush County Historical Society, LaCrosse
Derby Senior Center, Dee Williams, Derby
Kansas Wildscape, Lawrence
Windmill Inn, Chapman
The Home Place, Yoder
Merrill & Boots Raber, Newton
Coffey County Museum, Burlington
Prairie House, Leon
Butler County Historical Society, El Dorado
American Discovery Trail, Dick Dilsaver, Wichita
Payton Optical, Hutchinson
Friends of Maxwell, Canton
Kansas Landscape Arboretum, Wakefield
Adolyn Bartels, Inman
Pioneer-Krier Museum, Ashland
Old Cowtown Museum, Wichita
Ness County Historical Society, Ness City
Mary Honeyman, Council Grove
Charles Gibson, Hutchinson
KSU-Reno County Extension, South Hutchinson
The National Agriculture Center, Bonner Springs
Hawthorne Ranch, Eureka
Steve & Rosslyn Schultz, Lucas
Mr. & Mrs. D.E. Becker, Iola
Ed & Maurine Buller, Clyde
Laurel Miller, Hesston
Steiny's Popcorn, Downs
Margaret Luke, Beloit
Linn County Economic Development, Mound City
Susie Haver, Concordia
Scott City Chamber of Commerce
Cloud Co. Community College, Travel & Tourism, Concordia
Robert Collins, Andover
Plevna General Store, Plevna
Potwin PRIDE
River City Tour Company, Wichita
Jerry & Jeanette Siemens, Pratt
Bill Reynolds, Whitewater
Rocky Ridge Resort, Fredonia
Pratt Chamber of Commerce
Linda McKay, Lawrence
Don & Mildred Harding, A Nostalgic B&B Place, Hillsboro
Liberal Parks and Recreation, Liberal
Osborne County Economic Development Dept.
Frank Niles, Topeka

TIME TO RENEW? Check your mailing label!

1. The date beside your name indicates when you last paid membership dues. You will not be sent a membership bill. Just fill out the form and renew so that you will continue to receive *We Kan!* Thank you!
2. If there is no date beside your name it means you are receiving a courtesy copy. Please join today to assure that you will continue to receive this newsletter.

1-8

-1-8

Kansas Sampler Foundation philosophy:

Rural tourism is telling the story of your rural culture by providing authentic experiences and utilizing existing resources.

Rural tourism is a tool to help sustain a community.

Rural Culture Elements: History, architecture, geography, commerce, cuisine, customs, art, and people.

EXAMPLES OF SUCCESSFUL RURAL TOURISM VENTURES

- Elk Falls (Geography, Art, Commerce, People)
- Downtown Peabody (Architecture, Commerce)
- The Historic Augusta Theatre (Architecture, Customs)
- Prairie Flower Crafts, Alden (Commerce)
- Twilight Tours, Hays (History, Customs)
- Lee Richardson Zoo, Garden City (Geography)
- Koester House, Marysville (Cuisine)
- Safari Zoological Park, Caney (Geography, People)
- Brown Grand Theatre, Concordia (Architecture, Customs)
- LandMark Inn B&B, Oberlin (Architecture, History, Commerce)
- Iris's Bakery, Hickok (Cuisine, Customs, People)
- Big Brutus, West Mineral (Commerce, History)
- Chaplin Nature Center, Arkansas City (Geography)

UNIQUE RURAL ATTRACTIONS

- Post Musical Homestead, Geuda Springs (Art, People)
- St. Mary's Church, St. Benedict (Architecture)
- Soda Fountains (Customs)
- The Breaks, Cheyenne County (Geography)
- Soule Canal, Ingalls (History)
- Round Barns (Architecture, Customs)
- Tall Oaks, Troy (Art)
- Carousel Carver, Kinsley (Art, People, Customs)
- Old Weigh Station, Sitka (Cuisine)
- Circle of Churches, Ellis County (Architecture)
- Tiemeyer's, Lincolnville (Commerce)
- Rock-A-Thon, Cuba (Customs)
- Buster Keaton, Piqua (People, History)
- Alcove Springs, Blue Rapids (Geography, History)



STATE OF KANSAS

DEPARTMENT OF WILDLIFE & PARKS

Office of the Secretary
900 SW Jackson, Suite 502
Topeka, KS 66612
913/296-2281 FAX 913/296-6953



TO: The Honorable Barbara Allen, Committee on Tourism

FROM: Steve A. Williams, ^{SW} Secretary, Kansas Department of Wildlife and Parks

SUBJECT: Overview of the Kansas Department of Wildlife and Parks

DATE: January 23, 1997

The Kansas Department of Wildlife and Parks (KDWP) was created by ERO 22 which was approved by the 1987 Legislature. The KDWP became effective on July 1, 1987 and merged the Kansas Fish and Game Commission with the Kansas Park and Resources Authority. The state statutes that pertain to organization and powers of the KDWP are contained in KSA 1997 supp. 32-801 et. seq. The mission of the KDWP is to conserve and enhance Kansas' natural heritage, its wildlife and its habitats to ensure future generations the benefits of the State's diverse, living, resources; to provide the public with opportunities for use and appreciation of the natural resources of Kansas, consistent with the conservation of those resources; and to inform the public of the status of the natural resources of Kansas.

The KDWP is a cabinet level agency administered by a Secretary appointed by the Governor with approval by the Senate. A seven member Commission on Wildlife and Parks is appointed by the Governor and performs an advisory role in assisting the Secretary. In addition, the Commission governs the establishment of Department regulations.

The KDWP is required by State Statute to maintain an administrative facility in Topeka and an operations facility in Pratt. The Topeka office is the location of the Office of the Secretary, the Assistant Secretary for Administration, and the engineering, budget, planning, and federal grants functions. The Pratt office is the location for the Assistant Secretary for Operations, division directors, and the support staff for the Divisions of Administrative Services, Law Enforcement, Parks, and Fisheries and Wildlife. In addition, the KDWP maintains five regional offices located in Hays, Topeka, Dodge City, Wichita, and Chanute.

In order to accomplish its mission, the KDWP operates numerous programs for the benefit of the public. The Department maintains 24 state parks, 41 state fishing lakes, and numerous wildlife areas. The KDWP is also developing the Prairie Spirit Rail Trail between Ottawa and Iola. In addition, the KDWP recently initiated the Walk-in Hunting Access (WIHA) program to increase opportunities for public hunting. Other programs utilized by the KDWP to serve the public include the Community Lake Assistance Program (CLAP), the distribution of federal aid for local parks developments, Hunter Education, and Becoming an Outdoor Woman.

Tourism
January 23, 1997
Attachment 2

The KDWP has provided to each of you a packet of material that will assist in further understanding the Department. In addition, material regarding the FY 1998 Governor's Budget Recommendations and proposed 1997 legislation is provided.

Attachments

Williams\Allen.mem



STATE OF KANSAS
DEPARTMENT OF WILDLIFE & PARKS

Office of the Secretary
900 SW Jackson, Suite 502
Topeka, KS 66612
913/296-2281 FAX 913/296-6953



MEMORANDUM

TO: Members of the House Committee on Tourism

FROM: Secretary Steve Williams

DATE: January 23, 1997

SUBJECT: Proposed 1997 Legislation Summary

Statutory Authorization for the KDWP to Exceed Established Expenditure Limitations

Summary: The proposed legislation would create a permanent statute to allow the KDWP to exceed expenditure limitations established by an annual appropriation bill for the Wildlife Fee Fund, Park Fee Fund, or the Boating Fee Fund. This authority is necessary for the KDWP to comply with requirements established by the USFWS for the use of federal aid. The authority requested in the proposed legislation would allow KDWP to adjust expenditures between the three funds listed above in order to balance program expenditures with the appropriate funding source.

Creation of Wildlife and Parks Nonrestricted Fund

Summary: The request of the KDWP is to establish a special revenue fund entitled "Wildlife and Parks Nonrestricted Fund." This fund would be used to deposit monies which are not subject to USFWS restrictions. Creation of the fund was recommended by the Legislative Post Auditor (audit 94-44) as a method of allowing the KDWP to comply with federal aid requirements.

Prairie Spirit Rail Trail State Park

Summary: The Prairie Spirit Rail Trail is a 52 mile linear corridor that has been established through the rail banking and conversion process. Eighteen miles of the trail have been fully developed and opened to the public in 1996. The second phase of an additional 18 miles is currently under construction and expected to be opened to public use in 1997. The trail is currently operated and maintained by the State Parks Division of the KDWP. The designation of

this property into the state park system would allow the Prairie Spirit Rail Trail to be funded through the Park Fee Fund rather than through State General Funds.

Boating Under the Influence

Summary: KDWP proposes to amend existing BUI statutes 32-1131, (crime); and 32-1134, (use of evidence to mirror current Kansas DUI laws). In addition, KDWP proposes the inclusion of a new statute, 32-1138, (preliminary screening test for breath alcohol concentration; request be officer, grounds; notice required; refusal to take test is a class C misdemeanor; use of results of test; additional tests), to mirror current Kansas DUI laws.

Boating Safety Education Certification

Summary: The KDWP is pursuing legislative options for creating a more complete boating safety program. The desired initiative would require that all boat operators born on or after January 1, 1986 possess a card certifying that they have successfully completed a boating safety course and have passed a proficiency test. Such certification cards would be required in order to operate a boat on all public waters of Kansas, and would be subject to suspension or revocation.

Permitting the Use of Crossbows to Take Wild Turkey

Summary: The KDWP proposes to amend existing KSA 32-932, Physical Disability, Crossbow Permits, to include the taking of wild turkey.

Elimination of Art Component of Migratory Waterfowl Habitat Stamp Program

Summary: The department and DU recognize that the art production and collector sale component of the waterfowl stamp program is no longer financially beneficial; though the sale of stamps to waterfowl hunters remains an important source of State funds that are used to match DU contributions for waterfowl conservation. As a result, the department is proposing, with DU support, the elimination of the art production and collector sale component of this program. All other statutes associated with the migratory waterfowl stamp would remain intact. Non-artistic stamps would continue to be required of waterfowl hunters, and the sale proceeds would continue to accrue to the Migratory Waterfowl Propagation and Protection Fund.

Deer Permits for Nonresident Students and Military Personnel

Summary: The Department of Wildlife and Parks propose to change existing Kansas Statute Annotated 32-980, Form, contact, resident, nonresident, armed forces personnel, to allow the issuance of resident big game permits and other department issues to nonresident, active duty

military stationed in Kansas and nonresident, full-time students attending college in Kansas.

K.S.A. 32-980, Section (2) allows a person who is on active duty in the armed forces of the United States to purchase licenses, permits, stamps and other issues of the department as a Kansas resident.

Section (1) allows nonresident active duty military stationed in Kansas, to purchase resident hunting and fishing license only. Section (3) allows nonresident full-time students attending college in Kansas, to purchase resident hunting and fishing license only.

The wording of Sections (1) and (2) would indicate that active duty military personnel stationed in Kansas and full-time students attending college in Kansas, would not be allowed to purchase resident big game permits or other department issues. Historically any person with a valid resident hunting license has been issued resident big game permits upon application. To discontinue this practice would cause confusion for the persons affected, require a new and more complicated big game application form, impose violations on persons affected or and adversely affect established M.O.U.s with Fort Riley Military Reservation regarding elk and deer hunting permits.

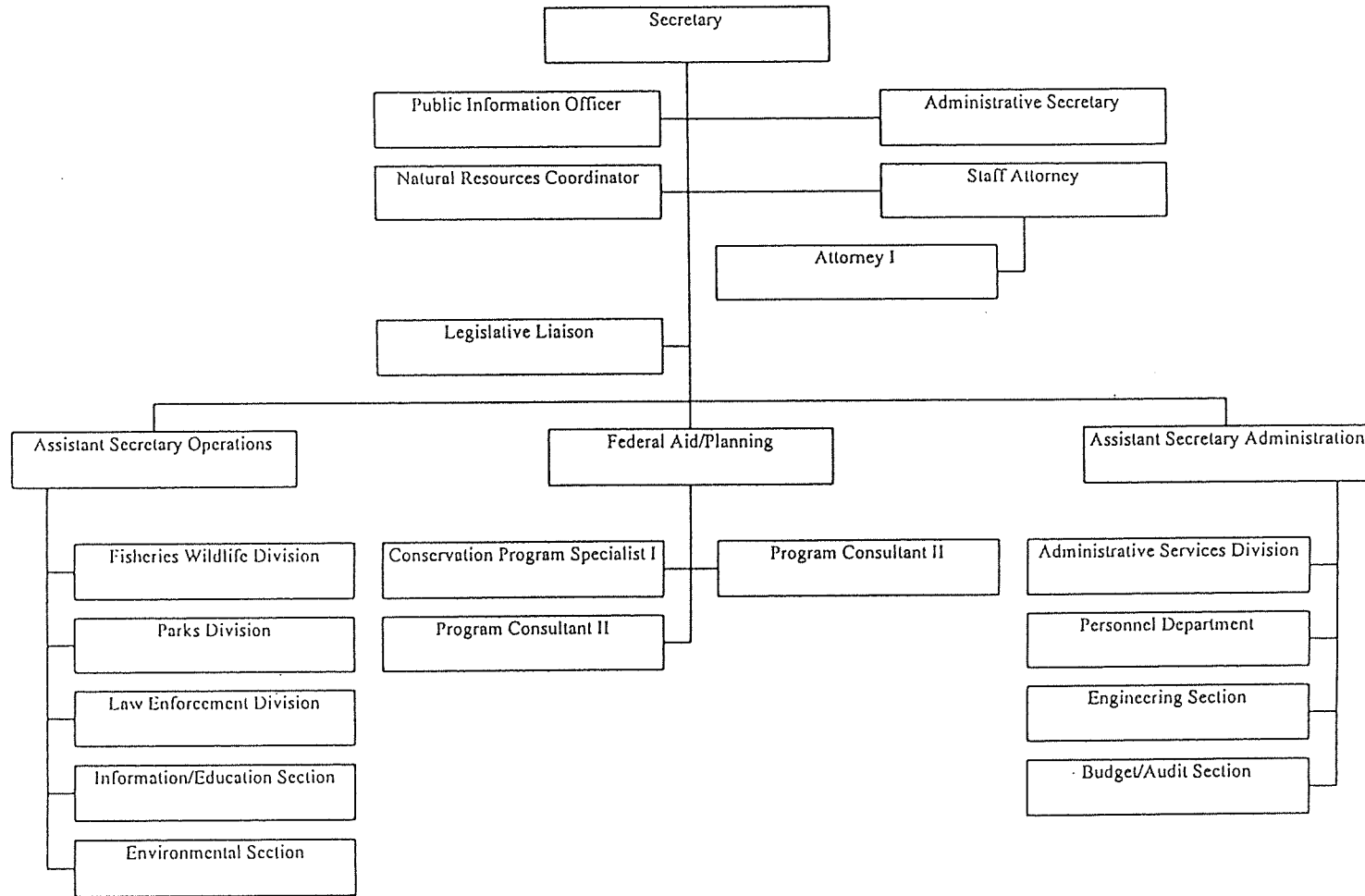
The following change would allow the department to continue to sell big game permits and other department issues to persons eligible for resident hunting and fishing licenses.

Nonresident Deer Hunting Permits

Summary: The Kansas Department of Wildlife and Parks administers a deer permitting system which has allowed non-resident hunters to apply for and receive permits to hunt in Kansas. K.S.A. 32-937 was enacted in the 1993 session of the Kansas legislature and Kansas implemented it's first non-resident deer hunt in 1994. Major provisions of this statute are:

1. Provides authority for the Secretary to establish permit numbers within certain constraints:
 - a. total number of nonresident deer firearm permits issued for a season, in a management unit, shall not exceed 5% of the total number of resident deer permits authorized for that unit.
 - b. total number of nonresident deer archery permits issued for a season, in a management unit, shall not exceed 5% of the total number of resident permits of the same type and unit.
 - c. if unlimited for season or management unit , then the percentage limitations (5%) apply based on the total number of resident firearm permits and the total number of archery permits, respectively, issued in the management unit during the preceding similar season.
 - d. permits may only be issued in units if resident firearm permits of such type remained unissued after the close of the previous year's first permit selection process in that management unit.

Department of Wildlife and Parks



9-2

e. if a nonresident is successful one year, then they are ineligible the following year.

Clarification of Law Enforcement Authority for Conservation Officers

Summary: KDWP seeks to amend KSA 32-808; and 32-1048, relative to enforcement and arrest authorities of department conservation officers. The proposed amendment would clarify the jurisdictional authorities. The department seeks to establish language that would provide enforcement authority to conservation officers anywhere in the state, rather than restricted to department lands only. This action is necessitated by recent Attorney General's opinion.

BUDGET SUMMARY

13-Jan-97

	FY 1996 Actual	FY 1997 Gov Rec	FY 1998 Gov Rec	
Administrative Services	2,153,764	1,945,465	2,020,977	
Grants-in-Aid	287,506	300,000	300,000	
Executive Services	4,161,301	4,403,331	4,461,045	
Law Enforcement	3,575,013	4,084,259	4,005,479	
Parks	5,659,847	6,268,136	6,515,020	
Fish and Wildlife	10,122,526	10,934,248	11,090,360	
Capital Improvements	8,279,522	22,210,567	4,443,833	
Total	34,239,479	50,146,006	32,836,714	
Salaries and Wages	16,178,722	16,447,186	17,138,562	
Contractual Services	4,601,160	5,241,117	5,929,312	
Commodities	2,825,875	3,120,562	3,290,686	
Capital Outlay	1,373,604	2,155,433	1,409,321	
Subtotal - Operations	24,979,361	26,964,298	27,767,881	
Aid/Other Assistance	980,596	971,141	625,000	
Capital Improvements	8,279,522	22,210,567	4,443,833	
Total	34,239,479	50,146,006	32,836,714	
State General Fund	4,234,696	3,832,112	4,628,771	
Wildlife Fee Fund	15,489,735	17,353,123	17,107,639	
Park Fee Fund	2,384,991	3,166,804	3,734,441	
Boat Fee Fund	865,416	1,128,074	1,046,146	
Water Plan Fund	128,154	184,532	50,000	
Nongame Fund	160,203	111,000	132,324	
W/P Nonrestricted Fund	223,475	225,000	150,000	
Others	1,492,691	963,653	918,560	
Subtotal - Operations	24,979,361	26,964,298	27,767,881	
LWCF - Aid	287,506	300,000	300,000	
EDIF - Other Assistance	40,000	0	0	
Wildlife Fee Fund - Aid	371,615	311,670	225,000	
Federal Grants Fund	6,000	259,471	0	
Private Gifts & Donations	10,000	0	0	
Wildlife Conservation Fund	200,000	50,000	50,000	
Nongame Fund - Aid	58,500	50,000	50,000	
Other	6,975	0	0	
Subtotal - Aid/Other Assist	980,596	971,141	625,000	
Capital Improvements:				
State General Fund	211,434	9,517,349	280,700	
Wildlife Fee Fund	1,109,146	4,416,278	2,346,700	
Park Fee Fund	120,948	371,039	0	
Boat Fee Fund	57,279	636,388	80,600	
Water Plan Fund	1,799,139	482,772	55,833	
Nongame Fund	20,000	135,000	0	
EDIF	104,898	65,657	0	
Federal Funds	1,742,746	2,391,825	30,000	
Road Fund	1,359,187	2,245,102	1,350,000	
Wildlife Conservation Fund	717,014	1,272,236	0	
Other Funds	1,037,731	676,921	300,000	
Subtotal - Capital Imp.	8,279,522	22,210,567	4,443,833	
Total	34,239,479	50,146,006	32,836,714	
Positions	FTE	404.75	402.75	402.75
	Spec Projects	11.0	11.0	3.0

FY 1998 CAPITAL IMPROVEMENTS - GOV REC

PN*	Level	Description	State General Fund	Wildlife Fee Fund	Boating Fee Fund	Water Plan Fund	Roads Fund	Fed Grant Funds	Migratory Waterfowl Fund	TOTAL
										265,000
			115,000	150,000						312,500
1		ADA Renovation								0
2		Major Maintenance	135,700	176,800						0
3		Flood Damage (a)	0				1,350,000			1,350,000
4		Roads Maintenance				0				700,000
5		Repair - Miami SL Dike		700,000						421,200
6		Repair - McPherson SL Dam		421,200						0
7		Repair - Wilson SL Dam		0						54,000
8		St Fishing Lakes Outlet Study		54,000						94,700
9		Fisheries Enhancements		94,700						250,000
10		Shooting Range Development		250,000					300,000	300,000
11		Acquisition of Wellands								0
12		El Dorado Payment (b)	0		80,600					80,600
13		Boating Improvmts at St Parks		500,000						500,000
14		Land Acquisition		0						0
15		Playa Lake Acquisition/Dev						30,000		60,000
16		Cheney SP Match + BOR Funds	30,000			55,833				55,833
		<i>River Recreation (c)</i>								
		TOTAL	280,700	2,346,700	80,600	55,833	1,350,000	30,000	300,000	4,443,833

* priority
 (a) FY 1998 request of \$385,000 shifted to FY 1997 as supplemental
 (b) FY 1997 supplemental of \$8,170,756 recommended
 (c) New initiative for FY 1997. Projected carryover funds from FY 1997.