

MINUTES OF THE HOUSE COMMITTEE ON GOVERNMENTAL ORGANIZATION AND ELECTIONS.

The meeting was called to order by the Chair, Carol Dawson, at 9:00 a.m. on March 17, 1995 in Room 521-S of the Capitol.

All members were present except:     Rep. Herman Dillon, Excused  
  Rep. Dee Yoh, Excused

Committee staff present:     Dennis Hodgins, Legislative Research Department  
  Russell Mills, Legislative Research Department  
  Arden Ensley, Revisor of Statutes  
  Donna Lutjohann, Committee Secretary

Conferees appearing before the committee: John Strickler, Acting Secretary of Wildlife & Parks  
  Dick Koerth, Asst Secretary of Wildlife & Parks  
  Rob Manes, Acting Asst Secretary of Operations, Pratt  
  Darrell Montier, Legislative Liaison, Wildlife & Parks

Others attending: See attached list

Chairman Dawson recognized John Strickler to present the K-GOAL Review of the Department of Wildlife and Parks. Mr. Strickler introduced his staff members that were present. A brief history of Wildlife and Parks was given and the mission of the Department was outlined. He explained that he is not being considered for the position of Secretary of Wildlife and Parks and is only serving as Acting Secretary at the request of the Governor. He noted some of the problems the Department has had in the past and how he has attempted to correct them. See Attachment 1.

The Chairman recognized Dick Koerth. Mr. Koerth explained the organizational chart and how it has been changed with each new secretary in the past. He spoke of the money the federal government expects to be paid to the Wildlife Fee Fund for not spending the money allotted for fisheries on fisheries programs.

Rob Manes was recognized by the Chairman to continue the review. He explained about the Division of Operations and several programs that have been put into place. He made the Committee aware of the Friends of the Park Program and noted that they use volunteer labor to maintain it. He also enlightened the Committee on some of the educational programs in place such as the Hunter Safety Program and the Boating Safety Program.

Darrell Montier was recognized by Chairman Dawson. Mr. Montier explained the way they do business and their strategic plan. In regard to the annual plan, he stated prioritizing projects was being done. Mr. Montier briefly noted the Commission and explained it was a 7 member team began in 1987 and the designated chair is appointed by the governor. He noted that the Rules and Regulations Committee oversees the Commission's activities.

Chairman Dawson brought the Committee's attention to the minutes of March 15, 1995. Rep. Benlon made a motion to approve the minutes. It was seconded by Rep. Horst. The motion carried.

Chairman Dawson adjourned the meeting at 10:30 a.m.

The next meeting is scheduled for Monday, March 20, 1995, at 9:00 a.m. in Room 521-S of the Capitol.



# STATE OF KANSAS



---

## DEPARTMENT OF WILDLIFE & PARKS

### OFFICE OF THE SECRETARY

900 SW Jackson St., Suite 502 / Topeka, Kansas 66612 - 1233  
(913) 296-2281 / FAX (913) 296-6953

### Overview

Kansas Department of Wildlife and Parks  
Presented to the House Governmental  
Organization Committee  
March 17, 1995

The Department of Wildlife and Parks is a cabinet level agency administered by a Secretary appointed by the Governor and confirmed by the Senate. A seven member commission, appointed by the Governor, performs an advisory role to the Secretary and is provided with authority for Department regulations.

The Department of Wildlife and Parks was created pursuant to Executive Reorganization Order No. (ERO) 22 issued by Governor Mike Hayden on February 10, 1987. The ERO merged the Kansas Parks and Resources Authority with the Kansas Fish and Game Commission effective July 1, 1987. The 1987 Session of the Kansas Legislature approved the ERO as submitted by the Governor. The state statutes that pertain to organization and powers of the Department are contained in KSA 1992 32-801 et. seq.

The 1989 Session of the Legislature approved House Bill No. 2005 which contained a major recodification of the State laws pertaining to the Department. The recodification bill consolidated state laws concerning the duties and functions of the Department. In addition, the bill included a standardization of terms and definitions, defined the authority of the Secretary and Department, established qualifications for the Secretary and Assistant Secretaries. The provisions of this bill are contained within Chapter 32 of the Kansas Statutes Annotated.

HOUSE GOVERNMENTAL  
ORGANIZATION AND ELECTIONS  
March 17, 1995  
Attachment 1-1

- The mission of the Department of Wildlife and Parks is to:
- 1) Preserve and enhance Kansas' natural heritage, its wildlife and its habitats to ensure future generations the benefits of the State's diverse, living resources.
  - 2) To provide the public with opportunities for use and appreciation of the natural resources of Kansas, consistent with the conservation of those resources, and
  - 3) To inform the public of the status of the natural resources of Kansas to promote understanding and gain assistance in achieving this mission.

Throughout our history, as a nation and state, there has been a firm belief in the value and importance of nature, wildness and the outdoors. The Kansas Department of Wildlife and Parks works to serve and foster those deeply held beliefs.

The Department is required by law to maintain an administrative facility in Topeka and an operations facility in Pratt. The Topeka office is the location of the Executive Services Division which includes the Office of the Secretary, with associated staff, and engineering, budget, planning, and federal grants functions. The Pratt facility is the location for the accounting, personnel, licensing and permits, and purchasing functions and the division directors of Administrative Services, Law Enforcement, Parks and Public Lands, and Fish and Wildlife. The Department maintains five regional offices located in Hays, Topeka, Dodge City, Valley Center, and Chanute in addition to numerous outdoor recreation and natural resource facilities throughout the state.

A copy of the Department's current organizational chart is attached to this report. The activities of the Department are accomplished through that organizational structure. In addition, also attached are previous organization charts which provide a history of how the Department evolved. A further description of that structure and responsibilities of the various Divisions and Sections is as follows:

### Administrative Services

This Division provides administrative support and technical services to the Department which address objectives of the various programs in the strategic plan. Administrative support and technical services are provided by the categories (functions) and the areas of responsibility as presented below:

#### Business Management & Fiscal

- Provide general accounting, payroll, inventory and auditing systems.
- Coordinate agency purchasing, central warehouse, motor pool and contractual agreements to assure cost effective management.
- Analyze and prepare fiscal/manpower summaries, reports and data gatherings.
- Maintain and update department cost accounting system.
- Provide for management of regional offices.

#### License and Review

- Provide distribution, development and collection for licenses and permits (including boat registrations).
- Provide in-house printing, duplication and mail service.

#### Education

- Develop and maintain educational programs designed to educate and inform our publics on topics relating to our wild and recreational resources.
- Provide and operate public educational facilities at Pratt, Milford, Kansas City and Wichita.
- Provide and coordinate required public training for Hunter Education, Furharvester Education and Boater Education.

#### Data Processing

- Provide data processing services to all programs.
- Maintain record file on all mandated and management systems.

- Maintain planning/budgeting and cost accounting systems.
- Provide data management system for data processing of fisheries and game resource management.

### Executive Services

This Division consists of the Office of the Secretary of Wildlife and Parks and those functions supervised directly by the Assistant Secretaries for Administration and Operations and the Chief of Staff. These functions include Engineering, Personnel, Budget, Policy development, Planning, Environmental Services, and Public Information.

The Assistant Secretary for Administration is located in Topeka and is responsible for the administrative support services provided to the rest of the Department. These services include engineering, personnel, budget, accounting, data processing, licensing, education, and regional office management. The last five of these services are described in the program narrative for the Administrative Services Division.

The engineering, personnel, and budget functions are included in the Executive Services Division. The engineering section provides support to the remainder of the Department regarding capital improvement projects and for maintaining and upgrading facilities. The personnel section is responsible for maintaining personnel records for all employees of the Department and for providing assistance in recruitment, training and other personnel related matters. The budget section is responsible for preparation of the annual budget request, monitoring of the approved budget, providing assistance to other units of the Department in budget preparation, and performance of internal audits of agency functions.

The Chief of Staff is located in Topeka and is responsible for the planning and policy functions of the Department of Wildlife and Parks. It should be noted that this position is currently vacant and any future use of this position will be decided by the permanent Secretary of Wildlife and Parks. In addition, the legal

support for the Department is attached to the Chief of Staff. The planning and policy section includes communications and natural resources coordination for the Office of the Secretary. The Department's planning system involves several key components:

- Strategic Planning
  - Establish Programs
  - Establish Goals and Objectives
  - Identify Problems and Strategies
  
- Operational Planning
  - Projects
  - Priorities
  - Annual Budget Preparation
  
- Cost Accounting System
  - Location, Activity, Program and Project
  - Reconciliation with State Accounting System

The Assistant Secretary for Operations is located in Pratt and is responsible for the Divisions of Parks and Public Lands, Law Enforcement, and Fish and Wildlife. In addition, the functions of public information and environmental services are directly supervised by the Assistant Secretary for Operations.

The Environmental Service Section provides research and monitoring efforts on the State's natural resources. It provides professional fish and wildlife input to the many private, local, state, and federally funded, assisted, and permitted development projects initiated in Kansas each year. The agency must also provide input to regional and state-wide development plans and land-use programs having direct and indirect impacts on wildlife. Also covered is the administration of the agency's permitting authority under regulations pursuant to the Kansas Nongame and Endangered Species Conservation Act, conduct of stream research, and coordination of fish and bird kill investigations.

The Public Information Section transmits information to the public about outdoor recreation in Kansas and the Department's role

in administering and enhancing that recreation. The Section uses a variety of informational tools and strategies to achieve its purpose, such as:

- Annual publication of hunting, fishing, and public lands regulations brochures.
- Bimonthly publication of KANSAS WILDLIFE AND PARKS magazine.
- Weekly production of a news release package mailed to all print and broadcast media in Kansas, selected outdoor and travel writers, natural resource organizations, and subscribing media representatives who reside outside the state.
- Production of informational brochures on specific recreational pursuits and public use areas.
- Production of video programming for broadcaster use.
- Production of finished video programming for classroom and public program use.
- Production of monthly, internal "Employee Update" newsletter.
- Coordination of Department participation in sport/promotion shows, both in Kansas and outside the state.
- Production of slide series for use by Department staff.
- Photo/video support services for Department personnel.
- Informational campaign planning in support of all Department divisions.
- Telephone and written response to individual information requests.

Functions associated with Commission affairs are administered through Executive Services. This includes:

- Development of meeting agendas and preparation of meeting minutes.
- Meeting site and scheduling arrangements.
- Distribution of materials to and from Commissioners.
- Assisting with Commission correspondence and conduct of business.



Public Law 88-578 established the Land and Water Conservation Fund as a 50-50 matching grant program for land acquisition and development of outdoor recreation. The majority of this grant is made available to local units of government in Kansas. It is administered through Executive Services.

#### Law Enforcement Division

This division is responsible for the protection of our natural resources and the safety of the public who use these resources. The protection of these resources and the safety of the public who use these resources are controlled by laws and regulations. It is the responsibility of the Law Enforcement Division to administer these laws and regulations. Functions carried out in the Law Enforcement Division include:

- Enforcement of laws and regulations pertaining to fishing, hunting, trapping, boating, public safety and environmental concerns such as pollution.
- Assist USFWS in the enforcement of the Lacey Act, Bald Eagle Act and Migratory Waterfowl Act.
- Assist other State and Federal Law Enforcement Agencies on concurrent investigations.
- Emergency and rescue.
- Maintain a toll-free hotline for reporting of Wildlife and Parks violations by concerned citizens.
- Provide mandatory law enforcement training to conservation officers and other agency employees that have law enforcement authority.
- Coordinate state boating enforcement programs with the U.S. Coast Guard.
- Assist the Fisheries and Wildlife Division with surveys, wildlife depredation complaints, pollution investigations and other wildlife management programs.
- Assist the education and public affairs division with public awareness of resource.
- Management programs, hunter education, furharvester education and boating education.
- Detect and investigate illegal commercialization of wildlife.

### Parks and Public Lands Division

This division is responsible for management and services associated with Kansas' wildlife areas, state parks and state fishing lakes. The division is involved in planning, development, operation, maintenance, public service and public educational programming on more than 125 separate properties in 23 units. In addition, the Division provides law enforcement on state parks.

Resources managed by the division include:

- 37 state fishing lakes, entailing approximately 3,257 water acres and 21,517 land acres.
- 25 federal areas (wildlife areas), entailing approximately 35,300 water acres and 170,370 land acres, and an additional 3,720 acres of state-owned land associated with the federal areas.
- 24 state parks, entailing approximately 29,535 acres.
- 9 river access areas.
- 45 other areas and facilities, primarily for wildlife purposes, entailing approximately 24,500 water acres and 59,000 land acres.

### Fisheries and Wildlife Division

This division provides for the orderly compilation and analyses of fish and wildlife populations, harvest and habitat status data, and management of both game and nongame wildlife including those species listed as threatened or endangered.

Activities of this Division include:

- Increase the quantity and quality of fish and wildlife habitats on private and public lands.
- Increase coordination with governmental agencies (federal, state, and local) and private concerns which influence and use fish and wildlife resources.
- Improve sportsman-landowner relationships.
- Increase fish and wildlife information and education efforts to encourage preservation and enhancement of habitats.
- Establish regulations to maximize use opportunity without jeopardizing the fish and wildlife resource base.
- Increase fish and wildlife use opportunities on existing public areas.

- Conduct research to provide for baseline fish and wildlife management data.
- Manage game and nongame wildlife including threatened and/or endangered species.
- Monitor and manage populations of re-established fish and wildlife species.
- Improve and maintain the fish hatchery system to ensure an adequate supply of desirable species for stocking in state waters.

#### Kansas Wildlife and Parks Commission

K.S.A. 32-805 establishes a seven member Wildlife and Parks Commission appointed by the Governor who also designates the Chairperson of the Commission. Commissioners are appointed for a four year term. The statute that created the Commission provides that the Commission has final authority to approve, amend and reject regulations of the Department other than those regulations related to personnel. The Commission is also charged with serving in an advisory capacity to the Governor and the Secretary in the formation of policies and plans relating to the Department.

- Meetings
- Rules and Regulations
- Planning
- Budget
- Department Programs
- Legislation
- Public Forums and Contacts
- Special Issues

Funding sources for the department are varied, but are primarily from direct or indirect user fees. A listing of the various funds include:

#### WILDLIFE FEE FUND

The major sources of receipts to the Wildlife Fee Fund are from the sale of hunting, fishing and furharvester licenses and

from various permits. The category of big game permits includes permits to hunt deer, elk, antelope, and turkey. This fund is interest bearing. Expenditures from this fund are to be used for fish and wildlife purposes.

#### PARKS FEE FUND

The Parks Fee Fund is the depository for moneys received from state park permit fees, tolls, rentals, and charges derived from the use, lease or operation of state parks. Expenditures from this fund are to be used in the administration and performance of park management and operation.

#### BOATING FEE FUND

The Boating Fee Fund is composed of boat registration fees. The fund is to be used for boating related purposes.

#### DEVELOPMENT AND PROMOTION FUND

The Development and Promotion Fund is used for deposit of receipts from the sale of promotional items such as belt buckles and hats and for the deposit of admission fees received from special events on state facilities sponsored by the Department.

#### WILDLIFE CONSERVATION FUND

The Wildlife Conservation Fund is utilized to deposit receipts received from the sale of lifetime hunting and fishing licenses. This fund is interest bearing.

#### STATE GENERAL FUND

Monies are appropriated annually to the Department primarily for operation, maintenance and capital improvements on state parks.

#### FISH AND WILDLIFE RESTITUTION FUND

This fund is utilized to deposit funds received from persons or corporations held liable for destroying fish or wildlife through negligent means. This could include illegal hunting or fishing; and chemical degradation by means of accidental spills. Amounts credited to this fund would be utilized to purchase fish or wildlife to replace that destroyed.

#### NONGAME WILDLIFE IMPROVEMENT FUND

The Nongame Wildlife Improvement Fund is used to preserve, protect, perpetuate, and enhance nongame wildlife within the State. Receipts to the fund are generated by donations from Kansas taxpayers on their individual income tax forms submitted each year.

#### MIGRATORY WATERFOWL PROPAGATION AND PROTECTION FUND

The Migratory Waterfowl Propagation and Protection Fund is for the deposit of receipts from the sale of state migratory waterfowl habitat stamps. It is to be used for the purposes of protecting and propagating migratory waterfowl, including the acquisition, by purchase or lease, of migratory waterfowl habitats in the State, and for the purpose of development, restoration, maintenance or preservation of waterfowl habitats.

#### FEDERALLY LICENSED WILDLIFE AREAS FUND

The receipts to this fund are generated by agricultural leases set up with local farmers at each of the federal reservoirs on which the Department has leased lands. The Federal agencies require that receipts received from such leases be utilized on the reservoir from which the receipts were generated.

#### DEPARTMENT OF WILDLIFE AND PARKS - PRIVATE GIFTS AND DONATIONS FUND

State Law (K.S.A. 1992 Supp. 32-994) provides that all funds received as bequests, donations or gifts by the Department shall be credited to this fund and used for the purposes of the Department. The fund is used primarily to support the Wildtrust Program operated by the Department. The fund is interest bearing.

The following federal programs contribute funding to the Department:

Pittman-Robertson (P.R.) Program - Revenues for this fund are generated through an excise tax on hunting type equipment. It is then prorated back to the states for use in wildlife restoration and management projects. Approved projects are eligible for a 75% - 25% cost share. The state pays for the project and 75% of the cost is reimbursed to the state through the P.R. program.

Dingel-Johnson (DJ) Program - Revenues for this fund are generated through an excise tax on fishing (and certain boating) type equipment. It is then prorated back to the states for use in sport fish restoration and management projects. Procedures for receiving the funds are the same as for the P.R. program.

U.S. Coast Guard Boating Funds - Funds are made available to the states on a 50% - 50% matching basis for boating related projects.

Land and Water Conservation Fund  
Cheyenne Bottoms Renovation  
Federal Grants Fund  
Bureau of Reclamation Flood Aid

Additional state funding sources include:

Economic Development and Initiatives Fund  
Water Plan Fund  
Road Development  
State Budget Stabilization Fund

	FY 1994 Actual	FY 1995 Gov Rec	FY 1996 Gov Rec
Administrative Services	2,695,372	2,719,410	2,676,176
Grants-in-Aid	0	300,000	300,000
Executive Services	3,050,417	2,900,588	2,906,915
Law Enforcement	3,863,182	3,600,131	3,994,984
Parks and Public Lands	8,338,806	8,844,721	9,203,684
Fish and Wildlife	4,886,224	6,200,828	5,738,413
Capital Improvements	6,733,469	13,792,721	4,983,800
<b>Total</b>	<b>29,567,470</b>	<b>38,358,399</b>	<b>29,803,972</b>

Salaries and Wages	15,513,797	15,895,261	16,504,864
Contractual Services	3,662,139	3,995,750	4,306,354
Commodities	2,066,914	2,138,104	2,218,189
Capital Outlay	1,399,266	1,420,560	1,175,765
<b>Subtotal - Operations</b>	<b>22,642,116</b>	<b>23,449,675</b>	<b>24,205,172</b>
Aid/Other Assistance	191,885	1,116,003	615,000
Capital Improvements	6,733,469	13,792,721	4,983,800
<b>Total</b>	<b>29,567,470</b>	<b>38,358,399</b>	<b>29,803,972</b>

State General Fund	3,709,694	3,670,816	4,174,216
Wildlife Fee Fund	14,317,155	15,636,250	15,677,713
Park Fee Fund	2,749,269	2,507,067	2,590,818
Boat Fee Fund	759,230	605,104	891,260
Water Plan Fund	1,400	236,200	50,000
Nongame Fund	149,649	101,000	101,000
Others	955,719	693,238	720,165
<b>Subtotal - Operations</b>	<b>22,642,116</b>	<b>23,449,675</b>	<b>24,205,172</b>
LWCF - Aid	0	300,000	300,000
EDIF - Other Assistance	0	50,000	0
Wildlife Fee Fund - Aid	89,540	514,903	265,000
Federal Grants Fund	29,000	0	0
Private Gifts & Donations	14,000	0	0
State General Fund	0	201,100	0
Nongame Fund - Aid	59,345	50,000	50,000
Other			
<b>Subtotal - Aid/Other Assist</b>	<b>191,885</b>	<b>1,116,003</b>	<b>615,000</b>
Capital Improvements:			
State General Fund	696,512	70,808	650,000
Wildlife Fee Fund	857,897	2,553,214	367,700
Park Fee Fund	56,538	454,872	0
Boat Fee Fund	31,792	390,146	216,100
Water Plan Fund	1,868,902	1,314,425	1,000,000
Nongame Fund	0	105,000	55,000
EDIF	483,497	1,569,337	0
Cheyenne Bottoms - Federal	1,937,676	1,605,670	1,000,000
Road Fund	518,628	3,049,336	1,350,000
Other Funds	282,027	2,679,913	345,000
<b>Subtotal - Capital Imp.</b>	<b>6,733,469</b>	<b>13,792,721</b>	<b>4,983,800</b>
<b>Total</b>	<b>29,567,470</b>	<b>38,358,399</b>	<b>29,803,972</b>

Positions 406 417 417

1-13

SUMMARY OF FINANCIAL OBLIGATIONS BY KANSAS DEPARTMENT OF WILDLIFE AND PARKS (KDWP) TO COMPLY WITH FEDERAL AID AUDIT ISSUES.

15-Mar-95

AMOUNT OF DIVERSION FOR FY 1989 – FY 1992 HAS BEEN FINALIZED AT \$1,900,109. TO COMPLY WITH USFWS REQUIREMENTS, THIS AMOUNT MUST BE TRANSFERRED FROM ANOTHER SOURCE TO THE WILDLIFE FEE FUND OF THE KDWP.

FY 1995	802,736	Transfer made from State General Fund to Wildlife Fee Fund
FY 1996	432,710	GBR recommendation to transfer from State General Fund to Wildlife Fee Fund
	664,663	Balance to be transferred to Wildlife Fee Fund
	1,900,109	Total amount of Diversion for FY 1989 – FY 1992

THE KDWP MADE INADEQUATE EXPENDITURES TO COMPLY WITH BASE FISHERIES EXPENDITURES FOR FY 1986 – 1992. THE KDWP MUST EXPEND \$3,541,526 FOR FISHERIES PROGRAM DURING A THREE YEAR PERIOD.

FY 1995	1,180,509	Amount authorized by 1994 Legislature from Wildlife fee fund for fisheries programs. First year payment.
FY 1996	1,187,650	Amount included in GBR for second year payment.
FY 1997	1,173,367	Third year payment to resolve issue.
	3,541,526	Total for inadequate base fisheries expenditures.

THE KDWP RECEIVED \$845,099 IN FEDERAL SPORT FISHERIES AID FOR PROJECTS AT STATE PARKS. THOSE PROJECTS WERE NOT PART OF THE APPROVED OPERATIONS PLAN FOR FY 1992 AND THEREFORE WERE INAPPROPRIATE TO RECEIVE FEDERAL AID REIMBURSEMENT. THE KDWP MUST REIMBURSE THE FEDERAL AID PROGRAM IN THE AMOUNT OF \$845,099.

FY 1995	845,099	The 1994 Legislature authorized expenditures of \$300,000 for State Fishing Lake Renovations and \$750,000 for Dam Maintenance and Repair from the Wildlife Fee Fund to compensate for the inappropriate federal aid reimbursement.
---------	---------	---

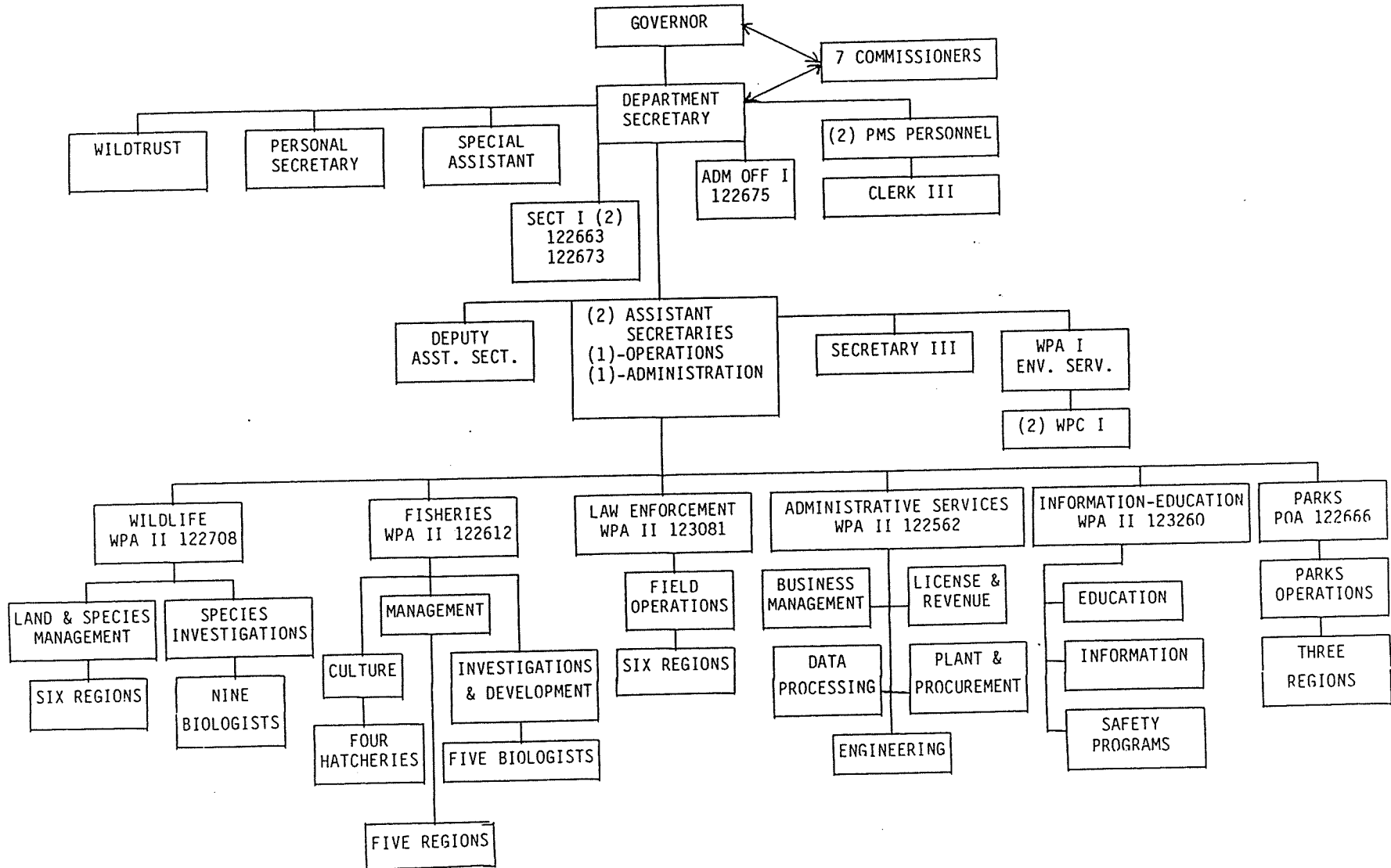
THE ABOVE ITEMS ARE THE FISCAL COMPONENTS REQUIRED BY THE USFWS FOR KDWP TO MAINTAIN ELIGIBILITY FOR FEDERAL AID. IT SHOULD BE NOTED THAT ALL OF THE AUTHORIZED EXPENDITURES ARE TO BE MADE BY THE KDWP. IN ADDITION, ANY TRANSFER OF FUNDS ARE WITHIN ACCOUNTS OF THE STATE TREASURY. ALL OF THE FUNDS WILL BE SPEND IN KANSAS FOR PROJECTS WHICH BENEFIT THE PUBLIC.

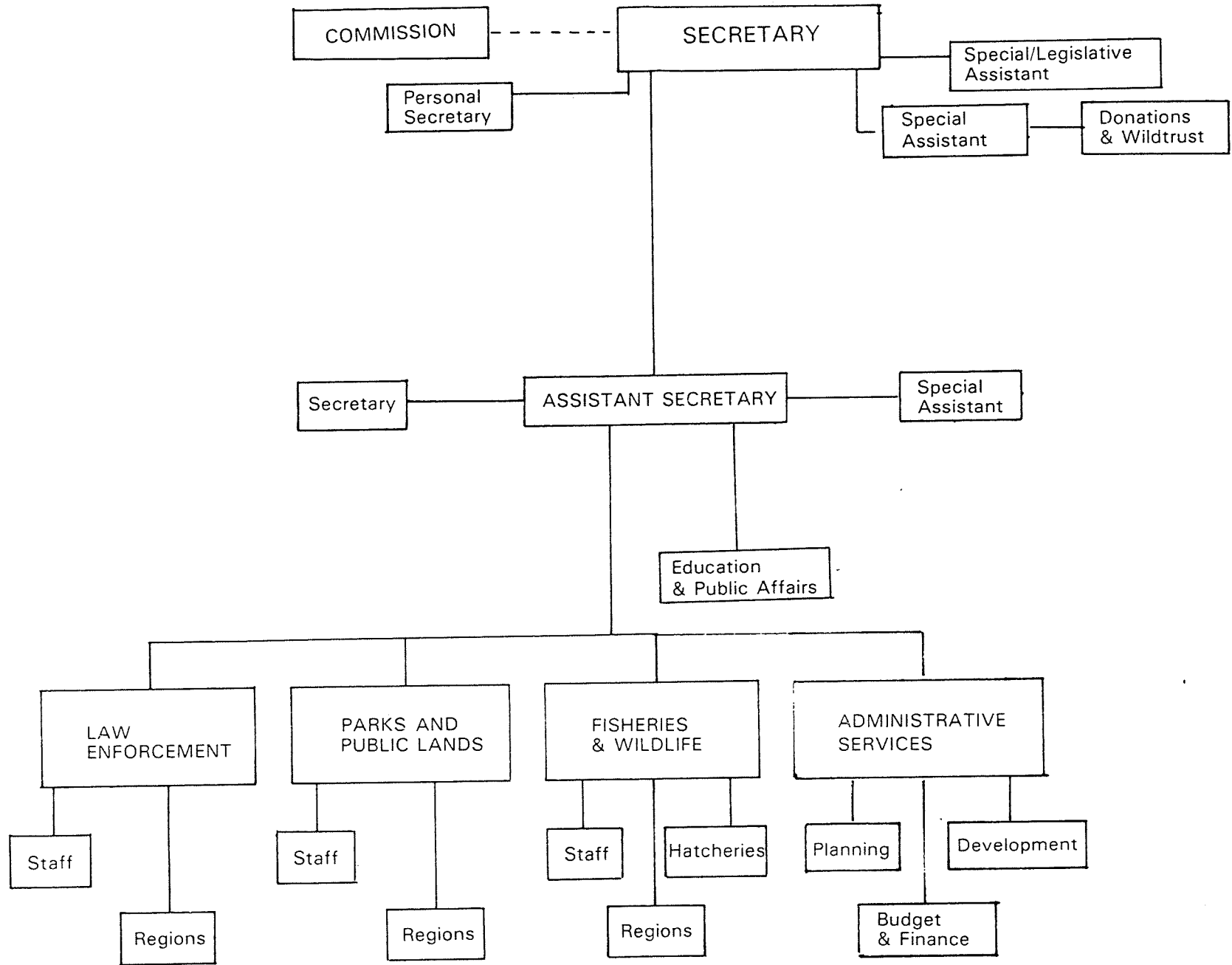
STORE1\auditsum



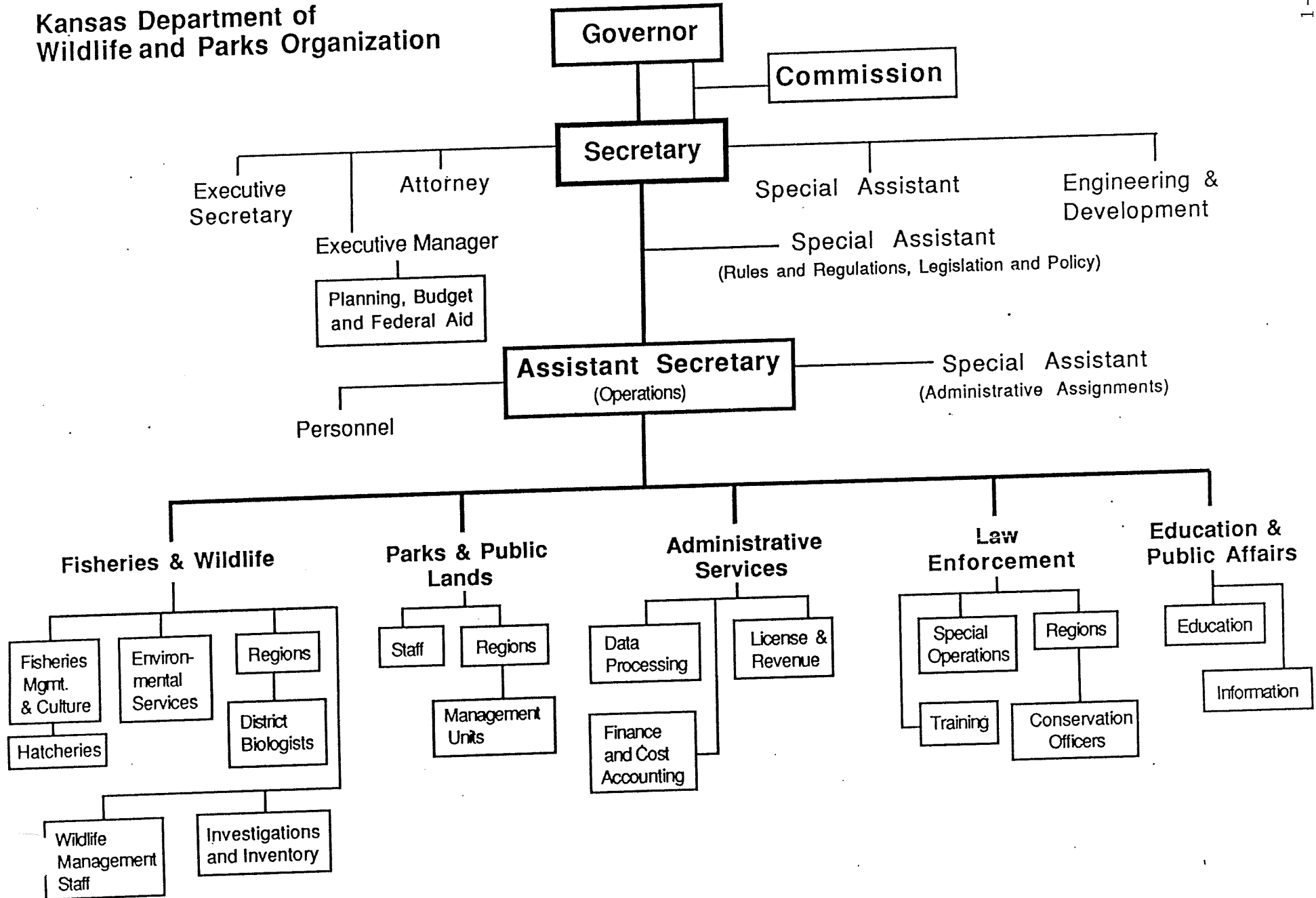
KANSAS DEPARTMENT OF WILDLIFE & PARKS

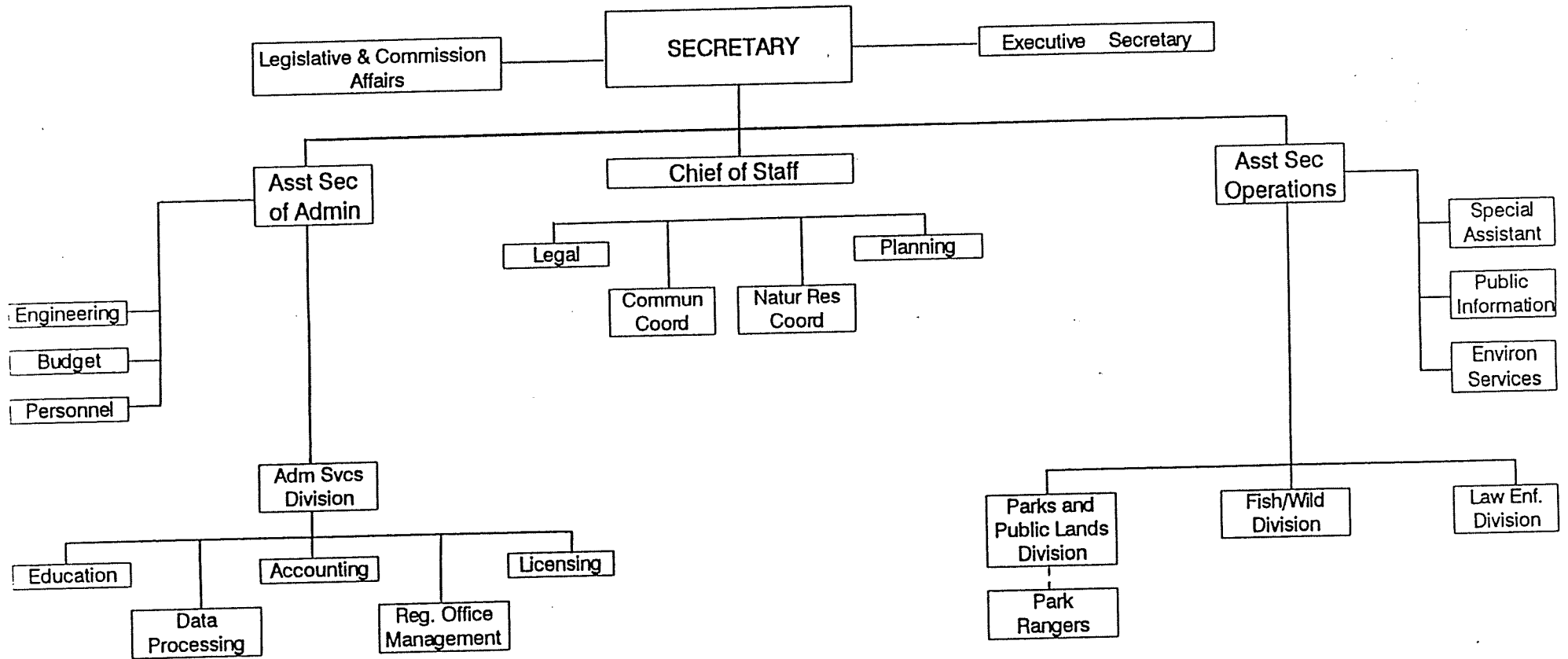
CURRENT STATUS-PENDING FURTHER AGENCY REVIEW





# Kansas Department of Wildlife and Parks Organization





# DEPARTMENT OF WILDLIFE AND PARKS ORGANIZATION CHART

