

Approved 4-29-92
Date

MINUTES OF THE Special COMMITTEE ON Apportionment

The meeting was called to order by Representative Joan Adam at
Chairperson

5:15 a.m./p.m. on Wednesday, March 25, 1992 in room 514-S of the Capitol.

All members were present except:

Committee staff present:

Mary Galligan, Legislative Research Department
Raney Gilliland, Legislative Research Department
Bob Coldsnow, Revisor of Statutes Office
Ellie Luthye, Committee Secretary

Conferees appearing before the committee:

The Special Committee on Apportionment met on Wednesday, March 25th in Room 514-S. Representative Joan Adam, Chair, called the meeting to order at 5:15 p.m.

The Chair asked for an update on the Senate map from Senator Vidricksen. He stated they were still having some problems with the Sedgwick area but hopefully a map would be presented soon.

Representative Adam stated the offer the Republicans had made on the 24th of trading Riley/Geary for Douglas and she proposed a counter offer which was Reno in the 4th and Douglas in the 3rd. She also stated the Republican map had showed Franklin in the 3rd and she suggested, as part of the compromise offer, to hold that piece out and discuss it in terms of Franklin and Miami.

Representative Snowbarger and Senator Bond agreed to this, stating the reason they had put Franklin and Miami where they were was because Franklin gave better deviation in the 3rd and with Miami the community of interest was better.

Senator Bond stated there were two areas of concern, one being that more population needed to be added to the 1st district. If you put Riley and Geary counties in the 2nd and left Reno in the 4th then there were two choices on adding the population to the first - loop down to SE Kansas or make the 1st District go clear across the top of the state all the way to the Missouri border.

Representative Snowbarger stated he needed a better understanding of what SE Kansas consisted of - whether it had 6, 9 or 12 counties.

Representative Reardon stated he had difficulty even when talking with the people of SE Kansas because everyone has a different answer but all agree that Labette, Neosho, Allen, Bourbon, Crawford and Cherokee are really the core of SE Kansas.

Representative Adam stated the map the Democrats had presented spoke to one possibility of how SE Kansas could be divided in a sensitive way with the community of interest.

Representative Snowbarger stated he was also looking at the maps in terms of votes - that there were many votes in SE Kansas and if they decided to band together against a wrap map there would be a significant number of votes.

Representative Adam passed out a map of North Carolina Congressional districts which showed another scenario of compactness. (Attachment 1)

Representative Snowbarger stated he didn't understand the rationale of maps of other states being passed out because the committee did not know why the maps were drawn the way they were. He further stated that the committee did not know if those maps could be drawn more compactly but that there were maps on the table before them that show you can draw them more compactly in the state of Kansas and sometimes with a lower deviation.

CONTINUATION SHEET

MINUTES OF THE Special COMMITTEE ON Apportionment,
room 514-S, Statehouse, at 5:15 a.m./~~p.m.~~ on Wednesday, March 25, 1992

Representative Adam stated that probably what was not clear was the court opinion on wrap maps and she would get more information about this before the next meeting.

Representative Snowbarger stated the offer is still on the table, Douglas in the 3rd and Riley/Geary in the 2nd and the counter offer of Douglas in the 3rd and Reno in the 4th.

Representative Adam suggested each side come back to the table with maps which would have different versions of the Riley/Geary area.

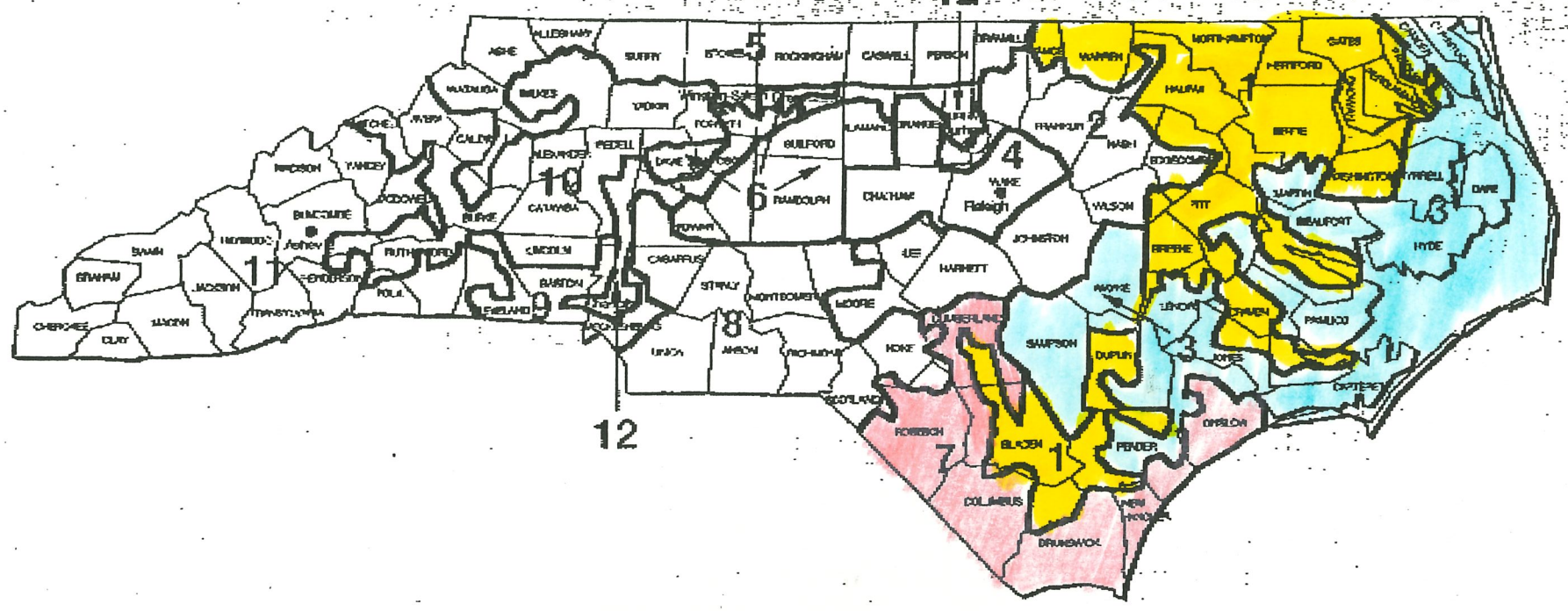
Senator Vidricksen stated he was ready to take 4-5 maps to the Senate committee and make a decision and introduce a map. He further stated if the other side didn't like it they could veto it but at least it would make it to court.

Representative Snowbarger stated if the Senate introduced a map, that as the minority in the House, he would be shut out of the whole process. He suggested following the suggestion of the Chair that both sides return on the 27th with maps that reflect Reno in the 4th and Douglas in the 3rd.

The next meeting of the Task Force will be on Friday, the 27th, time and location to be announced. The Chair adjourned the meeting at 6:05 p.m.

New North Carolina Districts

12



11

West —
 Asheville;
 Hendersonville



Taylor



Stevens

A former minority leader in the state House and state Senate, GOP Rep. Taylor got a dose of redistricting partisanship from his old Democratic adversaries in Raleigh. The new congressional map weakens

12

The I-85 Corridor —
 Parts of Durham;
 Greensboro; Charlotte

The new 12th, the second black-majority district created in re-districting, is an aesthetic and political affront to North Carolina Republicans, who had expected the new district to be a GOP seat. In the initial House map passed by the legislature in 1991, the 12th took in predominantly Republican areas in the west-central part of the state. Prospective GOP candidates began lining up; one, an aide to Martin, resigned his position and raised almost \$70,000.

But when the Justice Department nixed the initial map, insisting on one with a second majority-minority district,