

Approved Gary Blumenthal

Date FEB 11 1991

MINUTES OF THE House COMMITTEE ON Governmental Organization

The meeting was called to order by Representative Gary Blumenthal at
Chairperson

11:30 a.m./~~p.m.~~ on Tuesday, February 5, 1991 in room _____ of the Capitol.

All members were present except:

Joan Hamilton, Barbara Lawrence,
Frank Weimer, excused

Committee staff present:

Carolyn Rampey, Research Dept.
Julian Efird, Research Dept.
Nita Shively, Committee Secretary

Conferees appearing before the committee:

Deaune Maddock, Information Resource Manager
Tom Day, Director-Administrative Services Division
John McKenzie, Manager, Conservation Program

A joint meeting of the House and Senate committees consisted of a tour of the Kansas Corporation Commission; departure from the Statehouse was at 11:25 a.m.

Upon arrival a lunch was provided; while dining a demonstration of the MacIntosh computer system was given by Deaune Maddock. A sample of an oil overcharge expenditure summary along with graphs was provided, (Attachment 1).

John McKenzie gave a brief talk describing the energy-efficient features of the new building. An informative booklet, which includes maps and graphs, was provided, (Attachment 2). Tom Day also spoke regarding the decision to construct a new building rather than remodel an existing one.

Following a tour of the facility, committee members returned to the Statehouse at 12:55 p.m.

Kansas

Corporation

Commission



**1500 S.W. Arrowhead Road
Topeka, Kansas 66604
(913) 271-3100**

*g.O. 2-5-91
attachment 1-1*

Welcome

The commissioners and staff of the Kansas Corporation Commission welcome you to our new home.

The Commission is committed to meeting the needs of the citizens of Kansas and it is our intention to continue that mission at this location. This building has several features, such as larger and more easily accessible hearing rooms, which we hope will increase public participation.

In addition, this building was designed with an eye towards energy conservation. As you tour the building take notice of the special lighting and cooling features which have been installed. These features will save approximately \$6,000 in energy costs each year.

All fluorescent light fixtures in the building are equipped with electronic ballasts. These ballasts are more energy efficient than standard magnetic ballasts in several respects. They are of lower wattage, which require less energy to operate, emit less heat, and reduce cooling costs. Ballasts also will reduce "flicker" associated with fluorescent lights.

All bathrooms, conference rooms, and many offices are equipped with motion detectors. These devices turn the lights on when the room is occupied and turn them off when the room is unoccupied. While these features are not new to the marketplace, many are new to Topeka.

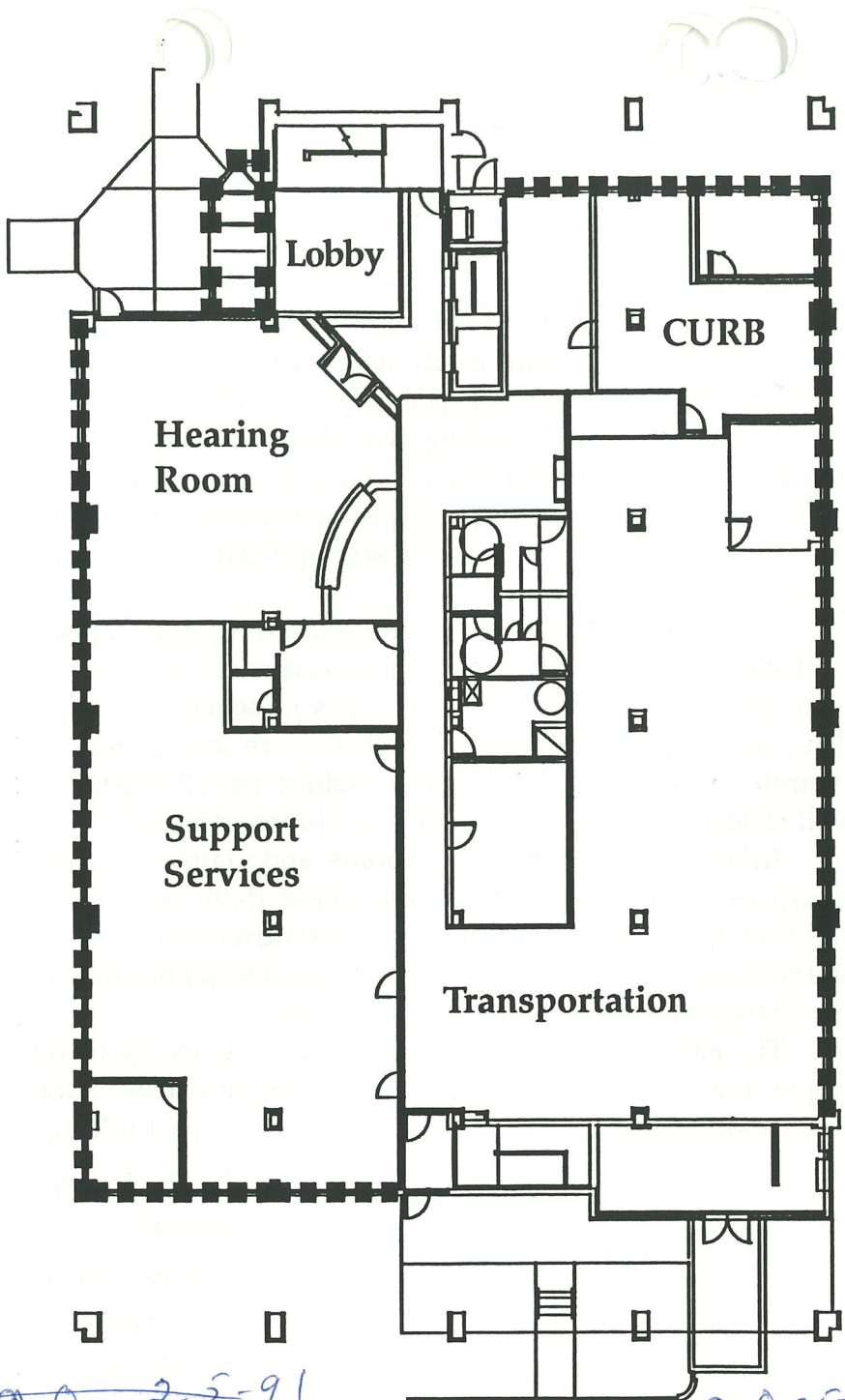
The KCC thanks you for visiting our new location and hopes you have a chance to see the energy conservation features the developer chose to incorporate into the building.

Keith R. Henley
Chairman

Rich Kowalewski
Commissioner

Jack Shriver
Commissioner

90 2-5-91
Attachment 1-2



g. O. 2-5-91
Attachment 1-3



g. O. 2-5-91
Attachment 1-3

First Floor

Transportation Division

The Transportation Division assists the Commission in the regulation of approximately 20,000 motor carriers, railroads, and liquid pipelines. This Division is responsible for implementing and administering regulations and policies adopted by the Commission for the regulation of transportation within the state.

Support Services

Support Services provide the Commission with daily operational support including docket filings, photocopying, graphics services, and maintaining the records of previous Commission orders.

Citizens' Utility Ratepayers Board (CURB)

CURB represents the interests of residential and small commercial ratepayers in public utility issues. CURB is a state agency separate from the KCC.

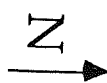
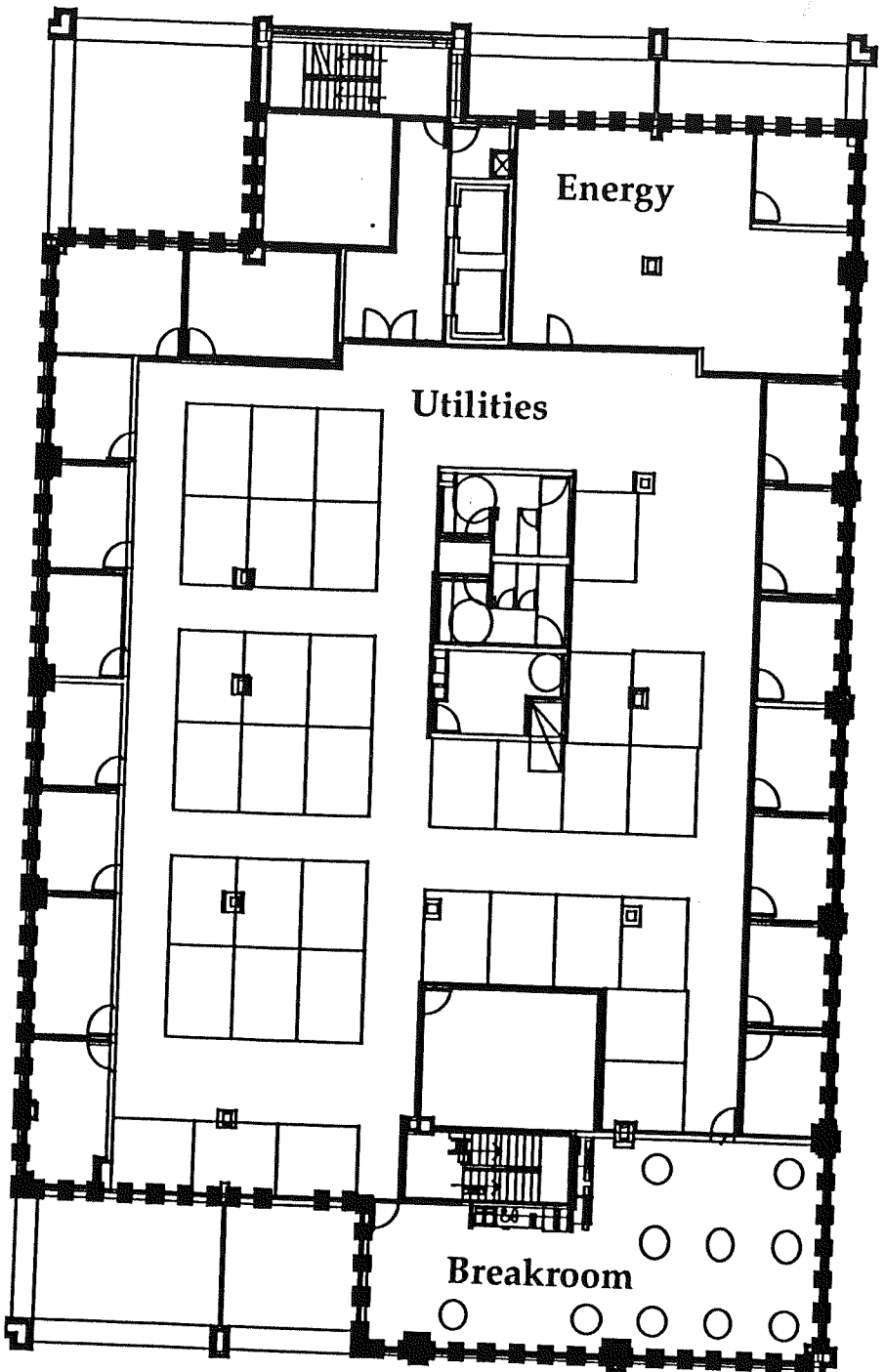
Energy Features

The Transportation Division area is equipped with dimmable electronic ballasts. These ballasts dim the lights according to the sunlight coming through the window. This system saves energy and maintains a constant level of illumination.

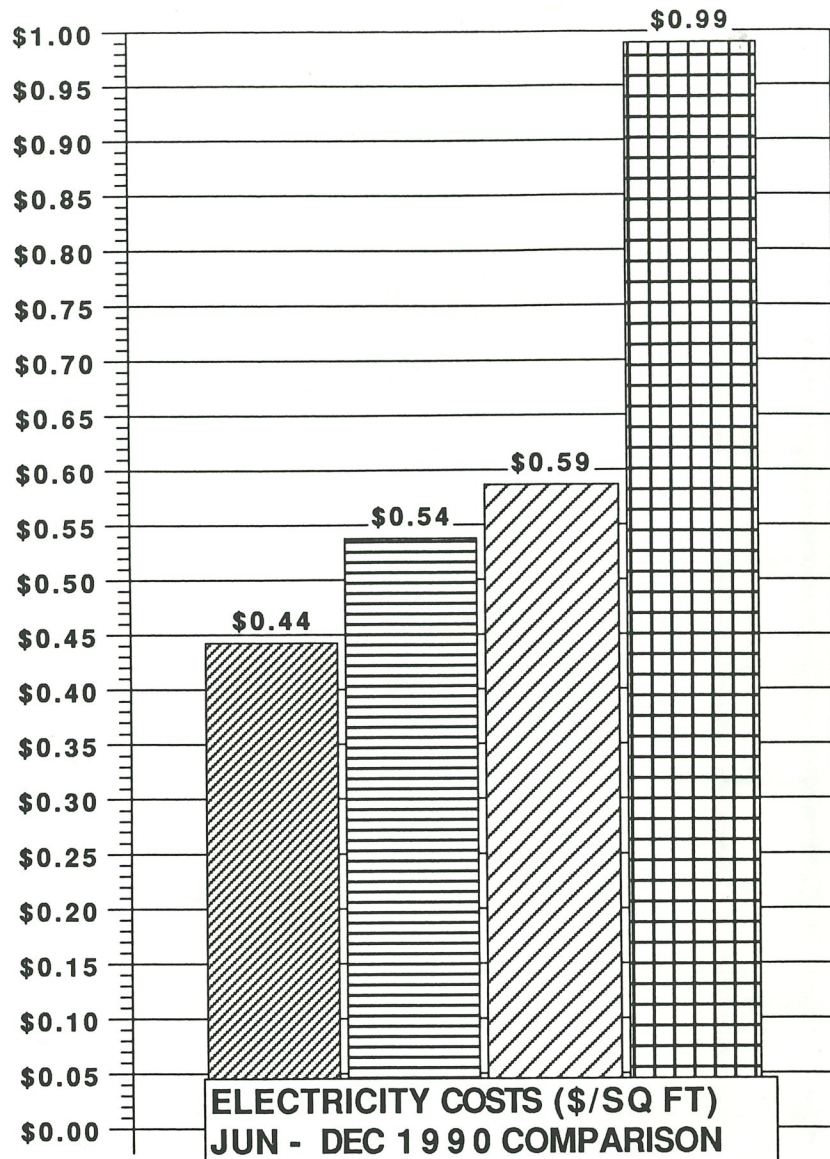
Landscaping around the building was designed by selecting plants and trees that require minimum moisture while maintaining attractive and functional landscaping.

90 2-5-91

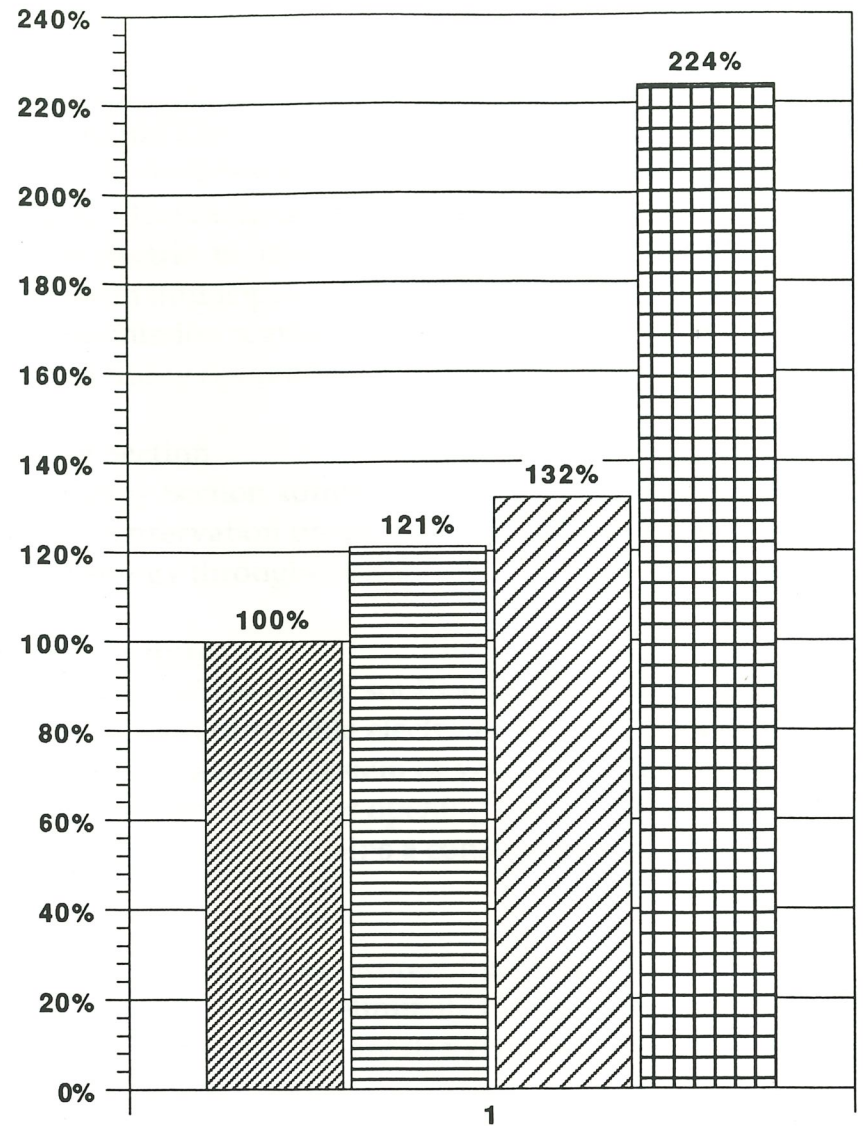
attachment 1-4



g.0 2-5-91
Attachment 1-5



▨ KCC BLDG ▩ NEIGHBOR BLDG 2
 ▤ NEIGHBOR BLDG 1 ▧ LANDON SOB



▨ KCC BLDG ▩ NEIGHBOR BLDG 2
 ▤ NEIGHBOR BLDG 1 ▧ LANDON SOB

g d 2-5-91
 attachment 1-6

Second Floor

Utilities Division

The Utilities Division is responsible for administering the laws and regulations applicable to over 220 jurisdictional utilities. The Commission has jurisdiction over investor owned electric, natural gas, telephone, and water utilities, along with municipal utilities serving more than one city. The commission regulates rates, practices, and other aspects of utility operation.

Energy Section

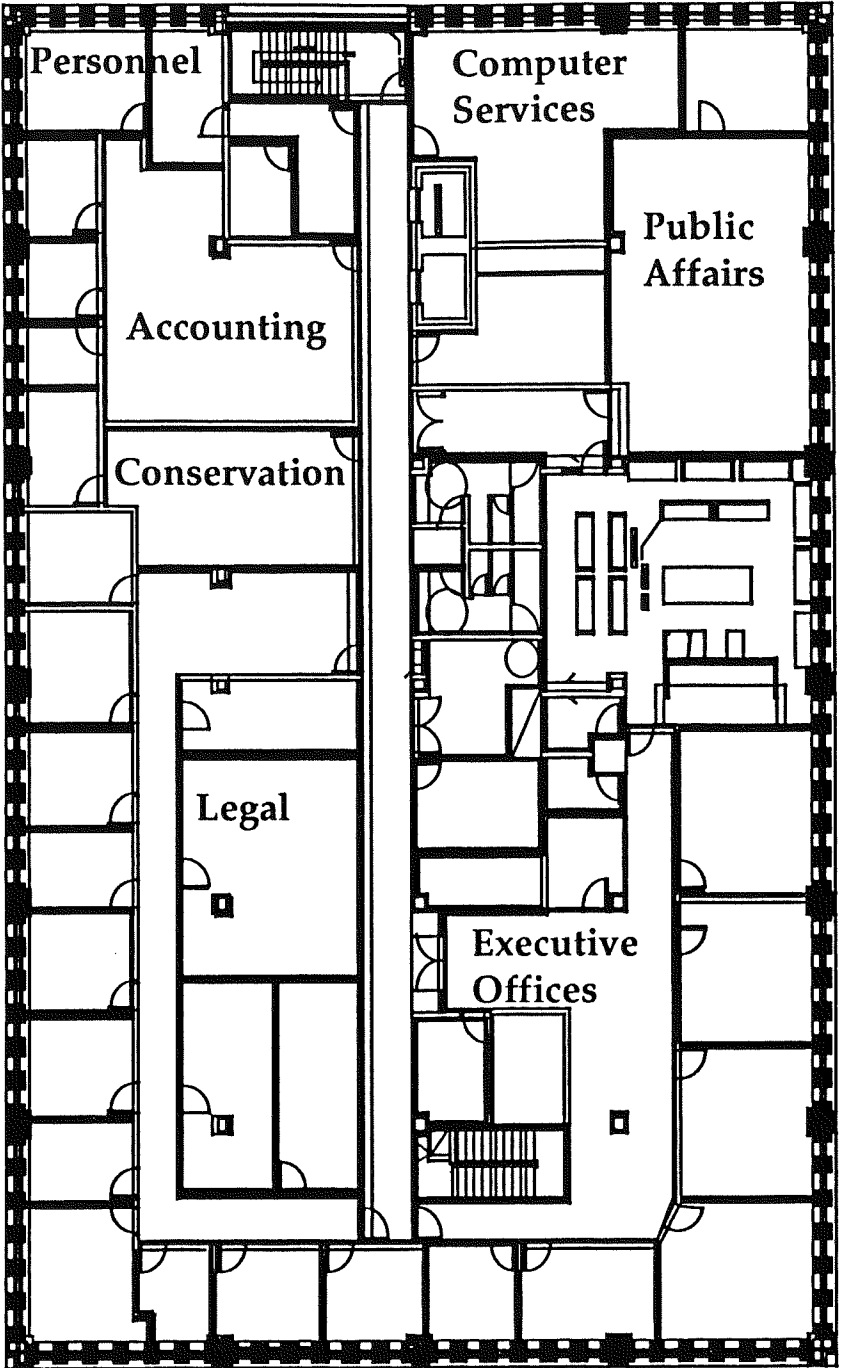
The Energy Section administers federal and state funded energy conservation programs which promote the efficient use of energy throughout Kansas.

Energy Features

The private offices on the south side of the building are equipped with dimmable electronic ballasts. Someone will demonstrate this system or you can observe it by closing the blinds and/or opening them. This feature saves energy and maintains a constant level of illumination.

The Energy Section has indirect fluorescent lighting. These fixtures virtually eliminate the reflections seen on computer terminals and are designed at a lower illumination level to save energy.

g 0 2-5-91
attachment 1-7



g.o. 2-5-91
attachment 1-8

Third Floor

Offices for the Commissioners, the Executive Director, Legal Division, Accounting Section, Conservation Division, Computer Services, and Public Affairs are located on the third floor.

Conservation Division

The Conservation Division is responsible for enforcing rules and regulations pertaining to the conservation of crude oil and natural gas, protection of fresh and usable water, protection of correlative rights, and prevention of unfair discrimination in favor of one common source of supply or one operator as against another.

Energy Features

The Commissioners' offices contain both dimmable electronic ballasts and motion sensors. The Executive Director's office is equipped to demonstrate dimmable electronic ballasts which can be observed by opening or closing the blinds.

The Public Affairs area has dimmable electronic ballasts.

g. o. - 2-5-91
attachment 1-9

New Commission Policies

Hours

The Commission is open to the public from 8 a.m. to 5 p.m., Monday through Friday.

Visitors

Visitors are required to sign in at the reception desk at the main entrance. Guests will receive a visitor's badge and must wait in the reception area until their host arrives to escort them to their office. All visitors will be escorted by Commission staff during their visit. At the end of a visit guests must sign out and turn in the visitor's badge at the reception desk.

Smoking

Smoking is prohibited inside the building. For energy efficiency purposes, the building was designed with minimum outside air intake requirements, and as such, smoking would create a health hazard.

*g.o. 2-5-95
attachment 1-10*

Telephone Numbers

General Information (913) 271-3100
271-3101
271-3102

Commissioners 271-3166
271-3350

Conservation 271-3232
Wichita (316)263-3238

Support Services 271-3266

Energy 271-3170

Legal 271-3288

Pipeline Safety 271-3223

Public Affairs 271-3140

Transportation 271-3145

Utilities 271-3165

Citizens' Utility Ratepayers Board
271-3200

g. O. 2-5-91
attachment 1-11

Petersen Development Corporation, Owner

William Sheahan Associates, Architects

Dahlstrom & Ferrell, General Contractor

Sub-Contractors/Suppliers

Abbey Simons Co.

Bettis Asphalt

The Capital Iron Works

Decogard Products

Ewell Construction

Gray Skies Painting

Horticulture Services

Lower Heating & Air Conditioning

Metal Arts

Newman Brothers, Inc.

Kansas Cabinetry, Inc.

Schmidtlein Excavating

Vincent Roofing, Inc.

BDR Engineering

Broadway Commercial

Joe Conroy Contractor

EMCO

Gate City Steel

Vic Hartman Masonry

Kansas Fire & Safety

McElroy Electric, Inc.

Midwest Acoustics & Drywall

NW Missouri Auto. Sprinkler

Schindler Elevator Co.

Townsend Glass & Mirror

Westside Appliance

Zincor, Inc.

The building's lighting is part of a Kansas Electric Utilities Research Program (KEURP) research and development project.

KEURP is a joint venture between Kansas Gas & Electric, KPL Gas Service, Kansas City Power & Light, Centel Electric, The Empire District Electric Company, and Midwest Energy, Inc.

The Program's goal is to enhance reliability and minimize the cost of electric service in Kansas.

OIL OVERCHARGE
EXPENDITURE SUMMARY
11-29-90

TRANSACTION, AGENCY OR PROGRAM	Pseudo Docket	Imperial Refinery Settlement 2667-0500	Amoco 1st Stage (Sec. 155) 2667-1000	Site/Flash Settlement 2667-1500	Amoco Bulk Credit Diesel Fuel 2667-2000	Chevron Oil Settlement 2667-2500	Amoco 2nd Stage Refund 2667-3000	Exxon Refund (Sec. 155) 2667-4000	OKC Settlement 2667-5000	Diamond Shamrock Settlement 2667-6000	Stripper Well Litigation 2667-7000	Texaco Oil Settlement 2667-8000	OKC Corporation 2nd Stage 2667-9000	Total
Receipt	100	0.00	2,103,600.00	0.00	3,216.00	1,527.00	469,128.00	23,958,453.17	319,500.00	553,448.39	12,595,920.96	2,544,723.07	1,090,157.00	43,639,673.59
Interest	200	0.00	0.00	0.00	0.00	0.00	63,476.63	6,740,968.74	7,716.83	208,050.02	3,203,435.59	165,547.48	68,535.01	10,457,730.30
Total		0.00	2,103,600.00	0.00	3,216.00	1,527.00	532,604.63	30,699,421.91	327,216.83	761,498.41	15,799,356.55	2,710,270.55	1,158,692.01	54,097,403.89
Department on Aging	39	0.00	0.00	0.00	0.00	0.00	0.00	0.00	0.00	0.00	0.00	0.00	(1,117,157.00)	(1,117,157.00)
Board of Agriculture	46	0.00	0.00	0.00	0.00	0.00	0.00	(40,000.00)	0.00	0.00	(40,000.00)	0.00	0.00	(80,000.00)
Department of Transportation (KDOT)	276	0.00	0.00	0.00	0.00	0.00	0.00	0.00	0.00	0.00	(2,700,000.00)	0.00	0.00	(2,700,000.00)
Department of Commerce	300	0.00	0.00	0.00	0.00	0.00	0.00	0.00	0.00	0.00	0.00	0.00	0.00	0.00
Department of Education	652	0.00	0.00	0.00	0.00	0.00	0.00	0.00	0.00	0.00	0.00	0.00	0.00	0.00
University of Kansas	682	0.00	0.00	0.00	0.00	0.00	0.00	(170,000.00)	0.00	0.00	0.00	0.00	0.00	(170,000.00)
Ks Commission on Veteran's Affairs	694	0.00	0.00	0.00	0.00	0.00	0.00	0.00	0.00	0.00	0.00	0.00	(39,500.00)	(39,500.00)
Wildlife & Parks	710	0.00	0.00	0.00	0.00	0.00	0.00	0.00	0.00	0.00	(2,400,000.00)	0.00	0.00	(2,400,000.00)
Low Income Energy Assistance Program(LIEAP) (SRS)	1628	0.00	(1,703,600.00)	0.00	0.00	0.00	0.00	(15,920,384.00)	0.00	0.00	(5,903,693.00)	(1,000,000.00)	0.00	(24,527,677.00)
Weatherization Assistance Program (WAP) (SRS)	2628	0.00	0.00	0.00	0.00	0.00	0.00	(2,790,574.00)	0.00	0.00	(730,381.00)	0.00	0.00	(3,520,955.00)
Total Transferred to SRS		0.00	(1,703,600.00)	0.00	0.00	0.00	0.00	(18,710,958.00)	0.00	0.00	(6,634,074.00)	(1,000,000.00)	0.00	(28,048,632.00)
Energy Extension Service (EES) Administration	5000	0.00	0.00	0.00	0.00	0.00	0.00	(16,374.96)	(2,325.50)	0.00	(1.85)	0.00	0.00	(18,702.31)
EES Contractual	5001	0.00	0.00	0.00	0.00	0.00	0.00	(408,332.35)	(64,025.80)	(12,080.35)	(15,645.32)	0.00	0.00	(500,083.82)
Total EES		0.00	0.00	0.00	0.00	0.00	0.00	(424,707.31)	(66,351.30)	(12,080.35)	(15,647.17)	0.00	0.00	(518,786.13)
Mennonite Housing & Rehabilitation (prior to 12/1/88, this was part of SECP)	7001	0.00	0.00	0.00	0.00	0.00	0.00	0.00	0.00	0.00	(174,000.00)	(20,935.21)	0.00	(194,935.21)
State Energy Conservation Program (SECP) Administrati	6000	0.00	0.00	0.00	0.00	0.00	(15,171.32)	(126,122.81)	0.00	0.00	(17,876.61)	0.00	0.00	(159,170.74)
SECP Contractual	6001	0.00	0.00	0.00	0.00	0.00	(340,751.37)	(1,214,173.45)	0.00	(29,899.86)	(181,972.56)	(24,996.78)	0.00	(1,791,794.02)
Total SECP		0.00	0.00	0.00	0.00	0.00	(355,922.69)	(1,340,296.26)	0.00	(29,899.86)	(199,849.17)	(24,996.78)	0.00	(1,950,964.76)
Kansas Conservation Bank Administration	7000	0.00	0.00	0.00	0.00	0.00	(4,548.47)	0.00	(7,149.41)	0.00	0.00	0.00	0.00	(11,697.88)
Kansas Conservation Bank Contractual	7002	0.00	0.00	0.00	0.00	0.00	(106,130.26)	0.00	(192,894.23)	0.00	0.00	0.00	0.00	(299,024.49)
Kansas Conservation Bank Contractual	6004	0.00	0.00	0.00	0.00	0.00	0.00	(1,001,100.30)	(60,000.00)	0.00	(7.62)	0.00	0.00	(1,061,107.92)
Total Kansas Conservation Bank		0.00	0.00	0.00	0.00	0.00	(110,678.73)	(1,001,100.30)	(260,043.64)	0.00	(7.62)	0.00	0.00	(1,371,830.29)
ICP Contracts	9001	0.00	424,671.19	0.00	0.00	0.00	0.00	5,932,835.81	0.00	0.00	0.00	0.00	0.00	6,357,507.00
ICP Payments	9001	0.00	(400,000.00)	0.00	0.00	0.00	0.00	(2,682,078.63)	0.00	0.00	0.00	0.00	0.00	(3,082,078.63)
ICP Releases	9001	0.00	24,671.19	0.00	0.00	0.00	0.00	359,926.34	0.00	0.00	0.00	0.00	0.00	384,597.53
ICP Encumbrances Outstanding	9001	0.00	0.00	0.00	0.00	0.00	0.00	2,890,830.84	0.00	0.00	0.00	0.00	0.00	2,890,830.84
PAYMENTS (BY PDOCKET)		0.00	(2,103,600.00)	0.00	0.00	0.00	(466,601.42)	(24,369,140.50)	(326,394.94)	(41,980.21)	(12,163,577.96)	(1,045,931.99)	(1,156,657.00)	(41,673,884.02)
PAYMENTS (BY VOUCHER # > 0)		0.00	(2,103,600.00)	0.00	0.00	0.00	(466,601.42)	(24,369,140.50)	(326,394.94)	(41,980.21)	(12,163,577.96)	(1,045,931.99)	(1,156,657.00)	(41,673,884.02)
REMAINING BALANCE (SPREADSHEET)			0.00	0.00	3,216.00	1,527.00	66,003.21	6,330,281.41	821.89	719,518.20	3,635,778.59	1,664,338.56	2,035.01	12,423,519.87

J.O. 2-5-91
Attachment 2

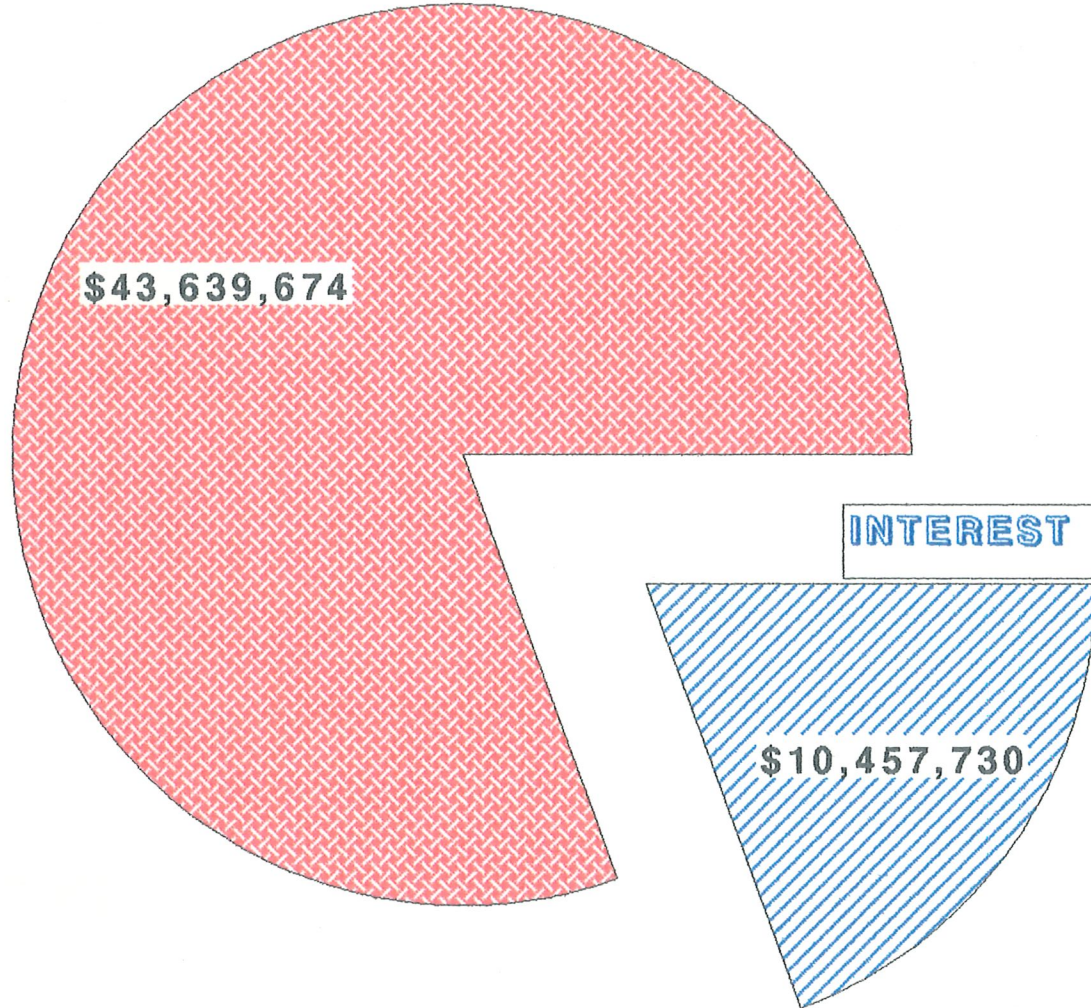
OIL OVERCHARGE MONIES - RECEIPTS AND INTEREST EARNED 1983 - 1990

RECEIPTS

\$43,639,674

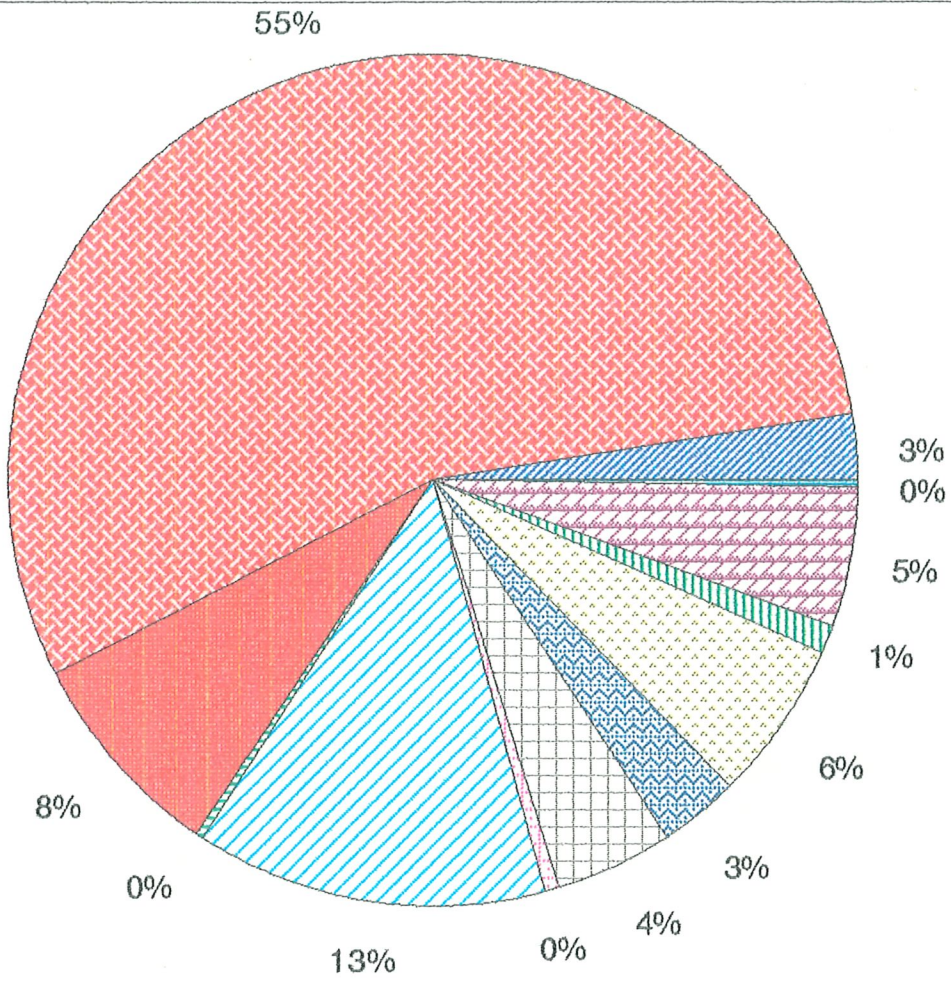
INTEREST

\$10,457,730



9.0 5-5-91
attachment 2-2

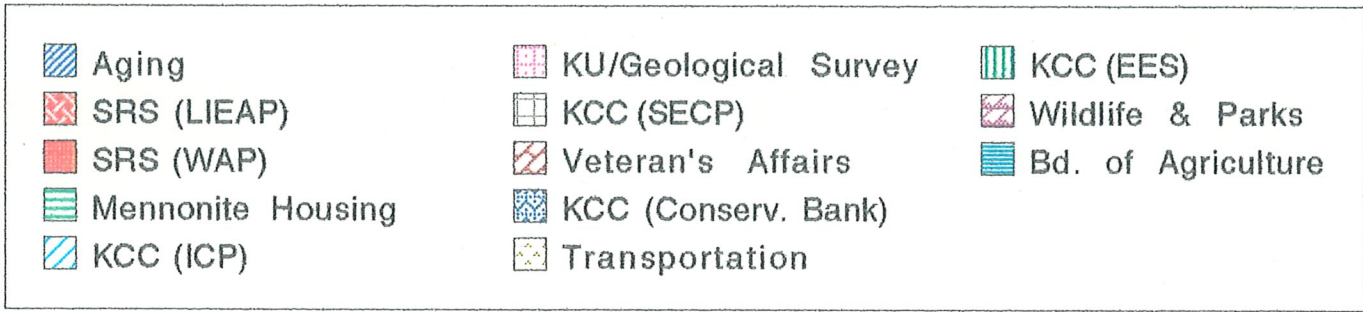
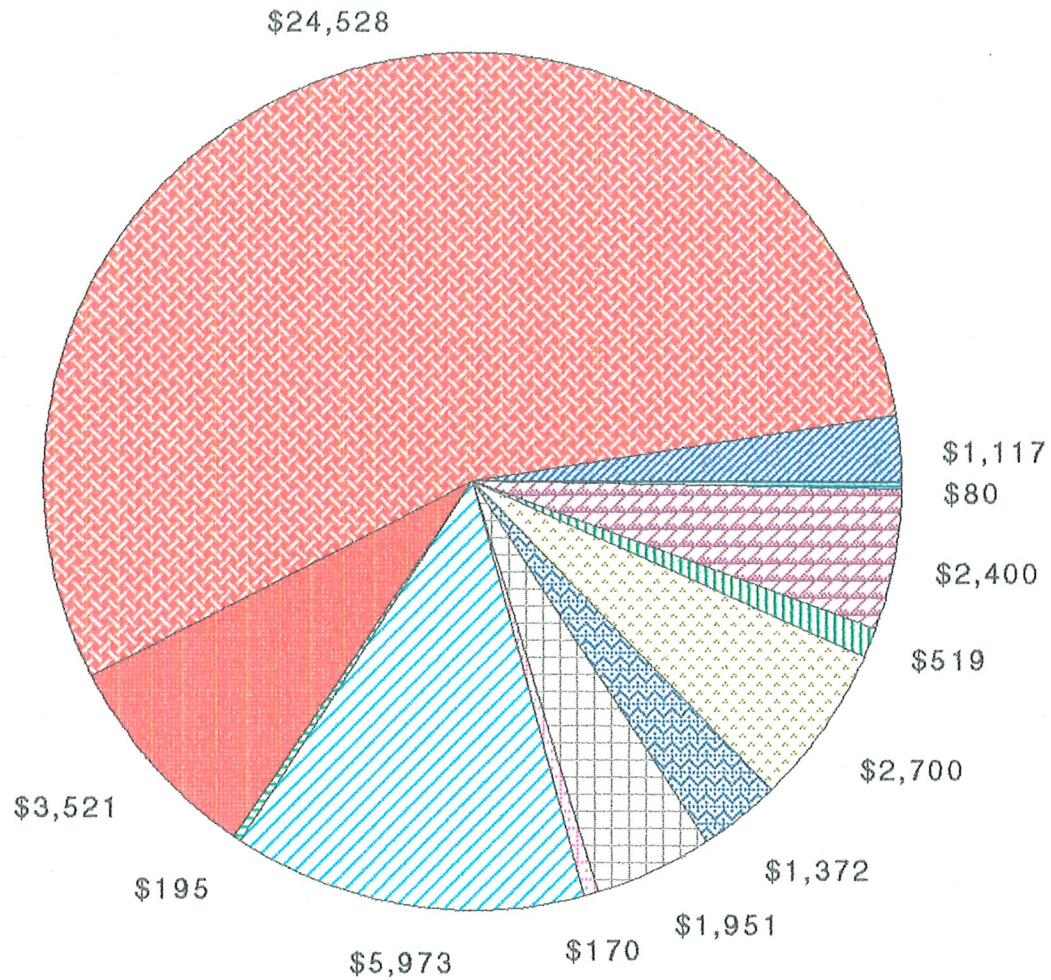
OIL OVERCHARGE DISBURSEMENTS 1983 - 1990



- | | | |
|-------------------|----------------------|--------------------|
| Aging | KU/Geological Survey | KCC (EES) |
| SRS (LIEAP) | KCC (SECP) | Wildlife & Parks |
| SRS (WAP) | Veteran's Affairs | Bd. of Agriculture |
| Mennonite Housing | KCC (Conserv. Bank) | |
| KCC (ICP) | Transportation | |

9-0 2-12-91
 attached 2-3

OIL OVERCHARGE DISBURSEMENTS (in thousands) 1983 - 1990



9-0 2-5-91
 attached 2-4