

MINUTES OF THE House COMMITTEE ON Computers, Communications & Technology

The meeting was called to order by Chairman George Dean at
Chairperson

7:30 a.m./~~p.m.~~ on January 30, 1991 in room 529-S of the Capitol.

All members were present except:

Committee staff present: Julian Efird, Research
D. Duffy, Research
Mary Cheng, Revisor's Office
Mary Valdivia, Committee Secretary

Conferees appearing before the committee: Dr. Russ Getter
Others Present: See Attached

Meeting was called to order 7:30 AM, by Chairman Dean.

Chairman Dean introduced Dr. Russ Getter, DISC. Dr. Getter passed out a paper entitled DISC's Statutory Obligations (K.S.A) 75-4701 et. seq.) and attachments (Attmt. #1).

Secretary of Administration, in the last couple of years has assigned to DISC the functions of Central Mail, Telephone Switchboard and other duties.

Disc Flow Chart: Why are two Deputy Directors Classified and two Unclassified?

It is just the way it happened. It works fine the way it is, this is the reason no one has sought to change this. Incumbents are satisfied with their role. From the Secretary's perspective, understand he may wish to have changed at some point.

Dr. Getter discussed in detail, Chart detailing Network Services. (KIFC) (Attmt. #1, pg. 4). Everything DISC does, with possible exception of central mail, should be looked at from a network perspective. It is the key to the information industry. That is what ties it all together. It is not computing, the perspective if you come through that lens and look at DISC and everything it does as a network perspective. Everything else, including data processing, is just a network service.

Is information available, or could it be provided, as to how much as been invested by the state for computerization.

Financial report will be available in less than a month.

Explanation given on Functional View of Telephone Service Provided by KANS-A-N Plus (Attmt. #1 pg. 5).

Definition of LATA: Local Access and Transport Area -A LATA is equivalent to the area codes around the nation. The state has three lats. Three long distance switches are needed for each lata. One is located in the basement of Landon State Office Building, one at Wichita State University and one at Med Center in Kansas City. These are referred to as Points of Presence (POP). These are different from the local switching. Southwestern Bell provides the switching when we make a call from one another.

CONTINUATION SHEET

MINUTES OF THE House COMMITTEE ON Computers, Communications & Technology
room 529-S, Statehouse, at 7:30 a.m./p.m. on January 30, 1991

KANS-A-N Costs and Utilization: (Attmt. #1 pg. 6).

Is there as much pressure from departments to be cautious of using the telephone when the cost is higher as to when the cost is lower?

Sources of DISC Revenues - FY 1990: (Attm. #1 pg. 12):

If you spend one million for capital equipment, how is that cost been allocated to KAN-S-AN, to the user?

We pay for the equipment or finance ahead of time, and depreciate over 5 year period, the depreciated amount goes in as capital cost of the equipment and added in with the labor cost and other costs.

Transmission modems, are transmissions ending as soon as transmission is complete, or is there a potential for the line to be left open? Does it stay open a couple of hours or does it end as soon as transmission is over with?

SRS, Revenue and Human Resources these are fixed full time data circuits 24 hours a day) (dialogue circuit is open only while communication is taking place).

DISC Expenditures & Terminal Connections:

Clarification was made on this Graph. The graph is dealing with total DISC expenditures as opposed to data processing charges. Chart is total expenditures for all agencies.

KANS-A-N - Rates Per Hour:

How does this compare with commercial user costs?

State is getting as good a deal as possible to get today.

MVS CPU HOURS:

Do you think departments are going out and getting PC's because of cheaper rate or because of open contract?

There has been a 400% increase in number of hours in four years, are we using all of that. Are we running reports for the sake of running reports. Are we using all information that is being put in?

Over 20 million dollars were spent on mini computers, PC's, etc., we spent all this money on mini computers, why is it at the same time we are spending millions of dollars for people to use PC's, and buying all these mini computers. Where are we getting any kind of productivity. Why the 400% increase?

CONTINUATION SHEET

MINUTES OF THE House COMMITTEE ON Computers, Communications & Technology
room 529-S, Statehouse, at 7:30 a.m./~~p.m.~~ on January 30, 1991

The nature of information work is changing profoundly and sum totals of all those decisions, are decisions made by agency management concerning how they are going to organize and get the work done in those agencies.

Dr. Getter stated that one of the main applications that came on line in 1988 and geared up in 1989 that drove up the hours was VIPS, which is the major application running on the mainframe from the Department of Revenue. As you get larger applications running on line such as KFIS in SRS you are increasing these hours significantly. These are major applications that were never run on a PC or mini computer, but they have terminal users located throughout the state that tap in to the data bases. It is very difficult to look at the total charges for CPU hours and say that 60% was related to VIPS, it is very difficult to identify what applications are using what proportion of the CPU hours.

Rep. Mead commented that it seems the Legislature is expected to deal with computerization with bits and pieces of information to make final decisions. It seems things are out of control, and when you sum it all up not one person, agency or group of people make a final decision on whether or not we have a cost effective purchase and cost benefit ratio. Would like to see somebody in the agency say here is what we have approved and this is what we can justify.

Dr. Getter was asked to come back and finish his talk about DISC.

There is a tour scheduled for January 31, 1991. Will tour Docking Building and Landon Building. Will meet at information booth at 7:30 AM.

Next regular meeting is scheduled for February 5, 1991, 7:30 AM.

Meeting adjourned at 8:40 am.

Presentation To The
Committee on Computers, Communications, and Technology
of the Kansas House of Representatives
January 30, 1991

DISC's Statutory Obligations (K.S.A. 75-4701 et. seq.)

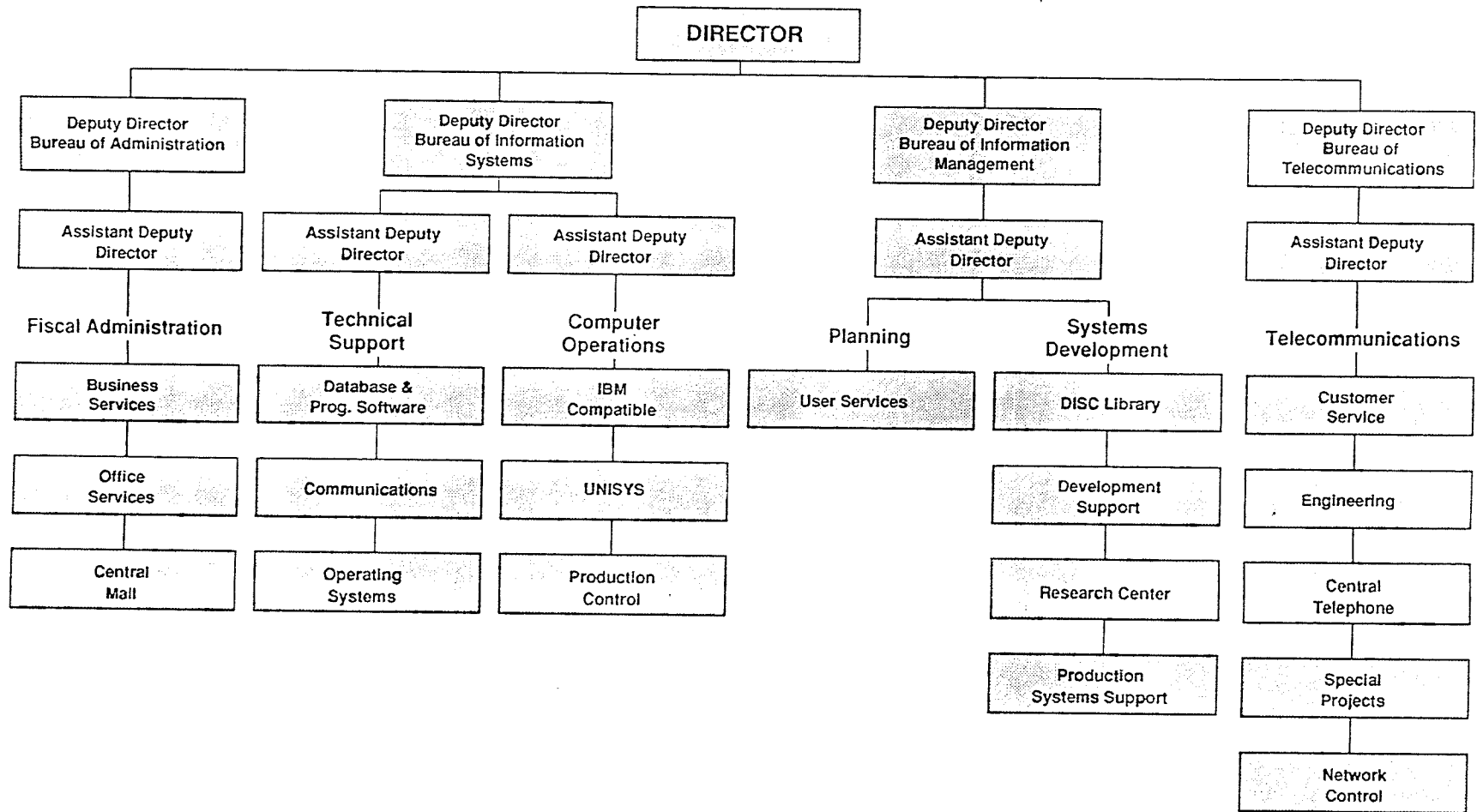
- A. Provide Central Computing Services
- B. Provide Contract Software Development Services for Agencies
- C. Provide Local Telephone Services
- D. Provide Telecommunications Consultation For Agencies
- E. Provide Intercity Voice and Data Network Services
- F. Write Specifications For Telecommunications Equipment and Services For All Agencies and Institutions
- G. Be The Single Point of Contact For All FCC Licensing
- H. Write/Approve Specifications For Computing Equipment For All Agencies (Not Regents Institutions)
- I. Develop Standards For All Information Technology and Audit Practices
- J. Approve Acquisition of All Information Technology Equipment
- K. Coordinate and Approve All Telecommunications Services
- L. Submit a Statewide Plan For Information Technology To The Information Systems Policy Board
- M. Establish System of Rates For Services Which Meets Federal Cost Allocation Standards

CCT
1-30-91
Attachment # 1

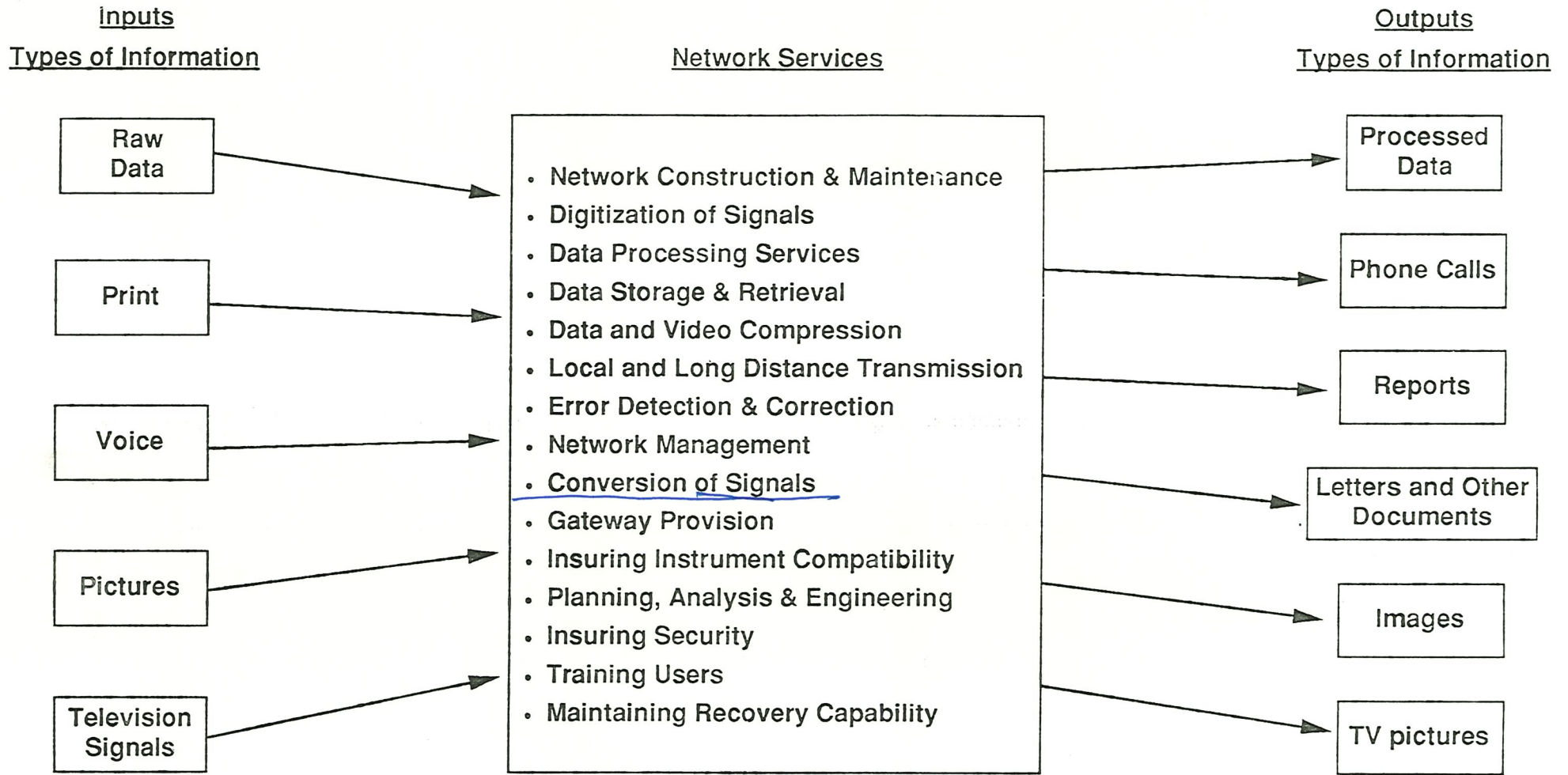
Additional Secretarial Assigned Duties

1. Chair and staff the Public Broadcasting Commission. (K.S.A. 75-4905, et seq.) This Commission has two legislative members, two public members appointed by the Governor, one member from the Board of Education and one member from the Board of Regents.
2. Chair the ASTRA Board. (K.S.A. 74-5701 et seq.) The full name of this board is Automated Statewide Telecommunications and Records Access. The board is composed of the Director of the KBI and the Superintendent of the Highway Patrol, plus the Secretary of Administration's designee, who chairs the board.
3. Serve on the Geographic Information Systems (GIS) Policy Board. Members of this board are appointed by the Governor and it is responsible for coordinating all of the State's efforts in developing a statewide GIS.
4. Serve on the Records Board. (K.S.A. 75-3501 et seq.) The board is composed of the attorney general, state librarian, secretary of administration, secretary of the state historical society, or their designated representatives, the state archivist, and such other ex officio members as are provided. The attorney general shall be chairman and the state archivist shall be the secretary.
5. Serve ex officio on the Regents Computer Advisory Committee. DISC is required by statute to approve all computer purchases by the Regents institutions as well as state agencies. In order to fulfill that role, DISC has been asked to sit ex officio on the Regents Computer Advisory Committee --- a group composed of the data processing directors in the Regents institutions.
6. Serve on the Governor's Task Force on Educational Telecommunications. This task force is chaired by Lee Droegemueller, Commissioner of Education; Jerry Jennings represents DISC on this task force.

DIVISION OF INFORMATION SYSTEMS & COMMUNICATIONS



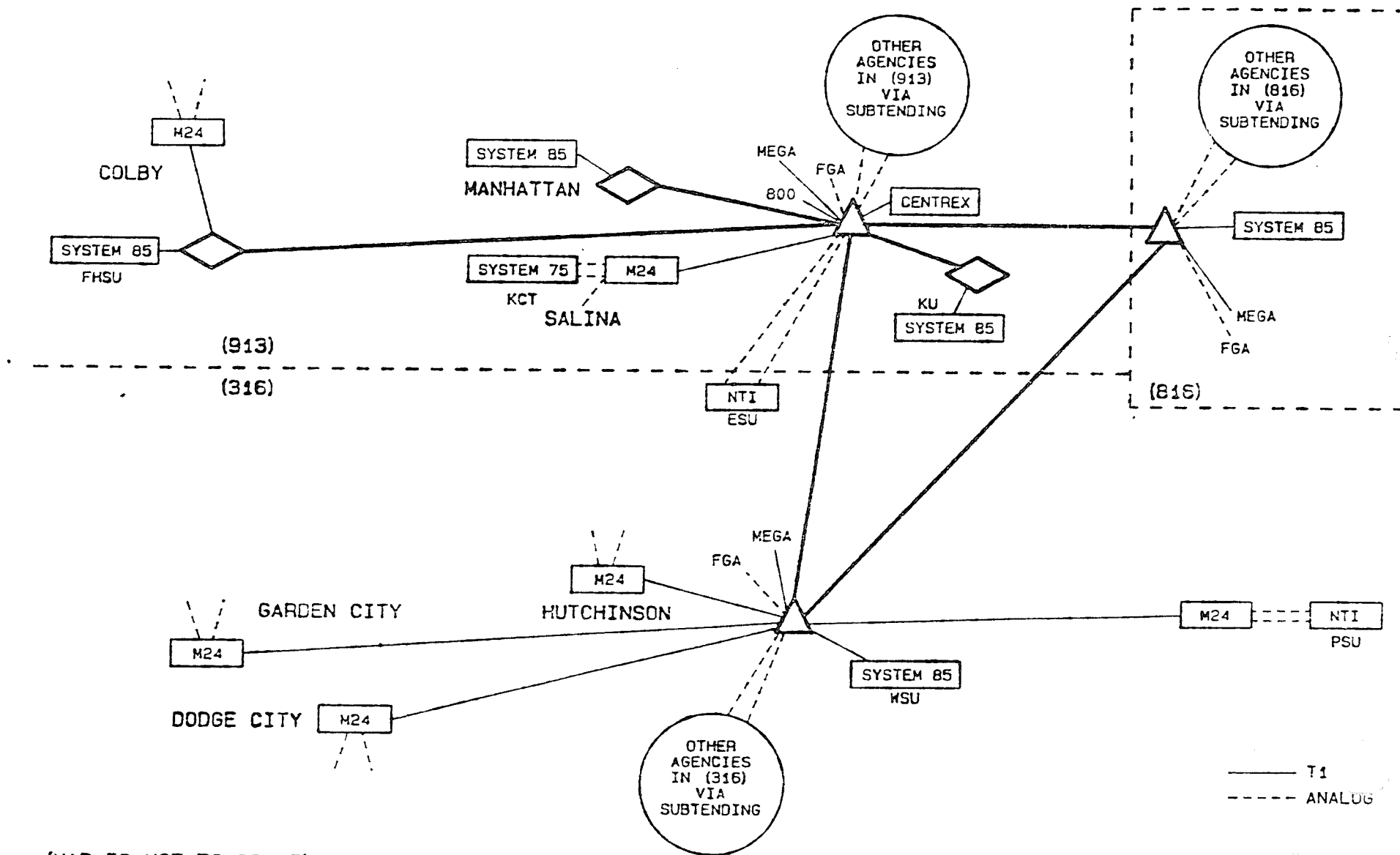
KANSAS' INTEGRATED INFORMATION AND COMMUNICATIONS NETWORK



36,000 Telephones; 8,000 Online Terminals and PC's; 15 mainframe computers; 125 microcomputers; Nationwide Connectivity.

1-4

FUNCTIONAL VIEW OF TELEPHONE SERVICE PROVIDED BY KANS-A-N PLUS



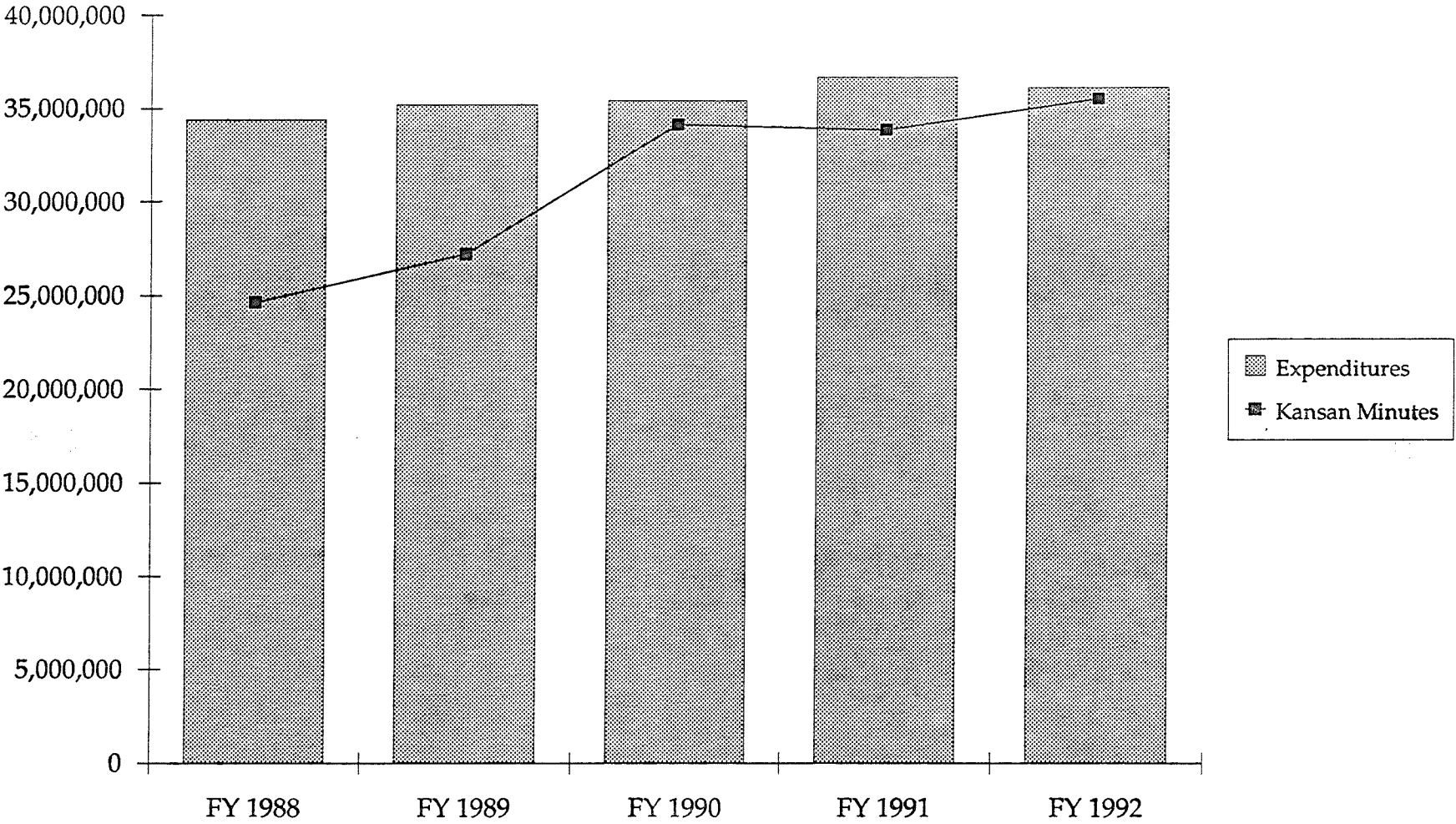
1-5

(MAP IS NOT TO SCALE)

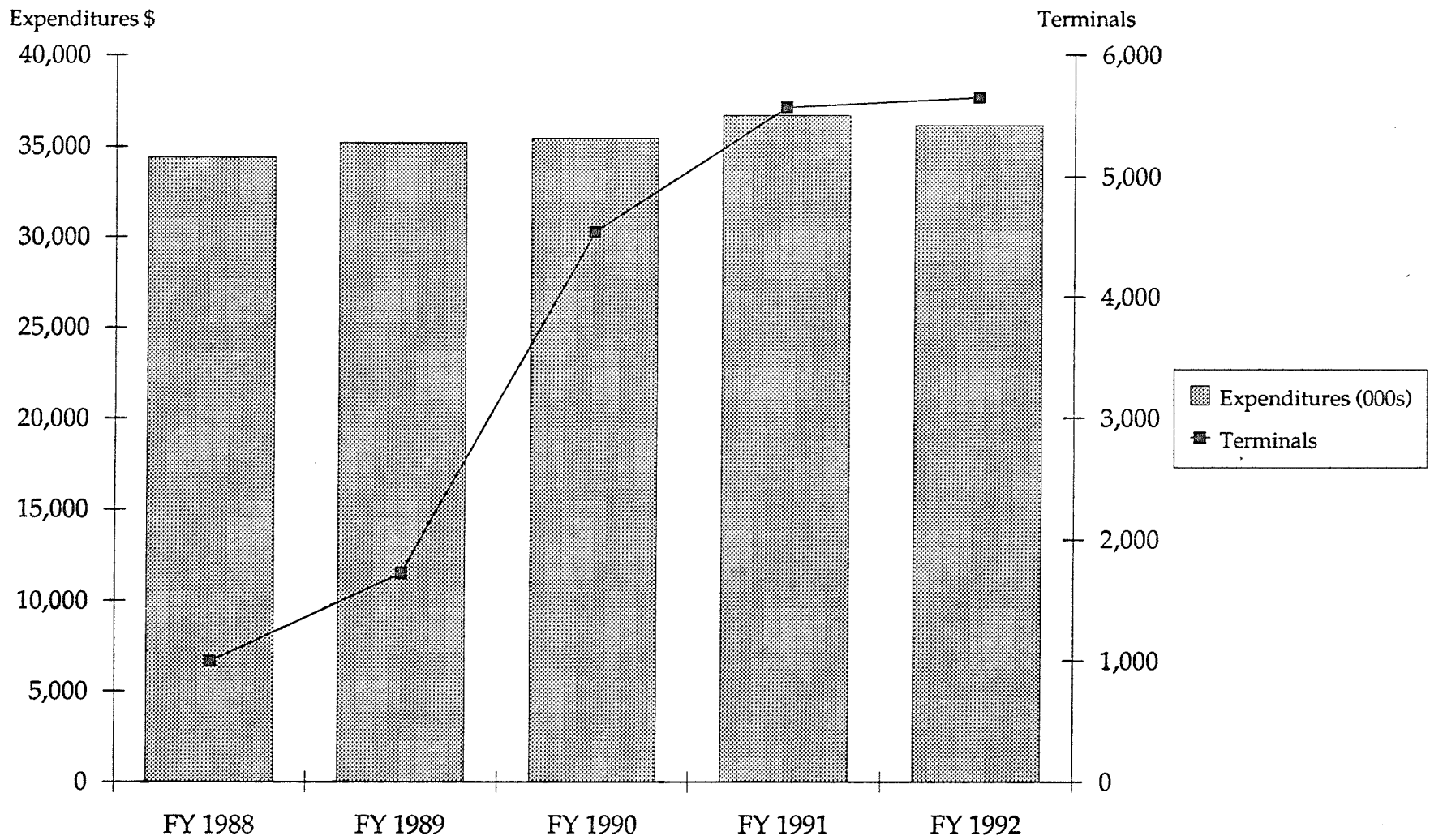
KANS-A-N Costs and Utilization

	Actual FY 1988	Actual FY 1989	Actual FY 1990	Estimated FY 1991	Estimated FY 1992
KANS-A-N Direct Costs	\$8,028,569	\$7,645,267	\$7,288,286	\$7,184,493	\$6,935,867
Utilization-Total Minutes	27,215,880	33,322,762	34,157,998	33,885,625	35,579,906
Avg. Direct Cost Per Min.	\$0.2950	\$0.2294	\$0.2134	\$0.2120	\$0.1949

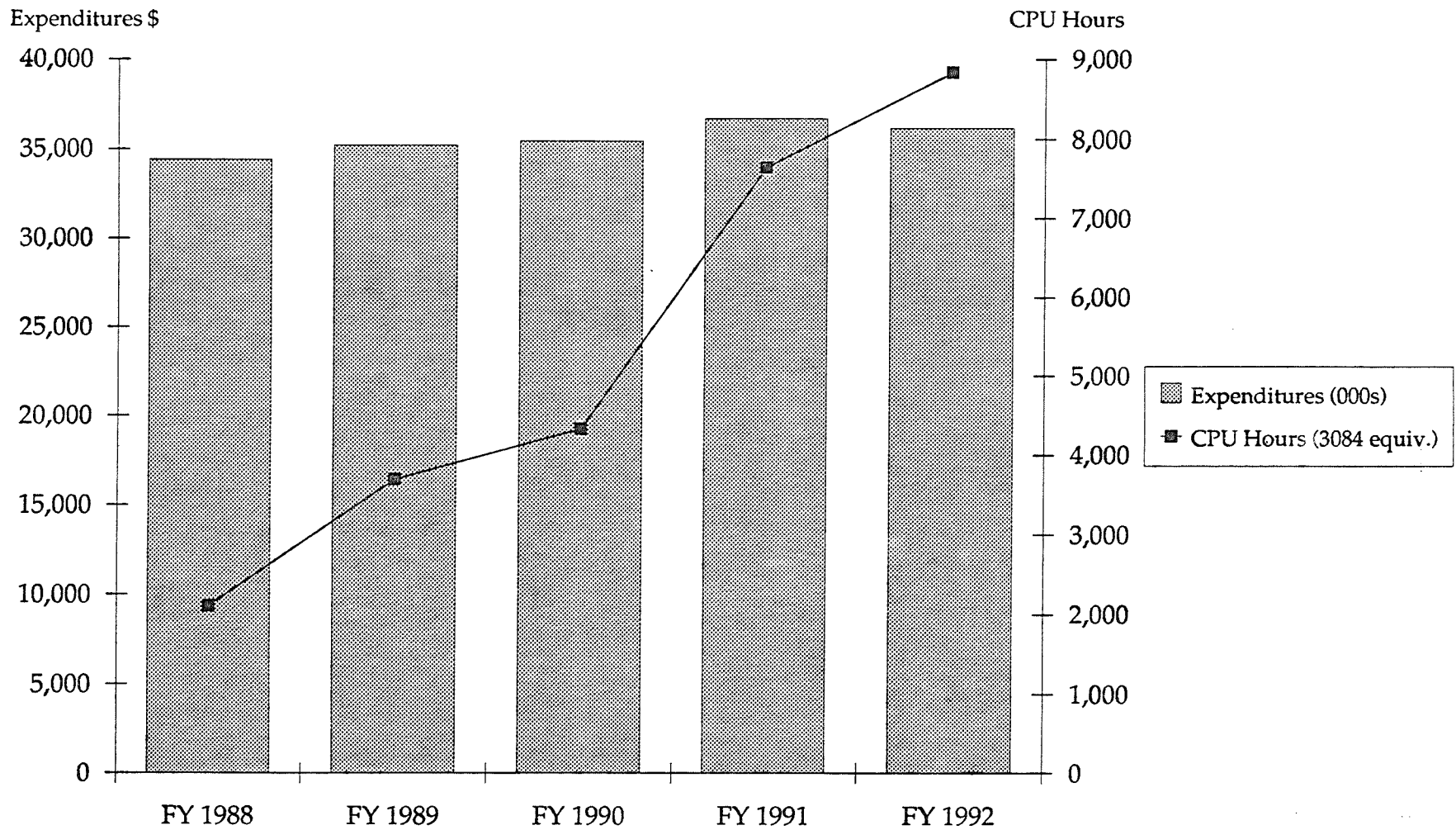
DISC Expenditures and KANS-A-N Minutes



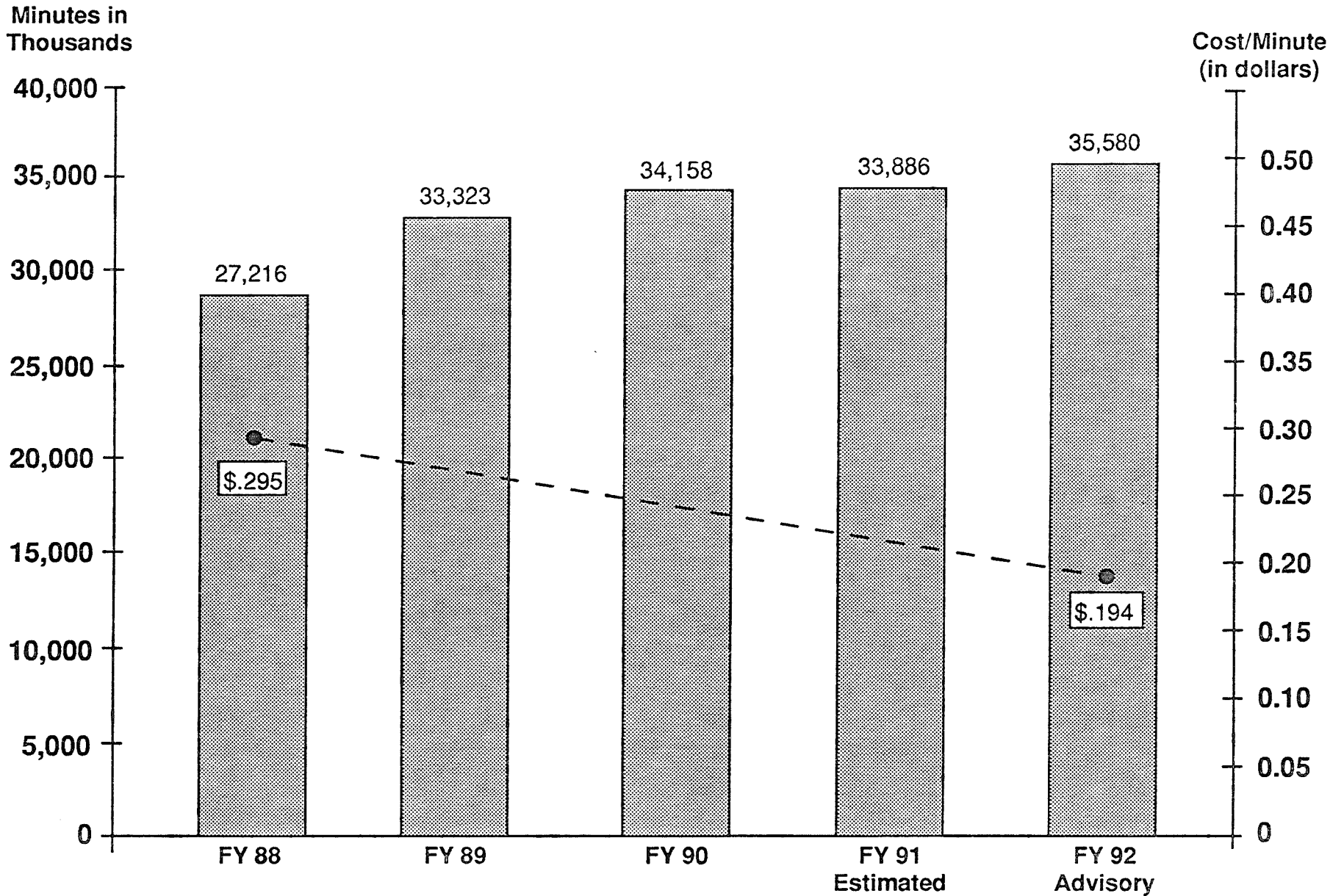
DISC Expenditures and Terminal Connections



DISC Expenditures and CPU Hours



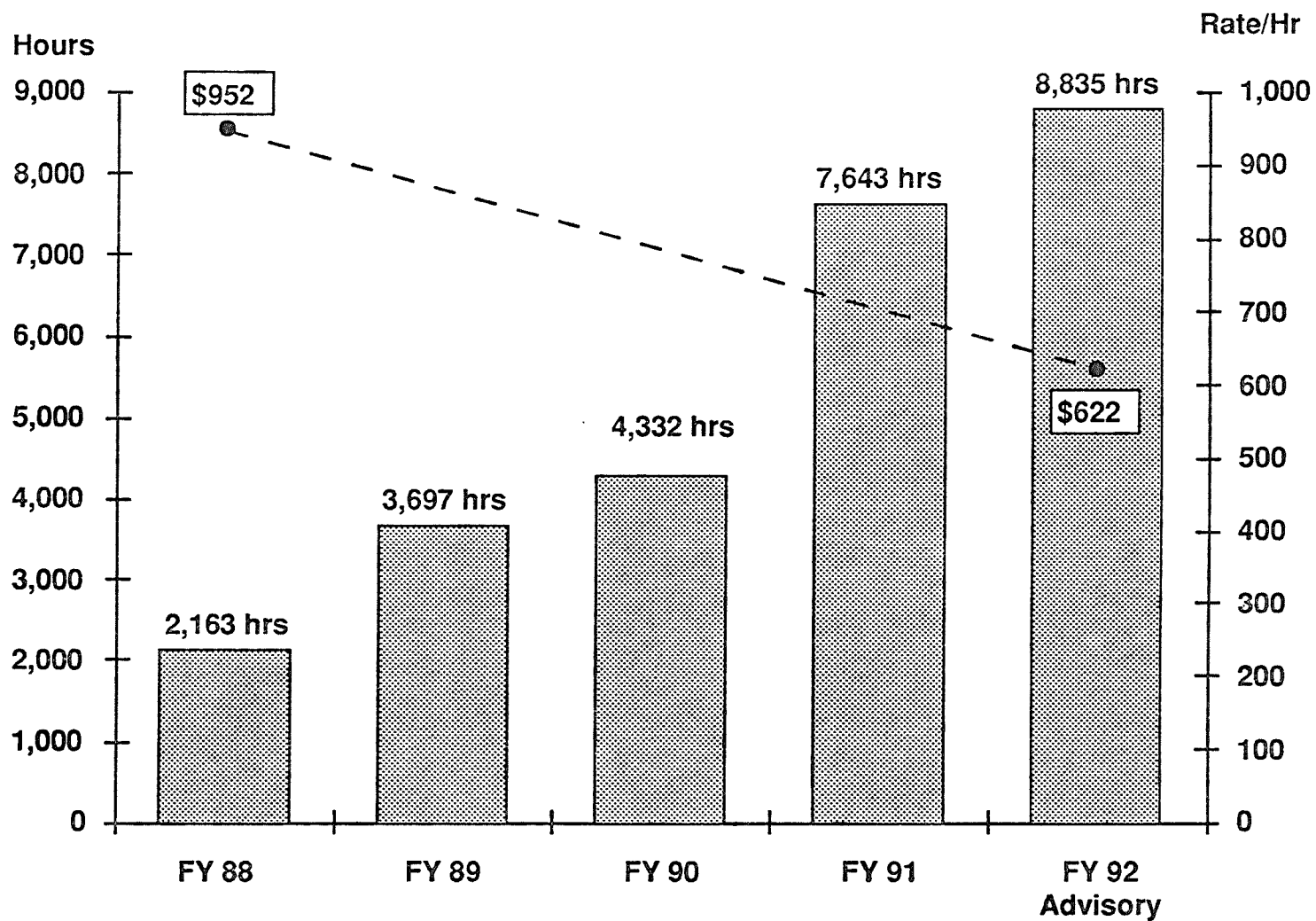
KANS-A-N MINUTES AND COST/MINUTE



Increased use of the statewide telecommunications network has resulted in lower average cost/minute for KANS-A-N.

01-1

MVS CPU HOURS AND RATE/HOUR

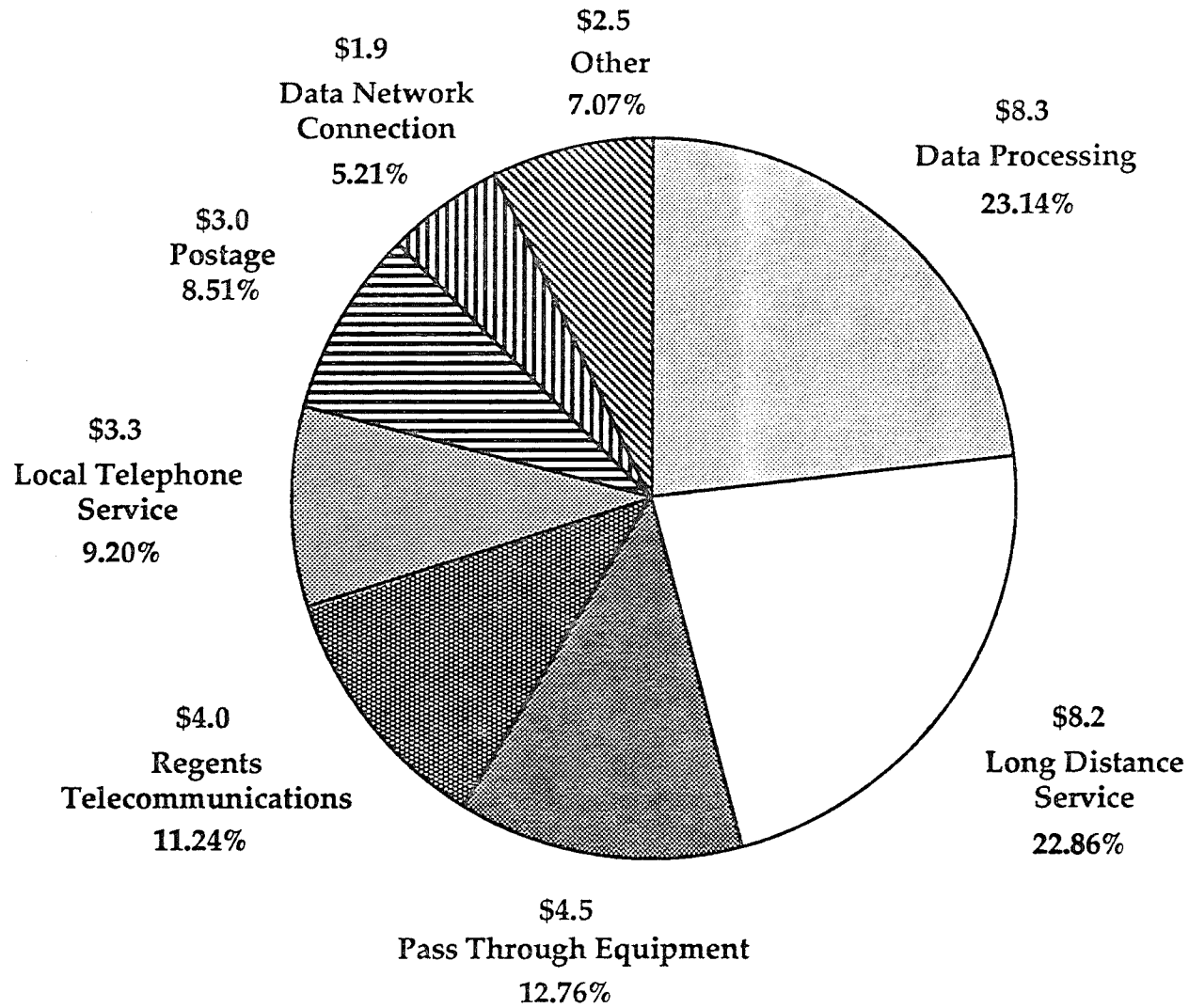


Increased use of information processing resources has resulted in lower average costs per hour processed.

11-1

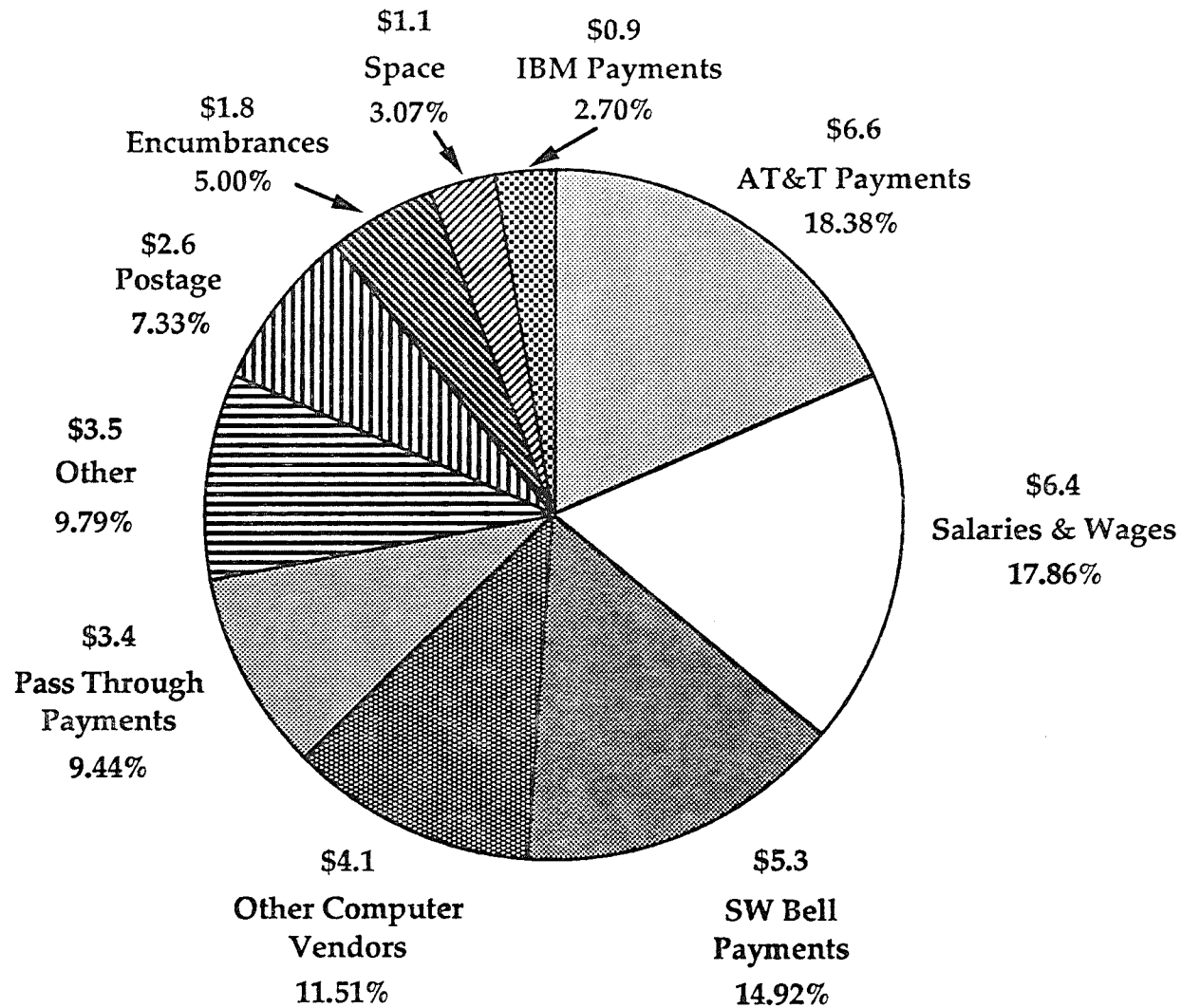
The Sources of DISC Revenues – FY 1990

\$35.7 Million



The Distribution of DISC Expenditures – FY 1990

\$35.7 Million



Major Accomplishments

- A. Competitively Rewired 400 Buildings Statewide For Voice and Data, And Installed Premise Distribution Systems (PDS) Tying The Buildings Together In A Given Location
- B. Competitively Procured Local Switching Services For Agencies and Institutions
- C. Competitively Procured Handsets and Key Telephones
- D. Competitively Acquired Data Terminals and PC's
- E. Competitively Upgraded Computers (Used) and Peripherals
- F. Converted KANS-A-N To Integrated Digital Voice and Data Network For All Agencies and Institutions
- G. Lowered CPU Rates
- H. Lowered Long Distance Rates
- I. Increased Output by Approximately Three Times, With Essentially Very Little Additional Staff
- J. Have Become A Full-Fledged Information Utility For State Government Operations, And Changed Our View Of DISC's Mission In The Process
- K. Have Institutionalized Sound Planning and Standards
- L. Competitively Acquired A Statewide Law Enforcement Switch

Cost Allocation Methodology Overview

- * Cost center structure update
- * All historic expenditures recorded by cost center
 1. Cost center accounts reconciled to STARS
 2. Cost center accounts reconciled to internal receipt accounts
- * All budgeted costs are recorded by cost center
- * Step-down allocation method
 1. Director's office allocated to 4 bureaus
 2. Bureau's costs allocated to work group
 3. Work group costs allocated to rate centers
- * Revenues for each rate center are compared to the actual costs for each rate center to determine profit and loss
- * All profits are subtracted from the rate center costs for future years (rates are lower to return profit)
- * All losses are added to the rate center costs for future years (rates are raised to recover loss)
- * Fully allocated rate center costs are divided by an estimate of utilization to determine rate

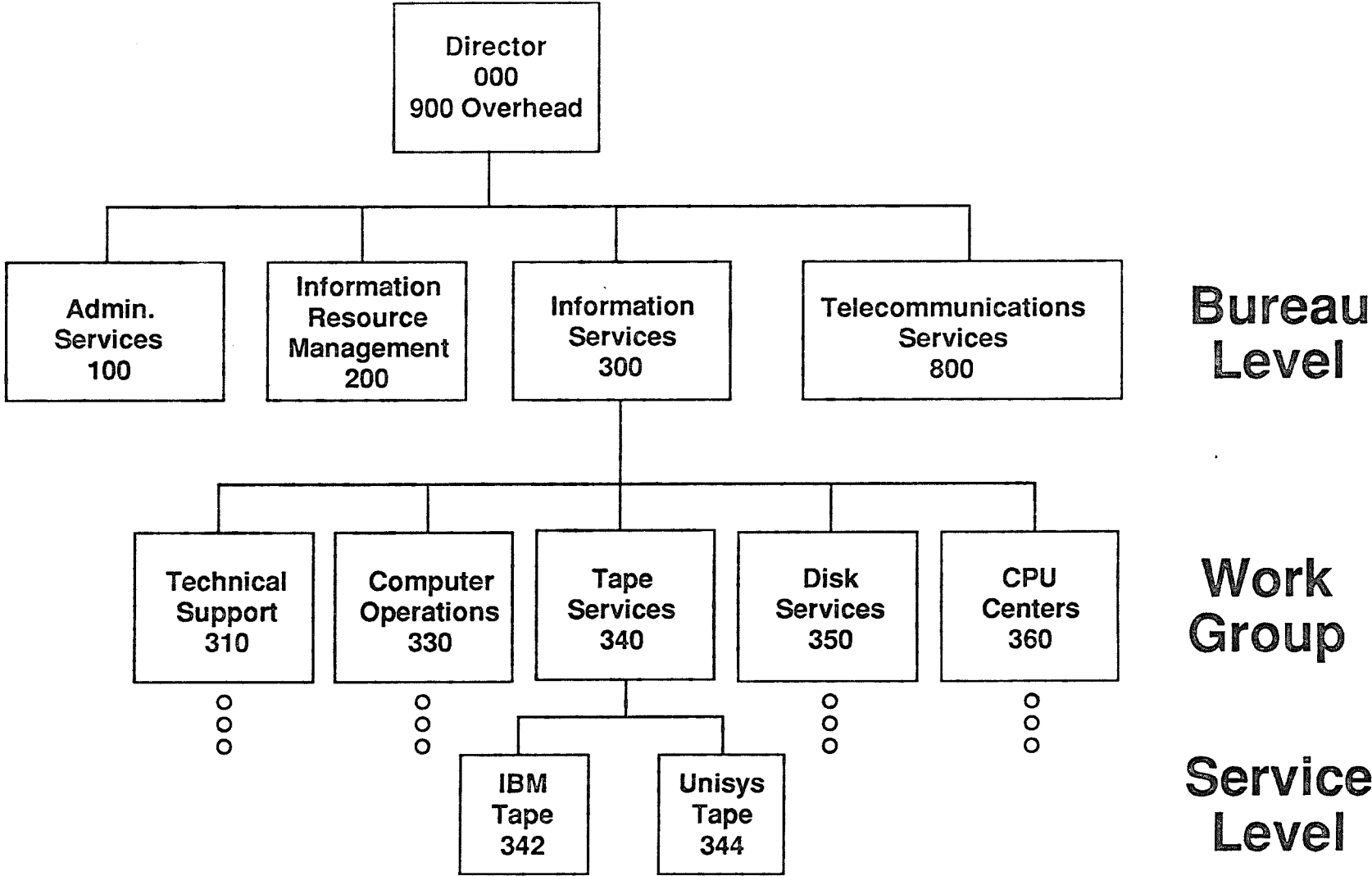
Federal Role

- * We function like a private corporation
- * Rates are set to recover \$26,100,000 (FY 91)
- * Federal guidelines determine how rates are set
- * Rates are based on actual costs calculated according to GAAP
- * A 60 page annual report is filed with the Office of Cost Allocation, Health and Human Services
- * In the last 4 years, 18 federal and state auditors from 5 agencies have reviewed rates
- * Interest expense cannot be paid with federal funds
- * Only the depreciated amount of capital asset costs can be included in rates
- * 60 day cash flow balance is permitted by federal guidelines
- * Federal guidelines require that profits are returned in lower rates and losses are recovered by increasing rates in the next year's rates

DISC Cost Centers

Nbr	Description	Nbr	Description
000	Director's Office	400	Central Mail
100	Bureau of Administrative Services	410	Outgoing Mail
110	BAS Management	420	Building Mail
120	BAS Accounting	422	Delivery
130	BAS Office Services	424	Special Services
200	Bureau of Info. Resource Management	700	KAECSSES
210	Information Resource Management	730	KAECSSES Computer Operations
220	Information Technology Center	760	KAECSSES CPU
230	Systems Development Management	800	Bur. of Telecom./Network
232	Systems Development	810	Network Design & Engineering
240	User Training	820	Network Equipment/PDS
241	DISC Provided Training	822	Topeka PDS
242	Training Purchased for Resale	824	Regents PDS
250	WANG Data Center	830	Backbone Network
260	DISC Library	832	Backbone Software
270	Data Base Administration	833	Backbone Hardware
300	Bureau of Information Services	834	Backbone Vendor Services
310	Technical Support	840	Network Operations
320	Minicomputer Services	841	Information Systems Network - ISN
330	Computer Operations	842	SNA Network Software
332	Computer Operations—IBM	843	SNA Network Hardware
334	Computer Operations—Unisys	844	Network Circuit Charges
340	Tape Services	845	Switching Services - Topeka
342	Tape Services—IBM	846	Law Enforcement Switch
344	Tape Services—Unisys	847	Long Distance Voice (Kansan)
350	Disk Services	848	Topeka Switchboard
352	Disk Services—IBM	849	Video
354	Disk Services—Unisys	850	Network Equipment/Terminal
360	CPU CENTERS	851	Labor Equipment Maintenance
361	IBM Processors & Equipment	852	Labor Moves, Adds, Changes
362	IBM Operating Systems & Software	853	DTE Equipment Pass Through
363	Unisys Processors & Equipment	854	Modem Management
364	Unisys Operating Systems & Software	855	Short Haul Lease Modems
370	Input/Output	856	4800 BPS Lease Modems
371	IBM Local Printing	857	9600 BPS Lease Modems
375	Unisys Printers	858	14.4 BPS Lease Modems
380	IBM Monitors/Data Base	859	Digital Service Units
381	CICS	860	Miscellaneous Telecomm at Cost
382	ADABAS	861	AT&T Customer Leased Equipment
384	SUPRA	862	Customer Certificate Equipment
385	ROSCOE	863	Wichita Plexar Service
386	DB2 RESOURCES	864	KAECSSES Pass Through
390	VM Center	865	Regents Switching
391	VM Processors & Equipment	866	Geographic Information Systems
392	VM DASD	867	Ks. Fin. Info. System Costs Pass Through
393	VM Technical Support	868	Contract Telecomm Service (Resale)
394	VM Software	870	Telecomm Equip. Inventory
		871	Equipment Purchased for Resale
		872	Equipment for Maintenance SL
		873	Equipment for Maintenance ML
		900	Overhead
		910	Space
		920	Administrative Overhead
		930	Reimbursable Costs

DISC Cost Center Structure



Department of Health and Human Services

Certification Form

I hereby certify that the information contained in the Central Service Cost Allocation Plan for the Division of Information Systems and Communications, Department of Administration, State of Kansas, for the fiscal year ended June 30, 1991 and which is attached to this certification is prepared in conformance with Federal Management Circular 74-4 and the implementing instructions contained in the Guide OASC-10 published by the department of Health and Human Services. I further certify: (1) that no costs other than those incurred by the grantee/contractor or allocated to the grantee/contractor via an approved central service cost allocation plan were included in its indirect cost pool as finally accepted, and that such incurred costs are legal obligations of the grantee/contractor and allowable under the governing cost principles, (2) that the same costs that have been treated as indirect costs have not been claimed as direct costs, (3) that similar types of costs have been accorded consistent accounting treatment, and (4) that the information provided by the grantee/contractor which is used as a basis for acceptance of the rate(s) agreed to herein is not subsequently found to be materially inaccurate.



Signature

Russell Getter
Director
Division of Information Systems and Communications
Department of Administration
State of Kansas

January 7, 1991

Rate Objectives

- * Cost-Based
- * No more than 10% variation from year to year



DEPT OF ADMINISTRATION

DIVISION OF INFORMATION SYSTEMS AND COMMUNICATIONS

751-S, Landon State Office Building
900 S.W. Jackson
Topeka, Kansas 66612-1275
(913) 296-3463

Revisions
POLICY
AND
PROCEDURE
MEMORANDUM
PPM 2200.07

Bureau of
Administrative
Services

Effective
Date
08/1/90

- 1.0 SUBJECT: Rates for DISC Services
- 2.0 DISTRIBUTION: All State Agencies
- 3.0 FROM:



Russell Getter, Director

- 4.0 PURPOSE: To publish rates for DISC information processing and telecommunications services for FY 1991. The revised FY 1991 rates are based upon DISC's projected operating costs and estimates of agencies' use of DISC services.
- 5.0 BACKGROUND: During FY 1990 DISC completed a reconfiguration of the statewide telecommunications network which will provide more efficient service at lower costs to all state agencies. This network integrates the technologies for transmitting voice, data, and video. DISC recaptures network costs in a service category called "Network Connection". This category includes rates for connecting single line telephones, multi-line phones and data terminals to the statewide network, including a transport rate for devices that use the network but do not use DISC's mainframe computers. The network transport rate includes providing electronic mail (PROFS). PROFS signons are obtained from the DISC Information Technology Center (913-296-4999).

In FY 1991 DISC will begin billing for CICS on-line processing based upon the CPU hours. This is a change from previous billing based upon transaction counts for messages sent to and from terminals. This new approach to billing, however, more fairly reflects the resources that customers use.

DISC and the Regents Institutions have established a statewide packet data network called "Information Services Network (ISN)." The ISN uses an asynchronous protocol. DISC will bill services on this network based upon the amount of data transmitted, measured in units of 1,000 packets, with a packet containing 256 bytes of information. Agencies can connect to the ISN network by dialing nodes at Kansas City, Wichita, Topeka, Salina and Hays. Agencies interested in this service should contact the Bureau of Telecommunications.

DISC will begin offering voice mail services to Topeka area agencies switches beginning in October 1990. The estimated rate for this service will be \$15.00 per month. Agencies interested in this service should contact the Bureau of Telecommunications.

In addition, DISC has renamed its Management and Control Surcharge to Administrative Surcharge. This new surcharge will be applied to DISC's billings for rated service and must not be paid with federal funds.

6.0 **POLICY:** The revised rates for DISC services are listed in the following four sections.

- 1) Usage Sensitive Rates. The total amount billed varies according to the amount of resources used by an agency. For example, the bill for CPU usage is a function of the number of CPU hours required to perform a job and the time of day the job is run.
- 2) Network Connection. These rates are fixed amounts for connecting voice and data devices to the statewide telecommunications network. Agencies pay the same monthly amount regardless of how much the network is used.
- 3) Interest and Administrative Surcharges. These rates are percentage amounts intended to recapture various overhead costs for interest and administrative expenses.
- 4) Forms and Special Services. These rates reflect the direct costs for equipment maintenance and for buying forms.

6.1 USAGE SENSITIVE RATES:

<u>SERVICE CATEGORY</u>	<u>RESOURCE DESCRIPTION</u>	<u>UNIT</u>	<u>UNIT CHARGE</u>
-----------------------------	---------------------------------	-------------	------------------------

Information Central Processing Units

BASE CPU RATE

Day Rate	Hour	\$571 ★
Night/Weekend Rate	Hour	\$491 ★

Because the various CPUs in DISC run at different speeds it is necessary to multiply the base rate by a speed factor to arrive at the CPU cost for a job.

CPU SPEED FACTORS

IBM 3084	1.00
Amdahl 5880	1.43
Amdahl 5890-600E	1.72

Discount for Night Work and Weekend Work:

Night work is in effect from 17:00 hours until 08:00 hours and weekend work from 17:00 hours Friday until 08:00 hours Monday. The discount for work submitted for night and weekend processing is 14%.

SERVICE CATEGORY	RESOURCE DESCRIPTION	UNIT	UNIT CHARGE
------------------	----------------------	------	-------------

UNISYS CPU

The primary unit of billing is the standard unit of processing (SUP) which is a composite of all resources used by a job during execution. With final conversion of KFIS systems, the Unisys system is expected to be discontinued in FY 1992.

Mapper	SUP	\$130.00	♣
Demand Processing	SUP	138.00	♣
Preferred Batch	SUP	230.00	♣
Routine Batch	SUP	115.00	♣

ON-LINE SERVICES

E1/Supra CICS	Transaction CPU Hour	\$.01	See CPU Rates
---------------	----------------------	--------	---------------

TECHNICAL SERVICES

Moves, Adds, & Changes	Hourly	\$46.00	
Professional Services	Hourly	46.00	
Contract Tech. Services	Hourly	75.00	
Dispatch Charge	One-Time	135.00	

ROSCOE

CPU	Hour	\$571.00	
Connect	Hour	.94	

PRINTING

Local System Printing	1000 Lines	\$1.40	★
-----------------------	------------	--------	---

TAPE

Tape Rent	Reel/Cart Mo.	\$1.00	
Tape Occupancy	Hour	60.00	★

DISK STORAGE

IBM DISK Storage	1,000 Track Hrs.	\$0.05	
------------------	------------------	--------	--

SERVICE CATEGORY	RESOURCE DESCRIPTION	FIRST MIN	ADD'L MIN
------------------	----------------------	-----------	-----------

KANS-A-N	Minute		
	Day	8:00 am - 5:00 pm	.25 .20
	Evening	5:01 pm - 11:00 pm	.15 .10
	Night & Weekends	11:01 pm - 7:59 am	.15 .10

<u>SERVICE CATEGORY</u>	<u>RESOURCE DESCRIPTION</u>	<u>UNIT</u>	<u>UNIT CHARGE</u>
-----------------------------	---------------------------------	-------------	------------------------

Operator Assistance	All calls handled by KANS-A-N Operators		.25/call
----------------------------	---	--	----------

Information Services Network

	Per 1,000 Packets Transmitted		.28
--	-------------------------------	--	-----

6.2 NETWORK CONNECTION: The rates reflect costs for all hardware and software as well as the costs for operating the network. In order to connect to the network, users are charged a "transport" rate. In addition, a mainframe connect rate will be charged to all users provided access to DISC's mainframes.

Rates for voice and data service include costs of software and hardware as well as network operations costs. Voice service rates are based upon the number of telephone lines provided to agencies. Data service rates are based upon the number of data terminal addresses assigned to an agency. Devices that use the network only are charged \$20.00 per month transport rate. Devices that use the network and attach to DISC mainframes are charged both the transport rate and the mainframe connect rate of \$11.00 for a total of \$31.00. Customers should note a new rate for dedicated data circuits provided on the statewide backbone network. This charge will be \$2.00/mile per month for such circuits.

NETWORK CONNECTION

<u>SERVICE CATEGORY</u>	<u>RESOURCE DESCRIPTION</u>	<u>UNIT</u>	<u>UNIT CHARGE</u>
-----------------------------	---------------------------------	-------------	------------------------

Data Service

	Terminal/PC Connect to Network	Connect Mo.	\$20.00 *
	Terminal/PC Connect to Mainframe	Connect Mo.	\$11.00 *

Voice Service

	Single Line	Line Month	\$30.00 *
	Multi-Line	Line Month	\$40.00 *

Voice Mail	User Mailbox	Month	\$15.00 *
-------------------	--------------	-------	-----------

Building Wiring

	Premise Wiring	Connect Mo.	\$4.00 *
--	----------------	-------------	----------

Maintenance

	Maintenance Single Line Set	Month	\$1.50
	Maintenance Proprietary Set	Month	\$3.00
	Maintenance Multi-Line Set	Month	\$3.00

Data Circuits

	Vendor Data Circuits	Month	At Cost
	Backbone Network Circuits	Month	\$2.00/mile

6.3 INTEREST AND ADMINISTRATIVE SURCHARGES:

To allow agencies to comply with federal funding requirements, DISC assesses interest charges as a surcharge on the costs of providing services. It should be noted that this is not an actual interest rate, but an assessment to recover all interest paid by DISC. This permits agencies to identify charges that are ineligible for payment with federal funding. You should not use federal funds to pay these surcharges. Symbols appearing beside surcharges below are used to identify the rates in this PPM to which the surcharge applies.

♣	Unisys (Job Processing)	SUPS	1.80%
★	IBM (Job Processing)	CPU, Tape, & Printing	4.00%
*	Telecommunications	Data Service, Voice Service & Building Wiring	2.50%
	Administrative Surcharge	All Rated Services	2.00%

6.4 EQUIPMENT, FORMS AND SPECIAL SERVICES:

<u>SERVICE CATEGORY</u>	<u>RESOURCE DESCRIPTION</u>	<u>UNIT CHARGE</u>
-----------------------------	---------------------------------	------------------------

MODEMS (Monthly Lease)

Short Haul	\$25.00
4800 BPS	65.00
9600 BPS	95.00
14,400 BPS	135.00
Data Service Unit	40.00

MODEM HANDLING (One-time charge to strap and ship equipment)

Short Haul	\$20.50
4800 BPS	87.85
9600 BPS	110.85
14,400 BPS	125.85
Data Service Unit	150.85

FORMS (units are all by sheet)

116	14 7/8 X 11 1 ply paper	\$0.007
126	14 7/8 X 11 2 ply paper	0.017
136	14 7/8 X 11 3 ply paper	0.026
216	8 1/2 X 11 1 ply paper	0.005
226	8 1/2 X 11 2 ply paper	0.011
2009	Gummed labels 4 by 1 7/16(1-up)	0.025
2096	9 1/2 X 11 plain white paper	0.005
2097	9 1/2 X 11 2 ply plain white paper	0.015

MICROFICHE SERVICE:

Computer output microfiche service is provided through the Kansas Division of Employment.

\$1.888 per original fiche.

\$0.146 per duplicate fiche.

\$2.00 per magnetic tape load to computer output microfiche.

7.0 CANCELLATION: This PPM cancels PPM 2200.06 dated 08/10/89.

8.0 CONTACT PERSON: Don Heiman, Assistant Director
Administrative Services, (KANS-A-N 913-296-2731)