

Approved March 22, 1990  
Date

MINUTES OF THE SENATE COMMITTEE ON WAYS AND MEANS

The meeting was called to order by SENATOR AUGUST "GUS" BOGINA at  
Chairperson

11:10 a.m./p.m. on MARCH 5, 19 90 room 123-S of the Capitol.

All members were present except:

Committee staff present:

Research Department: Diane Duffy, Leah Robinson  
Revisor: Norm Furse, Gordon Self  
Committee Staff: Judy Bromich, Administrative Assistant  
Ronda Miller, Committee Secretary

Conferees appearing before the committee:

Joseph Harkins, Director of Kansas Water Office and Chairman of Geographical Information System (GIS) Policy Board  
Dr. Lee Gerhard, Director of Kansas Geological Survey  
Dr. Gary Hulett, Special Assistant, Governor's Office

INTRODUCTION OF BILLS

Senator Johnston moved, Senator Kerr seconded, the introduction of bill draft 9 RS 2744 - AN ACT relating to property taxation; providing for the exemption of certain oil and gas properties therefrom. It was stated that this legislation is identical to HB 2981. The motion carried.

GEOGRAPHICAL INFORMATION SYSTEM (GIS)

Mr. Joseph Harkins provided background material on GIS for the Committee. He stated that GIS is not a monolithic computer based data-management system, but consists of 2 components - geographically coded data bases which, when married with existing software systems, produce geographically coded maps, and data files which provide ready access to information. He said that some local governments, state agencies and federal agencies which work with state government have this technology in-house.

Mr. Harkins stated that the Governor appointed a GIS Policy Board to insure compatibility and standardization of equipment with the introduction of the new GIS technology. The objectives of this board are outlined in Attachment 1. He said that the Board is looking at inexpensive linkages to accommodate the sharing of resources (Attachment 1-4), and noted that using DISC telecommunication capability to link resources would not be cost effective within the next 5 years. Mr. Harkins told the Committee that the reason GIS has risen to high visibility this legislative session is because of a concerted effort to manage the introduction of this technology in state government.

In answer to a question, Mr. Harkins told the Committee that every state has introduced this technology in some degree, but he knows of no other state that has introduced this technology on a decentralized basis with a multi-agency board managing its introduction. He stated that he would provide information from other states that have introduced this system.

Dr. Lee Gerhard provided material demonstrating automated computer mapping and its application in state government.

Dr. Gary Hulett told the Committee that Kansas needs to address the question of information resource management, and stated that information is enhanced if it is collected, stored, retrieved, analyzed, and shared effectively. He stated that it is difficult to put a cap on an absolute cost of developing the information system, but noted that the state can provide an estimate of

Unless specifically noted, the individual remarks recorded herein have not been transcribed verbatim. Individual remarks as reported herein have not been submitted to the individuals appearing before the committee for editing or corrections.



## CONTINUATION SHEET

MINUTES OF THE SENATE COMMITTEE ON WAYS AND MEANS  
 123-S 11:10 XX MARCH 5 90  
 room \_\_\_\_\_, Statehouse, at \_\_\_\_\_ a.m./p.m. on \_\_\_\_\_, 19\_\_

what it's willing to commit toward this end. He said that initial spending for the development of GIS would not be wasted if a commitment was not made to the entire expenditure.

Dr. Hulett stated that the Policy Board had surveyed various agencies to get a 5 year projection of what they would be requesting in terms of appropriations for GIS. This information is summarized in Attachment 2. He told the Committee that the Governor will be recommending an expenditure of \$5 million over the next 5 years for the development of GIS, and that the funding source would be existing dedicated funds or fee funds with minimal impact on SGF. In answer to a question, Dr. Hulett stated that there may be some academic budget requests for GIS in the future. Concern was expressed that the cost of the program, once implemented, would multiply.

In answer to a question, Dr. Hulett stated that the main users of GIS will be state agencies. He said that actual costs associated with accessibility will be recovered, but charges above that will not be made. In answer to a question, Dr. Hulett noted that the main funding source for the Governor's FY 91 recommendations would be the state water plan fund. He said that GIS relates to the water plan in that it allows for the development of preventive strategy in regard to natural resources.

SB 443 - Appropriations for FY 90, FY 91, FY 92, FY 93 and FY 94 capital improvements for various state agencies

Senator Harder reviewed the subcommittee report, Attachment 3. He noted that all of these funds are predicated on a 1.5 mill levy, and pointed out that \$8 million was appropriated to the Board of Regents for major maintenance.

Senator Harder moved, Senator Gaines seconded that Section 11 of the subcommittee report be amended to allow Emporia State University to issue bonds in the amount of \$400,000 for parking lot and street renovation. The bonds will be paid back through parking fees. The motion carried.

Senator Harder moved, Senator Gaines seconded that Section 16 be amended to include a proviso that any maintenance be reviewed by the Joint Committee on State Building Construction. The motion carried.

Concern was expressed regarding the appropriation of \$7.5 million from the SGF for a capital improvement at the Historical Society item during a difficult budgetary year. Senator Winter moved, Senator Johnston seconded that Section 8 be deleted from the subcommittee report. As a point of clarification, it was noted that this motion would repeal the authorization for the project. The motion failed on a show of hands.

As a point of clarification in item 4 of Section 13 of the subcommittee report, Senator Kerr moved, Senator Harder seconded that the Joint Committee on State Building Construction revisit the Law Enforcement Training Center--1B project in order to consider the project's proposed phasing and funding sources whether or not the project's omission was inadvertent or not. The motion carried.

Senator Harder moved, Senator Hayden seconded, adoption of the subcommittee report as amended. The motion carried.

Senator Winter moved, Senator Harder seconded, that SB 443 as amended be recommended favorable for passage. The motion carried.

Senator Gaines moved and Senator Winter seconded that the minutes of February 13 and 14 be approved. The motion carried.

The meeting was adjourned.







# ORGANIZATION OF EFFORTS

Kansas GIS Initiative

January 1990

- \* Many local, state and federal agencies are already using GIS technology. Examples include:
  - Kansas Geological Survey
  - Kansas Applied Remote Sensing
  - Kansas State University
  - Kansas Water Office
  - Division of Water Resources
  - Kansas Department of Health and Environment
  - Kansas Department of Transportation
  - U.S. Geological Survey
  - U.S. Soil Conservation Service
  - U.S. Environmental Protection Agency
  - Various County Governments
- \* Coordination of GIS development is needed to avoid redundancy in data collection and automation; to facilitate the use of uniform standards for data exchange; and to promote and ensure compatibility of software, hardware and data.
- \* The Governor appointed a GIS Policy Board to address policy issues and coordinate GIS development (Figure 1).
- \* The Policy Board formed a Technical Advisory Committee (TAC) to address technical issues and provide input to the Board. The TAC includes planning, standards and database subcommittees (Figure 2).
- \* Staff support for the Policy Board and TAC is being provided by the Division of Information Systems and Communications (DISC). The Policy Board will ensure that DISC, as a neutral nonuser agency, fulfills the coordinating role necessary in a statewide GIS network (Figure 3).
- \* The Policy Board has recommended that \$500,000 be applied to GIS database development in FY 1991, recommended that a full-time GIS administrator be hired, determined dataset acquisition priorities, reviewed state agencies' GIS-related budget requests for FY 1991, directed the TAC to pursue GIS data exchange standards as a high priority and will consider many important GIS issues in the months ahead.

SWAM  
March 5, 1990  
Attachment 1

## Kansas GIS Policy Board Members

Joseph F. Harkins, Kansas Water Office, Chairman  
 Dr. Lee Gerhard, Kansas Geological Survey  
 Dr. Stanley Grant, Dept. of Health and Environment  
 David L. Pope, Division of Water Resources  
     State Board of Agriculture  
 Kenneth Kern, State Conservation Commission  
 Keith Henley, Kansas Corporation Commission  
 Robert L. Meinen, Dept. of Wildlife and Parks  
 Dr. Edward A. Martinko, Kansas Biological Survey  
 Horace B. Edwards, Department of Transportation  
 Harland Priddle, Department of Commerce  
 Duane Nellis, Kansas State University  
     Department of Geography  
 Keith Lebbin, Groundwater Management District Assn.  
 Tom Huntzinger, U.S. Geological Survey  
 James N. Habiger, U.S. Soil Conservation Service  
 Gary Hulett, Governor's Office  
 Sherry Brown, Department of Administration  
 Mary Galligan, Legislative Research  
 Mark Hixon, Barton County Appraiser's Office  
 Brad Bryant, Secretary of State's Office  
 Ed Rolfs, Kansas Department of Revenue  
 Charles Warren, Kansas, Inc.  
 James V. Bush, Alternate, Kansas Department of  
     Transportation  
 Staff: Jim Parker and Kerry Wedel

Figure 1

## GIS Technical Advisory Committee Members

James Parker, Policy Board Staff, Co-Chairman  
 Kerry Wedel, Policy Board Staff, Co-Chairman  
 Randall Foster, Secretary of State  
 Brian Logan, Kansas Dept. of Transportation  
 Val Carter, Legislative Research  
 David Collins, Kansas Geological Survey  
 Loren Phillips, Ks. Dept. of Health and Environment  
 Darrel Eklund, Kansas Water Office  
 John Reh, U.S. Soil Conservation Service  
 Scott Stockwell, Kansas Corporation Commission  
 Claud Baker, U.S. Geological Survey  
 Tracy Streeter, State Conservation Commission  
 Gary Baker, Groundwater Management Districts Assoc.  
 Jerry Whistler, Kansas Biological Survey  
 Lloyd Stullken, Board of Agriculture  
 H.L. Seyler, Kansas State University, Dept. of Geography  
 Jim Kent, Dept. of Commerce  
 Tim Hensley, Dept. of Revenue  
 JoAnn Radenberg, R. & S. Digital Services  
 Michael Morrow, Dept. of Wildlife and Parks  
 Stephen Thompson, Kansas College of Technology

Figure 2

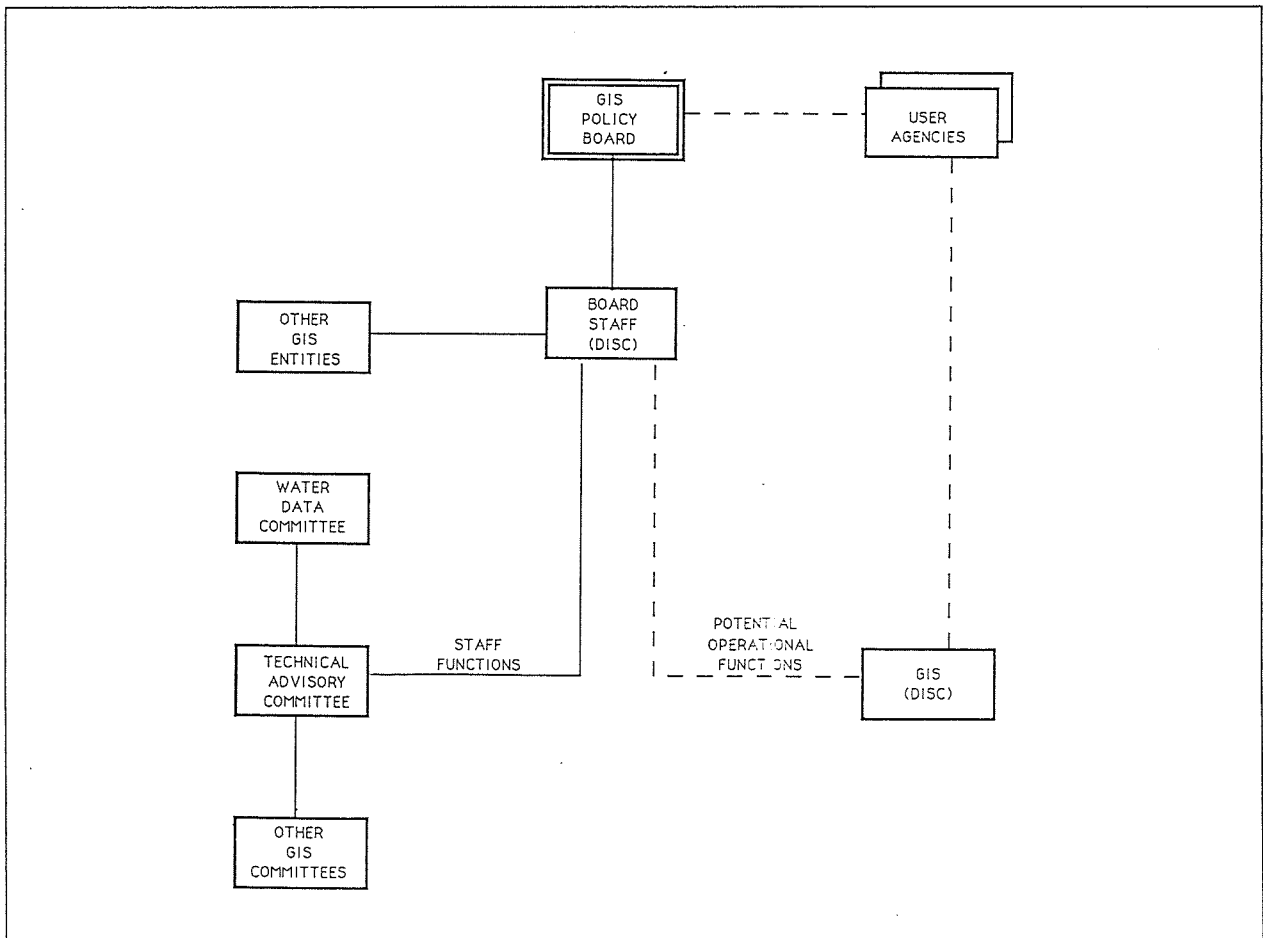


Figure 3



# COORDINATION OF DATABASE DEVELOPMENT



Kansas GIS Initiative

January 1990

- \* Database development is a fundamental and often the most costly element in the implementation of a geographic information system (GIS).
- \* Coordination among agencies avoids duplication of effort and unnecessary costs.
- \* Data exchange standards and interagency cooperation facilitate data sharing among users.
- \* Coordinated database development and data exchange standards are top priorities of the GIS Policy Board for FY 1991.
- \* The GIS Policy Board, Kansas Water Authority and the Governor recommend \$500,000 in FY 1991 to support water-related GIS database development. This level of support from the State Water Plan Fund is anticipated for the next several years as GIS databases are established. It is anticipated that lower levels of support will be needed for subsequent maintenance of these databases.
- \* Priority water-related GIS data needs to support implementation of the State Water Plan in FY 1991 are listed in Table 1. These data can also be utilized by other nonwater-related agencies for GIS applications.

**Table 1. Priority GIS Datasets - FY 1991**

<u>Name</u>	<u>Description</u>	<u>Source</u>
Land Base	Township/range lines, section corners, state and county boundaries, geodetic survey data	Kansas Geological Survey
Hydrology	Surface streams/water bodies	U.S. Geological Survey
Land Use/Cover	Land use polygons by cover type	Satellite Data
Soils	Soil survey soil polygons	U.S. Soil Conservation Service
Geology	Depth/location of strata, aquifers	
Population	Map features for census data	U.S. Census Bureau
Public Water Supplies and Effluent Discharge	Site locations	Kansas Department of Health and Environment
Contamination Sites	Site locations	Kansas Department of Health and Environment
Transportation and Utilities	Highways, roads, railroads, airports, misc. utilities, etc.	U.S. Geological Survey
Water Rights	Points of diversion for water appropriations	Division of Water Resources
Surface Elevations	Elevation data of land surface	U.S. Geological Survey
Underground Injection Wells	Site locations	Kansas Department of Health and Environment
Wastewater Discharge	Site locations	Kansas Department of Health and Environment
Watershed Districts	Boundaries of watershed districts	Division of Water Resources
Property Ownership	Land parcel boundaries	Kansas Department of Revenue

# ENSURING COMPATIBILITY OF SOFTWARE, HARDWARE AND DATA



Kansas GIS Initiative

January 1990

- \* The Governor appointed a Policy Board to address policy issues and coordinate GIS development.
- \* The Policy Board recommended that the State Water Plan Fund be utilized to fund \$500,000 for GIS database acquisition and development during FY 1991. The applicable datasets have been prioritized by the Board.
- \* The experiences of many GIS users indicate that database costs are the major portion of their GIS budgets.
- \* GIS software selection must be based upon user needs.
- \* GIS hardware selection should be based upon requirements of the selected software.
- \* GIS software products have become increasingly more sophisticated and flexible. Various products now run on personal computers, workstations, minicomputers and/or mainframe computers. The computer industry is continually increasing the power and speed of the hardware.
- \* Some of the criteria in selecting GIS software include the ability to locate needed database information quickly, the ability to distribute data to multiple users while maintaining database integrity and the ability to facilitate the exchange of data between systems.
- \* Existing GIS software offers a wide range of capabilities relating to acquisition, analysis, management, display and reporting of information.
- \* The Policy Board and Technical Advisory Committee will ensure software and hardware compatibility via state contracts, acquisition guidelines, dissemination of technical information and interagency communications.





# SHARING RESOURCES

Kansas GIS Initiative

January 1990

\* Government agencies in Kansas share resources for utilization of geographic information systems (GIS) technology. Examples:

- Cooperative agreements for GIS access and technical support between the U.S. Geological Survey and the Kansas Water Office and the Division of Water Resources.
- Access by the Kansas Department of Health and Environment to the U.S. Environmental Protection Agency geographic information system.
- Use of the Kansas Geological Survey's Digital Cartographic Database by state agencies.

\* Agencies cooperate in efforts to share resources for GIS-related data collection and management. Example:

- Water well tagging process under development by the Kansas Water Data Committee.

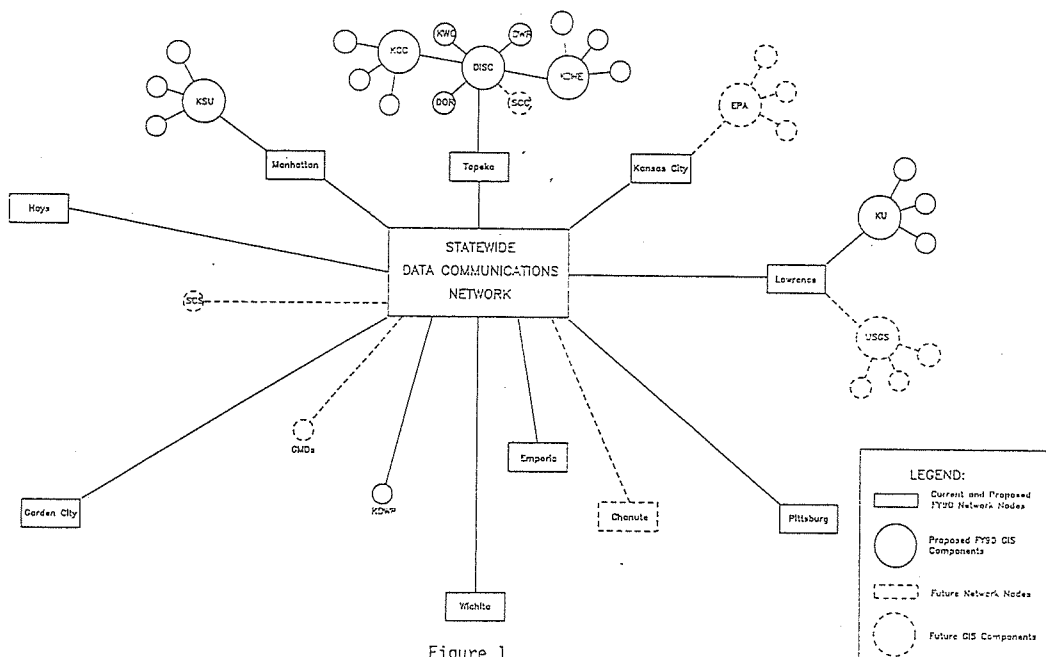
\* Coordinated planning by the GIS Policy Board and the GIS Technical Advisory Committee promotes sharing of data.

- Coordinated database development to avoid unnecessary duplication of effort and costs.
- Sharing of information regarding agencies' existing databases, systems and future development plans.
- Sharing of data through interagency cooperation.
- Development and utilization of data exchange standards to facilitate data sharing.

\* Statewide GIS network proposed by the Kansas Water Data Committee (Figure 1).

- Link agencies through statewide data communications network for geographic data access and transfer.
- The GIS Policy Board and the GIS Technical Advisory Committee will address network development needs in context with agencies' GIS implementation.

Conceptual Geographic Information Network  
Kansas Data Communications Network





Comments - GIS Policy Board Figures for  
FY 1991 Through FY 1995 Estimated Expenditures

1. Figures only include state Policy Board member agencies:
  - A. Other state agencies, such as Historical Society, SRS, etc. are not represented.
  - B. With regard to the regents institutions, only KU and KSU are represented on the Board. Future plans for GIS development in other regents institutions are not reflected. In addition, figures presented for KU and KSU do not reflect all departments within these institutions.
2. The figures represent the following:
  - A. Personnel - salaries and fringe benefits.
  - B. Database acquisition/development - object code 400.
  - C. Operating expenses - all other GIS-related costs (hardware, software, maintenance, office equipment, supplies, rent, training, travel, etc.)
3. Each agency is prepared to defend and support its figures.
4. This assumes no central GIS facility in DISC.
5. Proposed funding sources have not been specified.

SWAM  
March 5, 1990  
Attachment 2

ALL POLICY BOARD AGENCIES - FY 1991

<u>AGENCY</u>	<u>PERSONNEL</u>	<u>OPERATING EXPENSES</u>	<u>DATABASE ACQUISITION/ DEVELOPMENT</u>	<u>TOTAL</u>
D of A (DISC)	48,800	0	500,000	548,800
Agri (Water Resources)	61,623	126,604	0	188,227
Commerce	0	0	0	0
Conservation Commission	0	0	0	0
Corporation Commission	0	168,995	40,000	208,995
Health & Environment	0	0	0	0
Kansas, Inc.	0	0	0	0
KSU	0	0	0	0
Kansas Geological Survey	0	0	0	0
Kansas Biological Survey	0	0	0	0
Legislative Research	0	0	0	0
Revenue	0	0	0	0
Secretary of State	0	0	0	0
Transportation	0	5,000	0	5,000
Kansas Water Office	0	5,000	0	5,000
Wildlife & Parks	0	34,280	0	34,280
TOTALS	110,423	339,879	540,000	990,302



ALL POLICY BOARD AGENCIES - FY 1992

<u>AGENCY</u>	<u>PERSONNEL</u>	<u>OPERATING EXPENSES</u>	<u>DATABASE ACQUISITION/ DEVELOPMENT</u>	<u>TOTAL</u>
D of A (DISC)	51,241	0	500,000	551,241
Agri (Water Resources)	63,100	131,061	0	194,161
Commerce	0	0	0	0
Conservation Commission	0	0	0	0
Corporation Commission	0	102,000	0	102,000
Health & Environment	54,596	88,124	0	142,720
Kansas, Inc.	0	0	0	0
KSU	86,573	133,800	106,000	326,373
Kansas Geological Survey	109,000	72,000	0	181,000
Kansas Biological Survey	93,150	65,094	0	158,244
Legislative Research	0	0	0	0
Revenue	0	57,035	0	57,035
Secretary of State	0	0	0	0
Transportation	0	0	0	0
Kansas Water Office	0	52,470	0	52,470
Wildlife & Parks	31,500	61,460	11,000	103,960
TOTALS	489,160	763,044	617,000	1,869,204

ALL POLICY BOARD AGENCIES - FY 1993

<u>AGENCY</u>	<u>PERSONNEL</u>	<u>OPERATING EXPENSES</u>	<u>DATABASE ACQUISITION/ DEVELOPMENT</u>	<u>TOTAL</u>
D of A (DISC)	53,803	0	500,000	553,803
Agri (Water Resources)	64,621	54,861	0	119,482
Commerce	0	0	0	0
Conservation Commission	0	30,000	0	30,000
Corporation Commission	0	144,000	0	144,000
Health & Environment	57,326	24,078	0	81,404
Kansas, Inc.	0	0	0	0
KSU	91,690	24,200	7,000	122,890
Kansas Geological Survey	114,450	7,350	0	121,800
Kansas Biological Survey	95,945	17,894	0	113,839
Legislative Research	0	0	0	0
Revenue	0	44,550	0	44,550
Secretary of State	0	0	0	0
Transportation	0	0	1,245,000	1,245,000
Kansas Water Office	0	44,970	0	44,970
Wildlife & Parks	32,500	29,000	0	61,500
TOTALS	510,335	420,903	1,752,000	2,683,238



ALL POLICY BOARD AGENCIES - FY 1994

<u>AGENCY</u>	<u>PERSONNEL</u>	<u>OPERATING EXPENSES</u>	<u>DATABASE ACQUISITION/ DEVELOPMENT</u>	<u>TOTAL</u>
D of A (DISC)	56,494	0	300,000	356,494
Agri (Water Resources)	66,087	39,861	0	105,948
Commerce	0	0	0	0
Conservation Commission	0	5,000	0	5,000
Corporation Commission	0	93,000	0	93,000
Health & Environment	60,192	24,782	0	84,974
Kansas, Inc.	0	0	0	0
KSU	95,080	35,300	7,000	137,380
Kansas Geological Survey	120,173	7,718	0	127,891
Kansas Biological Survey	98,820	15,894	0	114,714
Legislative Research	0	0	0	0
Revenue	0	10,433	0	10,433
Secretary of State	0	0	0	0
Transportation	0	0	0	0
Kansas Water Office	0	44,970	0	44,970
Wildlife & Parks	33,500	1,500	0	35,000
TOTALS	530,346	278,458	307,000	1,115,804

ALL POLICY BOARD AGENCIES - FY 1995

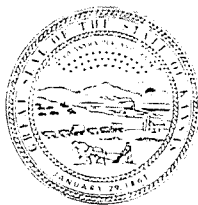
<u>AGENCY</u>	<u>PERSONNEL</u>	<u>OPERATING EXPENSES</u>	<u>DATABASE ACQUISITION/ DEVELOPMENT</u>	<u>TOTAL</u>
D of A (DISC)	59,318	0	300,000	359,318
Agri (Water Resources)	67,661	39,861	0	107,522
Commerce	0	0	0	0
Conservation Commission	0	5,000	0	5,000
Corporation Commission	0	56,500	0	56,500
Health & Environment	63,202	25,520	0	88,722
Kansas, Inc.	0	0	0	0
KSU	98,616	32,300	8,000	138,916
Kansas Geological Survey	126,182	8,104	0	134,286
Kansas Biological Survey	101,785	23,094	0	124,879
Legislative Research	0	0	0	0
Revenue	0	10,954	0	10,954
Secretary of State	0	0	0	0
Transportation	0	0	0	0
Kansas Water Office	0	47,442	0	47,442
Wildlife & Parks	34,500	1,500	0	36,000
TOTALS	551,264	250,275	308,000	1,109,539



ALL POLICY BOARD AGENCIES - FY 1991 THROUGH FY 1995

<u>AGENCY</u>	<u>PERSONNEL</u>	<u>OPERATING EXPENSES</u>	<u>DATABASE ACQUISITION/ DEVELOPMENT</u>	<u>TOTAL</u>
D of A (DISC)	269,656	0	2,100,000	2,369,656
Agri (Water Resources)	323,092	392,248	0	715,340
Commerce	0	0	0	0
Conservation Commission	0	40,000	0	40,000
Corporation Commission	0	564,495	40,000	604,495
Health & Environment	235,316	162,504	0	397,820
Kansas, Inc.	0	0	0	0
KSU	371,959	225,600	128,000	725,559
Kansas Geological Survey	469,805	95,172	0	564,977
Kansas Biological Survey	389,700	121,976	0	511,676
Legislative Research	0	0	0	0
Revenue	0	122,972	0	122,972
Secretary of State	0	0	0	0
Transportation	0	5,000	1,245,000	1,250,000
Kansas Water Office	0	194,852	0	194,852
Wildlife & Parks	132,000	127,740	11,000	270,740
TOTALS	2,191,528	2,052,559	3,524,000	7,768,087

STATE OF KANSAS



OFFICE OF THE GOVERNOR

State Capitol  
Topeka 66612-1590

(913) 296-3232  
1-800-432-2487  
TDD# 1-800-992-0152  
FAX# (913) 296-7973

Mike Hayden Governor

5 MARCH 1990  
TESTIMONY PRESENTED  
TO  
SENATE WAYS AND MEANS COMMITTEE

As we enter the 1990's, it is obvious that there is a renewed environmental concern throughout Kansas and across the nation. Three years ago the Governor began a major effort to protect and conserve the natural resources of Kansas and with cooperation and support from the Legislature considerable progress has been made.

However, we still face major challenges in the conservation of water and other natural resources, in the clean-up of contamination and in the prevention of additional pollution. To meet these challenges and to insure that we leave an adequate legacy for future Kansans, it is essential that we continue the efforts that have been started.

For the first time in the state's history funding is available for implementing the State Water Plan. Although the Water Plan was established in 1983, it had been, for all practical purposes, unfunded until the Governor recommended and the Legislature approved more than \$4 million for State Water Plan implementation in FY 1989. Again, in FY 1990, the Governor recommended nearly \$10.5 million for Water Plan projects, including \$6.1 million from the State General Fund and \$3.05 million from EDIF. The Governor further identified additional Water Plan projects that he would recommend if the Legislature established a long-term source of funding, which it did with the passage of SB 398. The total funding for Water Plan projects in FY 1990 is \$15,530,200.

Water plan projects and programs supported by these FY 1990 appropriations included:

- o Environmental protection grants to counties;
- o Development of a non-point source pollution control program,
- o Clean-up efforts on contaminated sites in the state;
- o Major enhancements of land-treatment programs; and
- o Restoration projects at Cheyenne Bottoms.

The Governor is committed to continuing the progress that has been made in the implementation of the Kansas Water Plan and has recommended a \$16.5 million Water Plan package for FY 1991, including \$15,090,423 from the State Water Plan Fund.

Specific recommendations for FY 1991 include:

- o Continued funding for preventive land treatments through the State Conservation Commission;
- o Increased water conservation planning and coordination through the Division of Water Resources;
- o The construction of multi-purpose small lakes at Banner Creek, in Jackson County, and Bone Creek, in Crawford and Cherokee counties;
- o Continued funding of the Local Environmental Protection Grants program;
- o Continued grants to local Conservation Districts for non-point-source pollution control;
- o Continued funding for remediation of contaminated sites in the State;
- o Continued development of Hillsdale Reservoir in Miami County;
- o Continued renovation of Cheyenne Bottoms; and
- o Several research projects that will provide a better understanding of the quality and quantity of our water resources, particularly in the area of stream-aquifer interactions.



The Governor's water plan recommendations for FY 1991 include initial funding for development of a Kansas Geographic Information System (GIS). The Governor appointed a GIS Policy Board in 1989, which has made recommendations for inter-agency coordination and geographic database acquisitions for FY 1991. The development of a geographic based information management system is critical if the state is to be able to efficiently store, retrieve, analyze and share information. Information management will improve decision-making capability in Kansas and will minimize costly remedial efforts in the future.

The Governor is committed to moving Kansas to the forefront in geographic information management and will be recommending expenditures of \$5 million over the next five years to accomplish that goal.

The Governor's FY 1991 Water Plan recommendations are the result of an intensive interagency process involving the Kansas Water Authority, Basin Advisory Committees and State water resource agencies. The original request from the Kansas Water Authority listed about \$27 million in water projects for FY 1991. The Governor identified \$16,498,831 in priority items and has submitted these to the Legislature. Of the total amount recommended, \$15,090,423 is from the State Water Plan Fund; the remainder is from the State General Fund and fee funds.

In summary, the Governor has recommended a State Water Plan package that will continue and enhance the important efforts that the State has begun. These initiatives will enable Kansas to not only restore the Kansas environment where degradation has already taken place, but more importantly will establish preventive measures that will insure the integrity of our natural resources for future Kansans.

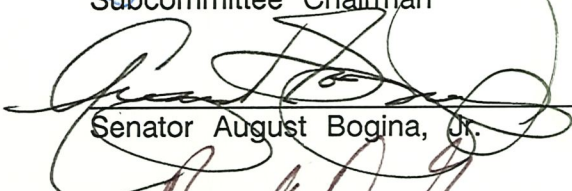
Gary K. Hulett  
Special Assistant for  
Health & Environment

SUBCOMMITTEE REPORT ON  
SENATE BILL NO. 443

FY 1990, FY 1991, FY 1992, and FY 1993  
Capital Improvement Projects

- Section 2 -- State Board of Agriculture
- Section 3 -- State Fair Board
- Section 4 -- Department of Wildlife and Parks
- Section 5 -- School for the Visually Handicapped
- Section 6 -- School for the Deaf
- Section 7 -- State Historical Society
- Section 8 -- State Historical Society
- Section 9 -- Fort Hays State University
- Section 10 -- Kansas State University
- Section 11 -- Emporia State University
- Section 12 -- Pittsburg State University
- Section 13 -- University of Kansas
- Section 14 -- University of Kansas Medical Center
- Section 15 -- Wichita State University
- Section 16 -- State Board of Regents

  
\_\_\_\_\_  
Senator Joseph C. Harder  
Subcommittee Chairman

  
\_\_\_\_\_  
Senator August Bogina, Jr.

  
\_\_\_\_\_  
Senator Frank D. Gaines

SWAM  
March 5, 1990  
Attachment 3

**SUBCOMMITTEE REPORT  
SENATE BILL NO. 443**

**Section 2 – State Board of Agriculture**

**Agency Request/Governor's Recommendation**

The agency requests \$60,746 from the State General Fund in FY 1990 to replace the vacuum pump (\$17,184) and air compressor (\$43,562) systems of the agency's Topeka laboratory. Both projects had previously been approved by the 1988 Legislature, but the initial cost estimates proved to be inadequate. The agency also requests \$65,990 from the State General Fund in FY 1991 to replace the lighting fixtures (\$42,609) and ceiling (\$20,394) and install an additional water closet (\$2,987) in the Topeka laboratory.

The Governor concurs with the agency's request for FY 1990 supplemental funding of \$60,746. For FY 1991 the Governor recommends State General Fund financing of \$45,596 for replacement of the lighting fixtures (\$42,609) and installation of a water closet (\$2,987).

**Senate Subcommittee Recommendation**

The Senate Subcommittee concurs with the Governor's recommendation, with the following adjustments:

1. Add \$20,394 from the State General Fund in FY 1991 to replace the ceiling at the Topeka Laboratory. The Subcommittee notes that the existing ceiling is in poor condition and that it will be more cost efficient to replace the ceiling at the same time as the lighting fixtures.

**Section 3 – State Fair Board**

**Agency Request/Governor's Recommendation**

The agency requests \$20,027 in FY 1990 to reimburse the State Fair Capital Improvements Fund for costs involved with repairing the grandstand roof which was damaged in a windstorm on March 26, 1989. In addition, the agency requests State Fair Capital Improvements Fund expenditures of \$97,500 in FY 1991 for special maintenance of fairground facilities. The agency also requests \$116,109 in FY 1991 from the State Fair Capital Improvement Fund for the second of ten annual installments to repay an \$840,000 bond issuance through the Kansas Development Finance Authority to complete the renovation of the State Fair Grandstand.

The Governor recommends expenditures of \$130,000 (from the State Fair Capital Improvement Fund) for special maintenance of fairground facilities in FY 1991, an increase of \$32,500 from the agency request. The Governor also concurs with the agency request of \$116,109 (from the State Fair Capital Improvement Fund) for the bond repayment in FY 1991.



### Senate Subcommittee Recommendation

The Senate Subcommittee concurs with the Governor's recommendation, with the following adjustments:

1. As a technical adjustment, appropriate the funds associated with the bonds issued for the grandstand renovation.

### Section 4 – Department of Wildlife and Parks

#### Agency Request/Governor's Recommendation

The agency requests \$8,250,107 for capital improvements, including \$933,624 from the State General Fund, \$1,021,837 from the Wildlife Fee Fund, \$2,811,730 from the State Water Fund, \$1,250,000 from the EDIF, \$1,200,000 from the Highway Fund, and \$129,099 from other funding sources for 40 capital improvement projects in FY 1991. State Water Plan financing is requested for the renovation of Cheyenne Bottoms (\$1,500,000) and the phased development of Hillsdale State Park (\$1,311,730). EDIF funding is requested for the Recreational Access Program (\$1,250,000), Ford County Lake renovation (\$240,000), and partial planning money for the design of conservation education centers (\$105,000).

The Governor recommends \$5,488,733, including \$130,000 from the State General Fund, \$1,078,409 from the Wildlife Fee Fund, \$2,811,730 from the State Water Fund, \$1,250,000 from the EDIF, and \$218,594 from other funds for 14 capital improvement projects in FY 1991. State General Fund financing is recommended for partial land acquisition financing. Water Plan financing is recommended for Cheyenne Bottoms (\$1,500,000) and Hillsdale State Park (\$1,311,730). These two projects are identified in the Governor's recommendation as being financed from the State General Fund resources of the Water Plan Fund and are identified as General Fund expenditures. EDIF funding is recommended for the Recreational Access Program (\$1,250,000), while the Ford County renovation has recommended funding from the Wildlife Fee Fund (\$180,000). No funding is recommended for the design of conservation education centers.

#### Senate Subcommittee Recommendation

The Senate Subcommittee concurs with the Governor's recommendation, with the following adjustments:

1. Reduce EDIF financing in FY 1991 by \$1,000,000 to provide \$250,000 for an Economic Development Special Projects Fund as recommended by the Senate Subcommittee on the Department of Wildlife and Parks.
2. Revise the list of projects reappropriated to FY 1991 as requested by the agency.

## Section 5 – School for the Visually Handicapped

### Agency Request/Governor's Recommendation

The agency requests \$353,447 from the State Institutions Building Fund (SIBF) in FY 1991 for eight capital improvement projects including major maintenance (\$50,000), three roof replacement projects (\$146,447), asbestos removal (\$100,000), tuckpointing and waterproofing two buildings (\$25,000), pavement repairs and replacements (\$16,000), and pool repairs (\$16,000).

The Governor recommends \$112,600 in FY 1991 from the SIBF for rehabilitation and repair projects (\$50,000), tuckpointing and waterproofing two buildings (\$25,000), and roof replacement for the Johnson building (\$37,600).

### Senate Subcommittee Recommendation

The Senate Subcommittee concurs with the Governor's recommendation.

## Section 6 – School for the Deaf

### Agency Request/Governor's Recommendation

The agency requests \$1,209,000 from the SIBF in FY 1991 for seven capital improvement projects, including major maintenance (\$50,000), electrical system improvements (\$38,000), asbestos removal (\$40,000), telephone system improvements (\$50,000), \$261,000 for the first year of a three-year \$5.4 million project to replace Emery Hall, \$250,000 for removal of architectural barriers in Roth Hall, and \$340,000 to renovate the old vocational school for use as a programmatic building.

The Governor recommends \$50,000 from the SIBF for rehabilitation and repair projects in FY 1991.

### Senate Subcommittee Recommendation

The Senate Subcommittee concurs with the Governor's recommendation.

## Section 7 – State Historical Society

### Agency Request/Governor's Recommendation

The agency requests \$3,988,993 from the State General Fund in FY 1991 for additional storage space at the previously approved new Center for Historical

Research (\$3,342,052), \$547,932 for preservation, restoration, and development projects at the state's historic properties, \$16,550 of electrical rewiring at the Kansas Museum of History, and \$7,079 for entrance drive repairs at the museum.

The Governor recommends \$61,550 from the State General Fund in FY 1991 for rehabilitation and repair projects (\$25,000), electrical rewiring at the museum (\$16,550), and access road improvements at Pawnee Rock (\$20,000).

#### **Senate Subcommittee Recommendation**

The Senate Subcommittee concurs with the Governor's recommendation, with the following adjustments:

1. Add language to clarify that the Pawnee Rock project also includes site improvements.

### **Section 8 – State Historical Society**

#### **Agency Request/Governor's Recommendation**

The Governor recommends that the \$7,528,000 previously appropriated for a new Center for Historical Research be modified by shifting \$4,488,000 from FY 1990 to FY 1991 and \$3,040,000 from FY 1991 to FY 1992.

#### **Senate Subcommittee Recommendation**

The Senate Subcommittee concurs with the Governor's recommendation.

### **Section 9 – Fort Hays State University**

#### **Agency Request/Governor's Recommendation**

The agency requests \$325,000 from the Educational Building Fund (EBF) in FY 1991 for the first year of a three-year \$3.25 million renovation of Picken Hall. The agency also requests \$75,000 from special revenue funds for parking lot improvements.

The Governor recommends \$75,000 from special revenue funds for parking lot improvements in FY 1991.

#### **Senate Subcommittee Recommendation**

The Senate Subcommittee concurs with the Governor's recommendation.

## Section 10 – Kansas State University

### Agency Request/Governor's Recommendation

The agency requests the following new appropriations for FY 1991: \$1,000,000 from parking fees for parking lot improvements, \$3,500,000 from dormitory fees for dormitory maintenance and repair, \$340,000 from the EBF for handicapped accessibility improvements to Fairchild Hall, \$143,400 from the EBF for fire and life safety improvements, and \$2,500,000 from federal funds for the second year of the Plant Sciences Phase IIB project. The agency also requests \$12,052,000 from the EBF for multi-year financing for the Plant Sciences Phase IIA project. Multi-year financing is requested at \$500,000 for final planning in FY 1991 and then construction funding in FY 1992 (\$2,500,000), FY 1993 (\$5,000,000), and FY 1994 (\$4,052,000).

The Governor concurs with the agency's FY 1991 requests for parking lot improvements (\$1,000,000) and dormitory maintenance and repair (\$3,500,000) and recommends \$500,000 from the State General Fund for final planning of Plant Sciences Phase IIA.

### Senate Subcommittee Recommendation

The Senate Subcommittee concurs with the recommendations of the Governor, with the following adjustments:

1. Add \$340,000 from the EBF in FY 1991 for handicapped accessibility improvements as recommended by the Joint Committee on State Building Construction.
2. Add \$500,000 from the State General Fund in FY 1991 for final planning of the Plant Sciences Phase IIA project as recommended by the Governor in Governor's Budget Amendment No. 1 and the Joint Committee on State Building Construction.
3. The Subcommittee recommends that the Joint Committee on State Building Construction review the latest information on the Plant Sciences project and consider if the state should make a commitment for a multi-year appropriation for the project.

## Section 11 – Emporia State University

### Agency Request/Governor's Recommendation

The agency requests for FY 1991 include: \$41,500 from parking fees for parking lot maintenance, \$225,000 from the EBF for reroofing projects, and \$1,679,000 from the EBF to complete the renovation of the first floor of Cremer Hall. The agency also requests a multi-year appropriation from the EBF totaling \$6,703,300 for the renovation of Plumb Hall. Multi-year financing requested includes final planning in FY



1991 (\$450,000) and construction funding in FY 1992 (\$2,950,000) and FY 1993 (\$3,303,300).

The Governor concurs with the agency's FY 1991 requests for parking lot maintenance (\$41,500) and Cremer Hall (\$1,679,000) and recommends a total of \$6,703,300 from the EBF for Plumb Hall in FY 1992 (\$450,000), FY 1993 (\$2,950,000), and FY 1994 (\$3,303,300).

#### Senate Subcommittee Recommendation

The Senate Subcommittee concurs with the Governor's recommendation, with the following adjustments:

1. Shift EBF financing for the Plumb Hall project to \$450,000 in FY 1991, \$2,885,252 in FY 1992, and \$3,368,048 in FY 1993 as recommended by the Joint Committee on State Building Construction.

### Section 12 – Pittsburg State University

#### Agency Request/Governor's Recommendation

The agency's requests for FY 1991 include: \$90,000 from student center fees for improvements to the Student Center, \$10,000 from student center fees for an engineering study of the Student Center HVAC system and related components, \$96,500 from student housing fees to replace the roof on the Tanner Hall Complex, \$30,000 from student health fees to replace the roof on the Student Health Center, \$169,500 from the EBF for the first year of a multi-year request to construct a warehouse maintenance facility (FY 1992 funding is also requested at \$672,500 from the EBF), \$186,300 from the EBF for phase II of a remodeling project for Porter Hall, \$150,000 from the EBF for asbestos abatement, \$120,000 from the EBF for phase II of a steam line replacement project, and \$656,000 from the EBF for restoration and repair of the Connie Smith Stadium.

The Governor concurs with the agency's FY 1991 requests for Student Center improvements (\$90,000), the Student Center study (\$10,000), and reroofing projects (\$126,500).

#### Senate Subcommittee Recommendation

The Senate Subcommittee concurs with the Governor's recommendation.

## Section 13 – University of Kansas

### Agency Request/Governor's Recommendation

The agency's requests for FY 1991 include: \$770,000 from University Press funds to construct a new office building; \$7,500,000 from federal funds to construct a new biosciences research center; \$1,730,000 from dormitory fees for dormitory improvements (including \$750,000 for renovation of the Lewis Hall Cafeteria); \$300,000 from the Law Enforcement Training Center Fee Fund for Phase IB of renovation of the center; \$1,500,000 from housing fees (\$650,000), parking fees (\$650,000), and other funds (\$200,000) for construction of a parking lot for the new Lied Performing Arts Center; \$342,000 from the EBF for the first year of a three-year project to construct an addition to Murphy Hall (funding is also requested for FY 1992 (\$4,300,000) and FY 1993 (\$1,073,000)); \$475,000 from the EBF to remodel part of Malott Hall; and \$898,000 from the EBF to continue an analysis and upgrade of the campus utility system (an additional \$803,000 in FY 1992 would be required to complete the project).

The Governor concurs with the agency's FY 1991 requests for the University Press office building (\$770,000), dormitory improvements (\$1,730,000), and parking lot improvements (\$100,000). The Governor also recommends \$1,350,000 from parking fees for the Lied Center parking lot.

### Senate Subcommittee Recommendation

The Senate Subcommittee concurs with the Governor's recommendation, with the following adjustments:

1. Add EBF financing of \$486,373 in FY 1991, \$411,627 in FY 1992, and \$803,000 in FY 1993 for the utility system upgrade project as recommended by the Joint Committee on State Building Construction.
2. Authorize the institution to raze or relocate two small structures in FY 1991 located at the site of the new Lied Center.
3. Revise funding for the Lied Center parking lot totaling \$1,500,000 in FY 1991, including \$650,000 from housing fees, \$650,000 from parking fees, and \$200,000 from other funding sources as recommended by the Joint Committee on State Building Construction.
4. The Subcommittee requests that the Joint Committee on State Building Construction revisit the Law Enforcement Training Center -- Phase IB project in order to determine if its omission from the Governor's recommendations was inadvertent and if the project should proceed.

## Section 14 – University of Kansas Medical Center

### Agency Request/Governor's Recommendation

The agency's requests for FY 1991 include: \$850,000 from the Hospital Fund to renovate space within Bell Memorial Hospital for an intensive care unit area, \$200,000 from parking garage revenues for maintenance of the parking garage, \$75,000 from parking fees for parking lot maintenance, \$2,500,000 from the Hospital Fund for Phase I of the renovation of the hospital (an additional \$462,000 is also requested in FY 1992 to complete the project), and \$400,000 from the Hospital Fund for corrective work to the hospital's HVAC system. The agency also requests multi-year financing totaling \$12,760,000 from the EBF for construction of a new biomedical research building. Construction funds for the project (which is currently under planning) are requested for FY 1991 (\$2,500,000), FY 1992 (\$5,450,000), and FY 1993 (\$4,810,000).

The Governor concurs with the agency's FY 1991 requests for renovation for an intensive care unit area (\$850,000), HVAC repairs (\$400,000), and parking lot maintenance (\$75,000).

### Senate Subcommittee Recommendation

The Senate Subcommittee concurs with the Governor's recommendation, with the following adjustments:

1. Authorize the institution to raze two small structures in FY 1991.

## Section 15 – Wichita State University

### Agency Request/Governor's Recommendation

The 1989 Legislature approved a total of \$12,000,000 to construct a new science classroom building. Approved funding included State General Fund financing in FY 1991 (\$2,000,000) and FY 1992 (\$4,000,000) and EBF financing in FY 1991 (\$1,900,000) and FY 1992 (\$2,100,000). The Governor recommends that the State General Fund financing be lapsed and that the project be financed entirely from the EBF over four fiscal years. EBF financing totaling \$12,961,870 is recommended for FY 1990 (\$500,000), FY 1991 (\$6,000,000), FY 1992 (\$4,250,000), and FY 1993 (\$2,211,870).

### Senate Subcommittee Recommendation

The Senate Subcommittee concurs with the Governor's recommendation, with the following adjustments:

1. Shift EBF financing for the Science Classroom project to \$500,000 in FY 1990, \$5,853,299 in FY 1991, \$4,250,000 in FY 1992, and \$2,358,571 in FY 1993, as recommended by the Joint Committee on State Building Construction.

### Section 16 – State Board of Regents

#### Agency Request/Governor's Recommendation

The agency requests \$8,000,000 from the EBF for major repairs and maintenance at the state's Regent's institutions in FY 1991. The Governor recommends funding from the EBF for rehabilitation and repair projects for institutions of higher education of \$8,000,000 in FY 1991, \$9,000,000 in FY 1992, and \$10,000,000 in FY 1993.

#### Senate Subcommittee Recommendation

The Senate Subcommittee concurs with the Governor's recommendation.



Table III

KANSAS BOARD OF REGENTS

Capital Improvements Recommended from the Educational  
Building Fund for Appropriation in FY 1991 by the  
Joint Committee on State Building Construction

FY 1991

Project Title	Regents' Systemwide Priority	Total Project Cost	Prior Years	FY 1991	FY 1992	FY 1993	FY 1994	FY 1995
<b>University of Kansas - Lawrence</b>								
1. Major Utility Analysis Upgrade	3	\$ 1,980,000	\$ 279,000	\$ 486,373	\$ 411,627	\$ 803,000	\$ --	\$ --
2. Malott Hall Partial Remodeling	12	475,000	--	--	--	--	--	--
3. Murphy Hall Addition	15	5,715,000	--	--	--	--	--	--
4. Hoch Auditorium Renovation	--	13,328,000	--	--	--	--	--	--
5. Spooner Hall Renovation	--	3,022,000	--	--	--	--	--	--
TOTAL		\$ 24,520,000	\$ 279,000	\$ 486,373	\$ 411,627	\$ 803,000	\$ --	\$ --
<b>University of Kansas Medical Center</b>								
Research Building	5	\$ 13,520,000	\$ 760,000	\$ --	\$ --	\$ --	\$ --	\$ --
2. Robinson Hall Renovation	--	1,500,000	--	--	--	--	--	--
TOTAL		\$ 15,020,000	\$ 760,000	\$ --	\$ --	\$ --	\$ --	\$ --
<b>Kansas State University</b>								
1. Handicapped Access	4	\$ 1,195,000	\$ 60,000	\$ 340,000	\$ --	\$ --	\$ --	\$ --
2. Fire and Life Safety	7	517,500	--	--	--	--	--	--
3. Plant Sciences -- IIA								
a. Greenhouses	--	1,060,000	560,000	500,000 <sup>a</sup>	--	--	--	--
b. Building Addition	8	12,350,000	298,000	--	--	--	--	--
4. Renovate Seaton Hall East Wing	--	4,200,000	--	--	--	--	--	--
Calvin Hall Renovation and								
Addition	--	8,705,000	--	--	--	--	--	--
TOTAL		\$ 28,027,500	\$ 918,000	\$ 840,000	\$ --	\$ --	\$ --	\$ --

3-17

3-12

<u>Project Title</u>	<u>Regents' Systemwide Priority</u>	<u>Total Project Cost</u>	<u>Prior Years</u>	<u>FY 1991</u>	<u>FY 1992</u>	<u>FY 1993</u>	<u>FY 1994</u>	<u>FY 1995</u>
<b>Wichita State University</b>								
1. Science Classroom and Laboratory Building	--	\$ 13,460,005	\$ 1,007,135	\$ 5,853,299 <sup>a</sup>	\$ 4,250,000	\$ 2,358,571	\$ --	\$ --
2. Campus Utility Study	--	100,000	100,000	--	--	--	--	--
Ablah Library	--	--	--	21,084	--	--	--	--
4. 3-D Art and Graduate Painting Building	--	3,655,957	--	--	--	--	--	--
<b>TOTAL</b>		<b>\$ 17,224,962</b>	<b>\$ 1,107,135</b>	<b>\$ 5,874,383</b>	<b>\$ 4,250,000</b>	<b>\$ 2,358,571</b>	<b>\$ --</b>	<b>\$ --</b>
<b>Emporia State University</b>								
1. Remodel Plumb Hall	2	\$ 7,503,000	\$ 800,000	\$ 450,000	\$ 2,885,252	\$ 3,368,048	\$ --	\$ --
2. Remodel Cremer Hall	2	1,764,000	85,000	1,679,150	--	--	--	--
3. Various Reroof Projects: Stormont Maintenance King Hall and Liberal Arts and Science	16	225,000	--	--	--	--	--	--
4. Fire and Life Safety Improvements I	--	350,000	--	--	--	--	--	--
<b>TOTAL</b>		<b>\$ 9,842,000</b>	<b>\$ 885,000</b>	<b>\$ 2,129,150</b>	<b>\$ 2,885,252</b>	<b>\$ 3,368,048</b>	<b>\$ --</b>	<b>\$ --</b>
<b>Pittsburg State University</b>								
1. Critical Building and Grounds Improvements II								
a. Stadium Restoration	10	\$ 656,000	\$ --	\$ --	\$ --	\$ --	\$ --	\$ --
b. Steam Line Replacement II	11	266,663	146,663	--	--	--	--	--
c. Asbestos Removal III	13	450,000	--	--	--	--	--	--
2. Porter Remodeling II	14	686,300	500,000	--	--	--	--	--
3. Warehouse/Maintenance Facility	17	841,500	--	--	--	--	--	--
4. Industrial and Engineering Technology Complex	--	20,431,000	--	--	--	--	--	--
<b>TOTAL</b>		<b>\$ 23,331,463</b>	<b>\$ 646,663</b>	<b>\$ --</b>	<b>\$ --</b>	<b>\$ --</b>	<b>\$ --</b>	<b>\$ --</b>

3-13

<u>Project Title</u>	<u>Regents' Systemwide Priority</u>	<u>Total Project Cost</u>	<u>Prior Years</u>	<u>FY 1991</u>	<u>FY 1992</u>	<u>FY 1993</u>	<u>FY 1994</u>	<u>FY 1995</u>
<b>Fort Hays State University</b>								
1. Picken Hall Renovation	9	\$ 3,250,000	\$ --	\$ --	\$ --	\$ --	\$ --	\$ --
2. New Science Building	--	<u>12,000,000</u>	<u>--</u>	<u>--</u>	<u>--</u>	<u>--</u>	<u>--</u>	<u>--</u>
<b>TOTAL</b>		<b>\$ 15,250,000</b>	<b>\$ --</b>	<b>\$ --</b>	<b>\$ --</b>	<b>\$ --</b>	<b>\$ --</b>	<b>\$ --</b>
<b>Kansas College of Technology</b>								
1. Aeronautical Center	6	\$ 1,970,000	\$ --	\$ --	\$ --	\$ --	\$ --	\$ --
2. Addition to Technology Center Phase II -- Including Auditorium and Library Expansion	--	<u>7,208,000</u>	<u>--</u>	<u>--</u>	<u>--</u>	<u>--</u>	<u>--</u>	<u>--</u>
<b>TOTAL</b>		<b>\$ 9,178,000</b>	<b>\$ --</b>	<b>\$ --</b>	<b>\$ --</b>	<b>\$ --</b>	<b>\$ --</b>	<b>\$ --</b>
<b>Board of Regents</b>								
Systemwide Maintenance and Repairs	1			<u>\$ 8,000,000</u>	<u>\$ 9,000,000</u>	<u>\$ 10,000,000</u>	<u>\$ --</u>	<u>\$ --</u>
<b>GRAND TOTAL</b>				<b>\$ 17,329,906</b>	<b>\$ 16,546,879</b>	<b>\$ 16,529,619</b>	<b>\$ --</b>	<b>\$ --</b>
Anticipated Income from Educational Building Fund (EBF) (Based 1.0 mills)				\$ 15,758,299	\$ 16,546,879	\$ 16,924,288	\$ 17,317,054	\$ 18,098,209
a) Already appropriated.								
Beginning Balance				\$ 2,071,607	\$ 500,000	\$ 500,000	\$ 894,669	\$ 18,211,723
New Receipts				<u>15,758,299</u>	<u>16,546,879</u>	<u>16,924,288</u>	<u>17,317,054</u>	<u>18,098,209</u>
Total Available				\$ 17,829,906	\$ 17,046,879	\$ 17,424,288	\$ 18,211,723	\$ 36,309,932
Less Expenditures				<u>17,329,906</u>	<u>16,546,879</u>	<u>16,529,619</u>	<u>--</u>	<u>--</u>
Balance Forward				<u>\$ 500,000</u>	<u>\$ 500,000</u>	<u>\$ 894,669</u>	<u>\$ 18,211,723</u>	<u>\$ 36,309,932</u>