

Approved March 1, 1988
Date

MINUTES OF THE Senate COMMITTEE ON Governmental Organization

The meeting was called to order by Senator Vidricksen at
Chairperson

1:35 ~~am~~ p.m. on February 29, 1988 in room 531-N of the Capitol.

All members were present except:

Committee staff present:

Lynn Holt - Research
Jill Wolters - Revisor

Conferees appearing before the committee:

Sandy Duncan - Kansas Social and Rehabilitation Services
Zoel Parenteau - KPTS - Wichita

The Chairman called the meeting to order to discuss SB 650 concerning the Kansas Sunset Law on the Department of Social and Rehabilitation Services. He introduced Sandy Duncan who distributed copies of the Glossary of Terms (Exhibit A) and the Central Office Organization Chart (Exhibit B) from the Department of Social and Rehabilitation Services. Mr. Duncan explained the various divisions within the Agency and answered questions from the committee. After some discussion a motion was made by Senator Johnston to report SB 650 favorable for passage. This was seconded by Senator Hoferer. Motion carried.

Attention was then turned to SB 653 concerning the Kansas Public Broadcasting Commission. Lynn Holt briefed the committee on the Subcommittee Report from the House explaining that this plan would abolish the Commission and set up two advisory agents. (Exhibit C) SB 653 would return to the original intent of relating to the powers of public broadcasting, radio and T.V. The committee discussed this briefly and Senator Hoferer made a motion to recommend SB 653 favorable for passage. This motion was seconded by Senator Gaines and carried.

A motion was called for on SB 662 concerning prefiling of bills and resolutions. Senator Johnston made a motion to recommend this bill favorably. It was seconded by Senator Frey. Motion carried.

Likewise, a motion was made by Senator Johnston to recommend SB 664 (concerning organizational, orientation and educational meetings of members and members elect) favorable for passage. This was seconded by Senator Frey and the motion carried.

A motion was then made by Senator Winter to approve the minutes of the February 23 meeting. Senator Francisco seconded this and motion carried.

The meeting was then adjourned by the Chairman at 2:32 p.m.

KANSAS SOCIAL AND REHABILITATION SERVICES

GLOSSARY OF TERMS
JANUARY 1988

AABD: Aid to the Aged, Blind and Disabled (Title XVI)
AA/EEOP: Affirmative Action/Equal Employment Opportunity Program
AAP: Affirmative Action Plan
AB: Aid to the Blind
ACH: Adult Care Home
ACIL: Attendant Care for Independent Living
ACHE: Adult Care Home Placement
ACP: Alternative Care Program
ACSW: Academy of Certified Social Workers
AD: Area Director
ADAMHA: Alcohol, Drug Abuse, Mental Health Administration
ADAS: Alcohol and Drug Abuse Services
ADC: Aid To Dependent Children
ADC-FC: Aid to Dependent Children in Foster Care
ADL: Activities of Daily Living
AE: Automated Eligibility
AFDC: Aid to Families with Dependent Children
AID TO FAMILIES WITH DEPENDENT CHILDREN (AFDC):
Developed in 1935 to provide financial aid to needy children
the AFDC Program is funded by both Federal and State allocations.
AM: Area Manager (obsolete)
AMA: Against Medical Advice or American Medical Association
AO: Area Office or Administrative Officer
APD: Advanced Planning Document
APTD: Aid to the Permanently and Totally Disabled
APW: Aid to Pregnant Women
APWA: American Public Welfare Association
ARC: Association of Retarded Citizens
ART: Assurance Review Team
AS: Administrative Services or Adult Services
ATBCB: Architectural and Transportation Barriers Compliance Board

* * *

BC&BS: Blue Cross and Blue Shield
BES: Blind Employment Services
BEOG: Basic Education Opportunity Grant
BEP: Business Enterprise Program

* * *

CAECSES: Comprehensive Automated Eligibility Child Support Enforcement System
CAN: Child Abuse and Neglect
CANIS: Child Abuse Neglect Information System
CAP: Client Assistance Program (Rehabilitative Services) or
Cost Allocation Plan (Finance)
CARF: Commission on the Accreditation of Rehabilitation Facilities
CASA: Court Appointed Special Advocate
CASK: Central Accounting System of Kansas
CAVE: Computer Assisted Vocational Evaluation
CCICP: Charitable Institution Commodity Program
CE: Continuing Education
CEU: Continuing Education Units
CEN-PAY: Central Payments
CFR: Code of Federal Regulations

CHILD ABUSE AND NEGLECT PROGRAM - FEDERAL FUND:

Authorized by the Child Abuse Prevention and Treatment Act, 42 U.S.C. 5101, et seq., as amended, the objective of the Child Abuse and Neglect Program is to assist states in improving activities for the prevention and treatment of child abuse through the use of federal grant funds.

CHILD SUPPORT ENFORCEMENT (CSE):

The CSE program locates absent parents, enforces and establishes child support and medical support orders, and establishes paternity.

CIL: Center for Independent Living
CINC: Child (Children) In Need of Care
CLASS: Community Living Advocacy Support Services

CLIENT ASSISTANCE PROGRAM (CAP):

States receiving federal funding for vocational rehabilitation services are required under federal law to provide client assistance concerning available services and referrals.

CMHC: Community Mental Health Centers
CMRC: Community Mental Retardation Center
CO: Central Office (Topeka)

COMMUNITY SERVICE BLOCK GRANT (CSBG):

Administered by the U.S. Department of Health and Human Services, CSBG provides funding for local Community Action Agencies. Direct assistance is provided to individuals in an effort to combat poverty.

COMMUNITY WORK EXPERIENCE PROGRAM (CWEP):

CWEP is a mandatory state program for nonexempt General Assistance Unrestricted clients. The program provides work experience to enhance job skills necessary for employment opportunities.

CONTRACT COMPLIANCE PROGRAM:

Administered by the Civil Rights/Equal Employment Opportunity Section, this program conducts federally mandated civil rights compliance reviews of SRS and its providers to determine if service delivery and employment practices comply with the nondiscrimination requirements of federal agencies that provide funds to SRS.

CP: Claims Processing
CPAS: Claims Processing Assessment System
CP/FS: Child Protection and Family Services
CPM: Certified Public Manager
CPS: Child Protection Services
CR/EEO: Civil Rights/Equal Employment Opportunity Section
CRC: Certified Rehabilitation Counselor
CSBG: Community Service Block Grant
CSE: Child Support Enforcement
CSFP: Community Supplemental Food Program
CSP: Community Support Program
CTS: Child Tracking System
CWEP: Community Work Experience Program
C&Y: Children and Youth

* * *

DA: State Department of Administration or District Attorney
DB: Deaf-Blind
DD: Developmental Disabilities
DDRS: Disability Determination and Referral Service
DDS: Disability Determination Services
DECO: Displaced Eclectic Computerization Ombudspersons (CAECSES)
DG: Data General
DIB: Disability Insurance Beneficiary
DMC: Distinct Medical Consultant

DME: Durable Medical Equipment
DMP: Division of Medical Programs
DN: Director of Nursing
DNR: Did Not Report
DOA: State Department of Administration
DOB: Date of Birth
DP: Data Processing
DPC: Distinct Psychiatric Consultant
DRG: Diagnostic Related Groups
DBS: Division of Services for the Blind

* * *

EA: Emergency Assistance
EAP: Employee Assistance Program
ECSHG: Emergency Community Services Homeless Grant
ECT: Extended Care Facilities
EE: Extended Evaluation
EEO: Equal Employment Opportunity
EEOC: Equal Employment Opportunity Commission

EMERGENCY ASSISTANCE (EA):

The Emergency Assistance Program provides emergency funds to families with children for disaster relief when no other resources are available.

EMPLOYEE COUNSELING PROGRAM:

A factfinding, conciliation, mediation and referral program of the CR/EEO Section that attempts to assist employees and supervisors to resolve job-related problems prior to the filing of a formal grievance, appeal or complaint.

EOB: Explanation of Benefits
EP: Employability Plan
EPSDT: Early and Periodic Screening, Diagnosis and Treatment Program
ERT: Executive Review Team
ECS: Electronic Claims System
ETS: Employment Training Specialist

* * *

FARMS: Finance, Accounting, Reporting Management System

FC: Foster Care

F&C TRUST FUND:

Family and Children Trust Fund, Grant monies authorized by KSA 75-5328 for the prevention of child abuse/neglect.

FFP: Federal Financial Participation

FFY: Federal Fiscal Year

FH: Foster Home

FOOD STAMP PROGRAM:

Enacted in 1964 this federally funded food assistance program provides coupons to needy individuals and families for the purchase of food.

FOSTER CARE TITLE IV-E:

Federal Funds for the maintenance needs of eligible children in custody of the Secretary of SRS.

FP: Food Programs

FPS: Family Preservation Services

FRS: Fraud and Recovery Section

FS: Food Stamps

FSA: Family Support Administration

FSW: Family Support Worker

FY: Fiscal Year

* * *

GA: General Assistance

GA/FC: General Assistance/Foster Care

GAR: General Assistance Reintegration

GATB: General Aptitude Test Battery

GAU: General Assistance Unrestricted

GENERAL ASSISTANCE (GA):

State funded program providing minimum financial support for eligible individuals and families in need which do not qualify for other types of public assistance.

GH/RC: Group Home/Residential Center

GRAMM-RUDMAN-HOLLINGS ACT:

Federal Legislation enacted in 1985 requiring progressively lower deficits in the federal budget from 1986 to 1991. P.L. 99-177 is formally titled The Public Debt Limitation Balanced Budget and Emergency Control Act.

* * *

HCBS: Home and Community Based Services

HCFA: Health Care Finance Administration

HH: Home Health

HHS: Health and Human Services

HM: Homemaker

HMO: Health Maintenance Organization

HRD: Human Resource Development

HUD: Housing and Urban Development

* * *

IA: Interim Assistance

IAR: Interim Assistance Reimbursement

ICAG: Implementation Conversion Advisory Group (CAECSES)

ICF: Intermediate Care Facility

ICF/MH: Intermediate Care Facility for Mental Health

ICF/MR: Intermediate Care Facility for Mental Retardation

ICJ: Interstate Compact on Juveniles

ICPC: Interstate Compact on Placement of Children

IFB: Invitation for Bid

IGR: Individual Group Residence

IL: Independent Living

ILC: Independent Living Center

IM: Income Maintenance

IMC: Income Maintenance Chief

IMD: Institution for Mental Diseases

IMP: Income Maintenance Policy
IMW: Income Maintenance Worker
IOP: Inspection of Care
IPR: Independent Professional Review
I&R: Information and Referral
IRAP: Indochinese Refugee Assistance Program
IWRP: Individualized Written Rehabilitation Program

* * *

JCAH: Joint Commission on Accreditation of Hospitals
JJDP: Juvenile Justice Delinquency Prevention
JO: Juvenile Offender

JOB TRAINING PARTNERSHIP ACT (JTPA):
Replacing CETA in 1982, JTPA encourages private sector involvement in employment training programs.

JOP: Juvenile Offender Programs
JPP: Job Preparation Programs
JS: Job Search
JTPA: Job Training Partnership Act

* * *

KABVI: Kansas Association for the Blind and Visually Impaired
KAC: Kansas Action for Children
KACEH: Kansas Advisory Committee on Employment of the Handicapped
KAEYC: Kansas Association for the Education of Young Children
KALPCCA: Kansas Association of Licensed Private Child Care Agencies
KAPS: Kansas Advocacy and Protective Services
KAR: Kansas Administrative Regulations
KARE: Kansas Adoption Resource Exchange
KARF: Kansas Association of Rehabilitation Facilities
KCCR: Kansas Commission on Civil Rights
KCCT: Kansas Child Care Training Opportunities
KCDHI: Kansas Commission for the Deaf and Hearing Impaired

KCDP: Kansas Council of Disabled Persons
KCPCA: Kansas Committee for Prevention of Child Abuse
KCSL: Kansas Children's Service League
KCSW: Kansas Commission on Social Welfare
KDHE: Kansas Department of Health and Environment
KEAP: Kansas Employee Assistance Program
KFMC: Kansas Foundation for Medical Care
KFMIS: Kansas Facilities Management Information System
KFSM: Kansas Food Stamp Manual
KFSP: Kansas Food Stamp Program
KIB: Kansas Industries for the Blind
KMSM: Kansas Medical Services Manual
KNI: Kansas Neurological Institute
KPAM: Kansas Public Assistance Manual
KPCDDS: Kansas Planning Council on Developmental Disability Services
KPERS: Kansas Public Employee Retirement System
KRA: Kansas Rehabilitation Association
KRIS: Kansas Rehabilitation Information System
KSA: Kansas Statutes Annotated (Laws)
KSAFP: Kansas State Association of Foster Parents
KSD: Kansas School for the Deaf
KSIR: Kansas State Industrial Reformatory
KUMC: Kansas University Medical Center
KVRC: Kansas Vocational Rehabilitation Center

* * *

LD: Learning Disabled
LEA: Local Education Agency or Authority
LIEAP: Low Income Energy Assistance Program
LMHT: Licensed Mental Health Technician

LOW INCOME ENERGY ASSISTANCE PROGRAM (LIEAP):
Administered by the Department of Health and Human Services, LIEAP provides assistance to low income households to aid in payments for heating and cooling.

LPA: Limited Purchase Agreement
LRP: Local Resource Person

LSH: Larned State Hospital

LTC: Long Term Care

* * *

MA: Medical Assistance

MAC: Maximum Allowable Cost

MAcrABD: Medical Assistance categorically related to the Aged, Blind and Disabled

MAcrADC: Medical Assistance categorically related to Aid to Dependent Children

MAcrADC-UP: Medical Assistance categorically related to Aid to Dependent Children - Unemployed Parent

MAcrAFDC: Medical Assistance categorically related to Aid to Families With Dependent Children

MAcrAPW: Medical Assistance categorically related to Aid to Pregnant Women

MAcrRC: Medical Assistance categorically related to Ribicoff Children

MAcrSSI: Medical Assistance categorically related to Supplemental Security Income

MaTaG: Major Task Group (CAECSES)

MC: Medical Card

MCAC: Medical Care Advisory Committee

ME: Medical Eligibility

MEDICAID: A Federal/State funded program to serve needy families with dependent children and persons who are disabled. Payments are made to service providers and financing is determined by the state income through an established formula matched by the state at a rate of 50 percent.

MEDICARE: The national health care program for the aged. Established in 1965 and administered through the Social Security Administration, the program is financed by employer-employee contributions, earmarked taxes, and federal general revenues. All persons 65 and older are eligible for coverage.

MEDIKAN: State funded medical program available to low income persons not eligible for federal medical assistance and who meet the income guidelines.

MENTAL HEALTH SERVICES AND MANAGEMENT BLOCK GRANT (MHSM):

Federal funds provided to subsidize local mental health services, especially community mental health centers.

MH: Mental Health
MHBG: Mental Health Block Grant
MHF: Medical History File
MHMR: Mental Health and Mental Retardation
MH/RS: Mental Health and Retardation Services
MHSH: Mental Health Services for the Homeless
MHSM: Mental Health Services and Management Block Grant
MHT: Mental Health Technician
MIS: Management Information System
MMIS: Medicaid Management Information System
MN: Medical Necessity

MORE OPPORTUNITIES FOR SELF-SUFFICIENCY AND TRAINING (MOST):

MOST serves public assistance and non-public assistance food stamp recipients who are required to register for work by food stamp regulations. The mandatory registration applies to persons mentally and physically able to work who are between 18 and 60 years of age, single parents with children over 6, members of two parent families, or youth not attending school.

MOST: More Opportunities for Self-Sufficiency and Training
MOU: Memorandum of Understanding
MPC: Major Purchase Contract
MQC: Medicaid Quality Control
MR: Mental Retardation or Mentally Retarded
MS: Medical Services

* * *

NARC: National Adoption Resource Center
NCCAN: National Center on Child Abuse and Neglect
NFB: National Federation of the Blind
NIB: National Industries for the Blind
NIDA: National Institute of Drug Abuse

NO PROBABLE CAUSE:

A term used by state and federal civil rights enforcement agencies to state that an investigation of a complaint indicates that no discrimination has occurred.

NPE: Nutrition Program for the Elderly
NRA: National Rehabilitation Association
NSH: Norton State Hospital

* * *

OAA: Old Age Assistance
OASDI: Old Age, Survivors, Disability Insurance
OCR-DE: Office for Civil Rights-U.S. Department of Education
OCR-HHS: Office for Civil Rights-U.S. Department of Health and Human Services
OSCE: Office of Child Support Enforcement
OFA: Office of Family Assistance
OJT: On the Job Training

OLD AGE, SURVIVORS, DISABILITY INSURANCE(OASDI):
The Federal Government Social Insurance Program under the SSA (Social Security Act). Funds are collected from working adults to finance payments to retired persons, disabled beneficiaries, survivors, and Medicare recipients.

OMB: Office of Management and Budget
OP: Outpatient
ORR: Office of Refugee Resettlement
OSERS: Office of Special Education and Rehabilitative Services
OSH: Osawatomie State Hospital
OT: Occupational Therapist
OTC: Over-the-Counter

* * *

PA: Public Assistance, Psychiatric Aide, or Prior Authorization
PACT: Partnership Agreement for Continuity of Treatment

PARTNERSHIP AGREEMENT FOR CONTINUITY OF TREATMENT:
A state program that encourages working agreements between state hospitals and community mental health centers.

PCA: Personal Care Attendant
PCN: Primary Care Network

PCP: Primary Care Physician
PHA: Public Housing Agency
PIL: Protected Income Level

PL 96-272:

The Adoption Assistance and Child Welfare Act of 1980 which established Title IV-E Foster Care and Adoption Assistance.

PME: Person Months Eligible
PMR: Person Months Receiving
POC: Purchase of Service
PPS: Protective Payment System

PROBABLE CAUSE:

A term used by state and federal civil rights enforcement agencies to state that an investigation of a complaint indicates that discrimination has occurred.

PRS: Performance Reporting System
PSH&TC: Parsons State Hospital and Training Center
PSRO: Professional Standards Review Organization
PT: Physical Therapist
PTI: Part Time Intermittent
PTR: Part Time Regular

PUBLIC ASSISTANCE (PA):

State and federal general revenue funds allocated to provide minimum financial aid to persons with no other means of support.

PWI: Projects With Industry

* * *

QA: Quality Assurance
QC: Quality Control
QMRP: Qualified Mental Retardation Professional

* * *

RAP: Refugee Assistance Program
RC: Ribicoff Child

RCB: Rehabilitation Center for the Blind (Topeka)

REFUGEE ASSISTANCE PROGRAM (RAP):

Administered by the U.S. Department of Health and Human Services (HHS) the Refugee Assistance Program provides assistance to immigrants within the United States.

REOMB: Recipient's Explanation of Medical Benefits

RFP: Request for Proposal

RMHF: Rainbow Mental Health Facility

RN: Registered Nurse

RS: Rehabilitative Services

RSDI: Retired Survivors Disability Insurance

* * *

SBVH: Services for the Blind and Visually Handicapped

SCL: State Commissioner's Letter

SCW: State Complex West

SD: Staff Development or Severely Disabled

SEIK: Supported Employment Initiative of Kansas

SEOG: Supplemental Educational Opportunity Grant

SEOO: State Economic Opportunity Office

SFY: State Fiscal Year

SGA: Substantial Gainful Activity

SGF: State General Fund

SHL: Systemhouse, Inc. (Software contractor for CAECSES)

SMAC: State Maximum Allowable Cost

SNF: Skilled Nursing Facility

SOCIAL SECURITY ACT (SSA):

Federal legislation enacted in 1935 to meet the needs of the aged, dependent survivors, disabled people, and needy families.

SOCIAL SERVICE BLOCK GRANT (SSBG):

Administered by the U.S. Department of Health and Human Services, SSBG funds are used by states to furnish social services best suited for elderly, blind, disabled, or low-income individuals. Allocations are based on a formula using state population figures and no state match is required.

SP: State Plan
SRS: Social and Rehabilitation Services
SS: Social Services
SSA: Social Security Act or Social Security Administration
SSBG: Social Service Block Grant
SSC: Social Services Chief
SSDI: Social Security Disability Income
SSI: Supplemental Security Income
SSIS: Social Service Information System
SSN: Social Security Number
ST: Speech Therapist
SUA: Standard Utility Allowance
S/URS: Surveillance and Utilization Review Subsystem

SUPPLEMENTAL SECURITY INCOME (SSI):

Enacted in 1972, SSI offers a minimum cash income for eligible poor who are aged, disabled or blind. SSI replaced state administered, federally reimbursed programs for the aged(OAA), aid to the permanently and totally disabled(APTD), and aid to the blind(AB). Federal SSI programs are funded through monies from federal general revenues and are administered by the Social Security Administration.

SW State Ward or Social Worker
SWI: Social Work Instructor

* * *

TAD: Turnaround Document
TAG: Technical Assistance Group or Technical Assurance Group
TDD: Telecommunication Device for the Deaf
TEFAP: Temporary Emergency Food Assistance Program

TEMPORARY EMERGENCY FOOD ASSISTANCE PROGRAM (TEFAP):

A federally funded program intended to provide, at no cost, food commodities for needy persons.

TGA: Transitional General Assistance
TIE-AS: Transition Into Employment - Adult Services

Title IV-A: of the Social Security Act - Federal Funds source for money payment to clients (ADC)
Title IV-B: of the Social Security Act - Federal Funds source for Child Welfare Services
Title IV-D: of the Social Security Act - Federal Funds source for Child Support Enforcement
Title IV-E: of the Social Security Act - Federal Funds source for ADC-Foster Care
Title XIX: of the Social Security Act - Federal Funds source for Medical and Nursing Home payments
Title XX: of the Social Security Act - Federal Funds source for Social Service payments

TPL: Third Party Liability
TPR: Third Party Recovery
TSH: Topeka State Hospital

* * *

UR: Utilization Review
USDA: United States Department of Agriculture

* * *

VO: Vocational Objective
VR: Vocational Rehabilitation
VRU: Vocational Rehabilitation Unit

* * *

WAIS: Wechsler Adult Intelligence Scale
WC: Worker's Compensation or Wheel Chair
WIC: Women Infants and Children Nutrition Program
WIN: Work Incentive Program
WISC: Wechsler Intelligence Scale for Children

WOMEN, INFANTS AND CHILDREN NUTRITION PROGRAM (WIC):

A special supplemental food program designed to provide assistance to women, infants and children at risk of nutritional deficiencies due to lack of income.

WORK INCENTIVE PROGRAM (WIN):

A federally mandated program developed in 1967 designed to assist recipients of Aid To Families With Dependent Children (AFDC) in becoming self-supporting.

WRAT: Wide Range Achievement Test

WSH&TC: Winfield State Hospital & Training Center

* * *

YAP: Youth Adjustment Program, Kansas Vocational Rehabilitation Center

YC: Youth Center

YCAA: Youth Center at Atchison

YCAB: Youth Center at Beloit

YCAL: Youth Center at Larned

YCAT: Youth Center at Topeka

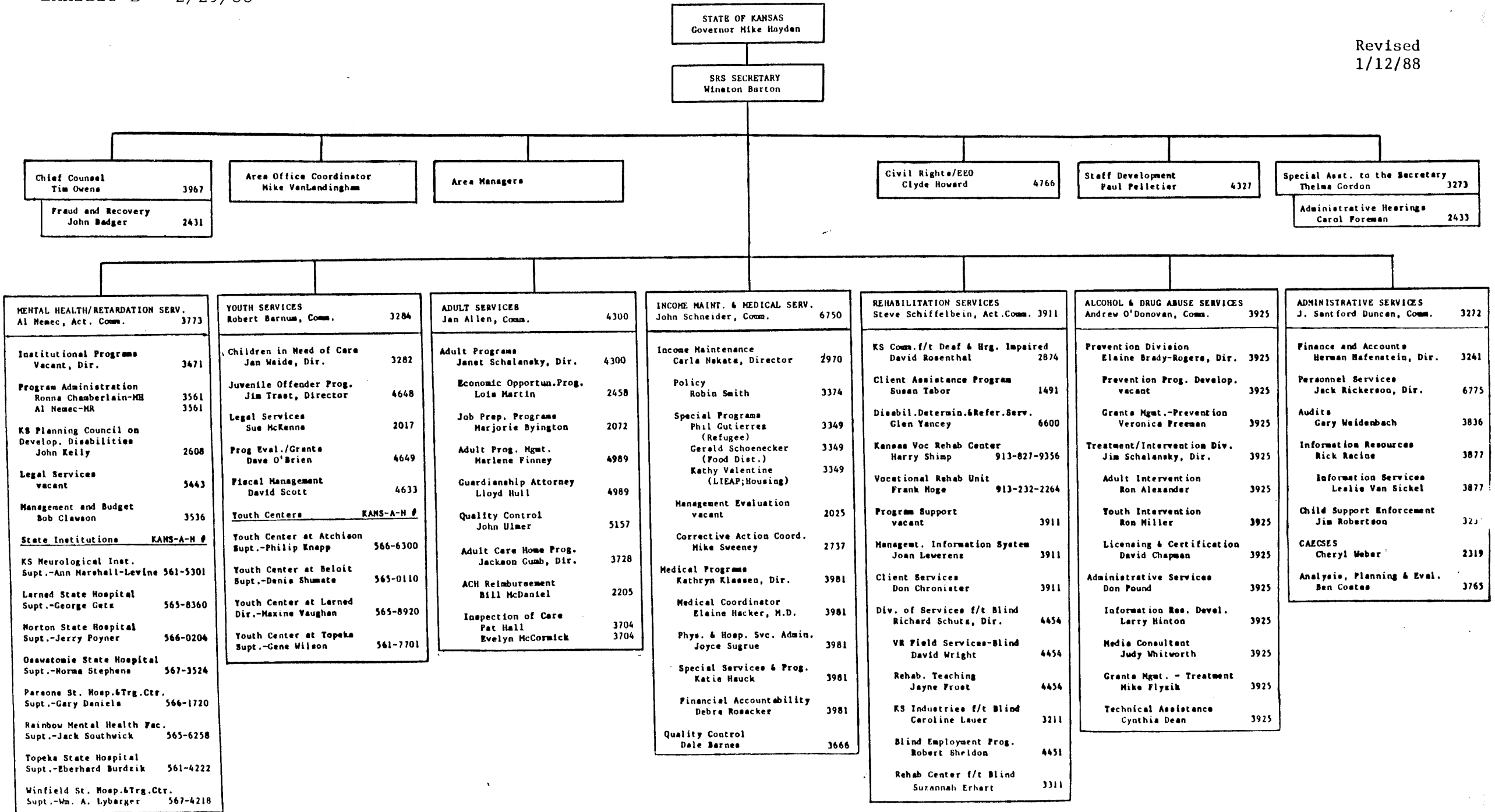
YS: Youth Services

YSW: Youth Service Worker

YTS: Youth Tracking System

SRS CENTRAL OFFICE ORGANIZATION CHART

Revised
1/12/88



SUBCOMMITTEE REPORT

Agency: Kansas Public Broadcasting
Commission

Bill No. 2720

Bill Sec. 8

Analyst: Holt

Analysis Pg. No. 222

Budget Pg. No. 3-65

<u>Expenditure Summary</u>	<u>Agency Req. FY 89</u>	<u>Governor's Rec. FY 89</u>	<u>Subcommittee Adjustments</u>
All Funds:			
State Operations	\$ 20,599	\$ 6,500	\$ (6,500)
Local Aid	131,000	131,000	--
Other Assistance	<u>1,028,087</u>	<u>843,500</u>	<u>(44,500)</u>
TOTAL	<u>\$ 1,179,686</u>	<u>\$ 981,000</u>	<u>\$ (51,000)</u>
State General Fund:			
State Operations	\$ 20,599	\$ 6,500	\$ (6,500)
Local Aid	131,000	131,000	--
Other Assistance	<u>728,087</u>	<u>543,500</u>	<u>(44,500)</u>
TOTAL	<u>\$ 879,686</u>	<u>\$ 681,000</u>	<u>\$ (51,000)</u>
Economic Development Initiatives Fund:			
State Operations	\$ --	\$ --	\$ --
Local Aid	--	--	--
Other Assistance	<u>300,000</u>	<u>300,000</u>	<u>--</u>
TOTAL	<u>\$ 300,000</u>	<u>\$ 300,000</u>	<u>\$ --</u>
FTE Positions	0.5	--	--

Agency Estimate/Governor's Recommendation

Expenditures of \$1,179,686 are requested for FY 1989. Of that amount, \$879,686 is from the State General Fund and \$300,000, which was authorized for the KOOD Lakin project by the 1987 Legislature, is from the State Economic Development Initiatives Fund. The FY 1989 State General Fund request of \$879,686 includes: \$14,099 for the salary and fringe benefits of a half-time position to assist the Commission; \$6,500 for the Commission's administrative expenditures and Board per diem; \$55,000 for support of postsecondary television courses; \$550,000, the same as appropriated for FY 1988, for operating grants to public television stations in Wichita, Topeka, Bunker Hill, and Kansas City; \$35,000, the same as appropriated for FY 1988, for a grant to KANZ-FM public radio station (Pierceville); \$69,087 for replacement equipment matching grants to undesignated public television and radio stations; \$25,000 to KANU-FM public radio station (Lawrence) for replacement equipment; \$25,000 to KMUW public radio station (Wichita) for replacement equipment and expansion of broadcasting capability; and \$100,000 for a grant to Pittsburg State University to begin operating a public radio station. The Federal Communications Commission approved the University's application to construct the station and the federal Public Telecommunications Facilities program awarded to the University a construction grant of \$422,742.

Expenditures of \$981,000 are recommended by the Governor for FY 1989. Of that amount, \$681,000 is from the State General Fund and \$300,000,

designated for the KOOD Lakin project, is from the State Economic Development Initiatives Fund. The FY 1989 State General Fund recommendation of \$681,000 includes: \$6,500, as requested, for the Commission's administrative expenditures and Board per diem; \$50,000 for support of postsecondary television courses; \$550,000, as requested, for operating grants to public television stations in Wichita, Topeka, Bunker Hill, and Kansas City; \$35,000, as requested, for a grant to KANZ-FM public radio station; and \$39,500 for replacement equipment matching grants to undesignated public television and radio stations. No funding is recommended for replacement equipment grants to KANU-FM public radio station (Lawrence) and KMUW-FM public radio station (Wichita). In addition, no funding is recommended for a grant to Pittsburg State University to begin operating a public radio station.

House Subcommittee Recommendations

FY 1988. The House Subcommittee concurs with the Governor's recommendations.

FY 1989. The House Subcommittee concurs with the Governor's recommendations with the following adjustments:

1. Delete \$50,000 for a grant to the Kansas Association of Post Secondary Educational Television (KAPSET). The Subcommittee believes that this program is not cost-effective given reported enrollment of 572 students in FY 1987 and 492 students in FY 1986. In addition, the Subcommittee takes issue with the disproportionate amount of funding (\$42,504 projected for FY 1989) that would finance the broadcasting costs of the participating public television stations. It would appear that there are more cost-effective methods of telecourse distribution, such as use of videotapes. Whereas the Subcommittee does not object to telecourses being offered by postsecondary institutions, should they choose to do so, the Subcommittee believes that these institutions should absorb in their respective budgets the costs associated with leasing and broadcasting telecourses and that this should not be a direct obligation of state government.
2. Add \$50,000 for a one-time public radio operating grant for KRPS-FM at Pittsburg State University, with the provision that the station not request from the Legislature operating support in future fiscal years. The Subcommittee notes that the University was awarded a federal construction grant of \$422,742. The University projects the station's construction and initial operating costs to be \$1,028,917. With federal funding of \$422,742 and \$50,000 from the State General Fund, the remaining \$556,175 would be financed from other revenue sources.
3. Recommend that KOOD receive in FY 1989 \$125,000 without the governance of matching requirements and direct the station to raise in nongovernmental sources \$50,000 more in CY 1989 than in CY 1988, instead of the recommended amount of \$25,000, as a precondition for receipt of total appropriated expenditures of \$175,000. The Subcommittee notes that the station is required in

FY 1988 to raise \$50,000 more from nongovernmental sources than was raised in FY 1987 in order to receive total appropriated expenditures of \$175,000 and believes that the same provision should govern FY 1989 appropriations to the station. The Subcommittee concurs with the Governor's FY 1989 recommendation to evaluate KOOD matching requirements on a calendar year basis instead of on a state fiscal year basis.

4. Reduce \$5,000 from \$35,000 recommended by the Governor for a grant to KANZ public radio station in Pierceville. The Subcommittee repeats the recommendation included in its report from the previous year that the station be encouraged to contact the various public and private educational institutions in its service area and seek support from these institutions in future fiscal years. Apparently no such action has been taken since this recommendation was made last year. The Subcommittee also notes that KANZ-FM is the only public radio station to receive operating funds from the Kansas Public Broadcasting Commission.
5. Delete \$39,500 for replacement equipment projects. The Subcommittee notes that several broadcasting stations have applied for federal grants for replacement equipment but that they will not receive final notification about the disposition of their applications until early FY 1989. Whereas the Subcommittee does not dispute the possible merits of these proposals, the Subcommittee believes that the 1989 Legislature will have more information upon which to base its appropriations decisions for station equipment and that supplemental appropriations, if needed, can be made in 1989 without jeopardizing any federal grant awards.
6. The Subcommittee notes that KTWU public television station in Topeka requested \$7,500 to conduct a feasibility study in FY 1988. This study would ascertain the need for, interest in, and costs associated with extending public broadcasting service to southeast Kansas by erecting a satellite station. (This request was made pursuant to the Kansas Public Broadcasting Commission's FY 1989 budget request and FY 1988 revised estimate.) The Subcommittee believes that this study should be conducted by a local or regional group and that the proposed station should be locally licensed. The Subcommittee also learned that there exists regional interest in forming an educational consortium to conduct a feasibility study of the type proposed by KTWU. It is therefore recommended that plans to extend public television to southeast Kansas be a local effort to the greatest extent possible but that such plans from their inception be shared with the Public Telecommunications Advisory Committee, discussed below, if the consortium intends to request state support in future fiscal years.

It is the Subcommittee's opinion that a completed feasibility study and receipt of a federal construction grant should be preconditions for any consideration of state support for this project and all other public broadcasting proposals involving major service expansion.

7. Consolidate all telecommunications planning, including planning related to public broadcasting services, within the Division of Information Systems and Communications (DISC). This recommendation would involve the elimination of the Kansas Public Broadcasting Commission as a freestanding agency, to be replaced with two advisory committees, discussed below. This recommendation would also involve a statutory redefinition of the term "telecommunications" to include public broadcasting and incorporate the most recent developments in communications technology. To effectuate these recommendations, the Subcommittee recommends that the Appropriations Committee introduce legislation. With respect to the proposed amendment to K.S.A. 75-4710 which sets forth the definition of "telecommunications," the Subcommittee submits that the technology has changed in recent years to embrace voice, data, and video within the digital communications network. As the nature of communications technology has changed, it appears to be potentially costly to address public broadcasting proposals separately from other communications proposals. The Subcommittee learned that the Board of Regents and the law enforcement network have presented interconnection proposals, as have the public television stations (although that proposal was subsequently withdrawn). In addition, according to the Division of Information Systems and Communications (DISC), such proposals are anticipated from the Board of Education and community colleges in future fiscal years. The Subcommittee believes that all interconnection proposals and proposals related to the extension of communications services should be subjected to a coordinated planning effort. To that end, the Subcommittee recommends that a two-tier planning process be established, that is somewhat analogous to the ongoing planning process of water-related agencies in developing their water data bases. It is recommended that a Kansas Public Telecommunications Advisory Committee be established, to be comprised of the heads of 11 agencies or designees. This committee would meet annually and make policy recommendations to DISC under the supervision of the Secretary of Administration. The intent of establishing such a committee would be to actively involve state agencies in identifying communications needs and in integrating those needs into a comprehensive state communications plan, which should ultimately eliminate duplication in services and result in savings to the state. In addition, a Technical Standards Advisory Committee would be established to provide technical expertise to the Telecommunications Advisory Committee. The Technical Standards Telecommunication Advisory Committee would be comprised of appointees by members of the Kansas Public Telecommunications Advisory Committee and would meet at least quarterly. Administrative expenses would be absorbed by DISC and participating state agencies in their operating budgets and no travel and subsistence or per diem costs would be incurred, as all members of advisory committees would be state employees.

8. Delete \$6,500 for the operating expenses of the Kansas Public Broadcasting Commission for the reason explained above.

House Committee Recommendation

The House Committee concurs with the Subcommittee's recommendations for both FY 1988 and FY 1989 with the following adjustment:

1. With respect to No. 8 above, recommend that \$6,500 for the operating expenses of the Kansas Public Broadcasting Commission be deleted, if the legislation addressed in No. 7 is enacted. At this juncture, recommended expenditures of \$6,500 are still included in 1988 H.B. 2720.

2720-548/LH