

Approved March 31, 1986  
Date

MINUTES OF THE Senate COMMITTEE ON Governmental Organization

The meeting was called to order by Senator Wint Winter - Vice Chairman at  
Chairperson

1:35 ~~xxx~~/p.m. on March 24, 1986 in room 531N of the Capitol.

All members were present except:

Senator Bogina

Committee staff present:

Julian Efird - Revisor  
Arden Ensley - Research

Conferees appearing before the committee:

Sandy Duncan - Representative 88th District  
Lila Paslay - Association for Retarded Citizens of Kansas  
Barbara Sabol - Department of Health & Environment  
Dawn Merriman - Salina Mother  
Aileen Whitfill - SRS  
Connie Hubbell - Kansas State Board of Education  
Denise Apt - Representative 10th District

Senator Winter called the meeting to order and introduced Representative Sandy Duncan who addressed the Committee on HB 2734 relating to administrative rules and regulations. Representative Duncan presented an amendment to the House version of this bill to allow a Secretary of a State Agency to adopt a temporary regulation when insufficient appropriations are available for a specific fiscal year to meet certain budget requirements unless the proposed rule and regulation is not contrary to the provisions of an appropriation act or other act of the legislature. (Line 0053 - Exhibit A)

After some discussion of the proposed amendment the Committee turned its attention to HB 3000 which would establish a coordinating council on early childhood development services.

Lila Paslay addressed the Committee in support of this bill stating that one of the difficulties in assessing and providing needed services is that no single agency or department carries the responsibility for providing such services. (Exhibit B) Barbara Sabol urged support for the bill stating that 80% of the children needing services are not receiving appropriate intervention under the current permissive status. (Exhibit C) Dawn Merriman spoke as a parent of a handicapped child urging support of the bill for the needed services it would provide these children. (Exhibit D) Aileen Whitfill also spoke in support of improving and expanding services for young disabled children and their families stating that the needs of preschool children with handicapping conditions and their families are many and varied and that the Department of Health and Environment, SRS, Education and Administration must continue to work together to plan and provide for those needs in an integrated manner. (Exhibit E) Connie Hubbell concurred with the previous testimony, urged support of the bill and answered questions. (Exhibit F)

Senator Francisco made a motion to amend HB 3000 on lines 28 and 30 to strike the word "representative" and change it to read "member". This was seconded by Senator Johnston and motion carried.

Attention was then turned to HB 2928 which would establish a Kansas wildlife art series. She distributed testimony to the Committee, (Exhibit G) and spoke briefly in support of this bill. Testimony was also distributed from Cathy Kruzic, Director of the Travel, Tourism, & Film Services, who was not present. (Exhibit H) There was some discussion on this and it was stated

CONTINUATION SHEET

MINUTES OF THE Senate COMMITTEE ON Governmental Organization,  
room 531 N, Statehouse, at 1:35 ~~xxx~~/p.m. on March 24, 1986

that Kansas needs to promote its own artists. A motion was made by Senator Franciso to place a 4 year period for sunset in this bill. This was seconded by Senator Gaines. Motion carried.

A motion was then made by Senator Hoferer to recommend HB 2928 favorable for passage as amended. This was seconded by Senator Gaines. Motion carried.

A motion was then made by Senator Gaines to approve the minutes of the March 18th meeting. Senator Strick seconded this and motion carried.

The meeting was then adjourned by the Chairman.

GUEST LIST

COMMITTEE: Senate Governmental Organization

DATE: Mar 24, 1986

NAME	ADDRESS	COMPANY/ORGANIZATION
Lela Paslay	Topeka	ABC Kansas
Dawn Meniman	Salina	Parent
Jeanne Muluenon	Topeka	KDHE
Celine Whiffell	Topeka	SLS
B. J. Sabol	Topeka	KDHE
Connie Gehlert	Topeka	St. Dept. of Ed.
Ally McMan	"	" " " "
Faith Forth	"	Dept. of Administration
Art Griggs	"	"

HOUSE BILL No. 2734

By Joint Committee on Administrative Rules and Regulations

1-23

0018 AN ACT relating to administrative rules and regulations; con-  
0019 cerning the adoption of temporary rules and regulations;  
0020 amending K.S.A. 1985 Supp. 77-422 and repealing the existing  
0021 section.

0022 *Be it enacted by the Legislature of the State of Kansas:*

0023 Section 1. K.S.A. 1985 Supp. 77-422 is hereby amended to  
0024 read as follows: 77-422. (a) A rule and regulation may be adopted

0025 by a state agency as a temporary rule and regulation if: (1) The  
0026 preservation of the public peace, health, safety or welfare ne-

0027 cessitates putting such rule and regulation into effect prior to the  
0028 time it could be put into effect if the agency were to comply with

0029 the notice, hearing and publication requirements of this act or  
0030 prior to the effective date prescribed by K.S.A. 77-426, and

0031 amendments thereto; or (2) it is necessary for such rule and  
0032 regulation to take effect prior to the effective date prescribed by

0033 K.S.A. 77-426, and amendments thereto, in order to comply with  
0034 the requirements of the statute authorizing the adoption of such

0035 rule and regulation or with any federal law with which the state  
0036 agency is required to comply or with rules and regulations of

0037 federal agencies adopted pursuant to any such federal law; or (3)  
0038 the rule and regulation is adopting, amending or revoking a rule

0039 and regulation in response to specific direction contained in a  
0040 concurrent resolution adopted by the legislature and directed to

0041 such agency; or (4) ~~any (A) [the state agency determines that]~~  
0042 *insufficient appropriations are available for a specific fiscal year*

0043 *to meet certain budget requirements for such fiscal year which*  
0044 *necessitates putting a rule and regulation into effect prior to the*  
0045 *time it could be put into effect if the agency were to comply with*

0046 *the notice, hearing and publication requirements of this act or*

the state agency and the state rules  
and regulations board finds that

or makes desirable

3/24/86  
Socmds Bd.  
EXHIBIT A

0047 prior to the effective date prescribed by K.S.A. 77-426, and  
0048 amendments thereto, (B) the temporary rule and regulation ap-  
0049 plies only to such fiscal year, and (C) ~~the state agency is specifi-~~  
0050 ~~cally authorized by the provisions of an appropriations act or~~  
0051 ~~other act of the legislature to adopt a temporary rule and regula-~~  
0052 ~~tion under this subsection (a)(4) with regard to the appropriations~~  
0053 ~~that are determined to be insufficient by the state agency.~~

0054 (b) No temporary rule and regulation shall be adopted on the  
0055 basis that such rule and regulation must be adopted as a tempo-  
0056 rary rule and regulation for the purpose of complying with the  
0057 requirements of the statute authorizing the rule and regulation to  
0058 be adopted or on the basis that such rule and regulation must be  
0059 adopted as a temporary rule and regulation for the purpose of  
0060 complying with any federal law with which the state agency is  
0061 required to comply or with rules and regulations of federal  
0062 agencies adopted pursuant to any such federal law without  
0063 notice having been given and a hearing thereon held in the  
0064 manner prescribed by K.S.A. 77-421, and amendments thereto.  
0065 Temporary rules and regulations, other than temporary rules and  
0066 regulations adopted on the basis that such rules and regulations  
0067 must be adopted as temporary rules and regulations for the  
0068 purpose of complying with the requirements of the statute au-  
0069 thorizing the rules and regulations to be adopted or for the  
0070 purpose of complying with any federal law with which the state  
0071 agency is required to comply or with rules and regulations of  
0072 federal agencies adopted pursuant to any such federal law or  
0073 those adopted pursuant to paragraph (4) of subsection (a), may  
0074 be adopted without the giving of notice and the holding of a  
0075 hearing thereon.

0076 (c) No temporary rule and regulation shall be adopted prior  
0077 to the effective date of the statute authorizing its adoption, but,  
0078 prior to the effective date of such statute, the proposed temporary  
0079 rule and regulation may be submitted to the secretary of admin-  
0080 istration and to the attorney general for approval as required by  
0081 K.S.A. 77-420, and amendments thereto and notice of the pro-  
0082 posed rule and regulation may be given and a hearing held  
0083 thereon in the manner prescribed by K.S.A. 77-421, and amend-

the proposed rule and regulation is not contrary to the provisions of an appropriation act or other act of the legislature.

THE ASSOCIATION FOR  
RETARDED CITIZENS OF KANSAS, INC.



11111 W. 59th TERRACE  
SHAWNEE, KANSAS 66203 • (913) 268-8200

*Hope through understanding*

March 24, 1986

BRENT GLAZIER  
*Executive Director*

GINGER CLUBINE

*President  
Wichita*

CAROL DUCKWORTH

*Vice President  
Lawrence*

VIRGINIA LOCKHART

*Secretary  
Topeka*

ROBERT ATKISSON

*Treasurer  
Topeka*

DON CULLY

*Past President  
Hutchinson*

TO: Sen. Ben Vidricksen, Chairman Re: HB 3000  
Members of the Senate Governmental  
Organization Committee

FROM: Lila Paslay, Chairperson  
Legislative Affairs

The Association for Retarded Citizens of Kansas is asking you to support HB 3000 which, if passed, would establish a state coordinating council on early childhood developmental services.

It is estimated that currently 5300 preschool handicapped children are in need of special services. During the 1984-85 school year only 24% of these children received services.

One of the difficulties in assessing and providing needed services is that no single agency or department carries the responsibility for providing such services. A coordinating council could help insure that services are not being duplicated, that current resources are being utilized in the most appropriate way and that gaps in services can be addressed. Even though we will work toward increased funding for preschool handicapped services, the reality may be declining fiscal support. It will become even more imperative that coordination of preschool programs for the handicapped be at the highest level possible.

We appreciate your consideration of HB 3000 and encourage your support.

EXHIBIT B

3/24/86

• MAKE A •  
*Difference*  
KANSAS  
NETWORK FOR YOUNG  
CHILDREN

KANSAS DEPARTMENT OF HEALTH AND ENVIRONMENT

TESTIMONY ON HB 3000

PRESENTED TO Senate Committee on Governmental Organization, 3/24/86

BACKGROUND INFORMATION:

By applying estimated percentages to the births in Kansas, it is probable that at least 13,000 preschool children might be identified as handicapped within the first five years of life. It is projected that approximately 5,300 preschool children need special education in Kansas. Eighty percent of these children needing services are not receiving appropriate intervention under the current permissive status. In addition to educational services, these young children need health care and social services.

Meeting the multiple needs of these children and their families is a complex task. Recognizing that, Governor Carlin, established in April, 1984, a Cabinet Subcommittee on Early Childhood Developmental Services. The Governor's Task Force on Preschool Services for Handicapped Children had also recommended such action. This Subcommittee is composed of the Secretaries of the Departments of Health and Environment, Administration, and Social and Rehabilitation Services, the Commissioner of Education, and one public member - Joan Armstrong - Wichita. This Subcommittee was commissioned to develop and implement a plan for comprehensive, health, education and social services for preschool children at risk for or with handicapping conditions and their families.

Barbara J. Sabol  
Secretary of Health

Marvin A. Harder  
Secretary of Administration

Robert C. Harder  
Secretary of Social  
& Rehabilitation Services

Harold L. Blackburn  
Commissioner of Education

Joan Armstrong  
Public Member

EXHIBIT C

3-24-86  
Sen. J.O.

Mulvenon • Staff Planner

work For Young Children •  
ial Employment/Opportunity Agency

Topeka, Kansas 66620 •

913-862-9360

3/17/86

STRENGTHS:

This bill would:

- continue the implementation of a state plan to improve and expand services for these young children and their families
- strengthen the coordination among education, health, and social services for these young children and their families
- ensure that state and federal dollars are utilized efficiently

The following are some examples of what has been accomplished:

- Piloting regional services coordinators in the regions of Colby, Garden City, Newton and Hays. These coordinators are to support families in understanding and meeting the needs of their preschool children at risk for or with handicaps. (Funding Sources - Kansas Planning Council for Developmental Disabilities, Title VI-B Discretionary Funds, Local Dollars and Special Education Categorical Reimbursement)
- Establishing an Information/Referral Network. This network can assist Kansans in locating services for preschool children with handicapping conditions and their families.  
Funding Sources:
  - Toll Free Number - Kansas Crippled Children's Advisory Commission
  - Computer - Kansas Department of Education
  - Information/Referral Operator -
    - Kansas Department of Health and Environment
    - Kansas Department of Education
    - Kansas Department of Social and Rehabilitation Services
    - Kansas Planning Council for Developmental Disabilities
    - Kansas University



- Public Awareness Materials - These media materials emphasize that services may be available and that these children and their families can benefit from these services.

Funding Sources:

Kansas Department of Education  
Kansas Department of Health and Environment

- Establishing a Clearinghouse for Training Resources for Personnel Serving the Handicapped

Funding Sources:

Kansas Department of Education  
Emporia State University  
Kansas Planning Council for Developmental Disabilities  
Kansas Association of Rehabilitation Facilities

CONCERNS:

We are convinced that the success of these activities can be attributed to state agencies sharing staff and financial resources. These new and future efforts must not be allowed to cease. Continued commitment of the cabinet level state officials needs to be assured if this plan that has been developed is to be implemented.

DEPARTMENT POSITION:

The Department of Health and Environment supports HB 3000 as does the Governor's Cabinet Subcommittee on Early Childhood Developmental Services which is comprised of the Kansas Department of Health and Environment, Social and Rehabilitation Services, Education, and Administration, and one public member.

TESTIMONY ON HB 3000

PRESENTED TO Senate Committee on Governmental Organization, 3/24/86

I am here today to ask for your support on HB 3000. The establishment of a Cabinet Subcommittee on Early Childhood Developmental Services by Governor Carlin in April of 1984 was a step in the direction of providing services for preschool handicapped population and their families across Kansas.

The Subcommittee is in its' second year of planning, and is composed of the Secretaries of the Department of Health and Environment, Administration, and Social and Rehabilitation Services, the Commissioner of Education and one public member, Joan Armstrong of Wichita. Recently, the chairpersons for the Citizen's Advisory Committee were asked to give input to the Subcommittee as well. As chairperson for the Citizens Advisory Committee, my husband and I attended the Subcommittee on Early Childhood Developmental Services in December, 1985.

The first reason I believe HB 3000 should be passed into law is the Subcommittee has formed a state plan for preschool services for the handicapped population in Kansas. We need to allow the continued commitment of the cabinet level officials to assure the plan will be implemented.

The second reason for my support of HB 3000 is the Governor's Cabinet Subcommittee on Early Childhood Developmental Services provides a very good example of interagency cooperation and what can be accomplished by agencies working together to provide services. The committee proves that interagency agreement can work on a state level. Let's use the model on regional and local levels as well.

The 3rd reason for support of HB 3000 is there would be no fiscal impact other than the commitment of staff time as a federal grant provides funds for staff and operating expenses.

The last and most important reason for support of HB 3000 is to insure that parents of preschool handicapped children in Kansas have a staff of professionals in Topeka working on services for their children. Often, even with benefit of services, it will take parents and families of handicapped children several years to adjust. Parents go from one crisis to the next oblivious of needs outside their immediate families. In the first years, you are not only faced with emotional trauma but with day to day necessities. Taking time off from work to travel for tests and to see specialized physicians is often done on "vacation" time, so that one does not loose income from work.

When my son was preschool age and needed services the most, that was the time in my life when I could give the least support toward developing preschool programs for handicapped children in Kansas.

I ask for your support of HB 3000 to establish the Cabinet Subcommittee on Early Childhood Developmental Services by law.

Thank you.

*Dawn + Don Merriman*

Dawn & Don Merriman  
2515 Rockhurst  
Salina, Kansas 67401  
913-827-7661



STATE OF KANSAS

JOHN CARLIN, GOVERNOR

STATE DEPARTMENT OF SOCIAL AND REHABILITATION SERVICES

OFFICE OF THE SECRETARY

ROBERT C. HARDER, SECRETARY

STATE OFFICE BUILDING  
TOPEKA, KANSAS 66612  
(913) 296-3271  
KANS-A-N 561-3271

KANSAS DEPARTMENT OF SOCIAL AND REHABILITATION SERVICES

Robert C. Harder, Secretary

Testimony

House Bill 3000

Senate Committee on Governmental Organization

March 24, 1986

Mr. Chairman, and members of the Committee, thank you for allowing me to testify today to outline the Kansas Department of Social and Rehabilitation Services' support for H.B. 3000 which establishes a Coordinating Council on Early Childhood Developmental Services.

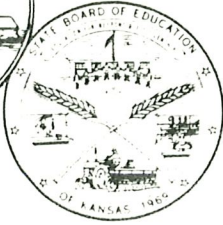
As a member of the Governor's Cabinet Subcommittee on Early Childhood Developmental Services, SRS has been working with the Departments of Education, Health and Environment and Administration toward developing an integrated plan for improving and expanding services for young disabled children and their families. During the last eighteen months, we have been active partners in this effort to better coordinate and target the existing programs serving preschool children as well as jointly applying for funding to expand services to infants and children with handicapping conditions. Examples of the activities of the Cabinet Subcommittee include piloting a system of regional service coordination in four regions of the state - Colby, Garden City, Newton and Hays. This regional service coordination system is being funded through a federal Developmental Disabilities grant and Department of Education funding. Moreover, a public awareness campaign was initiated to inform families of the benefits of early intervention.

The Department of Social and Rehabilitation Services supports the creation of the Coordinating Council on Early Childhood Developmental Services to ensure that the work of the Cabinet Subcommittee will continue. The needs of preschool children with handicapping conditions and their families are many and varied. Social and Rehabilitation Services, Education, Health and Environment and Administration must continue to work together to plan and provide for those needs in an integrated manner. I ask your support for passage of House Bill 3000.

# Kansas State Board of Education

Kansas State Education Building

120 East 10th Street Topeka, Kansas 66612-1103



Kay M. Groneman  
District 1

Connie Hubbell  
District 4

Bill Musick  
District 6

Evelyn Whitcomb  
District 8

Kathleen White  
District 2

Sheila Frahm  
District 5

Theodore R. Von Fange  
District 7

Robert J. Clemons  
District 9

Dale Louis Carey  
District 3

March 24, 1986

Marion (Mick) Stevens  
District 10

TO: Senate Governmental Organization Committee  
FROM: State Board of Education  
SUBJECT: House Bill 3000

My name is Connie Hubbell, Legislative Chairman of the State Board of Education. I appreciate the opportunity to appear before the Committee on behalf of the State Board.

House Bill 3000 provides for a coordinating council on early childhood developmental services consisting of seven members. A council of this nature was originally set up as part of a Governor's cabinet subcommittee. This subcommittee has worked very successfully in coordinating activities of early childhood between Social and Rehabilitation Services, Administration, Health and Environment, and Education.

We believe that the coordination of these activities is educationally and financially sound and should provide for better programs.

The State Board of Education supports House Bill 3000 and recommends your approval of this bill.

DENISE C. APT  
 REPRESENTATIVE, 10TH DISTRICT  
 810 MEADOWBROOK  
 IOLA, KANSAS 66749



TOPEKA

HOUSE OF  
 REPRESENTATIVES

COMMITTEE ASSIGNMENTS  
 CHAIRMAN, LEGISLATIVE EDUCATIONAL  
 PLANNING COMMITTEE  
 VICE CHAIRMAN, EDUCATION  
 MEMBER, AGRICULTURE AND LIVESTOCK

Mr. Chairman and Members of the Committee:

Thank you for giving me the opportunity to appear before this committee regarding the Kansas Wildlife Art Series, HB 2928.

HB 2928 is the result of several of us recognizing a need for Kansas wildlife and her artists to be promoted. The Wildlife Art Series is in its second year and consists of a limited edition print and stamp done by a Kansas wildlife artist. 2928 will place the series in statute so its continuance will be guaranteed.

The objectives of the series are:

1. To increase public awareness of fine wildlife and related sporting opportunities available in Kansas.
2. To continue to extol the virtues of the state of Kansas in the continuing effort to attract visitors to the state.
3. To identify and recognize the many fine Kansas artists specializing in wildlife art.
4. To respond to the requests of wildlife art collectors for such a series of prints and stamps depicting Kansas wildlife.

You have before you brochures portraying the 1st and 2nd of the series, Quail and the Mallard Duck. In 1986 the wildlife portrayed will be the Wild Turkey, the Pheasant in 1987, the Prairie Chicken in 1988, and the Red Tail Hawk in 1989. The signed limited edition prints are \$100.00 and the stamps are \$10.00.

The series is operated and promoted by the Travel and Tourism Division of the Kansas Department of Economic Development. It establishes a Wildlife Arts Council which will select the picture each year which consists of a House and Senate member, the Director of Travel and Tourism a member of the Kansas Arts Commission and a member of Fish and Game.

*DKgr.*

.The project has proved to be self supporting. Any profits would go to promote tourism in Kansas.

The originals are hanging in the governor's office and ultimately will be housed in the Historical Society.

Mr. Chairman and members of the committee, I urge your support of HB 2928 as amended.

# Kansas Wildlife Art Series

## 1984 Print and Stamp — First Edition



"KANSAS COVEY RISE — BOBWHITE QUAIL"

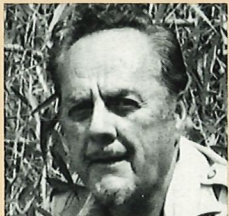
by M. Wayne Willis

### THE SERIES, ITS GOALS AND OBJECTIVES

To promote awareness of this Kansas wildlife and to recognize the talent of Kansas Wildlife artists, the Kansas Wildlife Art Series was established in 1984. The series is an annual, limited edition sale of signed and numbered art prints and stamps depicting Kansas wildlife. Each print in the series will be reproduced from an original painting by a noted Kansas wildlife artist. Nationally-known wildlife artist and native Kansan M. Wayne Willis of Wichita was selected to create the first painting in the series.

### THE ARTIST, HIS PAINTING

M. Wayne Willis' vivid paintings of Kansas wildfowl in its natural environment have brought him national fame. The exceptional talent of the artist and exquisite detail of each painting combine to form a masterful painting of life outdoors. Wayne Willis uses his childhood knowledge of hunting and



fishing to produce his paintings. He studied at the Kansas City Art Institute. For many years he worked at Boeing Aircraft Company in Wichita as an illustrator and Art Editor/Supervisor in the Engineering Department. The demand for Willis' wildlife art made him decide to turn his hobby into a full-time career. Willis is active in Ducks

Unlimited and participates in its wildlife art shows as well as in the prestigious Easton, Maryland, Waterfowl Festival Invitational Show and in other shows throughout the country.

His wildlife paintings and prints are on display and available for purchase at wildlife art galleries across the country.

### THE PRINT

The design is printed in full color on rag paper stock. Image size, 20<sup>5</sup>/<sub>8</sub>" x 14<sup>3</sup>/<sub>4</sub>". Each print will be individually presented in a protective portfolio complete with artist's biography, along with a statement of the Kansas Wildlife Art Series' long range objectives. The print will be signed and numbered. There will be a limited edition of 1,000 prints available. These prints retail for \$100.00 each. Unsigned stamps will be available individually at \$10.00 each.

### HOW TO ORDER

Quantity	Amount
_____ Print (Signed and Numbered) (\$100.00@)	_____
_____ Individual Stamp (\$10.00@)	_____
_____ Print (Signed and Numbered) & Stamp (\$110.00@)	_____
_____ Block of 4 Stamps (\$40.00 per block)	_____
_____ Shipping Charge-Prints Only (\$5.25@)	_____
<i>(No shipping fee for stamps only)</i>	
	Total Enclosed \$ _____

Please Print all Information Clearly

Name \_\_\_\_\_

Address \_\_\_\_\_ City \_\_\_\_\_

State \_\_\_\_\_ Zip \_\_\_\_\_ Phone ( ) \_\_\_\_\_

Send Check or Money Order to:  
KANSAS WILDLIFE SERIES, Travel and Tourism Div., KDED  
503 Kansas Ave., 6th Floor, Topeka, Kansas 66603

*Mike Hamilton*



# Kansas Wildlife Art Series

## 1985—1986 Print and Stamp



"PRAIRIE POND MALLARDS"

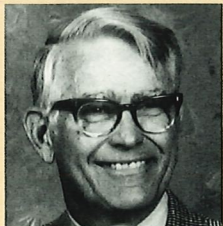
by Orville O. Rice

### THE SERIES, ITS GOALS AND OBJECTIVES

To promote awareness of this Kansas wildlife and to recognize the talent of Kansas Wildlife artists, the Kansas Wildlife Art Series was established in 1984. The series is an annual, limited edition sale of signed and numbered art prints and stamps depicting Kansas wildlife. Each print in the series will be reproduced from an original painting by a noted Kansas wildlife artist. Nationally-known wildlife artist and native Kansan M. Wayne Willis of Wichita was selected to create the first painting in the series, titled "Kansas Covey Rise - Bobwhite Quail."

### THE ARTIST, HIS PAINTING

Orville O. Rice, a resident of Topeka, has had a life-long interest in painting birds and other wildlife. He pursued his interest while studying architecture at the University of Texas, and throughout his thirty-three-year career in architecture. Bird paintings completed during his college years are permanently housed in the Texas Memorial Museum in Austin. He has provided covers and illustrations for "Texas Game and Fish Magazine," has illustrated six books, and has provided illustrations for various issues of the *Living Bird*, a journal of the Cornell Laboratory of Ornithology. His painting of the greater prairie chicken was presented to the Topeka Public Library in 1980.



Since his retirement in 1981, Mr. Rice has devoted most of his time to painting wildlife entirely in water color. He has

exhibited paintings in museums and art galleries across the country, and in shows sponsored by the National Audubon Society, Wilson Ornithological Society, and the American Ornithologists Union.

### THE PRINT

The design is printed in full color on rag paper stock. Image size, 20<sup>5</sup>/<sub>8</sub>" x 14<sup>3</sup>/<sub>4</sub>". Each print will be individually presented in a protective portfolio complete with artist's biography, along with a statement of the Kansas Wildlife Art Series' long range objectives. The print will be signed and numbered. There will be a limited edition of 1,000 prints available. These prints retail for \$100.00 each. Unsigned stamps will be available individually at \$10.00 each.

### HOW TO ORDER

Quantity	Amount
_____ Print (Signed and Numbered) (\$100.00@)	_____
_____ Individual Stamp (\$10.00@)	_____
_____ Print (Signed and Numbered) & Stamp (\$110.00@)	_____
_____ Block of 6 Stamps (\$60.00 per block)	_____
_____ Shipping Charge-Prints Only (\$5.25@)	_____
(No shipping fee for stamps only)	_____
	Total Enclosed _____

Please Print all Information Clearly

Name \_\_\_\_\_  
 Address \_\_\_\_\_ City \_\_\_\_\_  
 State \_\_\_\_\_ Zip \_\_\_\_\_ Phone ( ) \_\_\_\_\_

Send Check or Money Order to:  
 KANSAS WILDLIFE SERIES, Travel, Tourism and Film Services, KDED  
 503 Kansas Ave., 6th Floor, Topeka, Kansas 66603

*Mike Hayde*

SENATE COMMITTEE

TESTIMONY

HB 2928

KANSAS WILDLIFE ART SERIES

Cathy L. Kruzic, Travel, Tourism & Film Services Director  
Kansas Department of Economic Development

March 24, 1986

EXHIBIT H

3/24/86  
S. G.O.



*125 and coming alive!*

JOHN CARLIN  
Governor

CHARLES J. "Jamie" SCHWARTZ  
Secretary

Mr. Chairman and Members of the Committee:

Thank you for allowing me this opportunity to appear before this committee regarding the Kansas Wildlife Art Series, H.B. 2928.

In the interest of time, please let me summarize how this program came into existence and how it has fared since its creation.

Two years ago, Representative Denise Apt proposed that a Kansas Wildlife Art Series be established to enhance the outdoor image of Kansas. After discussion, with the Kansas Department of Economic Development, Ways and Means Subcommittee, it was agreed that the Travel, Tourism and Film Services Division could best promote and operate such a program through public service ads and similar programs. Further, it was recommended that this program be funded through a self-generating fee fund.

Subsequently, goals, objectives and guidelines for this program were established. After a review process in 1985, Mr. Wayne Willis of Wichita was selected as the first featured artist for the program. To date, sales of his painting of bobwhite quail, entitled, "Kansas Covey Rise" have totaled \$21,350. The second artist in the series, the late Mr. Orville Rice of Topeka was selected for his mallard painting, entitled, "Prairie Pond Mallards," with sales totaling approximately \$7,350 to date.

The following subjects are scheduled for upcoming years: 1986--Wild Turkey; 1987--Pheasant; 1988--Prairie Chicken; 1989--Red Tail Hawk.

Finally, the objectives of the Kansas Wildlife Art Series are simple and as follows:

- 1.) To increase public awareness of Kansas wildlife and related sporting opportunities.
- 2.) To identify and recognize the many Kansas artists specializing in wildlife art.
- 3.) To respond to requests of Kansas wildlife art collectors for such a series.
- 4.) To pay all expenditures related to the production, marketing and distribution of the series exclusively through sales of the stamps and prints.

Mr. Chairman and members of the committee, I urge your support of HB 2928 as amended.