

MINUTES OF THE HOUSE COMMITTEE ON COMMUNICATION, COMPUTERS AND TECHNOLOGYThe meeting was called to order by Representative Jayne Aylward at  
Chairperson3:30 ~~xxx~~/p.m. on January 22, 1986 in room 522-S of the Capitol.

All members were present except:

Representative Chronister (excused)

Representative Erne (excused)

Representative Roper (excused)

Committee staff present:

Lynne Holt, Legislative Research Department

James A. Wilson, III, Senior Assistant Revisor

Jean Mellinger, Secretary to the Committee

Conferees appearing before the committee:

Darrell L. Eklund, Kansas Water Data Control Committee

Janet Marquis, Department of Health and Environment

Wm. Boyd Allen, Division of Water Resources

David Larson, Kansas Corporation Commission

Chairman Jayne Aylward opened the meeting. Representative Friedeman moved that the minutes of the January 15 meeting be approved. Representative Sifers seconded the motion. The motion carried.

Chairman Aylward presented a copy of a draft bill concerning the Kansas Advanced Technology Commission (Attachment 1). Representative Dean made a motion that the committee introduce the bill. Representative Sifers seconded the motion. The motion carried.

The Chairman introduced Darrell L. Eklund who gave a brief background on the water database subject and reported on the Kansas Water Data Control Committee status and the Kansas Water Database status. He stated that the CCT Committee in 1983 in reviewing the data processing budgets of various state agencies was concerned about lack of coordination of all agencies concerned with water. They asked the water-related agencies to share as much as possible and not duplicate their records. The original agencies were the Division of Water Resources, Kansas Water Office, Kansas Corporation Commission, Kansas Geological Survey, and Kansas Department of Health and Environment. Three additional agencies are now participating, the Kansas Fish and Game Commission, a representative from the Ground Water Management District, and U.S. Geological Survey. In FY 84 primary attention was on coordination of the water-related DP plans and the budgets for presentation to this committee. In FY 85 two primary work activities included identifying and obtaining communication and computer equipment needed to utilize Kansas Water Database and standardization of computer files. In FY 86 Governor Carlin requested that someone from the Water Office be designated as chairman of the committee. The data processing budgets of the various agencies, whether requests were compatible with the Kansas Water Database and with what is in the State Water Plan, and the status of the Kansas Water Database were reviewed again; and certain recommendations were made. He stated that some of the important aspects of the Kansas Water Database were that it involves the coordination and sharing of water-related information among planning, regulatory, and research agencies; it minimizes duplication of data and resources; and it allows immediate access to data by the agencies across the state, or is designed to do that. He explained the current status of the Kansas Water Database (Attachment 2).

Representative Brown asked concerning No. 7 Hazardous Waste Inventory, if that is the only one for hazardous waste. Mr. Eklund was uncertain. The Chairman said the Health and Environment speaker would probably clarify that.

Representative Friedeman asked who has the authority to help push this along to its completion. Mr. Eklund said that in the final analysis it is up to the specific agency and the resources they have. Representative Friedeman said that several of these files say "manual" in the report and asked if that is a bigger problem than if it is already on the computer and was told that generally speaking the answer is yes. Representative Friedeman asked if he had set a target date personally to complete these files. Mr. Eklund said he had not personally and the committee has not. Representative Friedeman asked if the Water Authority is pushing for this for planning purposes. Mr. Eklund is certain that several members of the Water Authority are very interested.

Chairman Aylward asked if any of this information is over at the Kansas Biological Survey and if they are integrating that information into this also. Mr. Eklund answered that it is possible that there is some additional information that would be useful, but currently

CONTINUATION SHEET

MINUTES OF THE HOUSE COMMITTEE ON COMMUNICATION, COMPUTERS AND TECHNOLOGY

room 522-S, Statehouse, at 3:30 ~~xxx~~/p.m. on January 22, 1986.

they are not integrating this. They are considering that type of question. The Fish and Game Commission may have files that would be of interest as well as the U.S. Geological Survey. Chairman Aylward said she was interested in whether they had any of this computerized so it wouldn't have to be computerized again. Janet Marquis said that Health Environment has a biological file which is in the Water Database.

Mr. Eklund said the committee is working on procedures for access to the files such as security and allowing other agencies to use the files but not change the files.

Janet Marquis reported on the status of the Kansas Department of Health and Environment as far as Kansas Water Database is concerned (Attachment 3) and stated that the stages involved included building files, putting data in, linking files together, having them in usable form, and maintaining the files.

Representative Friedeman asked, with two different software packages, if someone comes in with data files from somewhere else from the same site, how the connection is made. She said the township range section is the leading description which is part of the standards set up. Representative Friedeman inquired about Mr. Eklund's statement that other agencies were not allowed to add to the files. She said they could add to the Station Master Files but not to the other files.

Janet Marquis explained that the spills file is information about spills of toxic materials. The hazardous waste inventory contains information about transporters, storers, and disposers of hazardous waste.

Representative Campbell inquired what was included in underground storage tanks and was told it included any underground tanks.

Representative Friedeman asked about the squares for KGS and Joint KCC. Janet Marquis said they had been meeting with the KCC to see if their files should be linked together in some cases. They will be doing the same thing with the Kansas Geological Survey. Representative Friedeman asked if in the discussions so far they were finding some things. She said there was some duplication in collection of data or some of the items in a particular piece of information.

Representative Brown inquired if in the hazardous waste inventory and the fact that they are talking about the underground storage tanks and the coordination of that data, they would be using that with the Office of Emergency Preparedness and was told that they were required by the Federal Government to have this information and the data is really stored on a federal computer. Representative Brown asked if they were particularly relating it to ground water protection and was told they were.

Representative Campbell asked what was meant by "Joint KCC." Janet Marquis said the responsibilities of the Department of Health and Environment and KCC were closely related.

Boyd Allen reported on four files (Attachment 4). These included Surface Water and Ground Water which is about water use, Surface and Ground Water Appropriations which refers to wells used for pointsof diversion, Surface and Ground Water Temporary Appropriations, and Inventory of Dams.

Representative Helgerson asked what they planned to do with the inventory of dams. Mr. Allen said they plan to put them on the computer because they have about 5,000. Representative Helgerson asked if they were just putting a listing or a listing characterized by "This is a structurally-sound dam." He was told they would be putting in a lot of information about how high, how much water, etc. Mr. Allen said there was a dam inspection program and this information will probably be put in. Representative Helgerson asked if they have an accurate inventory of the dams, water levels, and hazards that might be involved and was told they have this on paper but nothing accessible.

Representative Campbell asked how small they were going on recording the dams and was told 1,500 feet or less.

Chairman Aylward asked what was in their fiscal 87 budget. Mr. Allen said they had a programmer II, a hydrologist II, and a clerk. Chairman Aylward asked if they needed all three to get the surface and ground water portion on and was told they did for that and the temporary appropriations. Chairman Aylward asked what they were going to need to get the dam inventory on. Mr. Allen said they will need \$10,000 to do the systems work and design the system. Then they will have to analyze that, and they may be able to do a considerable

CONTINUATION SHEET

MINUTES OF THE HOUSE COMMITTEE ON COMMUNICATION, COMPUTERS AND TECHNOLOGY,  
room 522-S, Statehouse, at 330 ~~am~~/p.m. on January 22, 1986

amount with the new programmer and the programmer they now have. The biggest cost will be getting the paper documents into suitable form so they can be entered into the computer and entering them.

Representative Friedeman said they had indicated that surface and ground water use is complete since 1981 and asked what value there would be to get the data prior to 1981. He was told this would be historical data only to pick up trends etc. and for statistical purposes. Representative Friedeman asked if it was quite expensive and was told it is on microfilm now and would cost approximately \$130,000. Representative Friedeman asked if someone was doing some research, if they could get to the microfilm and was told they could. The field offices have the original documents and the Division of Water Resources has the microfilm.

Representative Helgerson said that it had been mentioned that engineers and others request information from them and asked if they have set up any kind of a fee system for this. Mr. Allen said they have that they have a fund where payments for information are put and data processing expense is paid from this.

Mr. Allen invited anyone to come over and see their system.

Dave Larson reported on the current status of the KCC as it pertains to Water Database and gave a time frame to complete it. He explained the items on Attachment 2 under the KCC and said the plans were made with existing staff and data processing resources.

Chairman Aylward asked if they have any budget requests in for this fiscal year for any additional staff and was told they didn't. She asked why they were using the ADABAS software when everyone else was using the the TOTAL software. Mr. Larson said that it was a historical problem, that before these agencies got together, the KCC had adopted ADABAS. They both do an adequate job. They have pursued ways to bridge the incompatibility of the two systems and didn't switch because of the natural reluctance to redo something that is already up and running, the inability to finance the retraining and development on the new database software system, and if they did go to ADABAS they would have to build bridges back to the agencies they are sharing with on ADABAS.

Representative Friedeman said that apparently KCC has other priorities than completing this task and asked Mr. Larson to elaborate on that. Mr. Larson said that predominately the 1988 date is the choice they made to do all this work within existing staff levels. Representative Friedeman asked what cost would be involved if they speeded this up. He said the cost as is, is \$20,280 and if they speeded it up the estimate was \$69,887.

Representative Helgerson asked about the recommendation for the additional staff following the completion of this task if they speeded it up and was told they would be used to work on the Fresh and Usable Water file and for maintaining the system.

Representative Friedeman asked where the KGS DATA GENERAL was located. Mr. Larson said it was in the Kansas Geological Survey offices on the West Campus of K.U. Representative Friedeman asked if anyone from that agency was present and suggested they be invited for sometime next week.

The meeting adjourned at 4:50 p.m.

The next meeting of the Committee will be held at 3:30 p.m. on Tuesday, January 28, 1986.





DRAFT BILL NO. \_\_\_\_\_

For Consideration by Committee on  
Communication, Computers and Technology

AN ACT concerning the Kansas advanced technology commission;  
relating to the composition thereof; amending K.S.A. 74-5035  
and repealing the existing section.

Be it enacted by the Legislature of the State of Kansas:

Section 1. K.S.A. 74-5035 is hereby amended to read as follows: 74-5035. (a) The commission shall consist of ~~13~~ 14 commissioners. The speaker of the house of representatives, minority leader of the house of representatives, president of the senate, minority leader of the senate, president of Kansas state university, president of Wichita state university, chancellor of the university of Kansas and president of Pittsburg state university shall each appoint one commissioner, who shall serve at the discretion of the appointing authority. Five commissioners shall be appointed by the governor. These five commissioners shall represent advanced technology industries and associated businesses and at least one of the five commissioners shall be a representative of a small business enterprise. The secretary of economic development shall serve in the remaining position as a commissioner on the commission.

(b) The term of each commissioner appointed under this section by the governor shall be for four years, except that, of such commissioners first appointed, two commissioners shall be appointed for terms of two years and three commissioners shall be appointed for terms of four years. A member appointed or designated to fill a vacancy arising other than by expiration of such member's term shall be appointed for the unexpired term of the commissioner such member is to succeed. A commissioner shall be eligible for reappointment.

(c) Commissioners shall receive amounts provided in

(Attachment 1)  
1/22/86 Hs.CCT

subsection (e) of K.S.A. 75-3223 and amendments thereto.

(d) The commission shall elect a chairperson and vice-chairperson from its members. The secretary of economic development ~~or-the-secretary's-designee~~ shall designate a person to serve as secretary for the commission.

(e) The commission shall adopt such rules and regulations governing its procedure and research matching grant procedures as it may consider necessary or advisable and shall keep a record of its proceedings, which record shall be open to inspection by the public at all reasonable times.

Sec. 2. K.S.A. 74-5035 is hereby repealed.

Sec. 3. This act shall take effect and be in force from and after its publication in the statute book.

Agency	File Name	Current Description of Files					Plans Based on Continuation of Existing D.P. Funding			Plans Based on Approval of Requested 1987 D.P. Funds		
		Type of File	Storage Medium	Location of File	Database Used	KWDB Status <sup>a/</sup>	Location of File	Database to be Used	Completion Date	Location of File	Database to be Used	Completion Date
Kansas Geological Survey	1. Bedrock Depth	Computer	Disk pack	KGS DATA GENERAL	ACCESS	Incomplete	---	---	---	DISC	TOTAL	FY 19__
	2. Water Level Information	Computer	Disk pack	KGS DATA GENERAL	ACCESS	Incomplete	---	---	---	DISC	TOTAL	FY 19__
	3. Brine Water Chemistry	Partial computer	Tape, Paper	KGS DATA GENERAL	None	Incomplete	---	---	---	DISC	TOTAL	FY 19__
	4. Groundwater Quality Data	Partial computer	Disk pack, Tape, Paper	KGS DATA GENERAL	None	Incomplete	---	---	---	DISC	TOTAL	FY 19__
Division of Water Resources	1. Surface and Groundwater (Water Use)	Computer	Disk pack	DISC	TOTAL	Completed <sup>b/</sup>						
	2. Surface and Groundwater (Appropriatic	Computer	Disk pack	DISC	TOTAL	Completed						
	3. Surface and Groundwater (Temp. Approp.)	Manual	Paper	DWR	None	No work has begun	---	---	---	DISC	TOTAL	FY 1987
	4. Dam Inventory	Manual	Paper	DWR	None	No work has begun	---	---	---	---	---	---
Kansas Water Office	1. Water Information Catalogue	Computer	Tape	DISC	None	Completed						
Kansas Corporation Commission	1. Oil/Gas Intents-to-Drill	Computer	Disk pack	KGS DATA GENERAL	None	Incomplete	DISC	ADABAS	FY 1988	DISC	ADABAS	FY 1988
	2. Oil/Gas Completion Reports	Computer	Disk pack	KGS DATA GENERAL	None	Incomplete	DISC	ADABAS	FY 1988	DISC	ADABAS	FY 1988
	3. Oil/Gas Plugging Records	Computer	Disk pack	KGS DATA GENERAL	None	Incomplete	DISC	ADABAS	FY 1988	DISC	ADABAS	FY 1988
	4. Oil/Gas Operators Licensing Records	Computer	On-line disk	DISC	ADABAS	Completed						
	5. Fresh and Usable Water Base	---	---	---	---	Incomplete	---	---	---	---	---	---

(Attachment 2)  
1/22/86 Hs.CCT



Agency	File Name	Current Description of Files					Plans Based on Continuation of Existing D.P. Funding			Plans Based on Approval of Requested 1987 D.P. Funds		
		Type of File	Storage Medium	Location of File	Database Used	KWDB Status	Location of File	Database to be Used	Completion Date	Location of File	Database to be Used	Completion Date
Department of Health and Environment	1. Salt Water Ponds	Computer	On-line disk	DISC	TOTAL	Completed						
	2. Salt Water Injection Wells	Computer	On-line disk	DISC	TOTAL	Completed						
	3. Water Well Records	Computer	On-line disk	DISC	TOTAL	Completed <sup>a/</sup>						
	4. Groundwater Quality	Computer	Tape	DISC	None	Incomplete	---	---	---	DISC	TOTAL	FY 1987
	5. Liquified Petroleum Storage Wells	Manual	Paper	KDHE	None	Incomplete	---	---	---	DISC	TOTAL	FY 1987
	6. Salt Solution Mining Wells	Manual	Paper	KDHE	None	Incomplete	---	---	---	DISC	TOTAL	FY 1987
	7. Hazardous Waste Inventory	Computer	On-line disk	EPA	?	Incomplete	---	---	---	DISC	TOTAL	FY 1987
	8. Waste Water Source Inventory	Computer	On-line disk	EPA	?	Incomplete	---	---	---	---	---	---
	9. Effluent Quality Data Set	Computer	On-line disk	EPA	?	Incomplete	---	---	---	DISC	TOTAL	FY 1987
	10. Drinking Water Supply Inventory	Computer	On-line disk	EPA	?	Completed						
	11. Drinking Water Quality Data Set	Computer	Tape	DISC	None	Incomplete	---	---	---	DISC	TOTAL	FY 1987
	12. Surface Water Quality	Computer	Tape	DISC	None	Incomplete	---	---	---	DISC	TOTAL	FY 1987
	13. Biological Data	Computer	Tape	EPA	None	Incomplete	---	---	---	DISC	TOTAL	FY 1988
	14. Station Master File	Computer	On-line disk	DISC	TOTAL	Completed						
	15. Underground Storage Tanks	Manual	Paper	KDHE	None	Incomplete	---	---	---	DISC	TOTAL	FY 1987

<sup>a/</sup> Kansas Water Database (KWDB) status.

<sup>b/</sup> This file contains data for 1981 and subsequent years.

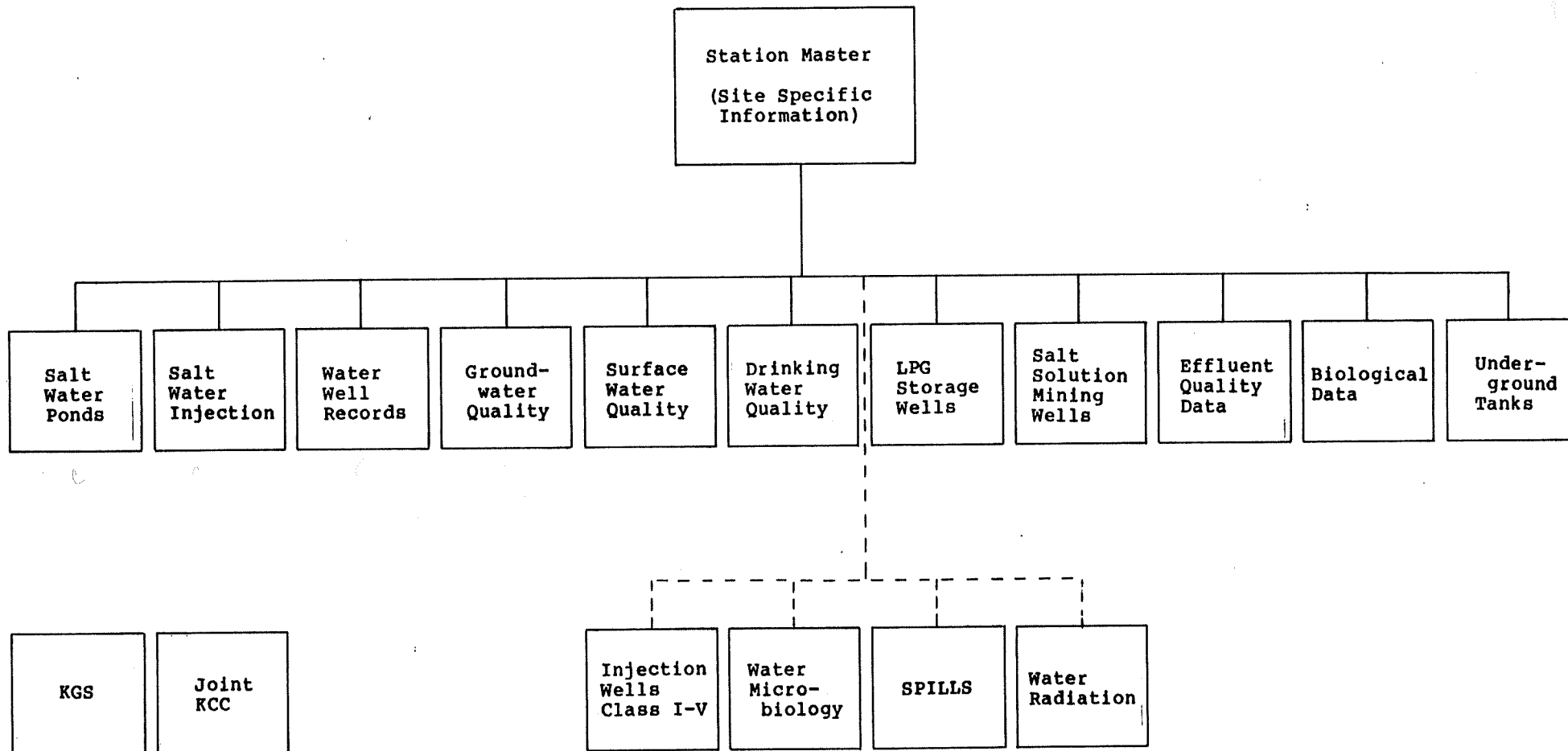
<sup>c/</sup> This file contains data for 1974 and subsequent years.

KANSAS DEPARTMENT OF HEALTH AND ENVIRONMENT

KANSAS WATER DATABASE INFORMATION

JANUARY 22, 1986

*(Attachment 3)*  
*1/22/86 Hs.CCT*



RELATED INFORMATION

Alias File

Chemical Analysis System

Coding Information -- e.g.,  
county codes, use numbers, etc.

Hazardous Waste Inventory

Drinking Water Supply Inventory

Waste Water Source Inventory

O I L F I E L D M A S T E R M E N U

PLEASE CHOOSE THE OPTION DESIRED:

- 1: SALT WATER PONDS
- 2: POP-OFF PITS
- 3: INJECTION WELLS
- 4: EMERGENCY PONDS
- 5: PASSWORD ASSIGNMENT FACILITY
- 6: WATER WELL SYSTEM
- 7: STATION MASTER SYSTEM
- 8: ALIAS MASTER SYSTEM
- 9: INORGANIC CHEMICAL SYSTEM

PA2 TO TERMINATE

OPTION: 7

KANSAS DEPARTMENT OF HEALTH AND ENVIRONMENT

KANSAS WATER DATABASE INFORMATION

JANUARY 22, 1986

O I L F I E L D M A S T E R M E N U

PLEASE CHOOSE THE OPTION DESIRED:

- 1: SALT WATER PONDS
- 2: POP-OFF PITS
- 3: INJECTION WELLS
- 4: EMERGENCY PONDS
- 5: PASSWORD ASSIGNMENT FACILITY
- 6: WATER WELL SYSTEM
- 7: STATION MASTER SYSTEM
- 8: ALIAS MASTER SYSTEM
- 9: INORGANIC CHEMICAL SYSTEM

PA2 TO TERMINATE

OPTION: 7

O I L F I E L D O N L I N E M E N U

PLEASE CHOOSE THE OPTION DESIRED:

- 1: STATION MASTER ADD
  - 2: STATION MASTER CHANGE
  - 3: STATION MASTER DELETE
  - 4: STATION MASTER INQUIRY
- PA2 TO TERMINATE THIS FACILITY

OPTION: 4

STATION MASTER SYSTEM  
RETRIEVAL SCREENS

SITE / OR AREA TO BE RETRIEVED

ENTER TRSEXT: 1007E280023  
ENTER TRS :  
ENTER TR :

(GOES DIRECTLY TO REQUESTED RECORD)  
(LISTS ALL STATIONS IN SECTION)  
(LISTS ALL STATIONS IN TWSHP/RNG)

ENTER NEXT CHOICE



```

*****          *** KDHE STATION MASTER DISPLAY ***
*FOR MORE INFO CALL:*          -----FLAGS-----
*(913)862-9360 X264 *  --STATION-- FRACTION CNTY W
*****          T R S EXTK 1 2 3 4
          1007E280023 E SENE 081
ASSGN
PROJ-   QUAL1   QUAL2   TYPE-   REACH NUMBER
WLOGS                                     GRND
MILES--- STATE   LAT DEGREES-   LONG DEGREES
          20      039.15537930 096.64761598
          ---LAT---   ---LONG---
          DDDMMSSSS   DDDMMSSSS
          0390919.0   0963851.0

```

-----R E M A R K S-----

-----L O C A T I O N D E S C R I P T I O N-----  
FROM W EDGE OF MANHATTAN 1 1/2 MI SW 1/2 MI W 3/4 MI N

HIT ENTER

ALIAS MENU SCREEN

ACTION CODES: A-ADD D-DELETE I-INQUIRY

ENTER ACTION CODE: A

ALIAS: PWSCHANUTE-1

(MUST START WITH H, D, P OR S)

TRSEXT: 2708E050001

W A T E R   W E L L   O N L I N E   S Y S T E M

CHOOSE THE OPTION DESIRED:

- 1: ADD A RECORD
- 2: CHANGE A RECORD
- 3: DELETE A RECORD
- 4: INQUIRY
- 5: PASSWORD ASSIGNMENT
- 6: OIL FIELD SYSTEM

OPTION: ④

PA2 TO TERMINATE

WATER WELL SYSTEM  
RETRIEVAL SCREENS

SITE / OR AREA TO BE RETRIEVED

ENTER TRSEXT:		(GOES DIRECTLY TO REQUESTED RECORD)
ENTER TRS :	1007E28	(LISTS ALL WATER WELLS IN SECTION)
ENTER TR :		(LISTS ALL WATER WELLS IN TWNSHP/RNG)

	T.R S EXTK	FRACTN	US E	WELL DPTH	STA TUS	COMP DATE	CONT NO
1.	1007E280001	SWSWS	01	0070	1	042484	234
2.	1007E280002	SWSWSW	01	0058	1	022081	0182
3.	1007E280003	SWSWSW	01	0068	1	042484	234
4.	1007E280004	SWSWSW	01	0060	1	022381	0182
5.	1007E280005	SWSWSW	01	0070	1	041080	0237
6.	1007E280006	SWSWSW	01	0071	1	072875	0237
7.	1007E280007	SESESE	01	0050	1	050376	0182
8.	1007E280008	S2SWSW	02	0064	1	060178	0323
9.	1007E280009	SWSWNE	02	0070	1	092982	0138

ENTER 0 TO CONTINUE / OR RECORD NUMBER: 0

	T R S EXTK	FRACTN	US E	WELL DPTH	STA TUS	COMP DATE	CONT NO
1.	1007E280010	SWSWN	01	0065	1	083077	0182
2.	1007E280011	NWNWNW	01	0070	1	052477	0182
3.	1007E280012	NWSWSW	01	0075	1	072675	0237
4.	1007E280013	SESENW	01	0060	1	040882	0182
5.	1007E280014	SESENW	01	0060	1	040982	0182
6.	1007E280015	NESENE	01	0076	1	050577	0237
7.	1007E280016	NWNWNW	01	0070	1	052577	0182
8.	1007E280017	NWNWNW	01	0065	1	052577	0182
9.	1007E280018	NWNWNW	01	0070	1	052477	0182

ENTER 0 TO CONTINUE / OR RECORD NUMBER: 0

	T R S EXTK	FRACTN	US E	WELL DPTH	STA TUS	COMP DATE	CONT NO
1.	1007E280010	SWSWN	01	0065	1	083077	0182
2.	1007E280011	NWNWNW	01	0070	1	052477	0182
3.	1007E280012	NWSWSW	01	0075	1	072675	0237
4.	1007E280013	SESENW	01	0060	1	040882	0182
5.	1007E280014	SESENW	01	0060	1	040982	0182
6.	1007E280015	NESENE	01	0076	1	050577	0237
7.	1007E280016	NWNWNW	01	0070	1	052577	0182
8.	1007E280017	NWNWNW	01	0065	1	052577	0182
9.	1007E280018	NWNWNW	01	0070	1	052477	0182

ENTER 0 TO CONTINUE / OR RECORD NUMBER: 1

WATER WELL SYSTEM

COUNTY	LEGAL DESCRIPTION	FRACTION	WELL OWNER	DWR APP NUMBER
161	T R S EXT 1007E280010	SWSWNW		

WELL DEPTH	ELEVATION	FORMATION	*DEPTH GRNDWTR ENCTR*	STATIC WATER LEVEL
0065	0000	0000	FEET FEET FEET	0028

\*PUMP TEST DATA\*

WATER DEPTH	HOURS PUMPD	YIELD GPM	EST. YIELD	WELL USE	CHEM ANAL	TYPE CASING	***** CASING *DIA. FT.	***** DIA. FT.
			0050	01	N			

***CASING***		TYPE OF SCREEN	***** SCREEN INTERVALS *****							
DIA. FT.	SCREEN	FROM TO	FROM TO	FROM TO	FROM TO	FROM TO	FROM TO	FROM TO	FROM TO	
		0055	0065							

GROUT MATERIAL	***** GROUT INTERVALS*****	NEW WELL	COMPT. DATE	CONTRAC. LIC. NUM.	NEAR CNTM
FROM TO	FROM TO	1	083077	0182	

HIT ENTER

- 1:CLAY      6:VF SD    11:GRAVEL    16:VC GR    21:SH&LS    26:CHTY DOL    31:CALICHE
- 2:SILT      7:F SD      12:VF GR    17:SD&GR    22:CHTY LS    27:COAL        32:FLINT
- 3:SILTY CL    8:M SD    13:F GR    18:BLDR    23:SS        28:ROCK        33:CHERT    36:GYP
- 4:SDY CL    9:C SD    14:M GR    19:SH      24:SS&SH    29:ROCK&SD    34:PYRITE
- 5:SAND      10:VC SD    15:C GR    20:LS      25:DOLOMITE    30:ROCK&CL    35:CLAY GR

DEPTH LOG	DEPTH LOG	DEPTH LOG
0000-		
0035    01		
0050    05		
0065    17		

HIT ENTER *hit enter key*



O I L F I E L D O N L I N E M E N U

PLEASE CHOOSE THE OPTION DESIRED:

- 1: INJECTION WELL ADD
  - 2: INJECTION WELL CHANGE
  - 3: INJECTION WELL DELETE
  - 4: INJECTION WELL INQUIRY
- PA2 TO TERMINATE THIS FACILITY

OPTION: (4)

O I L F I E L D A N D E N V I R O N M E N T A L  
G E O L O G Y

F1	F2	F3	F4	SEC	TWN	RNG	DIR	COUNTY	LEASE NAME	WELL NUMBER
		NW	NE	20	29	08	E	008		

PERMIT NUMBER D07259	COMPANY NAME	COMPANY NUMBER BB80	ACTION DATE 061959	RIV BAS AL	WELL STATUS 2	TYPE ACTION 1	PRODUCING FORMATION 44
----------------------------	-----------------	---------------------------	--------------------------	------------------	---------------------	---------------------	------------------------------

INJECTION FORMATION 44	UPPER INJ-DP. 2776	SURFACE PIPE-DP. 2776	CASING SEALED B	ADD-PIPE PROTECTN 0	MAX. PRESSURE 0000	BBLs BRINE 00360
------------------------------	--------------------------	-----------------------------	-----------------------	---------------------------	--------------------------	------------------------

CHLORIDES 000000	TONS OF SALT 00000	MIT	MIT DATE 000000	ELEVATION 0000	FLUID LEVEL	SEALED BY	INVEST.
---------------------	--------------------------	-----	-----------------------	-------------------	----------------	--------------	---------

TYPE  
SAMPLE

FOUND--PLEASE PRESS ENTER

*hit enter key*

### Salt Water Injection Wells and Salt Water Ponds

Over 18,000 records containing legal location, county, docket numbers of KDHE and KCC, company number, approval date, action taken, lease name, well number, river basin, well status, type of well, type action, producing formation, upper injection depth, injection formation, surface casing depth, casing sealed, additional pipe protection, maximum pressure, MIT, MIT date, barrels of brine produced, chlorides, tons of salt injected, pond sealed by, inspection date, elevation, fluid level, investigation and type sample are in this file.

### Water Well Records

There are currently 47,000 records in this file dating from the present back to late 1974. The file contains legal location, county, depth of well, use of well, well type, static water level, date drilled, contractors number, screened intervals, elevation, producing formation, depth and thickness of geologic formations drilled and whether a groundwater chemical analysis was conducted on the waters. Approximately 5,000 water wells are constructed, reconstructed or plugged in Kansas per year. By statute KDHE is responsible to track each water well from reported completion to its final plugging.

### Groundwater Quality

This file contains inorganic chemical analysis, heavy metals, specific conductance, and other chemical constituents. Each record is to be listed by legal location, date sampled, owner, depth of sample, time of sample, matrix and other identifiers.

### Drinking Water Quality

The drinking water quality data set is used to compare the performance of treatment facilities to a performance standard for a specific period of time. The information is similar to that in the groundwater quality files.

### Surface Water Quality

The Department/Bureau of Water Protection operates a surface water quality monitoring network of approximately 130 sampling sites across the state. This network is used to determine water quality problems as well as verify the effectiveness of a pollution control intervention. This monitoring activity results in approximately 38,000 individual observations per year.

### Liquified Petroleum Storage Wells (LPG)

There are currently 697 LPG storage wells, 4 natural gas storage wells, and 1 mine used for storage of LPG. Each LPG site has numerous monitoring wells (323 total) which are schedule-sampled for several parameters. The information allows the evaluation of site conditions as well as the size of the salt storage jugs.

### Salt Solution Mining Wells

There are approximately 100 salt solution mining wells in Kansas. This industry is regulated to assure salt roof integrity of each salt cavity and to protect groundwater resources from contamination and pollution due to the operation of these wells and associated distribution systems.

Numerous private groundwater and monitoring wells are in and around each site. These are sampled routinely to check for any groundwater quality degradation trends to assure salt solution mining wells are functioning correctly.

### Effluent Quality Data

The Effluent Quality data set contains information on permitted facility performance. Data include date of sample, pollutant concentration, wastewater volume and total mass of pollutant discharged. At the present time this file is mainly used to determine facility compliance with permitted effluent limits for a specific period of time. It has been used on occasion for specific studies, such as determination of expected performance of a generic treatment process such as a trickling filter.

### Biological Data

Biological water quality assessments provide an integrated indication of seasonal and spatial perturbations of a watershed. The Department maintains a biological sampling network consisting of approximately 100 sites across the state. Under this monitoring activity, samples of the aquatic organisms are collected, identified and analyzed. This information is then used to assess the overall quality of the water resource.

### Underground Storage Tanks

This file will contain information on underground storage tanks in the state. Data collection instruments have been designed that will integrate state data with EPA required data. The Department is proceeding to collect this data.

### Drinking Water Supply Inventory

The Drinking Water Supply Inventory is an inventory of physical facility information such as name, location, treatment process type, and capacity.

### Waste Water Source Inventory

The Wastewater Source Inventory contains federal and state permit numbers, name of the source, the type of source (municipal, industrial, commercial and agricultural), location (city, county and river basin), limited design information (design capacity and type of treatment process) and permit conditions (performance standards and compliance schedules). There are approximately 4000 permitted wastewater facilities in this file.

### Hazardous Waste Inventory

The Hazardous Waste Inventory contains information about transporters, storers, and disposers of hazardous waste.

THE PROPOSED KANSAS WATER  
DATA BASE

Submitted to

House Standing Committee on Communications,  
Computers and Technology

On

January 24, 1984

By

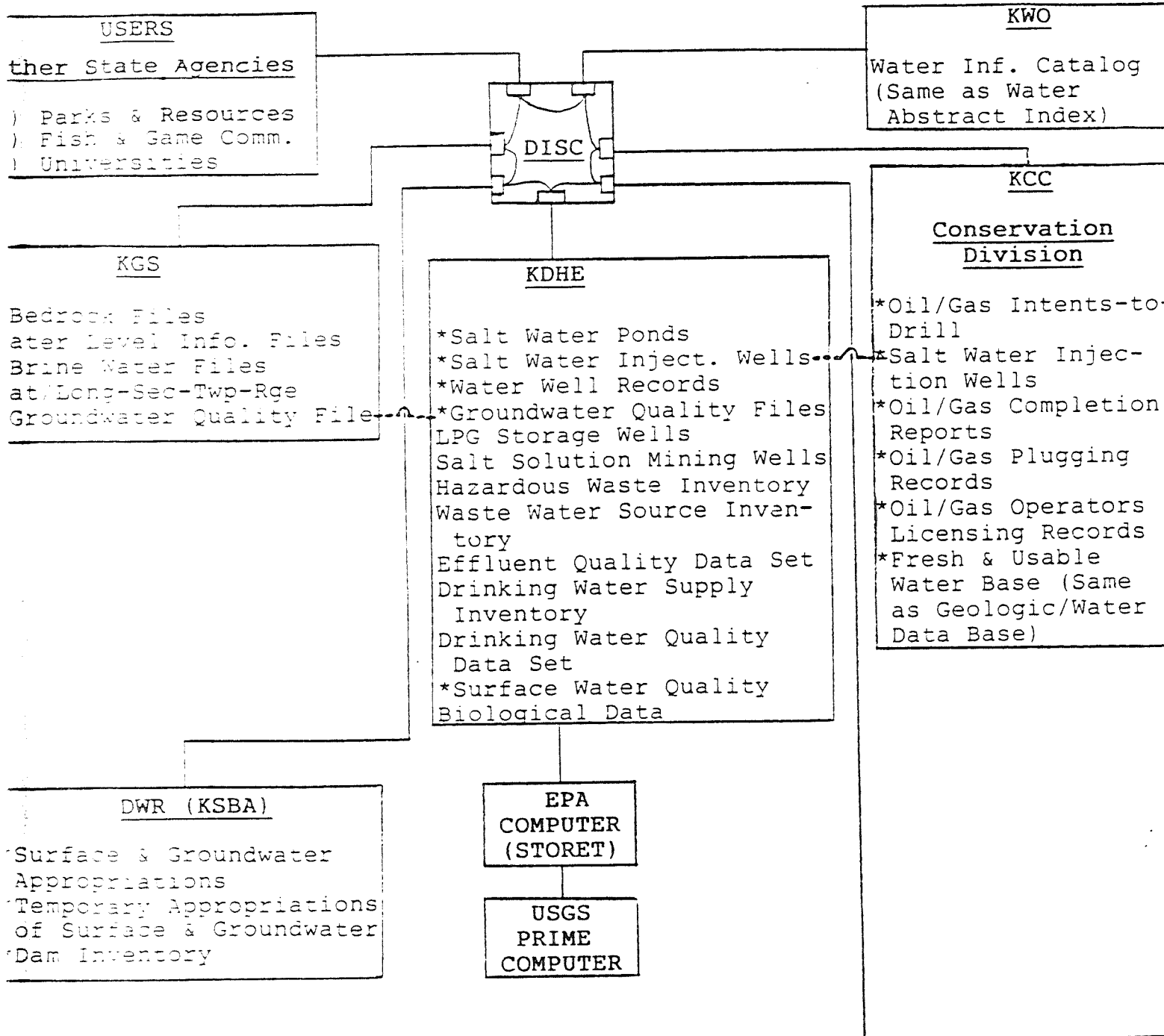
Dwight Brinkley, Chairman of the Kansas Water Control Committee  
comprised of Kansas Geological Survey, Kansas State Board of Agriculture  
(Division of Water Resources), Kansas Water Office, Kansas Corporation  
Commission (Conservation Division), and Kansas Department of Health and  
Environment (Division of Environment)

(Attachment 4)  
1/22/86 Hs. CCT

Schematic of Proposed Kansas Water Data Base

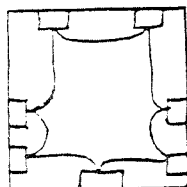
FISCAL YEAR 1985

January 24, 1984



Legend

Joint agency responsibilities -----  
 \* "ON-LINE" Files at DISC  
 \* "ON-TAPE" Files at DISC  
 \* Files at DISC "LINKED"  
 (Accessible to other State agencies)



By Chairman of Kansas Water Data Control Committee, Dwight Brinkley.

STATE OF KANSAS



John Carlin, Governor

KANSAS WATER OFFICE  
Joseph E. Harkins  
Director

Suite 200  
109 SW Ninth  
Topeka, Kansas 66612-1215  
913-296-3185

M E M O R A N D U M

Date: November 12, 1985  
To: Alden K. Shields, Director of the Budget  
From: *DLE* Darrel L. Eklund, Chairman  
Kansas Water Data Control Committee  
Subject: 1987 FY Data Processing Budgets for Water Agencies

Governor Carlin has requested that the Kansas Water Office reactivate the Kansas Water Data Control Committee. Consequently, the committee met on October 28, 1985, and discussed all portions of the 1987 FY data processing budgets that dealt with new systems or major enhancements related to the Kansas Water Database and/or the 1985 State Water Plan. The agencies represented at the meeting were the Division of Water Resources, Division of Information Systems and Communications, Groundwater Management District Association, Kansas Corporation Commission, Kansas Department of Health and Environment, Kansas Fish and Game Commission, Kansas Geological Survey, Kansas Water Office and the U.S. Geological Survey.

The Kansas Water Database Committee submitted a document entitled "The Proposed Kansas Water Data Base" to the House Standing Committee on Communications, Computers and Technology on January 24, 1984. Attached is a schematic diagram from that document which portrays the proposed Kansas Water Data Base. Funding received for FY 1985, to begin the implementation of the water database, was utilized to secure communication and data processing equipment needed to allow the agencies/entities to have the capability of accessing the water database. Now that this phase of implementation has been nearly completed (some testing of linkups still remains) the committee proceeded to examine the current status of the water database and its files. The attached table entitled "Status of Files for Kansas Water Data Base" shows the current status of the water database and shows our plans for FY 1987; subject to budgetary approval. It was very clear to the committee that the development of an integrated Kansas Water Database is dependent upon approval to



Mr. Alden K. Shields  
November 12, 1985  
Page 2

add a few new positions, so that essential data files and on-line systems development may take place. Without this approval, it will not be possible to implement an integrated water database.

The committee considered FY 1987 data processing budgets, in terms of their relevance to the Kansas Water Database and/or the 1985 State Water Plan; which included a subsection on the development of a State Groundwater Information System. It was the consensus of the committee that the following statement and recommendations be provided to DISC and to the Division of the Budget:

**Statement:**

The committee reaffirms its goal of integrating water-related data such that the data are located on the state system as diagrammed in the report of January 24, 1984, of the Kansas Water Data Control Committee. The data will be available to anyone accessing the state system. A station master file will be maintained; this file will list the type of data available and how it can be accessed.

**Recommendations:**

- Approval of one programmer, one terminal and associated processing costs for the on-line development of the Dam Inventory and Temporary Appropriations files for the Division of Water Resources.
- Approval of the hydrologist and clerk positions and associated costs for improving the reliability of the water use data for the Division of Water Resources.
- Approval of one and one-half programmers and \$36,000 processing costs for implementing several files needed for the Kansas Water Database for the Kansas Department of Health and Environment.

The on-line development of the Dam Inventory and Temporary Appropriations files by the Division of Water Resources is an important component of the Kansas Water Database, as outlined in January, 1984. Improving the reliability of the water use data is an important step in the implementation of the Groundwater Information System subsection of the 1985 State Water Plan. Also, the Kansas Water Authority ranked "Water Supply and Demand" as one of highest priority categories in their 1985 Research Needs Report and improving the completeness and reliability of

Mr. Alden K. Shields  
November 12, 1985  
Page 3

water use data would provide much needed water supply and demand data. The resources requested by the Kansas Department of Health and Environment are essential to the implementation of the Kansas Water Database. The Kansas Department of Health and Environment is planning for a substantial amount of on-line development for FY 1987 and their specific plans for each of five data files is footnoted in the attached table. Some of their FY 1987 plans are also directly related to the development of a State Groundwater Information System; such as the on-line development of the Groundwater Quality File and computerization of the Underground Storage Tanks File.

DLE:bk1  
cc: Kansas Water Data Control Committee  
Don Heiman  
Attachments

**STATUS OF FILES FOR KANSAS WATER DATA BASE**

<b>Agency</b>	<b>File Name</b>	<b>Type of File</b>	<b>Storage Medium</b>	<b>Location of File</b>	<b>Database Used</b>	<b>Plans to Automate</b>
Kansas Geological Survey	1. Bedrock Depth	Computer	Disk pack	KGS DATA GENERAL	ACCESS	N/A
	2. Water Level Information	Computer	Disk pack	KGS DATA GENERAL	ACCESS	N/A
	3. Brine Water Chemistry <sup>a/</sup>	Partial computer	Tape, Paper	KGS DATA GENERAL	None	N/A
	4. Groundwater Quality Data <sup>a/</sup>	Partial computer	Disk pack, Tape, Paper	KGS DATA GENERAL	None	N/A
Division of Water Resources	1. Surface and Groundwater (Water Use)	Computer	Disk pack	DISC	TOTAL	N/A
	2. Surface and Groundwater (Appropriations)	Computer	Disk pack	DISC	TOTAL	N/A
	3. Surface and Groundwater <sup>b/</sup> (Temp. Approp.)	Manual	Paper	DWR	None	FY 1987
	4. Dam Inventory <sup>b/</sup>	Manual	Paper	DWR	None	FY 1987
Kansas Water Office	1. Water Information Catalogue	Computer	Tape	DISC	None	N/A
Kansas Corporation Commission	1. Oil/Gas Intents-to-Drill	Computer	Disk pack	KGS DATA GENERAL	None	Convert to DISC
	2. Oil/Gas Completion Reports	Computer	Disk pack	KGS DATA GENERAL	None	Convert to DISC
	3. Oil/Gas Plugging Records	Computer	Disk pack	KGS DATA GENERAL	None	Convert to DISC
	4. Oil/Gas Operators Licensing Records	Computer	On-line disk	DISC	ADABAS	N/A
	5. Fresh and Usable Water Base <sup>c/</sup>	---	---	---	---	---

Agency	File Name	Type of File	Storage Medium	Location of File	Database Used	Plans to Automate
Department of Health and Environment	1. Salt Water Ponds	Computer	On-line disk	DISC	TOTAL	N/A
	2. Salt Water Injection Wells	Computer	On-line disk	DISC	TOTAL	N/A
	3. Water Well Records	Computer	On-line disk	DISC	TOTAL	N/A
	4. Groundwater Quality <sup>d/</sup>	Computer	Tape	DISC	None	FY 1987
	5. Liquified Petroleum Storage Wells	Manual	Paper	KDHE	None	FY 1987
	6. Salt Solution Mining Wells	Manual	Paper	KDHE	None	FY 1987
	7. Hazardous Waste Inventory	Computer	On-line disk	EPA	?	N/A
	8. Waste Water Source Inventory	Computer	On-line disk	EPA	?	N/A
	9. Effluent Quality Data Set	Computer	On-line disk	EPA	?	N/A
	10. Drinking Water Supply Inventory	Computer	On-line disk	EPA	?	N/A
	11. Drinking Water Quality Data Set <sup>d/</sup>	Computer	Tape	DISC	None	FY 1987
	12. Surface Water Quality <sup>d/</sup>	Computer	Tape	DISC	None	FY 1987
	13. Biological Data	Computer	Tape	EPA	None	N/A
	14. Station Master File <sup>f/</sup>	Computer	On-line disk	DISC	TOTAL	N/A
	15. Underground Storage Tanks <sup>e/, f/</sup>	Manual	Paper	KDHE	None	FY 1987

a/ These files will be placed on the computer at DISC.

b/ These files are scheduled for on-line development at DISC, using the TOTAL database in FY 1987; provided that a new programming position is approved in the FY 1987 budget.

c/ Development of this file would require a special data collection effort and the FY 1987 budget did not contain sufficient resources to do it.

d/ Relevant portions of these files are scheduled for on-line development at DISC, using the TOTAL database, in FY 1987; provided that the FY 1987 budget request for 1.5 programming positions for the Kansas Water Database is approved.

e/ This manual files will be computerized in FY 1987, subject to the budgetary approval listed in footnote d.

f/ These were files not listed in the schematic diagram (p. 35) of "The Proposed Kansas Water Data Base."

STATE OF KANSAS



John Carlin, Governor

KANSAS WATER OFFICE  
Joseph F. Harkins  
Director

Suite 200  
109 SW Ninth  
Topeka, Kansas 66612-1215  
913-296-3185

**M E M O R A N D U M**

Date: December 27, 1985  
To: *Darrel* Kansas Water Data Control Committee  
From: Darrel L. Eklund, Chairman  
Kansas Water Data Control Committee  
Subject: Agenda for January 16, 1986 Committee Meeting

Our December, 1985 committee meeting was postponed due to bad weather. It has been rescheduled to begin at 10:00 a.m. on Thursday, January 16. It will be held at the U.S. Geological Survey in Lawrence, in the Library, and will feature a presentation by the U.S. Geological Survey. Attached is a tentative copy of the agenda.

Mike Dealy has requested that the Water Data Control Committee review the attached letter, dated January 30, 1985, at our upcoming meeting. I have discussed this letter with Dale Johnson and he indicates that the Division of Information Systems and Communications would need to know what specific computer files, programs, etc. may be accessed by the Equus Beds Groundwater Management District No. 2. I imagine that the Division of Information Systems and Communications would also want to know the level of authorization; for example, is it by inquiry only.

I'm hoping for better weather and looking forward to seeing you on January 16.

DLE:jjc  
Attachment  
cc: Don Heiman

**KANSAS WATER DATA CONTROL COMMITTEE AGENDA**

January 16, 1986

- A. Minutes for October 28, 1985 Meeting
- B. Access Authorization for Groundwater Management District No. 2
- C. Old Business
- D. New Business
- E. U.S. Geological Survey Presentation



GORDON SCHMIDT PRESIDENT  
GARY BASE WIDE PRESIDENT  
F. E. WITHROW JR. SECRETARY  
EUGENE GOERING TREASURER  
ADRIAN & EPP ATTORNEYS  
MICHAEL T. DEALY MANAGER

MEMBERS  
RAY BONTRAG  
DON GERARD  
MEL TARUM  
RALPH WARD  
EUGENE WOLF

## **EQUUS BEDS GROUNDWATER MANAGEMENT DISTRICT NO. 2**

243 MAIN • HALSTEAD, KANSAS 67056 • (316) 835-2224

January 30, 1985

Dwight Brinkley, Chairman  
Kansas Water Data Committee  
Kansas Department of Health & Environment  
Building 740 - Forbes Field  
Topeka, Kansas 66620

Re: Kansas Water Data Committee - OS

Dear Dwight:

The District is working with DISC to establish dial-up capabilities to assess the Kansas Water Data Base (KWDB). Before the District can access the data-base, DISC must have an access authorization from each agency having a data-base in the KWDB. The District therefore, requests access authorization from each member agency of the Kansas Water Data Committee (KWDC). The District is making the request to the Committee instead of individual agencies. It is felt the Committee would serve as a clearing house for such requests.

Authorization should be sent to the District and a copy to:

Mr. Dale Johnson, Assistant Director  
Technical Support Section  
1152-W, State Office Building  
Topeka, Kansas 66612-1503

Should you or the Committee have any questions or wish to discuss the request, please contact me.

Sincerely,  
EQUUS BEDS GROUNDWATER  
MANAGEMENT DISTRICT NO. 2

Michael T. Dealy  
Manager

MTD/dh

cc: Dale Johnson, DISC