

MINUTES OF THE SENATE COMMITTEE ON WAYS AND MEANS

The meeting was called to order by Senator August "Gus" Bogina at  
Chairperson

11:00 a.m./p.m./on March 14, 1985 in room 123-S of the Capitol.

All members were present except:

Committee staff present:

Research Department: Ed Ahrens, Mary Galligan, Robin Hunn  
Revisor's Office: Norman Furse  
Committee Office: Judy Bromich, Doris Fager

Conferees appearing before the committee:

INTRODUCTION OF BILLS

The Chairman explained that he had been requested to ask the committee to introduce the following measures:

1. A bill to exempt political subdivisions of the state from payment of LP-Gas Tax. (SB 294 included this provision, but was inadvertently stricken from the calendar)
2. A bill to allow legislators to continue KPERS contributions under specific conditions after leaving legislative service.
3. A bill concerning minority and women small businesses.

Motion was made by Senator Feleciano and seconded by Senator Gannon to introduce the three bills. The motion carried by voice vote.

SB 166 - Appropriations FY 1986, Regents Institutions  
SB 161 - Appropriations FY 1985, Regents Institutions

SB 161, Section 3 - Kansas State University

Senator Harder presented the subcommittee report for FY 1985. There were no questions.

SB 166, Section 3 - Kansas State University

Following the presentation of the subcommittee report on this section by Senator Harder, there were questions concerning Recommendation No. 2. In answer to questions from several committee members, Senator Harder stated that this is not the only university having the dropout problem. He assured the committee that the presidents of other universities are in agreement that this should be a pilot program at Kansas State University. He felt this should be a line item in the budget. Both he and Senator Feleciano admitted there are other problems causing students to drop out of school, but that faculty advisors may be able to help them continue their education.

There were questions concerning other recommendations. These were answered to the satisfaction of those asking the questions.

At this point, Senator Feleciano indicated that the University had requested \$43,500 and 1.5 F.T.E. to support ongoing research at the horticulture research center in Sedgwick County. He said the community is in the process of raising \$40,000 for capital improvements at the center; they have raised \$23,000 and will have the balance in about 30 days. He said the Governor did not recommend this expenditure, nor is it in the subcommittee report.

Motion was made by Senator Feleciano and seconded by Senator Harder to amend the subcommittee report to include \$43,500 and 1.5 positions for the horticulture research center at Wichita. The motion carried by voice vote.

CONTINUATION SHEET

MINUTES OF THE SENATE COMMITTEE ON WAYS AND MEANS,

room 123-S, Statehouse, at 11:00 a.m./p.m./ on March 14, 1985

SB 166, Section 3 - Continued

Senator Werts noted that the university requested and the Regents approved an expenditure for \$54,000 and one F.T.E. for Hazardous and Solid Waste Research. He reminded the committee that two bills are being passed relating to hazardous waste, and he feels it is appropriate that the state give industry some help in developing technology concerning the problem. Following a short discussion, a motion was made by Senator Werts and seconded by Senator Doyen to approve an expenditure of \$54,000 and one F.T.E. for Hazardous and Solid Waste Research at Kansas State University. The motion carried by voice vote.

Senator Doyen distributed Attachment A, concerning proposed administrative structure for the International Livestock Program at Kansas State University. Senator Gannon said that if this were to be operated like the International Grains Program, he is supportive of the idea.

In answer to questions from committee members, Senator Doyen said he did not have time to go before the subcommittee, because he received the information too late. He further noted that this has not been presented to the Board of Regents, because it was not prepared in time for their budget work.

Motion was made by Senator Doyen and seconded by Senator Werts to provide a total amount of \$128,000 for the International Livestock Program at Kansas State University, to make this amount a separate line item, and not to include it in the budget base. The motion carried by voice vote.

SB 166, Section 4 - Veterinary Medical Center--Kansas State University

Senator Harder explained the subcommittee report for this section. Following his presentation, there was discussion regarding a pending agreement with the State of Nebraska concerning the Veterinary Medical Center. It was indicated that the two states are close to an agreement. It was apparent that, if an agreement is reached, Kansas State University will emerge as a regional veterinary medical center and will be among the top two or three in the country.

Motion was made by Senator Harder and seconded by Senator Werts to adopt the subcommittee reports for Kansas State University and Veterinary Medical Center. The motion carried by voice vote.

SB 166, Section 2 - Fort Hays State University

The subcommittee report was presented by Senator Winter. There were general questions from committee members concerning the report, but no changes were made.

SB 166, Section 6 - Pittsburg State University

Senator Winter explained the subcommittee report on this section. He called the committee's attention to Recommendation No. 4, regarding deletion of funds for academic service centers at community colleges. There was an extended discussion regarding this item, with reasons being given for and against the centers.

Motion was made by Senator Talkington and seconded by Senator Doyen to re-insert the funds for the academic service centers, and to make this funding a line item in the appropriations bill.

There was discussion concerning the fact that there are other parts of the state needing similar programs, and Senator Gannon indicated he wondered where the funding would end. Other members of the committee stressed that these centers would be helpful to people in areas where there is no university; and they felt there is need for such programs.

Senator Winter noted he felt the academic service centers might impact the F.T.E. formula for universities in future years.

CONTINUATION SHEET

MINUTES OF THE SENATE COMMITTEE ON WAYS AND MEANS,  
room 123-S, Statehouse, at 11:00 a.m./p.m. on March 14, 1985

SB 166, Section 6 - Pittsburg State University - Continued

The motion to re-insert the funds for academic service centers on community college campuses carried by voice vote.

Motion was made by Senator Winter and seconded by Senator Talkington to adopt the subcommittee reports for Fort Hays State University and Pittsburg State University as amended. The motion carried by voice vote.

SB 166, Section 7 - University of Kansas

The subcommittee report on this section was presented by Senator Doyen. In connection with Recommendation No. 7, Senator Johnston indicated that Parsons State Hospital has a good research program for retarded children. He said the proposed funding would provide a moderate base of S.G.F. support for the \$800,000 to \$900,000 of federal grants.

Senator Doyen added that the subcommittee thought it was a modest request, even though there had not been S.G.F. support in this area previously. Senator Johnston indicated this request did not go through the Governor's office.

It was called to the subcommittee's attention that the funds noted in recommendation No. 2 were taken care of in decisions made on systemwide issues. Because of this, motion was made by Senator Winter and seconded by Senator Johnston to delete recommendation No. 2 on page 3 from the subcommittee report. The motion carried by voice vote.

Senator Gannon questioned Recommendation No. 3 and the deletion of funds for the Center of Excellence in Education Research. Senator Doyen said this was not one of the university's higher priorities, and the subcommittee decided to delete it and perhaps look at it another year. He added that he personally thinks this should be part of the Department of Education.

Senator Gannon said he has heard discussion that it might be better to contract for services such as that given by Centers of Excellence with larger universities outside the State of Kansas.

Motion was made by Senator Doyen and seconded by Senator Johnston to adopt the subcommittee report for the University of Kansas as amended. The motion carried by voice vote.

Senator Feleciano presented a request from Wichita State University for funding for an applied engineering center for the enhancement of life opportunities for severely handicapped persons. This is in connection with Center Industries in Wichita, which helps to make handicapped people productive citizens. The request is for a total of \$150,000. However, motion was made by Senator Feleciano and seconded by Senator Doyen to provide \$70,089 from state general funds. The rest will come from Cerebral Palsy funding. The motion carried by voice vote.

Staff explained that a separate bill is being introduced in the House of Representatives which includes parts of SB 101. Motion was made by Senator Talkington and seconded by Senator Doyen to direct staff to make the necessary amendments in SB 101. The motion carried by voice vote.

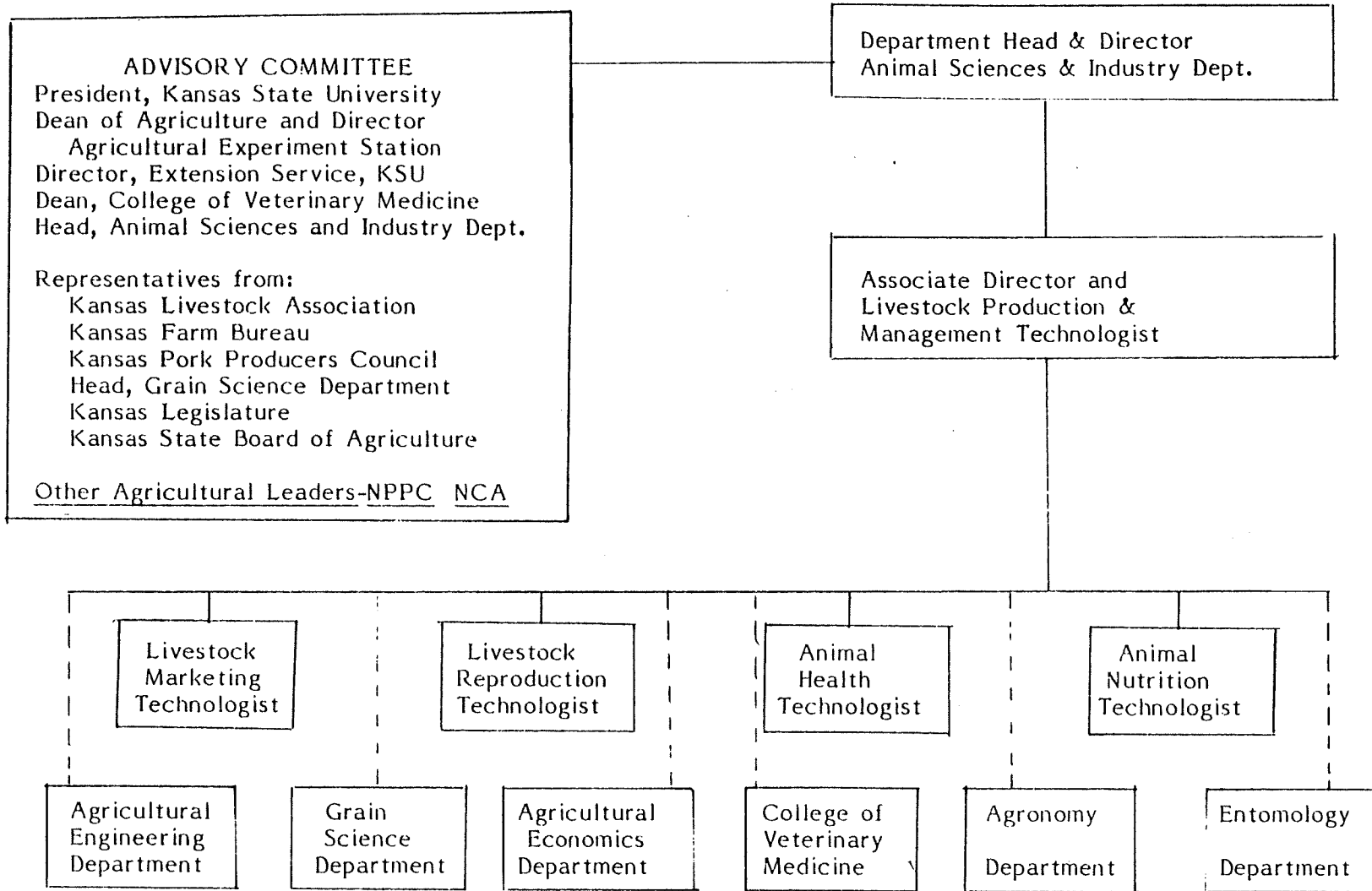
SB 101, SB 161, SB 166

Motion was made by Senator Feleciano and seconded by Senator Doyen to report SB 101 as amended, SB 161 as amended and SB 166 as amended favorably for passage. The motion carried by roll call vote.

The meeting was adjourned by the Chairman.



PROPOSED ADMINISTRATIVE STRUCTURE FOR THE INTERNATIONAL LIVESTOCK PROGRAM OF THE ANIMAL SCIENCES AND INDUSTRY DEPARTMENT



A 3-14

INTERNATIONAL LIVESTOCK PROGRAM OF THE DEPARTMENT OF ANIMAL SCIENCES & INDUSTRY

Leading Group: Animal Sciences and Industry Department

Cooperating with: Grain Science and Industry, Agronomy, Agricultural Economics, Agricultural Engineering, Entomology and Veterinary Medicine

Other Agencies with Mutual Interest: Kansas Pork Producers, Kansas Livestock Association, Kansas Farm Bureau, Kansas State Board of Agriculture, International Grains Program, American Soybean Association  
U.S. Feed Grains Council

Projected Annual Budget:  
(Includes Fringe)

Associate Director and Livestock Production and Management Technologist	\$48,000
Animal Reproduction Specialist	35,800
Animal Nutrition Specialist	35,800
Animal Health Specialist	35,800
Livestock Marketing Specialist	35,800
Secretary	18,000
Translation	10,000
Office Supplies, Training Aids, & Equipment	5,000
Travel	15,000
Consultants (To assist short courses and provide specialized training.)	<u>8,000</u>
	\$247,200

Objective:

To establish an International Livestock Program whose primary purpose will be to aid producers of Kansas livestock, livestock products, and commodities utilized by livestock, in the marketing of their products. This program provide research and technical assistance in production and marketing to foreign buyers. This program does not exist in Kansas, or in other states, and should provide Kansas producers a competitive international marketing edge.

Specific Objectives:

1.) Support the marketing and export of live animals, semen and embryos by providing a contact organization for international customers wishing to import these from the U.S. The program would work with potential customers of Kansas producers and aid both the buyer and seller in meeting the rules and regulations involved in live animal, semen, or embryo export, and would provide technical assistance to the purchasing party to insure successful importation.

2.) Provide technical assistance to interested countries, on a consulting basis, to aid in the improvement of livestock production, management, marketing, and utilization of livestock products and products used for livestock production. Technical assistance would be available in the areas of:

- 1) Animal nutrition - range and forages, grain and crop residues.
- 2) Animal health
- 3) Animal breeding and genetics
- 4) Reproductive efficiency

- 5) Animal production and materials handling facilities
  - 6) Animal food processing, preservation and marketing
- 3.) Provide short courses and seminars on modern livestock production, management, marketing and product utilization to sponsored participants from countries wishing to purchase products or technology relating to livestock production, and natural resources utilized by livestock. These courses and/or seminars would be planned to meet the needs of the participants and can be offered in English and foreign languages through translation.

Background and Current Situation:

Kansas has 18 million acres of range land, is the leading state in winter wheat production, is currently second in the production of finished beef cattle, ninth in swine numbers, and is fast becoming the most modern and largest meat processing center in the world. Kansas State University has an outstanding Animal Sciences and Industry Department and a new Veterinary Medicine facility which is one of the finest in the U.S. Kansas has the only Grain Science and Industry Department in the U.S., and has exceptional departments of Agricultural Engineering, Entomology, Agronomy. The Kansas Artificial Breeding Service Unit, an auxiliary to the department of Animal Science and Industry, provides excellent semen ~~and~~ technology. State of the art of embryo transfer cryopreservation, and micromanipulation technology is on line at K.S.U. and research in these areas is rapidly progressing. Animal Science and Veterinary Medicine are engaged in cooperative research in those and other areas. The Grain Science Department has the International Grain program which attracts clientele from all over the world and



assists Kansas grain producers in the marketing of their commodities as well as Kansas State University in the transfer of technological information.

A program complementary to the International Grain program is needed to aid livestock producers in the marketing of livestock and livestock products.

Impact:

This program would provide a focal point for the State of Kansas to attract potential customers who wish to purchase livestock and animal products. It would enhance the competitive position of Kansas livestock producers in the marketplace. This program would provide the mechanism to aid Kansas State University in the transfer of technical information on livestock production research, health and disease control, and general livestock management to international clientele

*Koss:  
This is what  
I think John Leslie  
and Jack Janas  
have in mind.  
3*

AN APPLIED ENGINEERING CENTER  
FOR THE ENHANCEMENT OF  
LIFE OPPORTUNITIES  
FOR SEVERELY HANDICAPPED PERSONS

A  
WHITE PAPER

Submitted by  
WICHITA STATE UNIVERSITY, COLLEGE OF ENGINEERING  
In Cooperation With  
THE CEREBRAL PALSY RESEARCH FOUNDATION OF KANSAS

March 1985

B 3-14

## PROJECT SUMMARY

It is estimated that from 1973 to 1988, the federal government will have spent more than \$7.6 million in the State of Kansas funding the Rehabilitation Engineering Center (REC), a cooperative endeavor between the Cerebral Palsy Research Foundation of Kansas (CPR) and the College of Engineering-Wichita State University (WSU). This is a significant amount of money. It has been utilized to prove the validity of the concept that engineering can be a force in enhancing the human productivity of severely handicapped persons both on the job and at home. It is assumed that the federal support will remain constant through the remainder of the decade.

However, over the past several years, the federal government through the National Institute of Handicapped Research has restricted the utilization of its funds to those projects only devoted to theoretical research. Elements of service delivery related to providing jobs for handicapped people, allowing them to live independently, enhancing their performance in the classroom can no longer be funded by this source. Service delivery programs which have been proven to be economically effective such as Center Industries Corporation and the Timbers are no longer directly supported by the engineering staff of the REC. Not only does this preclude support of the entities indicated above but it also limits the assistance of the REC to other agencies throughout the State of Kansas. It is an unfortunate situation but nevertheless true.

This proposal is being written to enhance the productivity of the handicapped citizens of the State of Kansas. It is a significant moral and economic issue. At the present time, the State of Kansas spends approximately \$130 million on special education programs. Utilizing national statistics, one can quite validly take the position that only 21% of these monies are ever returned to the state through full employment of the handicapped individuals involved. Forty percent is returned in a much smaller proportion and 26% have no return at all and, in fact, the person requires subsidy through social welfare programs. Therefore,

productivity in a very real economic sense is not a reasonable expectation at the present time for those handicapped students engaged in special education programs. The economics related to gainful employment are even more meaningful. Persons employed at Center Industries Corporation receive full Blue Cross/Blue Shield benefits thus precluding the need for Medicare payments. They pay taxes on both a state and national level and are contributors rather than users of United Way monies. CPR and its partner the College of Engineering-WSU has proven that the concept works. Now they are requesting state funds to augment the federal program in order to provide pragmatic, applied research and the subsequent delivery of services throughout the State of Kansas for the severely handicapped persons who so desperately need it.

#### THE PROPOSAL

It is proposed that the College of Engineering-WSU and CPR conduct applied rehabilitation engineering research in the three following areas: 1) special education, 2) high technology, and 3) independent living. The results of the effort will be utilized to enhance the productivity of disabled Kansas residents, both children and adults alike. The Center will be staffed with WSU engineering personnel as well as personnel of CPR. It is anticipated that the Center will initially be funded at a minimal level requested the first year or \$150,000. The attached budget summary describes the allocation to general line item categories. Results of the Center's activities will be published in an annual report and distributed statewide to appropriate departments in SRS as well as the State Board of Regents, and interested groups in the State Legislature. The Kansas story will be told to a nationwide audience for possible emulation by other states throughout the nation.

#### SUMMARY

Rehabilitation engineering is a concept whose time has come. However, most, if not all, of the major federal funding agencies only support theoretical research not necessarily related to specific outcomes. In the opinion of WSU/CPR, applied research

represents the only alternative for severely handicapped people to achieve a realistic level of human productivity both in the independent living and vocational realms. It is a unique opportunity for the State of Kansas to affiliate with a research effort which is recognized nationwide and worldwide as "state of the art".

NOTE: This is an abbreviated proposal. An extensive document explaining operational and budget information in more detail is available upon request.

BUDGET SUMMARY

Wichita State University  
College of Engineering

Personnel Cost (Faculty/Staff)	\$ 55,249
Fringe Benefits	8,840
Student Cost (Research Assistant)	6,000
TOTAL WSU PORTION	<u>\$ 70,089</u>

Cerebral Palsy Research  
Foundation of Kansas, Inc.

Personnel Cost	40,772
Fringe Benefits	6,524
Operating Expense*	16,306
Indirect Cost	16,309
TOTAL CPR PORTION	<u>\$ 79,911</u>
TOTAL REQUESTED	\$150,000

\*Includes approximately \$10,000 for  
robotics supplies.