

ROADS AND HIGHWAYS COMMITTEE MEETING - January 26, 1972

The Roads and Highways Committee met in room 510 S at 2:45 P. M. on January 26, 1972. Chairman Dierdorff called the meeting to order and all members were present Allison, Jacobs and Ossmann.

Conferees on House Bill 1708 and 1127 were: Mike O'Mally and Ronald E. Lambkin of General Binding Corporation; Mr. Dick Pratt, Vice President for Retailing, Downtown Topeka, Inc.; Elton Lobban and Harold Turntine of the Motor Vehicle Department; Claud McCammet, Safety Director of State Highway Department; Lee E. Circle, Executive Secretary-Treasurer of Kansas Food Dealers Association, Inc.; Jim Foster, Wichita Chamber of Commerce; Merritt Buffon of Legislative Research.

A roster of others who registered their presence is attached.

House Bill No. 1127 - AN ACT relating to the uniform motor vehicle operators' and chauffeurs' license act; requiring a colored photograph on licenses issued; amending KSA 8-243, and repealing the existing section.

Mr. O'Mally and Mr. Lambkin gave a demonstration in which they showed the entire process of putting a colored photo on a license. A brochure giving full details and the estimated cost is attached.

Mr. Pratt urged the committee to give consideration to this bill as he feels it would be an excellent means of identification. Downtown Topeka, Inc. supports this legislation.

Mr. Turntine presented the attached fiscal report, Exhibit II. Mr. Turntine explained that his estimates came from another company.

The members were concerned that if the photo processing portion of the license was done by someone other than the Motor Vehicle Department that there might be an additional delay.

Except as otherwise noted, the individual remarks recorded herein have not been transcribed verbatim and this report has not been approved by the committee or by the individuals making such remarks

Mr. Turntine reported that the company who gave the estimates guaranteed the photo in three days. The Motor Vehicle Department does have central issuance and would not issue a license without checking the central file.

Mr. McCammet pointed out that all merchants are interested in this. In the liquor control act it is difficult to check at the present time with just a driver's license.

Mr. Circle endorsed the idea of a colored photo. He would like to see Kansas up-date their license. The people in those states who have it like it. Colored photos are getting to be more prevalent on a driver's license.

Jim Foster endorsed the idea. He pointed out to the committee that the estimated cost of \$0.23795 is amortized over eight years with the equipment. If the state owned the equipment it would be only 13¢ per card.

Mr. Buffon told the committee that he received information last summer to the effect that there are 20 states and Puerto Rico that use a photograph. Washington said the 50¢ which was intended to pay the expense was not adequate.

The members of the committee expressed that they would not want to see us lose HB 1708 by amending it to include the colored photo, and that the fiscal reports left doubt as to what the additional cost would actually be.

Mr. Davis made a motion, second by Mr. Hayes, that House Bill 1708 be passed as amended. Motion carried. Mr. Rosenau asked to be recorded as voting NO.

The chairman asked what the pleasure of the committee is regarding House Bill 1127.

Mr. Davis suggested that it stay in committee a while longer.

Mr. Ratner suggested that if we are going to adopt it that now is the time when we are already going to raise the fees for the driver re-examination.

The chairman announced that on Thursday, January 26, 1972, copies of the legislation on railroad crossings as proposed by Mr. Schulteis would be available for the committee to study.

The meeting was adjourned.

Fran Stafford, Recording Secretary

APPROVED:


ARDEN DIERDORFF, CHAIRMAN
January 26, 1972

Except as otherwise noted, the individual remarks recorded herein have not been transcribed verbatim and this record has not been approved by the committee or by the individuals making such remarks

ROADS AND HIGHWAYS COMMITTEE

GUESTS

NAME	ADDRESS	FIRM OR CORPORATION REPRESENTED
GUD GRANT	TOPEKA	K A C T
JAMES FOSTER	WICHITA	O f C
Bill Geissler	Topeka	Martin Tractor Co. and Kansas Highway Users Conference Down town Inc
J R Pratt	Topeka	
ELTON HABBOW	TOPEKA,	MOTOR VEHICLE DEPT
HANC 1813 TOWNLINE	TOPEKA,	MOTOR VEHICLE DEPT.
Ray H. Hensley	Topeka	Kansan Motor Vehicle Kansas Citizens Safety Council
Walter R. McCombs	Topeka	Highway Dept. Eastman Topeka, Inc.
J. J. Thomas	Topeka	
W. H. Alton	✓	Mountain Topeka Inc.



PHOTO IDENTIFICATION SYSTEM

fast, simple, compact, economical... black and white or color photo ID cards in only minutes.



Three simple steps to finished black and white or color photo ID cards.

SIMPLICITY is the key to this unique photo ID system offered by GBC . . . simplicity in design and operation. In this one compact system GBC packs all the photo ID capability found in other systems offered at twice the price or more. The system features . . .

FINELY ENGINEERED COMPONENTS that yield completely finished photo ID cards using a simple three step process. (1) The GBC Photo ID Camera, mounted on a camera stand, instantly produces beautifully clear, sharp color or black and white photos. (2) From the camera the photos are cut on the precision, heavy-duty GBC Photo Die Cutter. (3) Next, laminate the photo on the card with GBC's unique Mini-Lam. From picture snapping to finished card, the process takes only minutes.

The GBC Photo ID System can provide more than a photo ID card; it can provide . . .

COMPATIBILITY with all major data collection systems . . . IBM, Friden, NCR, many more. AND PORTABILITY; each component is so compact and lightweight that the entire system can be contained in a carrying case offered as an optional extra. Now, a complete system can be moved easily from one department to another and can be stored neatly and compactly.

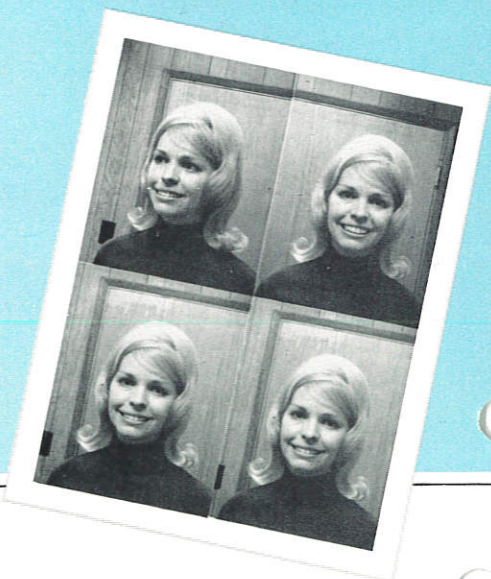
The GBC Photo ID System was designed with economy in mind with no loss in production capabilities—low equipment investment—low per card cost—250 tamper resistant finished cards per hour!



1.

GBC Photo ID Camera Produces Instant Finished Photos.

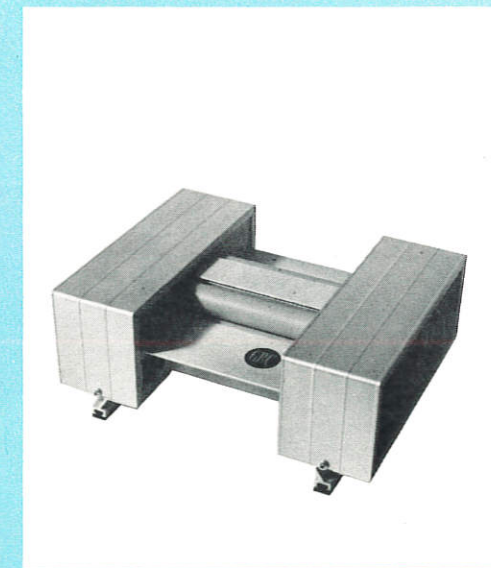
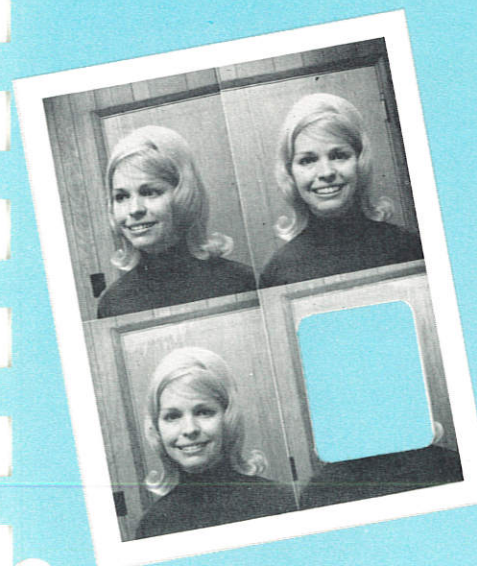
The camera produces four individual pictures on one single sheet of film (black and white or color). Ease of operation is this camera's forte. Just set the camera for black and white or color, load the film pack, aim and press the shutter. Take four pictures and pull the film sheet out of the camera. Black and white photos develop in 10 seconds, color in 60. It's that simple!



2.

GBC Photo Die Cutter—A Precision Cutting Instrument.

Trims photos and rounds corners in one single operation. Anyone can operate—heavy duty, precision engineered—portable. Cuts photos to the standard size 1" x 1-1/4" with a 1/16" corner radius.



3.

Mini-Lam Provides Lasting ID Card Protection.

The GBC Mini-Lam seals any ID card with a protective coating of high quality plastic film. Cards laminated by the Mini-Lam are impervious to soil, grease, water, even most acids. They are not susceptible to weathering, cracking, chipping or discoloring. Even the appearance of the printed card is improved by the sparkling clear plastic.





"A complete ID system in a bag"

With the carrying case (optional), you have a complete system in a "bag". The GBC vinyl carrying case not only provides the perfect solution for transporting of the system, but also provides a handy storage unit when the system is not in use. The case is ruggedly constructed and is fitted so that each system component fits perfectly in place.

SPECIFICATIONS

PHOTO ID CAMERA/MODEL NO. 1096LA

OPTICAL SYSTEM: Lens—135mm, F4.5. Fixed focus, adjustable diaphragm. 52 inches focus distance from lens to subject. Turret mounted beam-splitter deflects identical image on each of the four frames.

SHUTTER: Single speed, electro-magnetic.

AIMING LIGHT: For correct camera positioning.

ELECTRONIC FLASH: Modular construction with plug-in connection.

RECYCLING TIME: 10 to 15 seconds, color corrected light output.

ELECTRONIC CONTROL CIRCUIT: Prevents double exposure between each of the four frames as well as each individual sheet of film.

HEIGHT: 10½". Width: 8". Length: 8".

WEIGHT: 12½ lbs.

POWER: 117 VAC, .5 amp., 60 Htz.

CAMERA STAND/MODEL NO. 1099LA

HEIGHT: 6¼". Width: 7". Length: 10".

WEIGHT: 7¾ lbs.

ADJUSTABLE: Tilt up or down.

CORK-PADDED TOP: Protects camera base.

FOAM-PADDED BASE: Protects table top.

PHOTO DIE CUTTER/MODEL NO. 1069LA

CONSTRUCTION: Die and punch—oil hardened high carbon steel. Casting—heavy-duty aluminum.

BASE: 7" x 9". Height: 5". Handle length: 7"

WEIGHT: 10 lbs.

MINI-LAM/MODEL NO. 252LM

CONSTRUCTION: All aluminum, with silicone rollers.

POWER: 110/115 VAC, 60 Htz.

HEIGHT: 4¼". Width: 8¼". Length: 10¼". Weight: 6½ lbs.

FILM: Heavy gauge plastic.

Laminating pouches are conveniently packaged 100 to a box, each containing 4 aluminum carriers. Many sizes available.

CARRYING CASE/MODEL NO. 1098LA

INSIDE DIMENSIONS: 19½" x 13" x 10".

WEIGHT: 8½ lbs.



General Binding Corporation

NORTHBROOK, ILLINOIS 60062

ID CARD LAMINATOR

*totally seals ID cards
in tough plastic film
for maximum security*



*simple, fool-proof, low cost
operation on your own premises
produces up to 1400 cards per hour*

PUT ALL YOUR ID CARDS AND BADGES UNDER A TIGHT SECURITY WRAP

The new standard for speed and efficiency

You can laminate up to 1400 cards per hour.

You have a choice of three speeds for laminating with a wide range of film gauges for a diversity of uses . . . from simple signature ID cards to complete photo-EDP ID systems.

You get solid state digital control—guaranteed accurate, fool-proof, instantaneous performance. Simply click the dial into position, and the proper speed is precisely set.

You'll find the built-in puller/cooler conditions the laminated cards quickly for subsequent processing. It prepares the cards for immediate trimming or die cutting and embossing and EDP coding.

Whatever your ID system requirements, the GBC ID CARD LAMINATOR produces cards and badges that are virtually tamper proof. They won't peel, chip, crack or discolor under the most frequent and heavy use.

NEW GBC ID CARD LAMINATOR

GBC introduces the new standard in tough, tamper resistant plastic film lamination.

The new standard for ease of operation and maintenance

Anyone in your organization can operate this desk top ID CARD LAMINATOR. No special training is necessary. Simple pushbutton controls regulate every step of production and quality: one button turns the machine on to preheat; a ready light indicates the correct operating temperature has been reached; a second button starts the motor driven rollers.

Special coating keeps rollers clean, reduces maintenance to a minimum.

Portable, compact and sturdy, the GBC ID CARD LAMINATOR is designed to withstand constant, heavy use.

The new standard for economy

Only one operator is needed to conduct the complete laminating operation. With GBC's high quality, low cost laminating film, laminated cards are yours for just pennies per card.

Complete internal control. No costly delays . . . cards can be issued immediately.

It's no longer a luxury to establish an ID system. With the new GBC ID CARD LAMINATOR, you can have a quick, efficient and flexible internal security system for your organization—simply and economically.

Specifications:

SHEET SIZES: Up to 4" wide and any length.
PAPER WEIGHT: Light paper to Card Stock
OPERATING SPEED: 2, 4 and 6 feet per minute
MACHINE SIZE: Length 24",
Width 11½", Height 13"
MACHINE WEIGHT: 32 lbs.
SHIPPING WEIGHT: 39 lbs
ELECTRICAL: 700W., 115V, 50-60 Hertz A.C.



Printed in U.S.A.

General Binding Corporation

NORTHBROOK, ILLINOIS 60062

Cost Analysis to provide photo identification systems
and cards for Kansas State Driver's Licenses

Assumptions:

1. Provide 125 complete Photo I.D. systems,
2. Produce 400,000 cards per year on location,
3. Use Polaroid Type 10⁸ color film,
4. Kansas State Printer to provide printed cards,
size - 2 1/16" x 3" to fit standard data
card laminate of 2.328" x 3.25".

Initial Expense

	<u>each</u>	<u>125 systems</u>
GBC # 1096LA Automatic Camera	\$593.75	\$74,218.75
GBC # 1099LA Camera Stand	28.50	3,562.50
GBC # 1069LA Photo Die Cutter	137.75	17,218.75
GBC # 1070LA Card Die Cutter	339.00	42,375.00
GBC # 220LA Laminator	565.25	70,656.25
Total Equipment Cost	\$1664.25	\$208,031.25

Supplies Expense

	<u>per card</u>	<u>annual</u>	<u>four years</u>
Laminating Film, .005" (Rolls 4" x 200")	\$0.01625	\$6,500	\$26,000.00
Printed Cards	0.00062	248	992.00
Polaroid Film	<u>0.11531</u>	<u>46,124</u>	<u>184,496.00</u>
Total Supplies	\$0.13218	\$52,872	\$211,488.00

Per Card Cost

Supplies only	\$ 0.13218
Equipment amortization over eight years	<u>0.10577</u>
Total per card	<u><u>\$ 0.23795</u></u>

General Binding Corporation will supply the equipment systems and laminating film at standard General Services Administration Contract prices as listed above. Printed cards and Polaroid film to be supplied by others; prices listed for these two items are estimates.

General Binding Sales Corp.

Ronald E. Lambkin
Ronald E. Lambkin,
Sales Representative.

1/24/72

1-20-72
Exhibit II

HBT

TO: Elton D. Lobban, Superintendent
FROM: Harold B. Turntine, Administrator of Business Management
DATE: January 21, 1972
SUBJECT: Estimated Cost for Implementing Photographs on a Drivers License System

The following personnel, equipment, furniture, and contractual services will be required for implementing this program, provided the program for examination on renewal is implemented.

PERSONNEL

There will be an additional work load involved in operating the cameras and collecting, recording, and remitting moneys.

25 Examiner Aids	\$111,600.00
12% F.I.C.A. and Other Benefits	13,392.00
TOTAL	<u>\$124,992.00</u>

FURNITURE AND EQUIPMENT

15 Desks @ \$155.00	\$ 2,325.00
15 Steno Posture Chairs @ \$55.00	825.00
TOTAL	<u>\$ 3,150.00</u>

OTHER

Contractual service: Vendor will furnish all equipment, maintenance on equipment, and personnel except personnel to operate cameras at examining stations. They will furnish a plastic embossed photo license for 50¢ each.

400,000 issued annually	\$200,000.00
Additional postage, forms, and supplies	12,000.00
TOTAL	<u>\$212,000.00</u>

<u>GRAND TOTAL</u>	<u>\$340,142.00</u>
--------------------	---------------------