

M I N U T E S

Joint Committee on Legislative Services and Facilities

October 26, 1971

The Joint Committee on Legislative Services and Facilities met on October 26, 1971 in Room 535 of the Statehouse pursuant to the call of Chairman Carl Ossmann.

Room 529

The committee discussed possible rearrangements of Room 519 which would provide a more suitable atmosphere for large committee hearings. The arrangement decided upon utilizes existing furniture with slight modification. The arrangement will incorporate a squared "U" design at the south end on a raised platform. There is room for a seventeen-member committee. By adding two tables inside the "U" a committee of twenty-five can be accommodated. The secretary was directed to work out the necessary modifications with the architect.

The secretary was authorized to purchase 100 stack chairs with "gang-lock" device for seating of spectators.

The secretary was also authorized to purchase appropriate sound equipment.

Cassette Tape Recorders

The secretary was authorized to purchase a total of three (3) cassette tape recorders.

Page Supervisor

The committee studied four designs submitted by the State Architect for arrangement of space assigned to the House Page Supervisor at the September meeting. Design B (attached) was selected as most appropriate.

Committee Rooms

The possibility of using Room 521 as a committee room and moving the present occupants (Senator Thomas and Representative White) to other space was discussed. It was noted that Rooms 523 and 533 are two of the less desirable committee rooms which could be utilized quite efficiently as office space. The secretary is to confer with Senator Smith and Speaker Strowig on this.

Legislative Services and Facilities

The Legislative Coordinating Council at its meeting on October 26 authorized the Joint Committee on Legislative Services and Facilities to use the adjacent room (512-S) recently vacated by the janitorial staff. The Joint Committee on Legislative Services and Facilities was to make the determination whether to cut a door through to the existing office or to add a partition outside to take in some of the entry space. Partitioning of the entry space was selected as the best alternative and Chairman Ossmann discussed with Mr. Dressler, who currently holds a contract with the state, the design of the partition. Mr. Dressler stated that the work could be accomplished by December 15, 1971 if work could begin immediately. The secretary was directed to contact the State Architect regarding financing and starting the project.

There being no further business, the meeting adjourned.

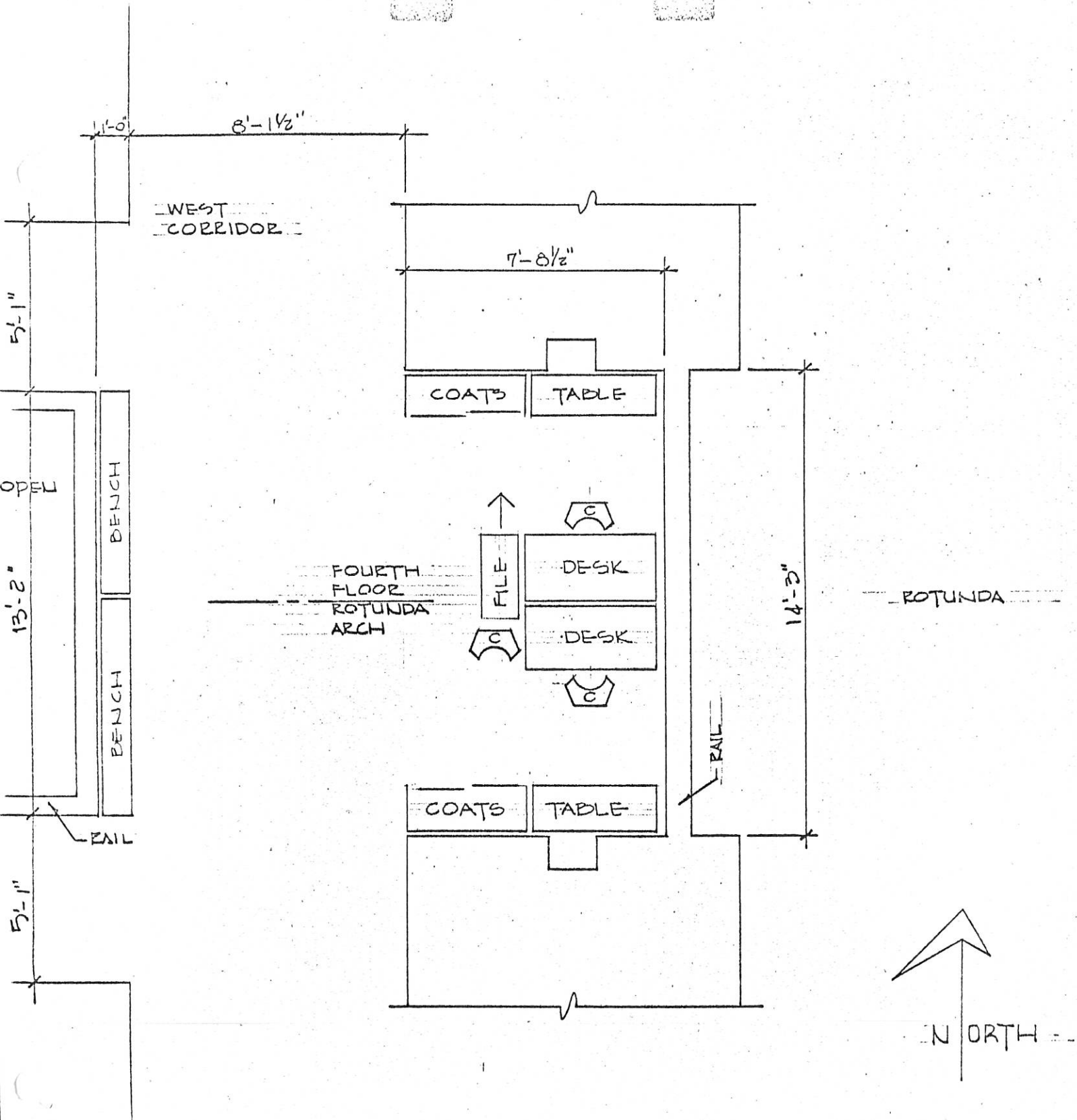
Respectfully submitted,

MINUTES APPROVED:



Representative Carl Ossmann
Chairman

Except as otherwise noted, the individual remarks recorded herein have not been transcribed verbatim and this record has not been approved by the committee or by the individuals making such remarks.



PAGE SUPERVISORS — DESIGN



SCALE = 1/4" = 1'-0"